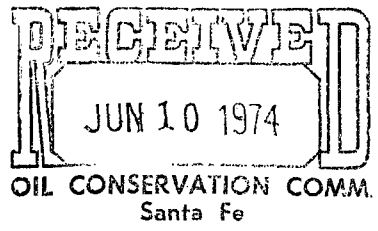


NSP- 956

**EXXON** COMPANY, U.S.A.  
POST OFFICE BOX 1600 • MIDLAND, TEXAS 79701

June 6, 1974 *R-1670 N*

PRODUCTION DEPARTMENT  
MIDCONTINENT DIVISION  
R. W. BOWDON  
OPERATIONS MANAGER



File No. 22-3 *Due June 30 State Land*

Request for Acreage Reallocation and Non-Standard Gas Proration Units New Mexico "S" State Well Nos. 12, 14 and 21  
Blinebry Oil and Gas Pool  
Lea County, New Mexico

*160 acres as follows*

*SW NW, N SW, SE SW  
4 4, 2 4 4 4*  
*dedicated to well # 21*

New Mexico Oil Conservation Commission  
P. O. Box 2088  
Santa Fe, New Mexico 87501

Attention: Mr. A. L. Porter, Jr., Secretary Director

Gentlemen:

Exxon Corporation respectfully requests administrative approval of non-standard gas proration units and acreage reallocation for our New Mexico "S" State Well Nos. 12, 14 and 21.

Rule 5 (A) of the Blinebry Oil and Gas Pool requires each gas well to be located on a standard proration unit consisting of approximately 160 acres which shall comprise a governmental quarter section.

In support of this application, we have attached the following:

- Form C-102 Plat - New Mexico "S" State No. 12
- Form C-102 Plat - New Mexico "S" State No. 14
- Form C-102 Plat - New Mexico "S" State No. 21
- - Area Plat showing offset operators

Copies of this application are being furnished by certified mail to offset operators this date.

Yours very truly,

*R W Bowdon*

DLC:mej  
Attachments  
cc: NMOCC, Hobbs, New Mexico (2)  
cc: El Paso Natural Gas Company (Gas Purchaser)  
600 Bank of the Southwest  
Midland, Texas 79701

OFFSET OPERATORS

Atlantic Richfield Company  
Box 1610  
Midland, Texas 79701

Cities Service Oil Company  
Box 4906  
Midland, Texas 79701

Gulf Oil Company - U.S.  
Box 1150  
Midland, Texas 79701

Marathon Oil Company  
Box 552  
Midland, Texas 79701

Sohio Petroleum Company  
Box 3167  
Midland, Texas 79701

Sun Oil Company  
Box 1861  
Midland, Texas 79701

EXXON LESG. No. 37721

NEW MEXICO OIL CONSERVATION COMMISSION

Form C-102  
Supersedes C-128  
Effective 1-1-65

State Les. No. B-934

WELL LOCATION AND ACREAGE DEDICATION PLAT

Federal Les. No. \_\_\_\_\_

All distances must be from the outer boundaries of the Section.

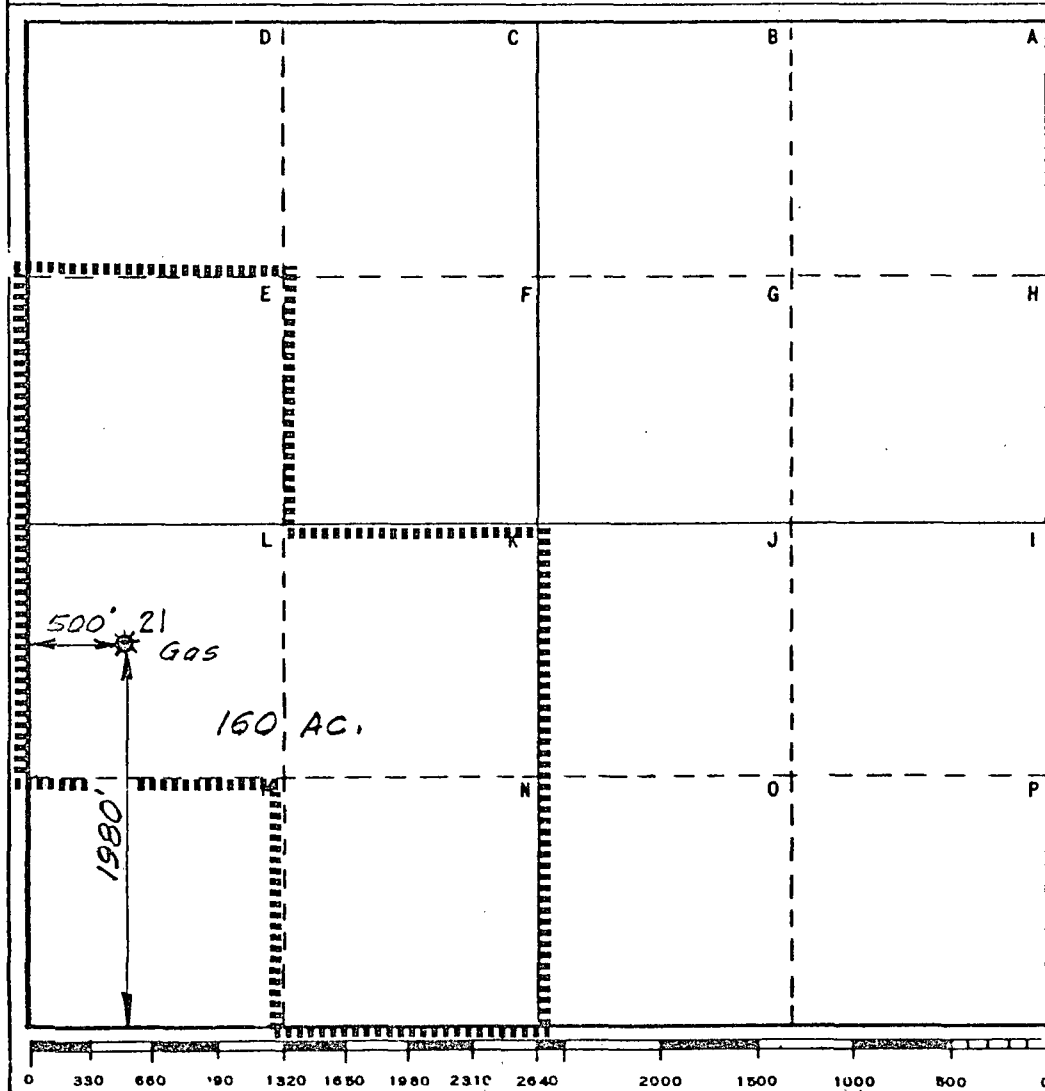
Operator Exxon Corporation		Lease New Mexico "S" State			Well No. 21
Unit Letter "L"	Section 2	Township 22-S	Range 37-E	County Lea	
Actual Footage Location of Well: 500 feet from the West line and 1,980 feet from the South line					
Ground Level Elev. 3,368'	Producing Formation Clearfork	Pool Blinebry (Gas)			Dedicated Acreage: 160 Acres

1. Outline the acreage dedicated to the subject well by colored pencil or hachure marks on the plat below.
2. If more than one lease is dedicated to the well, outline each and identify the ownership thereof (both as to working interest and royalty).
3. If more than one lease of different ownership is dedicated to the well, have the interests of all owners been consolidated by communitization, unitization, force-pooling, etc?

Yes  No If answer is "yes," type of consolidation \_\_\_\_\_

If answer is "no," list the owners and tract descriptions which have actually been consolidated. (Use reverse side of this form if necessary.) \_\_\_\_\_

No allowable will be assigned to the well until all interests have been consolidated (by communitization, unitization, forced-pooling, or otherwise) or until a non-standard unit, eliminating such interests, has been approved by the Commission.



CERTIFICATION

I hereby certify that the information contained herein is true and complete to the best of my knowledge and belief.

Name *D. L. Clemmer*

Position *Proration Specialist*

Company Exxon Corporation  
Box 1600 Midland, Texas

Date June 6, 1974

I hereby certify that the well location shown on this plat was plotted from field notes of actual surveys made by me or under my supervision, and that the same is true and correct to the best of my knowledge and belief.

Date Surveyed *6/6/74*

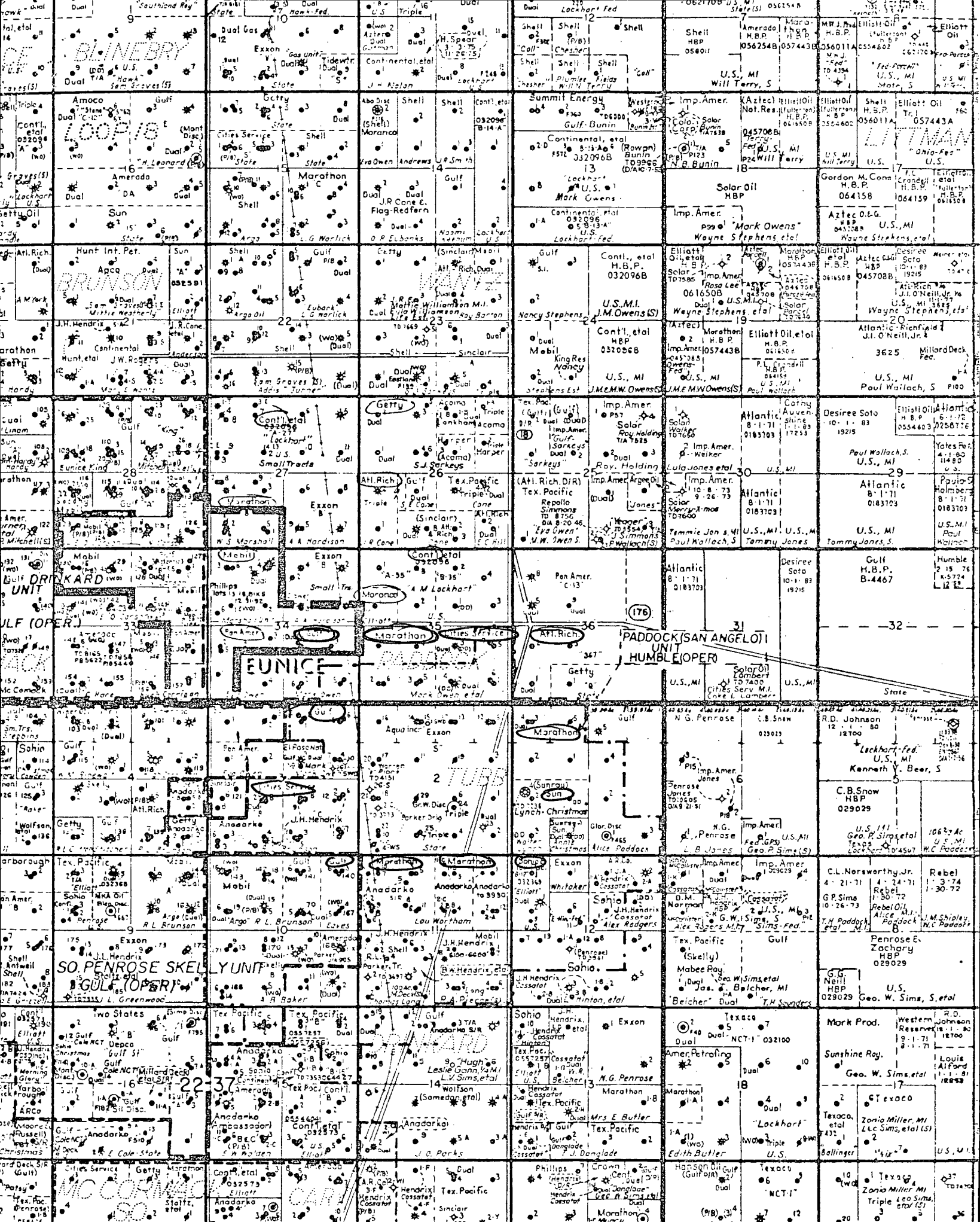
Registered Professional Engineer and/or Land Surveyor

*H. S. Hester, Jr.*

Certificate No. *1382*

6 Miles S of Eunice, New Mexico

C.E. Sec. File No. A-6834 C



BLINNEY

LOOP 18

BRUNSON

DRINKARD

GULF (OPER.)

SO. PENROSE SKELLY UNIT

MCCORMACK

Exxon

Shell

Marathon

Shell

Continental

Exxon

Phillips

EUNICE

Marathon

Marathon

Marathon

Marathon

Marathon

Continental

Shell

Shell

Shell

Shell

Continental

Continental

Continental

Continental

Continental

Continental

Continental

Continental

Shell

Summit Energy

Continental

Continental

Continental

Continental

Continental

Continental

Continental

Continental

Continental

Continental

Continental

Shell

Summit Energy

Continental

Continental

Continental

Continental

Continental

Continental

Continental

Continental

Continental

Continental

Continental

Shell

Summit Energy

Continental

Continental

Continental

Continental

Continental

Continental

Continental

Continental

Continental

Continental

Continental

Shell

Summit Energy

Continental

Continental

Continental

Continental

Continental

Continental

Continental

Continental

Continental

Continental

Continental

OIL CONSERVATION COMMISSION  
Hobbs DISTRICT

OIL CONSERVATION COMMISSION  
BOX 2088  
SANTA FE, NEW MEXICO

DATE June 18, 1974

RE: Proposed MC \_\_\_\_\_  
Proposed DHC \_\_\_\_\_  
Proposed NSL \_\_\_\_\_  
Proposed SWD \_\_\_\_\_  
Proposed WFX \_\_\_\_\_  
Proposed PMX \_\_\_\_\_  
NSP  X

Gentlemen:

I have examined the application dated \_\_\_\_\_  
for the Exxon Corp. New Mexico S State #21-L 2-22-37  
Operator Lease and Well No. Unit, S-T-R

and my recommendations are as follows:

O.K.---May need hearing for reallocation of acreage.-----J.D.R.  
\_\_\_\_\_  
\_\_\_\_\_  
\_\_\_\_\_  
\_\_\_\_\_  
\_\_\_\_\_

Yours very truly,

RECEIVED  
JUN 20 1974  
OIL CONSERVATION COMM.  
Santa Fe

OIL CONSERVATION COMMISSION  
Hobbs DISTRICT

OIL CONSERVATION COMMISSION  
BOX 2088  
SANTA FE, NEW MEXICO

DATE June 18, 1974

RE: Proposed MC \_\_\_\_\_  
Proposed DHC \_\_\_\_\_  
Proposed NSL \_\_\_\_\_  
Proposed SWD \_\_\_\_\_  
Proposed WFX \_\_\_\_\_  
Proposed PMX \_\_\_\_\_  
NSP X

Gentlemen:

I have examined the application dated \_\_\_\_\_  
for the Exxon Corp. New Mexico S State #14-C 2-22-37  
Operator Lease and Well No. Unit, S-T-R

and my recommendations are as follows:

O.K.--May need hearing for reallocation of acreage.----J.D.R.  
\_\_\_\_\_  
\_\_\_\_\_  
\_\_\_\_\_  
\_\_\_\_\_

Yours very truly,

*J. D. R.*

RECEIVED  
JUN 20 1974  
OIL CONSERVATION COM. Santa Fe



STATE OF NEW MEXICO  
ENERGY, MINERALS AND NATURAL RESOURCES DEPARTMENT  
OIL CONSERVATION DIVISION

BRUCE KING  
GOVERNOR

POST OFFICE BOX 2088  
STATE LAND OFFICE BUILDING  
SANTA FE, NEW MEXICO 87504  
(505) 827-5800

January 22, 1991

Exxon Company, USA  
P.O. Box 1600  
Midland, TX 79702-1600

Attention: Alex M. Correa, Administrative Specialist

Administrative Order NSP-1616

Dear Mr. Correa:

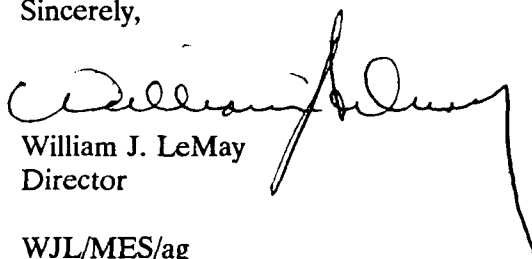
Reference is made to your application dated December 17, 1990 for a 40-acre non-standard gas proration unit consisting of the following acreage in the Blinebry Oil and gas Pool:

LEA COUNTY, NEW MEXICO  
TOWNSHIP 22 SOUTH, RANGE 37 EAST, NMPM  
Section 2: NW/4 ~~NW/4~~  
S

It is my understanding that this unit is to be dedicated to your existing New Mexico "S" State Well No. 21 located at a standard gas well location 1980 feet from the South line and 500 feet from the West line (Unit L) of said Section 2.

By authority granted me under the provisions of Rule 2(a)4 and 4(b) of the Special Rules and Regulations for the Blinebry Oil and Gas Pool, as promulgated by Division Order No. R-8170, as amended, the above non-standard gas proration unit is hereby approved.

Sincerely,



William J. LeMay  
Director

WJL/MES/ag

cc: Oil Conservation Division - Hobbs  
NM State Land Office - Santa Fe  
File: NSP-956

*Administrative Order NSP-1616*  
*Exxon Corporation*  
*January 22, 1991*  
*Page 2*

**REMARKS:** Division Administrative Order NSP-956, dated July 1, 1974, which authorized a non-standard 160-acre gas spacing and proration unit for this well comprising the SW/4 NW/4, N/2 SW/4 and SE/4 SW/4 of said Section 2 is hereby rescinded.