

OIL CONSERVATION COMM.

Santa Fe

Getty Oil Company

MID-CONTINENT EXPLORATION AND PRODUCTION DIVISION
~~NEW MEXICO EXPLORATION AND PRODUCTION DIVISION~~

P.O. Box 249
Hobbs, New Mexico 88240

November 25, 1975

New Mexico Oil Conservation Commission
P.O. Box 2088
Santa Fe, New Mexico 87501

Attn: Mr. Joe Ramey

NSP-1009

104 D II
Blue dec 26

Re: Application for a Non-Standard
Gas Proration Unit in the Jalmat
Gas Pool for Getty Oil Company's
E. F. KING WELL NO. 3, Located:
Unit K, Sec. 1, T-23-S, R-36-E,
LEA COUNTY, NEW MEXICO

Gentlemen:

Getty Oil Company requests approval of an 160 acre non-standard Jalmat Gas Pool Proration Unit, comprising of the SW/4 of Section 1, T-23-S, R-36-E, Lea County to be dedicated to its Well No. 1 (already producing) and Well #3 (to be completed).

In support of this Application the following items are submitted:

1. Currently, this unit is dedicated to the E. F. King Well No. 1.
2. Well No. 1 is not capable of making unit allowable.
3. Well No. 3 will be completed in the Jalmat Gas Zone to supplement production from Well No. 1 in order to produce top allowable from the Unit.
4. Attached is a plat showing the 160 acre unit in "Red". Well No. 1 is 990' East and North of the Southwest corner. Well No. 3 is 1980' East and North of the Southwest corner. Therefore, there are 1400' between the wells.
5. Copies of this Application have been furnished to offset operators.

Respectfully yours,
GETTY OIL COMPANY

C. L. Wade
C. L. Wade
Area Superintendent

WLG-EJM/bh
ATTACHMENTS

E. F. KING WELL NO. 3
OFFSET OPERATORS

Continental Oil Company
P.O. Box 460
Hobbs, New Mexico 88240

El Paso Natural Gas Company
P.O. Box 1492
El Paso, Texas 79978

Texas Pacific Oil Company
P.O. Box 4067
Midland, Texas 79701

Gulf Oil Company
P. O. Box 670
Hobbs, New Mexico 88240

Skelly Oil Company
P.O. Box 1351
Midland, Texas 79701

**NEW MEXICO OIL CONSERVATION COMMISSION
WELL LOCATION AND ACREAGE DEDICATION PLAT**

Form C-102
Supersedes C-128
Effective 1-1-65

All distances must be from the outer boundaries of the Section.

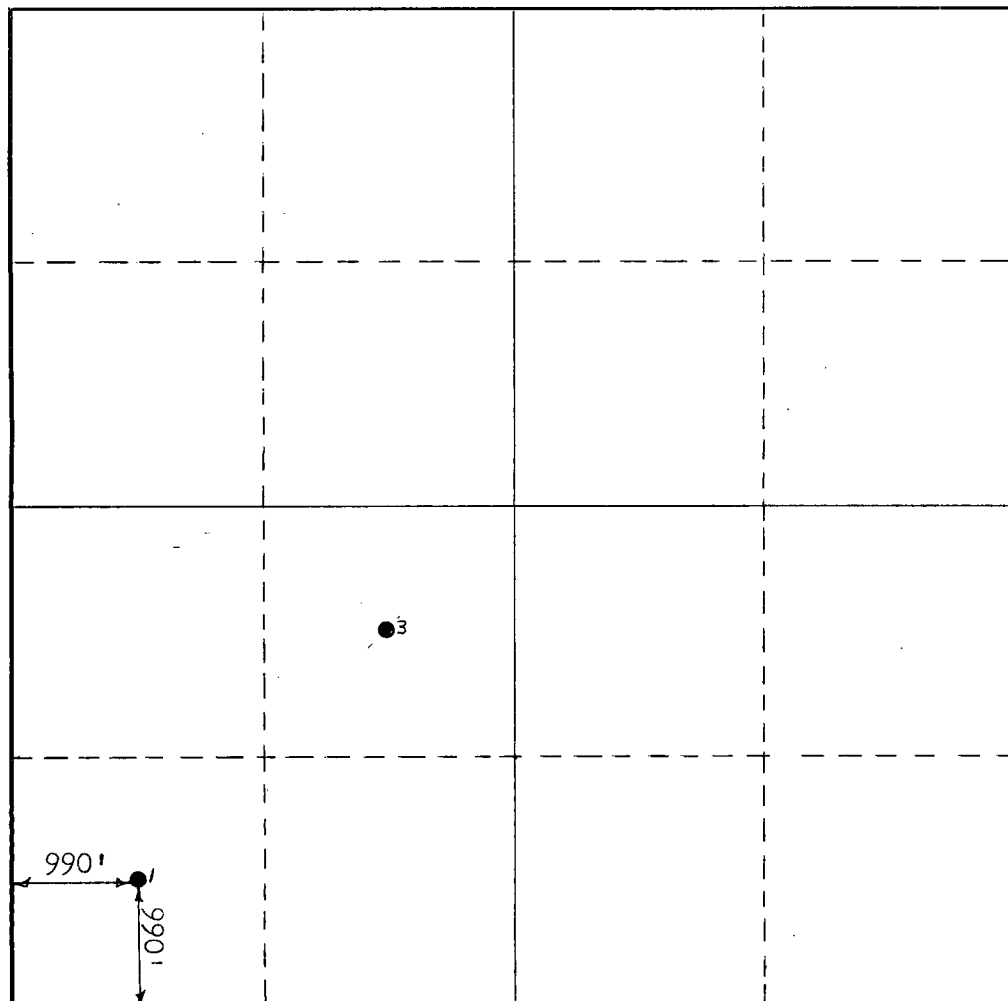
Operator Getty Oil Company			Lease E. F. King		Well No. 1
Unit Letter M	Section 1	Township 23S	Range 36E	County Lea	
Actual Footage Location of Well: <div style="display: flex; justify-content: space-between; align-items: center;"> 990 feet from the South line and 990 feet from the West line </div>					
Ground Level Elev.	Producing Formation		Pool Jalmat		Dedicated Acreage: 160 Acres

1. Outline the acreage dedicated to the subject well by colored pencil or hachure marks on the plat below.
2. If more than one lease is dedicated to the well, outline each and identify the ownership thereof (both as to working interest and royalty).
3. If more than one lease of different ownership is dedicated to the well, have the interests of all owners been consolidated by communitization, unitization, force-pooling, etc?

☐ Yes ☐ No If answer is "yes," type of consolidation _____

If answer is "no," list the owners and tract descriptions which have actually been consolidated. (Use reverse side of this form if necessary.) _____

No allowable will be assigned to the well until all interests have been consolidated (by communitization, unitization, forced-pooling, or otherwise) or until a non-standard unit, eliminating such interests, has been approved by the Commission.



CERTIFICATION

I hereby certify that the information contained herein is true and complete to the best of my knowledge and belief.

Name
C. L. Wade *C. L. Wade*

Position
Area Superintendent

Company
Getty Oil Company

Date
November 25, 1975

I hereby certify that the well location shown on this plat was plotted from field notes of actual surveys made by me or under my supervision, and that the same is true and correct to the best of my knowledge and belief.

Date Surveyed

Registered Professional Engineer and/or Land Surveyor

Certificate No.



NEW MEXICO OIL CONSERVATION COMMISSION
WELL LOCATION AND ACREAGE DEDICATION PLAT

Form C-102
Supersedes C-128
Effective 1-1-65

All distances must be from the outer boundaries of the Section.

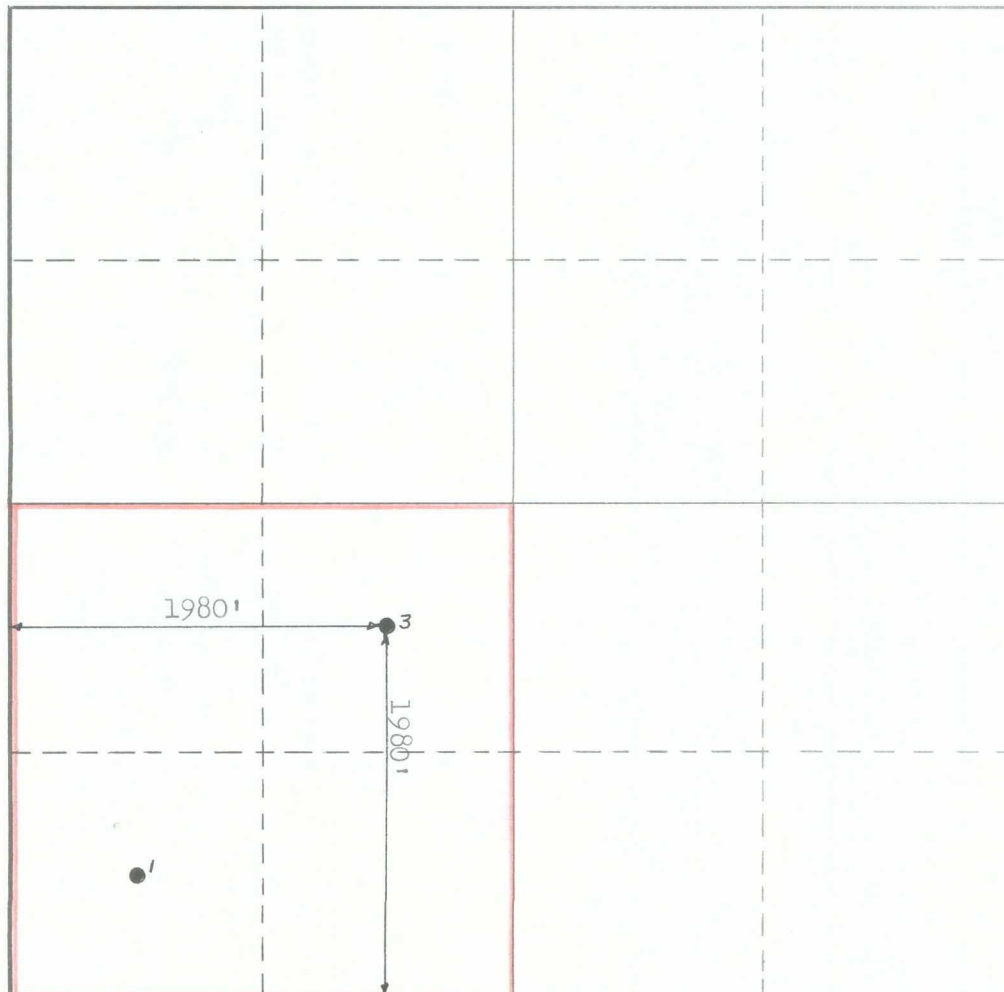
Operator Getty Oil Company			Lease E.F. King		Well No. 3
Unit Letter K	Section 1	Township 23S	Range 36E	County Lea	
Actual Footage Location of Well: 1980 feet from the South line and 1980 feet from the West line					
Ground Level Elev. 3414'	Producing Formation		Pool Jalmat	Dedicated Acreage: 160 Acres	

1. Outline the acreage dedicated to the subject well by colored pencil or hachure marks on the plat below.
2. If more than one lease is dedicated to the well, outline each and identify the ownership thereof (both as to working interest and royalty).
3. If more than one lease of different ownership is dedicated to the well, have the interests of all owners been consolidated by communitization, unitization, force-pooling, etc?

☐ Yes ☐ No If answer is "yes," type of consolidation _____

If answer is "no," list the owners and tract descriptions which have actually been consolidated. (Use reverse side of this form if necessary.) _____

No allowable will be assigned to the well until all interests have been consolidated (by communitization, unitization, forced-pooling, or otherwise) or until a non-standard unit, eliminating such interests, has been approved by the Commission.



CERTIFICATION

I hereby certify that the information contained herein is true and complete to the best of my knowledge and belief.

Name
C. L. Wade *C.L. Wade*
Position
Area Superintendent
Company
Getty Oil Company
Date
Nov. 25, 1975

I hereby certify that the well location shown on this plat was plotted from field notes of actual surveys made by me or under my supervision, and that the same is true and correct to the best of my knowledge and belief.

Date Surveyed

Registered Professional Engineer
and/or Land Surveyor

Certificate No.

DATE: _____

New Mexico Oil Conservation Commission
P. O. Box 2088
Santa Fe, New Mexico 87501

Re: Application for a Non-Standard
Gas Proration Unit in the Jalmat
Gas Pool for Getty Oil Company's
E. F. KING WELL NO. 3, Located:
Unit K, Sec. 1, T-23-S, R-36-E,
LEA COUNTY, NEW MEXICO

Gentlemen:

_____ has reviewed the subject Application
of Getty Oil Company and hereby grants a waiver as an Offset Operator.

Signature

Title

Company

APPROVED _____

NOT APPROVED _____

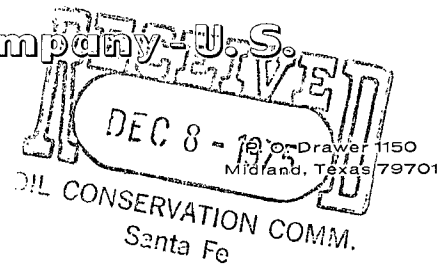
WLG/bh

Gulf Energy and Minerals Company-U.S.

PRODUCTION DEPARTMENT
MIDLAND DISTRICT

B. L. Choate
DISTRICT PRODUCTION MANAGER
R. F. Ward, Jr.
DISTRICT OPERATIONS MANAGER
C. E. Fields
DISTRICT SERVICES MANAGER
A. J. Evans, Jr.
DISTRICT ENVIRONMENTAL & SAFETY MANAGER
J. C. Howard
DISTRICT EMPLOYEE RELATIONS MANAGER

December 5, 1975



Oil Conservation Commission
State of New Mexico
P. O. Box 2088
Santa Fe, New Mexico 87501

Attention: Mr. Joe D. Ramey

Re: Request for 160-Acre Non-Standard
Gas Unit, Getty Oil Company's
E. F. King Well No. 3, Jalmat
Gas Pool, Lea County, New Mexico

Gentlemen:

This is to advise that Gulf Oil Corporation has been given due notice that Getty Oil Company has made application for a 160-acre non-standard gas unit for their E. F. King Well No. 3, Jalmat Gas Pool, Lea County, New Mexico.

We hereby waive any objection to the granting of this application for the above well which is located:

1980' FSL and 1980' FWL of
Section 1, T-23-S, R-36-E,
Lea County, New Mexico

Executed this 5th day of December, 1975.

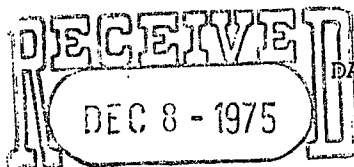
Yours very truly,

GULF OIL CORPORATION

BY W. C. Palmer
W. C. Palmer, District Engineer

CVB:ka





DATE:

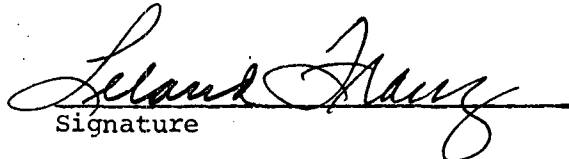
12/3/75

New Mexico Oil Conservation Commission CONSERVATION COMM.
P. O. Box 2088 Santa Fe
Santa Fe, New Mexico 87501

Re: Application for a Non-Standard
Gas Proration Unit in the Jalmat
Gas Pool for Getty Oil Company's
E. F. KING WELL NO. 3, Located:
Unit K, Sec. 1, T-23-S, R-36-E,
LEA COUNTY, NEW MEXICO

Gentlemen:

Skelly Oil Company has reviewed the subject Application
of Getty Oil Company and hereby grants a waiver as an Offset Operator.


Signature

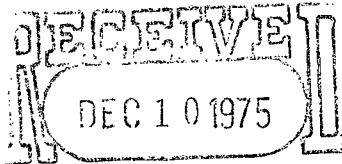
Production Manager
Title

Skelly Oil Company
Company

APPROVED X

NOT APPROVED _____

WLG/bh



DATE: December 9, 1975

NEW MEXICO OIL CONSERVATION COMM.
Santa Fe

New Mexico Oil Conservation Commission
P. O. Box 2088
Santa Fe, New Mexico 87501

Re: Application for a Non-Standard
Gas Proration Unit in the Jalmat
Gas Pool for Getty Oil Company's
E. F. KING WELL NO. 3, Located:
Unit K, Sec. 1, T-23-S, R-36-E,
LEA COUNTY, NEW MEXICO

Gentlemen:

Continental Oil Company has reviewed the subject Application
of Getty Oil Company and hereby grants a waiver as an Offset Operator.

Signature : L. P. Thompson

Division Manager

Title

Continental Oil Company

Company

APPROVED X

NOT APPROVED _____

WLG/bh

DATE: December 12, 1975

New Mexico Oil Conservation Commission
P. O. Box 2088
Santa Fe, New Mexico 87501

Re: Application for a Non-Standard
Gas Proration Unit in the Jalmat
Gas Pool for Getty Oil Company's
E. F. KING WELL NO. 3, Located:
Unit K, Sec. 1, T-23-S, R-36-E,
LEA COUNTY, NEW MEXICO

Gentlemen:

El Paso Natural Gas Company has reviewed the subject Application
of Getty Oil Company and hereby grants a waiver as an Offset Operator.

E.R. Manning
Signature

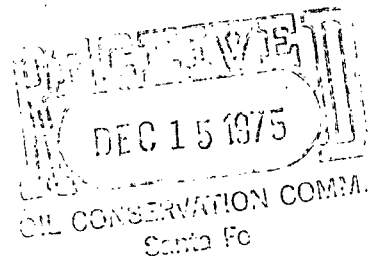
Chief Proration Engineer
Title

El Paso Natural Gas Company
Company

APPROVED X

NOT APPROVED _____

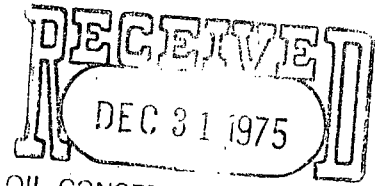
WLG/bh



NSP-1009

DATE: 12-29-75

New Mexico Oil Conservation Commission
P. O. Box 2088
Santa Fe, New Mexico 87501



OIL CONSERVATION COMM.

Re: Application for a Non-Standard
Gas Proration Unit in the Jalmat
Gas Pool for Getty Oil Company's
E. F. KING WELL NO. 3, Located:
Unit K, Sec. 1, T-23-S, R-36-E,
LEA COUNTY, NEW MEXICO

Gentlemen:

Texas Pacific Oil Company, Inc. has reviewed the subject Application
of Getty Oil Company and hereby grants a waiver as an Offset Operator.

RJ Womack rw
Signature R. J. Womack

District Manager
Title

Texas Pacific Oil Company, Inc.
Company

APPROVED ✓

NOT APPROVED _____

WLG/bh