

DATE IN 12/18/09	SUSPENSE	ENGINEER R.E.	LOGGED IN 12-18-09	TYPE PC	PTGW APP NO. 0935255153
------------------	----------	---------------	--------------------	---------	----------------------------

ABOVE THIS LINE FOR DIVISION USE ONLY

NEW MEXICO OIL CONSERVATION DIVISION
- Engineering Bureau -
1220 South St. Francis Drive, Santa Fe, NM 87505



Apache
Burrin #2, #5, #6

ADMINISTRATIVE APPLICATION CHECKLIST

THIS CHECKLIST IS MANDATORY FOR ALL ADMINISTRATIVE APPLICATIONS FOR EXCEPTIONS TO DIVISION RULES AND REGULATIONS WHICH REQUIRE PROCESSING AT THE DIVISION LEVEL IN SANTA FE

Application Acronyms:

[NSL-Non-Standard Location] [NSP-Non-Standard Proration Unit] [SD-Simultaneous Dedication]
[DHC-Downhole Commingling] [CTB-Lease Commingling] [PLC-Pool/Lease Commingling]
[PC-Pool Commingling] [OLS - Off-Lease Storage] [OLM-Off-Lease Measurement]
[WFX-Waterflood Expansion] [PMX-Pressure Maintenance Expansion]
[SWD-Salt Water Disposal] [IPI-Injection Pressure Increase]
[EOR-Qualified Enhanced Oil Recovery Certification] [PPR-Positive Production Response]

RECEIVED OGD
26 DEC 18 P 2:51

- [1] **TYPE OF APPLICATION** - Check Those Which Apply for [A]
 [A] Location - Spacing Unit - Simultaneous Dedication
☐ NSL ☐ NSP ☐ SD
 Check One Only for [B] or [C]
 [B] Commingling - Storage - Measurement
☐ DHC ☐ CTB ☐ PLC ☒ PC ☐ OLS ☐ OLM
 [C] Injection - Disposal - Pressure Increase - Enhanced Oil Recovery
☐ WFX ☐ PMX ☐ SWD ☐ IPI ☐ EOR ☐ PPR
 [D] Other: Specify _____
- [2] **NOTIFICATION REQUIRED TO:** - Check Those Which Apply, or Does Not Apply
 [A] ☐ Working, Royalty or Overriding Royalty Interest Owners
 [B] ☐ Offset Operators, Leaseholders or Surface Owner
 [C] ☐ Application is One Which Requires Published Legal Notice
 [D] ☐ Notification and/or Concurrent Approval by BLM or SLO
U.S. Bureau of Land Management - Commissioner of Public Lands, State Land Office
 [E] ☐ For all of the above, Proof of Notification or Publication is Attached, and/or,
 [F] ☐ Waivers are Attached
- [3] **SUBMIT ACCURATE AND COMPLETE INFORMATION REQUIRED TO PROCESS THE TYPE OF APPLICATION INDICATED ABOVE.**

[4] **CERTIFICATION:** I hereby certify that the information submitted with this application for administrative approval is **accurate** and **complete** to the best of my knowledge. I also understand that **no action** will be taken on this application until the required information and notifications are submitted to the Division.

Note: Statement must be completed by an individual with managerial and/or supervisory capacity.

Amber Cooke
Print or Type Name

Signature

Amber Cooke

Engineering Tech
Title

12/17/2009
Date

amber.cooke@apachecorp.com
e-mail Address



December 16, 2009

Richard Ezeanyim
New Mexico Oil Conservation Division
1220 South St. Francis Drive
Santa Fe, New Mexico 87505

Re: Administrative Approval to Surface Commingle
Bunin #2, Bunin #5, Bunin #6
Sec 13 & Sec 18, T21S, R37E & R38E
Lea County, New Mexico

Dear Mr. Ezeanyim,

Apache requests administrative approval to surface commingle two existing wells, Bunin #2 and Bunin #5, with the Bunin #6, a new drill. The Bunin #6 will be a Blinebry/Tubb/Drinkard/Abo well.

All three wells are located on the same Private Lease #306053. Since all working, revenue and royalty interest ownerships are common, interest owner notification was not required.

The following are enclosed for your review of the proposed surface commingling:

1. C-103.
2. Well information table and copies of C-102's for each well.
3. Proposed production facilities diagram.
4. Well location map.
5. Signed statement from Landman acknowledging identical interests for each zone.


If you need additional information or have any questions, please give me a call at (918) 491-4968.

Sincerely,

A handwritten signature in black ink that reads "Amber Cooke". The signature is fluid and cursive, with the first name "Amber" and last name "Cooke" clearly distinguishable.

Amber Cooke
Engineering Technician

Bunin Lease
 Blinebry Oil & Gas (Oil)
 Tubb Oil & Gas (Oil)
 Drinkard
 Wantz; Abo

<u>Well No.</u>	<u>Location</u>	<u>Pool</u>	<u>Status</u>
Bunin #2	E-18-21S-38E	Wantz; Abo (62700)	Active
Bunin #5	F-18-21S-38E	Wantz; Abo (62700)	Active
Bunin #6	A-13-21S-37E	Blinebry Oil & Gas Oil (6660) Tubb Oil & Gas Oil (60240) Drinkard (19190) Wantz; Abo (62700)	New Drill 

MEXICO OIL CONSERVATION COMMISSION WELL LOCATION AND ACREAGE DEDICATION PLAT

Form C-102
Supersedes C-128
Effective 1-1-65

All distances must be from the outer boundaries of the Section.

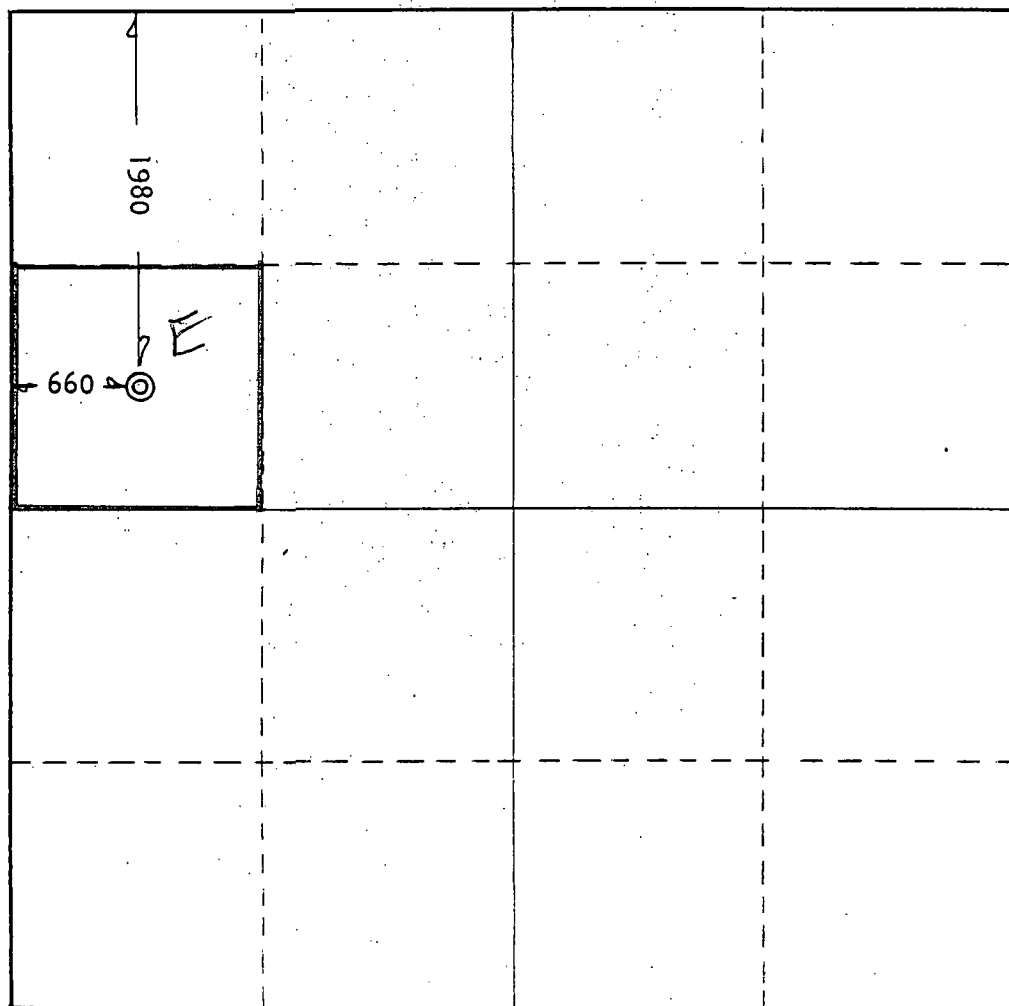
Operator SOLAR OIL COMPANY			Lease Bunin		Well No. #2
Unit Letter E	Section 18	Township T-21-S	Range R-38-E	County Lea	
Actual Footage Location of Well: 1980 feet from the North line and 660 feet from the West line					
Ground Level Elev.	Producing Formation Abo		Pool Undesignated	Dedicated Acreage: 40 Acres	

1. Outline the acreage dedicated to the subject well by colored pencil or hatchure marks on the plat below.
2. If more than one lease is dedicated to the well, outline each and identify the ownership thereof (both as to working interest and royalty).
3. If more than one lease of different ownership is dedicated to the well, have the interests of all owners been consolidated by communitization, unitization, force-pooling, etc?

☐ Yes ☐ No If answer is "yes," type of consolidation _____

If answer is "no," list the owners and tract descriptions which have actually been consolidated. (Use reverse side of this form if necessary.) _____

No allowable will be assigned to the well until all interests have been consolidated (by communitization, unitization, forced-pooling, or otherwise) or until a non-standard unit, eliminating such interests, has been approved by the Commission.



CERTIFICATION

I hereby certify that the information contained herein is true and complete to the best of my knowledge and belief.

Name *M. J. Smith*
Position

Production Clerk

Company
Solar Oil Company

Date
November 12, 1968

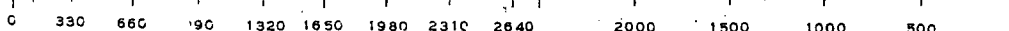
I hereby certify that the well location shown on this plat was plotted from field notes of actual surveys made by me or under my supervision, and that the same is true and correct to the best of my knowledge and belief.

Re-entry of

Date Surveyed
Rowan #1 Bunin

Registered Professional Engineer and/or Land Surveyor

Certificate No.



**MEXICO OIL CONSERVATION COMMISSION
WELL LOCATION AND ACREAGE DEDICATION PLAT**

Form C-102
Supersedes C-128
Effective 1-1-65

All distances must be from the outer boundaries of the Section.

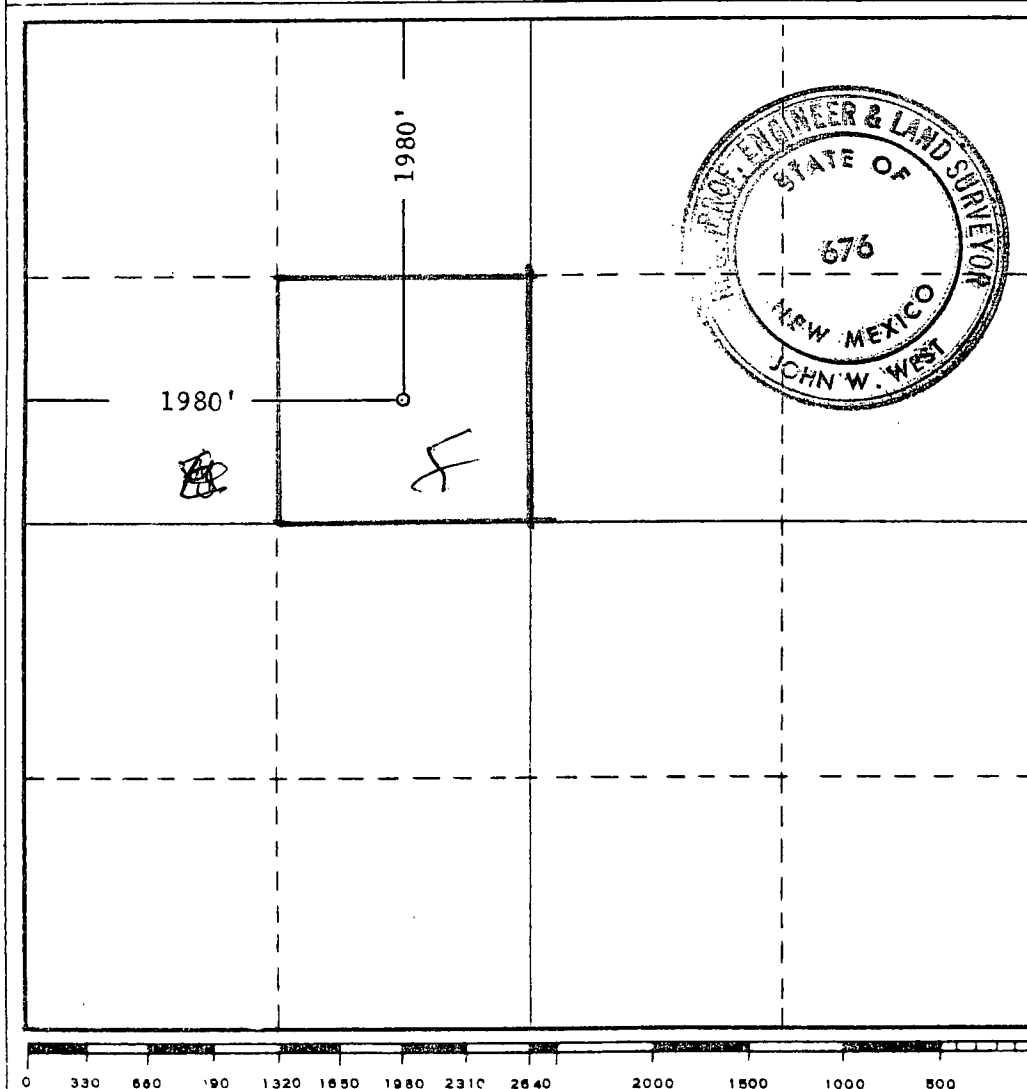
Operator SOLAR OIL COMPANY			Lease XXXXXXXX Bunin		Well No. 5
Unit Letter F	Section 18	Township 21 SOUTH	Range 38 EAST	County LEA	
Actual Footage Location of Well: 1980 feet from the NORTH line and 1980 feet from the WEST line					
Ground Level Elev. 3487.2	Producing Formation Abo		Pool Undesignated		Dedicated Acreage: 40 Acres

1. Outline the acreage dedicated to the subject well by colored pencil or hachure marks on the plat below.
2. If more than one lease is dedicated to the well, outline each and identify the ownership thereof (both as to working interest and royalty).
3. If more than one lease of different ownership is dedicated to the well, have the interests of all owners been consolidated by communitization, unitization, force-pooling, etc?

☐ Yes ☐ No If answer is "yes," type of consolidation _____

If answer is "no," list the owners and tract descriptions which have actually been consolidated. (Use reverse side of this form if necessary.) _____

No allowable will be assigned to the well until all interests have been consolidated (by communitization, unitization, forced-pooling, or otherwise) or until a non-standard unit, eliminating such interests, has been approved by the Commission.



CERTIFICATION

I hereby certify that the information contained herein is true and complete to the best of my knowledge and belief.

Name *M. J. Smith*
 Position Production Clerk
 Company Solar Oil Company
 Date January 4, 1969

I hereby certify that the well location shown on this plat was plotted from field notes of actual surveys made by me or under my supervision, and that the same is true and correct to the best of my knowledge and belief.

Date Surveyed
DEC. 7, 1968
 Registered Professional Engineer
and/or Land Surveyor

John W. West
 Certificate No. **676**

DISTRICT I
1836 N. French Dr., Hobbs, NM 88240
DISTRICT II
1301 W. Grand Avenue, Artesia, NM 88210
DISTRICT III
1000 Rio Brazos Rd., Aztec, NM 87410
DISTRICT IV
1220 S. St. Francis Dr., Santa Fe, NM 87505

RECEIVED

NOV 18 2009

HOBBSDO

State of New Mexico
Energy, Minerals and Natural Resources Department

Form C-102
Revised October 12, 2005

Submit to Appropriate District Office
State Lease - 4 Copies
Fee Lease - 3 Copies

OIL CONSERVATION DIVISION
1220 South St. Francis Dr.
Santa Fe, New Mexico 87505

WELL LOCATION AND ACREAGE DEDICATION PLAT

☐ AMENDED REPORT

API Number 30-025-39547	Pool Code 6660	Pool Name Blinebry Oil & Gas Pool
Property Code 306053	Property Name BUNIN	Well Number 6
OGRID No. 873	Operator Name APACHE CORPORATION	Elevation 3460'

Surface Location

UL or lot No. A	Section 13	Township 21 S	Range 37 E	Lot Idn	Feet from the 351	North/South line NORTH	Feet from the 980	East/West line EAST	County LEA
--------------------	---------------	------------------	---------------	---------	----------------------	---------------------------	----------------------	------------------------	---------------

Bottom Hole Location If Different From Surface

UL or lot No.	Section	Township	Range	Lot Idn	Feet from the	North/South line	Feet from the	East/West line	County
Dedicated Acres 40	Joint or Infill	Consolidation Code	Order No.						

NO ALLOWABLE WILL BE ASSIGNED TO THIS COMPLETION UNTIL ALL INTERESTS HAVE BEEN CONSOLIDATED
OR A NON-STANDARD UNIT HAS BEEN APPROVED BY THE DIVISION

<p><u>SURFACE LOCATION</u> Lat - N 32°29'07.01" Long - W 103°06'40.71" NMSPC- N 542434.466 E 918154.342 (NAD-83)</p>				<p>351' 980'</p>		<p>OPERATOR CERTIFICATION I hereby certify that the information contained herein is true and complete to the best of my knowledge and belief, and that this organization either owns a working interest or unleased mineral interest in the land including the proposed bottom hole location pursuant to a contract with an owner of such a mineral or working interest, or to a voluntary pooling agreement or a compulsory pooling order heretofore entered by the division. David Catanach 11/16/09 Signature Date David Catanach Printed Name</p>
<p>SURVEYOR CERTIFICATION I hereby certify that the well location shown on this plat was plotted from field notes of actual surveys made by me or under my supervision, and that the same is true and correct to the best of my belief.</p>				<p>DATE SURVEYED OCTOBER 12, 2009 Signature & Seal of Professional Surveyor GARY L. JONES W.O. NO. 24782</p>		<p>Certificate No. Gary L. Jones 7977 BASIN SURVEYS</p>

DISTRICT I
1626 N. French Dr., Hobbs, NM 88240

DISTRICT II
1301 W. Grand Avenue, Artesia, NM 88210

DISTRICT III
1000 Rio Brazos Rd., Aztec, NM 87410

DISTRICT IV
1220 S. St. Francis Dr., Santa Fe, NM 87505

RECEIVED

NOV 18 2009

HOBBS

State of New Mexico
Energy, Minerals and Natural Resources Department

Form C-102
Revised October 12, 2005

Submit to Appropriate District Office

State Lease - 4 Copies

Fee Lease - 3 Copies

OIL CONSERVATION DIVISION

1220 South St. Francis Dr.
Santa Fe, New Mexico 87505

WELL LOCATION AND ACREAGE DEDICATION PLAT

☐ AMENDED REPORT

API Number 30-025-39547	Pool Code 60240	Pool Name Tubb Oil & Gas Pool
Property Code 306053	Property Name BUNIN	Well Number 6
OGRID No. 873	Operator Name APACHE CORPORATION	Elevation 3460'

Surface Location

UL or lot No. A	Section 13	Township 21 S	Range 37 E	Lot Idn	Feet from the 351	North/South line NORTH	Feet from the 980	East/West line EAST	County LEA
---------------------------	----------------------	-------------------------	----------------------	---------	-----------------------------	----------------------------------	-----------------------------	-------------------------------	----------------------

Bottom Hole Location If Different From Surface

UL or lot No.	Section	Township	Range	Lot Idn	Feet from the	North/South line	Feet from the	East/West line	County
Dedicated Acres 40	Joint or Infill	Consolidation Code	Order No.						

NO ALLOWABLE WILL BE ASSIGNED TO THIS COMPLETION UNTIL ALL INTERESTS HAVE BEEN CONSOLIDATED
OR A NON-STANDARD UNIT HAS BEEN APPROVED BY THE DIVISION

	<p>OPERATOR CERTIFICATION</p> <p>I hereby certify that the information contained herein is true and complete to the best of my knowledge and belief, and that this organization either owns a working interest or unleased mineral interest in the land including the proposed bottom hole location pursuant to a contract with an owner of such a mineral or working interest, or to a voluntary pooling agreement or a compulsory pooling order heretofore entered by the division.</p> <p><i>David Catanach</i> 11/16/09 Signature Date</p> <p>David Catanach Printed Name</p>
	<p>SURVEYOR CERTIFICATION</p> <p>I hereby certify that the well location shown on this plat was plotted from field notes of actual surveys made by me or under my supervision, and that the same is true and correct to the best of my belief.</p> <p>GARY L. JONES Date Surveyed 11/16/09</p> <p>Signature & Seal of Professional Surveyor</p> <p>GARY L. JONES W.O. No. 27782</p>
	<p>Certificate No. Gary L. Jones 7977</p>
	<p>BASIN SURVEYS</p>

District I

1625 N. French Dr., Hobbs, NM 88240
 Phone:(505) 393-6161 Fax:(505) 393-0720

District II

1301 W. Grand Ave., Artesia, NM 88210
 Phone:(505) 748-1283 Fax:(505) 748-9720

District III

1600 Rio Brazos Rd., Aztec, NM 87410
 Phone:(505) 334-6175 Fax:(505) 334-6170

District IV

1220 S. St Francis Dr., Santa Fe, NM 87505
 Phone:(505) 476-3470 Fax:(505) 476-3462

State of New Mexico
Energy, Minerals and Natural Resources

Form C-102
 Permit 103971

Oil Conservation Division
1220 S. St Francis Dr.
Santa Fe, NM 87505

WELL LOCATION AND ACREAGE DEDICATION PLAT

1. API Number 30-025-39547	2. Pool Code 19190	3. Pool Name DRINKARD
4. Property Code 306053	5. Property Name BUNIN	6. Well No. 006
7. OGRID No. 873	8. Operator Name APACHE CORP	9. Elevation 3460

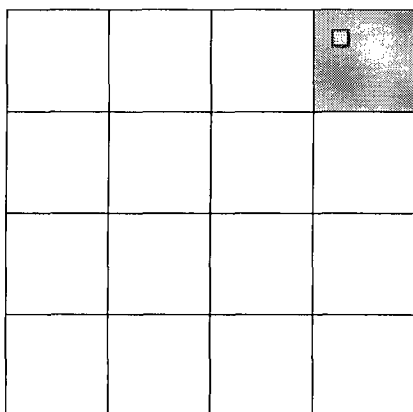
10. Surface Location

UL - Lot A	Section 13	Township 21S	Range 37E	Lot 10n	Feet From 351	N/S Line N	Feet From 980	E/W Line E	County LEA
---------------	---------------	-----------------	--------------	---------	------------------	---------------	------------------	---------------	---------------

11. Bottom Hole Location If Different From Surface

UL - Lot	Section	Township	Range	Lot 10n	Feet From	N/S Line	Feet From	E/W Line	County
12. Dedicated Acres 40.00	13. Joint or Infill	14. Consolidation Code	15. Order No.						

**NO ALLOWABLE WILL BE ASSIGNED TO THIS COMPLETION UNTIL ALL INTERESTS HAVE BEEN
 CONSOLIDATED OR A NON-STANDARD UNIT HAS BEEN APPROVED BY THE DIVISION**

**OPERATOR CERTIFICATION**

I hereby certify that the information contained herein is true and complete to the best of my knowledge and belief, and that this organization either owns a working interest or unleased mineral interest in the land including the proposed bottom hole location(s) or has a right to drill this well at this location pursuant to a contract with an owner of such a mineral or working interest, or to a voluntary pooling agreement or a compulsory pooling order heretofore entered by the division.

E-Signed By: Lana Williams
 Title: Engineering Tech
 Date: 10/15/2009

SURVEYOR CERTIFICATION

I hereby certify that the well location shown on this plat was plotted from field notes of actual surveys made by me or under my supervision, and that the same is true and correct to the best of my belief.

Surveyed By: Gary Jones
 Date of Survey: 10/2/2009
 Certificate Number: 7977

DISTRICT I
1825 N. French Dr., Hobbs, NM 88240
DISTRICT II
1501 W. Grand Avenue, Artesia, NM 88210
DISTRICT III
1000 Rio Brazos Rd., Aztec, NM 87410
DISTRICT IV
1220 S. St. Francis Dr., Santa Fe, NM 87505

RECEIVED

NOV 18 2008

HOBBSOCD

State of New Mexico
Energy, Minerals and Natural Resources Department

OIL CONSERVATION DIVISION

1220 South St. Francis Dr.
Santa Fe, New Mexico 87505

Form C-102
Revised October 12, 2005

Submit to Appropriate District Office
State Lease - 4 Copies
Fee Lease - 3 Copies

WELL LOCATION AND ACREAGE DEDICATION PLAT

☐ AMENDED REPORT

API Number 30-025-39547	Pool Code 62700	Pool Name Wantz-Abo Pool
Property Code 306053	Property Name BUNIN	Well Number 6
OGRID No. 873	Operator Name APACHE CORPORATION	Elevation 3460'

Surface Location

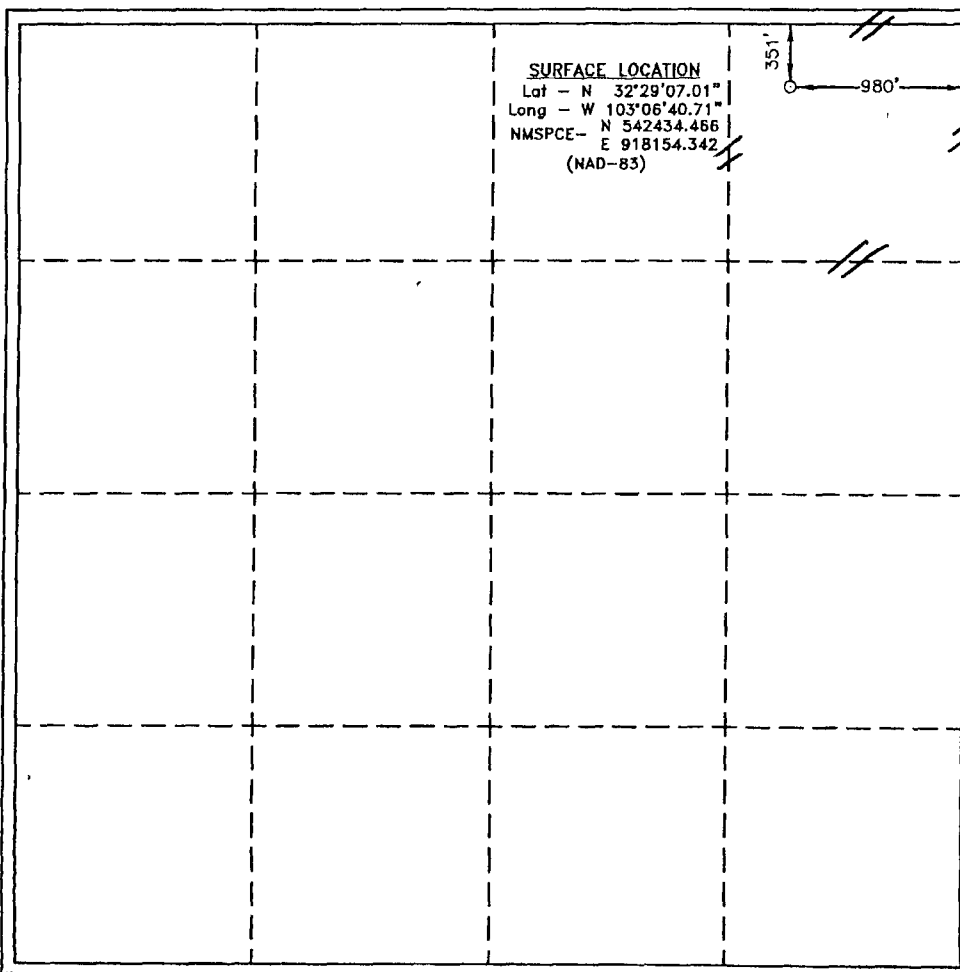
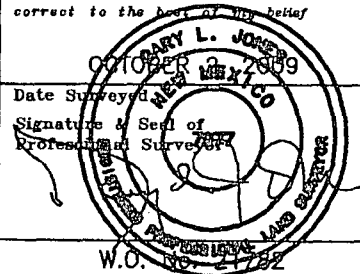
UL or lot No. A	Section 13	Township 21 S	Range 37 E	Lot Idn	Feet from the 351	North/South line NORTH	Feet from the 980	East/West line EAST	County LEA
---------------------------	----------------------	-------------------------	----------------------	---------	-----------------------------	----------------------------------	-----------------------------	-------------------------------	----------------------

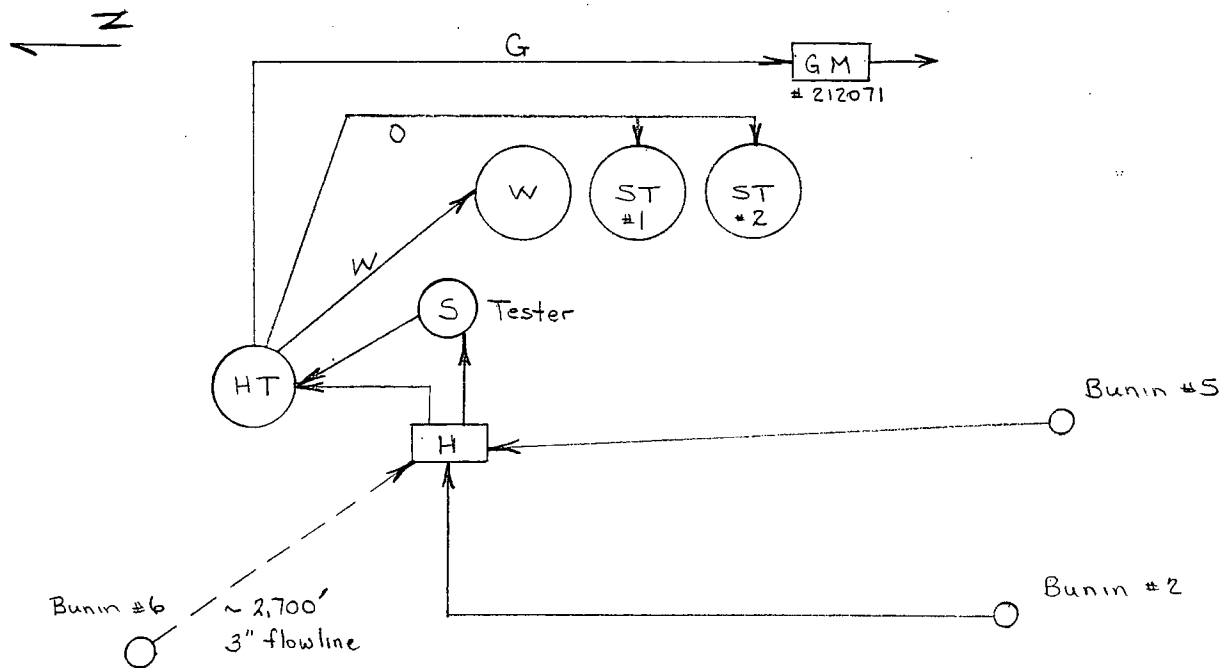
Bottom Hole Location If Different From Surface

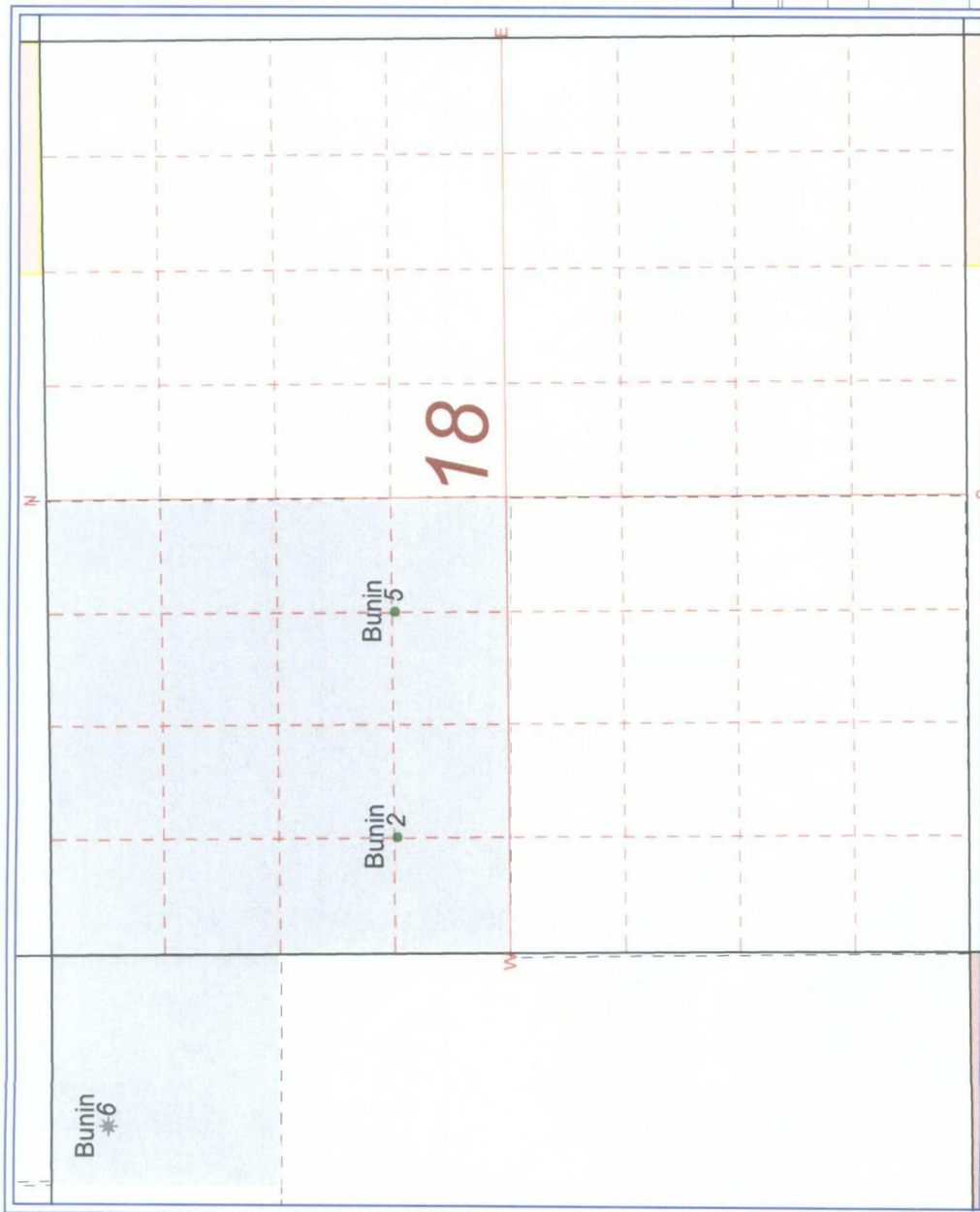
UL or lot No.	Section	Township	Range	Lot Idn	Feet from the	North/South line	Feet from the	East/West line	County
---------------	---------	----------	-------	---------	---------------	------------------	---------------	----------------	--------

Dedicated Acres 40	Joint or Infill	Consolidation Code	Order No.
------------------------------	-----------------	--------------------	-----------

NO ALLOWABLE WILL BE ASSIGNED TO THIS COMPLETION UNTIL ALL INTERESTS HAVE BEEN CONSOLIDATED
OR A NON-STANDARD UNIT HAS BEEN APPROVED BY THE DIVISION

	SURFACE LOCATION Lat - N 32°29'07.01" Long - W 103°06'40.71" NMSPCE - N 542434.466 E 918154.342 (NAD-83)
	OPERATOR CERTIFICATION I hereby certify that the information contained herein is true and complete to the best of my knowledge and belief, and that this organization either owns a working interest or unleased mineral interest in the land including the proposed bottom hole location pursuant to a contract with an owner of such a mineral or working interest, or to a voluntary pooling agreement or a compulsory pooling order heretofore entered by the division. David Catanach 11/16/09 Signature Date David Catanach Printed Name
	SURVEYOR CERTIFICATION I hereby certify that the well location shown on this plat was plotted from field notes of actual surveys made by me or under my supervision, and that the same is true and correct to the best of my belief. GARY L. JONES Date Surveyed Signature & Seal of Professional Surveyor  W.O. No. 21782
	Certificate No. Gary L. Jones 7977
	Basin Surveys





PETRA 12/17/2009 2:28:00 PM

APACHE CORPORATION
Bunin Lease
Lea Co., NM
0 1,000 FEET
December 17, 2009



December 16, 2009

New Mexico Oil Conservation Division
1220 South St. Francis Drive
Santa Fe, New Mexico 87505

RE: Surface Commingle
Bunin #2 (30-025-07903)
Bunin #5 (30-025-22949)
Bunin #6 (30-025-39547)
Township 21 South, Range 37 East; N.M.P.M.:
Section 13; NE/4NE/4
Township 21 South, Range 38 East; N.M.P.M.:
Section 18; NW/4
Lea County, New Mexico

To Whom It May Concern:

Apache Corporation owns 100% leasehold working interest, as to all depths, in and to the referenced lands and wellbores. Additionally, revenue interest ownership among the Bunin #2, #5 and #6 wells is identical.

Should you have any questions, please contact the undersigned at (918) 491-4838.

Sincerely,
APACHE CORPORATION

A handwritten signature in black ink that reads "Michelle Hanson". The signature is written in a cursive, flowing style.

Michelle Hanson
Registered Landman
(918) 491-4854 Fax
michelle.hanson@apachecorp.com