



**Marathon  
Oil Company**

P.O. Box 552  
Midland, TX 79702-0552  
Telephone 915/682-1626

November 2, 1994

State of New Mexico  
Oil Conservation Division  
P. O. Box 2088  
Santa Fe, New Mexico 87504-2088

Attn: Mr. William J. Lemay

RE: Application for Administrative  
Approval for Simultaneous Dedication  
W. H. Laughlin No. 6  
Unit F, 1,980' FNL & 2,250' FWL  
Section 9, T-20-S, R-37-E  
Eumont Yates-Seven Rivers-Queen Pool  
Lea County, New Mexico

*Received  
OCD 11/7/94*

*API # 30-025-32465*

Gentlemen:

Marathon Oil Company respectfully requests Administrative approval of our application for simultaneous dedication of Eumont Gas production from the W. H. Laughlin No. 6 (to be drilled and completed in November, 1994) with the W. H. Laughlin Nos. 3 and 5 in our W. H. Laughlin lease. The W. H. Laughlin lease is a non-standard 160-acre proration unit comprising the S/2 N/2 of Section 9, T-20-S, R-37-E, Lea County, New Mexico.

In support of this application, please find attached plats outlining the Gas Proration Unit.

Sincerely,

*L. N. Hoover*

L. N. Hoover

cc: Mr. Jerry Sexton  
District I  
State of New Mexico  
Oil Conservation Division  
P. O. Box 1980  
Hobbs, New Mexico 88241-1980

LNH134.sk

State of New Mexico  
Energy, Minerals and Natural Resources Department

Form C-102  
Revised 1-1-89

OIL CONSERVATION DIVISION

P.O. Box 2088  
Santa Fe, New Mexico 87504-2088

DISTRICT I

P.O. Box 1980, Hobbs, NM 88240

DISTRICT II

P.O. Drawer 88, Artesia, NM 88210

DISTRICT III

1008 Els Brasos Rd., Aztec, NM 87410

WELL LOCATION AND ACREAGE DEDICATION PLAT

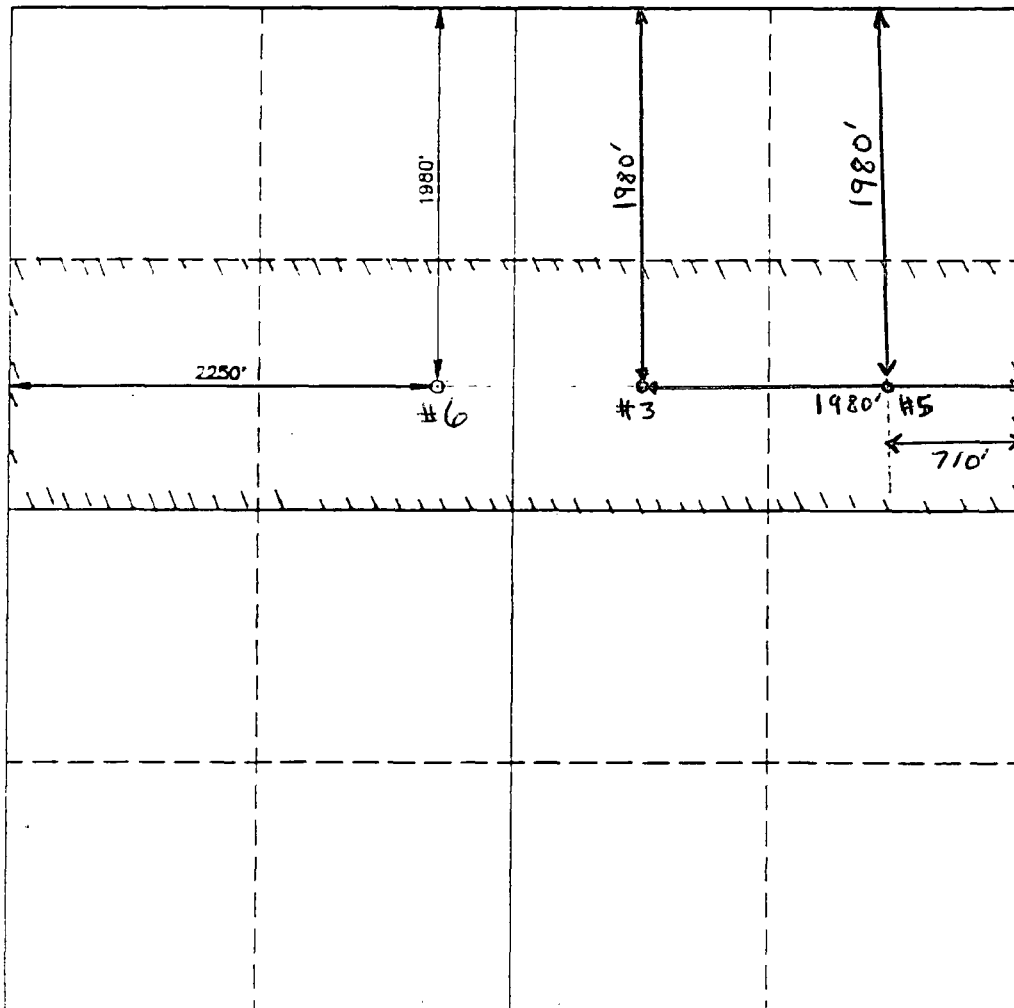
All Distances must be from the outer boundaries of the section

Operator MARATHON OIL COMPANY			Lease W.H. LAUGHLIN		Well No. 6
Unit Letter F	Section 9	Township 20 SOUTH	Range 37 EAST	NMPM	County LEA
Actual Footage Location of Well: 1980 feet from the NORTH line and 2250 feet from the WEST line					
Ground Level Elev. 3544'	Producing Formation Yates, SR. CN		Pool Eumont	Dedicated Acreage: 160 Acres	

- Outline the acreage dedicated to the subject well by colored pencil or hatchure marks on the plat below.
- If more than one lease is dedicated to the well, outline each and identify the ownership thereof (both as to working interest and royalty).
- If more than one lease of different ownership is dedicated to the well, have the interest of all owners been consolidated by communitization, unitization, forced-pooling, etc.?  
☐ Yes ☐ No If answer is "yes" type of consolidation \_\_\_\_\_

If answer is "no" list of owners and tract descriptions which have actually been consolidated. (Use reverse side of this form necessary.)

No allowable will be assigned to the well unit all interests have been consolidated (by communitization, unitization, forced-pooling, otherwise) or until a non-standard unit, eliminating such interest, has been approved by the Division.



OPERATOR CERTIFICATION

I hereby certify the the information  
contained herein is true and complete to the  
best of my knowledge and belief.

Signature

*T. B. Arnold*

Printed Name

T. B. Arnold

Position

Drig. Supt.

Company

Marathon Oil Company

Date

3-11-94

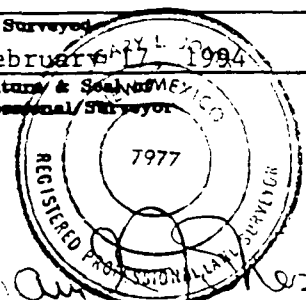
SURVEYOR CERTIFICATION

I hereby certify that the well location shown  
on this plat was plotted from field notes of  
actual surveys made by me or under my  
supervision, and that the same is true and  
correct to the best of my knowledge and  
belief.

Date Surveyed

February 17, 1994

Signature & Seal of Surveyor  
Professional Surveyor



Certificate No. JOHN W. WEST, 6761

RONALD J. EIDSON, 3239

GARY L. JONES, 7977

94-11-0294

0 330 660 990 1320 1650 1980 2310 2640 2000 1500 1000 500 0



STATE OF NEW MEXICO  
ENERGY, MINERALS AND NATURAL RESOURCES DEPARTMENT  
OIL CONSERVATION DIVISION



BRUCE KING  
GOVERNOR

ANITA LOCKWOOD  
CABINET SECRETARY

POST OFFICE BOX 2088  
STATE LAND OFFICE BUILDING  
SANTA FE, NEW MEXICO 87504  
(505) 827-5800

February 4, 1994

Marathon Oil Company  
P. O. Box 552  
Midland, Texas 79702-0552

Attention: Meftah Tiss

*Administrative Order SD-94-2*

Dear Mr. Tiss:

Per your application dated December 31, 1993, you are hereby authorized to simultaneously dedicate Eumont Gas Pool production to the previously approved non-standard 160-acre gas spacing and proration unit comprising the S/2 N/2 of Section 9, Township 20 South, Range 37 East, NMPM, Lea County, New Mexico (Division Order No. R-527-A, dated October 4, 1954), from the existing W. H. Laughlin Well No. 3 (API No. 30-025-06036) located at a standard gas well location 1980 feet from the North and East lines (Unit G) of said Section 9 and from the proposed W. H. Laughlin Well No. 5 (API No. 30-025-32380) to be drilled at a standard gas well location 1980 feet from the North line and 710 feet from the East line (Unit H) of said Section 9.

Further, you are permitted to produce the allowable assigned said non-standard 160-acre unit from both wells in any proportion.

Sincerely,

A handwritten signature in black ink, appearing to read "William J. LeMay".

William J. LeMay  
Director

WJL/MES/amg

cc: Oil Conservation Division - Hobbs