

SD

N/R

**Chevron**

May 5, 1997

Administrative Application For Simultaneous Dedication
Eumont Yates 7Rvrs Qn (Pro Gas) Pool
S. E. Felton #5
1980' FSL and 1980' FEL
Section 28, T-21-S, R-36-E
Lea County, New Mexico

Chevron U.S.A. Production Company
P.O. Box 1150
Midland, TX 79702

MAY - 8 1997

State of New Mexico
Energy, Minerals & Natural Resources Dept.
Oil Conservation Division
2040 South Pacheco
Santa Fe, New Mexico 87504

Attn: Mr. William J. LeMay -- Director

Gentlemen:

Chevron U.S.A. Inc. respectfully requests your approval of this administrative application for Simultaneous Dedication.

Chevron is planning to drill and complete the S. E. Felton #5 in the Eumont Yates 7 Rvrs Qn (Pro Gas) Pool. It is our desire to simultaneously dedicate the existing 160-acre Eumont Gas Proration Unit currently assigned to our S. E. Felton #1, and #2 [Administrative Order NSP-272] to all three wells. The 160-acre gas proration unit comprises the SE/4 of Section 28, T-21-S, R-36-E, Lea County, New Mexico. As the S. E. Felton #1 and #2 are producing at a current rate of 480 MCF/D, the proposed new drill of Well #5 will essentially capture reserves which otherwise would not be produced from this GPU.

Chevron respectfully requests your approval of this administrative application for simultaneous dedication. Attached is a vicinity map, location verification map and a Form C-102 plat.

If you have any questions or require any further information concerning this application, please contact me at (915) 687-7347.

Yours very truly,

J. H. Saenz
Petroleum Engineer

JHS/trk
Attachments

cc: NMOCD -- Hobbs, NM
J. K. Ripley
N. V. Mouser

D. K. Beckham
J. B. Wilkinson
Central Files - Lease/Well Files

DISTRICT I

P.O. Box 1980, Hobbs, NM 88241-1980

State of New Mexico

Energy, Minerals and Natural Resources Department

Form C-102

Revised February 10, 1994

Submit to Appropriate District Office

State Lease - 4 Copies

Fee Lease - 3 Copies

DISTRICT II

P.O. Drawer DD, Artesia, NM 88211-0719

DISTRICT III

1000 Rio Brazos Rd., Aztec, NM 87410

OIL CONSERVATION DIVISION

P.O. Box 2088

Santa Fe, New Mexico 87504-2088

DISTRICT IV

P.O. Box 2088, Santa Fe, NM 87504-2088

☐ AMENDED REPORT

WELL LOCATION AND ACREAGE DEDICATION PLAT

API Number	Pool Code	Pool Name
Property Code	Property Name S. E. FELTON	Well Number 5
OGRID No.	Operator Name CHEVRON U. S. A. INC.	Elevation 3599

Surface Location

UL or lot No. J	Section 28	Township 21 S	Range 36 E	Lot Idn	Feet from the 1980	North/South line SOUTH	Feet from the 1980	East/West line EAST	County LEA
--------------------	---------------	------------------	---------------	---------	-----------------------	---------------------------	-----------------------	------------------------	---------------

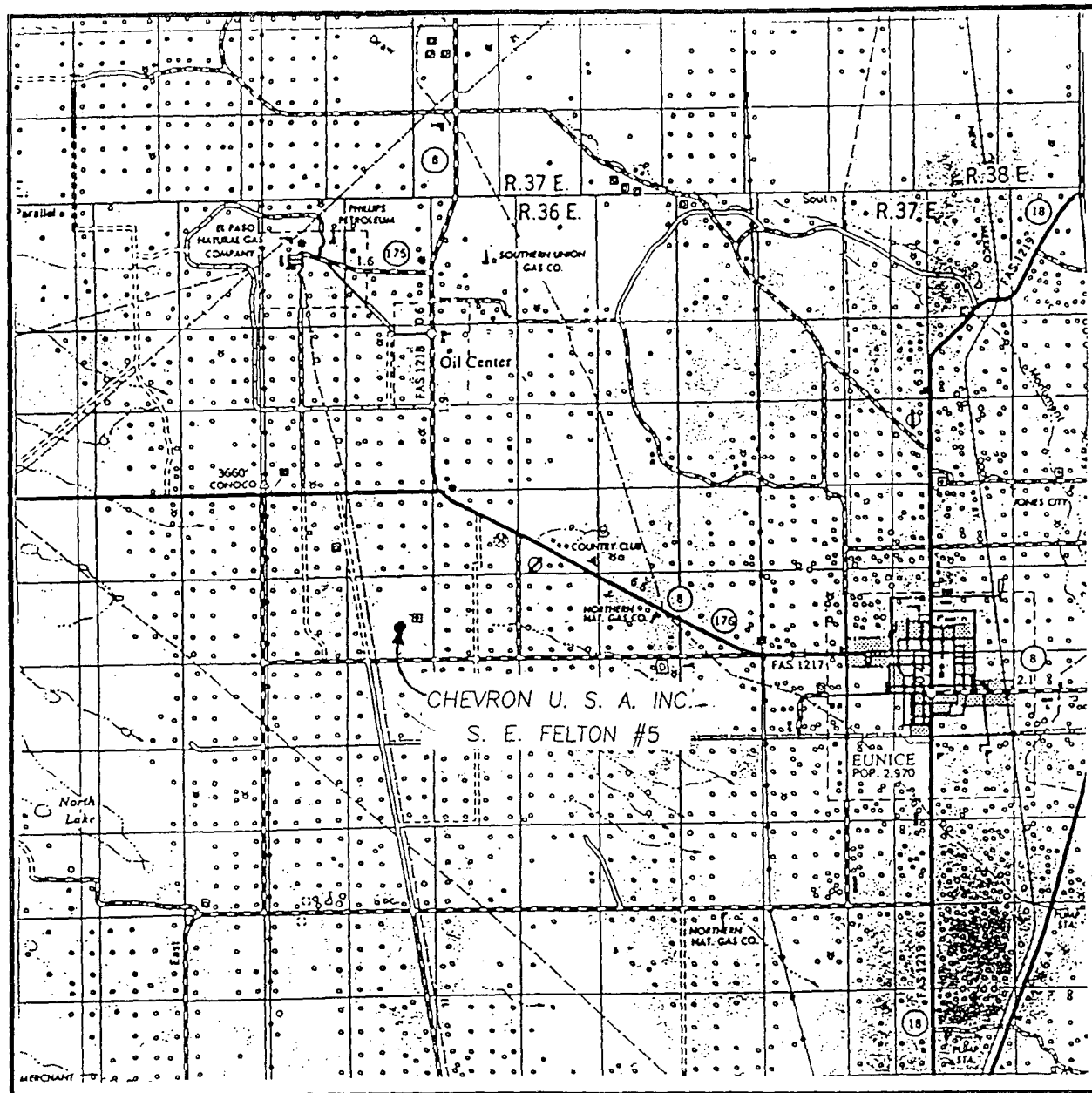
Bottom Hole Location If Different From Surface

UL or lot No.	Section	Township	Range	Lot Idn	Feet from the	North/South line	Feet from the	East/West line	County
Dedicated Acres	Joint or Infill	Consolidation Code	Order No.						

NO ALLOWABLE WILL BE ASSIGNED TO THIS COMPLETION UNTIL ALL INTERESTS HAVE BEEN CONSOLIDATED
OR A NON-STANDARD UNIT HAS BEEN APPROVED BY THE DIVISION

	OPERATOR CERTIFICATION I hereby certify the information contained herein is true and complete to the best of my knowledge and belief. Signature _____ Printed Name _____ Title _____ Date _____	
	SURVEYOR CERTIFICATION I hereby certify that the well location shown on this plat was plotted from field notes of actual surveys made by me or under my supervision and that the same is true and correct to the best of my belief. DECEMBER 11, 1996 Date Surveyed _____ JLP Signature & Seal of Professional Surveyor 	
	W.O. Num. 96-13-1637 Certificate No. JOHN M. WEST, 676 RONALD J. EIDSON, 3239 GARY G. EIDSON, 12641	

VICINITY MAP



SCALE: 1" = 2 MILES

SEC. 28 TWP. 21-S RGE. 36-E

SURVEY N.M.P.M.

COUNTY LEA

DESCRIPTION 1980' FSL & 1980' FEL

ELEVATION 3599'

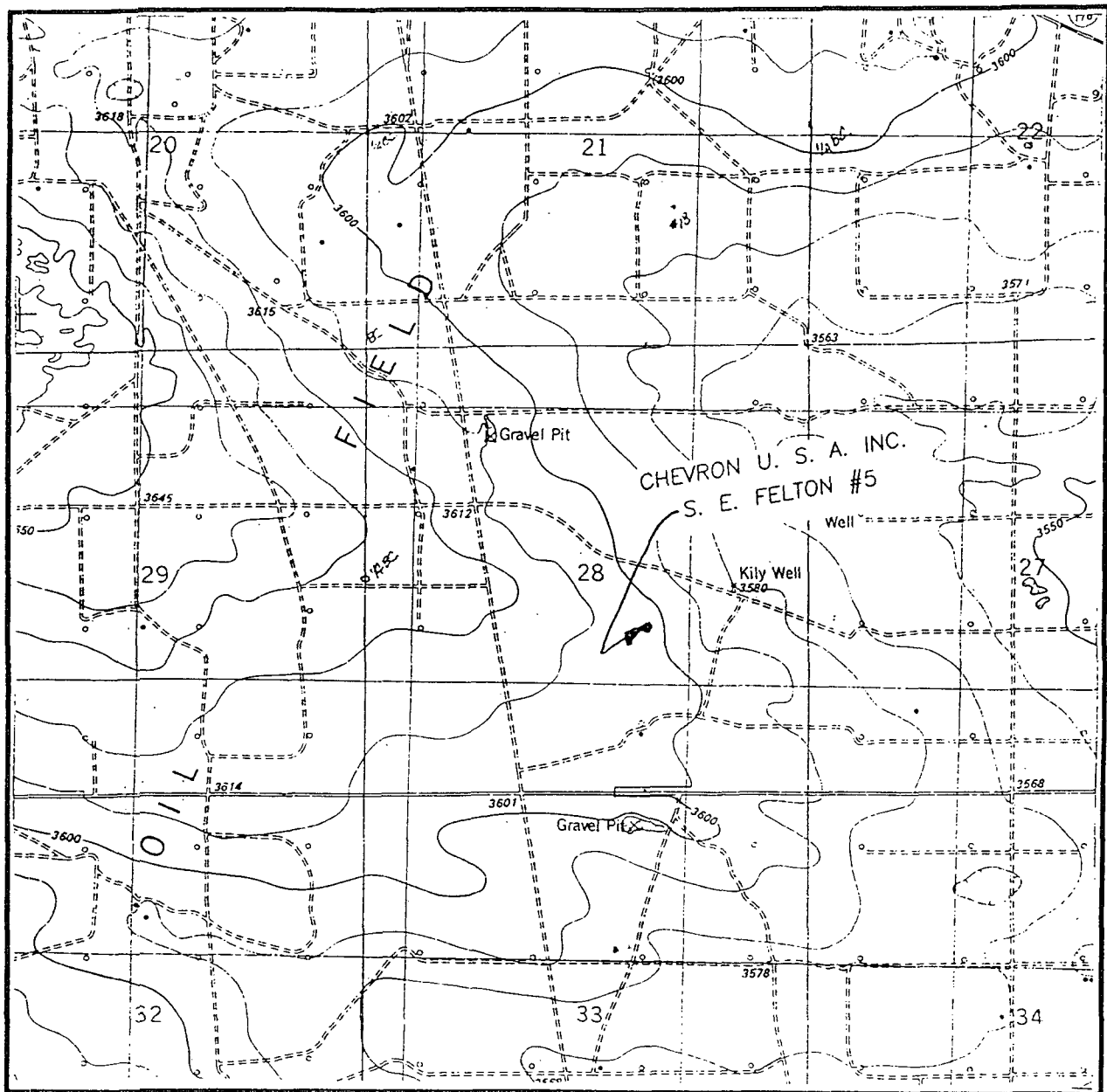
OPERATOR CHEVRON U. S. A. INC.

LEASE S. E. FELTON

JOHN WEST ENGINEERING
HOBBS, NEW MEXICO

(505) 393-3117

LOCATION VERIFICATION MAP



SCALE: 1" = 2000'

CONTOUR INTERVAL - 10'

SEC. 28 TWP. 21-S RGE. 36-E

SURVEY N.M.P.M.

COUNTY LEA

DESCRIPTION 1980' FSL & 1980' FEL

ELEVATION 3599'

OPERATOR CHEVRON U. S. A. INC.

LEASE S. E. FELTON

U.S.G.S. TOPOGRAPHIC MAP

OIL CENTER, N.M.

JOHN WEST ENGINEERING
HOBBS, NEW MEXICO

(505) 393-3117

OIL CONSERVATION COMMISSION

P. O. BOX 871

SANTA FE, NEW MEXICO

June 27, 1956

C
Gulf Oil Corporation
P. O. Drawer 1290
Fort Worth 1, Texas

Attention: Mr. B. E. Thompson

Administrative Order NSP-272

O
Gentlemen:

Reference is made to your application for approval of a 160-acre non-standard gas proration unit in the Eumont Gas Pool consisting of the following acreage:

P
Y
Township 21 South, Range 36 East
SE/4 of Section 28

It is understood that this unit is to be ascribed to your S. E. Felton Well No. 1, located 560 feet from the south and east lines and in the SE/4 SE/4 of Section 28, Township 21 South, Range 36 East, NMPM, Lea County, New Mexico.

By authority granted me under provisions of Rule 5, Section (b)-6 of the Special Rules and Regulations for the Eumont Gas Pool, as set forth in Order R-528 you are hereby authorized to operate the above described acreage as a non-standard gas proration unit, with allowable to be assigned thereto in accordance with pool rules, based upon the unit size of 160 acres.

Very truly yours,

A. L. PORTER, JR.,
Secretary - Director

ALP:WWM:ds

cc: Oil Conservation Commission
N. M. Oil & Gas Engineering Committee - Hobbs
El Paso Natural Gas Co. - Jal
El Paso Natural Gas Co. - El Paso