

PNRM0822837880

C-103 Received 7-12-2008
DHC No. Assigned 8-15-2008

Order Number	API Number	Operator	County
HOB-0248A	30-025-38665	Apache Corporation	Lea

Order Date	Well Name	Number	Location			
	House	002	D UL	13 Sec	20S T (+Dir)	38E R (+Dir)

		Oil %	Gas %	
Pool 1	33225	House Blinebry, South	39%	33%
Pool 2	78960	House Tubb	19%	2%
Pool 3	33250	House Drinkard	42%	65%
Pool 4				

Comments:

Posted to
RBDMA
8-15-2008 (3)

DOWNHOLE COMMINGLE CALCULATIONS:

30-025-38665
HOB-0248A

OPERATOR: Apache Corporation

PROPERTY NAME: House

WNULSTR: 2-D, 13-20-38

SECTION I:

33225 POOL NO. 1 House Blinebry, South

ALLOWABLE AMOUNT

142 284 MCF 2000

78760 POOL NO. 2 House Tubb

142 284 MCF 2000

33250 POOL NO. 3 House Drinkard

142 284 MCF 2000

POOL NO. 4 _____

POOL TOTALS 426 852 MCF

SECTION II:

POOL NO. 1 House Blinebry, South

Oil

Gas

39%

33%

POOL NO. 2 House Tubb

19%

2%

POOL NO. 3 House Drinkard

42% X 426 = 178.92

65%

POOL NO. 4 _____

OIL

GAS

SECTION III:

142 + 42% = 338.096 (339)

SECTION IV:

339 X 39% = 132.21 (132)

339 X 19% = 64.41 (65)

339 X 42% = 142.38 (142)

Office

District I

1625 N. French Dr., Hobbs, NM 88240

District II

1301 W. Grand Ave., Artesia, NM 88210

District III

1000 Rio Brazos Rd., Aztec, NM 87412

District IV

10 S. St. Francis Dr., Santa Fe, NM 87505

Energy, Minerals and Natural Resources

May 27, 2004

OIL CONSERVATION DIVISION

1220 South St. Francis Dr.

Santa Fe, NM 87505

WELL API NO.

30-025-38665

5. Indicate Type of Lease

STATE ☐ FEE ☒

6. State Oil & Gas Lease No.

N/A

7. Lease Name or Unit Agreement Name
House

8. Well Number #002

9. OGRID Number 00873

10. Pool name or Wildcat
H; Blinebry, S / H; Tubb / H; DrinkardSUNDRY NOTICES AND REPORTS ON WELLS
(DO NOT USE THIS FORM FOR PROPOSALS TO DRILL OR TO DEEPEN OR PLUG BACK TO A DIFFERENT RESERVOIR. USE "APPLICATION FOR PERMIT" (FORM C-101) FOR SUCH PROPOSALS.)1. Type of Well: Oil Well ☒ Gas Well ☐ Other

2. Name of Operator

Apache Corporation

3. Address of Operator 6120 S Yale Ave, Suite 1500
Tulsa, OK 74136-4224

4. Well Location

Unit Letter D : 990 feet from the North line and 990 feet from the West line
Section 13 Township 20S Range 38E NMPM County Lea11. Elevation (Show whether DR, RKB, RT, GR, etc.)
3557' GRPit or Below-grade Tank Application ☐ or Closure ☐

Pit type _____ Depth to Groundwater _____ Distance from nearest fresh water well _____ Distance from nearest surface water _____

Pit Liner Thickness: _____ mil Below-Grade Tank: Volume _____ bbls; Construction Material _____

12. Check Appropriate Box to Indicate Nature of Notice, Report or Other Data

NOTICE OF INTENTION TO:

PERFORM REMEDIAL WORK ☐ PLUG AND ABANDON ☐TEMPORARILY ABANDON ☐ CHANGE PLANS ☐DRILL OR ALTER CASING ☐ MULTIPLE COMPL ☐OTHER: Request DHC: Blinebry/Tubb/Drinkard ☒

SUBSEQUENT REPORT OF:

REMEDIAL WORK ☐ ALTERING CASING ☐COMMENCE DRILLING OPNS. ☐ P AND A ☐CASING/CEMENT JOB ☐OTHER: ☐

13. Describe proposed or completed operations. (Clearly state all pertinent details, and give pertinent dates, including estimated date of starting any proposed work). SEE RULE 1103. For Multiple Completions: Attach wellbore diagram of proposed completion or recompletion.

Pursuant to Division Order R-11363

Pool Names: House; Blinebry, South 33225
House; Tubb 78760
House; Drinkard 33250

Perforations:

BLINEBRY 6022-26, 6076-80, 6116-20, 6200-04, 6270-74' 2 JSPF
TUBB 6510-14, 6576-80, 6618-22, 6682-86, 6728-32' 2 JSPF
DRINKARD 6940-44, 6954-58, 6974-78, 6990-94, 7034-38' 2 JSPF

The allocation method will be as follows:

	Test	26 BO	X 192 MCF	X 168 BW
Blinebry	10 BO	39%	63 MCF	33% 22 BW 13%
Tubb	5 BO	19%	4 MCF	2% 146 BW 87%
Drinkard	11 BO	42%	125 MCF	65% 0 BW 0%
TOTAL	26 BO	100%	192 MCF	100% 168 BW 100%

Downhole commingling will not reduce the value of these pools.

Ownership is the same for each of these pools.

DHC Order No:

HOB-0248A

I hereby certify that the information above is true and complete to the best of my knowledge and belief. I further certify that any pit or below-grade tank has been/will be constructed or closed according to NMOCD guidelines ☐, a general permit ☐ or an (attached) alternative OCD-approved plan ☐.

SIGNATURE

Sophie Mackay

TITLE Engineering Tech

DATE 07/17/2008

or print name Sophie Mackay

E-mail address: sophie.mackay@apachecorp.com Telephone No. (918)491-4864

For State Use Only

APPROVED BY:

Chris Williams

TITLE

OCD DISTRICT SUPERVISOR GENERAL MANAGER

DATE AUG 15 2008

Conditions of Approval (if any):

State of New Mexico

Energy, Minerals and Natural Resources Department

DISTRICT I

1625 R. FRENCH DR., HOBBS, NM 88240

DISTRICT II

11 W. GRAND AVENUE, ARTESIA, NM 88210

DISTRICT III

1000 Rio Brazos Rd., Aztec, NM 87410

DISTRICT IV

1220 S. ST. FRANCIS DR., SANTA FE, NM 87505

OIL CONSERVATION DIVISION
1220 SOUTH ST. FRANCIS DR.
Santa Fe, New Mexico 87505

JUL 21 2008

Form C-102

Revised October 12, 2005

Submit to appropriate District Office

State Lease - 4 Copies

Federal Lease - 3 Copies

WELL LOCATION AND ACREAGE DEDICATION PLAT

☐ AMENDED REPORT

API Number 30-025-38665	Pool Code 33225	Pool Name House; Blinebry, South
Property Code 303218	Property Name HOUSE	Well Number 2
OGRID No. 873	Operator Name APACHE CORPORATION	Elevation 3557'

Surface Location

UL or lot No.	Section	Township	Range	Lot Idn	Feet from the	North/South line	Feet from the	East/West line	County
D	13	20-S	38-E		990	NORTH	990	West	LEA

Bottom Hole Location If Different From Surface

UL or lot No.	Section	Township	Range	Lot Idn	Feet from the	North/South line	Feet from the	East/West line	County

Dedicated Acres 40	Joint or Infill	Consolidation Code	Order No.
-----------------------	-----------------	--------------------	-----------

NO ALLOWABLE WILL BE ASSIGNED TO THIS COMPLETION UNTIL ALL INTERESTS HAVE BEEN CONSOLIDATED
OR A NON-STANDARD UNIT HAS BEEN APPROVED BY THE DIVISION

	<p>GEODETIC COORDINATES NAD 27 NME</p> <p>Y=576005.4 N X=877756.2 E</p> <p>LAT.=32.577561° N LONG.=103.107035° W</p> <p>LAT.=32°34'39.22" N LONG.=103°06'25.32" W</p>		<p>OPERATOR CERTIFICATION</p> <p>I hereby certify that the information herein is true and complete to the best of my knowledge and belief, and that this organization either owns a working interest or unleased mineral interest in the land including the proposed bottom hole location or has a right to drill this well at this location pursuant to a contract with an owner of such mineral or working interest, or to a voluntary pooling agreement or a compulsory pooling order heretofore entered by the division.</p> <p><i>S. Mackay</i> 4/29/08 Signature Date</p> <p>Sophie Mackay Printed Name</p>
	<p>SURVEYOR CERTIFICATION</p> <p>I hereby certify that the well location shown on this plat was plotted from field notes of actual surveys made by me or under my supervision, and that the same is true and correct to the best of my belief.</p> <p>DECEMBER 12 2007</p> <p>Date Surveyed</p> <p>Signature & Seal of Professional Surveyor</p> <p><i>Ronald J. Edson</i> 12/12/07</p> <p>Certificate No. GARY EDSON 12641 RONALD J. EDSON 3239</p>		

RECEIVED

DISTRICT I
1625 N. FRENCH DR., HOBBS, NM 88240

State of New Mexico
Energy, Minerals and Natural Resources Department

JUL 21 2008

Form C-102
October 12, 2005
Submitted to Appropriate District Office
State Lease - 4 Copies
Fee Lease - 3 Copies

DISTRICT II
W. GRAND AVENUE, ARTESIA, NM 88210

OIL CONSERVATION DIVISION
1220 SOUTH ST. FRANCIS DR.
Santa Fe, New Mexico 87505

DISTRICT III
1000 Rio Brazos Rd., Aztec, NM 87410

DISTRICT IV
1220 S. ST. FRANCIS DR., SANTA FE, NM 87505

WELL LOCATION AND ACREAGE DEDICATION PLAT

☐ AMENDED REPORT

API Number 30-025-38665	Pool Code 78760	Pool Name House; Tubb
Property Code 303218	Property Name HOUSE	Well Number 2
OGRID No. 873	Operator Name APACHE CORPORATION	Elevation 3557'

Surface Location

UL or lot No.	Section	Township	Range	Lot Idn	Feet from the	North/South line	Feet from the	East/West line	County
D	13	20-S	38-E		990	NORTH	990	West	LEA

Bottom Hole Location If Different From Surface

UL or lot No.	Section	Township	Range	Lot Idn	Feet from the	North/South line	Feet from the	East/West line	County
Dedicated Acres 40	Joint or Infill	Consolidation Code	Order No.						

NO ALLOWABLE WILL BE ASSIGNED TO THIS COMPLETION UNTIL ALL INTERESTS HAVE BEEN CONSOLIDATED
OR A NON-STANDARD UNIT HAS BEEN APPROVED BY THE DIVISION

	<p>GEODETIC COORDINATES NAD 27 NME</p> <p>Y=576005.4 N X=877756.2 E</p> <p>LAT.=32.577561° N LONG.=103.107035° W</p> <p>LAT.=32°34'39.22" N LONG.=103°06'25.32" W</p>		<p>OPERATOR CERTIFICATION</p> <p>I hereby certify that the information herein is true and complete to the best of my knowledge and belief, and that this organization either owns a working interest or unleased mineral interest in the land including the proposed bottom hole location or has a right to drill this well at this location pursuant to a contract with an owner of such mineral or working interest, or to a voluntary pooling agreement or a compulsory pooling order heretofore entered by the division.</p> <p><i>S. Mackay</i> 5/29/2008 Signature Date Sophie Mackay Printed Name</p>
	<p>SURVEYOR CERTIFICATION</p> <p>I hereby certify that the well location shown on this plat was plotted from field notes of actual surveys made by me or under my supervision, and that the same is true and correct to the best of my belief.</p> <p>DECEMBER 12 2007 DATE SURVEYED Signature & Seal of Professional Surveyor RONALD J. EIDSON 3239 5/19/07</p>		
	<p>Certificate No. GARY EIDSON 12641 RONALD J. EIDSON 3239</p>		

State of New Mexico

Energy, Minerals and Natural Resources Department

DISTRICT I

1625 N. FRENCH DR., HOBBS, NM 88240

DISTRICT II

301 W. GRAND AVENUE, ARTESIA, NM 88210

DISTRICT III

1000 Rio Brazos Rd., Aztec, NM 87410

DISTRICT IV

1220 S. ST. FRANCIS DR., SANTA FE, NM 87505

OIL CONSERVATION DIVISION

1220 SOUTH ST. FRANCIS DR.
Santa Fe, New Mexico 87505

JUL 21 2008

HOBBS OGD

Form C-102

Revised October 12, 2005

Submit to Appropriate District Office

State Lease - 4 Copies

Fee Lease - 3 Copies

WELL LOCATION AND ACREAGE DEDICATION PLAT

☐ AMENDED REPORT

API Number 30-025-38665	Pool Code 33250	Pool Name House; Drinkard
Property Code 303218	Property Name HOUSE	Well Number 2
OGRID No. 873	Operator Name APACHE CORPORATION	Elevation 3557'

Surface Location

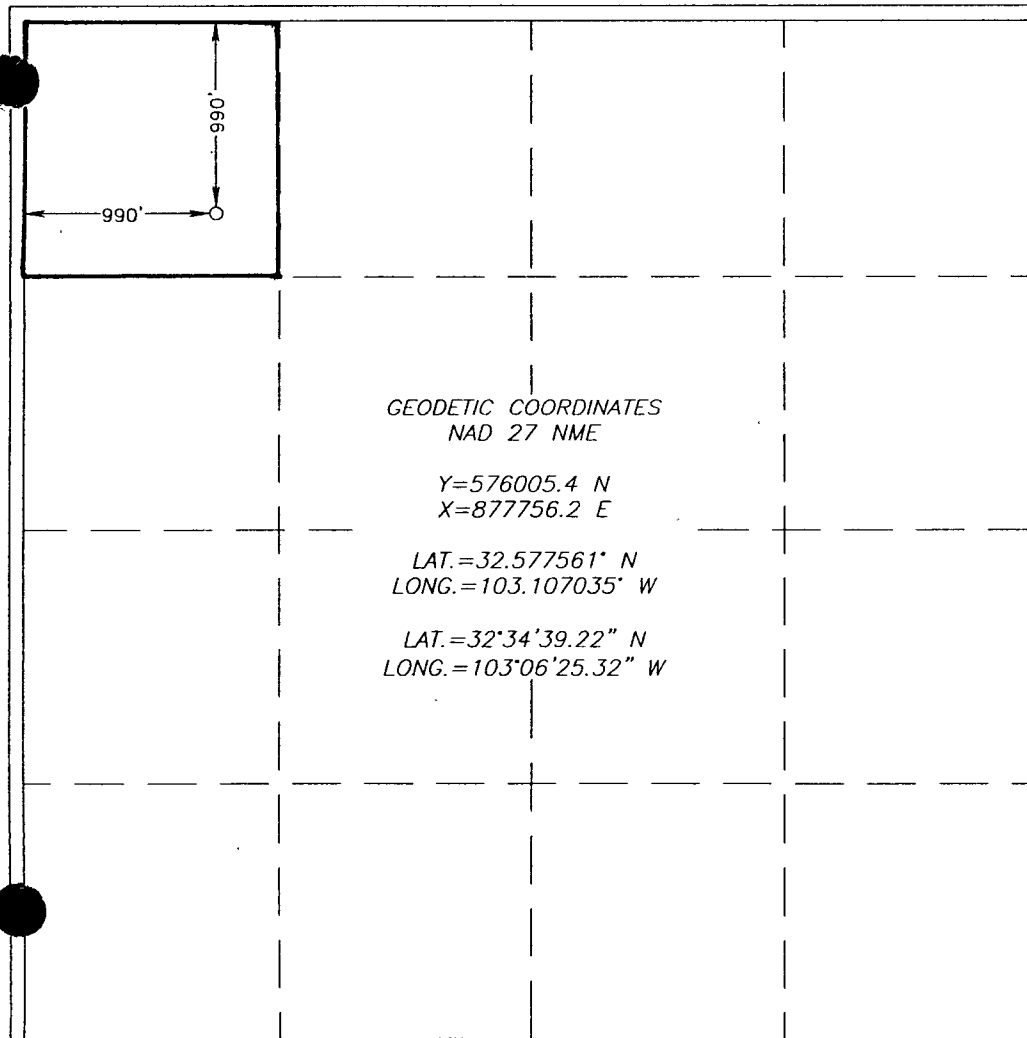
UL or lot No.	Section	Township	Range	Lot Idn	Feet from the	North/South line	Feet from the	East/West line	County
D	13	20-S	38-E		990	NORTH	990	West	LEA

Bottom Hole Location If Different From Surface

UL or lot No.	Section	Township	Range	Lot Idn	Feet from the	North/South line	Feet from the	East/West line	County

Dedicated Acres 40	Joint or Infill	Consolidation Code	Order No.
-----------------------	-----------------	--------------------	-----------

NO ALLOWABLE WILL BE ASSIGNED TO THIS COMPLETION UNTIL ALL INTERESTS HAVE BEEN CONSOLIDATED
OR A NON-STANDARD UNIT HAS BEEN APPROVED BY THE DIVISION



OPERATOR CERTIFICATION

I hereby certify that the information herein is true and complete to the best of my knowledge and belief, and that this organization either owns a working interest or unleased mineral interest in the land including the proposed bottom hole location or has a right to drill this well at this location pursuant to a contract with an owner of such mineral or working interest, or to a voluntary pooling agreement or a compulsory pooling order heretofore entered by the division.

Sophie Mackay 7/7/2008
Signature Date
Sophie Mackay
Printed Name

SURVEYOR CERTIFICATION

I hereby certify that the well location shown on this plat was plotted from field notes of actual surveys made by me or under my supervision, and that the same is true and correct to the best of my belief.

DECEMBER 12, 2007
Date Surveyed LA
Signature & Seal of Professional Surveyor
Ronald J. Eidson 12/4/07
07.11.1737
Certificate No. GARY EIDSON 12641
RONALD J. EIDSON 3239