

|                        |          |                     |                          |                 |                           |
|------------------------|----------|---------------------|--------------------------|-----------------|---------------------------|
| DATE IN <u>6-28-10</u> | SUSPENSE | ENGINEER <u>RE.</u> | LOGGED IN <u>6-28-10</u> | TYPE <u>CTB</u> | APP NO. <u>1017957940</u> |
|------------------------|----------|---------------------|--------------------------|-----------------|---------------------------|

ABOVE THIS LINE FOR DIVISION USE ONLY

**NEW MEXICO OIL CONSERVATION DIVISION**  
- Engineering Bureau -  
1220 South St. Francis Drive, Santa Fe, NM 87505



*Mewbourne*  
*Long Draw 9P, 90 & 91*

**ADMINISTRATIVE APPLICATION CHECKLIST** *30-015-37489*

THIS CHECKLIST IS MANDATORY FOR ALL ADMINISTRATIVE APPLICATIONS FOR EXCEPTIONS TO DIVISION RULES AND REGULATIONS  
WHICH REQUIRE PROCESSING AT THE DIVISION LEVEL IN SANTA FE *30-015-37118*

**Application Acronyms:**

**[NSL-Non-Standard Location] [NSP-Non-Standard Proration Unit] [SD-Simultaneous Dedication]**  
**[DHC-Downhole Commingling] [CTB-Lease Commingling] [PLC-Pool/Lease Commingling]**  
**[PC-Pool Commingling] [OLS - Off-Lease Storage] [OLM-Off-Lease Measurement]**  
**[WFX-Waterflood Expansion] [PMX-Pressure Maintenance Expansion]**  
**[SWD-Salt Water Disposal] [IPI-Injection Pressure Increase]**  
**[EOR-Qualified Enhanced Oil Recovery Certification] [PPR-Positive Production Response]**

- [1] **TYPE OF APPLICATION** - Check Those Which Apply for [A]
- [A] Location - Spacing Unit - Simultaneous Dedication  
☐ NSL ☐ NSP ☐ SD
- Check One Only for [B] or [C]
- [B] Commingling - Storage - Measurement  
☐ DHC ☒ CTB ☐ PLC ☐ PC ☐ OLS ☐ OLM
- [C] Injection - Disposal - Pressure Increase - Enhanced Oil Recovery  
☐ WFX ☐ PMX ☐ SWD ☐ IPI ☐ EOR ☐ PPR
- [D] Other: Specify \_\_\_\_\_

*CTB-617*

- [2] **NOTIFICATION REQUIRED TO:** - Check Those Which Apply, or ☐ Does Not Apply
- [A] ☒ Working, Royalty or Overriding Royalty Interest Owners
- [B] ☐ Offset Operators, Leaseholders or Surface Owner
- [C] ☐ Application is One Which Requires Published Legal Notice
- [D] ☐ Notification and/or Concurrent Approval by BLM or SLO  
U.S. Bureau of Land Management - Commissioner of Public Lands, State Land Office
- [E] ☐ For all of the above, Proof of Notification or Publication is Attached, and/or,
- [F] ☐ Waivers are Attached

*[14744]*

- [3] **SUBMIT ACCURATE AND COMPLETE INFORMATION REQUIRED TO PROCESS THE TYPE OF APPLICATION INDICATED ABOVE.**

[4] **CERTIFICATION:** I hereby certify that the information submitted with this application for administrative approval is **accurate** and **complete** to the best of my knowledge. I also understand that **no action** will be taken on this application until the required information and notifications are submitted to the Division.

**Note: Statement must be completed by an individual with managerial and/or supervisory capacity.**

Robin Terrell  
Print or Type Name

*Robin Terrell*  
Signature

SR Production Engineer  
Title

06/25/10  
Date

rterrell@mewbourne.com  
e-mail Address

MEWBOURNE OIL COMPANY  
PO BOX 5270  
HOBBS, NM 88240  
575-393-5905 FAX 575-397-6252

RECEIVED OCD

2010 JUN 28 P 2: 10

June 24, 2010

Engineering Bureau  
New Mexico Oil Conservation Division  
1220 S. St. Francis Drive  
Santa Fe, NM 87505

RE: Surface Commingle of Fee leases

To Whom It May Concern:

Mewbourne Oil Co is requesting permission to surface commingle production of wells producing from Unit letter I with wells producing from unit letters O & P. Both the Long Draw 9 O # 1 (API # 30-015-37118) & the Long Draw 9 P # 1 (API # 30-015-37489) have common ownership and currently produce to a battery located at the Long Draw 9 O # 1 well site (Unit 0 Sec 9, T20S, R25E Eddy Co, NM). Mewbourne Oil Co is currently drilling the Long Draw 9 I # 1 (API # 30-015-37485) and wish to bring it to this existing battery in order to save approximately \$150,000 in additional construction cost.

Please find enclosed the following for the application to surface commingle production from 2 Fee Leases located in Section 9, T20S, R25E Eddy County, NM.

- Form C107B
- Site diagram of production facility with pictures
- Explanation of testing procedure
- Form C-102 for leases
- Map showing entire section and corresponding leases
- Administrative Application Checklist
- List of all involved parties
- Copy of letter that was sent certified mail to all involved parties informing them of proposed surface commingle.

Mewbourne Oil Company would appreciate this commingle request being processed as soon as possible. If you need further information, please call me at (575) 390-4816.

Thank you,



Robin Terrell  
SR Production Engineer

District I  
1625 N. French Drive, Hobbs, NM 88240  
District II  
1301 W. Grand Ave, Artesia, NM 88210  
District III  
1000 Rio Brazos Road, Aztec, NM 87410  
District IV  
1220 S. St Francis Dr, Santa Fe, NM  
87505

State of New Mexico  
Energy, Minerals and Natural Resources Department

Form C-107-B  
Revised June 10, 2003

OIL CONSERVATION DIVISION

1220 S. St Francis Drive  
Santa Fe, New Mexico 87505

Submit the original  
application to the Santa Fe  
office with one copy to the  
appropriate District Office.

APPLICATION FOR SURFACE COMMINGLING (DIVERSE OWNERSHIP)

OPERATOR NAME: Mewbourne Oil Company

OPERATOR ADDRESS: PO Box 5270, Hobbs, NM 88241

APPLICATION TYPE:

☐ Pool Commingling ☒ Lease Commingling ☐ Pool and Lease Commingling ☐ Off-Lease Storage and Measurement (Only if not Surface Commingled)

LEASE TYPE: ☒ Fee ☐ State ☐ Federal

Is this an Amendment to existing Order? ☐ Yes ☒ No If "Yes", please include the appropriate Order No. \_\_\_\_\_

Have the Bureau of Land Management (BLM) and State Land office (SLO) been notified in writing of the proposed commingling ☐ Yes ☒ No  
Fee surface & minerals

(A) POOL COMMINGLING  
Please attach sheets with the following information

| (1) Pool Names and Codes | Gravities / BTU of<br>Non-Commingled<br>Production | Calculated Gravities /<br>BTU of Commingled<br>Production |  | Calculated Value of<br>Commingled<br>Production | Volumes |
|--------------------------|--|---|--|---|---------|
|                          |  |   |  |   |         |
|                          |  |   |  |   |         |
|                          |  |   |  |   |         |
|                          |  |   |  |   |         |
|                          |  |   |  |   |         |
|                          |  |   |  |   |         |

(2) Are any wells producing at top allowables? ☒ Yes ☐ No

(3) Has all interest owners been notified by certified mail of the proposed commingling? ☒ Yes ☐ No.

(4) Measurement type: ☒ Metering ☐ Other (Specify)

(5) Will commingling decrease the value of production? ☐ Yes ☒ No If "yes", describe why commingling should be approved

(B) LEASE COMMINGLING  
Please attach sheets with the following information

(1) Pool Name and Code. Cemetery Yeso 11795

(2) Is all production from same source of supply? ☒ Yes ☐ No

(3) Has all interest owners been notified by certified mail of the proposed commingling? ☒ Yes ☐ No

(4) Measurement type: ☒ Metering ☐ Other (Specify)

(C) POOL and LEASE COMMINGLING  
Please attach sheets with the following information

(1) Complete Sections A and E.

(D) OFF-LEASE STORAGE and MEASUREMENT  
Please attached sheets with the following information

(1) Is all production from same source of supply? ☐ Yes ☐ No

(2) Include proof of notice to all interest owners.

(E) ADDITIONAL INFORMATION (for all application types)  
Please attach sheets with the following information

(1) A schematic diagram of facility, including legal location.

(2) A plat with lease boundaries showing all well and facility locations. Include lease numbers if Federal or State lands are involved.

(3) Lease Names, Lease and Well Numbers, and API Numbers.

I hereby certify that the information above is true and complete to the best of my knowledge and belief.

SIGNATURE: Robin Terrell TITLE: SR Production Engineer DATE: 06/25/10

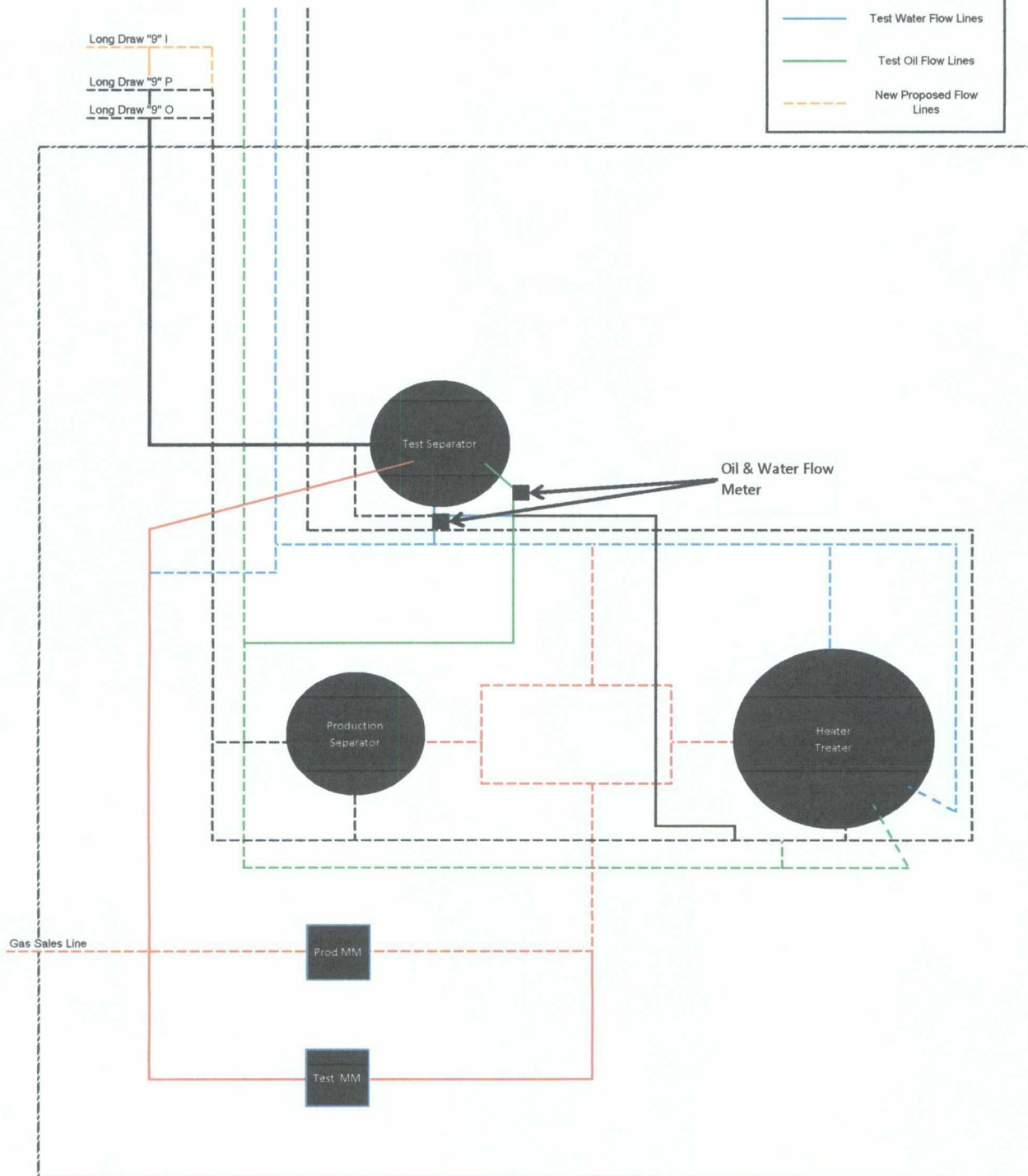
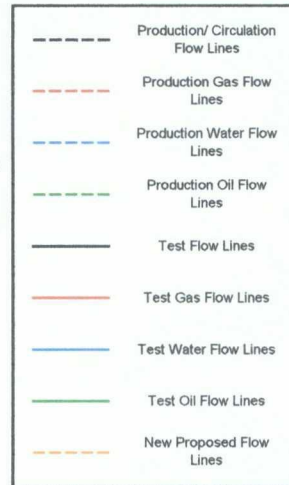
TYPE OR PRINT NAME Robin Terrell TELEPHONE NO.: 575-393-5905

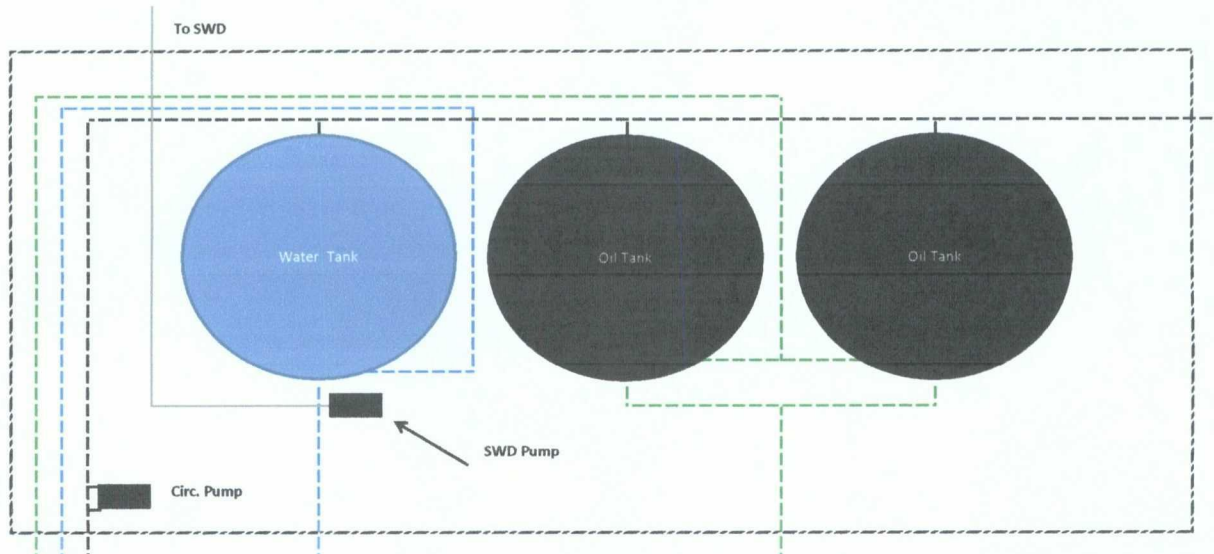
E-MAIL ADDRESS: rtterrell@mewbourne.com

# Long Draw "9" O & Long Draw "9" P Test & Production Separation Equipment

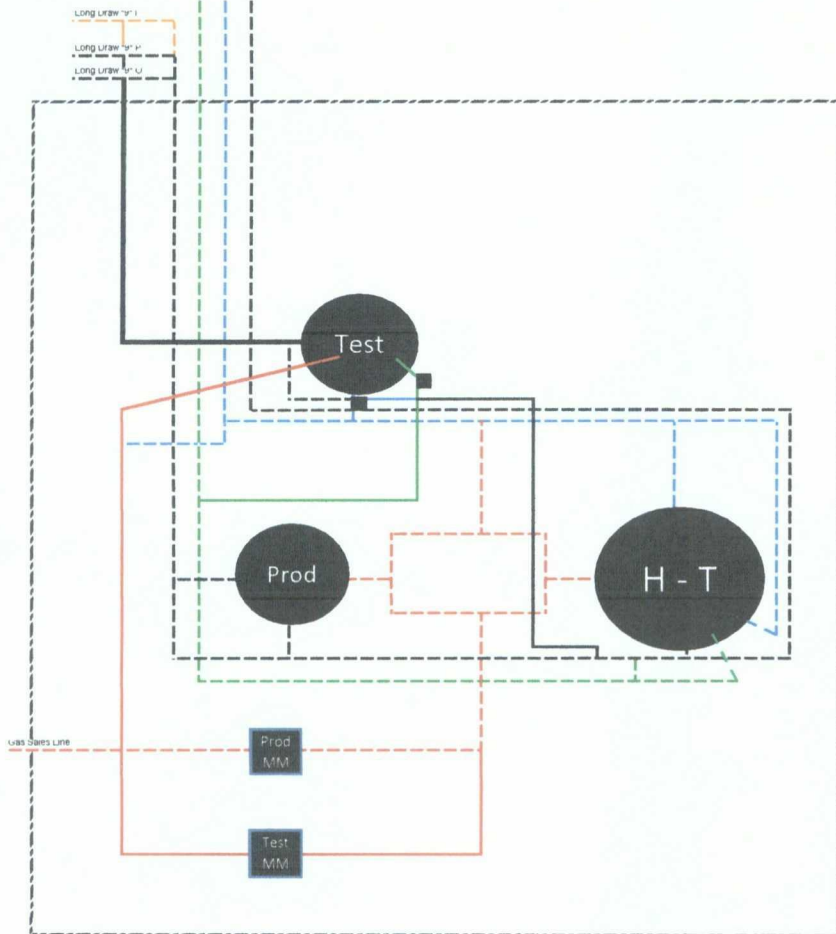
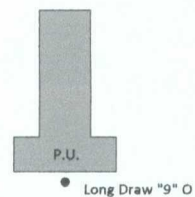
All oil and water from the test separator goes into the heater treater after passing through their respective flow meters. The gas from the test separator goes through it's own master meter then feeds into the production gas master meter.

Flow Lines to Tank Battery

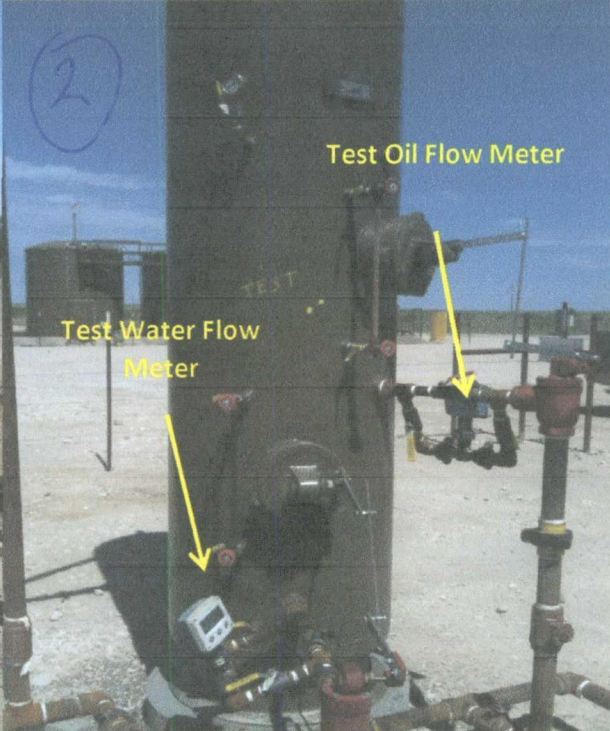
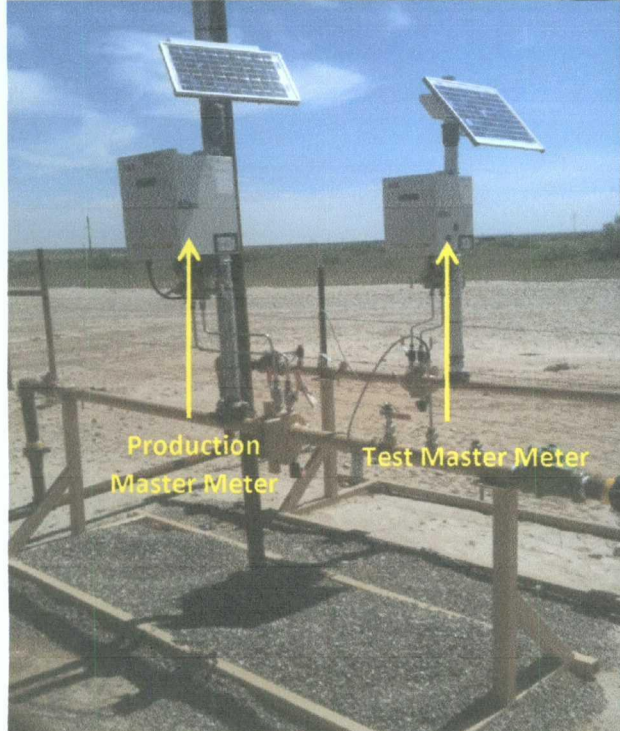
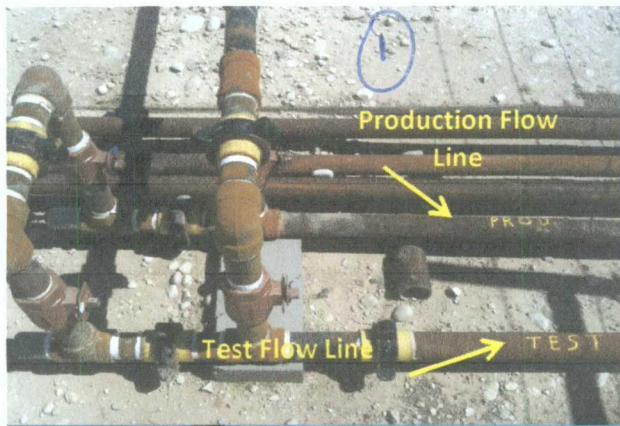




Long Draw "9" O (Location/Battery) & Long Draw "9" P (Battery)







## **Testing Procedure**

This production facility is equipped with a testing header. At the header produced fluids (oil, water, and gas) enter the production facility. (Header is seen in picture #1).

At the header produced fluids may be sent to the testing vessel or the production vessel. Only one well will be sent to the testing vessel at a given time. The other wells that flow to this battery will be sent to the production vessel. The testing vessel is a 3 phase separator (seen in picture # 2) that will meter all phases prior to it commingling with other producing wells. The oil will flow thru the oil dump and pass thru an oil meter and be recorded. The water will pass thru the water dump and thru a water meter and be recorded. The gas will flow out the top of the separator and then thru a gas test meter and then be commingled with gas from the other wells at the production meter. Once the fluids leave the 3 phase separator and pass thru the meters the volume of oil, water, and gas has been determined.

All wells will be tested for a period of no less than 3 days per month to achieve the most accurate test information. In this case where there are only 3 wells being tested at this battery so each well will have approximately 10 – (24 hr well test) each month. Well test information is recorded in our auditable production system by the name of eVIN. Wells will be rotated in test and then into the production separators throughout there producing lives.

Allocation of oil, water, and gas production in a testing facility is very simple. At the end of the month the battery made a given amount of oil, water, and gas and all wells that flow to that battery have been tested. The well test will be used to determine each wells contribution to the entire batteries production and from that each well will get its percent of oil, water, and gas produced.



DISTRICT I  
1625 N. French Dr., Hobbs, NM 88240  
DISTRICT II  
1301 W. Grand Avenue, Artesia, NM 88210

DISTRICT III  
1000 Rio Brazos Rd., Aztec, NM 87410

DISTRICT IV  
1220 S. St. Francis Dr., Santa Fe, NM 87505

State of New Mexico  
Energy, Minerals and Natural Resources Department

OIL CONSERVATION DIVISION  
1220 South St. Francis Dr.  
Santa Fe, New Mexico 87505

Form C-102  
Revised October 12, 2005

Submit to Appropriate District Office  
State Lease - 4 Copies  
Fee Lease - 3 Copies

WELL LOCATION AND ACREAGE DEDICATION PLAT

☐ AMENDED REPORT

|               |  |  |  |           |                    |
|---------------|--|--|--|-----------|--------------------|
| API Number    |  | Pool Code                              |  | Pool Name |                    |
| Property Code |  | Property Name<br>LONG DRAW "9" P       |  |           | Well Number<br>1   |
| OGRID No.     |  | Operator Name<br>MEWBOURNE OIL COMPANY |  |           | Elevation<br>3446' |

Surface Location

|                    |              |                  |               |         |                      |                           |                      |                        |                |
|--------------------|--------------|------------------|---------------|---------|----------------------|---------------------------|----------------------|------------------------|----------------|
| UL or lot No.<br>P | Section<br>9 | Township<br>20 S | Range<br>25 E | Lot Idn | Feet from the<br>410 | North/South line<br>SOUTH | Feet from the<br>330 | East/West line<br>EAST | County<br>EDDY |
|--------------------|--------------|------------------|---------------|---------|----------------------|---------------------------|----------------------|------------------------|----------------|

Bottom Hole Location If Different From Surface

|               |         |          |       |         |               |                  |               |                |        |
|---------------|---------|----------|-------|---------|---------------|------------------|---------------|----------------|--------|
| UL or lot No. | Section | Township | Range | Lot Idn | Feet from the | North/South line | Feet from the | East/West line | County |
|---------------|---------|----------|-------|---------|---------------|------------------|---------------|----------------|--------|

|                 |                 |                    |           |
|-----------------|-----------------|--------------------|-----------|
| Dedicated Acres | Joint or Infill | Consolidation Code | Order No. |
|-----------------|-----------------|--------------------|-----------|

NO ALLOWABLE WILL BE ASSIGNED TO THIS COMPLETION UNTIL ALL INTERESTS HAVE BEEN CONSOLIDATED  
OR A NON-STANDARD UNIT HAS BEEN APPROVED BY THE DIVISION

|  |  |
|--|--|
|  | <b>OPERATOR CERTIFICATION</b><br><br><i>I hereby certify that the information contained herein is true and complete to the best of my knowledge and belief, and that this organization either owns a working interest or unleased mineral interest in the land including the proposed bottom hole location pursuant to a contract with an owner of such a mineral or working interest, or to a voluntary pooling agreement or a compulsory pooling order heretofore entered by the division.</i><br><br>Signature _____ Date _____<br><br>Printed Name _____ |
|  | <b>SURVEYOR CERTIFICATION</b><br><br><i>I hereby certify that the well location shown on this plat was plotted from field notes of actual surveys made by me or under my supervision, and that the same is true and correct to the best of my belief.</i><br><br>SEPTEMBER 2009<br>Date Surveyed _____<br>Signature _____ Seal of Professional Surveyor 7977<br><br>Certificate No. Gary L. Jones 7977<br><br>BASIN SURVEYS  |
|  |  |
|  |  |



DISTRICT I  
1625 N. French Dr., Hobbs, NM 88240  
DISTRICT II  
1301 W. Grand Avenue, Artesia, NM 88210  
DISTRICT III  
1000 Rio Brazos Rd., Aztec, NM 87410  
DISTRICT IV  
1220 S. St. Francis Dr., Santa Fe, NM 87505

State of New Mexico  
Energy, Minerals and Natural Resources Department

Form C-102  
Revised October 12, 2005

Submit to Appropriate District Office  
State Lease - 4 Copies  
Fee Lease - 3 Copies

**OIL CONSERVATION DIVISION**  
1220 South St. Francis Dr.  
Santa Fe, New Mexico 87505

**WELL LOCATION AND ACREAGE DEDICATION PLAT**

☐ AMENDED REPORT

|               |  |           |                    |
|---------------|--|-----------|--------------------|
| API Number    |  | Pool Code | Pool Name          |
| Property Code | Property Name<br>LONG DRAW "9 0"       |           | Well Number<br>1   |
| OGRID No.     | Operator Name<br>MEWBOURNE OIL COMPANY |           | Elevation<br>3456' |

**Surface Location**

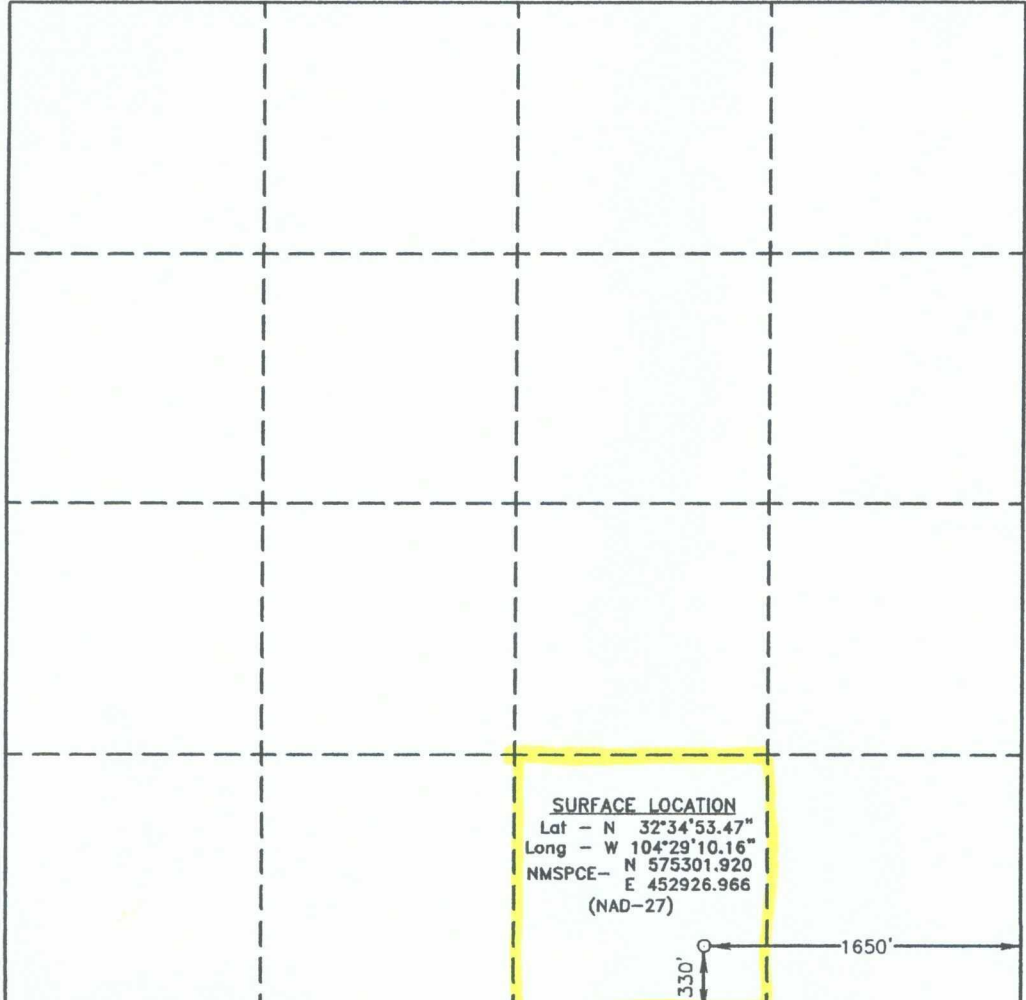
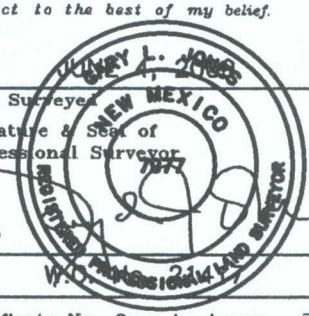
|               |         |          |       |         |               |                  |               |                |        |
|---------------|---------|----------|-------|---------|---------------|------------------|---------------|----------------|--------|
| UL or lot No. | Section | Township | Range | Lot Idn | Feet from the | North/South line | Feet from the | East/West line | County |
| 0             | 9       | 20 S     | 25 E  |         | 330           | SOUTH            | 1650          | EAST           | EDDY   |

**Bottom Hole Location If Different From Surface**

|               |         |          |       |         |               |                  |               |                |        |
|---------------|---------|----------|-------|---------|---------------|------------------|---------------|----------------|--------|
| UL or lot No. | Section | Township | Range | Lot Idn | Feet from the | North/South line | Feet from the | East/West line | County |
|               |         |          |       |         |               |                  |               |                |        |

|                 |                 |                    |           |
|-----------------|-----------------|--------------------|-----------|
| Dedicated Acres | Joint or Infill | Consolidation Code | Order No. |
|                 |                 |                    |           |

NO ALLOWABLE WILL BE ASSIGNED TO THIS COMPLETION UNTIL ALL INTERESTS HAVE BEEN CONSOLIDATED  
OR A NON-STANDARD UNIT HAS BEEN APPROVED BY THE DIVISION

|   |  |
|---|--|
|  | <b>OPERATOR CERTIFICATION</b><br><br><i>I hereby certify that the information contained herein is true and complete to the best of my knowledge and belief, and that this organization either owns a working interest or unleased mineral interest in the land including the proposed bottom hole location pursuant to a contract with an owner of such a mineral or working interest, or to a voluntary pooling agreement or a compulsory pooling order heretofore entered by the division.</i><br><br>Signature _____ Date _____<br><br>Printed Name _____ |
|   | <b>SURVEYOR CERTIFICATION</b><br><br><i>I hereby certify that the well location shown on this plat was plotted from field notes of actual surveys made by me or under my supervision, and that the same is true and correct to the best of my belief.</i><br><br>Date Surveyed _____<br>Signature & Seal of Professional Surveyor _____<br>   |
|   | Certificate No. Gary L. Jones 7977   |
|   | <b>Basin Surveys</b>   |

DISTRICT I  
1625 N. French Dr., Hobbs, NM 88240  
DISTRICT II  
1301 W. Grand Avenue, Artesia, NM 88210

DISTRICT III  
1000 Rio Brazos Rd., Aztec, NM 87410

DISTRICT IV  
1220 S. St. Francis Dr., Santa Fe, NM 87505

State of New Mexico  
Energy, Minerals and Natural Resources Department

Form C-102  
Revised October 12, 2005

Submit to Appropriate District Office  
State Lease - 4 Copies  
Fee Lease - 3 Copies

OIL CONSERVATION DIVISION  
1220 South St. Francis Dr.  
Santa Fe, New Mexico 87505

WELL LOCATION AND ACREAGE DEDICATION PLAT

☐ AMENDED REPORT

|               |  |                    |
|---------------|--|--------------------|
| API Number    | Pool Code                              | Pool Name          |
| Property Code | Property Name<br>LONG DRAW "9" I       | Well Number<br>1   |
| OGRID No.     | Operator Name<br>MEWBOURNE OIL COMPANY | Elevation<br>3446' |

Surface Location

|               |         |          |       |         |               |                  |               |                |        |
|---------------|---------|----------|-------|---------|---------------|------------------|---------------|----------------|--------|
| UL or lot No. | Section | Township | Range | Lot Idn | Feet from the | North/South line | Feet from the | East/West line | County |
| 1             | 9       | 20 S     | 25 E  |         | 2310          | SOUTH            | 330           | EAST           | EDDY   |

Bottom Hole Location If Different From Surface

|               |         |          |       |         |               |                  |               |                |        |
|---------------|---------|----------|-------|---------|---------------|------------------|---------------|----------------|--------|
| UL or lot No. | Section | Township | Range | Lot Idn | Feet from the | North/South line | Feet from the | East/West line | County |
|               |         |          |       |         |               |                  |               |                |        |

|                 |                 |                    |           |
|-----------------|-----------------|--------------------|-----------|
| Dedicated Acres | Joint or Infill | Consolidation Code | Order No. |
|                 |                 |                    |           |

NO ALLOWABLE WILL BE ASSIGNED TO THIS COMPLETION UNTIL ALL INTERESTS HAVE BEEN CONSOLIDATED  
OR A NON-STANDARD UNIT HAS BEEN APPROVED BY THE DIVISION

|  |  |
|--|--|
| <div><p><b>SURFACE LOCATION</b><br/>Lat - N 32°35'12.87"<br/>Long - W 104°28'54.67"<br/>NMSPCE- N 577261.255<br/>E 454255.077<br/>(NAD-27)</p></div> | <p><b>OPERATOR CERTIFICATION</b></p> <p>I hereby certify that the information contained herein is true and complete to the best of my knowledge and belief, and that this organization either owns a working interest or unleased mineral interest in the land including the proposed bottom hole location pursuant to a contract with an owner of such a mineral or working interest, or to a voluntary pooling agreement or a compulsory pooling order heretofore entered by the division.</p> <p>Signature _____ Date _____</p> <p>Printed Name _____</p> <p><b>SURVEYOR CERTIFICATION</b></p> <p>I hereby certify that the well location shown on this plat was plotted from field notes of actual surveys made by me or under my supervision, and that the same is true and correct to the best of my belief.</p> <p>SEPTEMBER 2009</p> <p>Date Surveyed _____</p> <p>Signature of Professional Surveyor _____</p> <p>7977</p> <p>Certificate No. Gary L. Jones 7977</p> <p>BASIN SURVEYS</p> |
|--|--|

10-27-2009

**WI and RI Ownership  
Section 9, T20S, R25E  
Eddy County, New Mexico**

*\* This plat is based on the assumption that all parties participate in the proposed wells.*

|  |  |   |
|--|--|---|
| <p><u><b>Federal Lease<br/>NMNM-14758</b></u></p> <p>D C</p> <p><b>WI and RI<br/>is Common</b></p> <p>(1 Battery)</p> <p>e</p> <p><u><b>Federal Lease<br/>NMNM-114958</b></u></p> <p><b>WI and RI<br/>is Common</b></p> <p>F</p> <p><b>(1 Battery)</b></p> | <p><u><b>Federal Lease<br/>NMNM-14758</b></u></p> <p>B</p> <p><b>WI and RI<br/>is Common</b></p> <p>(1 Battery)</p> <p>6</p> | <p><u><b>Federal Lease<br/>NMNM-14758</b></u></p> <p><b>WI and RI<br/>is Common</b></p> <p>A</p> <p><b>(1 Battery)</b></p> <p>H</p> |
| <p><u><b>Fee Leases</b></u></p> <p>L k</p> <p><b>WI and RI<br/>is Common</b></p> <p><u><b>Fee Leases</b></u></p> <p><b>WI and RI<br/>is Common</b></p> <p>M</p> <p><b>(1 Battery)</b></p> <p>N</p>   | <p><u><b>Fee Leases</b></u></p> <p>3</p> <p><b>WI and RI<br/>is Common</b></p> <p>(1 Battery)</p> <p>o</p>                   | <p><u><b>Fee Leases</b></u></p> <p><b>WI and RI<br/>is Common</b></p> <p>I</p> <p><b>(1 Battery)</b></p> <p>p</p>                   |

## **OWNERSHIP LIST**

### **NE/4SE/4 (Long Draw 9 I #1)**

#### **WI Owners:**

- |   |                                      |
|---|--------------------------------------|
| 1) Mewbourne Oil Company<br>P.O. Box 7698<br>Tyler, Texas 75711   | 30.05357145%                         |
| 2) Devon Energy Production Company, LP<br>20 North Broadway, Ste. 1500<br>Oklahoma City, Oklahoma 73102<br>Attn: Mr. Ken Gray | 30.05357145%                         |
| 3) Kaiser-Francis Oil Company<br>P.O. Box 21468<br>Tulsa, Oklahoma 74121-1468<br>Attn: Mr. Wayne Fields                       | 21.14285710%                         |
| 4) Merit Energy Company<br>13727 Noel Road, Ste. 500<br>Dallas, Texas 75240<br>Attn: Ms. Erin Wonderly                        | <u>18.75000000%</u><br>100.00000000% |

#### **Royalty Owners:**

- |   |           |
|---|-----------|
| 1) Chrystine Anderson Willard<br>c/o Steve Willard<br>P.O. Box 1174<br>Artesia, NM 88211-1174   | 9.375000% |
| 2) Catherine Anne Connolly<br>c/o Jean Galloway Ball PLC<br>Attn: Cecilia Galloway-Sheil<br>10306 Eaton Place, Ste. 130<br>Fairfax, Virginia 22030-2201 | 2.343750% |
| 3) Robert L. and Sharon K. Aho<br>2941 West Rome Avenue<br>Anaheim, CA 92804-3942   | 1.171875% |
| 4) Janet M. Hanley<br>5422 Beaver Lodge Drive<br>Kingwood, Texas 77345  | 1.171875% |
| 5) HF Investments, LLC<br>3018 South high Street<br>Denver, CO 80210  | 0.781250% |



|   |  |
|---|--|
| 6) Connie Connelly<br>1014 Whispering Oak Court<br>Arlington, Texas 76012-2803  | 0.781250%                              |
| 7) William J. Duncan<br>1414 Crownhill Drive<br>Arlington, Texas 76012  | 0.781250%                              |
| 8) Tarleton A. Woodson, aka T.A.<br>Woodson and Sherrill M. Woodson,<br>Trustees of the Tarleton A. Woodson,<br>aka T.A. Woodson and Sherrill M. Woodson<br>Revocable Trust created May 6, 1998<br>P.O. Box 195<br>Acton, CA 93510-0195 | 0.585938%                              |
| 9) David R. Woodson and Loretta A. Woodson,<br>Trustees of the David R. Woodson and Loretta<br>M. Woodson Living Trust dated 1-4-1999<br>20313 NE 89 <sup>th</sup> Avenue<br>Battleground, WA 98604                                     | 0.585938%                              |
| 10) William S. Woodson and Linda Kay Woodson,<br>Trustees of the William S. Woodson and Linda<br>Kay Woodson Trust dated 12-17-1999<br>211 Dunes Street<br>Morro Bay, CA 93442  | 0.585937%                              |
| 11) Thomas C. Woodson and Linda Kay Woodson<br>P.O. Box 120757<br>Arlington, Texas 76012  | <u>0.585937%</u><br><b>100.000000%</b> |

**Overriding Royalty Owners:**

1) None

## **OWNERSHIP LIST**

### **S/2SE/4 (Long Draw 9 O #1 and Long Draw 9 P #1)**

#### **WI Owners:**

- |   |   |
|---|---|
| 1) Mewbourne Oil Company<br>P.O. Box 7698<br>Tyler, Texas 75711   | 30.05357145%                                |
| 2) Devon Energy Production Company, LP<br>20 North Broadway, Ste. 1500<br>Oklahoma City, Oklahoma 73102<br>Attn: Mr. Ken Gray | 30.05357145%                                |
| 3) Kaiser-Francis Oil Company<br>P.O. Box 21468<br>Tulsa, Oklahoma 74121-1468<br>Attn: Mr. Wayne Fields                       | 21.14285710%                                |
| 4) Merit Energy Company<br>13727 Noel Road, Ste. 500<br>Dallas, Texas 75240<br>Attn: Ms. Erin Wonderly                        | <u>18.75000000%</u><br><b>100.00000000%</b> |

#### **Royalty Owners:**

- |  |           |
|--|-----------|
| 1) Michael San Miguel<br>4020 Vendome Place<br>New Orleans, LA 70125           | 2.148438% |
| 2) Marshal San Miguel<br>1510 Heritage Oaks Way<br>Knoxville, TN 37923-6852    | 2.148437% |
| 3) Tierra Oil Company, LLC<br>P.O. Box 700968<br>San Antonio, Texas 78270-0968 | 2.013938% |
| 4) Robert H. Tweedy, III<br>1508 Woodland Street NE<br>Decatur, AL 35601-5020  | 1.289063% |
| 5) Carmex, Inc.<br>P.O. Box 1718<br>Carlsbad, NM 88221-1718                    | 0.694375% |
| 6) Robert T. McWhorter, Jr.<br>303 Cain Street NE, Ste. A<br>Decatur, AL 35601 | 0.429688% |

|   |           |
|---|-----------|
| 7) Roger B. McWhorter<br>215 Grant Street SE<br>Decatur, AL 35601   | 0.429688% |
| 8) William H. Hudson, Jr.<br>P.O. Box N<br>Courtland, AL 35618-0794   | 0.429688% |
| 9) Vincent D. Hudson<br>5333 Rio Vista Street<br>Sarasota, FL 34232   | 0.429687% |
| 10) Alice A. Dupes<br>2015 Stratford Road SE<br>Decatur, AL 35601   | 0.429688% |
| 11) Evelyn Bond Gaudin, Paul A. Nalty<br>and John P. Cavaroc<br>400 Magazine Street, Ste. 300<br>New Orleans, LA 70130-2437 | 0.260417% |
| 12) Harold N. Lovvorn, Jr.<br>1011 Belle Meade Boulevard<br>Nashville, TN 37205-4503  | 0.208344% |
| 13) Winston Garth Lovvorn<br>301 E. Washington Street<br>Athens, AL 35611-2653  | 0.208343% |
| 14) Katherine Stuart Terry<br>5308 7 <sup>th</sup> Avenue South<br>Birmingham, AL 35212                                     | 0.143229% |
| 15) Virginia Garth Terry<br>5308 7 <sup>th</sup> Avenue South<br>Birmingham, AL 35212                                       | 0.143229% |
| 16) Ellen Wayles Terry<br>5308 7 <sup>th</sup> Avenue South<br>Birmingham, AL 35212   | 0.143229% |
| 17) Linda A. Bell<br>P.O. Box 1027<br>Castle Rock, CO 80104-1027  | 0.130208% |
| 18) Virginia R. Fort<br>4312 S. 31 <sup>st</sup> Street, Apt. #42<br>Temple, Texas 76502                                    | 0.130208% |
| 19) Jackson G. Hitchcock, Jr.<br>29 Donald Drive  | 0.107422% |

Pittsboro, NC 27312

|  |                                       |
|--|---------------------------------------|
| 20) Amanda Suttle Hitchcock<br>4107 12 <sup>th</sup> Street NE<br>Washington, DC 20017 | 0.080566%                             |
| 21) Diane Hitchcock<br>3645 Fraternity Church Road<br>Winston-Salem, NC 27127-8775     | 0.080566%                             |
| 22) Jason Hitchcock<br>1315 Clarendon Street, Apt. A<br>Durham, NC 27705               | 0.080566%                             |
| 23) Laura Hitchcock Workman<br>2607 Pageland Hwy.<br>Monroe, NC 28112                  | 0.080566%                             |
| 24) Jeffrey Caswell Neal<br>1311 Doepp Drive<br>Carlsbad, NM 88220                     | 0.075955%                             |
| 25) Judith Gene Hanttula<br>704 Riverside Drive<br>Carlsbad, NM 88220                  | 0.075955%                             |
| 26) Janet Elizabeth Vogt<br>13404 Piedra Grande Place NE<br>Albuquerque, NM 87111      | 0.075955%                             |
| 27) Mary Gene Bloomquist<br>P.O. Box 716<br>Castle Rock, CO 80104-0716                 | <u>0.032552%</u><br><b>12.500000%</b> |

**Overriding Royalty Owners:**

|   |                                  |
|---|----------------------------------|
| 1) Kirby Minerals<br>P.O. Box 268947<br>Oklahoma City, OK 73125                   | 5.6250%                          |
| 2) Jayhawk Oil & gas Corporation<br>4319 Valley Drive<br>Midland, Texas 79707     | 0.7500%                          |
| 3) Gene F. Lang & Co.<br>6995 S. Chapparal Circle W.<br>Centennial, CO 80016-2109 | 0.3125%                          |
| 4) David T. Holt<br>P.O. Box 680997<br>Franklin, TN 37068-0997                    | <u>0.3125%</u><br><b>7.0000%</b> |



# MEWBOURNE OIL COMPANY

500 W. TEXAS, SUITE 1020  
MIDLAND, TEXAS 79701

(432) 682-3715  
FAX (432) 685-4170

June 24, 2010

Certified Mail-Return Receipt No. 2227

David T. Holt  
P.O. Box 680997  
Franklin, TN 37068-0997

*This same letter sent to all  
involved parties. If needed I can  
send all forty something copies.*

Re: Surface Commingling  
Long Draw "9" I No. 1  
2310' FSL & 330' FEL  
Section 9, T20S, R25E  
Eddy County, New Mexico

Long Draw "9" P No. 1  
410' FSL & 330' FEL  
Section 9, T20S, R25E  
Eddy County, New Mexico

Long Draw "9" O No. 1  
330' FSL & 1650' FEL  
Section 9, T20S, R25E  
Eddy County, New Mexico

Gentlemen:

Mewbourne Oil Company has filed an application with the New Mexico Oil Conservation Division seeking authorization to surface commingle production from the Cemetery Yeso Pool originating from the Long Draw 9 I #1, Long Draw 9 O #1 and the Long Draw 9 P #1 wells located on Fee Leases, which comprise the S/2SE/4, NE/4SE/4 of Section 9, T20S, R25E, Eddy County, New Mexico. All production from these wells is to be stored in the Long Draw "9" O Tank Battery, located in the SW/4SE/4 of Section 9. Production will still be metered separately for each well on a daily basis. The reason for doing this is to save approximately \$150,000.00 in oil production facilities. If you object to the application, you must notify the Division in writing no later than 20 days from the date of this letter (the Division's address is 1220 South St. Francis Drive, Santa Fe, New Mexico 87505). Failure to object will preclude you from contesting this matter later.

Should you have any questions regarding the above, please email me at [cmitchell@mewbourne.com](mailto:cmitchell@mewbourne.com) or call me at (432) 682-3715.

Sincerely,

MEWBOURNE OIL COMPANY

*Corey Mitchell*

Corey Mitchell  
Landman

## Ezeanyim, Richard, EMNRD

---

**From:** rterrell@mewbourne.com  
**Sent:** Wednesday, June 30, 2010 10:04 AM  
**To:** Ezeanyim, Richard, EMNRD  
**Cc:** rterrell@mewbourne.com  
**Subject:** Production rates

Richard

Long Draw 9 P # 1 Well put to sales on May 6, 2010. Perfs @ 2516-2812.  
June 1st -29th production was 2712 BO, 2638 BW, 2495 MCF.

Long Draw 9 O # 1 Well put to sales on November 18, 2009. Perfs @ 2487-2803. June 1st -29th  
production was 510 BO, 648 BW, 607 MCF.

If more information is needed please call me.

Thanks

RT