

District I
1625 N. French Dr., Hobbs, NM 88240
District II
1301 W. Grand Avenue, Artesia, NM 88210
District III
1000 Rio Brazos Road, Aztec, NM 87410
District IV
1220 S. St. Francis Dr., Santa Fe, NM 87505

State of New Mexico
Energy Minerals and Natural Resources
Oil Conservation Division
1220 South St. Francis Dr.
Santa Fe, NM 87505

RECEIVED

JUL 22 2010

HOBBSOCD

Form C-141
Revised October 10, 2003

Submit 2 Copies to appropriate
District Office in accordance
with Rule 116 on back
side of form

Release Notification and Corrective Action

FINAL

OPERATOR

☐ Initial Report ☒ Final Report

Name of Company - Targa Midstream Services, L.P.	Contact - Cal Wrangham	
Address - P.O. Box 1909, Eunice, NM 88231	Telephone No. - 432.688.0542	
Facility Name - Eunice South Compressor Station	Facility Type - Gas Compressor Station	
Surface Owner - Versado Gas Processors, LLC	Mineral Owner	Lease No.

LOCATION OF RELEASE

Unit Letter	Section	Township	Range	Feet from the	North/South Line	Feet from the	East/West Line	County
M	27	22 South	37 East					Lea

Latitude N 32.362832° Longitude W-103.159165°

NATURE OF RELEASE

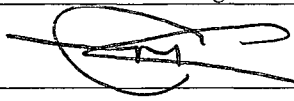
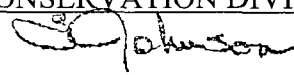
Type of Release - produced water and condensate	Volume of Release - unknown	Volume Recovered - N/A
Source of Release - floor drain from #30 and #31 compressor buildings	Date and Hour of Occurrence April 21, 2009	Date and Hour of Discovery April 21, 2009
Was Immediate Notice Given? <input type="checkbox"/> Yes <input checked="" type="checkbox"/> No <input type="checkbox"/> Not Required	If YES, To Whom? Discovered during OCD Inspection	
By Whom? Mr. Leonard Lowe	Date and Hour April 21, 2009	
Was a Watercourse Reached? <input type="checkbox"/> Yes <input checked="" type="checkbox"/> No	If YES, Volume Impacting the Watercourse. Not Applicable	

If a Watercourse was Impacted, Describe Fully.*
Not Applicable

Describe Cause of Problem and Remedial Action Taken.*☐ Release most likely from sumps accepting liquid via floor drain lines leading from the compressor buildings #30 and #31, to two 620-gallon capacity below-grade tanks (sumps) associated with each compressor. Floor drains are disconnected from the tanks to prevent additional release(s). The main sump, which meets standards of NMAC 19.15.17 will replace Engine #30 and Engine #31 sumps.

Describe Area Affected and Cleanup Action Taken.*
Sumps were removed and replaced by a single below-grade tank meeting standards of NMAC 19.15.17. Impacted soil was hand excavated to the extent possible with consideration for foundations and employee safety. Final bottom samples (5-part composite) were below regulatory level of 1,000 mg/Kg for TPH by method SW-8015 (DRO and GRO) and chloride action level of 250 mg/Kg. On May 25, 2010, OCD granted approval close by July 26, 2010.

I hereby certify that the information given above is true and complete to the best of my knowledge and understand that pursuant to NMOCD rules and regulations all operators are required to report and/or file certain release notifications and perform corrective actions for releases which may endanger public health or the environment. The acceptance of a C-141 report by the NMOCD marked as "Final Report" does not relieve the operator of liability should their operations have failed to adequately investigate and remediate contamination that pose a threat to ground water, surface water, human health or the environment. In addition, NMOCD acceptance of a C-141 report does not relieve the operator of responsibility for compliance with any other federal, state, or local laws and/or regulations.

Signature: 	OIL CONSERVATION DIVISION	
Printed Name: Mark J. Larson, Consultant	Approved by District Supervisor  ENVIRONMENTAL ENGINEER	
Title: Sr. Project Manager, Larson & Associates, Inc.	Approval Date: 7.22.10	Expiration Date: —
E-mail Address: mark@laenvironmental.com	Conditions of Approval:	
Date: July 21, 2010 Phone: (432) 687-0901	Attached <input type="checkbox"/> IRP# 2544	

* Attach Additional Sheets If Necessary

District I
1625 N. French Dr., Hobbs, NM 88240
District II
1301 W. Grand Avenue, Artesia, NM 88210
District III
1000 Rio Brazos Road, Aztec, NM 87410
District IV
1220 S. St. Francis Dr., Santa Fe, NM 87505

State of New Mexico
Energy Minerals and Natural Resources
Oil Conservation Division
1220 South St. Francis Dr.
Santa Fe, NM 87505

RECEIVED

MAY 25 2010

HOBBSOCD

Form C-141
Revised October 10, 2003

Submit 2 Copies to appropriate
District Office in accordance
with Rule 116 on back
side of form

Release Notification and Corrective Action

OPERATOR

☐ Initial Report ☒ Final Report

Name of Company - Targa Midstream Services, L.P.	Contact - Cal Wrangham	
Address - P.O. Box 1909, Eunice, NM 88231	Telephone No. - 432 688.0542	
Facility Name - Eunice South Compressor Station	Facility Type - Gas Compressor Station	
Surface Owner - Versado Gas Processors, LLC	Mineral Owner	Lease No

LOCATION OF RELEASE

Unit Letter	Section	Township	Range	Feet from the	North/South Line	Feet from the	East/West Line	County
M	27	22 South	37 East					Lea

Latitude N 32 362832° Longitude W-103.159165°

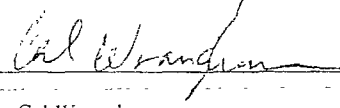
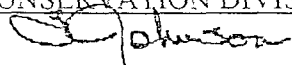
NATURE OF RELEASE

Type of Release - produced water and condensate	Volume of Release - unknown	Volume Recovered - N/A
Source of Release - floor drain from #30 and #31 compressor buildings	Date and Hour of Occurrence April 21, 2009	Date and Hour of Discovery April 21, 2009
Was Immediate Notice Given? <input type="checkbox"/> Yes <input checked="" type="checkbox"/> No <input type="checkbox"/> Not Required	If YES, To Whom? Discovered soil surface staining during OCD Inspection	
By Whom? Mr. Leonard Lowe	Date and Hour April 21, 2009	
Was a Watercourse Reached? <input type="checkbox"/> Yes <input checked="" type="checkbox"/> No	If YES, Volume Impacting the Watercourse Not Applicable	
If a Watercourse was Impacted, Describe Fully.* Not Applicable		

Describe Cause of Problem and Remedial Action Taken.*... Discovered soil surface staining. Release most likely from sumps accepting liquid via floor drain lines leading from the compressor buildings #30 and #31, to two 620-gallon capacity, below-grade tanks (sumps) associated with each compressor. Floor drains are disconnected from the tanks to prevent additional releases(s). The main sump, which meets standards of NMOC 19 15 17 will replace Engine #30 and Engine #31 sumps.

Describe Area Affected and Cleanup Action Taken *
Sumps were removed and replaced by a single below-grade tank meeting standards of NMOC 19.15.17. Impacted soil was hand excavated to the extent possible with consideration for foundations and employee safety. Final bottom samples (5-part composite) were below regulatory level of 1,000 mg/Kg for TPH by method SW-8015 (DRO and GRO) and chloride action level of 250 mg/Kg.

I hereby certify that the information given above is true and complete to the best of my knowledge and understand that pursuant to NMOC rules and regulations all operators are required to report and/or file certain release notifications and perform corrective actions for releases which may endanger public health or the environment. The acceptance of a C-141 report by the NMOC marked as "Final Report" does not relieve the operator of liability should their operations have failed to adequately investigate and remediate contamination that pose a threat to ground water, surface water, human health or the environment. In addition, NMOC acceptance of a C-141 report does not relieve the operator of responsibility for compliance with any other federal, state, or local laws and/or regulations.

Signature: 	OIL CONSERVATION DIVISION	
Printed Name: Cal Wrangham	Approved by District Supervisor 	
Title: Environmental, Safety and Health Manager	Approval Date: 5.25.10	Expiration Date: 7.26.10
E-mail Address: cwrangham@targaresources.com	Conditions of Approval:	Attached <input type="checkbox"/>
Date: May 24, 2010 Phone: (432) 688-0542	SUBMIT FINAL/CLOSURE C-141 1RP# 10.5.2544	

Attach Additional Sheets If Necessary

w/DOCS

Table 1
Targa Midstream
Soil Analytical Data Summary
South Compressor Station
Lea County, New Mexico

Sample ID	Depth	Date	Benzene	Toluene	Ethylbenzene	Total Xylenes	Total BTEX
New Mexico Regulatory Limit			10	---	---	---	50
Engine 30 (South)	Bottom	1/6/2010	<0.0229	<0.0458	2.393	0.9177	3.311
	SS-1	1/6/2010	2.010	9.806	239.6	52.26	303.7
Engine 31 (North)	Bottom	1/6/2010	0.0013	0.0032	0.0061	0.0194	0.0300
	NS-1	1/6/2010	<0.0012	<0.0024	<0.0012	<0.0012	<0.0012
	NS-2	1/6/2010	0.0074	0.0070	0.0904	0.3135	0.4183
	NS-3	1/6/2010	<0.0011	<0.0022	<0.0011	<0.0011	<0.0011
	NS-4	1/6/2010	<0.0011	<0.0022	<0.0011	<0.0011	<0.0011
	NS-5	1/6/2010	<0.0227	6.522	2.965	15.194	24.681
	NS-6	1/6/2010	<0.0011	<0.0022	<0.0011	<0.0011	<0.0011

Notes

Benzene, Toluene, Ethylbenzene and Xylenes analyzed via EPA SW Method 8021B.

All values reported in Milligrams per Kilogram - dry (mg/Kg, parts per million).

Bold indicates the analyte was detected.

Bold and blue indicates the value exceeds NMOCD requirements.

ALL OVERAGES SITUATED
NEXT TO STRUCTURES.
TOO CLOSE TO REMOVE &
VOLUMES ARE INSIGNIFICANT -
[Signature]
ENVIRONMENTAL ENGINEER
5.25.10

RECEIVED

JUL 22 2010

HOBBSOCD

July 21, 2010

VIA EMAIL: Larry.Johnson@state.nm.us

Mr. Larry Johnson
Environmental Engineer
New Mexico Oil Conservation Division – District 1
1625 N. French Drive
Hobbs, New Mexico 88240

**Re: 1RP-10-5-2544 - Final Sump Closure Report
Targa Midstream Services, L.P., Eunice South Compressor Station (GW-344)
Unit M (SW/4, SW/4) Section 27, Township 22 South, Range 37 East
Lea County, New Mexico**

Dear Larry,

This letter is submitted to the New Mexico Oil Conservation Division (OCD) on behalf of Targa Midstream Services L.P. (Targa) by Larson & Associates, Inc. (LAI), its consultant, to present final closure documentation for two (2) sump excavations and a concrete containment at the Eunice South Compressor station (Site) located about 5 miles south of Eunice, in Lea County, New Mexico. The Site is situated in Unit M (SW/4, SW/4), Section 27, Township 22 South, Range 37 east, with geodetic position north 32.362832° and west 103.159165°. Figure 1 presents a location and topographic map. Figure 2 presents an aerial photograph. Figure 3 presents a Site drawing.

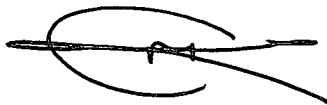
On May 14, 2009, the OCD Environmental Bureau in Santa Fe, New Mexico, issued Targa a letter that identified several deficiencies based on an inspection that was performed on April 21, 2009. Specifically, the OCD identified surface releases of fluid at two (2) concrete sumps located north of the Engine #30 and south of the Engine #31 compressor buildings and required Targa to remediate soil and identify sources for the releases. The OCD also requested Targa to remediate soil adjacent to the Engine #31 (north) compressor building that was contaminated by petroleum hydrocarbons from engine leaks that migrated along the concrete floor to the exterior of the building.

Between August and October 2009 Targa removed the sumps and LAI collected composite samples from the bottom of the excavations and a discreet sample from the south wall of the Engine #30 (south) excavation. On May 25, 2010, LAI submitted a report and closure plan to the OCD titled "*SUMP CLOSURE REPORT, Targa Midstream Services, L.P., Eunice South Compressor Station GW-344, Unit M (SW/4, SW/4), Section 27, T22S, R37E, Lea County, New Mexico, May 20, 2010*". The closure plan requested approval to fill the sump excavations and concrete containment with clean soil. On May 25, 2010, the OCD approved the plan to fill the excavations and containment with a final report to be submitted no later than July 26, 2010.

Mr. Larry Johnson
July 21, 2010
Page 2

Between June 11 and July 16, 2010, Targa filled the sump excavations with clean soil and collapsed the walls of the concrete containment inward to about 3 feet below ground before filling with clean soil. Appendix A presents photo documentation. Appendix B presents the initial C-141, approved C-141 for filling the sump excavations and concrete containment and final C-141. Your approval of this final closure report is requested. Please contact me if you have questions.
Sincerely

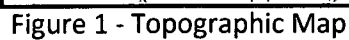
Larson & Associates, Inc.

A handwritten signature in black ink, appearing to read 'Mark J. Larson', with a horizontal line through the middle and a large loop on the left side.

Mark J. Larson
Certified Professional Geologist 10490
mark@laenvironmental.com

Enclosures

Cc: Cal Wrangham – Targa
James Lingnau - Targa



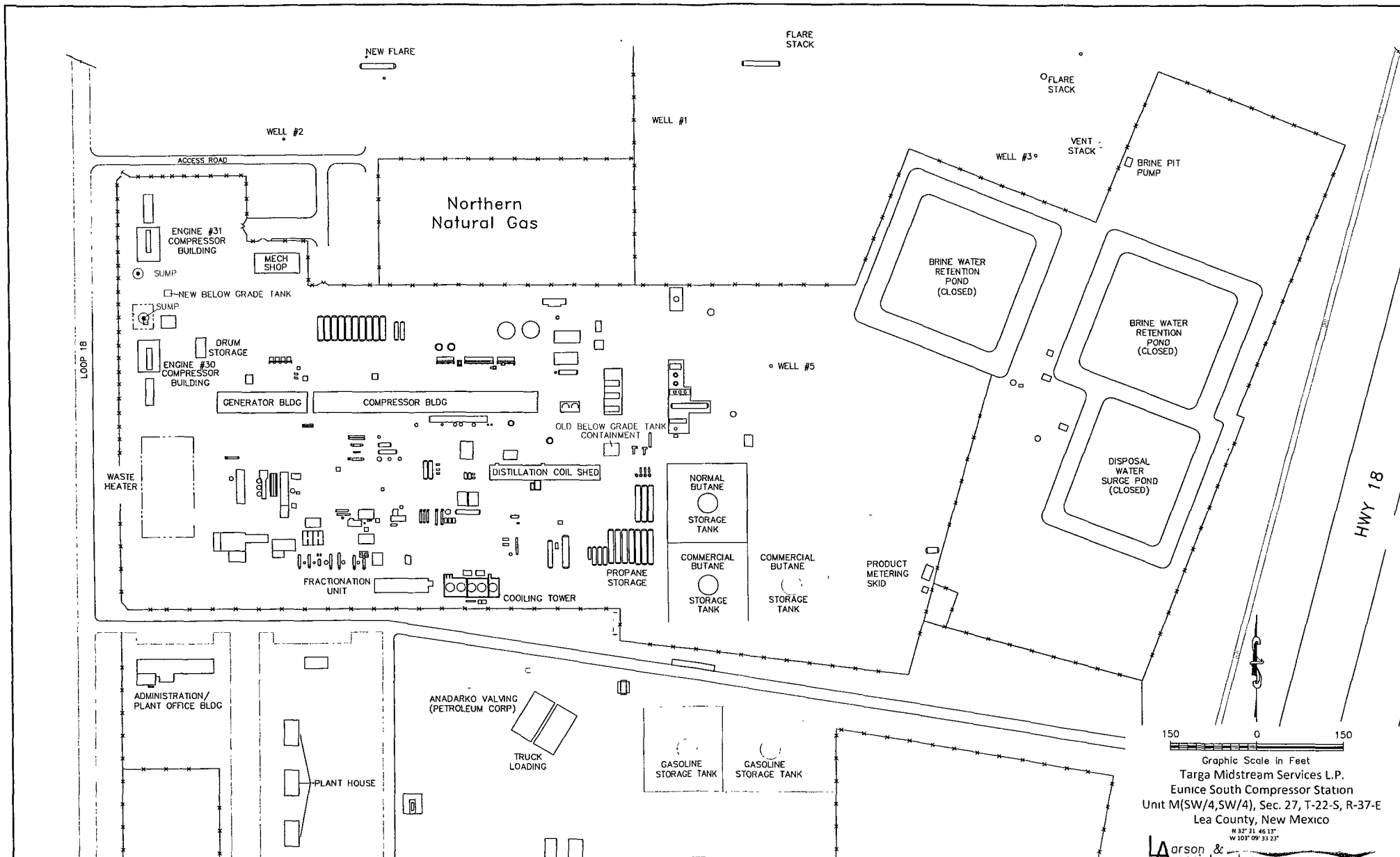
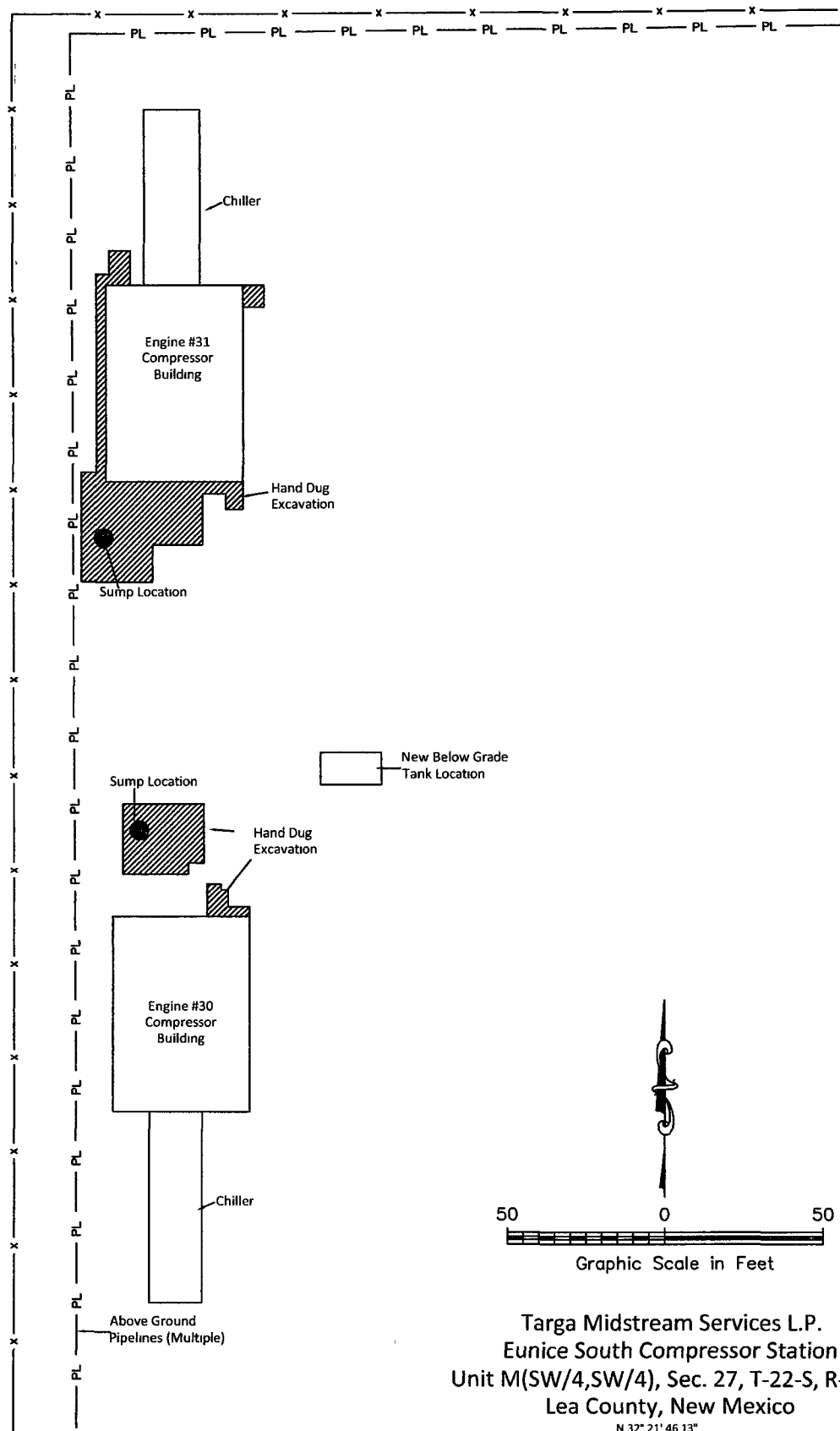


Figure 2 - Site Drawing

Laarson & Associates, Inc.
Environmental Consultants

JWW

Loop 18



Targa Midstream Services L.P.
 Eunice South Compressor Station
 Unit M(SW/4,SW/4), Sec. 27, T-22-S, R-37-E
 Lea County, New Mexico

N 32° 21' 46.13"
 W 103° 09' 33.23"

Figure 3 - Sump Location Drawing

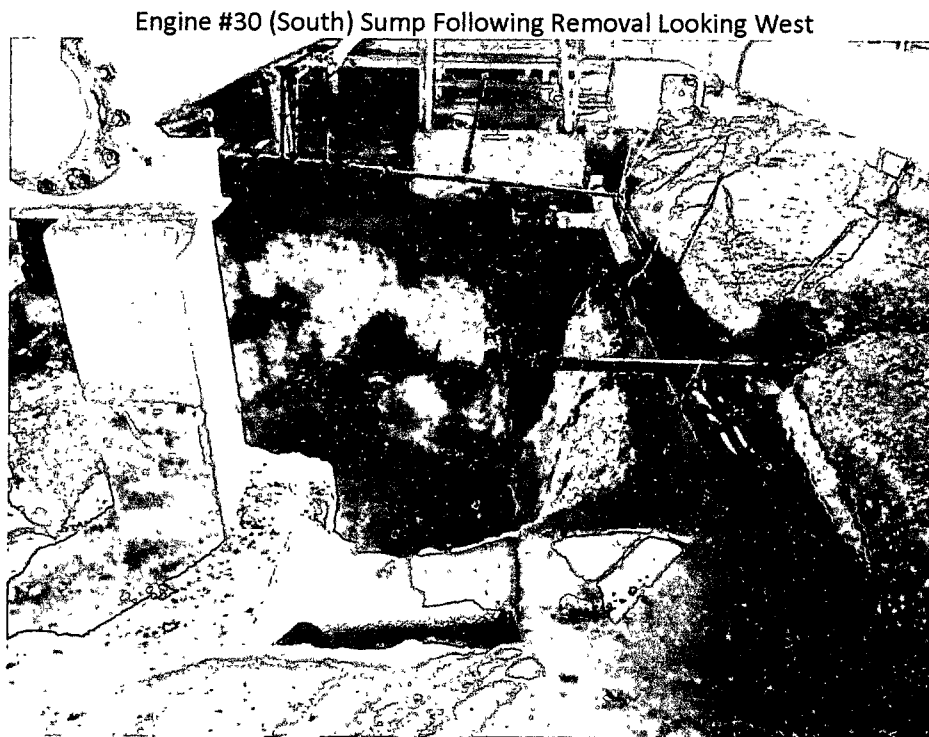
Appendix A

Photo Documentation

Engine #30 (South) Sump



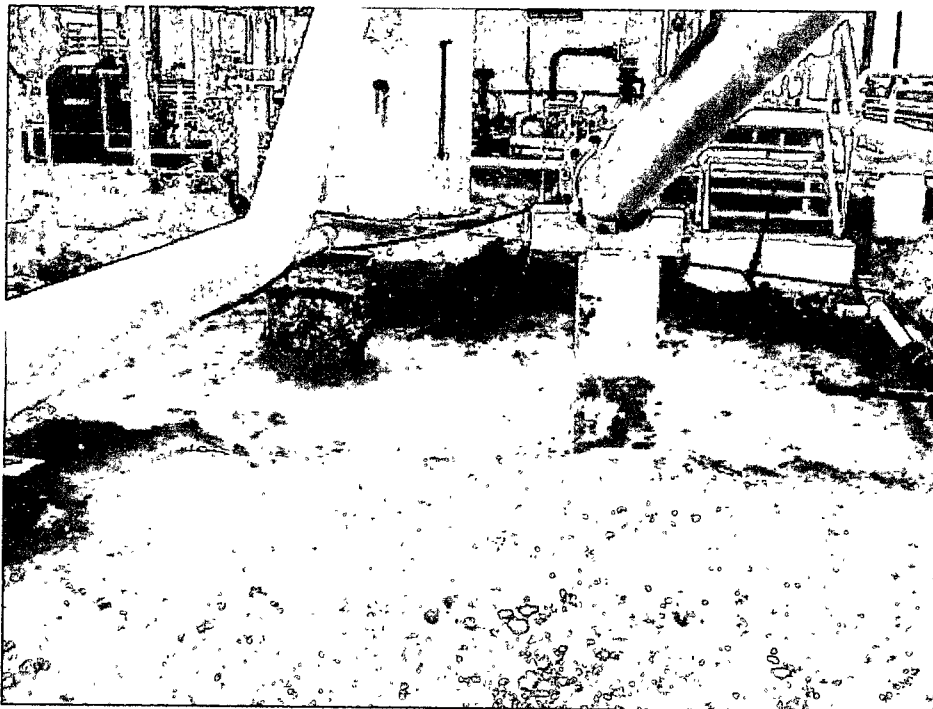
Engine #30 (South) Sump Prior to Removal Looking Southwest



Engine #30 (South) Sump Following Removal Looking South

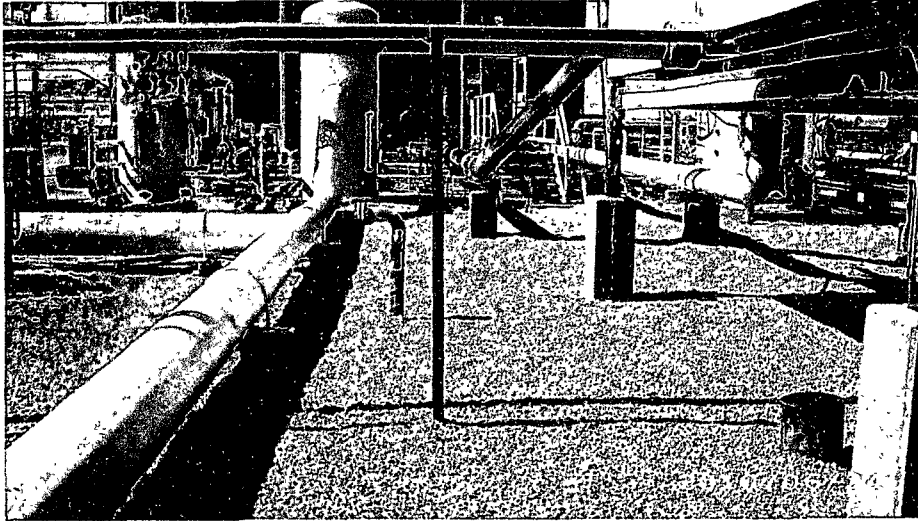


Engine #30 (South) Sump Soil Excavation Filling Looking South



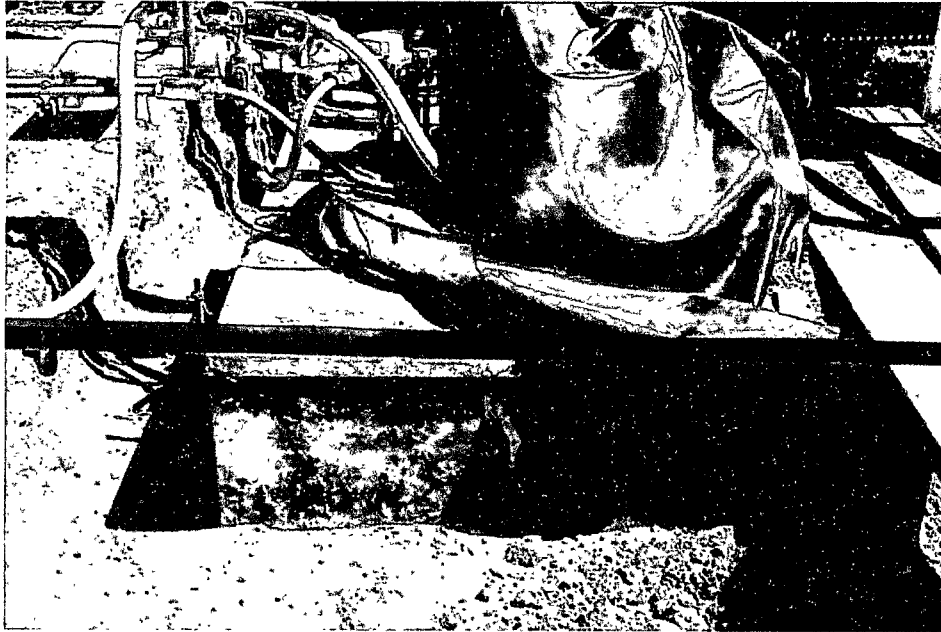
Engine #30 (South) Sump Soil Excavation Filling Looking South

Sump Closure Report
Eunice South Compressor Station (GW-344)
Targa Midstream Services, L.P.
Lea County, New Mexico

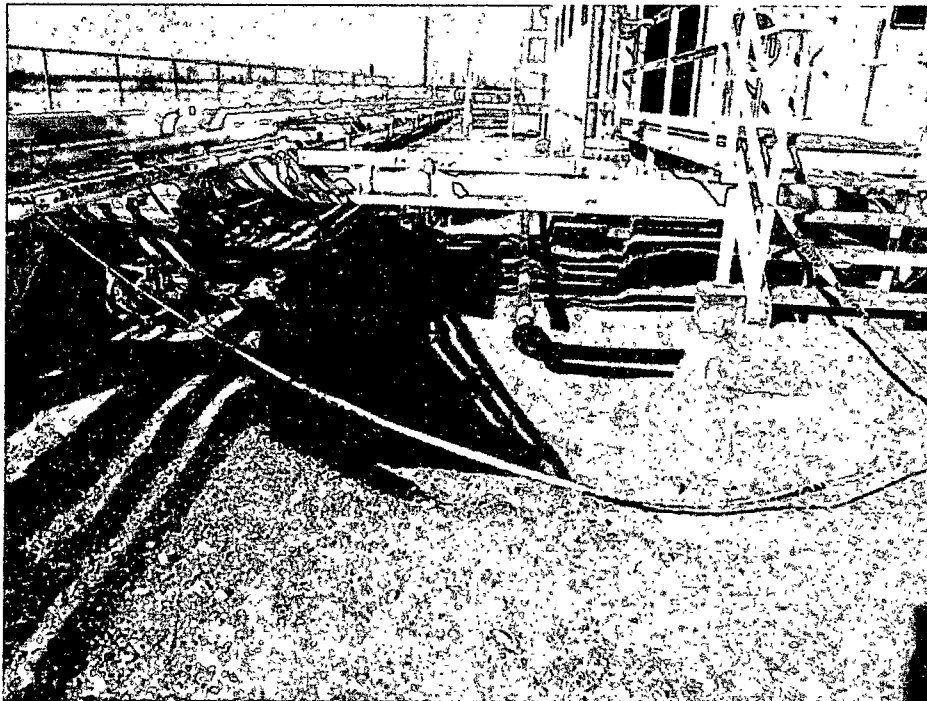


Engine #30 (South) Sump Soil Excavation Filling Looking South

Engine #31 (North) Sump



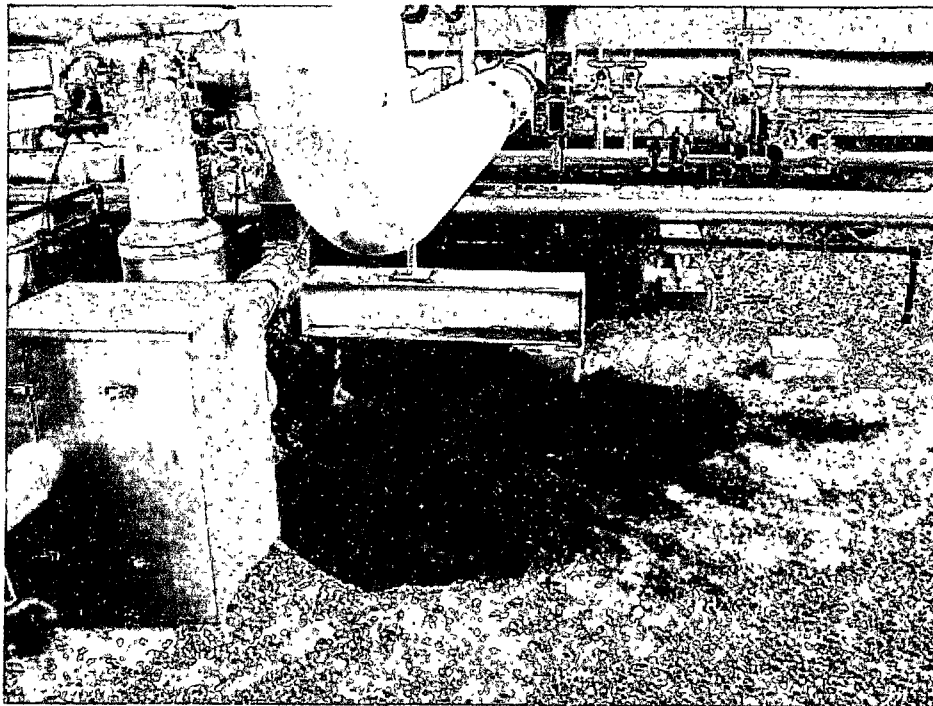
Engine #31 (North) Sump Prior to Removal Looking North



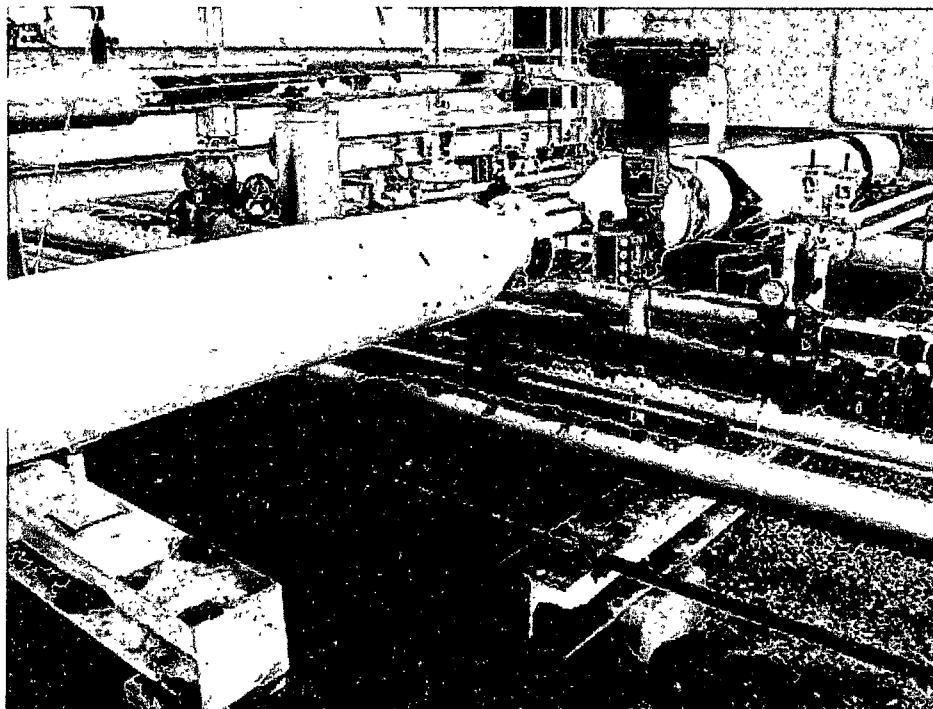
Engine #31 (North) Sump Following Removal Looking North



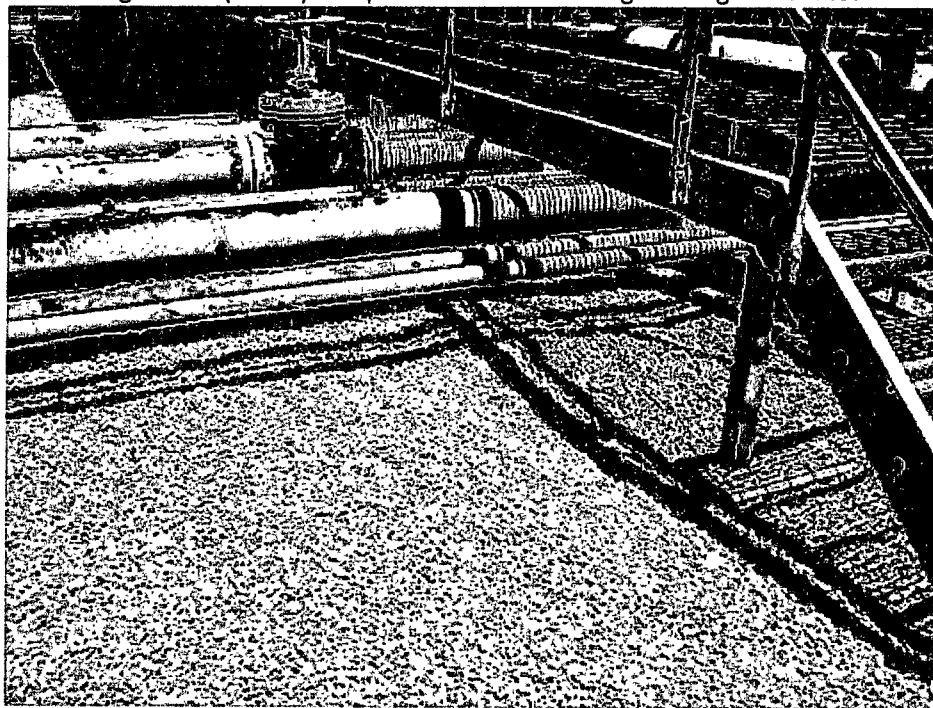
Engine #31 (North) Sump Following Removal and Soil Excavation Looking South



Engine #31 (North) Sump Soil Excavation Filling Looking North

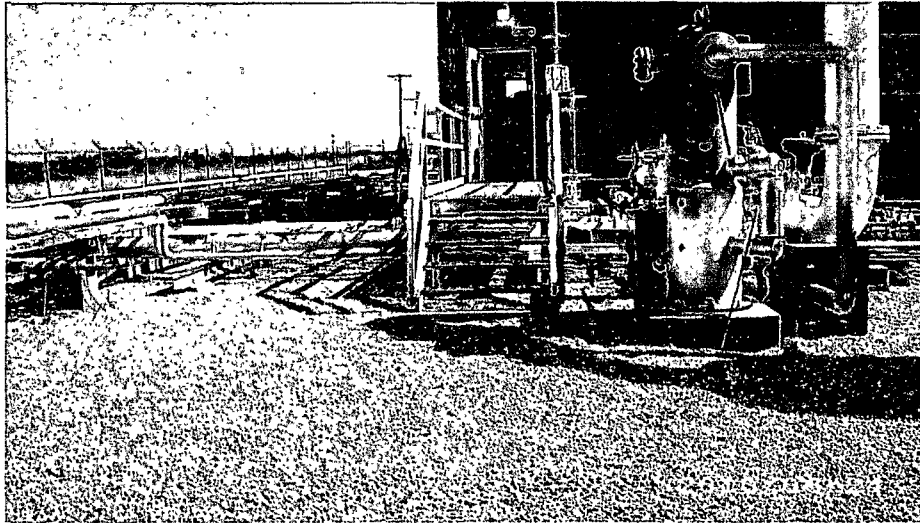


Engine #31 (North) Sump Soil Excavation Filling Looking Northwest



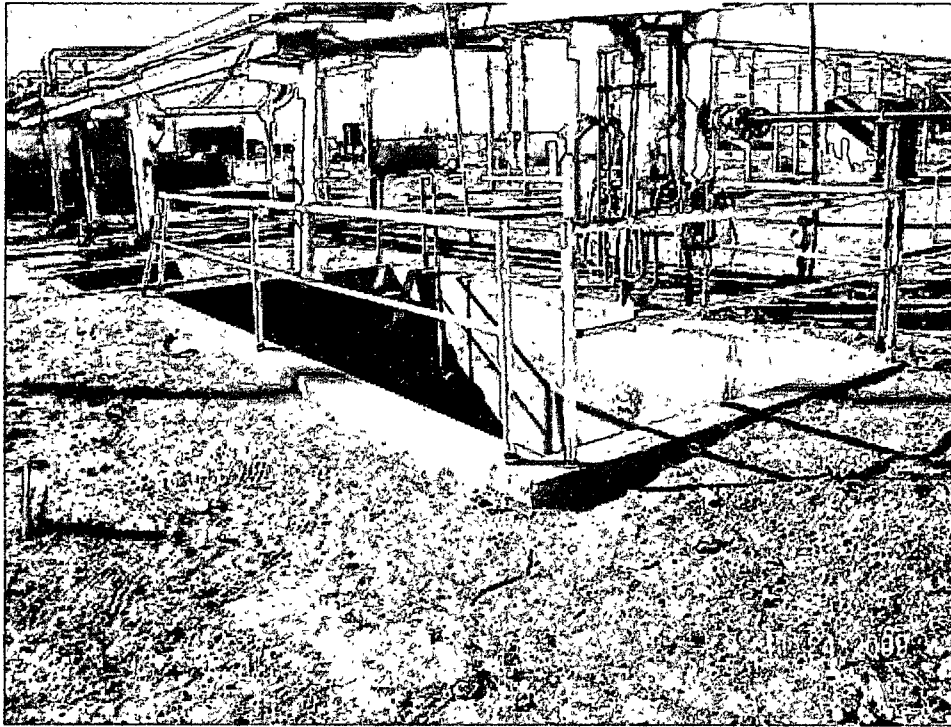
Engine #31 (North) Sump Soil Excavation Filling Looking Northeast

Sump Closure Report
Eunice South Compressor Station (GW-344)
Targa Midstream Services, L.P.
Lea County, New Mexico



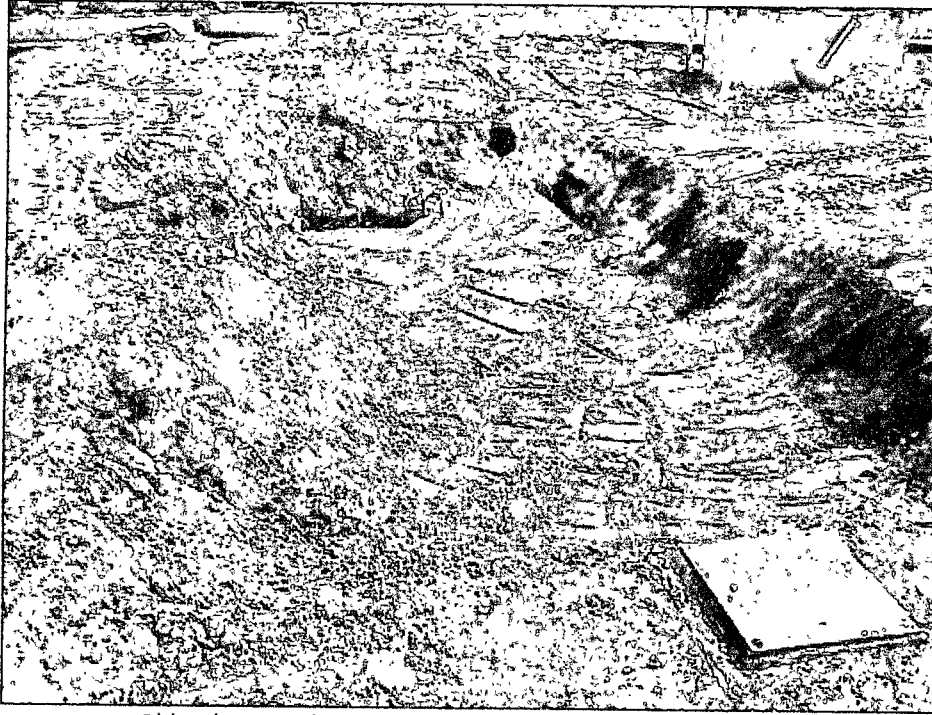
Engine #31 (North) Sump Soil Excavation Filling Looking North

Old Below Grade Tank Containment

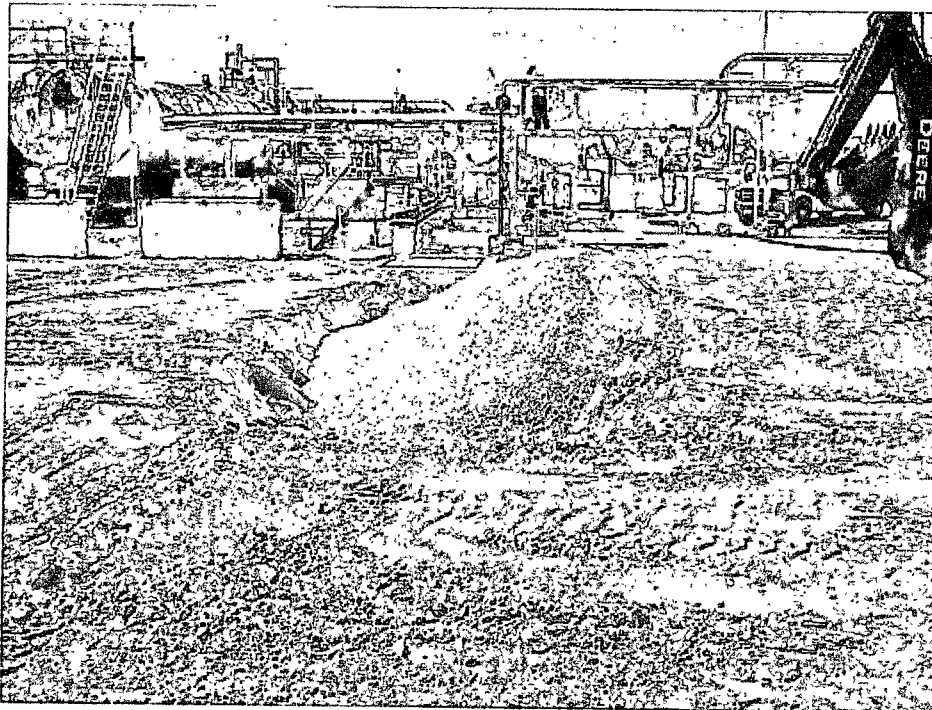


Old Below Grade Tank Containment Looking Southwest

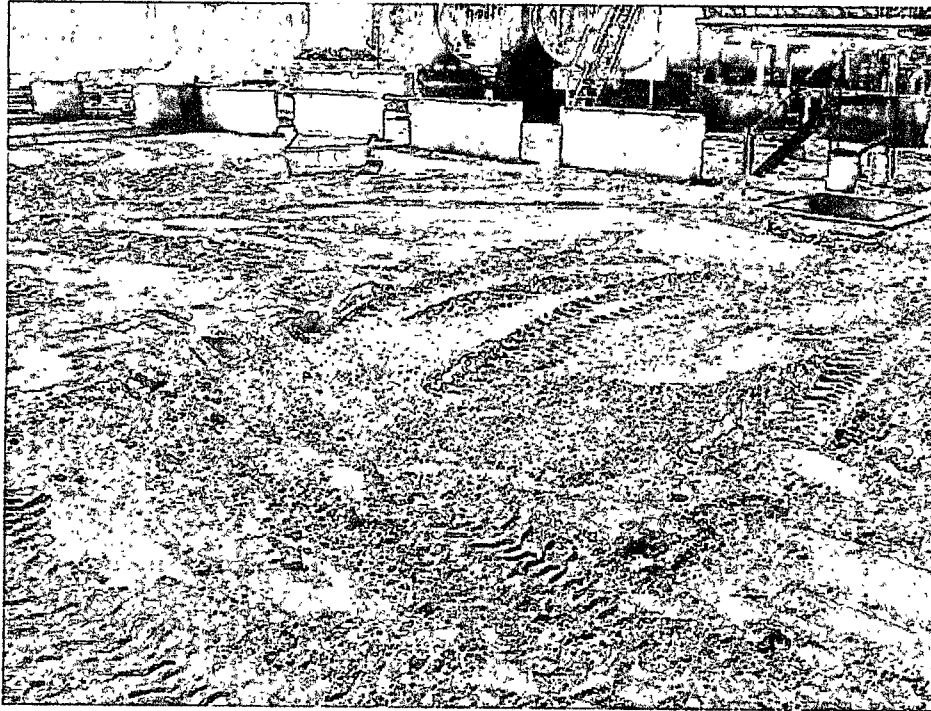




Old Below Grade Tank Containment Filling Looking North



Old Below Grade Tank Containment Filling Looking South



Old Below Grade Tank Containment Filling Looking Southeast



Old Below Grade Tank Containment Filling Looking East

Appendix B

Final C-141

**Approved C-141
(Sump Excavation and Concrete Containment Closure)**

Initial C-141