

AP - 47

STAGE 1 & 2 WORKPLANS

DATE:

7-27-10

Hansen, Edward J., EMNRD

From: Hack Conder [hconder@riceswd.com]
Sent: Tuesday, July 27, 2010 11:51 AM
To: Hansen, Edward J., EMNRD
Cc: Reed, Timothy
Attachments: BD Jct. F-17 38 excavation map.pdf

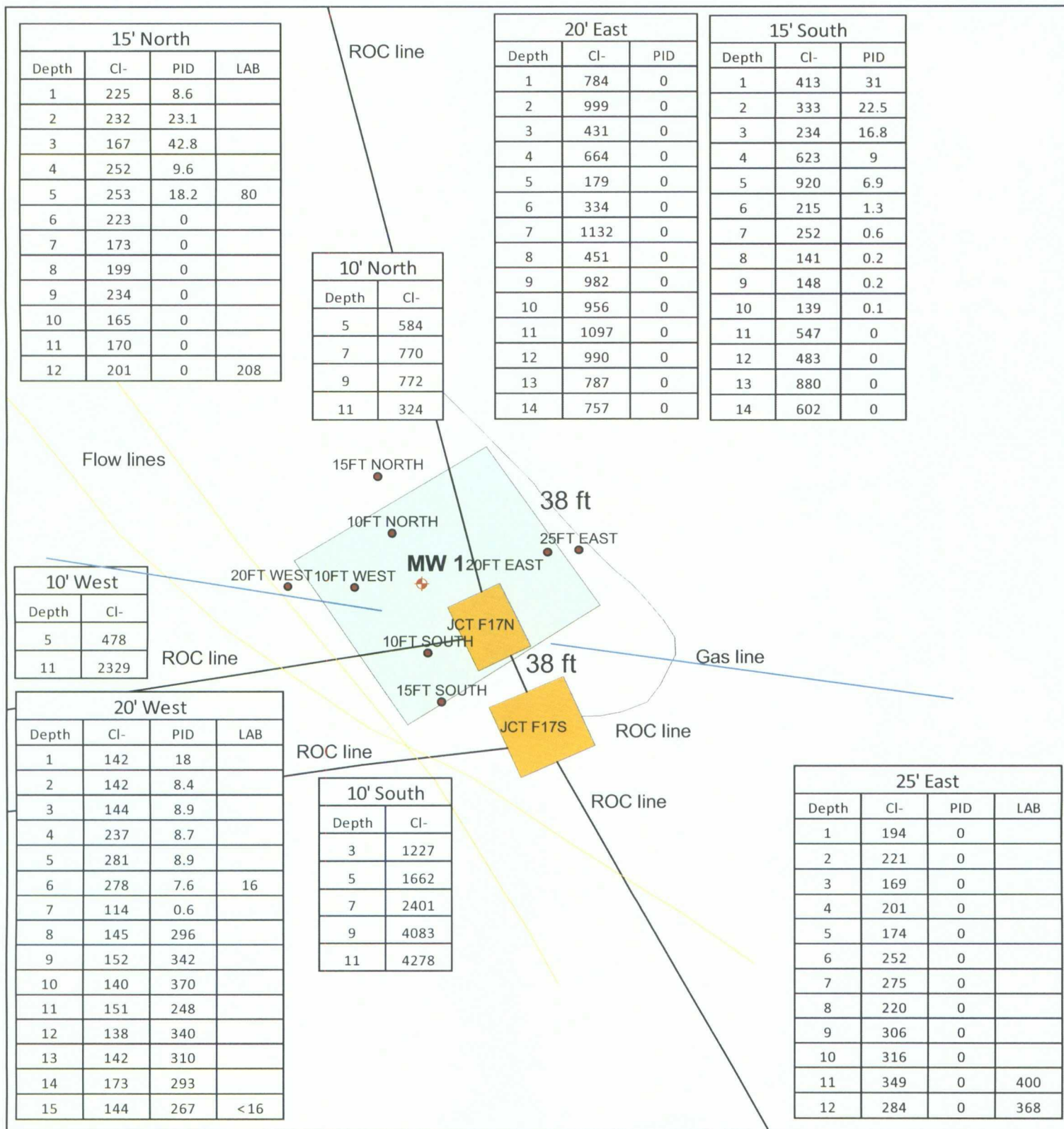
Mr. Hansen

Attached is the results of soil delineation at BD Jct. F-17 AP# 47 we propose to install a 20 mill reinforced liner with the dimensions of 38' X 38' at the site 4' feet below ground surface . The liner will be padded with sand 6 inches below and above. The soil excavated will be disposed of at NMOCD approved facility or blended onsite to below 500 ppm Cl- to be utilized for backfill . The remaining backfill will be imported and amendments added to support vegetation. The site will be seeded and monitored for growth .

The monitor well was installed on July 26th 2010 and we should have sample data in the next two weeks. Once we receive approval of installation of the barrier and complete the soil work , we will write a final report of activities. If you have any questions or concerns please call me.

Hack Conder
Environmental Manager
Rice Operating Company
575-393-9174
fax 575-397-1471

Soil Data



BD Jct. F-17

Legals: UL/F, Sec. 17,
T21S, R37E
NMOCD Case #: AP-47



0 10 20 40
Feet

Drawing date: 7-27-10
Drafted by: L. Weinheimer
Revised by: T. Grieco