

DATE IN 1-21-04	SUSPENSE 2/10/04	ENGINEER MS	LOGGED IN ms	TYPE NSL	APPROVED- APP NO. 402332960
-----------------	------------------	-------------	--------------	----------	--------------------------------

ABOVE THIS LINE FOR DIVISION USE ONLY

NEW MEXICO OIL CONSERVATION DIVISION
- Engineering Bureau -
1220 South St. Francis Drive, Santa Fe, NM 87505



Eagle 34K #43
K-34-175-27E

ADMINISTRATIVE APPLICATION CHECKLIST

THIS CHECKLIST IS MANDATORY FOR ALL ADMINISTRATIVE APPLICATIONS FOR EXCEPTIONS TO DIVISION RULES AND REGULATIONS WHICH REQUIRE PROCESSING AT THE DIVISION LEVEL IN SANTA FE

Application Acronyms:

[NSL-Non-Standard Location] [NSP-Non-Standard Proration Unit] [SD-Simultaneous Dedication]
[DHC-Downhole Commingling] [CTB-Lease Commingling] [PLC-Pool/Lease Commingling]
[PC-Pool Commingling] [OLS - Off-Lease Storage] [OLM-Off-Lease Measurement]
[WFX-Waterflood Expansion] [PMX-Pressure Maintenance Expansion]
[SWD-Salt Water Disposal] [IPI-Injection Pressure Increase]
[EOR-Qualified Enhanced Oil Recovery Certification] [PPR-Positive Production Response]

RECEIVED

[1] TYPE OF APPLICATION - Check Those Which Apply for [A]

- [A] Location - Spacing Unit - Simultaneous Dedication
☒ NSL ☐ NSP ☐ SD

JAN 21 2004

Check One Only for [B] or [C]

- [B] Commingling - Storage - Measurement
☐ DHC ☐ CTB ☐ PLC ☐ PC ☐ OLS ☐ OLM

Oil Conservation Division
1220 S. St. Francis Drive
Santa Fe, NM 87505

- [C] Injection - Disposal - Pressure Increase - Enhanced Oil Recovery
☐ WFX ☐ PMX ☐ SWD ☐ IPI ☐ EOR ☐ PPR

- [D] Other: Specify _____

[2] NOTIFICATION REQUIRED TO: - Check Those Which Apply, or ☐ Does Not Apply

- [A] ☐ Working, Royalty or Overriding Royalty Interest Owners
- [B] ☐ Offset Operators, Leaseholders or Surface Owner
- [C] ☐ Application is One Which Requires Published Legal Notice
- [D] ☐ Notification and/or Concurrent Approval by BLM or SLO
U.S. Bureau of Land Management - Commissioner of Public Lands, State Land Office
- [E] ☐ For all of the above, Proof of Notification or Publication is Attached, and/or,
- [F] ☐ Waivers are Attached

[3] SUBMIT ACCURATE AND COMPLETE INFORMATION REQUIRED TO PROCESS THE TYPE OF APPLICATION INDICATED ABOVE.

[4] CERTIFICATION: I hereby certify that the information submitted with this application for administrative approval is **accurate** and **complete** to the best of my knowledge. I also understand that **no action** will be taken on this application until the required information and notifications are submitted to the Division.

JAMES BRUCE
P.O. BOX 1056
SANTA FE, NM 87504
Print or Type Name

Note: Statement must be completed by an individual with managerial and/or supervisory capacity.

Signature

Title

Date

e-mail Address

James Bruce *Attorney for Applicant* *1/17/04*
James Bruce@aol.com

JAMES BRUCE
ATTORNEY AT LAW

POST OFFICE BOX 1056
SANTA FE, NEW MEXICO 87504

369 MONTEZUMA, NO. 213
SANTA FE, NEW MEXICO 87501

(505) 982-2043 (PHONE)
(505) 660-6612 (CELL)
(505) 982-2151 (FAX)

jamesbruc@aol.com

January 17, 2004

Michael E. Stogner
Oil Conservation Division
1220 South St. Francis Drive
Santa Fe, New Mexico 87505

Dear Mr. Stogner:

Pursuant to Division Rule 104.F(2), Devon Energy Production Company, L.P. ("Devon") applies for administrative approval of unorthodox oil well locations for the following wells in both the San Andres formation (~~South~~ Red Lake Queen-Grayburg-San Andres Pool) and Glorieta/Yeso formations (~~Undesignated~~ Northeast Red Lake Glorieta-Yeso Pool):

Well: Eagle 34F Federal Well No. 40
Location: 1550 feet FNL & 2110 feet FWL (Unit F)
Well Unit: SE $\frac{1}{4}$ NW $\frac{1}{4}$ of Section 34, Township 17 South, Range 27 East, N.M.P.M., Eddy County, New Mexico

Devon requests approval of simultaneous dedication of this well unit (in the San Andres formation) with the existing Eagle 34F Federal Well Nos. 11 and 12.

Well: Eagle 34K Federal Well No. 43 (Unit K)
Location: 2310 feet FSL & 2410 feet FWL
Well Unit: NE $\frac{1}{4}$ SW $\frac{1}{4}$ of Section 34, Township 17 South, Range 27 East, N.M.P.M., Eddy County, New Mexico

Devon requests approval of simultaneous dedication of this well unit (in the San Andres formation) with the existing Eagle 34FK Federal Well Nos. 20, 21, and 22, and simultaneous dedication of this well unit (in the Glorieta/Yeso formation) with the existing Eagle 34F Federal Well No. 20.

J

*This well is in
Unit J not K*

Well: Eagle 34L Federal Well No. 45 (Unit)
Location: 2310 feet FSL & 1170 feet FWL
Well Unit: NW $\frac{1}{4}$ SW $\frac{1}{4}$ of Section 34, Township 17 South, Range 27 East, N.M.P.M., Eddy County, New Mexico

Devon requests approval of simultaneous dedication of this well unit (in the San Andres formation) with the existing Eagle 34F Federal Well Nos. 23 and 24.

Both the ~~South~~ Red Lake Queen-Grayburg-San Andres Pool and Northeast Red Lake Glorieta-Yeso Pool are developed on statewide rules. Form C-102's for the wells are attached as Exhibits A-1, A-2, and A-3.

The application is based on engineering and topographic reasons. Attached as Exhibit B is a well plat of Glorieta-Yeso wells drilled or being drilled by Devon in Sections 34 and 35. Devon has an ongoing program to develop the Glorieta/Yeso by drilling two wells in each quarter-quarter section, in a northeast-southwest pattern. Wells are being placed in the northeast and southwest corners of each well unit to equalize the distance between the wells.

Attached as the fourth page of each of Exhibits A-1, A-2, and A-3 are survey plats of the well units. There are pipelines, lease roads, and electric lines requiring the wells to be moved from orthodox locations, requiring the wells to be unorthodox to remain in the northeast-southwest pattern.

The locations are based on the Glorieta/Yeso, but since the wells will also penetrate the San Andres, Devon will also attempt completions in that zone.

Attached as Exhibit C is a land plat, highlighting the three well units. The following leases are involved:

<u>Acreage</u>	<u>Lease</u>
E $\frac{1}{2}$ NW $\frac{1}{4}$ §34	United States Lease LC 064050-A
W $\frac{1}{2}$ NW $\frac{1}{4}$ & SW $\frac{1}{4}$ §34	United States Lease LC 067849
NE $\frac{1}{4}$ & NW $\frac{1}{4}$ SE $\frac{1}{4}$ §34	United States Lease NM 0557370

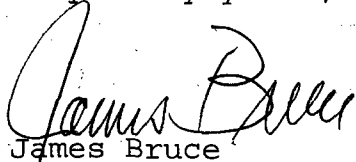
Royalty interests are the same in all leases, and Devon is the only working interest owner. The overriding royalty owners in the leases are as follows (ownership is not the same in all leases):

Summit Overseas Exploration, Inc.
Trustee U/W/O Howard B. Wright
Jane Ann Hudson Davis
Joan A. Hudson
Jonel Susan Grasso

The overriding royalty owners have been notified of this application by the letter attached as Exhibit D.

Please call me if you need any further information on this matter..

Very truly yours,

A handwritten signature in cursive script, appearing to read "James Bruce".

James Bruce

Attorney for Devon Energy
Production Company, L.P.

ADDRESS LIST FOR UNORTHODOX LOCATIONS
IN TOWNSHIP 17 SOUTH 27 EAST
SECTIONS 34 & 35

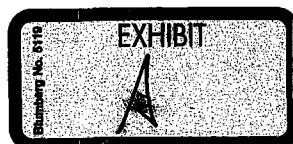
Summit Overseas Exploration, Inc.
P.O. Box 260590
Lakewood, CO 80226-0590

Howard B. Wright Trust
c/o Wells Fargo Bank, NA, Trustee
P.O. Box 5383
Denver, CO 80217-5383

Jane Ann Hudson Davis
6770 Wolf Creek Ct.
Rio Rancho, NM 87124

Joan A. Hudson
c/o Sun Trust Banks, Inc.
801 Laurel Oak Drive
Naples, FL 34108

Jonel Susan Grasso
11 Ocean Ridge
Laguna Niguel, CA 92677



UNITED STATES
DEPARTMENT OF THE INTERIOR
BUREAU OF LAND MANAGEMENT

FORM APPROVED
OMB No. 1004-0136
Expires November 30, 2000

APPLICATION FOR PERMIT TO DRILL OR REENTER

1a. Type of Work: <input checked="" type="checkbox"/> DRILL <input type="checkbox"/> REENTER		5. Lease Serial No. NMLC067849
1b. Type of Well: <input checked="" type="checkbox"/> Oil Well <input type="checkbox"/> Gas Well <input type="checkbox"/> Other <input checked="" type="checkbox"/> Single Zone <input type="checkbox"/> Multiple Zone		6. If Indian, Allottee or Tribe Name
2. Name of Operator DEVON ENERGY PRODUCTION CO. LP		7. If Unit or CA Agreement, Name and No.
Contact: KAREN COTTOM E-Mail: karen.cottom@dvn.com		8. Lease Name and Well No. EAGLE 34K FEDERAL 43
3a. Address 20 NORTH BROADWAY OKLAHOMA CITY, OK 73102-8260	3b. Phone No. (include area code) Ph: 405.228.7512 Fx: 405.552.4621	9. API Well No.
4. Location of Well (Report location clearly and in accordance with any State requirements. *) At surface NESW 2310FSL 2410FWL At proposed prod. zone NESW 2310FSL 2410FWL		10. Field and Pool, or Exploratory RED LAKE GLORIETA YESO NE
14. Distance in miles and direction from nearest town or post office* APPROX 5 MILES SOUTHEAST OF ARTESIA NM		11. Sec., T., R., M., or Blk. and Survey or Area Sec 34 T17S R27E Mer NMP
15. Distance from proposed location to nearest property or lease line, ft. (Also to nearest drig. unit line, if any)	16. No. of Acres in Lease 800.00	12. County or Parish EDDY
18. Distance from proposed location to nearest well, drilling, completed, applied for, on this lease, ft.	19. Proposed Depth 4000 MD	13. State NM
21. Elevations (Show whether DF, KB, RT, GL, etc.) 3566 GL	22. Approximate date work will start 12/15/2003	17. Spacing Unit dedicated to this well 40.00
		20. BLM/BIA Bond No. on file CO1104
		23. Estimated duration 45 DAYS

24. Attachments

The following, completed in accordance with the requirements of Onshore Oil and Gas Order No. 1, shall be attached to this form:

- | | |
|---|--|
| 1. Well plat certified by a registered surveyor. | 4. Bond to cover the operations unless covered by an existing bond on file (see Item 20 above). |
| 2. A Drilling Plan. | 5. Operator certification |
| 3. A Surface Use Plan (if the location is on National Forest System Lands, the SUPO shall be filed with the appropriate Forest Service Office). | 6. Such other site specific information and/or plans as may be required by the authorized officer. |

25. Signature (Electronic Submission)	Name (Printed/Typed) KAREN COTTOM	Date 11/06/2003
Title OPERATIONS TECHNICIAN		
Approved by (Signature)	Name (Printed/Typed)	Date
Title	Office	

Application approval does not warrant or certify the applicant holds legal or equitable title to those rights in the subject lease which would entitle the applicant to conduct operations thereon.
Conditions of approval, if any, are attached.

Title 18 U.S.C. Section 1001 and Title 43 U.S.C. Section 1212, make it a crime for any person knowingly and willfully to make to any department or agency of the United States any false, fictitious or fraudulent statements or representations as to any matter within its jurisdiction.

Additional Operator Remarks (see next page)

Electronic Submission #24843 verified by the BLM Well Information System
For DEVON ENERGY PRODUCTION CO. LP, sent to the Carlsbad



** ORIGINAL ** ORIGINAL ** ORIGINAL ** ORIGINAL ** ORIGINAL ** ORIGINAL ** ORIGINAL **

Additional Operator Remarks:

Devon Energy Production Company, LP proposes to drill a San Andres, Glorieta Yeso well per the approved Master Drilling and Surface Use Plan for the Red Lake Field Area to 4000' TD for commercial quantities of oil and gas. If the well is deemed noncommercial the well bore will be plugged and abandoned per Federal regulations.

Directions: From the junction of US Hwy 82 and Co. Rd. 204, go south 0.1 mile to Co. Rd. 225; thence South on 225 for approx. 2.1 mile to Co. Rd. 227; thence westerly on 227 for approx 0.5 mile to lease road; thence north on lease road for approx 0.7 mile to a point on the proposed well pad. Please see attached MDSUP.

DISTRICT I
1625 N. French Dr., Hobbs, NM 88240

DISTRICT II
811 South First, Artesia, NM 88210

DISTRICT III
1000 Rio Brazos Ed., Artesia, NM 87410

DISTRICT IV
2040 South Pacheco, Santa Fe, NM 87505

State of New Mexico
Energy, Minerals and Natural Resources Department

Form C-102
Revised March 17, 1999

Submit to Appropriate District Office
State Lease - 4 Copies
Fee Lease - 3 Copies

OIL CONSERVATION DIVISION

2040 South Pacheco
Santa Fe, New Mexico 87504-2088

☐ AMENDED REPORT

WELL LOCATION AND ACREAGE DEDICATION PLAT

API Number	Pool Code 96836	Pool Name RED LAKE GLORIETA YESO, NE
Property Code	Property Name EAGLE "34K" FEDERAL	Well Number 43
OGRID No. 6137	Operator Name DEVON ENERGY PRODUCTION CO., L.P.	Elevation 3566'

Surface Location

UL or lot No. K	Section 34	Township 17 S	Range 27 E	Lot Idn	Feet from the 2310	North/South line SOUTH	Feet from the 2410	East/West line WEST	County EDDY
--------------------	---------------	------------------	---------------	---------	-----------------------	---------------------------	-----------------------	------------------------	----------------

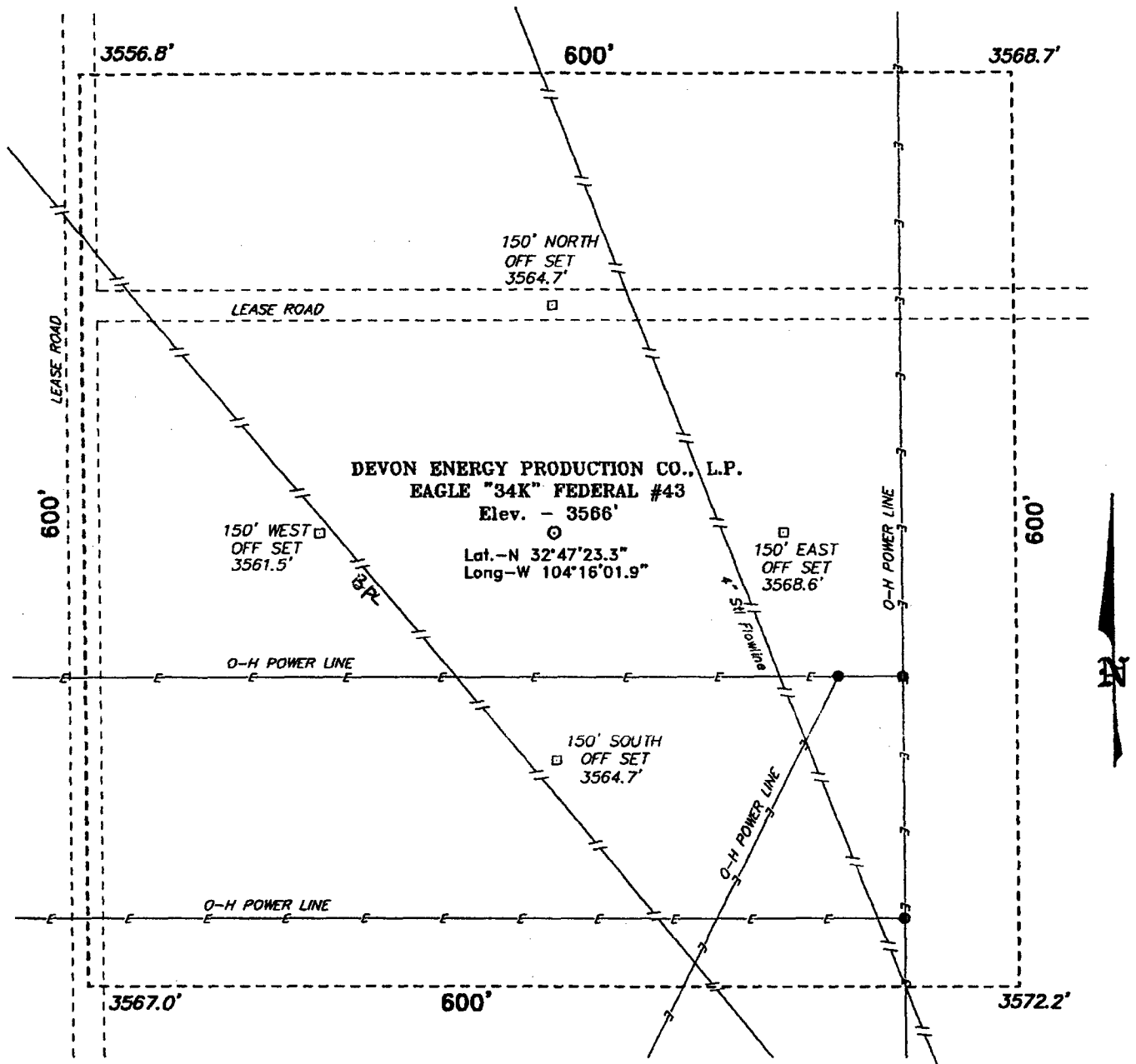
Bottom Hole Location If Different From Surface

UL or lot No.	Section	Township	Range	Lot Idn	Feet from the	North/South line	Feet from the	East/West line	County
Dedicated Acres 40	Joint or Infill	Consolidation Code	Order No.						

NO ALLOWABLE WILL BE ASSIGNED TO THIS COMPLETION UNTIL ALL INTERESTS HAVE BEEN CONSOLIDATED
OR A NON-STANDARD UNIT HAS BEEN APPROVED BY THE DIVISION

	OPERATOR CERTIFICATION I hereby certify the the information contained herein is true and complete to the best of my knowledge and belief. Signature Karen Cotton Printed Name Operations Technician Title November 5, 2003 Date
	SURVEYOR CERTIFICATION I hereby certify that the well location shown on this plat was plotted from field notes of actual surveys made by me or under my supervision, and that the same is true and correct to the best of my belief. OCTOBER 08, 2003 Date Surveyed Signature & Seal of Jones Professional Surveyor Certification No. Gary L. Jones 7977

**SECTION 34, TOWNSHIP 17 SOUTH, RANGE 27 EAST, N.M.P.M.,
EDDY COUNTY, NEW MEXICO.**



Directions to Location:

FROM THE JUNCTION OF US HWY 82 AND CO. RD. 204, GO SOUTH 0.1 MILE TO CO. RD. 225; THENCE SOUTH ON 225 FOR APPROX. 2.1 MILE TO CO. RD. 227; THENCE WESTERLY ON 227 FOR APPROX. 0.5 MILE TO LEASE ROAD; THENCE NORTH ON LEASE ROAD FOR APPROX. 0.7 MILE TO A POINT ON THE PROPOSED WELL PAD.



DEVON ENERGY PROD. CO., L.P.

REF: EAGLE "34K" FED. No. 43 / Well Pad Topo

THE EAGLE "34K" FED. No. 43 LOCATED 2310' FROM
THE SOUTH LINE AND 2410' FROM THE WEST LINE OF
SECTION 34, TOWNSHIP 17 SOUTH, RANGE 27 EAST,
N.M.P.M., EDDY COUNTY, NEW MEXICO.

BASIN SURVEYS P.O. BOX 1786-HOBBS, NEW MEXICO

W.O. Number: 3675 Drawn By: K. GOAD

Date: 10-10-2003 Disk: KJG CD#4 - 3675A.DWG

Survey Date: 10-08-2003

Sheet 1 of 1 Sheets

▲ NEXT 7 YESO WELLS
◇ 7 RENEW APDs
◇ 10 NEW APDs
● 3 RECENT YESO WELLS

MURCHISON O&G INC
WILLS FEDERAL #2
1885

HAYNES OWEN
HAYBOLD FEDERAL #1
2075

HAYNES OWEN
HAYBOLD FEDERAL #2
150

GEORGE A CHASE
HAYBOLD FEDERAL #1
1870

WOODWARD
HAYBOLD FEDERAL #2
1870

SMITH A J
HAYBOLD FEDERAL #1
2075

SMITH A J
HAYBOLD FEDERAL #1
2075

BROWNELL ROGER
TRIGO FEDERAL #1
2075

DEVON ENERGY CORP
EAGLE #20 FEDERAL #4
2075

DEVON ENERGY CORP
EAGLE #20 FEDERAL #1
2075

DEVON ENERGY CORP
EAGLE #20 FEDERAL #7
2075

DEVON ENERGY CORP
EAGLE #20 FEDERAL #1
2075

DEVON ENERGY CORP
EAGLE #20 FEDERAL #2
2075

DEVON ENERGY CORP
EAGLE #20 FEDERAL #1
2075

ENERGY CORP
EAGLE #20 FEDERAL #1
2075

DEVON ENERGY CORP
EAGLE #20 FEDERAL #7
2075

DEVON ENERGY PROO
EAGLE #20 FEDERAL #8
2075

DEVON ENERGY CORP
EAGLE #20 FEDERAL #7
2075

ENERGY CORP
EAGLE #20 FEDERAL #1
2075

DEVON ENERGY CORP
EAGLE #20 FEDERAL #1
2075

DEVON ENERGY CORP
EAGLE #20 FEDERAL #1
2075

DEVON ENERGY CORP
EAGLE #20 FEDERAL #13
2075

DEVON ENERGY CORP
EAGLE #20 FEDERAL #16
2075

PAN AMERICAN PETROLE
TRIGO FEDERAL #1
10810

DEVON ENERGY CORP
EAGLE #20 FEDERAL #11
2075

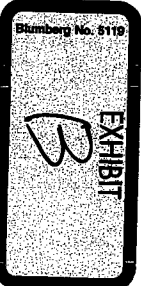
DEVON ENERGY CORP
EAGLE #20 FEDERAL #11
2075

DEVON ENERGY CORP
EAGLE #20 FEDERAL #14
2075

DEVON ENERGY CORP
EAGLE #20 FEDERAL #18
2075

DEVON ENERGY CORP
EAGLE #20 FEDERAL #18
2075

DEVON ENERGY CORP
EAGLE #20 FEDERAL #18
2075



DEVON ENERGY CORP
EAGLE #20 FEDERAL #22
2075

DEVON ENERGY CORP
EAGLE #20 FEDERAL #21
2075

DEVON ENERGY CORP
EAGLE #20 FEDERAL #21
2075

DEVON ENERGY CORP
EAGLE #20 FEDERAL #21
2075

DEVON ENERGY CORP
EAGLE #20 FEDERAL #21
2075

DEVON ENERGY CORP
EAGLE #20 FEDERAL #21
2075

DEVON ENERGY CORP
EAGLE #20 FEDERAL #21
2075

DEVON ENERGY CORP
EAGLE #20 FEDERAL #21
2075

DEVON ENERGY CORP
EAGLE #20 FEDERAL #21
2075

DEVON ENERGY CORP
EAGLE #20 FEDERAL #21
2075

DEVON ENERGY CORP
EAGLE #20 FEDERAL #21
2075

DEVON ENERGY CORP
EAGLE #20 FEDERAL #11
2075

DEVON ENERGY CORP
EAGLE #20 FEDERAL #12
2075

DEVON ENERGY CORP
EAGLE #20 FEDERAL #25
2075

DEVON ENERGY CORP
EAGLE #20 FEDERAL #27
2075

DEVON ENERGY CORP
EAGLE #20 FEDERAL #28
2075

DEVON ENERGY CORP
EAGLE #20 FEDERAL #28
2075

DEVON ENERGY CORP
EAGLE #20 FEDERAL #28
2075

DEVON ENERGY CORP
EAGLE #20 FEDERAL #28
2075

DEVON ENERGY CORP
EAGLE #20 FEDERAL #28
2075

DEVON ENERGY CORP
EAGLE #20 FEDERAL #28
2075

DEVON ENERGY CORP
EAGLE #20 FEDERAL #28
2075

DEVON ENERGY CORP
EAGLE #20 FEDERAL #28
2075

DEVON ENERGY CORP
EAGLE #20 FEDERAL #12
2075

DEVON ENERGY CORP
EAGLE #20 FEDERAL #14
2075

DEVON ENERGY CORP
EAGLE #20 FEDERAL #28
2075

DEVON ENERGY CORP
EAGLE #20 FEDERAL #28
2075

DEVON ENERGY CORP
EAGLE #20 FEDERAL #28
2075

DEVON ENERGY CORP
EAGLE #20 FEDERAL #28
2075

DEVON ENERGY CORP
EAGLE #20 FEDERAL #28
2075

DEVON ENERGY CORP
EAGLE #20 FEDERAL #28
2075

DEVON ENERGY CORP
EAGLE #20 FEDERAL #28
2075

DEVON ENERGY CORP
EAGLE #20 FEDERAL #28
2075

DEVON ENERGY CORP
EAGLE #20 FEDERAL #28
2075

DEVON ENERGY CORP
EAGLE #20 FEDERAL #28
2075

DEVON ENERGY CORP
EAGLE #20 FEDERAL #14
2075

DEVON ENERGY CORP
EAGLE #20 FEDERAL #14
2075

DEVON ENERGY CORP
EAGLE #20 FEDERAL #14
2075

DEVON ENERGY CORP
EAGLE #20 FEDERAL #14
2075

DEVON ENERGY CORP
EAGLE #20 FEDERAL #14
2075

COMPTON RD
MANE #2
3070

COMPTON RD
MANE #2
3070

DEVON ENERGY CORP
EAGLE #20 FEDERAL #14
2075

DEVON ENERGY CORP
EAGLE #20 FEDERAL #14
2075

DEVON ENERGY CORP
EAGLE #20 FEDERAL #14
2075

DEVON ENERGY CORP
EAGLE #20 FEDERAL #14
2075

DEVON ENERGY CORP
EAGLE #20 FEDERAL #14
2075

ATLANTIC RICHFIELD
HAYBOLD FEDERAL #1
2075

DEVON ENERGY CORP
EAGLE #20 FEDERAL #14
2075

DEVON ENERGY CORP
EAGLE #20 FEDERAL #14
2075

DEVON ENERGY CORP
EAGLE #20 FEDERAL #14
2075

DEVON ENERGY CORP
EAGLE #20 FEDERAL #14
2075

COMPTON RD
MANE #2
3070

COMPTON RD
MANE #2
3070

DEVON ENERGY CORP
EAGLE #20 FEDERAL #14
2075

DEVON ENERGY CORP
EAGLE #20 FEDERAL #14
2075

DEVON ENERGY CORP
EAGLE #20 FEDERAL #14
2075

Blumberg No. 5118
EXHIBIT

Logan Draw Oil Field

Logan

Draw

OIL Well
Oil Tank

Oil Well
(Inactive)

ESTELLE TA

BERRY 2

EVARTS 31 FED 4

EVARTS 31 FED 3

EVARTS 31 FED 2

EVARTS 31 FED 1

EVARTS 6 FED 1

EVARTS 6 FED 2

EVARTS 6 FED 3

EVARTS 6 FED 4

EVARTS 6 FED 5

EVARTS 6 FED 6

EVARTS 6 FED 7

EVARTS 6 FED 8

EVARTS 6 FED 9

EVARTS 6 FED 10

EVARTS 6 FED 11

EVARTS 6 FED 12

EVARTS 6 FED 13

EVARTS 6 FED 14

EVARTS 6 FED 15

EVARTS 6 FED 16

EVARTS 6 FED 17

EVARTS 6 FED 18

EVARTS 6 FED 19

EVARTS 6 FED 20

EVARTS 6 FED 21

EVARTS 6 FED 22

EVARTS 6 FED 23

EVARTS 6 FED 24

EVARTS 6 FED 25

EVARTS 6 FED 26

EVARTS 6 FED 27

EVARTS 6 FED 28

EVARTS 6 FED 29

EVARTS 6 FED 30

EVARTS 6 FED 31

EVARTS 6 FED 32

EVARTS 6 FED 33

EVARTS 6 FED 34

EVARTS 6 FED 35

EVARTS 6 FED 36

EVARTS 6 FED 37

EVARTS 6 FED 38

EVARTS 6 FED 39

EVARTS 6 FED 40

EVARTS 6 FED 41

EVARTS 6 FED 42

EVARTS 6 FED 43

EVARTS 6 FED 44

EVARTS 6 FED 45

EVARTS 6 FED 46

EVARTS 6 FED 47

EVARTS 6 FED 48

EVARTS 6 FED 49

EVARTS 6 FED 50

EVARTS 6 FED 51

EVARTS 6 FED 52

EVARTS 6 FED 53

EVARTS 6 FED 54

EVARTS 6 FED 55

EVARTS 6 FED 56

EVARTS 6 FED 57

EVARTS 6 FED 58

EVARTS 6 FED 59

EVARTS 6 FED 60

EVARTS 6 FED 61

EVARTS 6 FED 62

EVARTS 6 FED 63

EVARTS 6 FED 64

EVARTS 6 FED 65

EVARTS 6 FED 66

EVARTS 6 FED 67

EVARTS 6 FED 68

EVARTS 6 FED 69

EVARTS 6 FED 70

EVARTS 6 FED 71

EVARTS 6 FED 72

EVARTS 6 FED 73

EVARTS 6 FED 74

EVARTS 6 FED 75

EVARTS 6 FED 76

EVARTS 6 FED 77

EVARTS 6 FED 78

EVARTS 6 FED 79

EVARTS 6 FED 80

EVARTS 6 FED 81

EVARTS 6 FED 82

EVARTS 6 FED 83

EVARTS 6 FED 84

EVARTS 6 FED 85

EVARTS 6 FED 86

EVARTS 6 FED 87

EVARTS 6 FED 88

EVARTS 6 FED 89

EVARTS 6 FED 90

EVARTS 6 FED 91

EVARTS 6 FED 92

EVARTS 6 FED 93

EVARTS 6 FED 94

EVARTS 6 FED 95

EVARTS 6 FED 96

EVARTS 6 FED 97

EVARTS 6 FED 98

EVARTS 6 FED 99

EVARTS 6 FED 100

EVARTS 6 FED 101

EVARTS 6 FED 102

EVARTS 6 FED 103

EVARTS 6 FED 104

EVARTS 6 FED 105

EVARTS 6 FED 106

EVARTS 6 FED 107

EVARTS 6 FED 108

EVARTS 6 FED 109

EVARTS 6 FED 110

EVARTS 6 FED 111

EVARTS 6 FED 112

EVARTS 6 FED 113

EVARTS 6 FED 114

EVARTS 6 FED 115

EVARTS 6 FED 116

EVARTS 6 FED 117

EVARTS 6 FED 118

EVARTS 6 FED 119

EVARTS 6 FED 120

EVARTS 6 FED 121

EVARTS 6 FED 122

EVARTS 6 FED 123

EVARTS 6 FED 124

EVARTS 6 FED 125

EVARTS 6 FED 126

EVARTS 6 FED 127

EVARTS 6 FED 128

EVARTS 6 FED 129

EVARTS 6 FED 130

EVARTS 6 FED 131

EVARTS 6 FED 132

EVARTS 6 FED 133

EVARTS 6 FED 134

EVARTS 6 FED 135

EVARTS 6 FED 136

EVARTS 6 FED 137

EVARTS 6 FED 138

EVARTS 6 FED 139

EVARTS 6 FED 140

EVARTS 6 FED 141

EVARTS 6 FED 142

EVARTS 6 FED 143

EVARTS 6 FED 144

EVARTS 6 FED 145

EVARTS 6 FED 146

EVARTS 6 FED 147

EVARTS 6 FED 148

EVARTS 6 FED 149

EVARTS 6 FED 150

EVARTS 6 FED 151

EVARTS 6 FED 152

EVARTS 6 FED 153

EVARTS 6 FED 154

EVARTS 6 FED 155

EVARTS 6 FED 156

EVARTS 6 FED 157

EVARTS 6 FED 158

EVARTS 6 FED 159

EVARTS 6 FED 160

EVARTS 6 FED 161

EVARTS 6 FED 162

EVARTS 6 FED 163

EVARTS 6 FED 164

EVARTS 6 FED 165

EVARTS 6 FED 166

EVARTS 6 FED 167

EVARTS 6 FED 168

EVARTS 6 FED 169

EVARTS 6 FED 170

EVARTS 6 FED 171

EVARTS 6 FED 172

EVARTS 6 FED 173

EVARTS 6 FED 174

EVARTS 6 FED 175

EVARTS 6 FED 176

EVARTS 6 FED 177

EVARTS 6 FED 178

EVARTS 6 FED 179

EVARTS 6 FED 180

EVARTS 6 FED 181

EVARTS 6 FED 182

EVARTS 6 FED 183

EVARTS 6 FED 184

EVARTS 6 FED 185

EVARTS 6 FED 186

EVARTS 6 FED 187

EVARTS 6 FED 188

EVARTS 6 FED 189

EVARTS 6 FED 190

EVARTS 6 FED 191

EVARTS 6 FED 192

EVARTS 6 FED 193

EVARTS 6 FED 194

EVARTS 6 FED 195

EVARTS 6 FED 196

EVARTS 6 FED 197

EVARTS 6 FED 198

EVARTS 6 FED 199

EVARTS 6 FED 200

EVARTS 6 FED 201

EVARTS 6 FED 202

EVARTS 6 FED 203

EVARTS 6 FED 204

EVARTS 6 FED 205

EVARTS 6 FED 206

EVARTS 6 FED 207

EVARTS 6 FED 208

EVARTS 6 FED 209

EVARTS 6 FED 210

EVARTS 6 FED 211

EVARTS 6 FED 212

EVARTS 6 FED 213

EVARTS 6 FED 214

EVARTS 6 FED 215

EVARTS 6 FED 216

EVARTS 6 FED 217

EVARTS 6 FED 218

EVARTS 6 FED 219

EVARTS 6 FED 220

EVARTS 6 FED 221

EVARTS 6 FED 222

EVARTS 6 FED 223

EVARTS 6 FED 224

EVARTS 6 FED 225

EVARTS 6 FED 226

EVARTS 6 FED 227

EVARTS 6 FED 228

EVARTS 6 FED 229

EVARTS 6 FED 230

EVARTS 6 FED 231

EVARTS 6 FED 232

EVARTS 6 FED 233

EVARTS 6 FED 234

EVARTS 6 FED 235

EVARTS 6 FED 236

EVARTS 6 FED 237

EVARTS 6 FED 238

EVARTS 6 FED 239

EVARTS 6 FED 240

EVARTS 6 FED 241

EVARTS 6 FED 242

EVARTS 6 FED 243

EVARTS 6 FED 244

EVARTS 6 FED 245

EVARTS 6 FED 246

EVARTS 6 FED 247

EVARTS 6 FED 248

EVARTS 6 FED 249

EVARTS 6 FED 250

EVARTS 6 FED 251

EVARTS 6 FED 252

EVARTS 6 FED 253

EVARTS 6 FED 254

EVARTS 6 FED 255

EVARTS 6 FED 256

EVARTS 6 FED 257

EVARTS 6 FED 258

EVARTS 6 FED 259

EVARTS 6 FED 260

EVARTS 6 FED 261

EVARTS 6 FED 262

EVARTS 6 FED 263

EVARTS 6 FED 264

EVARTS 6 FED 265

EVARTS 6 FED 266

EVARTS 6 FED 267

JAMES BRUCE
ATTORNEY AT LAW

POST OFFICE BOX 1056
SANTA FE, NEW MEXICO 87504

369 MONTEZUMA, NO. 213
SANTA FE, NEW MEXICO 87501

(505) 982-2043 (PHONE)
(505) 660-6612 (CELL)
(505) 982-2151 (FAX)

jamesbruc@aol.com

January 17, 2003

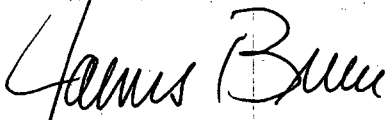
CERTIFIED MAIL - RETURN RECEIPT REQUESTED

To: Persons on Exhibit A

Ladies and gentlemen:

Enclosed is a copy of an application, filed with the New Mexico Oil Conservation Division by Devon Energy Production Company, L.P., requesting administrative approval of unorthodox oil well locations in the San Andres and Glorieta/Yeso formations in the SE $\frac{1}{4}$ NW $\frac{1}{4}$, NE $\frac{1}{4}$ SW $\frac{1}{4}$, and NW $\frac{1}{4}$ SW $\frac{1}{4}$ of Section 34, Township 17 South, Range 27 East, NMPM, Eddy County, New Mexico. You own an interest offsetting the wells' locations. If you object to the well's location, you must notify the Division in writing no later than Friday, February 6, 2004 (1220 South St. Francis Drive, Santa Fe, New Mexico 87505; attention: Michael E. Stogner). Failure to object will preclude you from contesting this matter at a later date.

Very truly yours,


James Bruce

Attorney for Devon Energy
Production Company, L.P.

