

12

# Hondo Oil & Gas Company

1978  
Box ~~7000~~

Roswell, New Mexico

May 13, 1964

117

Mr. A. L. Porter, Jr.  
Secretary - Director  
New Mexico Oil Conservation Commission  
Post Office Box 2088  
Santa Fe, New Mexico

Re: Commingle Wolfcamp Production  
From Five Hondo Leases Without  
First Separately Metering.

Dear Mr. Porter:

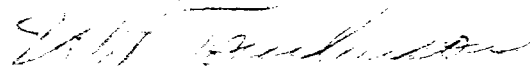
The Hondo Oil & Gas Company hereby submits application for commingling without first separately metering oil production from five different leases of common working interest, royalty interest, and overriding interest. Based on our discovery well, the Singer No. 1 located in Unit B of Section 18, Township 20 South, Range 27 East, Eddy County, we expect to find Wolfcamp production underlying these five leases.

Our Singer No. 1 well will be completed within a week. We expect to start the Singer "A" No. 1 and the Singer "C" No. 1 within a week. The Singer "B" No. 1 and Singer "D" No. 1 will be started before July 15, 1964.

Attached is a schematic diagram of the proposed installation and a plat showing the five Singer leases and the locations of the first five wells. We propose to commingle Wolfcamp oil production from these five leases without separately metering. The battery will have a test loop to enable us to test each well periodically.

By copy of this application, we are notifying all parties owning an interest in the five Singer leases of our intention to commingle production without separately metering the production from each lease.

Yours very truly,



W. P. Tomlinson  
District Engineer

WPT:JKA:ly  
Attachments

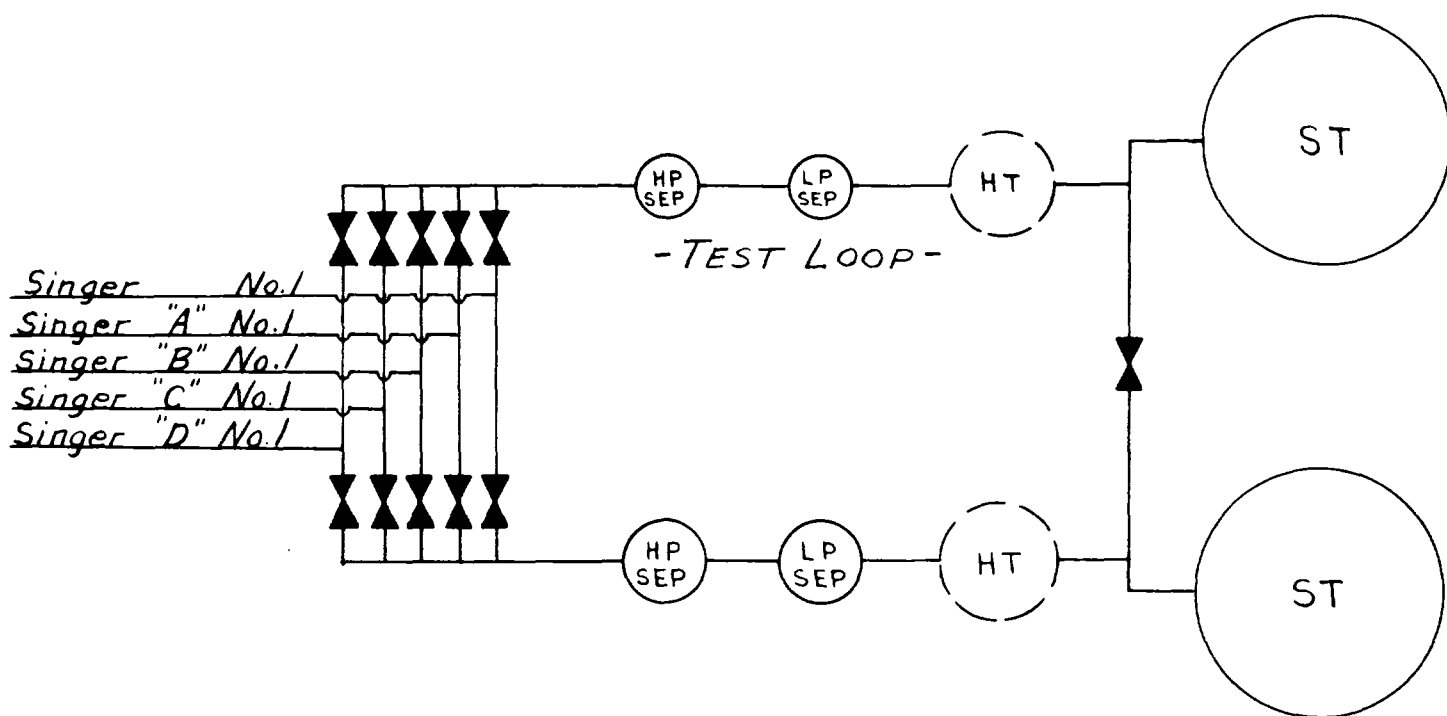
Mailing List of All Parties Owning A Working Interest, Royalty  
Interest, or Overriding Interest in the Hondo Oil & Gas Company  
Singer Leases.

---

Investors Royalty Company, Inc.  
1309 Thompson Building  
Tulsa 3, Oklahoma

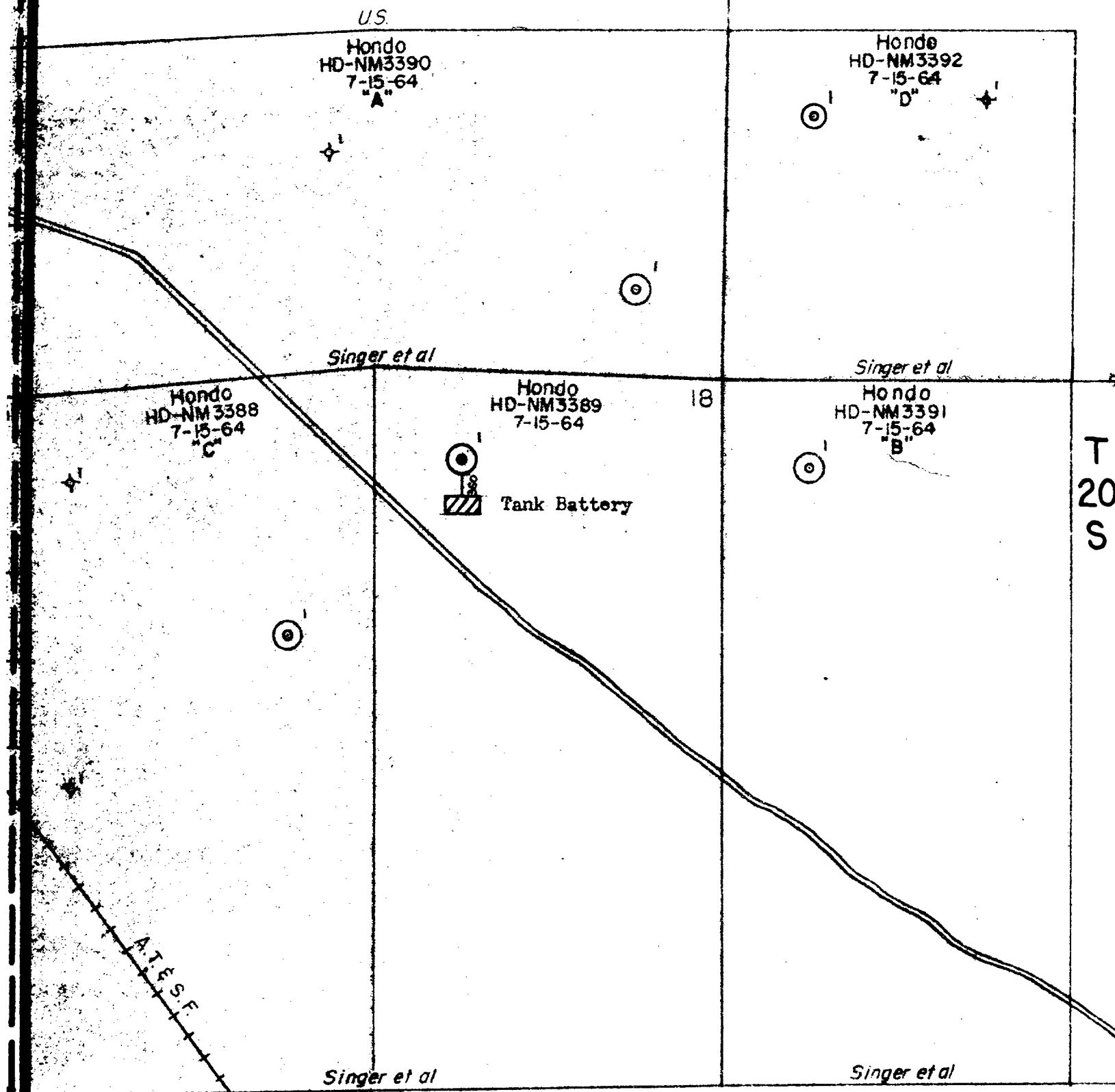
Kansas City Min - Royalty Company  
Commerce Trust Building  
Kansas City, Missouri

Singer Brothers  
(A co-partnership composed of  
Alex Singer and Joe L. Singer)  
Box 755  
Tulsa, Oklahoma



*Proposed Commingling Facilities For  
Hondo Oil & Gas Company Singer Battery  
Eddy County, New Mexico*

R 27-E



ALLA OF HONDO OIL & GAS COMPANY  
SINGLE LEASES

SCALE: 1" = 1,000'

- ⊙ Wolfcamp Producer
- ⊙ Expected Wolfcamp Producer