



PHILLIPS PETROLEUM COMPANY
Exploration & Production Department

P. O. Box 2130
Hobbs, New Mexico

20 OCT 20 AM 11

October 19, 1964

In re: Administrative Order CTB-119

Mr. A. L. Porter, Jr., Secretary-Director (3)
New Mexico Oil Conservation Commission
P. O. Box 2088
Santa Fe, New Mexico

Dear Sir:

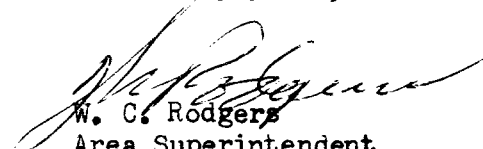
Phillips Petroleum Company hereby applies for amendment to Administrative Order CTB-119. This order presently approves exception to Rule 309-A and permits commingling into Santa Fe Battery No. 1 of Vacuum Grayburg-San Andres production from State B-1606 Lease, described as NW/4 SW/4 and SW/4 NW/4 of Section 31, and State B-1861 Lease, described as SW/4 SE/4 of Section 31, Township 17 South, Range 35 East, Lea County, New Mexico.

In addition to the above two State leases we propose to commingle production from State B-1501 Lease, described as W/2, SE/4 of Section 30, Township 17 South, Range 35 East, Lea County, into the Santa Fe Battery No. 1. The two wells on State B-1501 are presently producing into Santa Fe Battery No. 2. Battery No. 2 is to be abandoned for economic reasons.

There is attached a copy of the Commissioner of Public Lands letter, that approves the commingling of production from the three separate State Leases. All of the wells on these leases produce from the Vacuum Grayburg-San Andres Pool, and ownership is common throughout.

The attached plat shows the location of these leases, wells and batteries. Also attached is a copy of the pipe line's letter which states they concur with this application.

Very truly yours,


W. C. Rodgers
Area Superintendent
Production Division

MGC:wma
Attach.

TEXAS-NEW MEXICO PIPE LINE COMPANY

P. A. LYONS
DIVISION MANAGER

P. O. BOX 1510
MIDLAND, TEXAS 79701

October 16, 1964

New Mexico Oil Conservation Commission
Box 871
Santa Fe, New Mexico

Gentlemen:

Phillips Petroleum Company advises that they intend to make application to the New Mexico Oil Conservation Commission for permission to commingle San Andres production in Sections 30 and 31, T-17-S, R-35-E, Lea County, New Mexico.

Texas-New Mexico Pipe Line Company will gather the production from this lease and concurs with the operator's application to commingle these crudes.

Yours very truly,

TEXAS-NEW MEXICO PIPE LINE COMPANY

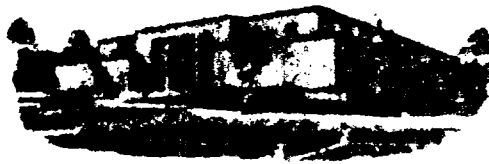
By


P. A. Lyons
Division Manager

LPS-NLB

WPF

State of New Mexico



Commissioner of Public Lands



E. S. JOHNNY WALKER
COMMISSIONER

P. O. BOX 1148
SANTA FE, NEW MEXICO

October 7, 1964

Phillips Petroleum Company
Post Office Box 2130
Hobbs, New Mexico

Att: W. C. Rodgers

In RE: Request to commingle
production from three
state leases, B-1501,
B-1606, and B-1861.

Gentlemen:

In reference to your letter of September 28, 1964, wherein you gave us the additional information we had requested, the State Land Office does hereby approve your request to commingle Lease B-1501, Battery number #2, with Leases B-1606, and B-1861, Battery Number #1, since ownership is common throughout, and since the revenue through this installation will result in an increase.

This approval, however, is given by the Commissioner of Public Lands, with the reservation that he can amend or withdraw same should a loss of revenue occur at any time.

Thank you very much for your cooperation in furnishing us with the additional information.

Very truly yours,

E. S. JOHNNY WALKER,
Commissioner of Public Lands

By

A handwritten signature in cursive script, reading "Ted Bilberry".

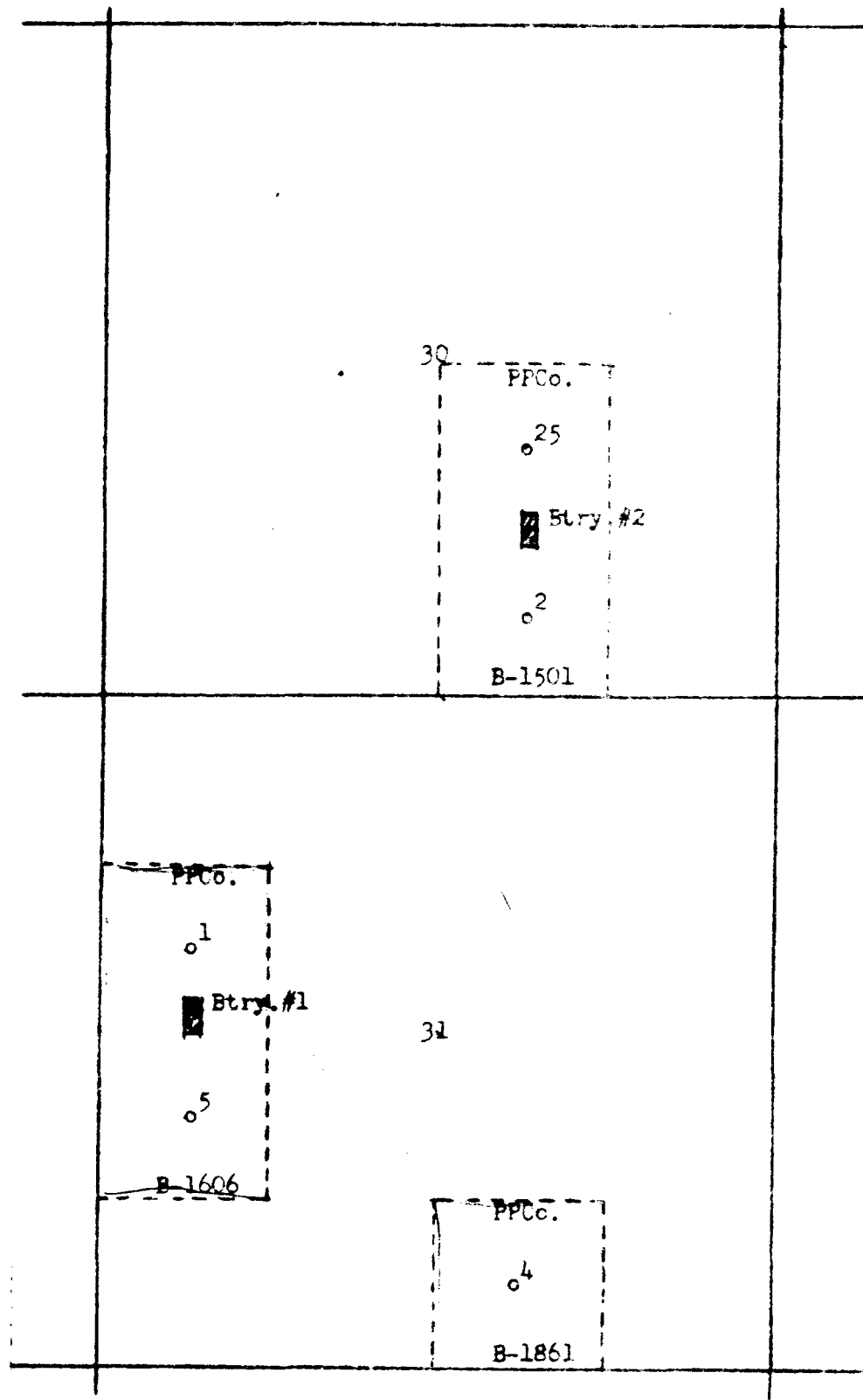
TED BILBERRY, Director,
Oil and Gas Department

ESJW/RGM/TB/kcl
w/cc to:

Oil Conservation Commission
Oil and Gas Accounting Commission

Phillips Petroleum Company
Santa Fe Lease - Lea County
Vacuum San Andres Pool

T
17
S



R-35-E

October 16, 1964

New Mexico Oil Conservation Commission
Box 871
Santa Fe, New Mexico

Gentlemen:

Phillips Petroleum Company advises that they intend to make application to the New Mexico Oil Conservation Commission for permission to commingle San Andres production in Sections 30 and 31, T-17-S, R-35-E, Lea County, New Mexico.

Texas-New Mexico Pipe Line Company will gather the production from this lease and concurs with the operator's application to commingle these crudes.

Yours very truly,

TEXAS-NEW MEXICO PIPE LINE COMPANY

By



P. A. Lyons
Division Manager

LPS-MLB

WPF

