

# PAN AMERICAN PETROLEUM CORPORATION

P. O. Box 480, Farmington, New Mexico  
September 11, 1964

File: N-601-986.510.1

Subject: Application of Pan American  
Petroleum Corporation to Commingle  
Production From Navajo Tribal "N",  
"P" and "U" Leases, Tocito Dome  
Pennsylvanian "D" Field  
San Juan County, New Mexico

Mr. A. L. Porter, Jr. (3)  
New Mexico Oil Conservation Commission  
P. O. Box 2088  
Santa Fe, New Mexico

Dear Sir:

Pan American Petroleum Corporation hereby makes Application pursuant to Rule 309-B for Administrative Approval to commingle production from its oil wells on its Navajo Tribal "N", "P" and "U" Leases in the Tocito Dome Pennsylvanian "D" Pool, San Juan County, New Mexico. In connection with this Application applicant states the following:

1. All production to be commingled is from the same common source of supply.
2. Adequate facilities will be provided for accurately determining production from each well at reasonable intervals.
3. The Navajo Tribal "N", "P" and "U" Leases all have the same royalty rate, there are no overrides, and Pan American is the only working interest owner.
4. The attached copy of a letter from Rock Island Oil and Refining Company, Inc., dated August 24, 1964, grants the approval of the purchaser of this production to the commingling facility.
5. The attached copy of a letter, dated September 9, 1964, from the U. S. Geological Survey as the representative of the royalty owners approves the commingling facility.

Attached is a map of the Tocito Dome Pennsylvanian "D" Pool area, showing the location of Pan American's Navajo Tribal "N", "P" and "U" Leases. Navajo Tribal "N" No. 2 well and Navajo Tribal "U" No. 1 are completed and

Page 2  
Mr. A. L. Porter (3)

September 11, 1964  
N-601-986.510.1

producing oil wells from the Tocito Dome Pennsylvanian "D" Pool, each one being capable of more than top allowable production. Navajo Tribal "U" No. 2 and Navajo Tribal "N" No. 3 are active drilling wells projected to and expected to be successfully completed in the Tocito Dome Pennsylvanian "D" Pool. There is, at present, no production from the Navajo Tribal "P" Lease but it is believed that this lease will prove to be productive of oil and ask that it be included as a part of the commingling facility.

Also attached is a sketch showing the layout of the central tank battery and commingling facility which will be installed. In this sketch production from each oil well enters the facility through an individual flow-line and into the manifold valves "C". From this point production passes into high pressure separator "B" from which the high pressure gas goes directly into the sales line and the oil goes to the low pressure separator "D". From the low pressure separator "D" the oil goes to the stock tank. The low pressure gas goes to compressor "G" and then to the sales line.

Individual wells may be tested by diverting the flow from a particular well through high pressure separator "E" and low pressure metering separator "F".

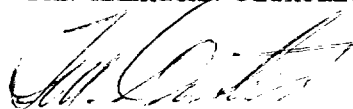
This commingling facility will be constructed, maintained, and operated at all times in accordance with the Commission's "Manual for the Installation and Operation of Commingling Facilities."

We would appreciate your early consideration and approval of our proposed commingling facility so that the equipment may be obtained and installed at an early date.

At the present time, temporary storage facilities are being used on the Navajo Tribal "U" Lease and we would like to lay and bury permanent flow-lines prior to the onset of inclement weather.

Yours very truly,

PAN AMERICAN PETROLEUM CORPORATION



T. M. Curtis  
District Superintendent

GWE:en  
Attach.

cc: Mr. E. C. Arnold  
New Mexico Oil Conservation Commission  
Aztec, New Mexico



OVEN

FARMINGTON DISTRICT		
	DS	
1	DE	✓
	DOO	
	AS	
	AC	
	EE	
	OE	
2	RE	blue

AM 5-5674 • 321 WEST DOUGLAS  
WICHITA 2, KANSAS

**H. G. WILLIAMS**  
VICE-PRESIDENT, MANAGER  
CRUDE OIL PURCHASES  
PIPE LINES

**August 24, 1964**

Re: Your File N-550-986.510.1

We have your letter of August 18 regarding your proposal to install a single tank battery to commingle products from all oil wells in your Navajo Tribal "N", "P", and "U" leases, Tocito Dome Pennsylvanian "D" Pool, San Juan County, New Mexico, and see no reason why we would object to this proposal.

Our approval of this project is, of course, limited to our purchase of the oil as long as there is no commingling of production from separate formations or zones or is not in any way in violation of the NMOC rules and regulations.

Very truly yours,

ROCK ISLAND OIL & REFINING CO., INC.

H. G. Williams  
Vice-President

HGW/rr



IN REPLY REFER TO:

UNITED STATES  
DEPARTMENT OF THE INTERIOR  
GEOLOGICAL SURVEY

P. O. Drawer 1857  
Roswell, New Mexico

September 9, 1964

Pan American Petroleum Corp.  
P. O. Box 480  
Farmington, New Mexico

Attention: Mr. T. M. Curtis

Gentlemen:

Your letter of August 18, with attachments, addressed to Mr. P. T. McGrath requests approval for the commingling of production from your Navajo tribal "P", "U", and "N" leases in the Tocito Dome Pennsylvanian "D" pool on Navajo tribal leases 14-20-603-5033, -5034, and -5035.

According to the system, as outlined in your letter, with additional information furnished by letter of August 26, a metering separator will be installed in parallel with the regular production separators to allow periodic individual well tests. The low pressure separator gas will be compressed to deliver into a sales line.

The method you propose for the commingling of production from leases 14-20-603-5033, -5034, and -5035 is satisfactory to this office. For royalty purposes the volume of oil delivered to the stock tanks and gas delivered to a sales line should be prorated back to the leases based upon a test split. Form 9-361, Lessee's Monthly Report of Sales and Royalty, must show all computations used in the calculation of the oil and gas volume for each lease. Any change in this system must receive prior approval from this office.

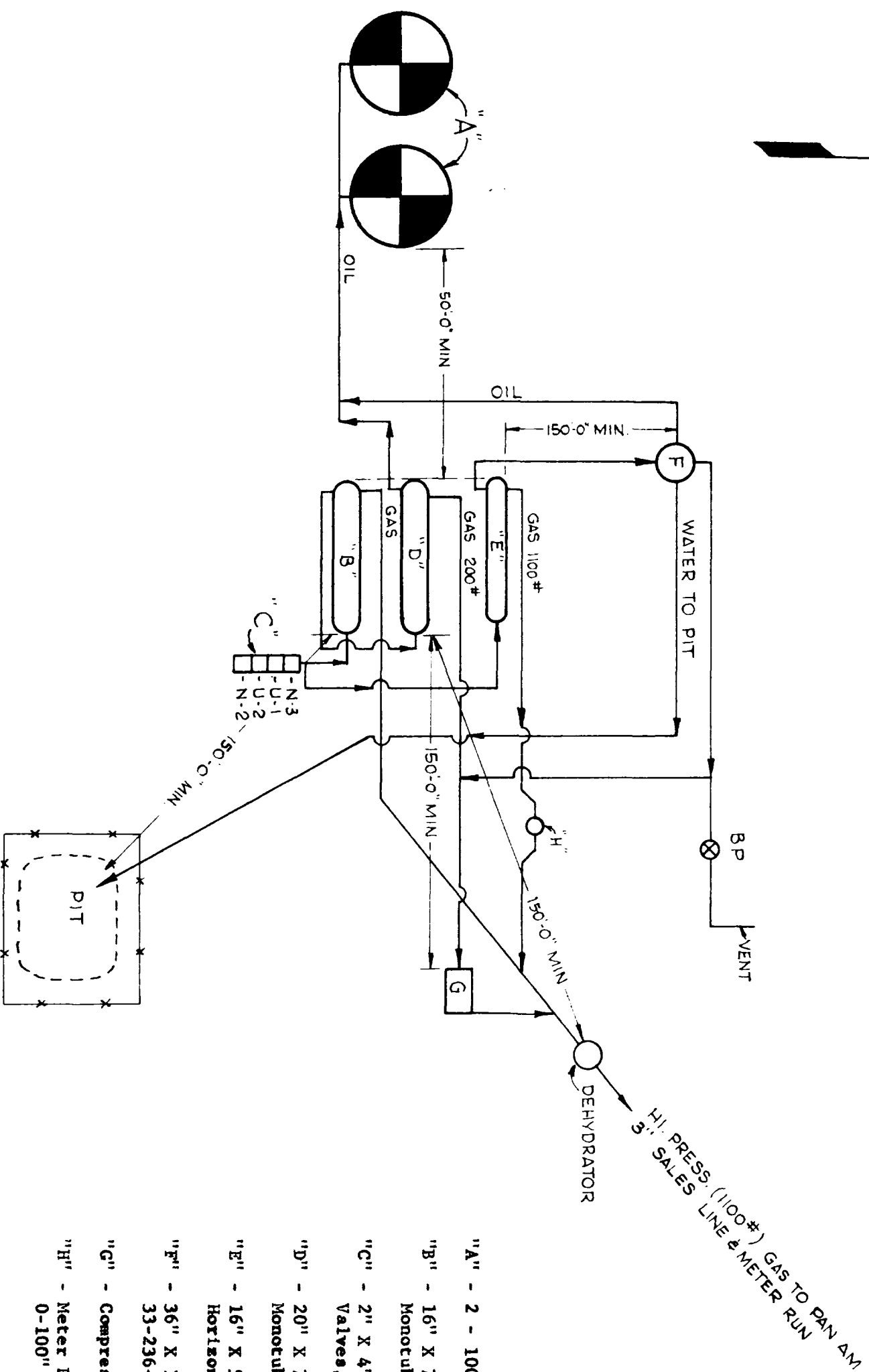
You are requested to notify our Farmington office when the installation is completed so that a field inspection of the system can be made. Also, please notify this office when production from your Navajo tribal "P" lease is introduced into the system.

Sincerely yours,



JOHN A. ANDERSON

Regional Oil and Gas Supervisor



- "A" - 2 - 1000-bbl. TP-BS Lease Tanks - Installed
- "B" - 16" X 7'6" National Tank Co. 1200# W.P. Horizontal Monotube 3-phase separator w/oil section blanked off.
- "C" - 2" X 4" National Tank Co. Model 670V-221-3 Maniflo Valves, 1500# W.P. 3000# test.
- "D" - 20" X 7½" National Tank Co. 230# W.P. Horizontal Monotube Model 3MGO-220-7½ separator.
- "E" - 16" X 5' National Tank Co. 1200# W.P. Model 3MGO-1216-5 Horizontal Monotube Test Separator
- "F" - 36" X 12'6" National Tank Co. 230# W.P. Model TVMS-2B-33-236-12.5 Metering Separator.
- "G" - Compressor - Compress gas from 200 PSI to 1100 PSI
- "H" - Meter Run w/ASA - 600-lb. Orifice fitting & Barton 0-100" 0-1500# Meter.

**PAN AMERICAN  
PETROLEUM CORPORATION**

FLOW DIAGRAM & GENERAL LAYOUT  
CENTRAL TANK BATTERY FOR  
NAVAJO TRIBAL N.P. & U. LEASES  
TOCITO DOME PENN. "D" FIELD

LARGE FORMAT  
EXHIBIT HAS  
BEEN REMOVED  
AND IS LOCATED  
IN THE NEXT FILE