



CABOT CORPORATION

P. O. BOX 1101, PAMPA, TEXAS

CABLE ADDRESS: CABLAK PAMPA
TELEPHONE: MO-PA 4-2581

MAIN OFFICE ONLY

'69 JUN 4 AM 8 35

June 3, 1969

AIRMAIL

New Mexico Oil Conservation Commission
P. O. Box 2088
Santa Fe, New Mexico

Attention Mr. Dan Nutter

Gentlemen:

As per our telephone conversation of June 2, 1969, concerning Cabot's application for commingling of production from the State "T" and "U" Leases (New Mexico K-3657 and K-3846 respectively), please find attached copies of approval letters from the Commissioner of Public Lands and The Permian Corporation, the oil purchaser.

As I indicated, we are preparing to initiate production on the New Mexico State "U" Lease, and the "T" Lease is already producing. If there is any other necessary information relative to granting this application, please advise.

Your timely handling of this matter will be greatly appreciated.

Yours truly,

Bill W. Dunn

BWD:pja

Attachments

MAIN OFFICE 0000

'69 JUN 4 AM 8 35

New Mexico Oil Conservation Commission
P. O. Box 2088
Santa Fe, New Mexico 87501

Gentlemen:

We hereby waive any objections and consent to the granting of an exception to Rule 309-A to Cabot Corporation permitting commingling of oil production from their State "T" lease, SE/4 of Section 32, T13S, R33E and the NE/4 of Section 4, T14S, R33E, and the State "U" lease, E/2 of Section 4, T14S, R33E, Lea County, New Mexico, into a common tank battery.

Yours very truly,

~~CITIES SERVICE OIL COMPANY~~
THE PERMIAN CORPORATION

By

George E. Eng

Title

Crude oil Representative

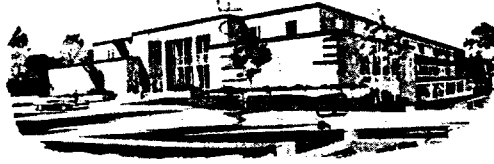
Date

5-14-69



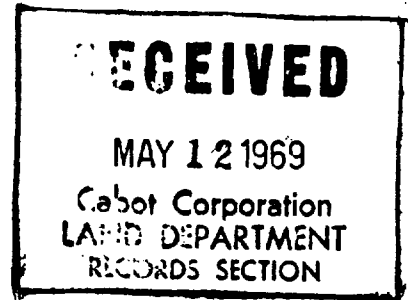
ALEX J. ARMIJO
COMMISSIONER

State of New Mexico



Commissioner of Public Lands

May 9, 1969



P. O. BOX 1148
SANTA FE, NEW MEXICO

Cabot Corporation
P. O. Box 1101
Pampa, Texas

Re: Commingling of Cabot St. "T"
and St. "U" Leases
State Leases K-3657 & K-3846

ATTENTION: Mr. Bill W. Dunn

Gentlemen:

The above request is hereby approved by the Commissioner of Public Lands with the understanding that the Commissioner may withdraw his approval at any time the operation does not seem profitable to the State of New Mexico.

This action is also subject to approval by the Oil Conservation Commission.

Enclosed herewith is Official Receipt No. J-3681 in the amount of Ten (\$10.00) Dollars which covers the filing fee.

Very truly yours,

Ted Bilberry
Ted Bilberry, Director
Oil and Gas Department

TB/ML/s
encl. 1.

STATE LAND OFFICE
SANTA FE, NEW MEXICO

RECEIVED FROM

May 6, 1969

Cabot Corporation
P.O. Box 1101
Pampa, Texas

Dollars \$

10.00

Ten and no/100

Lease No. O.&G. Unit Div.

Contract No.

Fees, Copies, Etc.	\$10.00-Application to commingle from Cabot's St. "T" and State 'U' Leases		
---------------------------	--	--	--

Miscellaneous Items.

Rental To.

Interest.

House Check.....72052

Remarks:

L

Frank J. Gurule
For Commissioner of Public Lands ✓

Fund

Amount

from Cabot's St. "T"

Maintenance

10

00

Suspense

Refunds



CABOT CORPORATION P. O. BOX 1101, PAMPA, TEXAS

CABLE ADDRESS CABLAK PAMPA
TELEPHONE MOHAWK 4-2581

May 1, 1969

Commissioner of Public Lands
State of New Mexico
P. O. Box 1148
Santa Fe, New Mexico 87501

Gentlemen:

Cabot Corporation is making application to the Oil Conservation Commission for approval of an exception to Rule 309-A to permit commingling of production from Cabot's State "T" and State "U" leases. Both wells on the State "T" lease, Nos. 1 and 2, produce from the Penn-Bough "C". The proposed No. 1 on the State "U" lease will also produce from the Penn-Bough "C" formation. These leases are in the Baum Field, Lea County, New Mexico. The purpose of making this application is to enable utilization of tankage and equipment already installed on and serving the State "T" lease.

The State "T" lease covers the southeast quarter (SE/4) of Section 32, T13S, R33E and the northwest quarter (NW/4) of Section 4, T14S, R33E. The State "U" lease covers the eastern half (E/2) of Section 4, T14S, R33E. Both leases are in Lea County, New Mexico. The State Oil and Gas Lease Numbers are K-3657 for the "T" lease and K-3846 for the "U" lease.

A plat showing the location of leases, wells, flow lines and common tankage is attached. A schematic diagram of the entire system is also attached.

This system of production, measurement and storage will result in neither a profit nor a loss to the State compared to a system of individual lease facilities.

The operating sequence is as follows:

Production from the two wells on the "T" lease (K3657) will flow to a common heater treater where the water will be removed. The stream will then be metered and will flow to the power oil tank and then to the storage tank. The proposed well on the "U" lease (K3846) will flow to its own heater treater on the lease, the stream will be measured and then flow to the common power oil tank and storage tanks. From the power oil tank individual pumps and meters will handle the oil necessary to operate the hydraulic downhole pumps

RECEIVED
MAY 5 9 45 AM '69
STATE LAND OFFICE
SANTA FE, N.M.

To: Commissioner of Public Lands

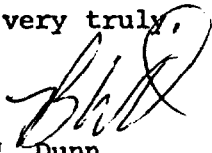
2.

in each well. In summary, the total oil stream, including produced oil and power oil, from each lease will be metered prior to storage and the power oil to each well will be metered prior to utilization at the well. A subtraction of metered power oil from metered total oil stream on an individual lease basis will result in individual lease production.

If the Commissioner of Public Lands has no objection to the granting of the exception, it is respectfully requested that you so notify the Oil Conservation Commission of your decision as soon as possible. It is requested that a copy of any letter to the Oil Conservation Commission concerning this request be forwarded to the above address.

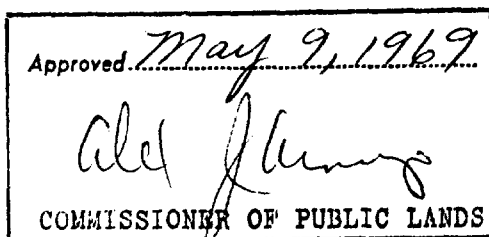
The ten dollar (\$10.00) commingling application fee is enclosed. Your cooperation in this matter is appreciated.

Yours very truly,


Bill W. Dunn
Petroleum Engineer

BWD:mn

Attachments



CABOT

CABOT CORPORATION

P. O. BOX 1101, PAMPA, TEXAS

CABLE ADDRESS: CABLAK PAMPA
TELEPHONE: MCJAWK 4-2581

MAY 1 1969

May 1, 1969

New Mexico Oil Conservation Commission
P. O. Box 2088
Santa Fe, New Mexico 87501

Gentlemen:

Cabot Corporation hereby requests administrative approval of an exception to Rule 309-A to permit commingling of production from two leases.

The requested exception is for Cabot's State "T" lease (K-3657) and State "U" lease (K-3846). The State "T" lease comprises the southeast quarter (SE/4) of Section 32, T13S, R33E and the northwest quarter (NW/4) of Section 4, T14S, R33E. The State "U" lease comprises the eastern half (E/2) of Section 4, T14S, R33E. Both leases are in Lea County.

There are two wells on the State "T" lease and a proposed well on the State "U" lease. Production in each case will be from a common source of supply, the Penn-Bough "C" formation. Production will be metered on a lease basis prior to entering common tankage, however the ownership of the leases is common throughout. The royalty owner in both instances is the State of New Mexico. Cabot has asked the State to advise the Commission of their ascent on this matter.

A schematic diagram of the proposed installation and a plat showing the leases and wells involved are attached. Also attached are copies of letters to the interest owner and the oil purchaser requesting their consent to the above application.

Your early approval of this application will be greatly appreciated.

Yours very truly,

Bill W. Dunn

Bill W. Dunn
Petroleum Engineer

BWD:mn

Attachments

*Hold for Land. Sec
Hwy 101
until 10/1/25
with 10/1/25
future
install*

*comm. property -
Leasing
and
to State
6-5-69*

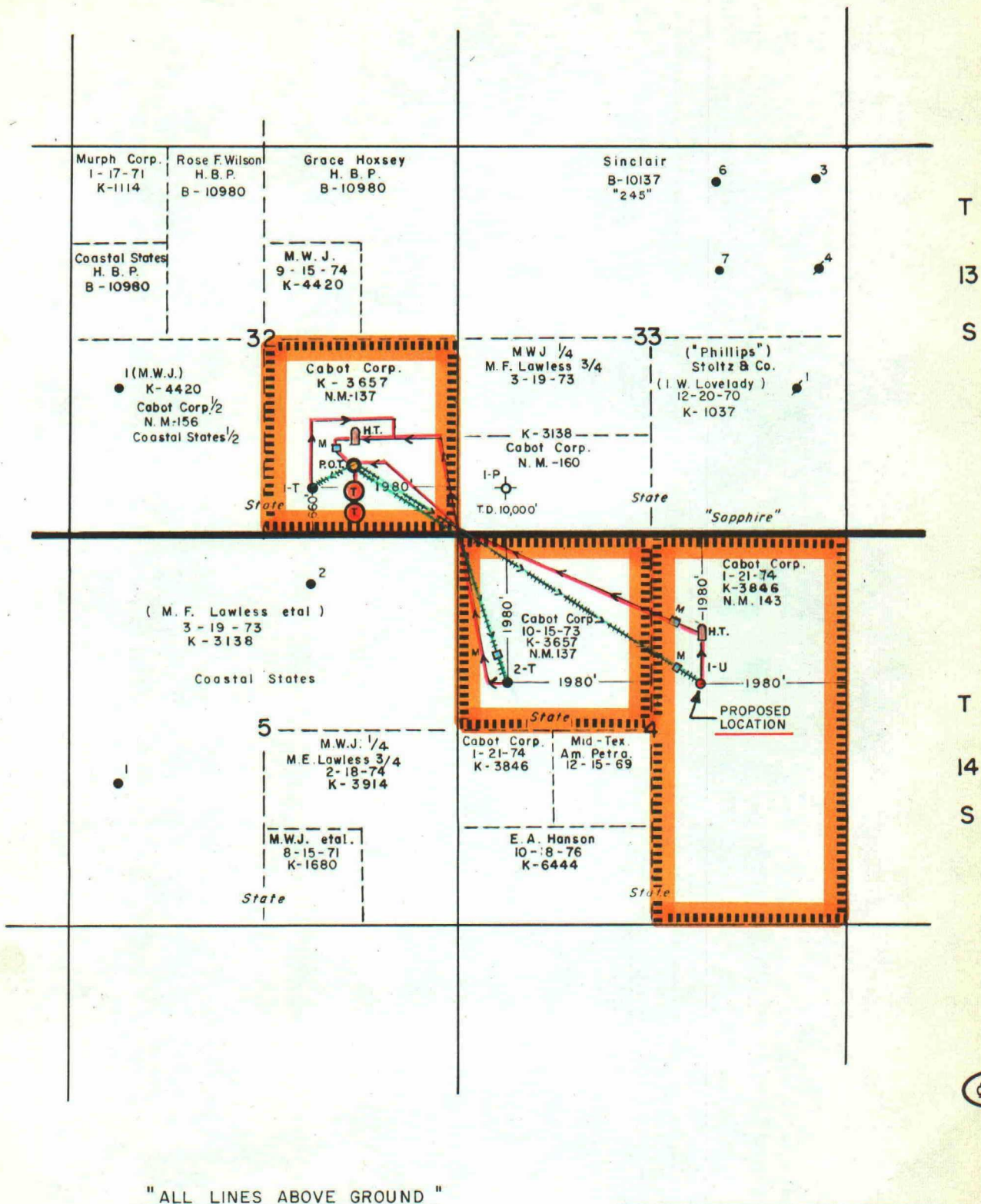


CABOT CORPORATION

STATE OF NEW MEXICO "T" LEASE
STATE OF NEW MEXICO "U" LEASE

NO SCALE 0 NO SCALE

PAMPA, TEXAS



" ALL LINES ABOVE GROUND "

SYMBOL SCHEDULE

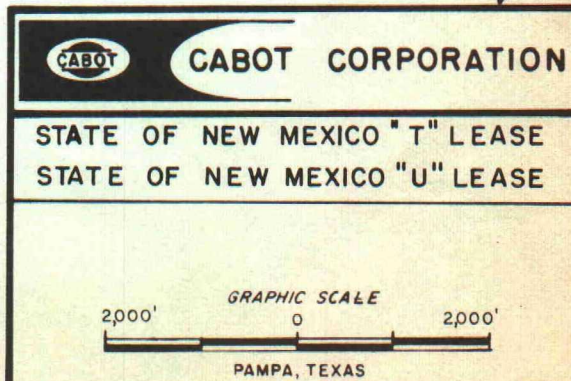
→→ TOTAL FLUID FROM
WELLS INCLUDING
POWER OIL

➡ POWER OIL FOR PUMPS

T TANK BATTERY

P.O.T. ● POWER OIL TANK

H.T. HEATER TREATER

M METER

COPY
CABOT CORPORATION
BOX 1101
PAMPA, TEXAS

May 1, 1969

Cities Service Oil Company
Cities Service Building
Bartlesville, Oklahoma 74003

Gentlemen:

Cabot Corporation is making application to the New Mexico Oil Conservation Commission for administrative approval of an exception to Rule 309-A to permit commingling of production from Cabot's State "T" and "U" leases in Lea County, New Mexico. This will involve commingling existing production from the State "T" lease with expected production from a proposed well on the State "U" lease. Commingled production will be from the Penn-Bough "C" formation in each instance.

As oil purchaser from these leases a waiver consenting to commingling in a common tank is required by the Commission. Attached for your convenience is a prepared waiver to be signed and sent to the New Mexico Oil Conservation Commission. Please return one signed copy of this waiver to this office.

Production from each lease will be metered prior to entering common tankage. A schematic diagram of the system and a plat showing lease and well locations are attached.

Your cooperation in forwarding the approved waiver to the Commission will be greatly appreciated.

Yours very truly,



Bill W. Dunn
Petroleum Engineer

BWD:mn

Attachments

[illegible][illegible]

1. The following information was obtained from the records of the
2. Department of the Interior, Bureau of Land Management, at Washington, D.C.
3. on the subject of the land grant to the State of California, and
4. is being furnished to you for your information and use.
5. The land grant was made by the President of the United States
6. on the 22nd day of March, 1850, and was for the purpose of
7. settling the claims of the State of California, and was made
8. in accordance with the provisions of the Act of Congress, approved
9. on the 22nd day of March, 1850, and is being furnished to you
10. for your information and use.

...the only way to ensure that the system will be able to handle the increased volume of work is to ensure that the system is able to handle the increased volume of work.

[illegible]

6111.0000 - 11.0000

1997年12月12日
 1997年12月12日

100

Figure 1. Schematic representation of the experimental design. The subjects were divided into two groups: the control group and the experimental group. The control group was divided into two subgroups: the control group and the experimental group. The experimental group was divided into two subgroups: the control group and the experimental group.