



~~atB~~
~~atB~~

8-2-95

4/2

July 5, 1995

New Mexico Oil Conservation Division
2040 South Pacheco
PO Box 6429
Santa Fe, NM 87505

Attn: Mr. William J. LeMay
Division Director, New Mexico Conservation Division

**Re: Exception to Rule 309-A
Administrative Approval to Lease Commingle
R. R. Sims "A" #6 and B. F. Harrison "B" sour production
Sections 4 & 9, Township 23S, Range 37E
Lea County, New Mexico**

Dear Mr. LeMay,

Texaco Exploration and Production Inc. respectfully requests administrative approval to commingle the "sour" production from the R. R. Sims "A" lease with the "sour" production from the B. F. Harrison "B" lease in an existing tank battery located in unit letter C, section 9, township 23S, range 37E.

Texaco is in preparation to drill the R. R. Sims "A" #6 well in the North Teague Lower Paddock-Blinberry Associated producing interval. Offset Paddock wells in the North Teague area indicate that the production from the R. R. Sims "A" #6 will be of a "sour" nature. NMOCD and Texas New Mexico Pipeline regulations require that "sour" production be stored in a "sour" storage facility. At this time, Texaco does not own or operate an appropriate facility on the R. R. Sims "A" lease. However, a "sour" facility is currently in operation on the B. F. Harrison "B" lease which is due South of the R. R. Sims "A" lease. Texaco proposes to route the "sour" production from the R. R. Sims "A" #6 to the "sour" battery on the B. F. Harrison "B" lease.

For further information, please see the attached objective, acreage plats, facility diagrams, facility descriptions, area maps, and lists of mineral interest owners.

All mineral interest holders have been notified of this proposal by copy of this package sent by certified mail. If you have any questions concerning this request please contact Darrell J. Carriger at (505) 397-0426. Thank you for your consideration of this proposal.

Sincerely,

Russell S. Pool
Hobbs Operating Unit Sr. Engineer

cc: NMOCD-Hobbs

DJC/s

file
chrono
Attachments

DISTRICT I
P.O. Box 1980, Hobbs, NM 88241-1980
DISTRICT II
P.O. Box Drawer DD, Artesia, NM 88211-0719
DISTRICT III
1000 Rio Brazos Rd., Aztec, NM 87410
DISTRICT IV
P.O. Box 2088, Santa Fe, NM 87504-2088

State of New Mexico
Energy, Minerals and Natural Resources Department

OIL CONSERVATION DIVISION

P.O. Box 2088
Santa Fe, New Mexico 87504-2088

Form C-102
Revised February 10, 1994
Instructions on back
Submit to Appropriate District Office
State Lease - 4 Copies
Fee Lease - 3 Copies
☐ AMENDED REPORT

WELL LOCATION AND ACREAGE DEDICATION PLAT

¹ API Number 30 025 32944	² Pool Code 96314	³ Pool Name North Teague Lower Paddock - Blinbry Associated
⁴ Property Code 11060	⁵ Property Name SIMS, R. R. 'A'	⁶ Well No. 6
⁷ OGRID Number 022351	⁸ Operator Name TEXACO EXPLORATION & PRODUCTION INC.	⁹ Elevation 3324'

¹⁰ Surface Location

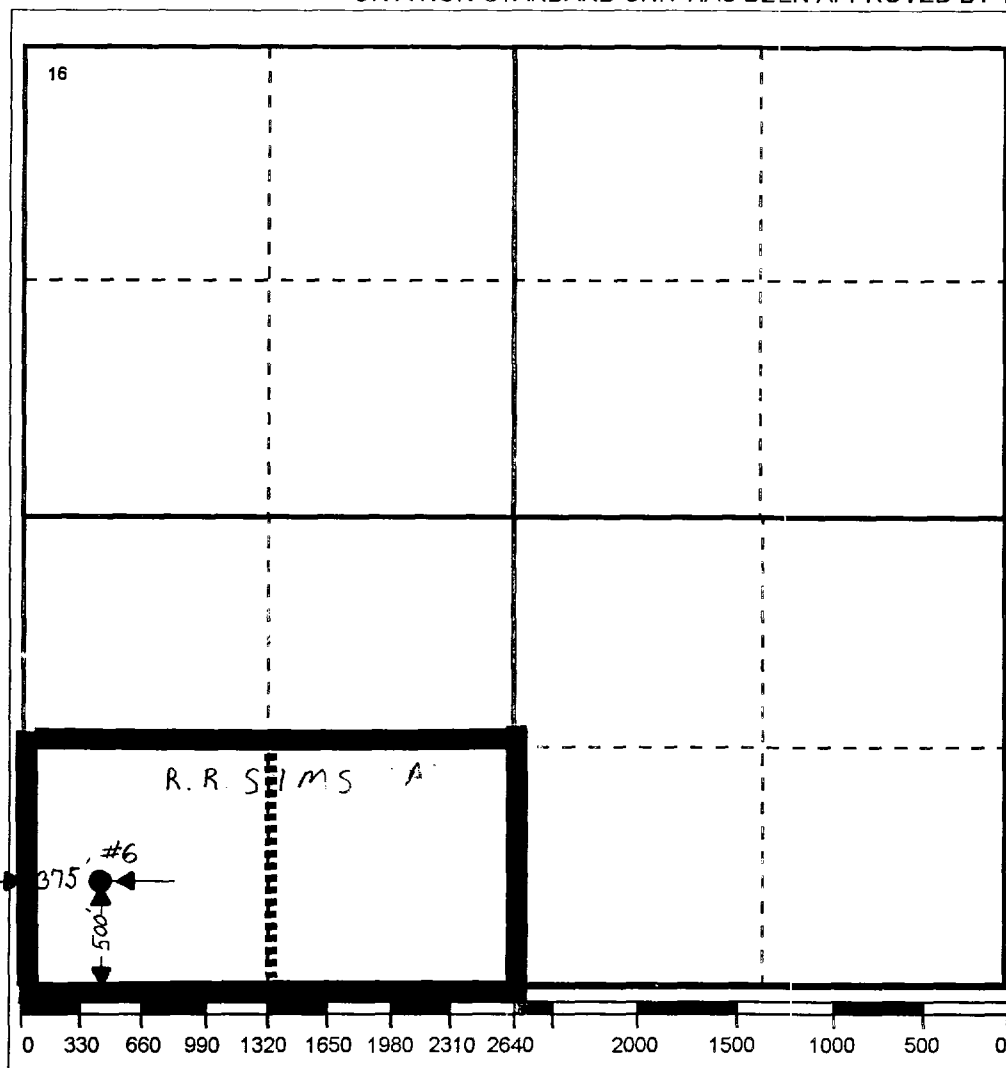
Ul or lot no.	Section	Township	Range	Lot.Idn	Feet From The	North/South Line	Feet From The	East/West Line	County
M	4	23-S	37-E		500	SOUTH	375	WEST	LEA

¹¹ Bottom Hole Location If Different From Surface

Ul or lot no.	Section	Township	Range	Lot.Idn	Feet From The	North/South Line	Feet From The	East/West Line	County

¹² Dedicated Acres 40	¹³ Joint or Infill No	¹⁴ Consolidation Code	¹⁵ Order No.
-------------------------------------	-------------------------------------	----------------------------------	-------------------------

NO ALLOWABLE WILL BE ASSIGNED TO THIS COMPLETION UNTIL ALL INTERESTS HAVE BEEN CONSOLIDATED
OR A NON-STANDARD UNIT HAS BEEN APPROVED BY THE DIVISION



17 OPERATOR CERTIFICATION I hereby certify that the information contained herein is true and complete to the best of my knowledge and belief Signature Printed Name Darrell J. Carriger Position Engineering Assistant Date 6/29/95
18 SURVEYOR CERTIFICATION I hereby certify that the well location shown on this plat was plotted from field notes of actual surveys made by me or under my supervision, and that the same is true and correct to the best of my knowledge and belief. Date Surveyed Signature & Seal of Professional Surveyor Certificate No.

DISTRICT I

P.O. Box 1980, Hobbs, NM 88241-1980

DISTRICT II

P.O. Box Drawer DD, Artesia, NM 88211-0719

DISTRICT III

1000 Rio Brazos Rd., Aztec, NM 87410

DISTRICT IV

P.O. Box 2088, Santa Fe, NM 87504-2088

State of New Mexico

Energy, Minerals and Natural Resources Department

Form C-102

Revised February 10, 1994

Instructions on back

Submit to Appropriate District Office

State Lease - 4 Copies

Fee Lease - 3 Copies

☐ AMENDED REPORT

OIL CONSERVATION DIVISION

P.O. Box 2088

Santa Fe, New Mexico 87504-2088

WELL LOCATION AND ACREAGE DEDICATION PLAT

¹ API Number 3002531955	² Pool Code 96314	³ Pool Name North Teague Lower Paddock - Blinbry Associated
⁴ Property Code 10960	⁵ Property Name HARRISON, B. F. - B -	⁶ Well No. 8
⁷ OGRID Number 022351	⁸ Operator Name TEXACO EXPLORATION & PRODUCTION INC.	⁹ Elevation GR-3317', KB-3329'

¹⁰ Surface Location

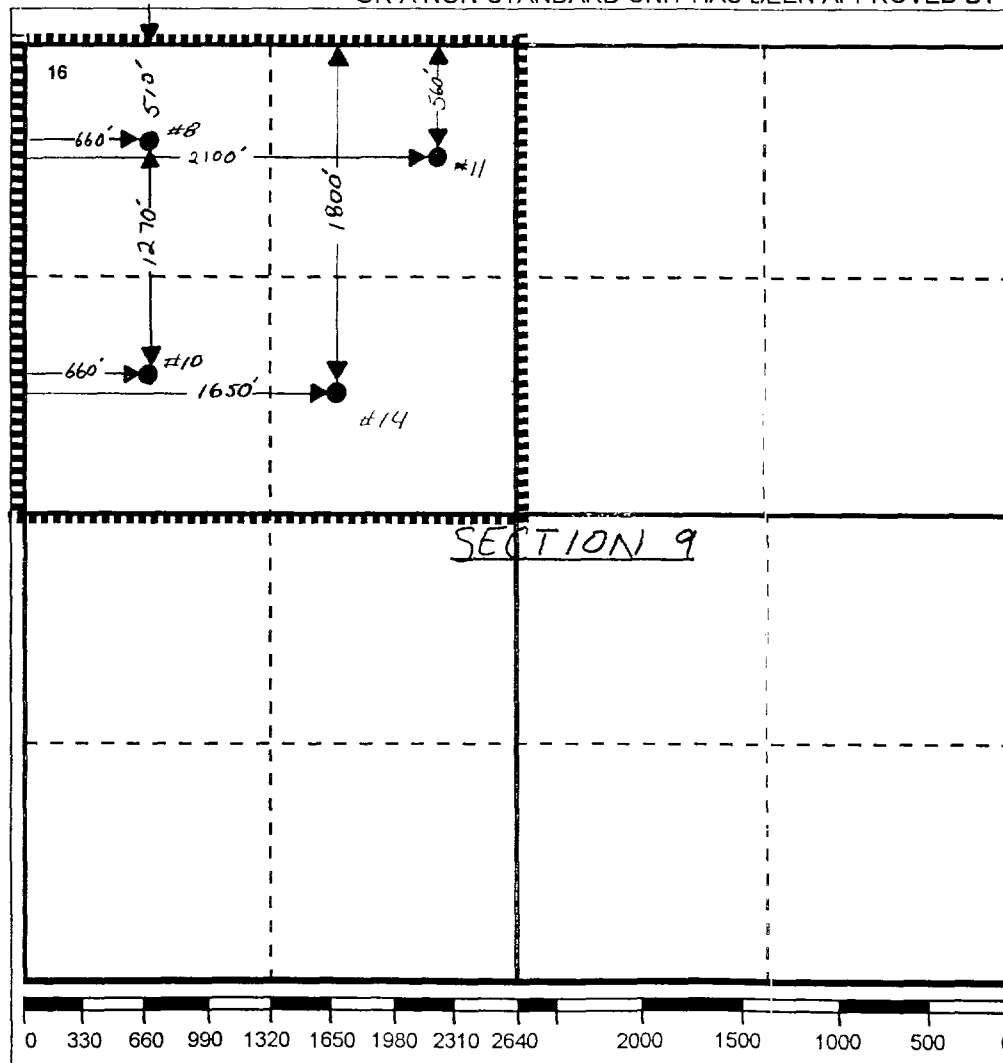
Ul or lot no.	Section	Township	Range	Lot.Idn	Feet From The	North/South Line	Feet From The	East/West Line	County
D	9	23-SO	37-EA		510	NORTH	660	WEST	LEA

¹¹ Bottom Hole Location If Different From Surface

Ul or lot no.	Section	Township	Range	Lot.Idn	Feet From The	North/South Line	Feet From The	East/West Line	County

¹² Dedicated Acres 40	¹³ Joint or Infill No	¹⁴ Consolidation Code	¹⁵ Order No.
-------------------------------------	-------------------------------------	----------------------------------	-------------------------

NO ALLOWABLE WILL BE ASSIGNED TO THIS COMPLETION UNTIL ALL INTERESTS HAVE BEEN CONSOLIDATED
OR A NON-STANDARD UNIT HAS BEEN APPROVED BY THE DIVISION



17 OPERATOR CERTIFICATION

I hereby certify that the information
contained herein is true and complete to the
best of my knowledge and belief

Signature

Printed Name

Darrell J. Carriger

Position

Engineering Assistant

Date

6/29/95

18 SURVEYOR CERTIFICATION

I hereby certify that the well location shown
on this plat was plotted from field notes of
actual surveys made by me or under my
supervision, and that the same is true and
correct to the best of my knowledge and
belief.

Date Surveyed

Signature & Seal of
Professional Surveyor

Certificate No.

DISTRICT I
P.O. Box 1980, Hobbs, NM 88241-1980
DISTRICT II
P.O. Box Drawer DD, Artesia, NM 88211-0719
DISTRICT III
1000 Rio Brazos Rd., Aztec, NM 87410
DISTRICT IV
P.O. Box 2088, Santa Fe, NM 87504-2088

State of New Mexico
Energy, Minerals and Natural Resources Department

OIL CONSERVATION DIVISION

P.O. Box 2088
Santa Fe, New Mexico 87504-2088

Form C-102
Revised February 10, 1994
Instructions on back
Submit to Appropriate District Office
State Lease - 4 Copies
Fee Lease - 3 Copies
☐ AMENDED REPORT

WELL LOCATION AND ACREAGE DEDICATION PLAT

¹ API Number 3002532106	² Pool Code 96314	³ Pool Name North Teague Lower Paddock - Blinbry Associated
⁴ Property Code 10960	⁵ Property Name HARRISON, B. F. - B -	⁶ Well No. 10
⁷ OGRID Number 022351	⁸ Operator Name TEXACO EXPLORATION & PRODUCTION INC.	⁹ Elevation GR-3317, KB-3330

¹⁰ Surface Location

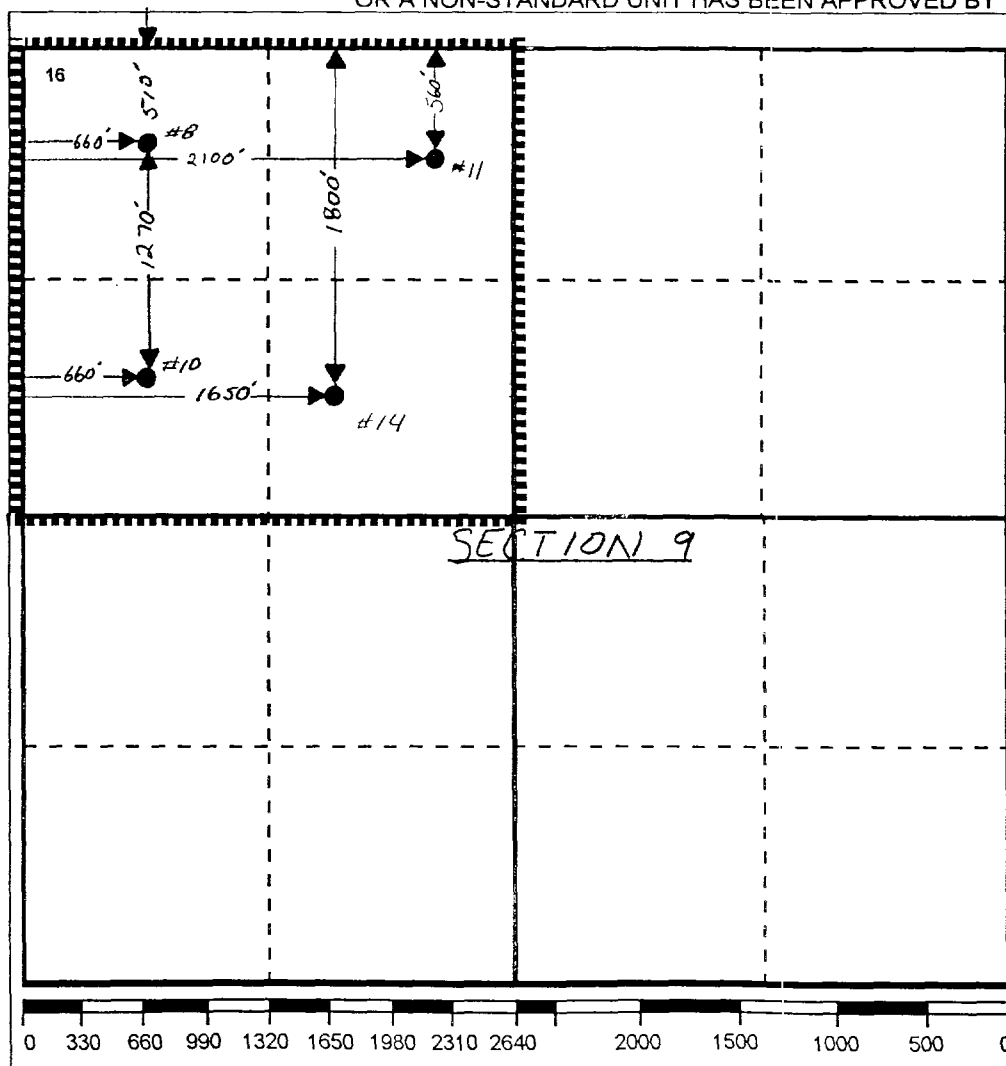
UI or lot no. E	Section 9	Township 23-S	Range 37-E	Lot.Idn	Feet From The 1780	North/South Line N	Feet From The 660	East/West Line WEST	County LEA
--------------------	--------------	------------------	---------------	---------	-----------------------	-----------------------	----------------------	------------------------	---------------

¹¹ Bottom Hole Location If Different From Surface

UI or lot no.	Section	Township	Range	Lot.Idn	Feet From The	North/South Line	Feet From The	East/West Line	County
---------------	---------	----------	-------	---------	---------------	------------------	---------------	----------------	--------

¹² Dedicated Acres 40	¹³ Joint or Infill No	¹⁴ Consolidation Code	¹⁵ Order No.
-------------------------------------	-------------------------------------	----------------------------------	-------------------------

NO ALLOWABLE WILL BE ASSIGNED TO THIS COMPLETION UNTIL ALL INTERESTS HAVE BEEN CONSOLIDATED
OR A NON-STANDARD UNIT HAS BEEN APPROVED BY THE DIVISION



17 OPERATOR CERTIFICATION

I hereby certify that the information
contained herein is true and complete to the
best of my knowledge and belief

Signature

Printed Name

Darrell J. Carriger

Position

Engineering Assistant

Date

6/29/95

18 SURVEYOR CERTIFICATION

I hereby certify that the well location shown
on this plat was plotted from field notes of
actual surveys made by me or under my
supervision, and that the same is true and
correct to the best of my knowledge and
belief.

Date Surveyed

Signature & Seal of
Professional Surveyor

Certificate No.

DISTRICT I
P.O. Box 1980, Hobbs, NM 88241-1980
DISTRICT II
P.O. Box Drawer DD, Artesia, NM 88211-0719
DISTRICT III
1000 Rio Brazos Rd., Aztec, NM 87410
DISTRICT IV
P.O. Box 2088, Santa Fe, NM 87504-2088

State of New Mexico
Energy, Minerals and Natural Resources Department

OIL CONSERVATION DIVISION

P.O. Box 2088
Santa Fe, New Mexico 87504-2088

Form C-102
Revised February 10, 1994
Instructions on back
Submit to Appropriate District Office
State Lease - 4 Copies
Fee Lease - 3 Copies
☐ AMENDED REPORT

WELL LOCATION AND ACREAGE DEDICATION PLAT

¹ API Number 30 025 32107	² Pool Code 96314	³ Pool Name North Teague Lower Paddock - Blinbry Associated
⁴ Property Code 10960	⁵ Property Name HARRISON, B. F. - B -	⁶ Well No. 11
⁷ OGRID Number 022351	⁸ Operator Name TEXACO EXPLORATION & PRODUCTION INC.	⁹ Elevation GR-3312', KB-3326'

¹⁰ Surface Location

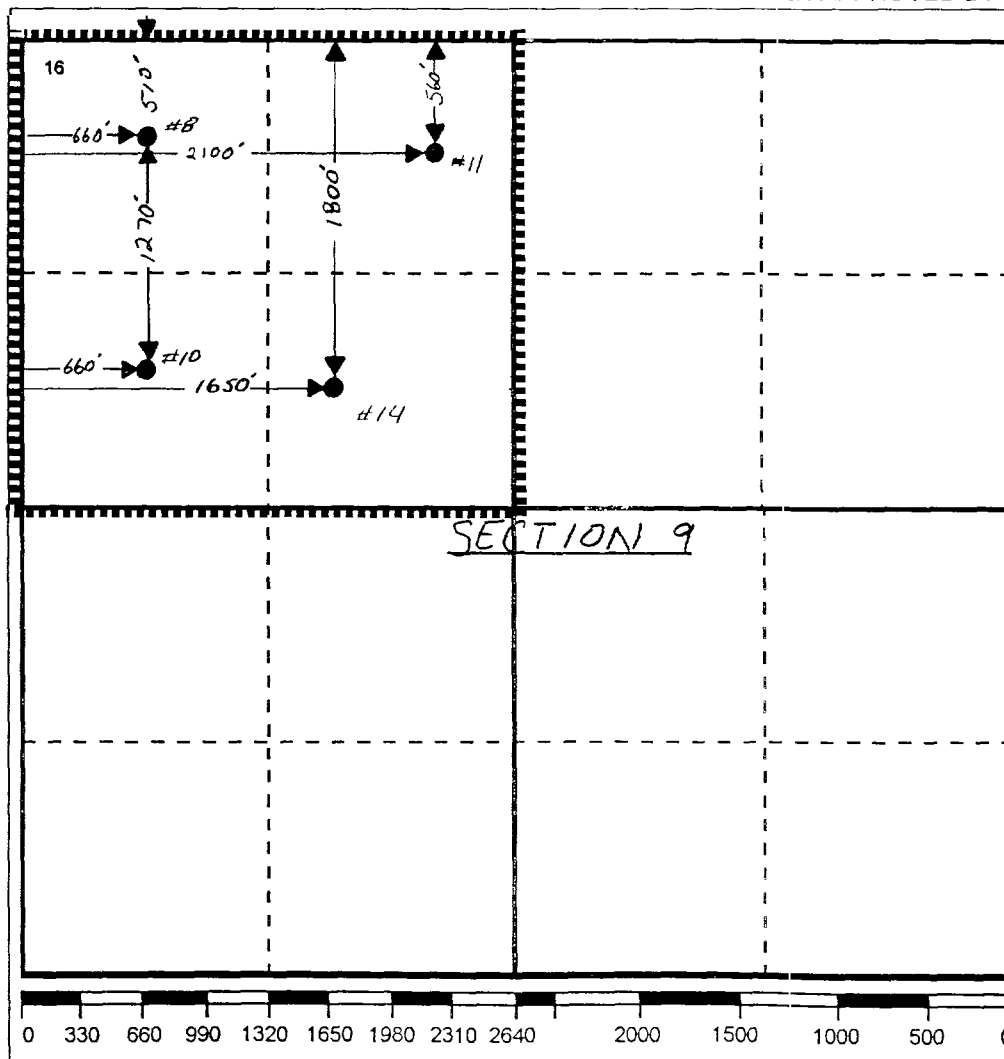
Ul or lot no.	Section	Township	Range	Lot.Idn	Feet From The	North/South Line	Feet From The	East/West Line	County
C	9	23-S	37-E		560	N	2100	W	LEA

¹¹ Bottom Hole Location If Different From Surface

Ul or lot no.	Section	Township	Range	Lot.Idn	Feet From The	North/South Line	Feet From The	East/West Line	County

¹² Dedicated Acres 40	¹³ Joint or Infill No	¹⁴ Consolidation Code	¹⁵ Order No.
-------------------------------------	-------------------------------------	----------------------------------	-------------------------

NO ALLOWABLE WILL BE ASSIGNED TO THIS COMPLETION UNTIL ALL INTERESTS HAVE BEEN CONSOLIDATED
OR A NON-STANDARD UNIT HAS BEEN APPROVED BY THE DIVISION



¹⁷ OPERATOR CERTIFICATION I hereby certify that the information contained herein is true and complete to the best of my knowledge and belief Signature: <i>[Signature]</i> Printed Name: Darrell J. Carriger Position: Engineering Assistant Date: 6/29/95
¹⁸ SURVEYOR CERTIFICATION I hereby certify that the well location shown on this plat was plotted from field notes of actual surveys made by me or under my supervision, and that the same is true and correct to the best of my knowledge and belief. Date Surveyed: Signature & Seal of Professional Surveyor: Certificate No.:

DISTRICT I
P.O. Box 1980, Hobbs, NM 88241-1980
DISTRICT II
P.O. Box Drawer DD, Artesia, NM 88211-0719
DISTRICT III
1000 Rio Brazos Rd., Aztec, NM 87410
DISTRICT IV
P.O. Box 2088, Santa Fe, NM 87504-2088

State of New Mexico
Energy, Minerals and Natural Resources Department

OIL CONSERVATION DIVISION

P.O. Box 2088
Santa Fe, New Mexico 87504-2088

Form C-102
Revised February 10, 1994
Instructions on back
Submit to Appropriate District Office
State Lease - 4 Copies
Fee Lease - 3 Copies
☐ AMENDED REPORT

WELL LOCATION AND ACREAGE DEDICATION PLAT

¹ API Number 30 025 32173	² Pool Code 96314	³ Pool Name North Teague Lower Paddock - Blinbry Associated
⁴ Property Code 10960	⁵ Property Name HARRISON, BF B	⁶ Well No. 14
⁷ OGRID Number 022351	⁸ Operator Name TEXACO EXPLORATION & PRODUCTION INC.	⁹ Elevation GR-3314', KB-3328'

¹⁰ Surface Location

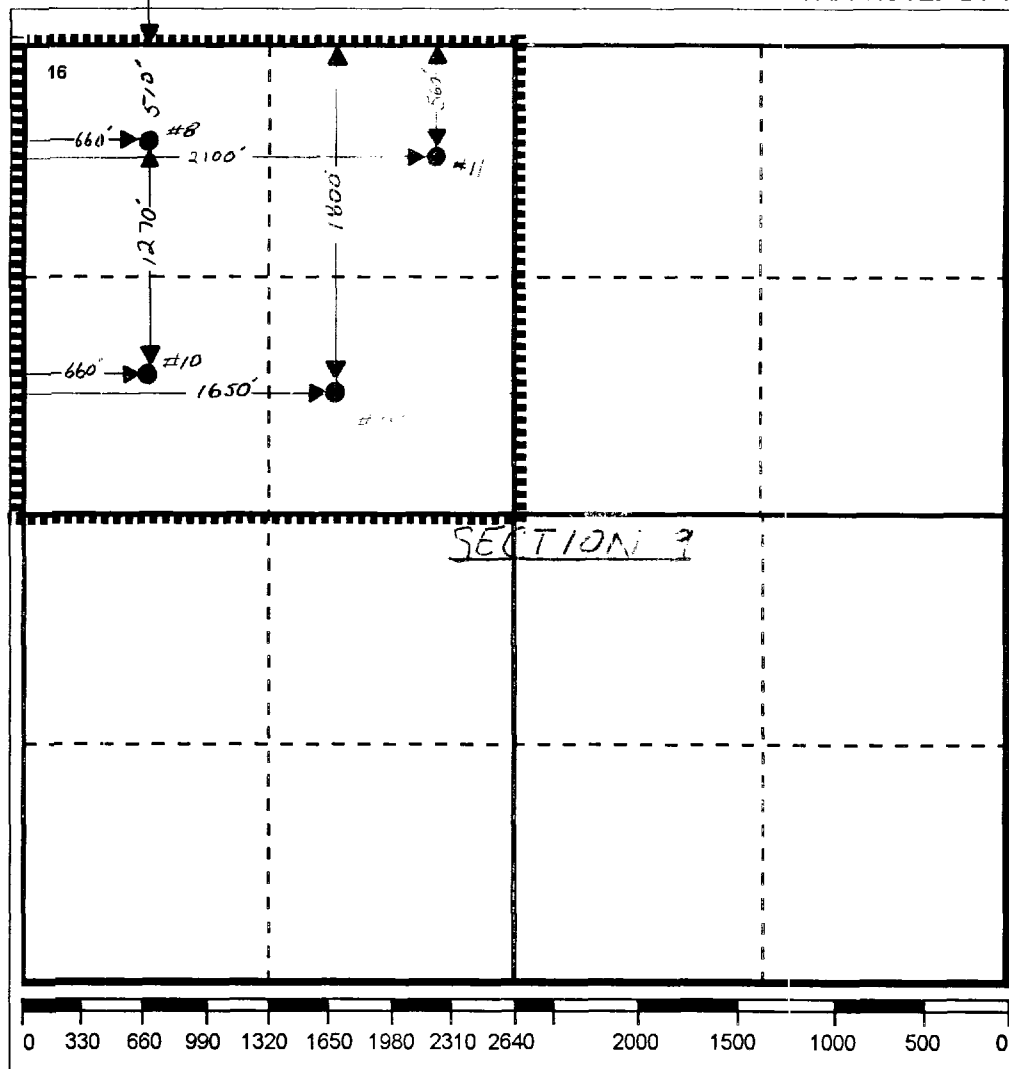
UI or lot no.	Section	Township	Range	Lot.Idn	Feet From The	North/South Line	Feet From The	East/West Line	County
F	9	23S	37E		1800	N	1650	W	LEA

¹¹ Bottom Hole Location If Different From Surface

UI or lot no.	Section	Township	Range	Lot.Idn	Feet From The	North/South Line	Feet From The	East/West Line	County

¹² Dedicated Acres 40	¹³ Joint or Infill No	¹⁴ Consolidation Code	¹⁵ Order No.
-------------------------------------	-------------------------------------	----------------------------------	-------------------------

NO ALLOWABLE WILL BE ASSIGNED TO THIS COMPLETION UNTIL ALL INTERESTS HAVE BEEN CONSOLIDATED
OR A NON-STANDARD UNIT HAS BEEN APPROVED BY THE DIVISION



17 OPERATOR CERTIFICATION I hereby certify that the information contained herein is true and complete to the best of my knowledge and belief. Signature <i>[Signature]</i> Printed Name Darrell J. Carriger Position Engineering Assistant Date 6/29/95
18 SURVEYOR CERTIFICATION I hereby certify that the well location shown on this plat was plotted from field notes of actual surveys made by me or under my supervision, and that the same is true and correct to the best of my knowledge and belief. Date Surveyed Signature & Seal of Professional Surveyor Certificate No.

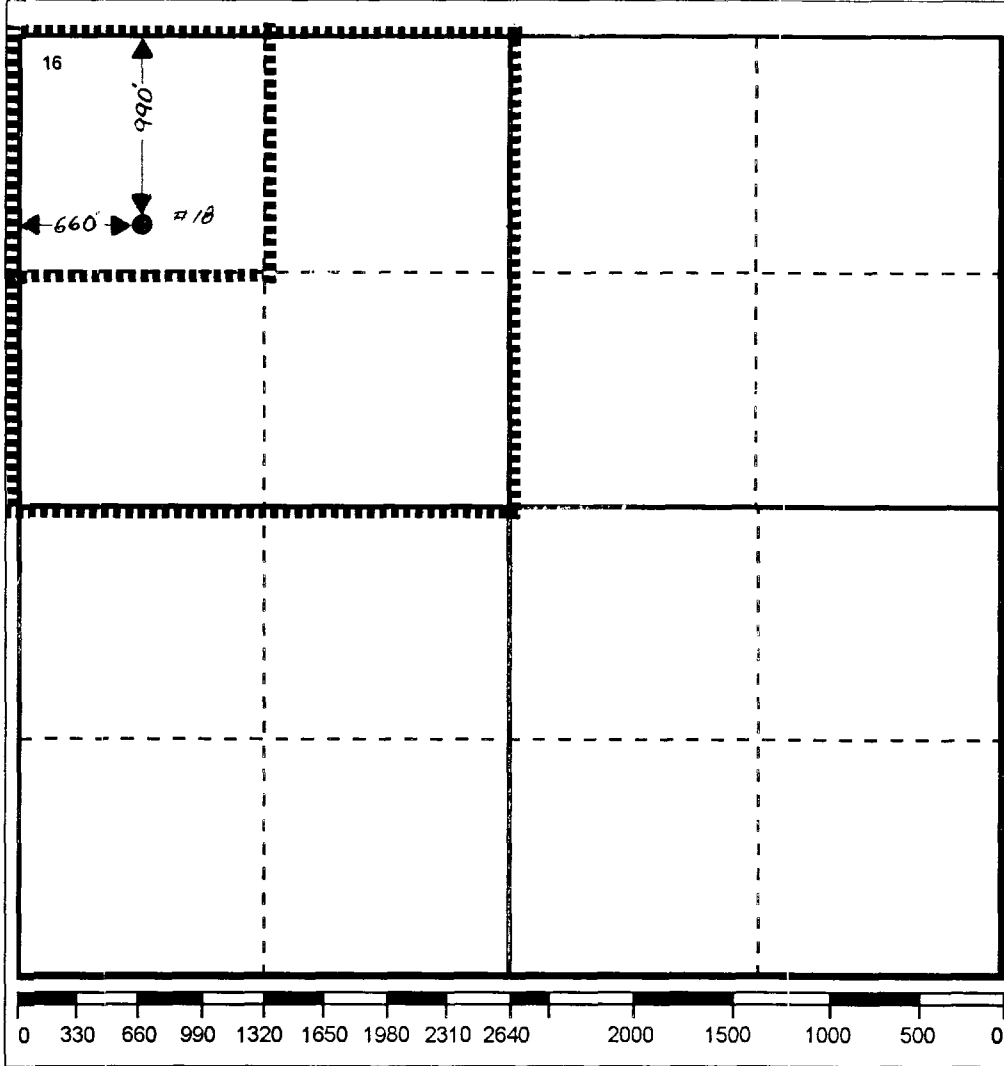
WELL LOCATION AND ACREAGE DEDICATION PLAT

¹ API Number 30 025 32159	² Pool Code 96197	³ Pool Name NORTH TEAGUE SAN ANDRES
⁴ Property Code 10960	⁵ Property Name HARRISON, B. F. - B -	⁶ Well No. 18
⁷ OGRID Number 022351	⁸ Operator Name TEXACO EXPLORATION & PRODUCTION INC.	⁹ Elevation GR-3319', KB-3331'

¹⁰ Surface Location									
Ul or lot no. D	Section 9	Township 23-SO	Range 37-EA	Lot.Idn	Feet From The 990	North/South Line NORTH	Feet From The 660	East/West Line WEST	County LEA

¹¹ Bottom Hole Location If Different From Surface									
Ul or lot no.	Section	Township	Range	Lot.Idn	Feet From The	North/South Line	Feet From The	East/West Line	County
¹² Dedicated Acres 40	¹³ Joint or Infill No	¹⁴ Consolidation Code	¹⁵ Order No.						

NO ALLOWABLE WILL BE ASSIGNED TO THIS COMPLETION UNTIL ALL INTERESTS HAVE BEEN CONSOLIDATED OR A NON-STANDARD UNIT HAS BEEN APPROVED BY THE DIVISION



17 OPERATOR CERTIFICATION
I hereby certify that the information contained herein is true and complete to the best of my knowledge and belief
Signature: *[Signature]*
Printed Name: Darrell J. Carriger
Position: Engineering Assistant
Date: 6/29/95

18 SURVEYOR CERTIFICATION
I hereby certify that the well location shown on this plat was plotted from field notes of actual surveys made by me or under my supervision, and that the same is true and correct to the best of my knowledge and belief.
Date Surveyed:
Signature & Seal of Professional Surveyor:
Certificate No.:

Lease Commingling

Objective:

Texaco is currently in preparation to drill the R. R. Sims "A" #6 well in the North Teague Lower Paddock - Blinbry Associated pool. The subject well will be located in Unit Letter M, Section 4, Township 23S, Range 37E. An analysis of offset Paddock wells in the North Teague area indicates that the new well will have an initial potential test of approximately 100 BOPD and 30 MCFPD of "sour" production.

"Sour" oil has a high content of hydrogen sulfide which reduces its overall per barrel value. New Mexico Oil Conservation Division (NMOCD) and the Texas New Mexico Pipeline regulations require Texaco to produce the "sour" production from the new well into a "sour" battery or storage facility.

At this time, Texaco does not have the appropriate facility to store the "sour" production on the R. R. Sims "A" lease. However, due South of the R. R. Sims "A" lease, is the B. F. Harrison "B" lease, which is currently occupied by a "sour" tank battery which Texaco operates (please see figure 1 and 2 for a map of the area).

In an effort to minimize costs, Texaco proposes to route the "sour" production from the R. R. Sims "A" #6 well to the "sour" battery located on the B. F. Harrison "B" lease. This proposal would eliminate the need to construct another "sour" battery (approximate construction cost is \$100,000) directly across the lease line from one currently in operation. It is Texaco's contention that the overall accuracy of the hydrocarbon gauging will meet and surpass standard hand gauging methods used in typical oil custody transfers.

Figure 1. Area map of R. R. Sims "A" & B. F. Harrison "B" leases

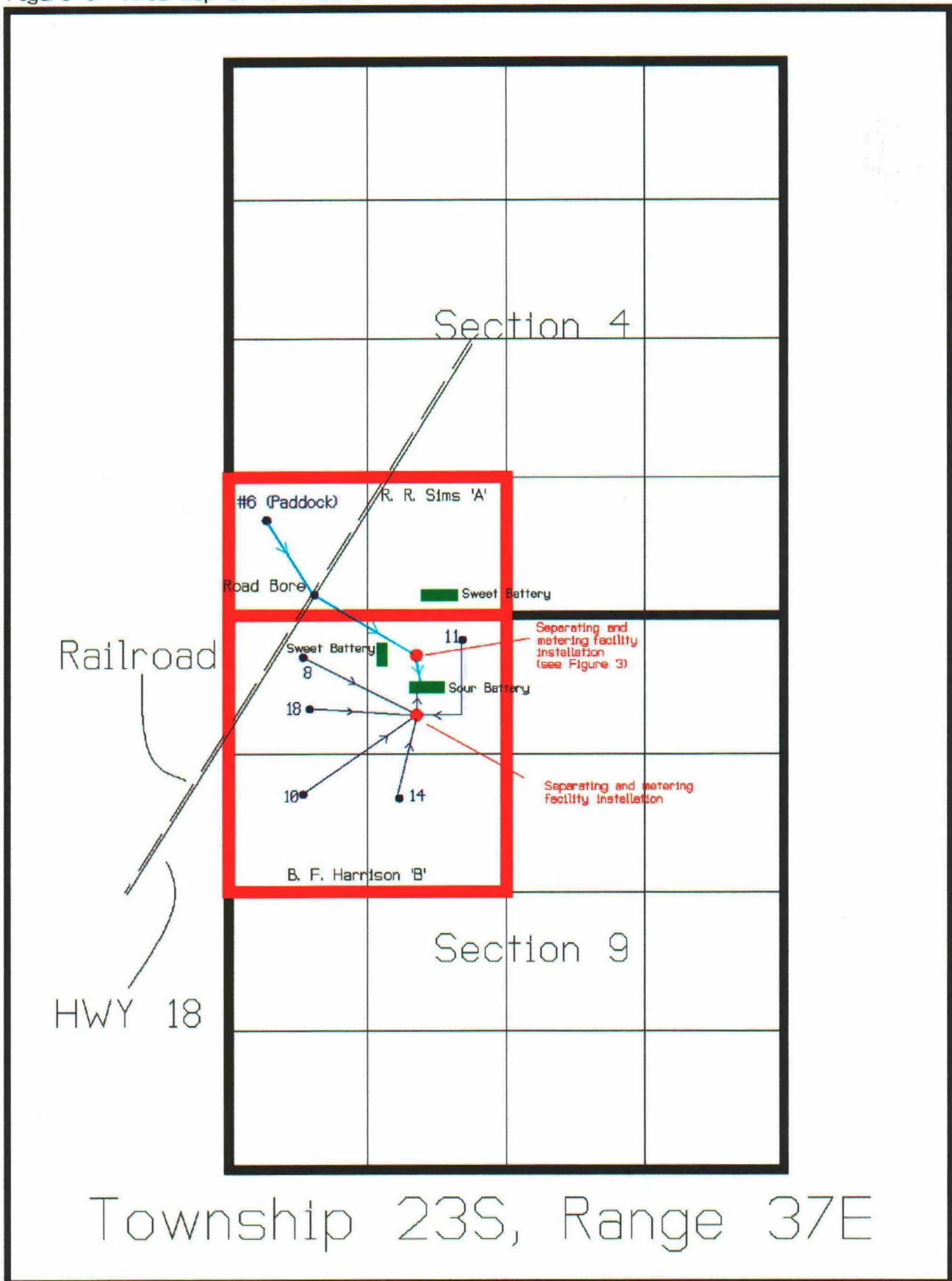
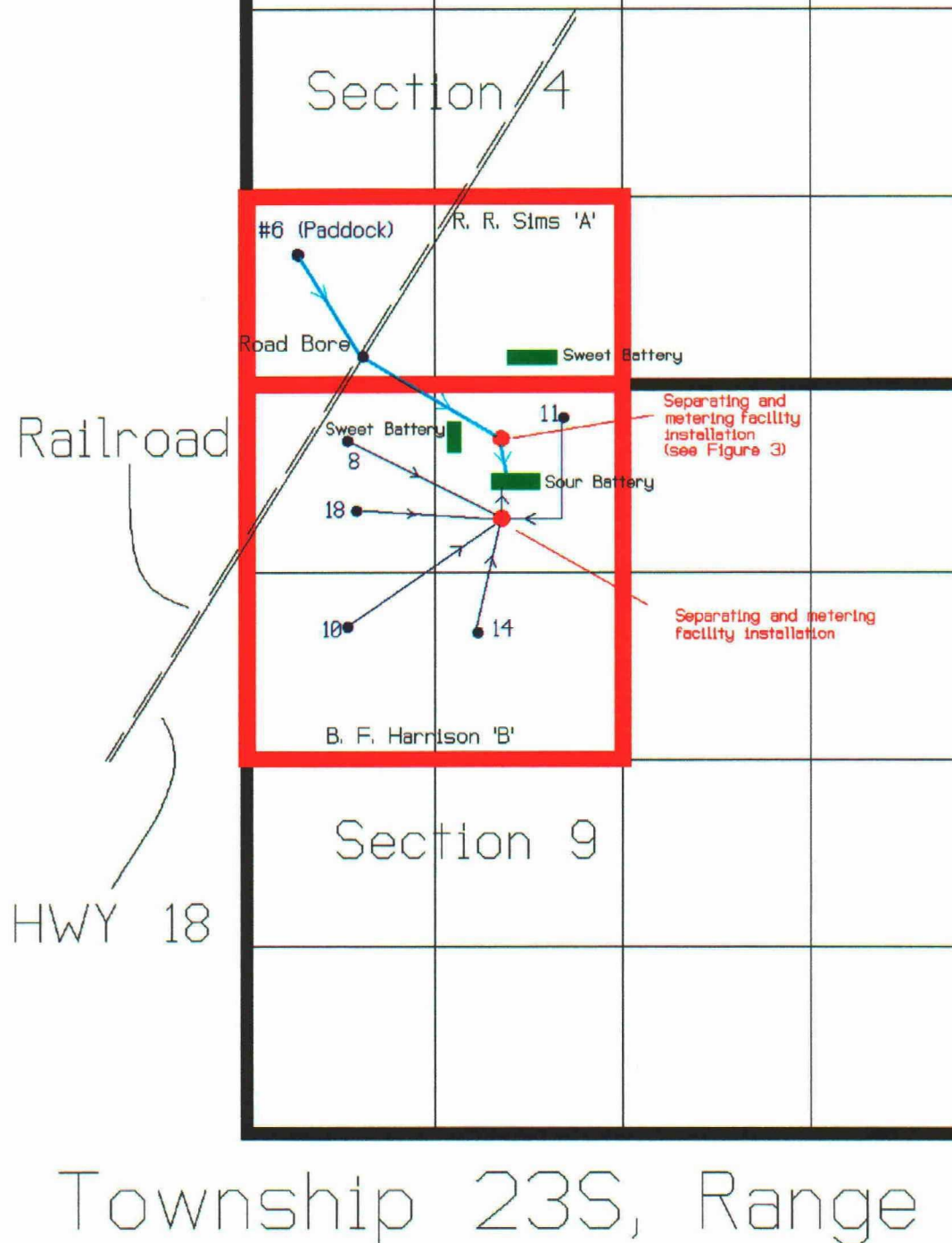


Figure 2



Facilities to Lease Commingle: Please see figures 3 and 4 for schematics of the installation and layout of lease commingling facilities.

Texaco believes that the following proposed facility installation will provide a fail-safe means to accurately measure produced hydrocarbons from the R. R. Sims "A" #6 well. This installation is designed for increased accuracy above and beyond the minimum requirements outlined in the "Manual for the Installation and Operation of Commingling Facilities" published by the NMOCD.

Please note that the facility installation depicted in figure 3 is merely a proposal. Texaco will modify this proposed installation to the mineral interest owners satisfaction if lease commingling is approved.

Description of facilities:

3-Phase Separator: The 3-phase separator is a facility used to separate produced fluids into oil, gas, and water. This separator will be equipped with a high pressure alarm that will alert Texaco personnel of meter malfunctions.

Halliburton Gas Meter: This "turbine" meter determines flow rate by measuring the rotational movement of an impeller that is suspended in the flow area. This meter will measure the flow of natural gas with an accuracy of +/- .5% and is commonly used in the oil and gas industry.

Strainer and air eliminator: This device captures miscellaneous debris in the flow line that might cause malfunctions in the metering system and also eliminates gas from the flow line that could cause errors in the measurement of fluids. The strainer will be maintained on a regular basis.

Proving Loop: The proving loop provides a means for Texaco to install a calibrated meter in the flow line to check or "prove" the accuracy of the metering system in operation. Texaco will prove the accuracy of the metering system on a monthly basis.

Primary Positive Displacement Meter (PDM): A positive displacement meter measures the flow of oil by isolating flow into volumetric segments and then counting the individual segments. This meter is advantageous to typical turbine meters because of its ability to accurately measure flow over a wider range of flow rates (especially low flow rates). The PDM can also maintain accurate metering of fluids in the presence of paraffin or other extremely viscous fluids. In the event that the "displacing" mechanism within the meter freezes or sticks, the PDM by design will almost completely shut-off fluid flow. This meter will be

equipped with a non-reset counter and will be read **at all times** except in the case of a malfunction.

Secondary Positive Displacement Meter (redundant): The same meter as described above. The secondary PDM will be placed down-line (in series) from the primary PDM. The secondary PDM's measurement will **only be read** in the event that the primary PDM has malfunctioned and supplied inaccurate measurements.

Dump Valve: The dump valve is a device used to maintain constant separator pressure.

Scrubber: The scrubber is the last vessel through which gas flows before it enters the sales line. The scrubber is designed for emergency situations when it becomes necessary to remove excess fluid from the gas stream before it enters the sales line. The scrubber will be equipped with a dump indicator switch which will alert Texaco employees of fluid being "dumped" to the battery from the scrubber.

Figure 4. Overhead view of lease commingling facilities

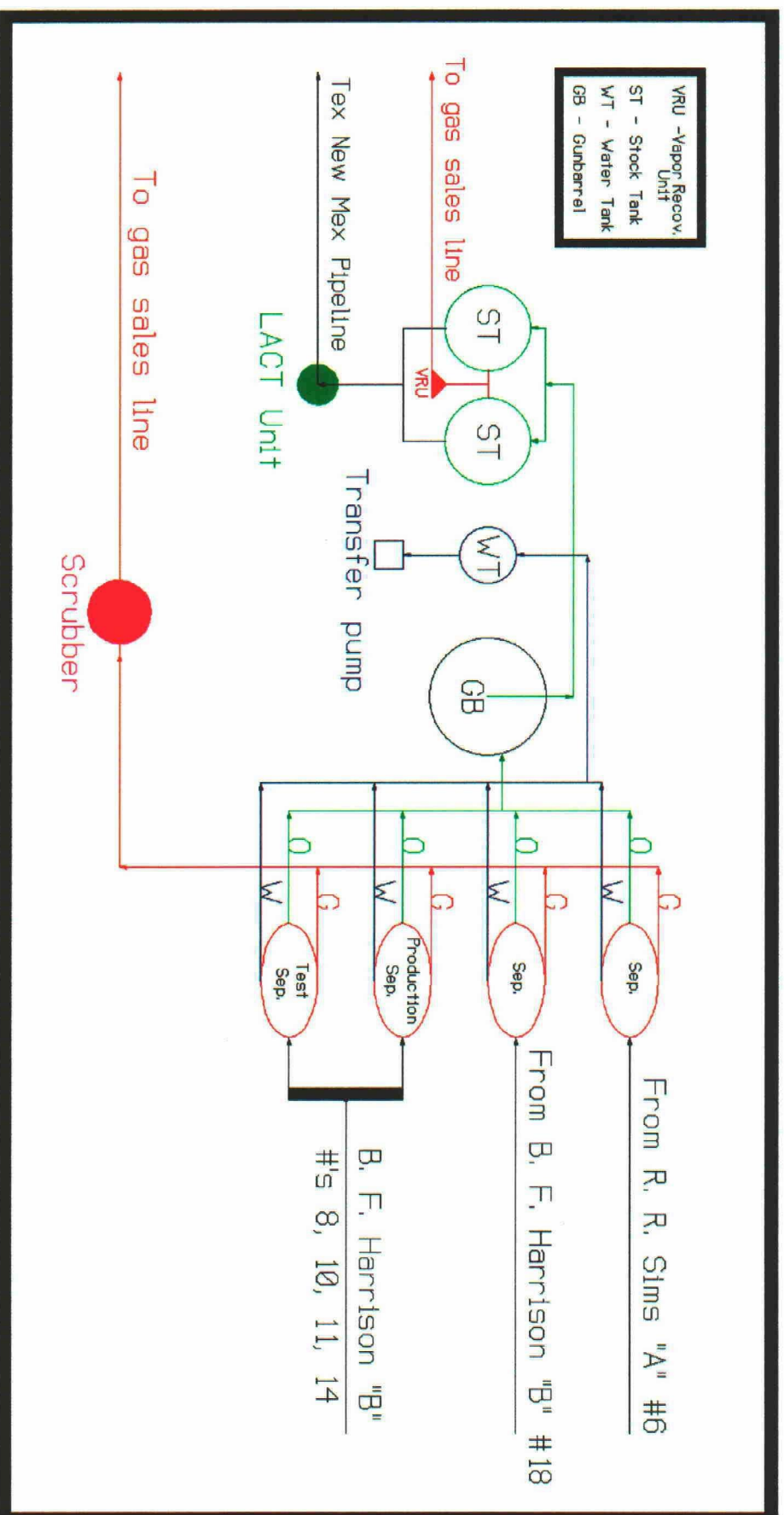
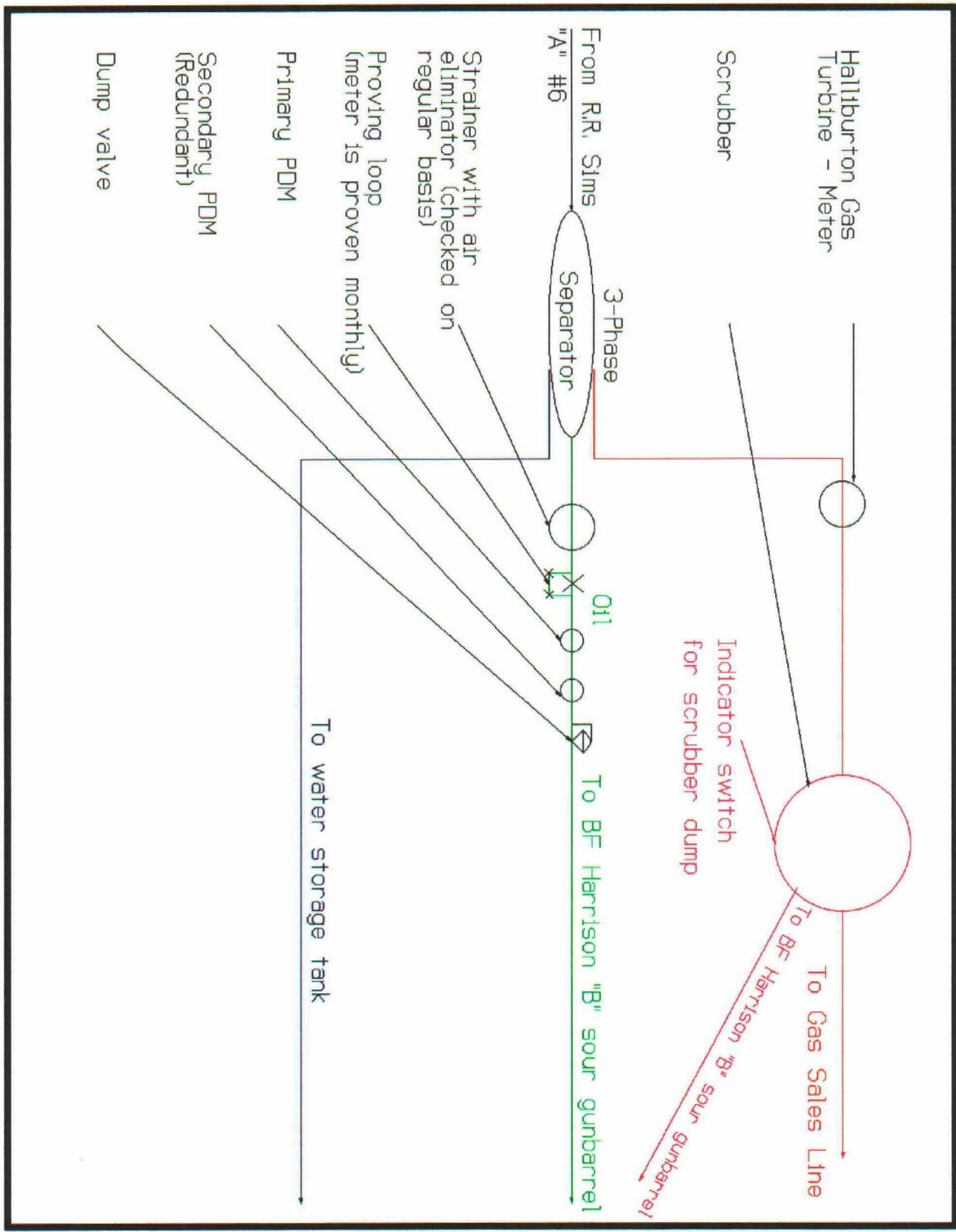


Figure 3. Proposed facility installation



B. F. Harrison "B" Mineral Interest Owners

Amerada Hess Corp.
PO Box 201544
Houston, TX 77216

Michael Alan Huntington
433 South 7th Street
PO Box 1051
Jal, NM 88252

Jerry Ann Wynn
RT. 1 Box 364
Broadway, VA 22815

Cynthia Mart Spillar
25918 Lake Lawn Drive
Spring, TX 77380

Linda Kay Winter
3414 Ann Arbor
Houston, TX 77063

John P. Stone
303 Noth Oak
Stanton, TX 79782

Nancee Gay Stephens
312 Northwood Dr.
Mckinney, TX 75070

Benny Lynn Stone
PO Box 667
Stanton, TX 79782

Verna Jean Jinkins
PO Box 237
Socorro, NM 87801

Dallas, TX 75284

R. R. Sims "A" Mineral Interest Owners

Alex Singer Royalty Trust 1
Dept. 130
Tulsa, OK 74182

Jewell Ellen Griffin
HC 68 Box 860
Kingston, OK 73439

Carl O. Griffin
HC 68 Box 860
Kingston, OK 73439

R. D. Sims
PO Box 922
Eunice, NM 88231

Floyd Raleigh Griffin
HC 68 Box 860
Kingston, OK 73439

Dorothy J. Gregory
PO Box 132
Eunice, NM 88231

Minnie Belle Hedgpeth
PO Box 1045
Jal, NM 88252

Fay Ruth Parrish
5007 Chapel Hill
Midland, TX 79705

Thelma May Cooper
PO Box 72
Jal, NM 88252

Sabine Royalty Trust Nations Bank Texas NA
SUC TR & Escrow Agent
Department 0887
Dallas, TX 75284

Z 106 611 717



**Receipt for
Certified Mail**

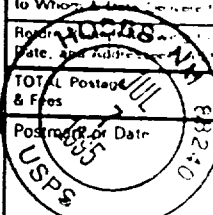
No Insurance Coverage Provided
Do not use for International Mail
(See Reverse)

Nancee Gay Stephens
312 Northwood Drive
Mckinney, Texas 75070

Postage	\$ L
Certified Fee	L
Special Delivery Fee	
Restricted Delivery Fee	
Return Receipt (Mailing to Whom Addressed)	L
Read Instructions on Reverse for Date and Address	
TOTAL Postage & Fees	\$

Postmark or Date

PS Form 3800, March 1993



Z 106 611 770

**Receipt for
Certified Mail**No Insurance Coverage Provided
Do not use for International Mail
(See Reverse)

Sent to PO Box 755	
City, State, and ZIP Code Pulaski, OK 74101	
P.O., State and ZIP Code	
Postage	\$ <input checked="" type="checkbox"/>
Certified Fee	<input checked="" type="checkbox"/>
Special Delivery Fee	
Restricted Delivery Fee	
Return Receipt Showing to Whom & Date Delivered	
Return Receipt Showing to Whom, Date, and Addressee's Address	
TOTAL Postage & Fees	
Postmark or Date	

PS Form 3800, March 1993

Z 106 611 779

**Receipt for
Certified Mail**No Insurance Coverage Provided
Do not use for International Mail
(See Reverse)

Sent to PO Box 830650	
City, State, and ZIP Code Dallas, TX 75283	
P.O., State and ZIP Code	
Postage	\$ <input checked="" type="checkbox"/>
Certified Fee	<input checked="" type="checkbox"/>
Special Delivery Fee	
Restricted Delivery Fee	
Return Receipt Showing to Whom & Date Delivered	
Return Receipt Showing to Whom, Date, and Addressee's Address	
TOTAL Postage & Fees	
Postmark or Date	

PS Form 3800, March 1993

Z 106 611 777

**Receipt for
Certified Mail**No Insurance Coverage Provided
Do not use for International Mail
(See Reverse)

Sent to Carl O. Griffin	
City, State, and ZIP Code HC 68 Box 860 Kingston, OK 73439	
P.O., State and ZIP Code	
Postage	\$
Certified Fee	
Special Delivery Fee	
Restricted Delivery Fee	
Return Receipt Showing to Whom & Date Delivered	
Return Receipt Showing to Whom, Date, and Addressee's Address	
TOTAL Postage & Fees	
Postmark or Date	

PS Form 3800, March 1993

Z 106 611 768

**Receipt for
Certified Mail**No Insurance Coverage Provided
Do not use for International Mail
(See Reverse)

Sent to Benny Lynn Stone	
City, State, and ZIP Code PO Box 667 Stanton, Texas 79782	
P.O., State and ZIP Code	
Postage	\$ <input checked="" type="checkbox"/>
Certified Fee	<input checked="" type="checkbox"/>
Special Delivery Fee	
Restricted Delivery Fee	
Return Receipt Showing to Whom & Date Delivered	
Return Receipt Showing to Whom, Date, and Addressee's Address	
TOTAL Postage & Fees	
Postmark or Date	

Z 106 611 766

**Receipt for
Certified Mail**No Insurance Coverage Provided
Do not use for International Mail
(See Reverse)

Sent to John P. Stone	
City, State, and ZIP Code 303 North Oak Stanton, Texas 79782	
P.O., State and ZIP Code	
Postage	\$ <input checked="" type="checkbox"/>
Certified Fee	<input checked="" type="checkbox"/>
Special Delivery Fee	
Restricted Delivery Fee	
Return Receipt Showing to Whom & Date Delivered	
Return Receipt Showing to Whom, Date, and Addressee's Address	
TOTAL Postage & Fees	
Postmark or Date	

PS Form 3800, March 1993

Z 106 611 771

**Receipt for
Certified Mail**No Insurance Coverage Provided
Do not use for International Mail
(See Reverse)

Sent to Thelma May Cooper	
City, State, and ZIP Code PO Box 72 Dal, NM 88252	
P.O., State and ZIP Code	
Postage	\$ <input checked="" type="checkbox"/>
Certified Fee	<input checked="" type="checkbox"/>
Special Delivery Fee	
Restricted Delivery Fee	
Return Receipt Showing to Whom & Date Delivered	
Return Receipt Showing to Whom, Date, and Addressee's Address	
TOTAL Postage & Fees	
Postmark or Date	

PS Form 3800, March 1993

Z 106 611 776

**Receipt for
Certified Mail**No Insurance Coverage Provided
Do not use for International Mail
(See Reverse)

Sent to R. D. Sims	
Post Office Box 922	
City, State and ZIP Code Elmwood, NM 88231	
Postage	\$ ✓
Certified Fee	✓
Special Delivery Fee	
Restricted Delivery Fee	
Return Receipt Showing to Whom & Date Delivered	✓
Return Receipt Showing to Whom, Date, and Addressee's Address	
TOTAL Postage & Fees	\$ ✓
Postmark or Date	

Z 106 611 763

**Receipt for
Certified Mail**No Insurance Coverage Provided
Do not use for International Mail
(See Reverse)

Sent to Jerry Ann Wynn	
Post Office Box 364	
City, State and ZIP Code Broadway, Va 22815	
Postage	\$ ✓
Certified Fee	✓
Special Delivery Fee	
Restricted Delivery Fee	
Return Receipt Showing to Whom & Date Delivered	✓
Return Receipt Showing to Whom, Date, and Addressee's Address	
TOTAL Postage & Fees	\$ ✓
Postmark or Date	

PS Form 3800, March 1993

Z 106 611 764

**Receipt for
Certified Mail**No Insurance Coverage Provided
Do not use for International Mail
(See Reverse)

Sent to Cynthia Mart Spillar	
Post Office Box 25918	
City, State and ZIP Code Lake Lawn Drive Spring, TX 77380	
Postage	\$ ✓
Certified Fee	✓
Special Delivery Fee	
Restricted Delivery Fee	
Return Receipt Showing to Whom & Date Delivered	✓
Return Receipt Showing to Whom, Date, and Addressee's Address	
TOTAL Postage & Fees	\$ ✓
Postmark or Date	

PS Form 3800, March 1993

Z 106 611 769

**Receipt for
Certified Mail**No Insurance Coverage Provided
Do not use for International Mail
(See Reverse)

Sent to Verna Jean Jinkins	
Post Office Box 237	
City, State and ZIP Code Socorro, NM 87801	
Postage	\$ ✓
Certified Fee	✓
Special Delivery Fee	
Restricted Delivery Fee	
Return Receipt Showing to Whom & Date Delivered	✓
Return Receipt Showing to Whom, Date, and Addressee's Address	
TOTAL Postage & Fees	\$ ✓
Postmark or Date	

Z 106 611 778

**Receipt for
Certified Mail**No Insurance Coverage Provided
Do not use for International Mail
(See Reverse)

Sent to Jewell Ellen Griffin	
Post Office Box 860	
City, State and ZIP Code Kingston, OK 73439	
Postage	\$ ✓
Certified Fee	✓
Special Delivery Fee	
Restricted Delivery Fee	
Return Receipt Showing to Whom & Date Delivered	✓
Return Receipt Showing to Whom, Date, and Addressee's Address	
TOTAL Postage & Fees	\$ ✓
Postmark or Date	

PS Form 3800, March 1993

Z 106 611 772

**Receipt for
Certified Mail**No Insurance Coverage Provided
Do not use for International Mail
(See Reverse)

Sent to Fay Ruth Parrish	
Post Office Box 5007	
City, State and ZIP Code Chapel Hill Midland, Texas 79705	
Postage	\$ ✓
Certified Fee	✓
Special Delivery Fee	
Restricted Delivery Fee	
Return Receipt Showing to Whom & Date Delivered	✓
Return Receipt Showing to Whom, Date, and Addressee's Address	
TOTAL Postage & Fees	\$ ✓
Postmark or Date	

PS Form 3800, March 1993

Z 106 611 775

**Receipt for Certified Mail**No Insurance Coverage Provided
Do not use for International Mail
(See Reverse)

Sent to oyd Raleigh Griffin	
Street and Box Box 860	
City, State and ZIP Code Agaton, OK 73439	
Postage	\$ 1
Certified Fee	1
Special Delivery Fee	
Restricted Delivery Fee	
Return Receipt Showing to Whom & Date Delivered	✓
Return Receipt Showing to Whom, Date, and Addressee's Address	
TOTAL Postage & Fees	3 44
Postmark or Date	

Z 106 611 774

**Receipt for Certified Mail**No Insurance Coverage Provided
Do not use for International Mail
(See Reverse)

Sent to Dorothy J. Gregory	
Street and Box PO Box 132	
City, State and ZIP Code Eunice, NM 88231	
Postage	\$ 1
Certified Fee	1
Special Delivery Fee	
Restricted Delivery Fee	
Return Receipt Showing to Whom & Date Delivered	✓
Return Receipt Showing to Whom, Date, and Addressee's Address	
TOTAL Postage & Fees	3 44
Postmark or Date	

PS Form 3800, March 1993

Z 106 611 773

**Receipt for Certified Mail**No Insurance Coverage Provided
Do not use for International Mail
(See Reverse)

Sent to Minnie Belle Hedgpeth	
Street and Box PO Box 1045	
City, State and ZIP Code Eunice, NM 88252	
Postage	\$ 1
Certified Fee	1
Special Delivery Fee	
Restricted Delivery Fee	
Return Receipt Showing to Whom & Date Delivered	✓
Return Receipt Showing to Whom, Date, and Addressee's Address	
TOTAL Postage & Fees	3 44
Postmark or Date	

PS Form 3800, March 1993

Z 106 611 765

**Receipt for Certified Mail**No Insurance Coverage Provided
Do not use for International Mail
(See Reverse)

Sent to Linda Kay Winter	
Street and Box 3414 Ann Arbor	
City, State and ZIP Code Houston, TX 77063	
Postage	\$ 1
Certified Fee	1
Special Delivery Fee	
Restricted Delivery Fee	
Return Receipt Showing to Whom & Date Delivered	✓
Return Receipt Showing to Whom, Date, and Addressee's Address	
TOTAL Postage & Fees	2
Postmark or Date	

Z 106 611 762

**Receipt for Certified Mail**No Insurance Coverage Provided
Do not use for International Mail
(See Reverse)

Sent to Michael Alan Huntington	
Street and Box 433 South 7th	
City, State and ZIP Code PO Box 1051 Jal, NM 88252	
Postage	\$ 1
Certified Fee	1
Special Delivery Fee	
Restricted Delivery Fee	
Return Receipt Showing to Whom & Date Delivered	✓
Return Receipt Showing to Whom, Date, and Addressee's Address	
TOTAL Postage & Fees	2
Postmark or Date	

PS Form 3800, March 1993

Z 106 611 760

**Receipt for Certified Mail**No Insurance Coverage Provided
Do not use for International Mail
(See Reverse)

Sent to Amber Hess Corp.	
Street and Box PO Box 201544	
City, State and ZIP Code Houston, Texas 77216	
Postage	\$ 1
Certified Fee	1
Special Delivery Fee	
Restricted Delivery Fee	
Return Receipt Showing to Whom & Date Delivered	✓
Return Receipt Showing to Whom, Date, and Addressee's Address	
TOTAL Postage & Fees	2
Postmark or Date	

PS Form 3800, March 1993