



P.O. Box 2409  
Hobbs, NM 88241-2409  
Telephone 505/393-7106

January 10, 1996

Mr. William J. Lemay, Director  
State of New Mexico  
Oil Conservation Division  
PO Box 2088  
Santa Fe NM 87504-2088

RE: Application for Surface Commingling

Denton No. 1  
O, Sec. 11, T-15-S, R-37-E  
990' FSL & 1,980' FEL  
Lea County  
Denton, Devonian

J.M. Denton Lease  
Sec. 11, T-15-S, R-37-E  
  
Lea County  
Denton, Devonian

Mr. Lemay:

Marathon Oil Company respectfully requests the State of New Mexico Oil Conservation Division to grant administrative approval for surface commingling for the above mentioned leases.

Marathon Oil Company gained operatorship of the Denton No. 1 from Dinero Operating Company effective January 1, 1996. Marathon Oil Company proposes to utilize separating facilities currently on the Denton No. 1 location. Upon separation, the liquids production will be metered then sent via a 4" flowline to the J.M. Denton's current facility. The gas will be sold through the current metering system on the Denton No. 1 location. The proposed production operation is in accordance with the applicable provisions.

Please find attached a lease plat and a production facility schematic. Please note that the pool and the value of the oil is consistent between the two leases.

If you have any questions or comments, please advise.

Sincerely,

A handwritten signature in cursive script, appearing to read 'Bryan L. Williams'.

Bryan L. Williams  
Production Engineer  
(505) 393-7106 ext. 212

CASE NO. 10922  
EXHIBIT NO. Z  
SUBMITTED BY MARATHON OIL COMPANY  
MARCH 3, 1994

DENTON No. 1

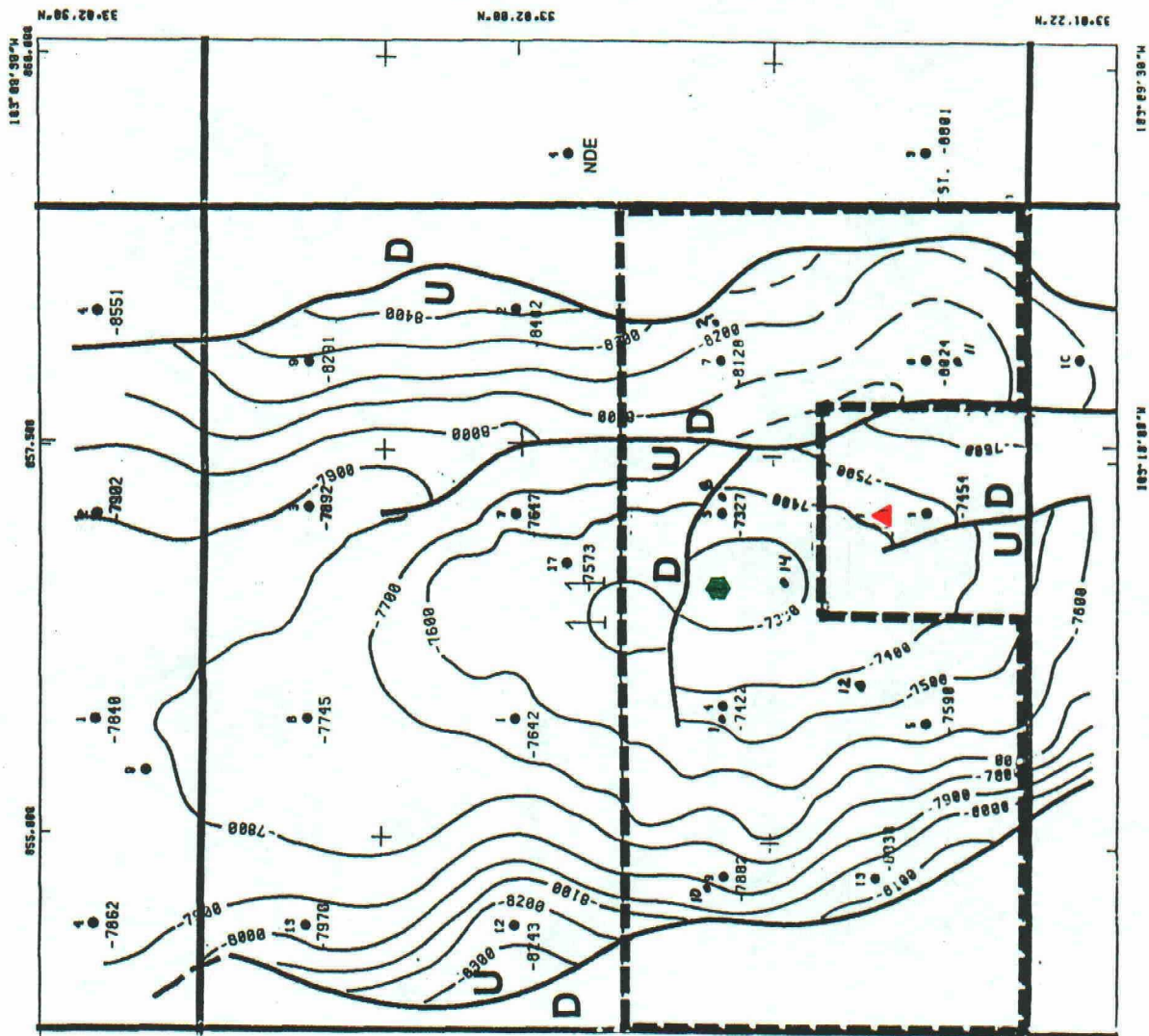


MARATHON OIL COMPANY

DENTON, FIELD AREA  
LEA COUNTY, NEW MEXICO

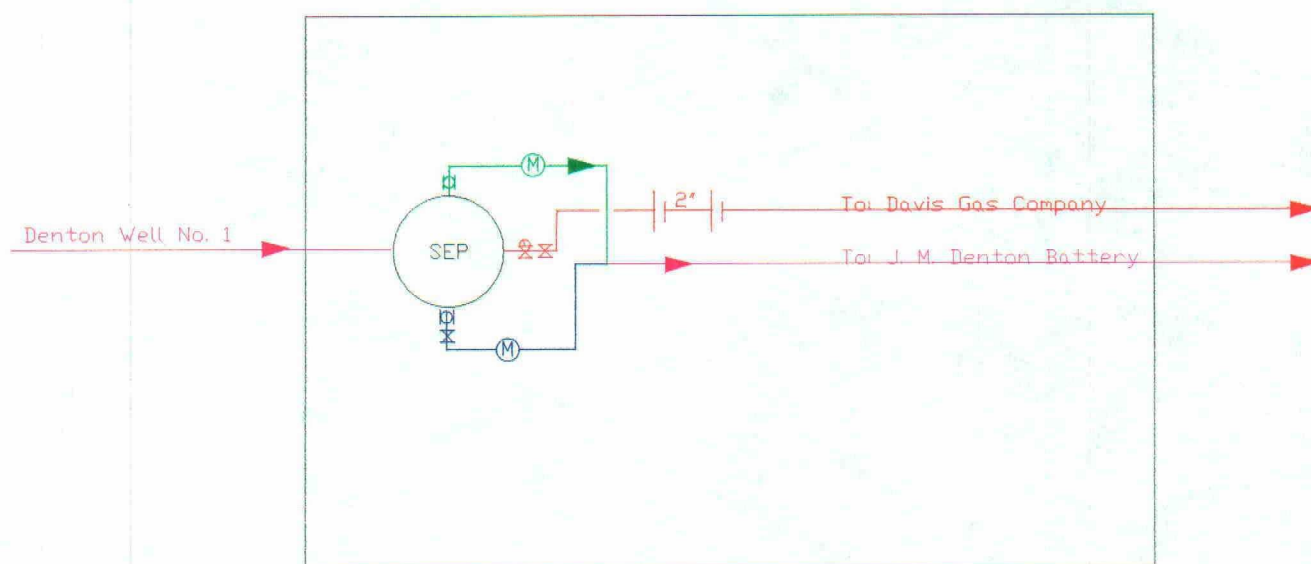
STRUCTURE MAP FROM SEISMIC  
TOP OF DEVONIAN

O. REBENSTORF				C.I. = 100
DATE	REGION/AREA	STATE/NATION	MAP NO.	
20-JAN-94	MID-CONT	NEW MEXICO	DENTON, MFD	



Production Facility Drawing  
Denton Well No. 1 Battery  
J. M. Denton Field, NM  
January 10, 1996

— N —→

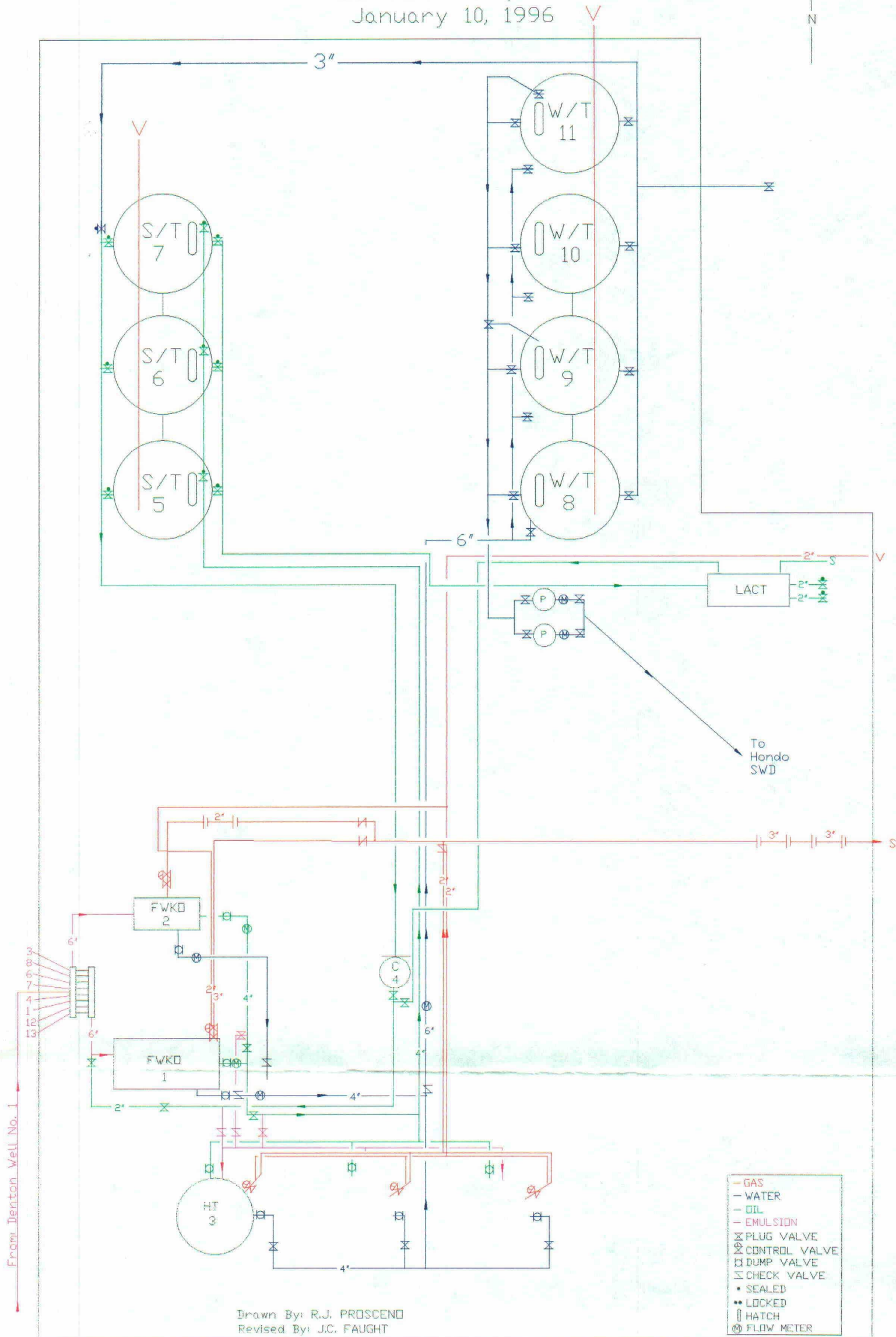


Drawn By: J. C. Faught

— GAS
— WATER
— OIL
— EMULSION
⊗ PLUG VALVE
⊗ CONTROL VALVE
⊗ DUMP VALVE
⊗ CHECK VALVE
• SEALED
• LOCKED
⊗ HATCH
⊗ FLOW METER



Production Facility Drawing  
J.M. Denton Battery  
Denton Field, NM  
January 10, 1996



Drawn By: R.J. PROSCEND  
Revised By: J.C. FAUGHT

— GAS
— WATER
— OIL
— EMULSION
⊗ PLUG VALVE
⊗ CONTROL VALVE
⊗ DUMP VALVE
⊗ CHECK VALVE
• SEALED
•• LOCKED
⊏ HATCH
⊗ FLOW METER

Revised February 10, 1994

Instructions on back

Submit to Appropriate District Office

State Lease - 4 Copies

Fee Lease - 3 Copies

District I  
PO Box 1980, Hobbs, NM 88241-1980  
District II  
811 S. 1st Street, Artesia, NM 88210-2834  
District III  
1000 Rio Brazos Rd., Aztec, NM 87410  
District IV  
PO Box 2088, Santa Fe, NM 87504-2088

**OIL CONSERVATION DIVISION**  
**P.O. Box 2088**  
**Santa Fe, NM 87504-2088**

☐ AMENDED REPORT

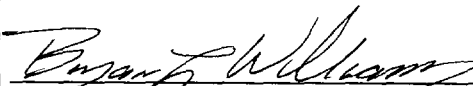
**WELL LOCATION AND ACREAGE DEDICATION PLAT**

<sup>1</sup> API Number 3002525495	<sup>2</sup> Pool Code 16910	<sup>3</sup> Pool Name Denton; Devonian
<sup>4</sup> Property Code	<sup>5</sup> Property Name Denton	<sup>6</sup> Well Number 1
<sup>7</sup> OGRID No. 014021	<sup>8</sup> Operator Name Marathon Oil Company	<sup>9</sup> Elevation 3788

<sup>10</sup> Surface Location									
UL or lot no. 0	Section 11	Township 15S	Range 37E	Lot. Idn	Feet from the 990	North/South Line South	Feet from the 1,980	East/West line East	County Lea

<sup>11</sup> Bottom Hole Location If Different From Surface									
UL or lot no.	Section	Township	Range	Lot. Idn	Feet from the	North/South Line	Feet from the	East/West line	County
<sup>12</sup> Dedicated Acres 40	<sup>13</sup> Joint or Infill N	<sup>14</sup> Consolidation Code		<sup>15</sup> Order No.					

NO ALLOWABLE WILL BE ASSIGNED TO THIS COMPLETION UNTIL ALL INTERESTS HAVE BEEN CONSOLIDATED  
OR A NON--STANDARD UNIT HAS BEEN APPROVED BY THE DIVISION

				<sup>17</sup> OPERATOR CERTIFICATION <i>I hereby certify that the information contained herein is true and complete to the best of my knowledge and belief.</i>   Signature Bryan L. Williams Printed Name Production Engineer Title 1/11/96 Date	
					<sup>18</sup> SURVEYOR CERTIFICATION <i>I hereby certify that the well location shown on this plat was plotted from field notes of actual surveys made by me or under my supervision, and that the same is true and correct to the best of my belief.</i>  3/3/77 Date of Survey Signature and Seal of Professional Surveyer:  Certificate Number

