

DATE IN 4/25/97	SUSPENSE 5/15/97	ENGINEER BS	LOGGED BY KV	TYPE CTB
-----------------	------------------	-------------	--------------	----------

ABOVE THIS LINE FOR DIVISION USE ONLY

NEW MEXICO OIL CONSERVATION DIVISION

- Engineering Bureau -

ADMINISTRATIVE APPLICATION COVERSHEET

THIS COVERSHEET IS MANDATORY FOR ALL ADMINISTRATIVE APPLICATIONS FOR EXCEPTIONS TO DIVISION RULES AND REGULATIONS

Application Acronyms:

[NSP-Non-Standard Proration Unit] [NSL-Non-Standard Location]
 [DD-Directional Drilling] [SD-Simultaneous Dedication]
 [DHC-Downhole Commingling] [CTB-Lease Commingling] [PLC-Pool/Lease Commingling]
 [PC-Pool Commingling] [OLS - Off-Lease Storage] [OLM-Off-Lease Measurement]
 [WFX-Waterflood Expansion] [PMX-Pressure Maintenance Expansion]
 [SWD-Salt Water Disposal] [IPI-Injection Pressure Increase]
 [EOR-Qualified Enhanced Oil Recovery Certification] [PPR-Positive Production Response]

[1] TYPE OF APPLICATION - Check Those Which Apply for [A]

[A] Location - Spacing Unit - Directional Drilling

☐ NSL ☐ NSP ☐ DD ☐ SD

25

Check One Only for [B] and [C]

[B] Commingling - Storage - Measurement

☐ DHC ☒ CTB ☐ PLC ☐ PC ☐ OLS ☐ OLM

[C] Injection - Disposal - Pressure Increase - Enhanced Oil Recovery

☐ WFX ☐ PMX ☐ SWD ☐ IPI ☐ EOR ☐ PPR

[2] NOTIFICATION REQUIRED TO: - Check Those Which Apply, or ☒ Does Not Apply

[A] ☒ Working, Royalty or Overriding Royalty Interest Owners

[B] ☒ Offset Operators, Leaseholders or Surface Owner

[C] ☒ Application is One Which Requires Published Legal Notice

[D] ☒ Notification and/or Concurrent Approval by BLM or SLO

U.S. Bureau of Land Management - Commissioner of Public Lands, State Land Office

[E] ☒ For all of the above, Proof of Notification or Publication is Attached, and/or,

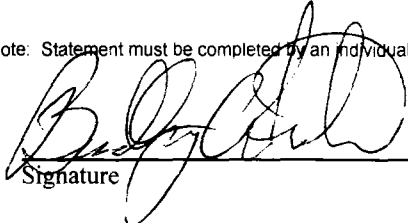
[F] ☒ Waivers are Attached

[3] INFORMATION / DATA SUBMITTED IS COMPLETE - Statement of Understanding

I hereby certify that I, or personnel under my supervision, have read and complied with all applicable Rules and Regulations of the Oil Conservation Division. Further, I assert that the attached application for administrative approval is accurate and complete to the best of my knowledge and where applicable, verify that all interest (WI, RI, ORRI) is common. I understand that any omission of data, information or notification is cause to have the application package returned with no action taken.

Note: Statement must be completed by an individual with supervisory capacity.

BRADLEY A. FOSTER
Print or Type Name


Signature

ASSET TEAM LEADER
Title

4/23/97
Date



April 23, 1997

Chevron U.S.A. Production Company
P.O. Box 1150
Midland, TX 79702

Administrative Application for Surface Commingling
North Monument Field
Monument "12" State No. 3
1650' FSL & 1550' FWL, Unit K, Sec. 12, T19S, R36E
Monument "12" State No. 4
1650' FSL & 990' FWL, Unit L, Sec. 12, T19S, R36E
Monument "13" State No. 7
330' FNL & 330' FWL, Unit D, Sec. 13, T19S, R36E
Lea County, New Mexico

State of New Mexico
Energy, Minerals & Natural Resources Department
Oil Conservation Division
2040 South Pacheco
Santa Fe, New Mexico 87505

Attention: Mr. William J. LeMay - Director

Dear Mr. LeMay:

Chevron U.S.A., Inc. respectfully requests administrative approval for surface commingling of the production from the three above described wells.

Monument "12" State #3 is completed in North Monument Abo. The IP was 142 bopd, 50 bwpd, and 126 mcfpd. The API gravity is 40.4° at 60° F. The Monument "12" State #4 is completed in North Monument Abo. The IP was 130 bopd, 10 bwpd, and 365 mcfpd. The API gravity is 42° at 60° F. The Monument "13" State #7 is completed in North Monument Abo. The IP was 200 bopd, 30 bwpd, and 550 mcfpd. The API gravity is 41.6° at 76° F.

The commingling of these three wells will allow the producing of the wells with one battery at a savings of approximately \$50,000. The oils are from the same zone and will be compatible. The value of the commingled oil will be the same as the individual oils. The working interest owners and royalty owners are the same on the two leases. Attached is a schematic diagram of the production facility.

If you have any questions, or if you require further information, please contact Lloyd Trautman at (915) 687-7152.

Sincerely,

A handwritten signature in black ink that reads "J. K. Ripley". The signature is written in a cursive style with a large, stylized "R".

J. K. Ripley

Attachments

**cc: NMOCD - Hobbs, NM
NM State Land Office - Santa Fe, NM
N. V. Mouser
L. V. Trautman**

Ben,

I am attaching copy of original Application for Surface Commingling. I am also attaching copy of new Application, adding the well currently being completed.

Thank you for your attention to this matter.

Janice Ripley
(915) 687-7148



June 24, 1997

Chevron U.S.A. Production Company
P.O. Box 1150
Midland, TX 79702

**Administrative Application for Surface Commingling
North Monument Field
Monument "12" State No. 3
1650' FSL & 1650' FWL, Unit K, Sec. 12, T19S, R36E
Monument "12" State No. 4
1650' FSL & 990' FWL, Unit L, Sec. 12, T19S, R36E
Monument "13" State No. 7
330' FNL & 330' FWL, Unit D, Sec. 13, T19S, R36E
Monument "13" State No. 9
569' FNL & 1650' FWL, Unit C, Sec. 13, T19S, R36E
Lea County, New Mexico**

**State of New Mexico
Energy, Minerals & Natural Resources Department
Oil Conservation Division
2040 South Pacheco
Santa Fe, New Mexico 87505**

Attention: Mr. William J. LeMay - Director

Dear Mr. LeMay:

Chevron U.S.A., Inc. respectfully requests administrative approval for surface commingling of the production from the four above described wells.

Monument "12" State #3 is completed in North Monument Abo. The IP was 142 bopd, 50 bwpd, and 126 mcspd. The API gravity is 40.4° at 60° F. The Monument "12" State #4 is completed in North Monument Abo. The IP was 130 bopd, 10 bwpd, and 365 mcspd. The API gravity is 42° at 60° F. The Monument "13" State #7 is completed in North Monument Abo. The IP was 200 bopd, 30 bwpd, and 550 mcspd. The API gravity is 41.6° at 76° F. The Monument "13" State #9 is currently being completed in North Monument Abo.

The commingling of these three wells will allow the producing of the wells with one battery at a savings of approximately \$50,000. The oils are from the same zone and will be compatible. The value of the commingled oil will be the same as the individual oils. The working interest owners and royalty owners are the same on the two leases. Attached is a schematic diagram of the production facility.

If you have any questions, or if you require further information, please contact Lloyd Trautman at (915) 687-7152.

Sincerely,

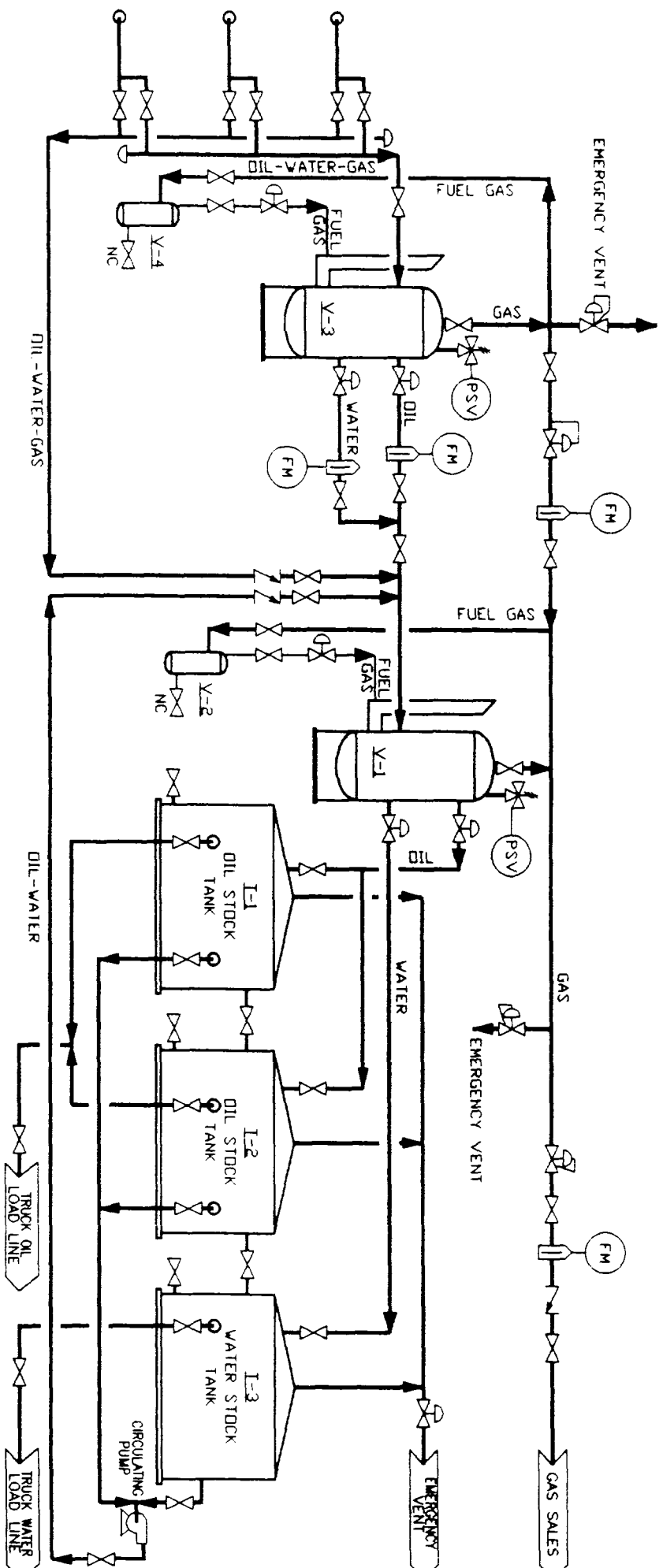
A handwritten signature in cursive script, reading "J. K. Ripley".

J. K. Ripley

Attachments

cc: NMOCD - Hobbs, NM
NM State Land Office - Santa Fe, NM

V-3 48' X 20'-0" VERTICAL TEST TREATER SIVALLS 50 PSI WP	V-4 6' D.D. X 48' VERTICAL GAS SCRUBBER 125 PSI WP	V-1 48' X 20'-0" VERTICAL TREATER SIVALLS 50 PSIG WP	V-2 6' X 48' VERTICAL GAS SCRUBBER 125 PSI WP	I-1 15'-6' X 16'-0" STEEL OIL STOCK TANK 1997	I-2 15'-6' X 16'-0" STEEL OIL STOCK TANK 1997	I-3 15'-6' X 16'-0" STEEL WATER STOCK TANK 1997
----------------------------------------------------------------------	-------------------------------------------------------------	------------------------------------------------------------------	--------------------------------------------------------	--------------------------------------------------------	--------------------------------------------------------	----------------------------------------------------------



Devcon U.S.A. Inc. Permian Oil & Gas Profit Center	
MONUMENT ABO FIELD MONUMENT 12 STATE NO. 3 1650 FSL 1650 FEL SEC. 12 T19S - R36E PROCESS FLOW DIAGRAM	
Lea County, New Mexico	
DATE: 9/27/77 BY: NLS CHECKED: 1 APPROVED: 1	RAM 9/27/77 1 1
1650 FSL 1650 FEL SEC. 12 T19S - R36E PROCESS FLOW DIAGRAM	