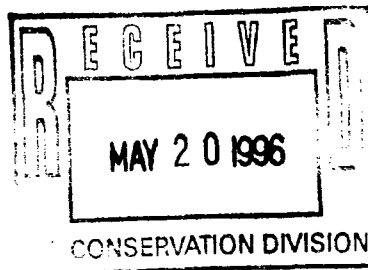


NIR

EXXON COMPANY, U.S.A.
POST OFFICE BOX 1600 • MIDLAND TEXAS 79702-1600

MIDLAND PRODUCTION ORGANIZATION
OPERATIONS INTEGRITY



May 17, 1996

New Mexico Oil Conservation Commission
2040 South Pacheco
Santa Fe, New Mexico 87505

Attention: William J. LeMay
Division Director

Re: Amended Commingling Order PC-137

Exxon is submitting for your approval an amended surface commingling (exception to Rule 303.A) for the following lease.

New Mexico -S- State Lease; Property Code 004198, NMOCD District I, Lea County

Per instructions in Rule 303.B(2), please see attachments for information required for administrator approval. If there are any questions, please contact me at (915) 688-6782.

Sincerely,

A handwritten signature in cursive script, appearing to read "Alex M. Correa".

Alex M. Correa
Sr. Regulatory Specialist

AMC:mym
Attachments
5-pc137.fm

c: New Mexico State Land Office

PROPERTY CODE: 004199

PROPERTY NAME: NEW MEXICO -S- STATE

EFFECTIVE: 05/15/96

(LEASE NAME)

COMMINGLE ORDER PC-137

LAST AMENDED: 03/13/69

POOL CODE	POOL NAME	WELL NO.	DHC	OIL/COND GRAVITY	WELL CLASS	PROD METHOD	CRUDE SWEET/ SOUR	VALUE PER BBL	LATEST WELL TEST DATE	OIL/COND	GAS (KCF)	WATER
06660	BLINEBRY OIL AND GAS	12	NO	33.7	OW	PUMP	SWEET	20.75	7-12-95	6.0	131.0	1.0
06660	BLINEBRY OIL AND GAS	14	NO	39.1	OW	PUMP	SWEET	20.75	7-3-95	7.0	504.0	0
06660	BLINEBRY OIL AND GAS	21U	NO	--	GW	DRY	SWEET	20.75	SI	--	--	--
06660	BLINEBRY OIL AND GAS	22U	NO	38.0	OW	FLOW	SWEET	20.75	4-14-96	8.6	359.0	0
06660	BLINEBRY OIL AND GAS	23U	NO	--	GW	WET	SWEET	20.75	SI	--	--	--
06660	BLINEBRY OIL AND GAS	24L	NO	--	OW	PUMP	SWEET	20.75	SI	--	--	--
06660	BLINEBRY OIL AND GAS	25	NO	39.4	OW	PUMP	SWEET	20.75	7-5-95	5.0	32.0	0
06660	BLINEBRY OIL AND GAS	27	NO	38.1	OW	PUMP	SWEET	20.75	7-7-95	16.0	742.0	0
06660	BLINEBRY OIL AND GAS	28	NO	37.0	OW	PUMP	SWEET	20.75	7-9-95	14.0	67.0	0
06660	BLINEBRY OIL AND GAS	31	NO	34.9	GW	WET	SWEET	20.75	9-3-95	5.0	613.0	0
06660	BLINEBRY OIL AND GAS	32	NO	35.3	OW	PUMP	SWEET	20.75	7-12-95	21.0	711.0	4
06660	BLINEBRY OIL AND GAS	33	NO	40.0	OW	PUMP	SWEET	20.75	7-5-95	96.0	964.0	0
06660	BLINEBRY OIL AND GAS	34U	NO	Unknown	OW	PUMP	SWEET	20.75	Sec Reason for filing			0
06660	BLINEBRY OIL AND GAS	38	NO	37.4	GW	WET	SWEET	20.75	9-3-95	1.0	988.0	0
06660	BLINEBRY OIL AND GAS	39	NO	34.3	OW	PUMP	SWEET	20.75	7-15-95	19.0	447.0	0
06660	BLINEBRY OIL AND GAS	13L	DHC-1060	--	GW	DRY	SWEET	20.75	1-18-96	0.1	311.0	1
19190	DRINKARD	33U	NO	--	GW	DRY	SWEET	20.75	SI	--	--	--
60240	TUBB OIL AND GAS	13U	DHC-1060	--	GW	DRY	SWEET	20.75	9-3-95	1.0	509.0	0
60240	TUBB OIL AND GAS	20	NO	--	GW	DRY	SWEET	20.75	9-3-95	0	706.0	0
60240	TUBB OIL AND GAS	21L	NO	--	GW	DRY	SWEET	20.75	9-3-95	0	280.0	0
60240	TUBB OIL AND GAS	23L	NO	--	GW	DRY	SWEET	20.75	9-3-95	0	451.0	0
62700	WANTZ ABO	24M	NO	41.4	OW	FLOW	SWEET	20.75	3-2-96	7.2	185.0	6.0
62700	WANTZ ABO	25L	NO	--	OW	FLOW	SWEET	20.75	SI	--	--	--
62700	WANTZ ABO	29L	NO	29.4	OW	FLOW	SWEET	20.75	2-19-96	1.3	18.8	0
62700	WANTZ ABO	30	NO	--	OW	PUMP	SWEET	20.75	SI	--	--	--
62700	WANTZ ABO	34L	NO	--	GW	DRY	SWEET	20.75	2-23-96	0	160.1	0
62700	WANTZ ABO	35	NO	40.0	OW	FLOW	SWEET	20.75	2-9-96	9.1	99.3	5.0
62700	WANTZ ABO	36U	NO	39.9	OW	FLOW	SWEET	20.75	2-19-96	17.1	89.9	2.0
62700	WANTZ ABO	37U	DHC-769	39.0	OW	PUMP	SWEET	20.75	2-13-96	10.4	302.0	3
62700	WANTZ ABO	40	NO	39.7	OW	PUMP	SWEET	20.75	2-26-96	28.0	73.9	0
62730	WANTZ GRANITE WASH	36L	NO	--	OW	PUMP	SWEET	20.75	SI	--	--	--
62730	WANTZ GRANITE WASH	37L	DHC-769	39.0	OW	PUMP	SWEET	20.75	2-13-96	0.7	19.3	0

PROPERTY CODE: 004199

**PROPERTY NAME: NEW MEXICO-S-STATE
(LEASE NAME)**

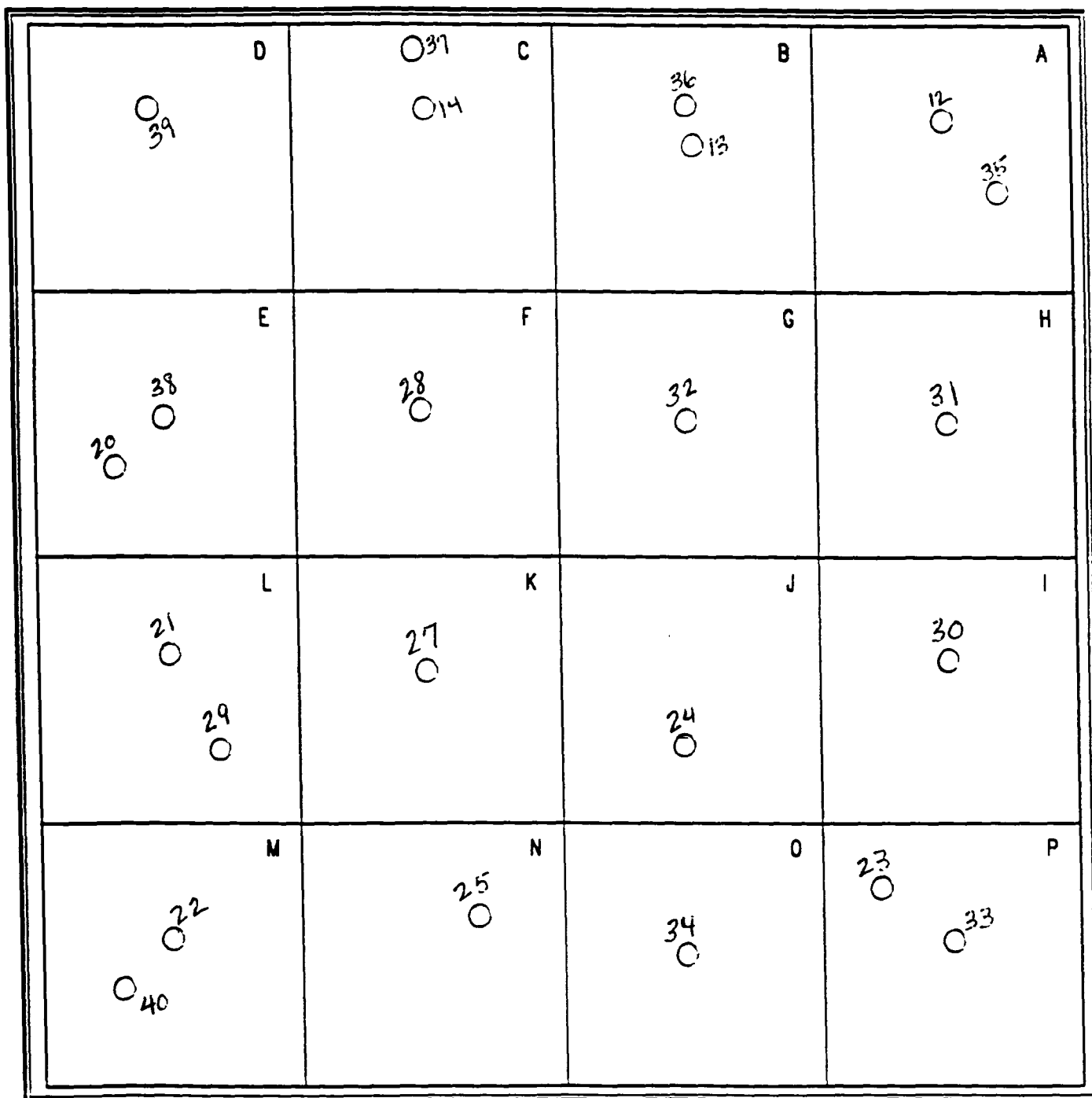
STATEMENTS:

1. Royalties and working interest are identical for all wells on lease.
2. Liquids are compatible and commingling of hydrocarbons will not adversely affect pricing.
3. Authority to downhole commingle #13L & U was approved (DHC Order - 1060) and #37U&L was approved (DHC Order - 769).
4. No great disparity among liquid gravities.

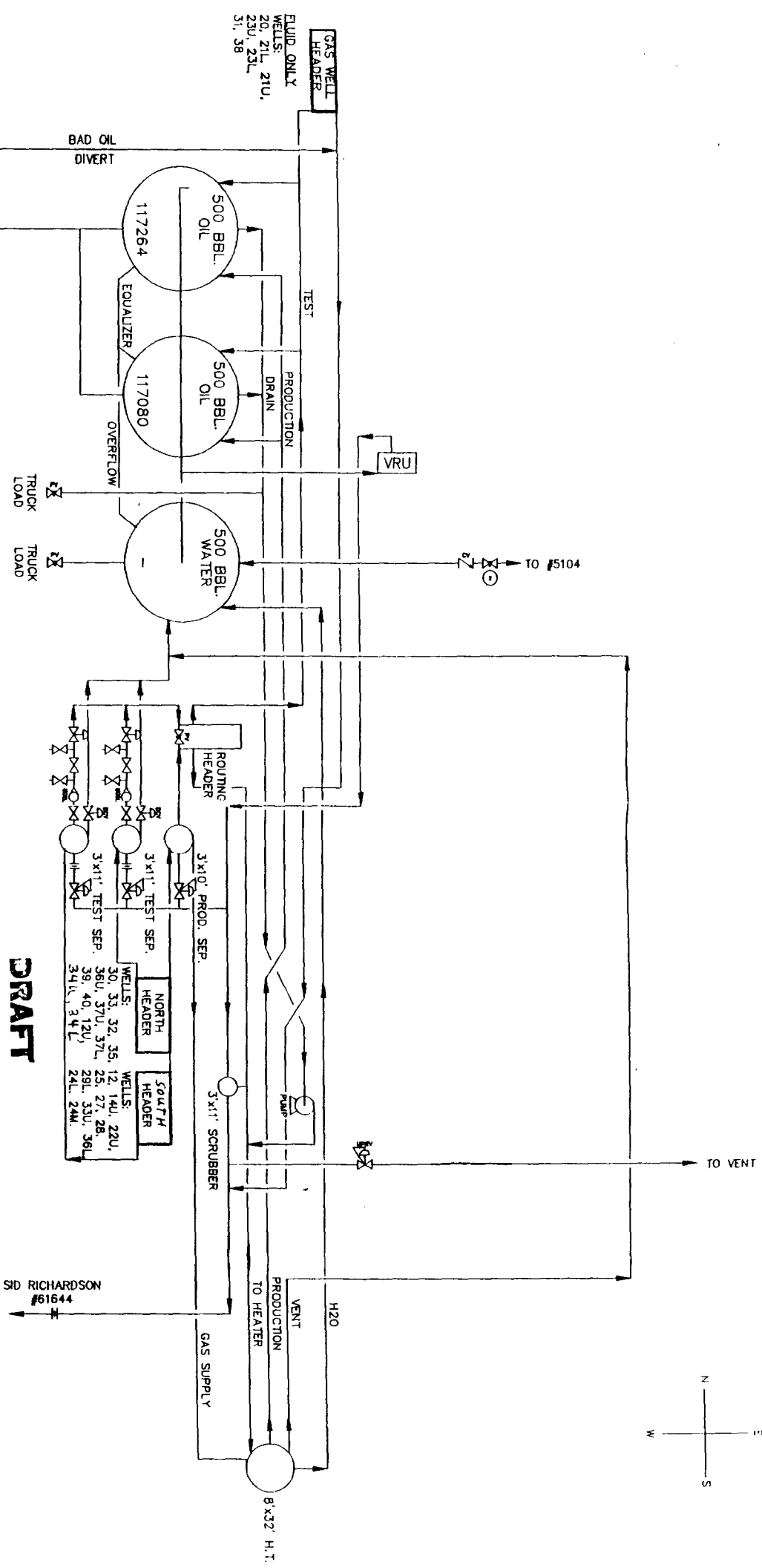
REASONS FOR FILING:

1. Well No. 34L is currently completed and SI as a Wantz Abo gas well. Previous Abo production was approximately 170 KCFGPD (no oil, no water). Permit has been approved to perforate and complete in Blinbery (34U) as an oil well. Anticipated Blinbery production will be 30 BOPD, 275 MCFGPD, 0 BWPD. These pools will be surface commingled at the battery and production will be well test allocated.

EXXON CORP.
N M "S" STATE LEASE
SECTION 2, T22S, R37E
LEA COUNTY, NM



* WELL LOCATIONS ARE APPROXIMATE, C-102 FOR EACH WELL IS ON FILE.



DRAFT

GAS WELL
HEADER
FLUID ONLY
WELLS:
20, 21, 21U,
23U, 23L,
31, 38

BAD OIL
DIVERT

TEST

500 BBL.
OIL

117264

EQUALIZER

500 BBL.
OIL

117080

OVERFLOW

500 BBL.
WATER

TRUCK
LOAD

TRUCK
LOAD

VRU

TO #5104

LACT

OIL SALES
TO TANK
PIPELINE
METER NO.
204902

FUEL GAS
Calc. Rate = 1005 KCF/BBL OIL
HEATER TREATMENT # 1
H₂O Cut (K) 1.1%
Firing Temp. (°F) 85
Inlet Fluid Temp. (°F) 40
Run Time (Mo./Yr.) 3 MO.
Insulated (Y/N) 0

12	RE.	ADD TEST WING	4/94	RE	NOTES	LEASE #037721	<div> <div>EXXON</div> <div>NEW MEXICO "S" STATE T/B #5</div> <div>SEC. 2-T22S-R37E LEA CO., NM</div> <div>BLINEBRY-DRINKARD-TUBB FIELD</div> </div>		
11	D/C	CONV. REV.	11/94	RE					
10	D/C	REMOVE PUMP	11/94	RE					
9	EC	REMOVE REVENUE	6/95	RE					
8	EC	NEW FUEL GAS FID	3/95	RE					
7	EC	REMAIN PER SWITCH	3/95	RE					
6	EC	REMAIN PER SWITCH	4/95	RE					
5	EC	REMAIN PER SWITCH	4/95	RE					
4	EC	REMAIN PER SWITCH	4/95	RE					
3	EC	REMAIN PER SWITCH	4/95	RE					
2	EC	REMAIN PER SWITCH	4/95	RE					
1	EC	REMAIN PER SWITCH	4/95	RE					



NO. 24

State of New Mexico
Commissioner of Public Lands

RAY POWELL, M.S., D.V.M.
COMMISSIONER

310 OLD SANTA FE TRAIL P.O. BOX 1148
SANTA FE, NEW MEXICO 87504-1148

(505) 827-5760
FAX (505) 827-5766

May 23, 1996

Exxon Company, USA
Post Office Box 1600
Midland, Texas 79702-1600

Attn: Mr. Alex M. Correa

Re: Amended Surface Commingling Request PC-137
New Mexico "S" State Lease, Well No. 34
Section 2-22S-37E
Lea County, New Mexico

Dear Mr. Correa:

We received your application letter of May 17, 1996, wherein you requested our approval to amend New Mexico Oil Conservation Division Order No. PC-137, State Lease B-934, Section 2-22S-37E in Lea County, New Mexico.

We understand that Well No. 34L is currently completed and shut-in as a Wantz Abo gas well. Previous Abo production was approximately 170 MCFGPD (no oil, no water). A permit has been approved to perforate and complete said well in the Blinebry (34U) as an oil well. The anticipated Blinebry production will be 30 BOPD, 275 MCFGPD, 0 BWPD.

Since ownership is common throughout, and there will be no loss of revenue to the State of New Mexico's beneficiaries from your proposed operation, the Commissioner of Public Lands approves your request. Our approval is given with the understanding that the Commissioner of Public Lands reserves the right to amend or withdraw his approval should this operation prove to be unprofitable to the State at any time in the future. Our approval is subject to like approval by the New Mexico Oil Conservation Division.

Our records reflect that the New Mexico "S" State Wells approved under PC-137 are listed under Property Code No. 004198. Your application makes reference to Property Code No. 004199. Please re-check your records for this property number.


Your filing fee in the amount of thirty dollars has been received.

Exxon Company USA
May 23, 1996
Page 2

If you have any questions, or if we may be of further help, please contact Pete Martinez at (505) 827-5791.

Very truly yours,

RAY POWELL, M.S., D.V.M.
COMMISSIONER OF PUBLIC LANDS

BY: 
LARRY KEHOE, Director
Oil, Gas and Minerals Division
(505) 827-5744

RP/LK/cpm

Enclosure

cc: Reader File
OCD--David Catanach
B-934

EXXON COMPANY, U.S.A.

POST OFFICE BOX 1600 • MIDLAND, TEXAS 79702-1600

MIDLAND PRODUCTION ORGANIZATION

OPERATIONS INTEGRITY

May 17, 1996

New Mexico State Land Office
Box 1148
Santa Fe, New Mexico 87504-1148

Attention: Pete Martinez

Re: Amended Commingling Order PC-137

Exxon is submitting for your approval an amended surface commingling (exception to Rule 1.055) for the following lease.

New Mexico -S- State Lease; Property Code 004198, NMOCD District I, Lea County
State Lease: B-934

Enclosed is a \$30 check (Check Number 027740) to process the amended application.

Per instructions in Rule 1.055, please see attachments for information required for administrator approval. If there are any questions, please contact me at (915) 688-6782.

Sincerely,



Alex M. Correa
Sr. Regulatory Specialist

AMC:mym
Enclosures
5pc137.fm

cc: New Mexico Oil Conservation Commission

