

EXXON COMPANY, U.S.A.

POST OFFICE BOX 1600 • MIDLAND, TEXAS 79702-1600

MIDLAND PRODUCTION ORGANIZATION

OPERATIONS INTEGRITY

November 28, 1994

New Mexico Oil Conservation Commission
District IV
Box 2088
Santa Fe, New Mexico 87501

Attention: William J. LeMay
Division Director


Re: Amended Commingling Order PC-602

Exxon is submitting for your approval an amended surface commingling (exception to Rule 303.A) for the following lease.

J. L. Greenwood Lease; Property Code 004179, NMOCD District I, Lea County

Per instructions in Rule 303.B(2), please see attachments for information required for administrator approval. If there are any questions, please contact me at (915) 688-7874.

Sincerely,



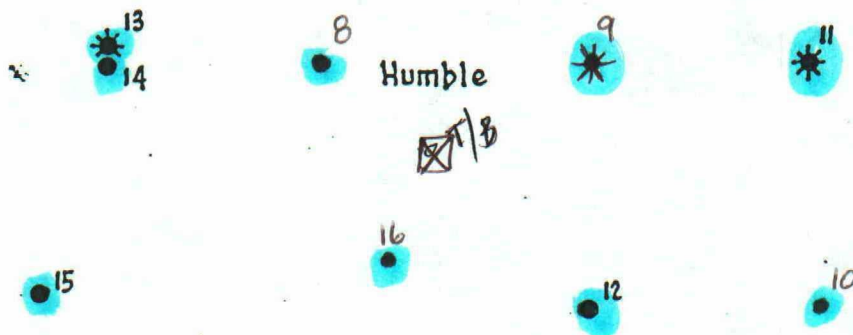
Don J. Bates
Regulatory Specialist

DJB:mym
Attachments
11\pc602.frm

J. L. GREENWOOD

8

9



17

16

* = GAS WELLS

J. L. GREENWOOD

HUMBLE OIL & REFINING COMPANY
PRODUCTION DEPARTMENT

OWN C.H.J.

ENGR. SECTION

REVISED

SCALE 1" = 1000'

JOB NO.

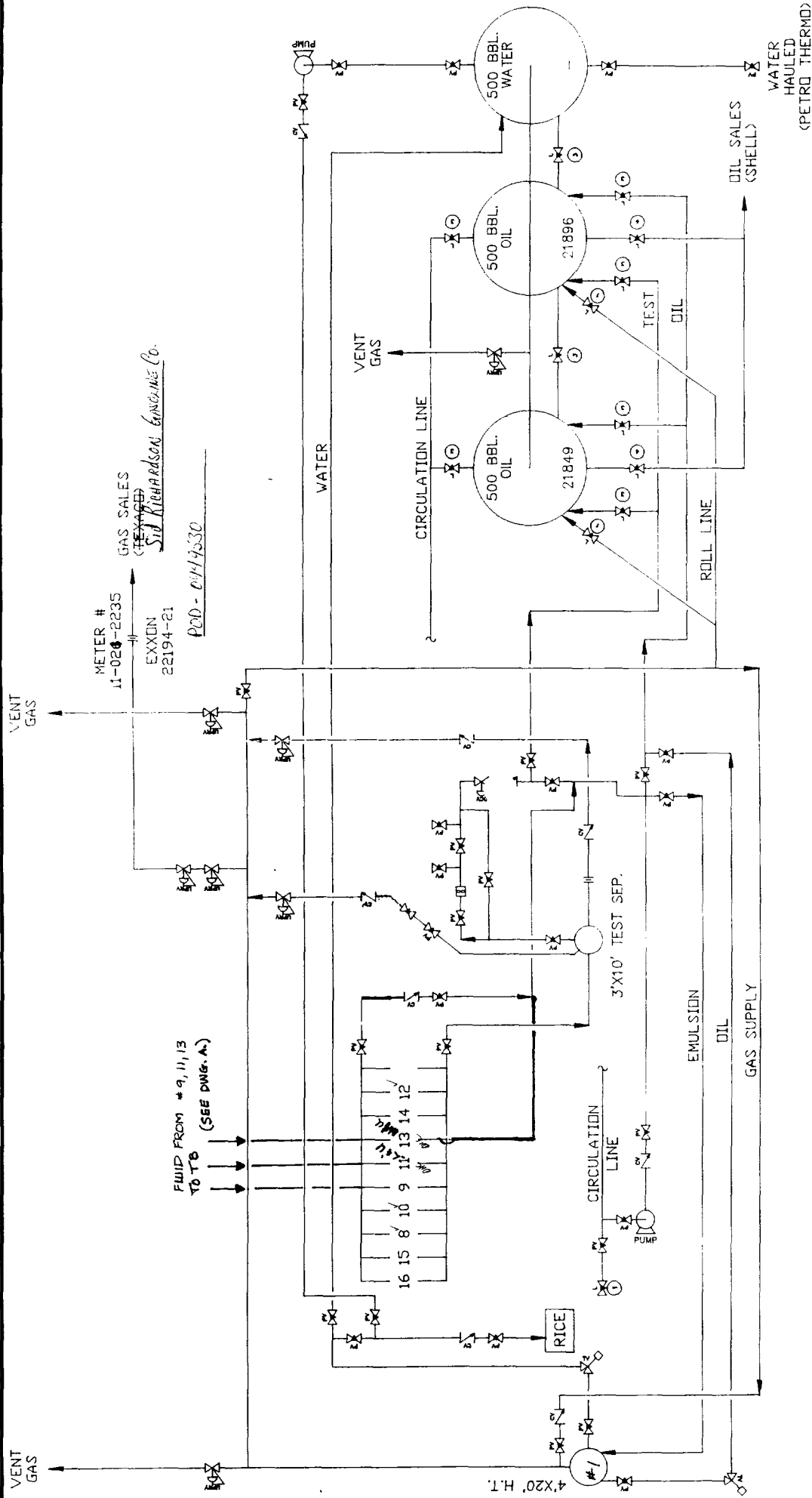
FILE NO.

CHECKED

APPROVED

DATE 12-3-70

AA-213



- VALVE LEGEND
- 1 X1 SEALED LOCKED VALVE
 - 2 X1 NORMALLY CLOSED
 - 3 X1 NORMALLY OPEN
 - 4 X1 OPEN DURING PRODUCTION:
 - 5 X1 SEALED CLOSED DURING RUN
 - 6 X1 SEALED CLOSED DURING PRODUCTION:
 - 7 X1 OPEN DURING RUN

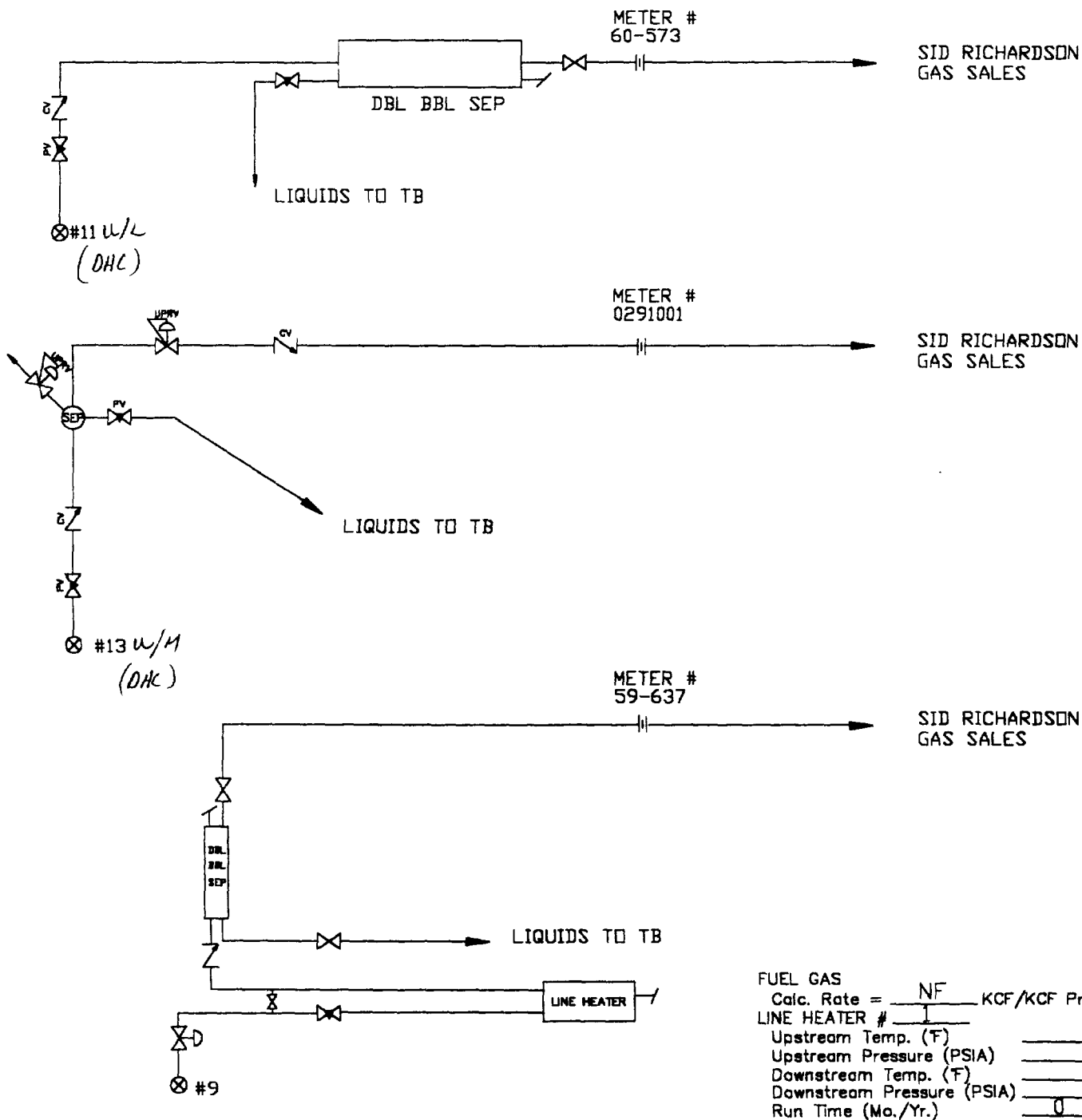
FUEL GAS
 Calc. Rate = .011 KCF/BBL OIL
 HEATER TREATER # 1
 400 Cut (x) 1
 Firing Temp (°F) 1100
 Inlet Fluid Temp (°F) 1100
 Run Time (Mo/Yr) 11/00
 Insulated (1=Y, 0=N) 0

NOTES: CAPS #6586/1080

CAPS/EXXON 6586 (022)/1080

PREPARED BY: RSM 7/17/80 DUAL	EXXON EXXON COMPANY USA PRODUCTION DEPARTMENT SOUTHWEST DIVISION	J. L. GREENWOOD T/B #1 SEC. 9, T22S, R37E BDT FIELD LEA CO., NM
NO. 1	REV. 0	SCALE NONE
BY	REVISION	DATE
1	2	10/13
2	3	5/93
3	4	10/13
4	5	10/13
5	6	10/13
6	7	10/13
7	8	10/13
8	9	10/13
9	10	10/13
10	11	10/13
11	12	10/13
12	13	10/13
13	14	10/13
14	15	10/13
15	16	10/13
16	17	10/13
17	18	10/13
18	19	10/13
19	20	10/13
20	21	10/13
21	22	10/13
22	23	10/13
23	24	10/13
24	25	10/13
25	26	10/13
26	27	10/13
27	28	10/13
28	29	10/13
29	30	10/13
30	31	10/13
31	32	10/13
32	33	10/13
33	34	10/13
34	35	10/13
35	36	10/13
36	37	10/13
37	38	10/13
38	39	10/13
39	40	10/13
40	41	10/13
41	42	10/13
42	43	10/13
43	44	10/13
44	45	10/13
45	46	10/13
46	47	10/13
47	48	10/13
48	49	10/13
49	50	10/13
50	51	10/13
51	52	10/13
52	53	10/13
53	54	10/13
54	55	10/13
55	56	10/13
56	57	10/13
57	58	10/13
58	59	10/13
59	60	10/13
60	61	10/13
61	62	10/13
62	63	10/13
63	64	10/13
64	65	10/13
65	66	10/13
66	67	10/13
67	68	10/13
68	69	10/13
69	70	10/13
70	71	10/13
71	72	10/13
72	73	10/13
73	74	10/13
74	75	10/13
75	76	10/13
76	77	10/13
77	78	10/13
78	79	10/13
79	80	10/13
80	81	10/13
81	82	10/13
82	83	10/13
83	84	10/13
84	85	10/13
85	86	10/13
86	87	10/13
87	88	10/13
88	89	10/13
89	90	10/13
90	91	10/13
91	92	10/13
92	93	10/13
93	94	10/13
94	95	10/13
95	96	10/13
96	97	10/13
97	98	10/13
98	99	10/13
99	100	10/13

ACI 3306 29270



FUEL GAS
 Calc. Rate = NF KCF/KCF Prod.
 LINE HEATER # 1
 Upstream Temp. (F) _____
 Upstream Pressure (PSIA) _____
 Downstream Temp. (F) _____
 Downstream Pressure (PSIA) _____
 Run Time (Mo./Yr.) 0

NOTES: CAPS (FORS) 6586 (022) / 1080

NO EQPT FIRED

					PREPARED BY:		EXXON			J.L. GREENWOOD WELLS 9,11,13 SEC.9, T22S, R37E B-D-T FIELD LEA CO. N.M.			
					PMM								
					ENGR. JSM								
					ENGR. 337								
					AFE CONTROL		SCALE	REV.	SIZE	DIV.	FIELD	LEASE	DWG
NO.	BY	REVISION	DATE	APP.			NONE	0	A	AC	3306	29270	A

EXXON COMPANY, U.S.A.

POST OFFICE BOX 1600 • MIDLAND, TEXAS 79702-1600

PRODUCTION DEPARTMENT
SOUTHWESTERN DIVISION

OIL FIELD DIVISION
RECEIVED

'90 JAN 22 AM 9 58

January 17, 1990

File - PC-602

Commingling Order PC-602
J.L. Greenwood Lease
Section 9, T22S, R37E
Lea County, New Mexico

New Mexico Oil Conservation Division
P.O. Box 2088
Santa Fe, New Mexico 87504

Attention David R. Catanach

Exxon has recently recompleted 3 wells on the captioned lease. Surface Commingling Order PC-602 does permit commingling in the Paddock pool so additional authority is not being requested.

Well #9 and #15 were plugged back from the Drinkard and recompleted in the Paddock pool. Well #16 was plugged back from the Brunson-Ellenburger and recompleted in the Paddock pool.

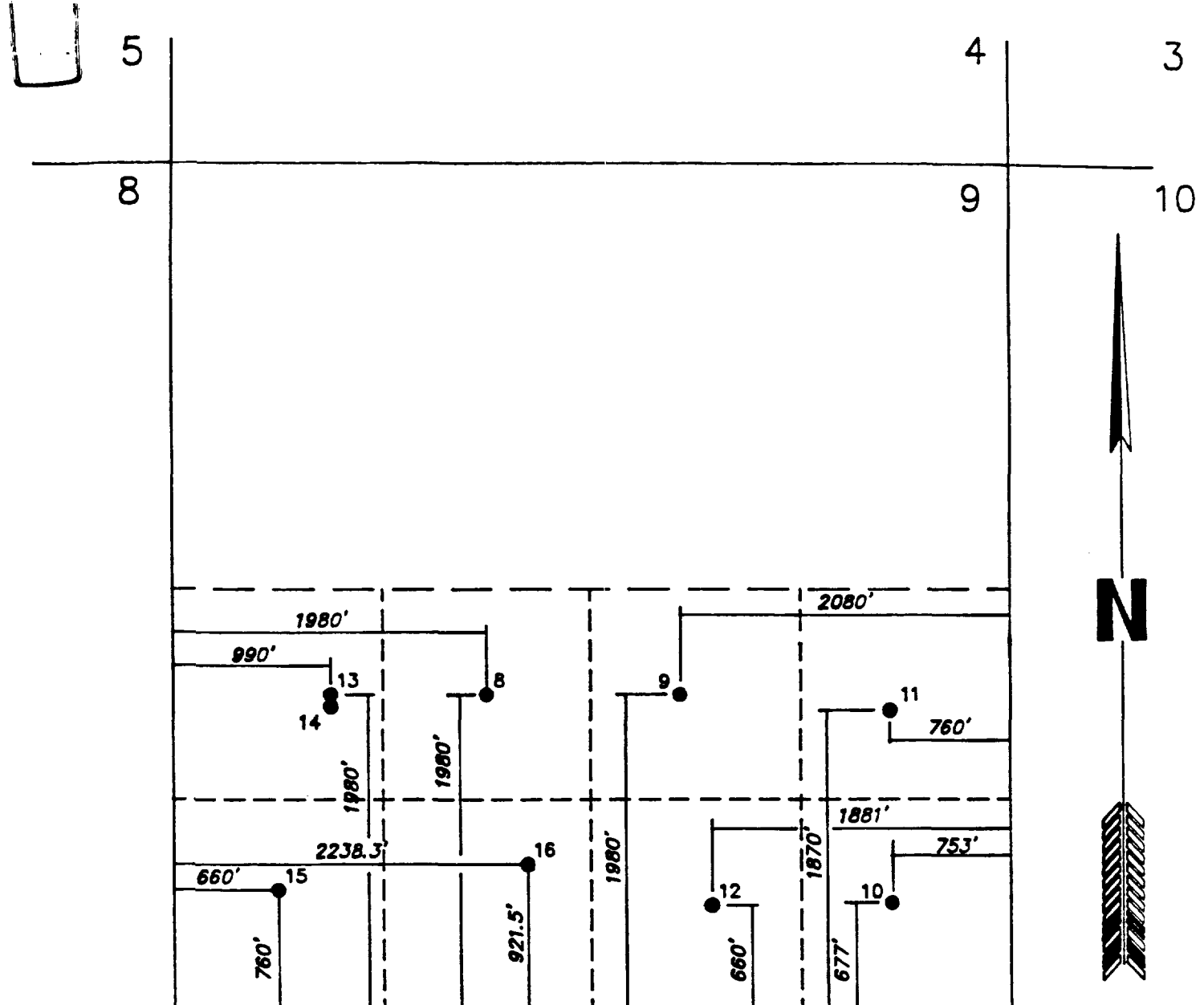
For your records, attached is an updated lease diagram with producing pools listed. If you have any questions concerning this, call me at (915) 688-7548.

Sincerely,



Stephen Johnson
Administrative Specialist

SJJ/kcs
Attachment



WELL NO.	POOL (S)
8	DRINKARD
9	PADDOCK
10	HARE SIMPSON
11	DRINKARD-OLINEBRY DHC-593
12	BRUNSON (ELLENBURGER)
13	OLINEBRY-TUBB R-6652
14	PADDOCK
15	PADDOCK
16	PADDOCK

J. L. GREENWOOD LEASE SEC. 9, T22S, R37E		EXXON COMPANY, U.S.A. A DIVISION OF EXXON CORPORATION PRODUCTION DEPARTMENT	
MISC. LEA CO., N.M.		JOB NO. FILE NO.	
DRAWN S.R. PATTERSON CHECKED _____	ENGR. SECTION _____ REVISED _____ APPROVED _____	SCALE 1"=1000' DATE 3-10-89	GRNWOOD