



February 7, 1996

Mr. William J. LeMay, Director  
New Mexico Oil Conservation Division  
2040 S. Pacheco Street  
P.O. Box 6429  
Santa Fe, NM 87505

**Southern**

**Rockies**

**Business**

**Unit**

**Application for Exception to Rule 303-A Surface Commingling**  
**Florance 68 - Basin Dakota Pool**  
**1190' FSL & 2510' FEL, Unit O Section 20-T27N-R8W**  
**Florance D LS #4A - Blanco Mesaverde Pool**  
**1310' FSL & 2190' FEL, Unit O Section 20-T27N-R8W**  
**San Juan County, New Mexico**

Amoco Production Company hereby requests administrative approval to surface commingle production from the Basin Dakota Pool for the Florance 68 well and the Blanco Mesaverde Pool for the Florance D LS #4A well. These wells are located in Unit O of Section 20-T27N-R8W, San Juan County, New Mexico. In support of this application, Amoco states the following:

1. Amoco is the operator of the Basin Dakota Pool underlying the south half of Section 20-T27N-R8W, San Juan County, New Mexico currently dedicated to the Florance 68 well.
2. Amoco is the operator of the Blanco Mesaverde Pool underlying the east half of Section 20-T27N-R8W, San Juan County, New Mexico currently dedicated to the Florance D LS #4A well.
3. The ownership (WI, RI, ORRI) is common for the pools which are proposed for surface commingling.
4. The surface commingling will offer an economical method of production using a single train of production equipment. Current production from the Dakota is 25 MCFD with 0.3 BCPD. The Florance D LS #4A is a newly drilled well and expected to produce 155 MCFD with 0.7 BCPD. We recommend allocating production based on annual well testing for the Dakota. Since the Mesaverde is a new well, we recommend quarterly well testing during the first year followed by annual well testing thereafter. Allocations would be percentages of total production based on the current well test for that formation.
5. The actual commercial value of the commingled production will not be less than the sum of the values of the production from each of the common sources of supply.

6. Approval of this application will otherwise be in the best interest of conservation, the prevention of waste, and the protection of correlative rights.

Attached to aid in your review is a plat showing the location and acreage dedicated to the wells, a historical production plot for the Dakota and a schematic of the proposed commingling installation. These spacing units involve two federal leases (NM-03380 and NM-14916) and a copy of the application will be sent to the Bureau of Land Management.

Sincerely,



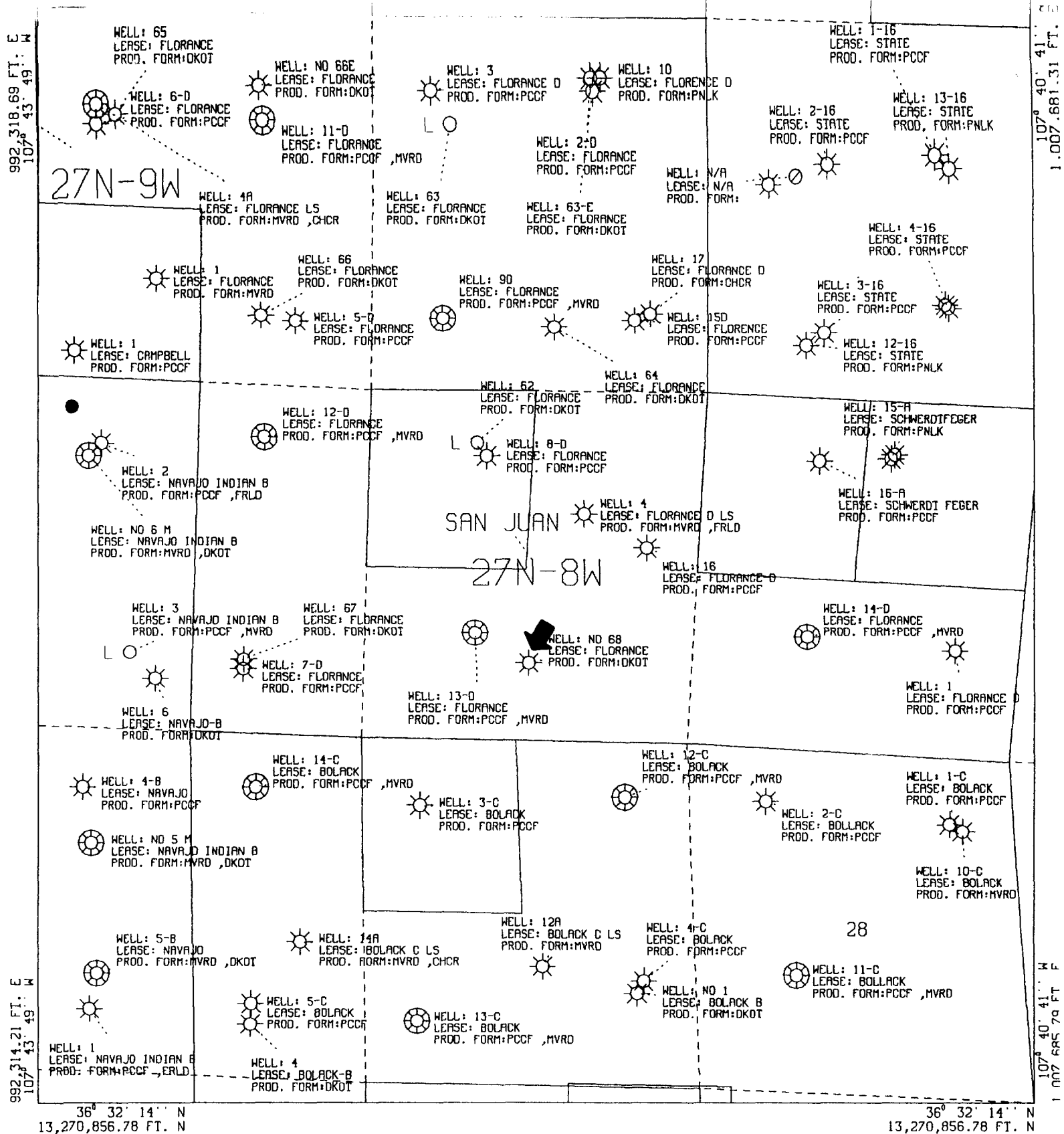
Pamela W. Staley

Attachments

cc: Mark Rothenberg  
Patty Haefele  
Wellfile  
Proration files

Frank Chavez, Supervisor  
NMOCD District III  
1000 Rio Brazos Road  
Aztec, NM 87410

Duane Spencer  
Bureau of Land Management  
1235 La Plata Hwy  
Farmington, NM 87401



All geological and geophysical data, including the interpretation thereof, appearing on this map is the private and confidential property of Amoco Production Company. The publication or reproduction thereof without the written permission of said Company is strictly prohibited.

AMOCO PRODUCTION COMPANY  
PLAT MAP  
Florance DLS 4 A  
9 - Section Plat

POLYCONIC CENTRAL MERIDIAN - 107° 42' 15" W LONG  
SPHEROID - 6

SCALE 1 IN. = 2,000 FT. MAR 21, 1995

# NEW MEXICO OIL CONSERVATION COMMISSION

## AMENDED WELL LOCATION AND ACERAGE DEDICATION PLAT TO CORRECT DEDICATED ACERAGE ONLY

All distances must be from the outer boundaries of the Section

Operator <b>TENNECO OIL COMPANY</b>		Lease <b>FIORANCE</b>		Well No <b>68</b>	
Unit Letter <b>0.</b>	Section <b>20</b>	Township <b>27 North</b>	Range <b>8 West</b>	County <b>San Juan</b>	
Actual Footage Location of Well: <b>1190</b> feet from the <b>South</b> line and <b>2510</b> feet from the <b>East</b> line					
Ground Level Elev. <b>6744' ungraded</b>	Producing Formation <b>Basin Dakota</b>		Pool <b>Basin Dakota</b>	Dedicated Acreage: <b>320 <del>1/2</del> 5/2</b> Acres	

- Outline the acreage dedicated to the subject well by colored pencil or hachure marks on the plat below.
- If more than one lease is dedicated to the well, outline each and identify the ownership thereof (both as to working interest and royalty).
- If more than one lease of different ownership is dedicated to the well, have the interests of all owners been consolidated by communization, unitization, force-pooling, etc?

( ) Yes ( ) No If answer is "yes," type of consolidation

If answer is "no," list the owners and tract descriptions which have actually consolidated. (Use reverse side of this form if necessary.)

No allowable will be assigned to the well until all interests have been consolidated (by communization, unitization, forced-pooling, or otherwise) or until a non standard unit, eliminating such interests, has been approved by the Commission.

### CERTIFICATION

I hereby certify that the information contained herein is true and complete to the best of my knowledge and belief.

Original Signed By  
**HAROLD C. NICHOLS**

Name **Harold C. Nichols**

Position

**Senior Production Clerk**

Company

**Tenneco Oil Company**

Date

**June 7, 1966**

I hereby certify that the well location shown on this plat was plotted from field notes of actual surveys made by me or under my supervision, and that the same is true and correct to the best of my knowledge and belief.

**4 June 1966**

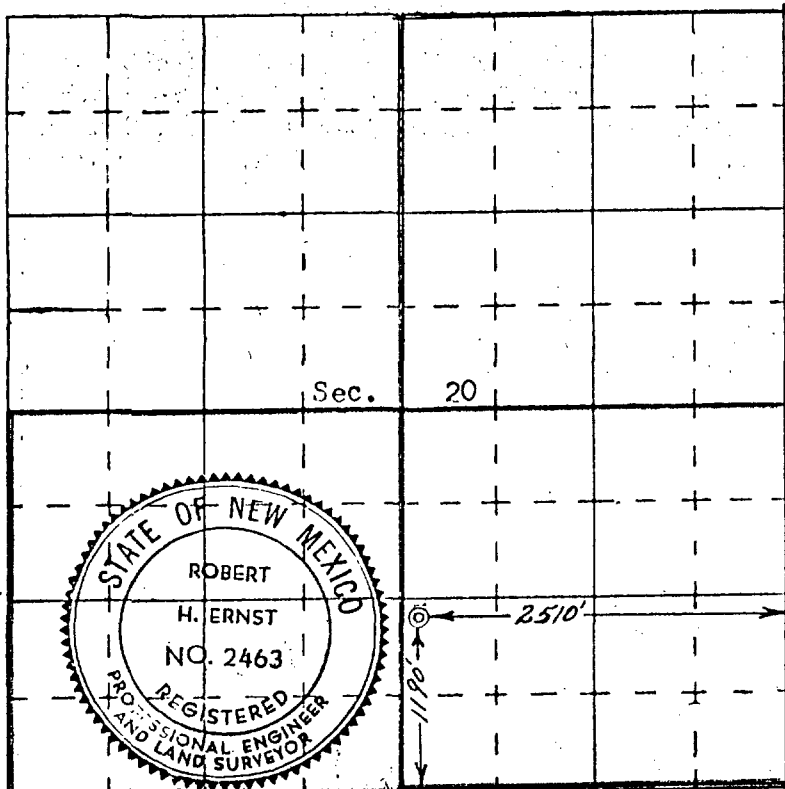
Date Surveyed

*Robert H. Ernst*  
Registered Professional Engineer  
and/or Land Surveyor

**Robert H. Ernst**

**N. Mex. P.E. & L.S. 2463**

Certificate No.



District I  
PO Box 1980, Hobbs, NM 88241-1980  
District II  
PO Drawer DD, Artesia, NM 88211-0719  
District III  
1000 N. Brazos Rd., Aztec, NM 87410  
District IV  
PO Box 2088, Santa Fe, NM 87504-2088

State of New Mexico  
Energy, Minerals & Natural Resources Department

OIL CONSERVATION DIVISION  
PO Box 2088  
Santa Fe, NM 87504-2088

Form C-102  
Revised February 21, 1994  
Instructions on back  
Submit to Appropriate District Office  
State Lease - 4 Copies  
Fee Lease - 3 Copies

☒ AMENDED REPORT

WELL LOCATION AND ACREAGE DEDICATION PLAT

Revise Elev. 3-23-95

API Number		Pool Code		Pool Name	
Property Code		FLORANCE DLS			Well Number # 4 A
OGRID No.		AMOCO PRODUCTION COMPANY			Elevation 6737

10 Surface Location

UL or lot no.	Section	Township	Range	Lot Idn	Feet from the	North/South line	Feet from the	East/West line	County
O	20	27 N	8 W		1310	SOUTH	2190	EAST	SAN JUAN

11 Bottom Hole Location If Different From Surface

UL or lot no.	Section	Township	Range	Lot Idn	Feet from the	North/South line	Feet from the	East/West line	County
Dedicated Acres		Joint or Infill		Consolidation Code		Order No.			

NO ALLOWABLE WILL BE ASSIGNED TO THIS COMPLETION UNTIL ALL INTERESTS HAVE BEEN CONSOLIDATED  
OR A NON-STANDARD UNIT HAS BEEN APPROVED BY THE DIVISION

16					<p>17 OPERATOR CERTIFICATION</p> <p>I hereby certify that the information contained herein is true and complete to the best of my knowledge and belief</p> <p>Signature _____</p> <p>Printed Name _____</p> <p>Title _____</p> <p>Date _____</p>
					<p>18 SURVEYOR CERTIFICATION</p> <p>I hereby certify that the well location shown on this plat was plotted from field notes of actual surveys made by me or under my supervision, and that the same is true and correct to the best of my belief.</p> <p>February 23, 1995</p> <p>Date of Survey</p> <p>Signature and Seal of Professional Surveyor: _____</p> <p>7016</p> <p>Certificate Number</p>

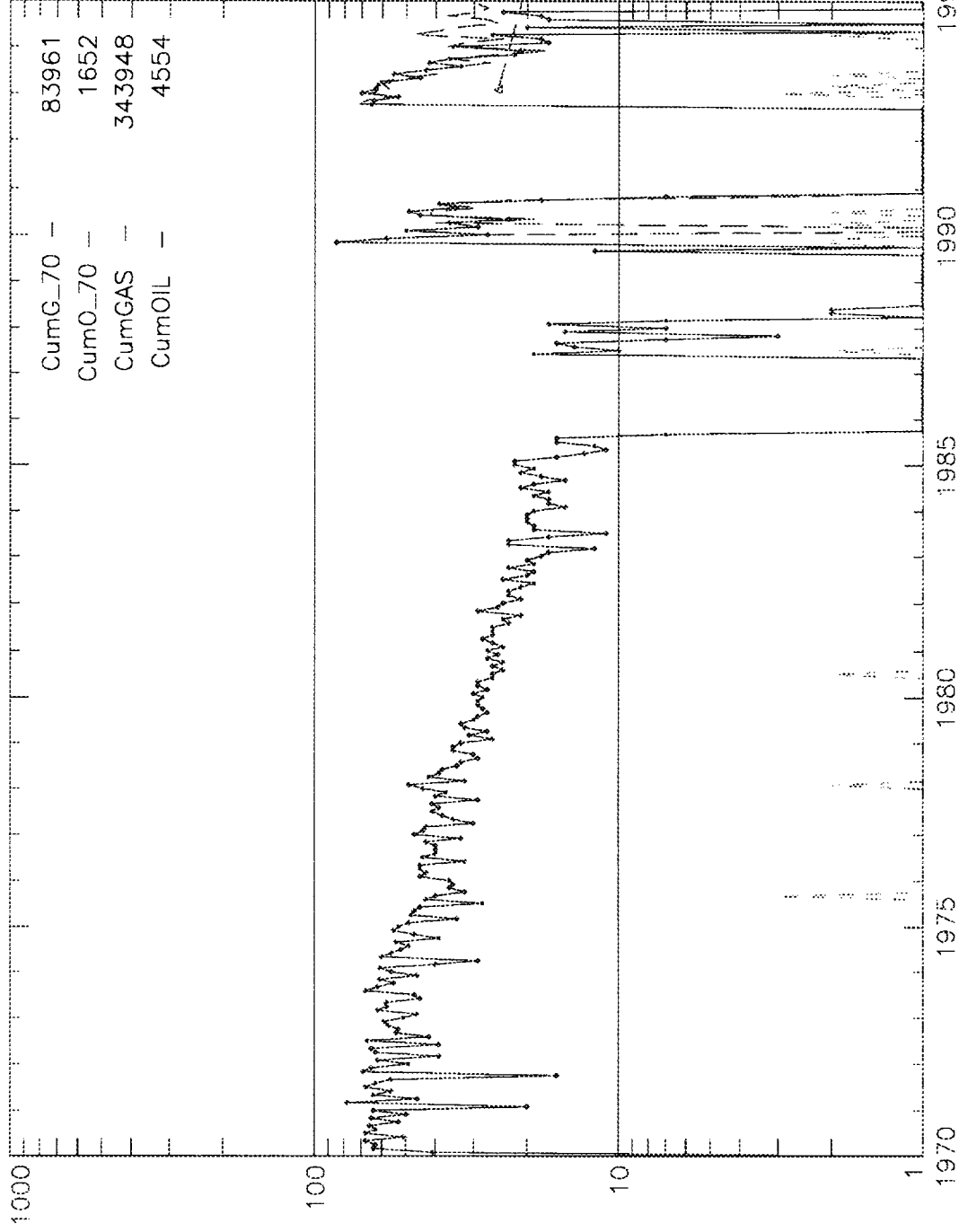
Engr: zr06

FLORANCE 68

Operator- AMOCO PRODUCTION CO

300451178200DK O202708-068 DK

APC\_WI - 1.0000000



Curr\_Fit

DCLN  
CurrQ  
RemRes  
EUR  
Fit\_date

1993 8

New\_fit

DCLN  
CurrQ  
RemRes  
EUR  
Fit\_date

AMOCO PRODUCTION COMPANY  
SAN JUAN OPERATIONS CENTER  
FARMINGTON, NM

ONSHORE FEDERAL AND INDIAN  
SITE FACILITY DIAGRAM

LEASE NAME & WELL NUMBER\_\_Florance 68 and D LS 4A proposed commingle\_\_

LEASE NUMBER \_\_\_\_\_ COMMUNITIZATION NUMBER \_\_\_\_\_

LOCATION            SEC            T            R

This diagram subject to site security plan for NewMexico

Sealed valves are normally closed during production phase. Drain line valve to pit open to draw off water and load line valve open to sell condensate.

Date \_\_8/7/95\_\_

