

PC

N/R

983

VERBAL OK TO
BETTY EPIE.

8-10-98

M

**WISER**

July 23, 1998

Attn: Surface Commingling Department
 State of New Mexico
 Oil Conservation Division
 2040 South Pacheco St
 Santa Fe, NM 87505

Re: Surface Commingling

Dear Sirs:

The Wiser Oil Company, as operator of the following wells and leases in Lea County, New Mexico, hereby requests permission to commingle at the surface all oil and gas production from these wells. All working and revenue interests are common between the leases. Production will be allocated based on well tests. Gravity ranges from 34.5 to 37.9 and is under one oil contract. GPM, the gas purchaser, has determined all gas to be similar in content and is paying under one contract.


WELL	POOL	GRAVITY	PRICE \$	OIL PROD 5/98	VALUE
Downes A #5	Penrose Skelly Grayburg	34.5	13.77	67	\$ 923
Downes D #1	Blinebry O&G	37.9	13.77	184	\$2,534
Downes D #2	Tubbs O&G	37.9	13.77	73	\$1,005
Downes D #3	Blinebry O&G	37.9	13.77	184	\$2,534
Downes D #4	Drinkard	37.9	13.77	32	\$ 441

Surface commingling of these wells has no impact on current production or value, but maintenance of one battery instead of two will, over time, reduce expenses and thus extend the life of the project.

Attached please find a listing of production volumes from these wells, a schematic diagram, a map showing all of the wells, and C-102s for each of the individual wells.

If you have any questions, please advise. Thank you.

Sincerely,

A handwritten signature in cursive script that reads "Betty Epie".

Betty Epie
Production Administrator

DOWNES PRODUCTION

07/21/98 17:26:24

LEASE NUMBER	WELL NUMBER	WELL NAME	PROD YEAR	PROD MONTH	OIL PROD	GAS PRODUCED
--------------	-------------	-----------	-----------	------------	----------	--------------

1395	001	S2 DOWNES, A. D#1	1998	1	218	6,178
		S2 DOWNES, A. D#1	1998	2	166	4,797
		S2 DOWNES, A. D#1	1998	3	203	5,194
		S2 DOWNES, A. D#1	1998	4	232	5,545
		S2 DOWNES, A. D#1	1998	5	184	4,007

TOTAL

1395	002	S1 DOWNES, A. D#2	1998	1	164	531
		S1 DOWNES, A. D#2	1998	2	176	481
		S1 DOWNES, A. D#2	1998	3	182	584
		S1 DOWNES, A. D#2	1998	4	193	567
		S1 DOWNES, A. D#2	1998	5	73	319

TOTAL

1395	003	S2 DOWNES, A. D#3	1998	1	218	1,121
		S2 DOWNES, A. D#3	1998	2	211	918
		S2 DOWNES, A. D#3	1998	3	217	1,112
		S2 DOWNES, A. D#3	1998	4	232	1,080
		S2 DOWNES, A. D#3	1998	5	184	1,254

TOTAL

1395	004	S1 DOWNES, A. D#4	1998	1	36	224
		S1 DOWNES, A. D#4	1998	2	35	183
		S1 DOWNES, A. D#4	1998	3	37	222
		S1 DOWNES, A. D#4	1998	4	33	187
		S1 DOWNES, A. D#4	1998	5	32	251

TOTAL

1395	005	S1 DOWNES, A. A #5	1998	1	53	260
		S1 DOWNES, A. A #5	1998	2	52	265
		S1 DOWNES, A. A #5	1998	3	46	334
		S1 DOWNES, A. A #5	1998	4	47	324
		S1 DOWNES, A. A #5	1998	5	67	376

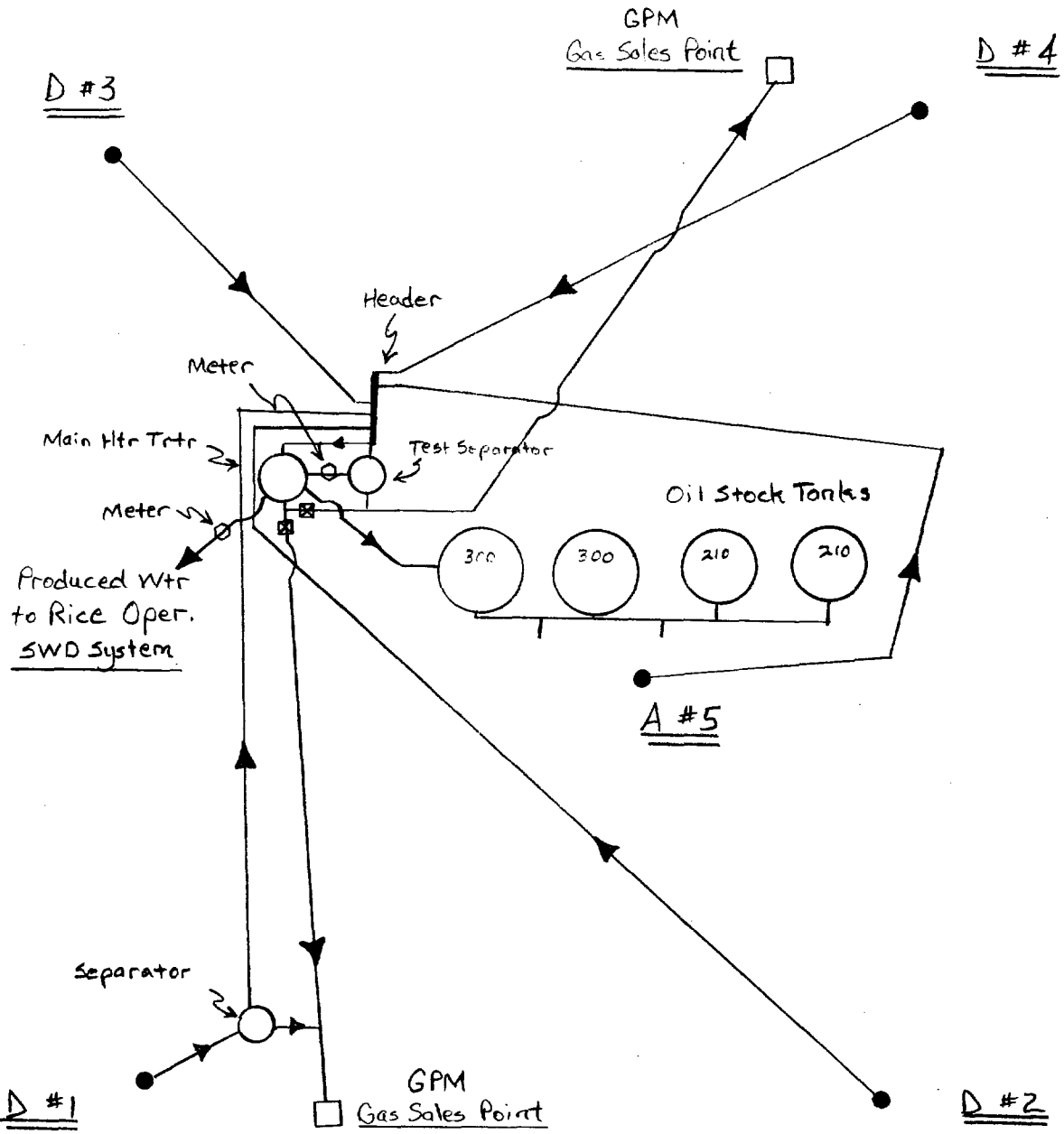
TOTAL

* * * END OF REPORT * * *

ME

7/23/98

DOWNES A & D LEASE COMINGLED TANK BATTERY (PROPOSED)



'NOT TO SCALE'

22-141 50 SHEETS
22-142 100 SHEETS
22-144 200 SHEETS



The image displays a 10x10 grid of 100 numbered squares, each representing a different brand of oil or gas. The brands are listed in a grid-like fashion, with each square containing a number and a small graphic (star or circle). The brands include Chevron, Mobil, Texaco, Amoco, Shell, and many others. The grid is organized into 10 rows and 10 columns.

101	102	103	104	105	106	107	108	109	110
111	112	113	114	115	116	117	118	119	120
121	122	123	124	125	126	127	128	129	130
131	132	133	134	135	136	137	138	139	140
141	142	143	144	145	146	147	148	149	150
151	152	153	154	155	156	157	158	159	160
161	162	163	164	165	166	167	168	169	170
171	172	173	174	175	176	177	178	179	180
181	182	183	184	185	186	187	188	189	190
191	192	193	194	195	196	197	198	199	200

**NEW MEXICO OIL CONSERVATION COMMISSION
WELL LOCATION AND ACREAGE DEDICATION PLAT**

Form O-1
Supersedes O-128
Effective 12-1-85

All distances must be from the outer boundaries of the Section

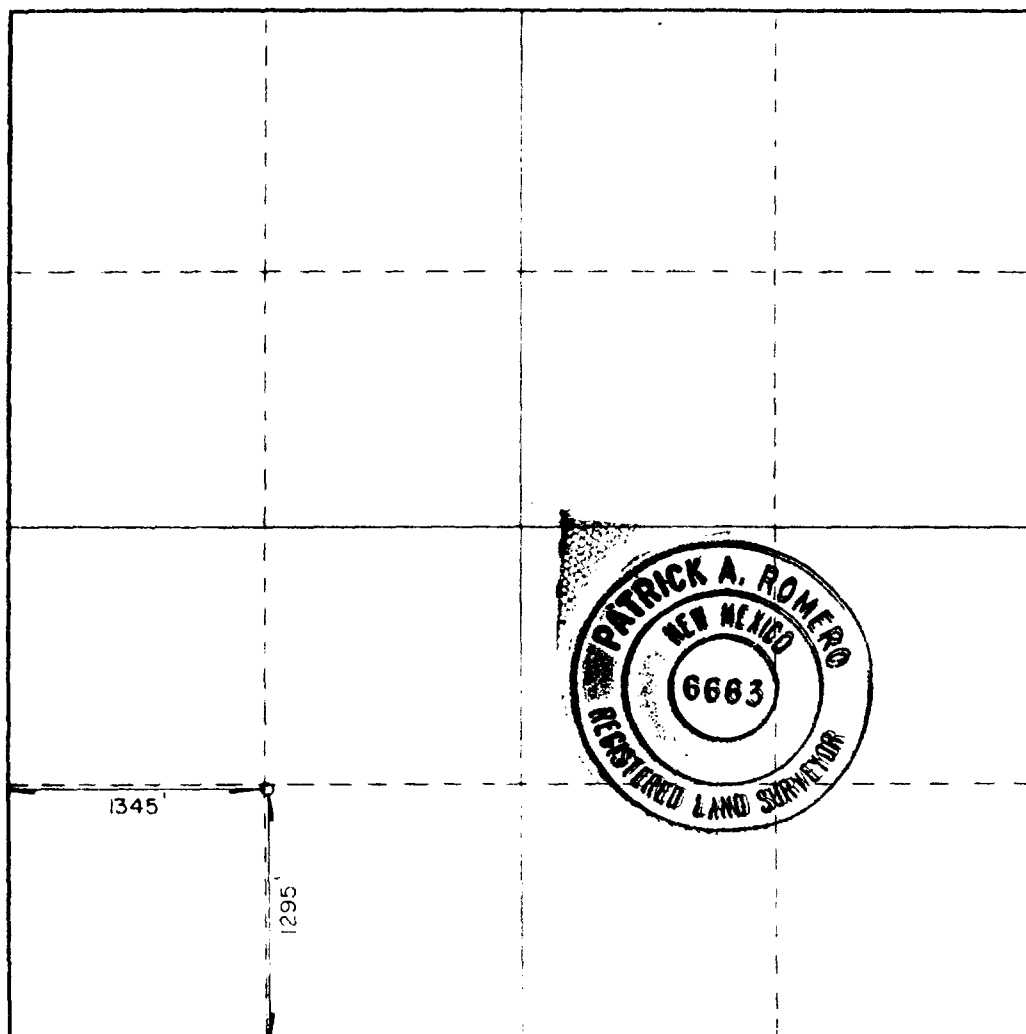
Lessor The Wiser Oil Company			Lease Downes "A"		Acres 5
Unit Letter N	Section 32	Township 21 South	Range 37 East	County Lea	
Actual Footage Location of Well: 1295 feet from the south line and 1345 feet from the west line					
Ground Level Elev. 3462.3'	Producing Formation		Pool	Estimated Acreage	

1. Outline the acreage dedicated to the subject well by colored pencil or hachure marks on the plat below.
2. If more than one lease is dedicated to the well, outline each and identify the ownership thereof (both as to working interest and royalty).
3. If more than one lease of different ownership is dedicated to the well, have the interests of all owners been consolidated by communitization, unitization, force-pooling, etc?

☐ Yes ☐ No If answer is "yes," type of consolidation _____

If answer is "no," list the owners and tract descriptions which have actually been consolidated. (Use reverse side of this form if necessary.) _____

No allowable will be assigned to the well until all interests have been consolidated (by communitization, unitization, forced-pooling, or otherwise) or until a non-standard unit, eliminating such interests, has been approved by the Commission.



CERTIFICATION

I hereby certify that the information contained herein is true and complete to the best of my knowledge and belief.

Name _____

Position _____

Company _____

Date _____

I hereby certify that the well location shown on this plat was plotted from field notes of actual surveys made by me or under my supervision, and that the same is true and correct to the best of my knowledge and belief.

Date Surveyed

10-3-81

Registered Professional Engineer
and/or Land Surveyor

Patrick A. Romero

 JOHN W. WEST 474

Submit to Appropriate
District Office
State Lease - 4 copies
Fee Lease - 3 copies

State of New Mexico
Energy, Minerals and Natural Resources Dep

Form C-102
Revised 1-1-89

OIL CONSERVATION DIVISION

P.O. Box 2088

Santa Fe, New Mexico 87504-2088

DISTRICT I

P.O. Box 1980, Hobbs, NM 88240

DISTRICT II

P.O. Drawer DD, Artesia, NM 88210

DISTRICT III

1000 Rio Brazos Rd., Aztec, NM 87410

WELL LOCATION AND ACREAGE DEDICATION PLAT

All Distances must be from the outer boundaries of the section

Operator The Wiser Oil Company			Lease Downes D		Well No. 1
Unit Letter K	Section 32	Township 21S	Range 37E	County NMPM Lea	
Actual Footage Location of Well: 1980 feet from the South line and 2080 feet from the West line					
Ground level Elev. 3466	Producing Formation Tubb		Pool Blinebry Oil & Gas		Dedicated Acreage: 40 Acres

1. Outline the acreage dedicated to the subject well by colored pencil or hatchure marks on the plat below.

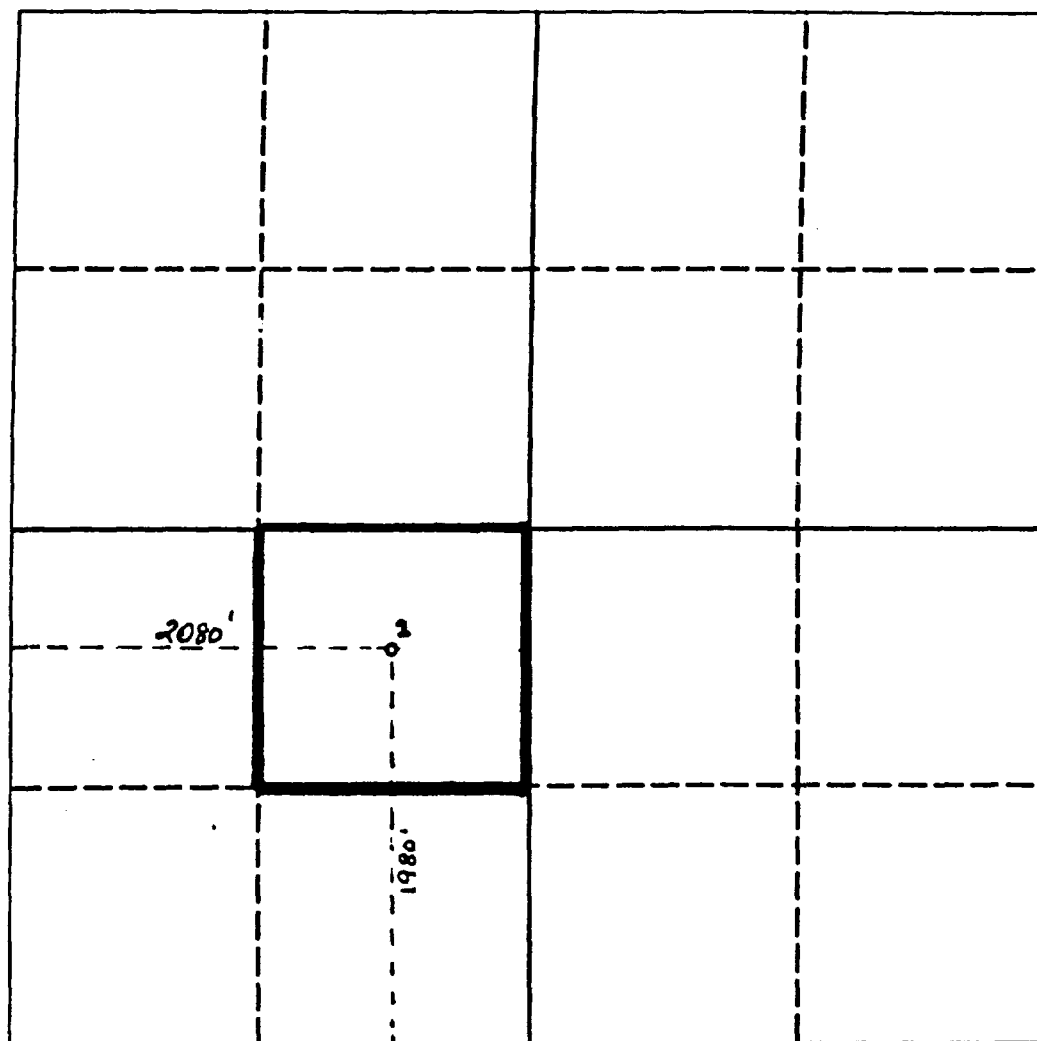
2. If more than one lease is dedicated to the well, outline each and identify the ownership thereof (both as to working interest and royalty).

3. If more than one lease of different ownership is dedicated to the well, have the interest of all owners been consolidated by communitization, unitization, force-pooling, etc.?

☐ Yes ☐ No If answer is "yes" type of consolidation _____

If answer is "no" list the owners and tract descriptions which have actually been consolidated. (Use reverse side of this form if necessary.)

No allowable will be assigned to the well until all interests have been consolidated (by communitization, unitization, forced-pooling, or otherwise) or until a non-standard unit, eliminating such interest, has been approved by the Division.



OPERATOR CERTIFICATION

I hereby certify that the information contained herein is true and complete to the best of my knowledge and belief.

Susan Hopper
Signature

Susan Hopper

Printed Name

Production Administrator

Position

The Wiser Oil Company

Company

8/9/96

Date

SURVEYOR CERTIFICATION

I hereby certify that the well location shown on this plat was plotted from field notes of actual surveys made by me or under my supervision, and that the same is true and correct to the best of my knowledge and belief.

Date Surveyed

Signature & Seal of
Professional Surveyor

Certificate No.

0 330 660 990 1320 1650 1980 2310 2640 2000 1500 1000 500 0

District I
PO Box 1980, Hobbs, NM 88241-1980
District II
811 South First, Artesia, NM 88210
District III
1000 Rio Brazos Rd., Aztec, NM 87410
District IV
2040 South Pacheco, Santa Fe, NM 87505

State of New Mexico
Energy, Minerals & Natural Resources Department

OIL CONSERVATION DIVISION
2040 South Pacheco
Santa Fe, NM 87505

Form C-102
Revised October 18, 1994
Instructions on back
Submit to Appropriate District Office
State Lease - 4 Copies
Fee Lease - 3 Copies

☐ AMENDED REPORT

WELL LOCATION AND ACREAGE DEDICATION PLAT

¹ API Number 30-025-06955		² Pool Code 60240		³ Pool Name Tubb Oil & Gas	
⁴ Property Code 11835		⁵ Property Name Downes D			⁶ Well Number 2
⁷ OGRID No. 022922		⁸ Operator Name The Wiser Oil Company			⁹ Elevation 3458

¹⁰ Surface Location

UL or lot no. L	Section 32	Township 21S	Range 37E	Lot Idn	Feet from the 1980	North/South line S	Feet from the 810	East/West line W	County Lea
--------------------	---------------	-----------------	--------------	---------	-----------------------	-----------------------	----------------------	---------------------	---------------

¹¹ Bottom Hole Location If Different From Surface

UL or lot no.	Section	Township	Range	Lot Idn	Feet from the	North/South line	Feet from the	East/West line	County
¹² Dedicated Acres 40		¹³ Joint or Infill		¹⁴ Consolidation Code		¹⁵ Order No.			

NO ALLOWABLE WILL BE ASSIGNED TO THIS COMPLETION UNTIL ALL INTERESTS HAVE BEEN CONSOLIDATED
OR A NON-STANDARD UNIT HAS BEEN APPROVED BY THE DIVISION

<p>16</p>				<p>17 OPERATOR CERTIFICATION</p> <p>I hereby certify that the information contained herein is true and complete to the best of my knowledge and belief</p> <p><i>Matt Eagleston</i></p> <p>Signature Matt Eagleston</p> <p>Printed Name Project Manager</p> <p>Title 6/17/98</p> <p>Date</p>	
				<p>18 SURVEYOR CERTIFICATION</p> <p>I hereby certify that the well location shown on this plat was plotted from field notes of actual surveys made by me or under my supervision, and that the same is true and correct to the best of my belief.</p> <p>Date of Survey</p> <p>Signature and Seal of Professional Surveyer:</p> <p>Certificate Number</p>	

District I
PO Box 1980, Hobbs, NM 88241-1980
District II
811 South First, Artesia, NM 88210
District III
1000 Rio Brazos Rd., Aztec, NM 87410
District IV
2040 South Pacheco, Santa Fe, NM 87505

State of New Mexico
Energy, Minerals & Natural Resources Department

OIL CONSERVATION DIVISION
2040 South Pacheco
Santa Fe, NM 87505

Form C-102
Revised October 18, 1994
Instructions on back
Submit to Appropriate District Office
State Lease - 4 Copies
Fee Lease - 3 Copies

☐ AMENDED REPORT

WELL LOCATION AND ACREAGE DEDICATION PLAT

1 API Number 30-025-6956		2 Pool Code 15298		3 Pool Name Blinebry Oil & Gas	
4 Property Code 15298		5 Property Name Downes D			6 Well Number 3
7 OGRID No. 139036		8 Operator Name The Wiser Oil Company			9 Elevation 3466'

10 Surface Location


UL or lot no.	Section	Township	Range	Lot Idn	Feet from the	North/South line	Feet from the	East/West line	County
N	32	21S	37		660	South	2130	West	Lea

11 Bottom Hole Location If Different From Surface

UL or lot no.	Section	Township	Range	Lot Idn	Feet from the	North/South line	Feet from the	East/West line	County

12 Dedicated Acres 40	13 Joint or Infill N	14 Consolidation Code N/A	15 Order No.
---------------------------------	--------------------------------	-------------------------------------	--------------

NO ALLOWABLE WILL BE ASSIGNED TO THIS COMPLETION UNTIL ALL INTERESTS HAVE BEEN CONSOLIDATED OR A NON-STANDARD UNIT HAS BEEN APPROVED BY THE DIVISION

16				17 OPERATOR CERTIFICATION <i>I hereby certify that the information contained herein is true and complete to the best of my knowledge and belief.</i>  Signature Susan Hopper Printed Name Production Administrator Title 9/3/96 Date
				18 SURVEYOR CERTIFICATION <i>I hereby certify that the well location shown on this plat was plotted from field notes of actual surveys made by me or under my supervision, and that the same is true and correct to the best of my belief.</i> Date of Survey Signature and Seal of Professional Surveyer: Certificate Number

NEW MEXICO OIL CONSERVATION COMMISSION
WELL LOCATION AND ACREAGE DEDICATION PLAT

Form C-102
 Supersedes C-128
 Effective 11-65

All distances must be from the outer boundaries of the Section

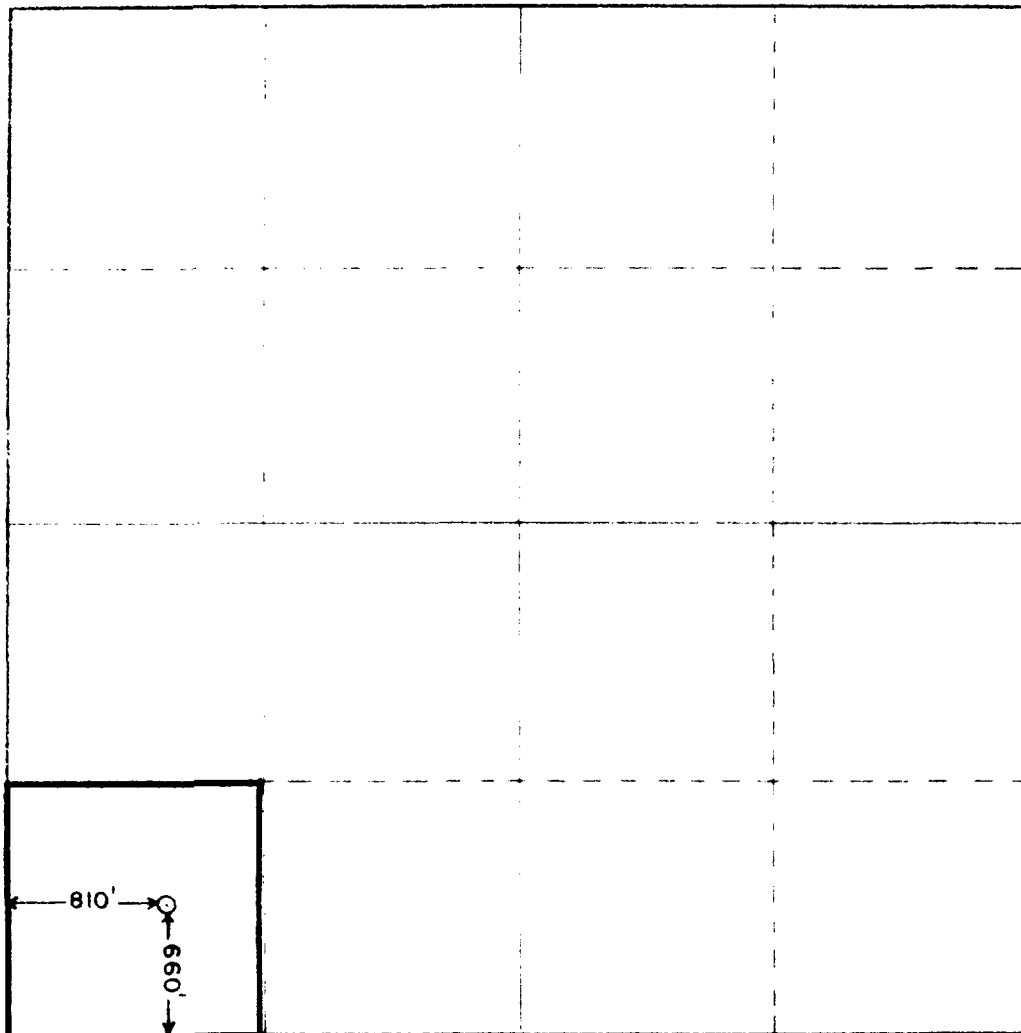
Owner WISER OIL COMPANY			Lease DOWNES "D"		Well No. 4
Section M	Section 32	Township 21 S	Range 37 E	County LEA	
Distance from the WEST line and 660 feet from the SOUTH line					
Ground Level Elev 3464	Producing Formation Drinkard		Pool Drinkard		Dedicated Acreage 40 Acres

- 1 Outline the acreage dedicated to the subject well by colored pencil or hachure marks on the plat below.
- 2 If more than one lease is dedicated to the well, outline each and identify the ownership thereof (both as to working interest and royalty)
- 3 If more than one lease of different ownership is dedicated to the well, have the interests of all owners been consolidated by communitization, unitization, force-pooling, etc?

☐ Yes ☐ No If answer is "yes," type of consolidation _____

If answer is "no," list the owners and tract descriptions which have actually been consolidated. (Use reverse side of this form if necessary.) _____

No allowable will be assigned to the well until all interests have been consolidated (by communitization, unitization, forced-pooling, or otherwise) or until a non-standard unit, eliminating such interests, has been approved by the Commission.



CERTIFICATION

I hereby certify that the information contained herein is true and complete to the best of my knowledge and belief.

B.D. Singletary
 Name

B.D. Singletary

Position

District Supt.

Company

The Wiser Oil Company

Date

October 23, 1973

I hereby certify that the well location shown on this plat was plotted from field notes of actual surveys made by me or under my supervision, and that the same is true and correct to the best of my knowledge and belief.

Date Surveyed

OCTOBER 22, 1973

Registered Professional Engineer
 and/or Land Surveyor

John West
 Certificate No.

676