



STATE OF NEW MEXICO
ENERGY, MINERALS AND NATURAL RESOURCES DEPARTMENT
OIL CONSERVATION DIVISION



BRUCE KING
GOVERNOR

ANITA LOCKWOOD
CABINET SECRETARY

POST OFFICE BOX 2088
STATE LAND OFFICE BUILDING
SANTA FE, NEW MEXICO 87501
(505) 827-5800

COMMINGLING ORDER PLC-98

Meridian Oil Company
P.O. Box 51810
Midland, Texas 79710-1810

Attention: Donna J. Williams

The above-named company is hereby authorized to commingle West Corbin Delaware and South Corbin Wolfcamp Pool production from the following leases:

LEASE NAME: Federal "21" Lease
DESCRIPTION: NE/4 NW/4, E/2 SW/4, Section 21, Township 18 South, Range 33 East
NMPM

LEASE NAME: Federal "MA" Lease
DESCRIPTION: N/2 SW/4, Section 21, Township 18 South, Range 33 East, NMPM

Both in Lea County, New Mexico


Production shall be allocated to each lease by separately metering the production from each lease prior to commingling.

NOTE: This installation shall be installed and operated in accordance with the applicable provisions of Rule 309-B of the Division Rules and Regulations and the Division "Manual for the Installation and Operation of Commingling Facilities." It is the responsibility of the producer to notify the transporter of this commingling authority.

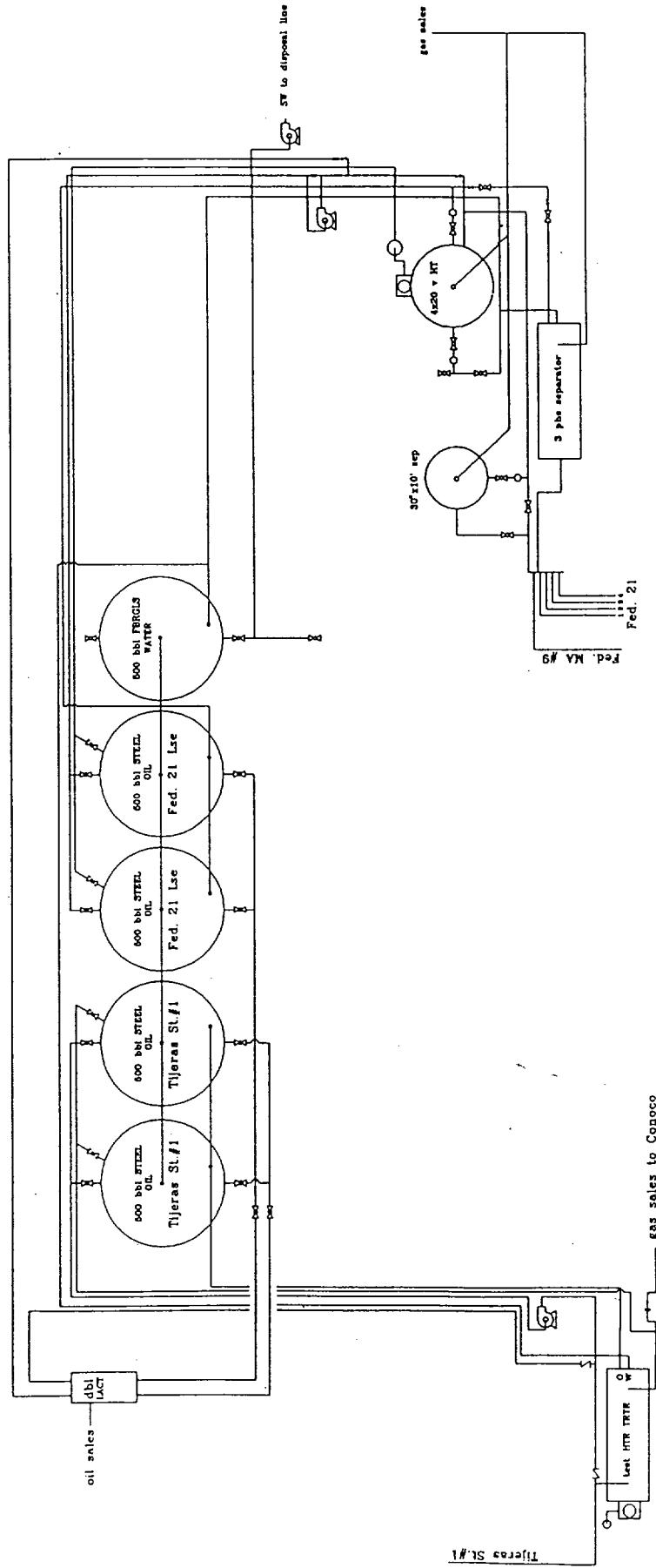
FURTHER: The operator shall notify the supervisor of the Hobbs District office prior to implementation of the commingling process.

REMARKS: Commingled production shall be stored in the Federal "21" tank battery located in unit letter "K" of the above mentioned Section, Township and Range.

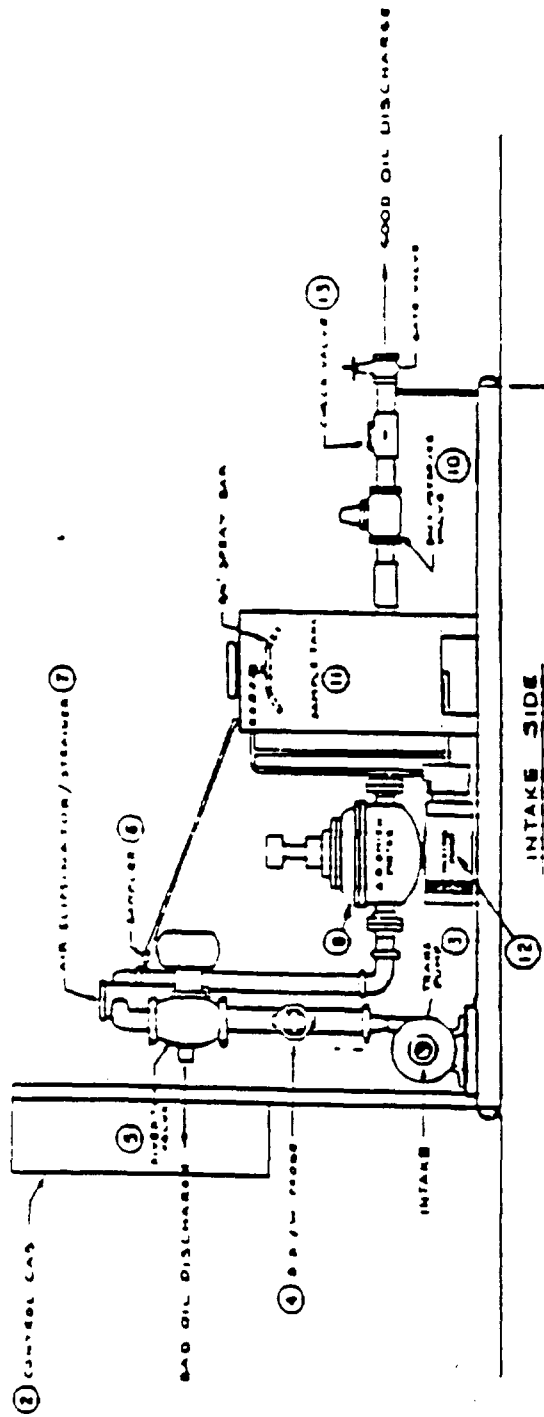
DONE at Santa Fe, New Mexico, on this 28th day of January, 1993.


WILLIAM J. LEMAY,
Division Director

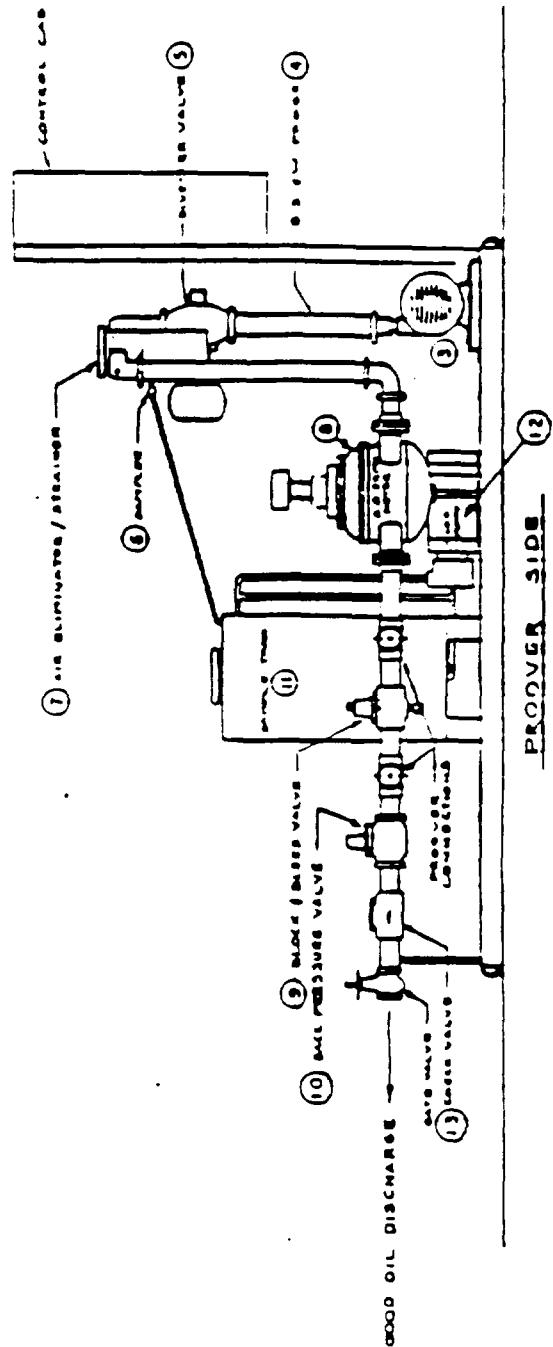
cc: Oil Conservation Division - Hobbs
State Land Office - Oil & Gas Division
U.S. BLM - Carlsbad



MOI FEDERAL 21 BATTERY		REFERENCE DRAWINGS		REVISIONS		MERIDIAN OIL INC MIDLAND, TEXAS	
						ENGR.	
						DATE	
						ENGR. SUPV.	
						DATE	
						c:\acad10\hobbs\red21.dwg	
						DATE	
						rjc	
						DATE	
						December 15, 1992	
						DATE	



NOTE:
1. S. P. W. MONITOR TO BE
1. MONITOR TO BE
1. MONITOR TO BE



LACT UNIT

American

