

AMEND PLC 7/14/98

Mid-Continent Region  
Production United States

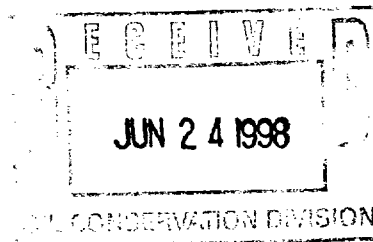


**Marathon  
Oil Company**

P.O. Box 552  
Midland, TX 79702-0552  
Telephone 915/682-1626

June 22, 1998

New Mexico Oil Conservation Division  
Attn: Mr. Ben Stone  
2040 South Pacheco  
Santa Fe, NM 87505



RE: Amend PLC-124

Dear Mr. Stone:

Marathon Oil Company requests that Commingling Order PLC-124 be amended to allow the liquid hydrocarbon production from the Indian Hills State Com Lease in Section 36, T-20-S, R-24-E, to be stored in the tanks at the MOC Central Battery located in Unit Letter D of Section 1, T-21-S, R-23-E. The Indian Hills State Com, Lease No. E-10083, has a separator located at each well so the production will be measured on lease and then transported via pipeline to the central facility for storage and sales. This lease produces from the South Dagger Draw Upper Penn Pool. PLC-124 authorizes the surface commingling of production from the Indian Basin Upper Penn (Associated-33685) Pool and the South Dagger Draw Upper Penn (Associated-15475) Pool. A copy of this order is attached.

Attached is a more detailed description of the proposed operation and allocation of production, a map of the area, and flow diagrams of the facilities and equipment involved. All interest owners have been notified of Marathon's intentions by certified mail. A copy of the letter and a list of the interest owners are attached.

Sincerely,

A handwritten signature in cursive script that reads 'A. B. Schoffmann'.

A. B. Schoffmann  
Indian Basin Asset Manager

ABS/vll\m:\wperfect\ihscnibu1\ocdltr.wpd

Attachments

**REQUEST FOR AMENDMENT TO PLC-124  
ADDING INDIAN HILLS STATE COM LEASE  
SOUTH DAGGER DRAW FIELD  
EDDY COUNTY, NEW MEXICO**

**Production Allocation - Well**

**OIL AND WATER**

Daily gross production for the consolidated facility will be based on daily oil sales and daily tank gauges.

$$\text{Production} = \text{Oil sales} + \text{Tank Gauge Change}$$

Daily oil and water production will be allocated back to each well based on its daily oil meter readings.

**Production Facilities**

There is a three-phase separator at each wellsite. Oil production will be metered through a turbine meter. Taps will be installed to accommodate meter proving.

Water production will be metered utilizing turbine meters. Taps will be installed on the water meters to accommodate meter proving.

After separation the oil from these wells will be transported to the MOC central tank battery, located in Unit letter D of Section 1, T-21-S, R-23-E. The water will be sent directly to the Indian Hills State Com #7 SWD well for disposal.

**Production Facilities - Consolidated Battery**

Oil production delivered to the consolidated battery will be further processed through the heater treater prior to storage at the tank battery. Sales will be accomplished through a LACT meter per prior approval.

Gas production delivered to the consolidated facility will be compressed, further processed through a dehydrator, and transported through a common trunkline to the Indian Basin Gas Plant. After processing, the gas and NGLs will be measured and sold at the tailgate of the plant.

The production from each pool will continue to be separately metered prior to commingling. Production from all the other leases will continue to be allocated to each well and lease by well tests.

UNITED STATES  
DEPARTMENT OF THE INTERIOR  
BUREAU OF LAND MANAGEMENT

FORM APPROVED  
Budget Bureau No. 1004-0135  
Expires: March 31, 1993

SUNDRY NOTICES AND REPORTS ON WELLS

Do not use this form for proposals to drill or to deepen or reentry to a different reservoir.

Use "APPLICATION FOR PERMIT -" for such proposals

SUBMIT IN TRIPLICATE

1. Type of Well

☐ Oil Well ☐ Gas Well ☐ Other

2. Name of Operator

Marathon Oil Company

3. Address and Telephone No.

P.O. Box 552 Midland, TX 79702

915/682-1626

4. Location of Well (Footage, Sec., T., R., M., or Survey Description)

Sections 1, 2, 3, 10, 11, 12 of T-21-S, R-23-E and  
Section 36 of T-20 1/2-S, R-23-E and  
Section 36 of T-20-S, R-24-E

5. Lease Designation and Serial No.

SEE ATTACHMENTS

6. If Indian, Allottee or Tribe Name

7. If Unit or CA, Agreement Designation

INDIAN HILLS STATE COM

8. Well Name and No.

SEE ATTACHMENT

9. API Well No.

10. Field and Pool, or exploratory Area

SOUTH DAGGER DRAW UPPER PENN  
& INDIAN BASIN UPPER PENN

11. County or Parish, State

EDDY NM

12. CHECK APPROPRIATE BOX(s) TO INDICATE NATURE OF NOTICE, REPORT, OR OTHER DATA

TYPE OF SUBMISSION

- ☒ Notice of Intent  
☐ Subsequent Report  
☐ Final Abandonment Notice

TYPE OF ACTION

- ☐ Abandonment  
☐ Recompletion  
☐ Plugging Back  
☐ Casing Repair  
☐ Altering Casing  
☒ Other SURFACE COMMINGLING  
☐ Change of Plans  
☐ New Construction  
☐ Non-Routine Fracturing  
☐ Water Shut-Off  
☐ Conversion to Injection  
☐ Dispose Water

(Note: Report results of multiple completion on Well Completion or Recompletion Report and Log form.)

13. Describe Proposed or Completed Operations (Clearly state all pertinent details, and give pertinent dates, including estimated date of starting any proposed work. If well is directionally drilled, give subsurface locations and measured and true vertical depths for all markers and zones pertinent to this work.)\*

As required by 43 CFR 3162.7-2 and Onshore Oil and Gas Order No. 4, Marathon Oil Company is requesting approval of off-lease storage and sales and surface commingling of liquid hydrocarbon production.

Surface commingling, off-lease measurement & storage, and use of a LACT unit were originally approved for the MOC Central tank battery 10/5/94.

A form along with maps and schematics are attached showing the leases and wells addressed by this request, and the equipment which will be utilized. Also, a copy of the NMOC's PLC-124 is attached for your convenience.

14. I hereby certify that the foregoing is true and correct

Signed

*Denny Lark*

Title Engineer Technician

Date 6/22/98

(This space for Federal or State office use)

Approved by

Title

Date

Conditions of approval, if any:

**APPLICATION FOR SURFACE COMMINGLING**  
**OFF LEASE MEASUREMENT, STORAGE AND ALTERNATIVE MEASUREMENT APPROVAL**

**To: Bureau of Land Management**  
**P.O. Box 1778**  
**Carlsbad, New Mexico 88220-1778**

Marathon Oil Company is requesting approval for Surface Commingling and Off Lease Storage of hydrocarbon production from the following formation and well(s) on State and Federal Lease(s) listed below:

**INDIAN HILLS STATE COM LEASE: E-10083 SECTION 36, T20S, R24E**  
**SOUTH DAGGER DRAW UPPER PENN POOL**

<b>Well</b>		<b>LEASE</b>		<b>API</b>		<b>API NO.</b>
<b>No.</b>	<b>UL</b>	<b>NUMBER</b>	<b>BOPD</b>	<b>Grav</b>	<b>MCFD</b>	<b>30-015</b>
			<b>S.I.</b>	<b>60°F</b>		
1	G	E-10083	S.I.			
3	D	E-10083	26	46.5	327	27168
4	E	E-10083	25	46.5	317	27235
5	L	E-10083	31	42.3	603	27433
6	K	E-10083	48	42.8	480	27456
8	M	E-10083	34	42.2	708	27486

Marathon would like to commingle this production with the commingled production at the MOC Central Tank Battery located in Unit Letter D of Section 1, T-21-S, R-23-E. The following leases currently produce into this central facility:

<b>Lease</b>		<b>API</b>	
<b>Name</b>	<b>BOPD</b>	<b>Grav.</b>	<b>MCFD</b>
<b>MOC Federal</b>	297	42	12,916
<b>North Indian Basin Unit</b>	1,496	43	22,130
<b>Bone Flats Federal</b>	732	42.3	1,926
<b>Comanche Federal "3"</b>	17	47	8,876
<b>Stinking Draw</b>	157	42.2	2,498

Lease numbers and locations of these leases are as follows:

**North Indian Basin Unit** (Including Com #NM-SW 242)

Lease Numbers: NM-0487-B, NM-05608, NM-05551, NM-05551-B, NM-SW242, and State  
Leases E-7906 and E-10170

Description: Section 2, S/2 Section 3, Section 10 and Section 11, T-21-S, R-23-E

**Comanche Federal Lease** (Including Com # NM-SW 242)

Lease Numbers: NM-04827-B, NM-34623, and NM-0384623

Description: N/2 of Section 3, T-21-S, R-23-E

**Bone Flats Federal "12" Lease**

Lease Numbers: NM-05608, NM-81677, and NM-05551-A  
Description: Section 2, T-21-S, R-23-E

**MOC Federal Lease**

Lease Numbers: NM-04827-B  
Description: Section 1, T-21-S, R-23-E

**Stinking Draw Lease**

Lease Numbers: State Leases K-1877 and E-10169-1  
Description: Section 36 T-20½-S, R-23-E

The proposed operation is shown in detail on the attached diagrams. A map is enclosed showing the lease numbers and location of all leases and wells that will contribute production to the commingling/common storage facility. All unitized/communitized areas and producing zones/pools are also clearly illustrated. Schematic diagrams are also attached which clearly identify all equipment that will be utilized.

The production from the Indian Hills State Com Lease is measured at each well site using a 3-phase separator. After separation, it is proposed to transport the oil production, via pipeline, to the Storage and Measurement facility (MOC Central tank battery). The oil will be further processed through the heater treater prior to storage at the tank battery. The gas is compressed and transported to the MOC Central tank battery. The water production will be sent directly to the Indian Hills State Com #7 SWD well for disposal.

The Storage and Measurement facility is located at UNIT Letter "D", Section 1, T-21-S, R-23-E, Eddy County, New Mexico. A satellite separation and measurement facility is located at UL "O", Sec. 2, T21S, R23E. The BLM will be notified of any change in facility location. Gas is measured using allocation meters. It is then transported to the Indian Basin Gas Plant (SW/NE, Section 23, T21S, R23E) by pipeline. After processing, the gas and NGLs are metered at the tail-gate of the plant and sold. Liquid hydrocarbon production and water will be measured using turbine meters per prior approvals. These meters are proved on a regular schedule. Oil is then sold through a LACT unit. All production will be allocated to wells based on monthly well tests and the previously approved methods of lease allocation. The working interest owners have been notified of this commingling proposal.

The proposed commingling of production is in the interest of conservation and will not result in reduced royalty or improper measurement of production. The proposed commingling is necessary for continued operation of the above referenced State Lease.

We understand that the requested approval will not constitute the granting of any right-of-way or construction rights not granted by lease instrument and, we will submit within 30 days an application for right-of-way to the BLM's Realty Section in your office if we have not already done so.

Additional wells require additional commingling approvals.

Signature



Name: A. B. Schoffmann

Title: Indian Basin Asset Team Manager

Date: June 22, 1998



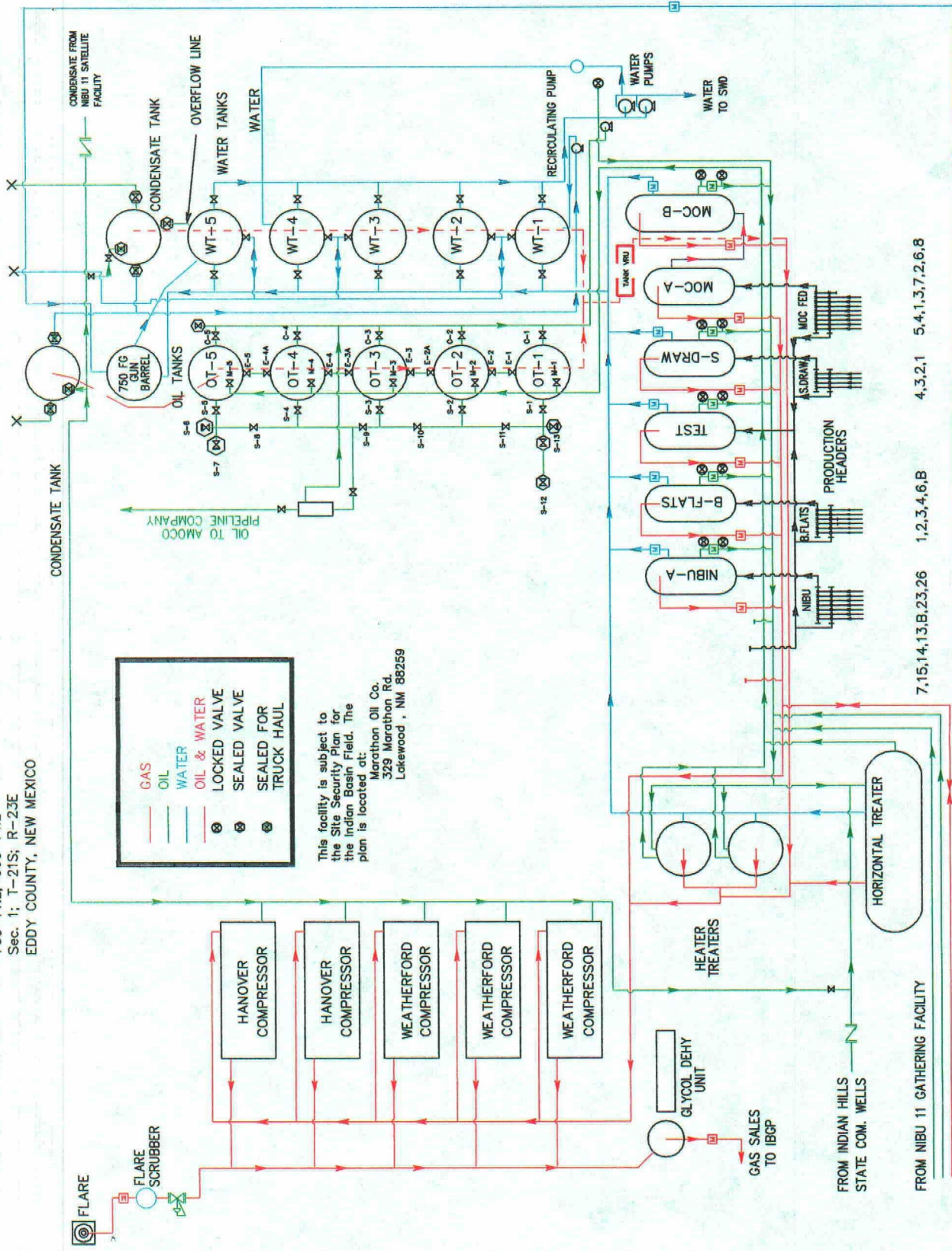
1000

# MOC CENTRAL PRODUCTION FACILITY

760' FNL; 660' FWL  
Sec. 1; T-21S; R-23E  
EDDY COUNTY, NEW MEXICO

TRUCK HAUL SALES

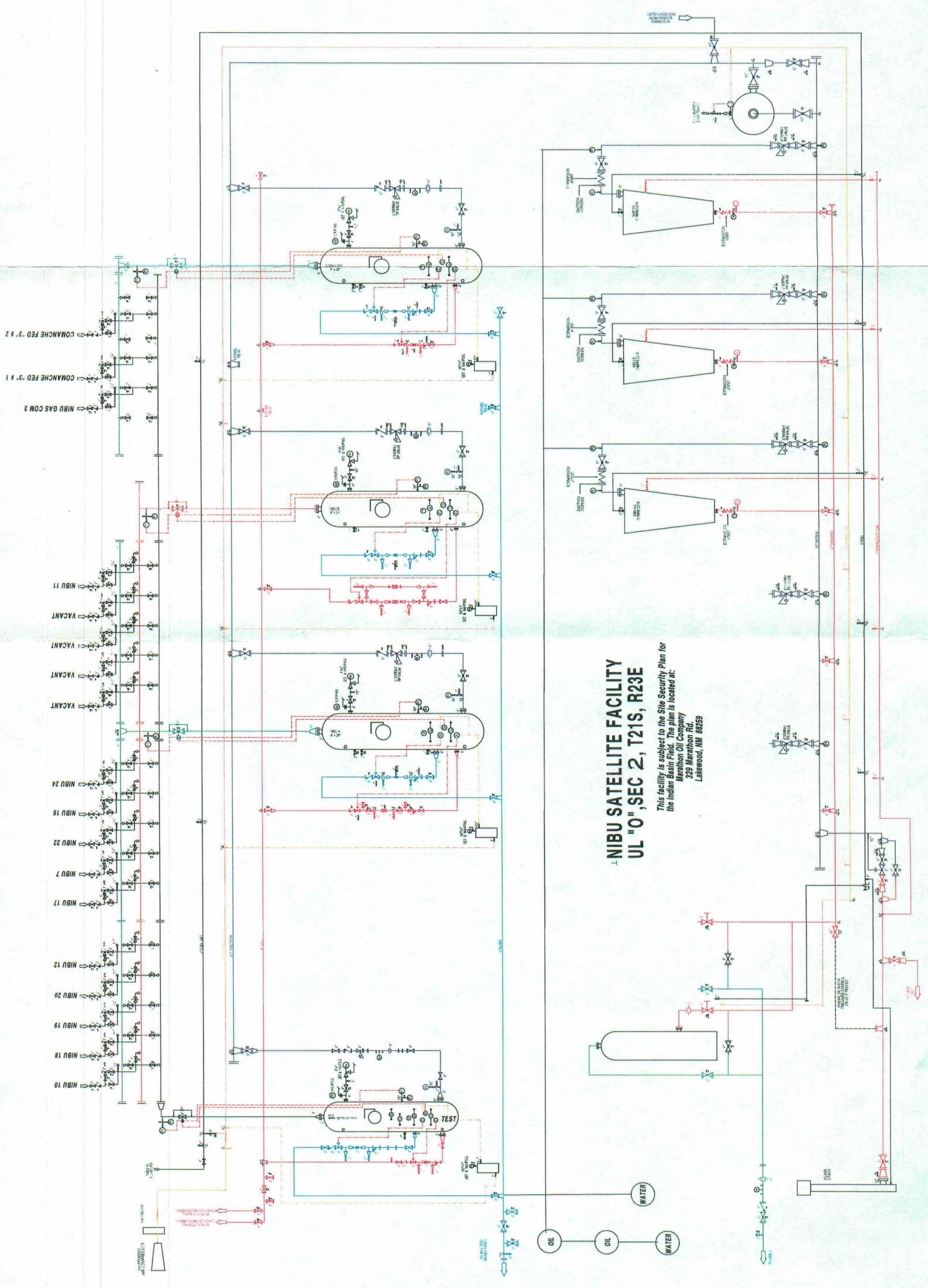
TRUCK HAUL SALES



This facility is subject to the Site Security Plan for the Indian Basin Field. The plan is located at:  
Marathon Oil Co.  
329 Marathon Rd.  
Lakewood, NM 88259

7,15,14,13,B,23,26 1,2,3,4,6,B 4,3,2,1 5,4,1,3,7,2,6,8





**NIBU SATELLITE FACILITY**  
**UL "O", SEC 2, T21S, R23E**

This facility is subject to the Site Security Plan for  
the Indian Basin Field. The plan is located at:  
Marathon Oil Company  
329 Marathon Rd.  
Lakewood, NM 88259

WARNING: NO OPEN  
FLAMES OR SMOKING  
ALLOWED IN THIS AREA







<div>3062 8126 2.92</div> <div>29</div> <div>Tesoro Huber-Fed 72 3452 0410 22-3</div> <div>U.S.</div>	<div>28</div> <div>Yates Pet. etal HBP 041915</div> <div>U.S.</div>	<div>27</div> <div>Yates Pet. etal HBP 045175</div> <div>U.S.</div>	<div>26</div> <div>"Saguaro-Fed." Yates Pet. etal HBP 045275</div> <div>U.S.</div>	<div>25</div> <div>Yates Pet. etal HBP 045275</div> <div>U.S.</div>	<div>30</div> <div>Read E. Stevens 669</div> <div>U.S.</div>
<div>Yates Pet. etal HBP 76939 1600</div> <div>Pago 7.1.96 66263</div> <div>State</div>	<div>Yates Pet. etal HBP 2.1.95 112 50</div> <div>Atlantic (Bell Pet.) State TD 3253 DA 5-9-64</div> <div>State</div>	<div>Yates Pet. etal HBP 045276</div> <div>U.S.</div>	<div>Conoco HBP 045276</div> <div>U.S.</div>	<div>Conoco HBP 045276</div> <div>U.S.</div>	<div>Ellwood Oil HBP 4375</div> <div>U.S.</div>
<div>Yates Pet. etal HBP 51.92 51060</div> <div>State</div>	<div>Yates Pet. etal HBP 0384625</div> <div>U.S.</div>	<div>Yates Pet. etal HBP 045276</div> <div>U.S.</div>	<div>Yates Pet. etal HBP 045276</div> <div>U.S.</div>	<div>Yates Pet. etal HBP 045276</div> <div>U.S.</div>	<div>Yates Pet. etal HBP 045276</div> <div>U.S.</div>
<div>Yates Pet. etal HBP 045276</div> <div>U.S.</div>	<div>Yates Pet. etal HBP 045276</div> <div>U.S.</div>	<div>Yates Pet. etal HBP 045276</div> <div>U.S.</div>	<div>Yates Pet. etal HBP 045276</div> <div>U.S.</div>	<div>Yates Pet. etal HBP 045276</div> <div>U.S.</div>	<div>Yates Pet. etal HBP 045276</div> <div>U.S.</div>
<div>Yates Pet. etal HBP 045276</div> <div>U.S.</div>	<div>Yates Pet. etal HBP 045276</div> <div>U.S.</div>	<div>Yates Pet. etal HBP 045276</div> <div>U.S.</div>	<div>Yates Pet. etal HBP 045276</div> <div>U.S.</div>	<div>Yates Pet. etal HBP 045276</div> <div>U.S.</div>	<div>Yates Pet. etal HBP 045276</div> <div>U.S.</div>
<div>Yates Pet. etal HBP 045276</div> <div>U.S.</div>	<div>Yates Pet. etal HBP 045276</div> <div>U.S.</div>	<div>Yates Pet. etal HBP 045276</div> <div>U.S.</div>	<div>Yates Pet. etal HBP 045276</div> <div>U.S.</div>	<div>Yates Pet. etal HBP 045276</div> <div>U.S.</div>	<div>Yates Pet. etal HBP 045276</div> <div>U.S.</div>
<div>Yates Pet. etal HBP 045276</div> <div>U.S.</div>	<div>Yates Pet. etal HBP 045276</div> <div>U.S.</div>	<div>Yates Pet. etal HBP 045276</div> <div>U.S.</div>	<div>Yates Pet. etal HBP 045276</div> <div>U.S.</div>	<div>Yates Pet. etal HBP 045276</div> <div>U.S.</div>	<div>Yates Pet. etal HBP 045276</div> <div>U.S.</div>
<div>Yates Pet. etal HBP 045276</div> <div>U.S.</div>	<div>Yates Pet. etal HBP 045276</div> <div>U.S.</div>	<div>Yates Pet. etal HBP 045276</div> <div>U.S.</div>	<div>Yates Pet. etal HBP 045276</div> <div>U.S.</div>	<div>Yates Pet. etal HBP 045276</div> <div>U.S.</div>	<div>Yates Pet. etal HBP 045276</div> <div>U.S.</div>
<div>Yates Pet. etal HBP 045276</div> <div>U.S.</div>	<div>Yates Pet. etal HBP 045276</div> <div>U.S.</div>	<div>Yates Pet. etal HBP 045276</div> <div>U.S.</div>	<div>Yates Pet. etal HBP 045276</div> <div>U.S.</div>	<div>Yates Pet. etal HBP 045276</div> <div>U.S.</div>	<div>Yates Pet. etal HBP 045276</div> <div>U.S.</div>
<div>Yates Pet. etal HBP 045276</div> <div>U.S.</div>	<div>Yates Pet. etal HBP 045276</div> <div>U.S.</div>	<div>Yates Pet. etal HBP 045276</div> <div>U.S.</div>	<div>Yates Pet. etal HBP 045276</div> <div>U.S.</div>	<div>Yates Pet. etal HBP 045276</div> <div>U.S.</div>	<div>Yates Pet. etal HBP 045276</div> <div>U.S.</div>
<div>Yates Pet. etal HBP 045276</div> <div>U.S.</div>	<div>Yates Pet. etal HBP 045276</div> <div>U.S.</div>	<div>Yates Pet. etal HBP 045276</div> <div>U.S.</div>	<div>Yates Pet. etal HBP 045276</div> <div>U.S.</div>	<div>Yates Pet. etal HBP 045276</div> <div>U.S.</div>	<div>Yates Pet. etal HBP 045276</div> <div>U.S.</div>
<div>Yates Pet. etal HBP 045276</div> <div>U.S.</div>	<div>Yates Pet. etal HBP 045276</div> <div>U.S.</div>	<div>Yates Pet. etal HBP 045276</div> <div>U.S.</div>	<div>Yates Pet. etal HBP 045276</div> <div>U.S.</div>	<div>Yates Pet. etal HBP 045276</div> <div>U.S.</div>	<div>Yates Pet. etal HBP 045276</div> <div>U.S.</div>
<div>Yates Pet. etal HBP 045276</div> <div>U.S.</div>	<div>Yates Pet. etal HBP 045276</div> <div>U.S.</div>	<div>Yates Pet. etal HBP 045276</div> <div>U.S.</div>	<div>Yates Pet. etal HBP 045276</div> <div>U.S.</div>	<div>Yates Pet. etal HBP 045276</div> <div>U.S.</div>	<div>Yates Pet. etal HBP 045276</div> <div>U.S.</div>
<div>Yates Pet. etal HBP 045276</div> <div>U.S.</div>	<div>Yates Pet. etal HBP 045276</div> <div>U.S.</div>	<div>Yates Pet. etal HBP 045276</div> <div>U.S.</div>	<div>Yates Pet. etal HBP 045276</div> <div>U.S.</div>	<div>Yates Pet. etal HBP 045276</div> <div>U.S.</div>	<div>Yates Pet. etal HBP 045276</div> <div>U.S.</div>
<div>Yates Pet. etal HBP 045276</div> <div>U.S.</div>	<div>Yates Pet. etal HBP 045276</div> <div>U.S.</div>	<div>Yates Pet. etal HBP 045276</div> <div>U.S.</div>	<div>Yates Pet. etal HBP 045276</div> <div>U.S.</div>	<div>Yates Pet. etal HBP 045276</div> <div>U.S.</div>	<div>Yates Pet. etal HBP 045276</div> <div>U.S.</div>
<div>Yates Pet. etal HBP 045276</div> <div>U.S.</div>	<div>Yates Pet. etal HBP 045276</div> <div>U.S.</div>	<div>Yates Pet. etal HBP 045276</div> <div>U.S.</div>	<div>Yates Pet. etal HBP 045276</div> <div>U.S.</div>	<div>Yates Pet. etal HBP 045276</div> <div>U.S.</div>	<div>Yates Pet. etal HBP 045276</div> <div>U.S.</div>
<div>Yates Pet. etal HBP 045276</div> <div>U.S.</div>	<div>Yates Pet. etal HBP 045276</div> <div>U.S.</div>	<div>Yates Pet. etal HBP 045276</div> <div>U.S.</div>	<div>Yates Pet. etal HBP 045276</div> <div>U.S.</div>	<div>Yates Pet. etal HBP 045276</div> <div>U.S.</div>	<div>Yates Pet. etal HBP 045276</div> <div>U.S.</div>
<div>Yates Pet. etal HBP 045276</div> <div>U.S.</div>	<div>Yates Pet. etal HBP 045276</div> <div>U.S.</div>	<div>Yates Pet. etal HBP 045276</div> <div>U.S.</div>	<div>Yates Pet. etal HBP 045276</div> <div>U.S.</div>	<div>Yates Pet. etal HBP 045276</div> <div>U.S.</div>	<div>Yates Pet. etal HBP 045276</div> <div>U.S.</div>
<div>Yates Pet. etal HBP 045276</div> <div>U.S.</div>	<div>Yates Pet. etal HBP 045276</div> <div>U.S.</div>	<div>Yates Pet. etal HBP 045276</div> <div>U.S.</div>	<div>Yates Pet. etal HBP 045276</div> <div>U.S.</div>	<div>Yates Pet. etal HBP 045276</div> <div>U.S.</div>	<div>Yates Pet. etal HBP 045276</div> <div>U.S.</div>
<div>Yates Pet. etal HBP 045276</div> <div>U.S.</div>	<div>Yates Pet. etal HBP 045276</div> <div>U.S.</div>	<div>Yates Pet. etal HBP 045276</div> <div>U.S.</div>	<div>Yates Pet. etal HBP 045276</div> <div>U.S.</div>	<div>Yates Pet. etal HBP 045276</div> <div>U.S.</div>	<div>Yates Pet. etal HBP 045276</div> <div>U.S.</div>
<div>Yates Pet. etal HBP 045276</div> <div>U.S.</div>	<div>Yates Pet. etal HBP 045276</div> <div>U.S.</div>	<div>Yates Pet. etal HBP 045276</div> <div>U.S.</div>	<div>Yates Pet. etal HBP 045276</div> <div>U.S.</div>	<div>Yates Pet. etal HBP 045276</div> <div>U.S.</div>	<div>Yates Pet. etal HBP 045276</div> <div>U.S.</div>
<div>Yates Pet. etal HBP 045276</div> <div>U.S.</div>	<div>Yates Pet. etal HBP 045276</div> <div>U.S.</div>	<div>Yates Pet. etal HBP 045276</div> <div>U.S.</div>	<div>Yates Pet. etal HBP 045276</div> <div>U.S.</div>	<div>Yates Pet. etal HBP 045276</div> <div>U.S.</div>	<div>Yates Pet. etal HBP 045276</div> <div>U.S.</div>
<div>Yates Pet. etal HBP 045276</div> <div>U.S.</div>	<div>Yates Pet. etal HBP 045276</div> <div>U.S.</div>	<div>Yates Pet. etal HBP 045276</div> <div>U.S.</div>	<div>Yates Pet. etal HBP 045276</div> <div>U.S.</div>	<div>Yates Pet. etal HBP 045276</div> <div>U.S.</div>	<div>Yates Pet. etal HBP 045276</div> <div>U.S.</div>
<div>Yates Pet. etal HBP 045276</div> <div>U.S.</div>	<div>Yates Pet. etal HBP 045276</div> <div>U.S.</div>	<div>Yates Pet. etal HBP 045276</div> <div>U.S.</div>	<div>Yates Pet. etal HBP 045276</div> <div>U.S.</div>	<div>Yates Pet. etal HBP 045276</div> <div>U.S.</div>	<div>Yates Pet. etal HBP 045276</div> <div>U.S.</div>
<div>Yates Pet. etal HBP 045276</div> <div>U.S.</div>	<div>Yates Pet. etal HBP 045276</div> <div>U.S.</div>	<div>Yates Pet. etal HBP 045276</div> <div>U.S.</div>	<div>Yates Pet. etal HBP 045276</div> <div>U.S.</div>	<div>Yates Pet. etal HBP 045276</div> <div>U.S.</div>	<div>Yates Pet. etal HBP 045276</div> <div>U.S.</div>
<div>Yates Pet. etal HBP 045276</div> <div>U.S.</div>	<div>Yates Pet. etal HBP 045276</div> <div>U.S.</div>	<div>Yates Pet. etal HBP 045276</div> <div>U.S.</div>	<div>Yates Pet. etal HBP 045276</div> <div>U.S.</div>	<div>Yates Pet. etal HBP 045276</div> <div>U.S.</div>	<div>Yates Pet. etal HBP 045276</div> <div>U.S.</div>
<div>Yates Pet. etal HBP 045276</div> <div>U.S.</div>	<div>Yates Pet. etal HBP 045276</div> <div>U.S.</div>	<div>Yates Pet. etal HBP 045276</div> <div>U.S.</div>	<div>Yates Pet. etal HBP 045276</div> <div>U.S.</div>	<div>Yates Pet. etal HBP 045276</div> <div>U.S.</div>	<div>Yates Pet. etal HBP 045276</div> <div>U.S.</div>
<div>Yates Pet. etal HBP 045276</div> <div>U.S.</div>	<div>Yates Pet. etal HBP 045276</div> <div>U.S.</div>	<div>Yates Pet. etal HBP 045276</div> <div>U.S.</div>	<div>Yates Pet. etal HBP 045276</div> <div>U.S.</div>	<div>Yates Pet. etal HBP 045276</div> <div>U.S.</div>	<div>Yates Pet. etal HBP 045276</div> <div>U.S.</div>
<div>Yates Pet. etal HBP 045276</div> <div>U.S.</div>	<div>Yates Pet. etal HBP 045276</div> <div>U.S.</div>	<div>Yates Pet. etal HBP 045276</div> <div>U.S.</div>	<div>Yates Pet. etal HBP 045276</div> <div>U.S.</div>	<div>Yates Pet. etal HBP 045276</div> <div>U.S.</div>	<div>Yates Pet. etal HBP 045276</div> <div>U.S.</div>
<div>Yates Pet. etal HBP 045276</div> <div>U.S.</div>	<div>Yates Pet. etal HBP 045276</div> <div>U.S.</div>	<div>Yates Pet. etal HBP 045276</div> <div>U.S.</div>	<div>Yates Pet. etal HBP 045276</div> <div>U.S.</div>	<div>Yates Pet. etal HBP 045276</div> <div>U.S.</div>	<div>Yates Pet. etal HBP 045276</div> <div>U.S.</div>
<div>Yates Pet. etal HBP 045276</div> <div>U.S.</div>	<div>Yates Pet. etal HBP 045276</div> <div>U.S.</div>	<div>Yates Pet. etal HBP 045276</div> <div>U.S.</div>	<div>Yates Pet. etal HBP 045276</div> <div>U.S.</div>	<div>Yates Pet. etal HBP 045276</div> <div>U.S.</div>	<div>Yates Pet. etal HBP 045276</div> <div>U.S.</div>
<div>Yates Pet. etal HBP 045276</div> <div>U.S.</div>	<div>Yates Pet. etal HBP 045276</div> <div>U.S.</div>	<div>Yates Pet. etal HBP 045276</div> <div>U.S.</div>	<div>Yates Pet. etal HBP 045276</div> <div>U.S.</div>	<div>Yates Pet. etal HBP 045276</div> <div>U.S.</div>	<div>Yates Pet. etal HBP 045276</div> <div>U.S.</div>
<div>Yates Pet. etal HBP 045276</div> <div>U.S.</div>	<div>Yates Pet. etal HBP 045276</div> <div>U.S.</div>	<div>Yates Pet. etal HBP 045276</div> <div>U.S.</div>	<div>Yates Pet. etal HBP 045276</div> <div>U.S.</div>	<div>Yates Pet. etal HBP 045276</div> <div>U.S.</div>	<div>Yates Pet. etal HBP 045276</div> <div>U.S.</div>
<div>Yates Pet. etal HBP 045276</div> <div>U.S.</div>	<div>Yates Pet. etal HBP 045276</div> <div>U.S.</div>	<div>Yates Pet. etal HBP 045276</div> <div>U.S.</div>	<div>Yates Pet. etal HBP 045276</div> <div>U.S.</div>	<div>Yates Pet. etal HBP 045276</div> <div>U.S.</div>	<div>Yates Pet. etal HBP 045276</div> <div>U.S.</div>
<div>Yates Pet. etal HBP 045276</div> <div>U.S.</div>	<div>Yates Pet. etal HBP 045276</div> <div>U.S.</div>	<div>Yates Pet. etal HBP 045276</div> <div>U.S.</div>	<div>Yates Pet. etal HBP 045276</div> <div>U.S.</div>	<div>Yates Pet. etal HBP 045276</div> <div>U.S.</div>	<div>Yates Pet. etal HBP 045276</div> <div>U.S.</div>
<div>Yates Pet. etal HBP 045276</div> <div>U.S.</div>	<div>Yates Pet. etal HBP 045276</div> <div>U.S.</div>	<div>Yates Pet. etal HBP 045276</div> <div>U.S.</div>	<div>Yates Pet. etal HBP 045276</div> <div>U.S.</div>	<div>Yates Pet. etal HBP 045276</div> <div>U.S.</div>	<div>Yates Pet. etal HBP 045276</div> <div>U.S.</div>
<div>Yates Pet. etal HBP 045276</div> <div>U.S.</div>	<div>Yates Pet. etal HBP 045276</div> <div>U.S.</div>	<div>Yates Pet. etal HBP 045276</div> <div>U.S.</div>	<div>Yates Pet. etal HBP 045276</div> <div>U.S.</div>	<div>Yates Pet. etal HBP 045276</div> <div>U.S.</div>	<div>Yates Pet. etal HBP 045276</div> <div>U.S.</div>
<div>Yates Pet. etal HBP 045276</div> <div>U.S.</div>	<div>Yates Pet. etal HBP 045276</div> <div>U.S.</div>	<div>Yates Pet. etal HBP 045276</div> <div>U.S.</div>	<div>Yates Pet. etal HBP 045276</div> <div>U.S.</div>	<div>Yates Pet. etal HBP 045276</div> <div>U.S.</div>	<div>Yates Pet. etal HBP 045276</div> <div>U.S.</div>
<div>Yates Pet. etal HBP 045276</div> <div>U.S.</div>	<div>Yates Pet. etal HBP 045276</div> <div>U.S.</div>	<div>Yates Pet. etal HBP 045276</div> <div>U.S.</div>	<div>Yates Pet. etal HBP 045276</div> <div>U.S.</div>	<div>Yates Pet. etal HBP 045276</div> <div>U.S.</div>	<div>Yates Pet. etal HBP 045276</div> <div>U.S.</div>
<div>Yates Pet. etal HBP 045276</div> <div>U.S.</div>	<div>Yates Pet. etal HBP 045276</div> <div>U.S.</div>	<div>Yates Pet. etal HBP 045276</div> <div>U.S.</div>	<div>Yates Pet. etal HBP 045276</div> <div>U.S.</div>	<div>Yates Pet. etal HBP 045276</div> <div>U.S.</div>	<div>Yates Pet. etal HBP 045276</div> <div>U.S.</div>
<div>Yates Pet. etal HBP 045276</div> <div>U.S.</div>	<div>Yates Pet. etal HBP 045276</div> <div>U.S.</div>	<div>Yates Pet. etal HBP 045276</div> <div>U.S.</div>	<div>Yates Pet. etal HBP 045276</div> <div>U.S.</div>	<div>Yates Pet. etal HBP 045276</div> <div>U.S.</div>	<div>Yates Pet. etal HBP 045276</div> <div>U.S.</div>
<div>Yates Pet. etal HBP 045276</div> <div>U.S.</div>	<div>Yates Pet. etal HBP 045276</div> <div>U.S.</div>	<div>Yates Pet. etal HBP 045276</div> <div>U.S.</div>	<div>Yates Pet. etal HBP 045276</div> <div>U.S.</div>	<div>Yates Pet. etal HBP 045276</div> <div>U.S.</div>	<div>Yates Pet. etal HBP 045276</div> <div>U.S.</div>
<div>Yates Pet. etal HBP 045276</div> <div>U.S.</div>	<div>Yates Pet. etal HBP 045276</div> <div>U.S.</div>	<div>Yates Pet. etal HBP 045276</div> <div>U.S.</div>	<div>Yates Pet. etal HBP 045276</div> <div>U.S.</div>	<div>Yates Pet. etal HBP 045276</div> <div>U.S.</div>	<div>Yates Pet. etal HBP 045276</div> <div>U.S.</div>
<div>Yates Pet. etal HBP 045276</div> <div>U.S.</div>	<div>Yates Pet. etal HBP 045276</div> <div>U.S.</div>	<div>Yates Pet. etal HBP 045276</div> <div>U.S.</div>	<div>Yates Pet. etal HBP 045276</div> <div>U.S.</div>	<div>Yates Pet. etal HBP 045276</div> <div>U.S.</div>	<div>Yates Pet. etal HBP 045276</div> <div>U.S.</div>
<div>Yates Pet. etal HBP 045276</div> <div>U.S.</div>	<div>Yates Pet. etal HBP 045276</div> <div>U.S.</div>	<div>Yates Pet. etal HBP 045276</div> <div>U.S.</div>	<div>Yates Pet. etal HBP 045276</div> <div>U.S.</div>	<div>Yates Pet. etal HBP 045276</div> <div>U.S.</div>	<div>Yates Pet. etal HBP 045276</div> <div>U.S.</div>
<div>Yates Pet. etal HBP 045276</div> <div>U.S.</div>	<div>Yates Pet. etal HBP 045276</div> <div>U.S.</div>	<div>Yates Pet. etal HBP 045276</div> <div>U.S.</div>	<div>Yates Pet. etal HBP 045276</div> <div>U.S.</div>	<div>Yates Pet. etal HBP 045276</div> <div>U.S.</div>	<div>Yates Pet. etal HBP 045276</div> <div>U.S.</div>
<div>Yates Pet. etal HBP 045276</div> <div>U.S.</div>	<div>Yates Pet. etal HBP 045276</div> <div>U.S.</div>	<div>Yates Pet. etal HBP 045276</div> <div>U.S.</div>	<div>Yates Pet. etal HBP 045276</div> <div>U.S.</div>	<div>Yates Pet. etal HBP 045276</div> <div>U.S.</div>	<div>Yates Pet. etal HBP 045276</div> <div>U.S.</div>
<div>Yates Pet. etal HBP 045276</div> <div>U.S.</div>	<div>Yates Pet. etal HBP 045276</div> <div>U.S.</div>	<div>Yates Pet. etal HBP 045276</div> <div>U.S.</div>	<div>Yates Pet. etal HBP 045276</div> <div>U.S.</div>	<div>Yates Pet. etal HBP 045276</div> <div>U.S.</div>	<div>Yates Pet. etal HBP 045276</div> <div>U.S.</div>
<div>Yates Pet. etal HBP 045276</div> <div>U.S.</div>	<div>Yates Pet. etal HBP 045276</div> <div>U.S.</div>	<div>Yates Pet. etal HBP 045276</div> <div>U.S.</div>	<div>Yates Pet. etal HBP 045276</div> <div>U.S.</div>	<div>Yates Pet. etal HBP 045276</div> <div>U.S.</div>	<div>Yates Pet. etal HBP 045276</div> <div>U.S.</div>
<div>Yates Pet. etal HBP 045276</div> <div>U.S.</div>	<div>Yates Pet. etal HBP 045276</div> <div>U.S.</div>	<div>Yates Pet. etal HBP 045276</div> <div>U.S.</div>	<div>Yates Pet. etal HBP 045276</div> <div>U.S.</div>	<div>Yates Pet. etal HBP 045276</div> <div>U.S.</div>	<div>Yates Pet. etal HBP 045276</div> <div>U.S.</div>
<div>Yates Pet. etal HBP 045276</div> <div>U.S.</div>	<div>Yates Pet. etal HBP 045276</div> <div>U.S.</div>	<div>Yates Pet. etal HBP 045276</div> <div>U.S.</div>	<div>Yates Pet. etal HBP 045276</div> <div>U.S.</div>	<div>Yates Pet. etal HBP 045276</div> <div>U.S.</div>	<div>Yates Pet. etal HBP 045276</div> <div>U.S.</div>
<div>Yates Pet. etal HBP 045276</div> <div>U.S.</div>	<div>Yates Pet. etal HBP 045276</div> <div>U.S.</div>	<div>Yates Pet. etal HBP 045276</div> <div>U.S.</div>	<div>Yates Pet. etal HBP 045276</div> <div>U.S.</div>	<div>Yates Pet. etal HBP 045276</div> <div>U.S.</div>	<div>Yates Pet. etal HBP 045276</div> <div>U.S.</div>
<div>Yates Pet. etal HBP 045276</div> <div>U.S.</div>	<div>Yates Pet. etal HBP 045276</div> <div>U.S.</div>	<div>Yates Pet. etal HBP 045276</div> <div>U.S.</div>	<div>Yates Pet. etal HBP 045276</div> <div>U.S.</div>	<div>Yates Pet. etal HBP 045276</div> <div>U.S.</div>	<div>Yates Pet. etal HBP 045276</div> <div>U.S.</div>
<div>Yates Pet. etal HBP 045276</div> <div>U.S.</div>	<div>Yates Pet. etal HBP 045276</div> <div>U.S.</div>	<div>Yates Pet. etal HBP 045276</div> <div>U.S.</div>	<div>Yates Pet. etal HBP 045276</div> <div>U.S.</div>	<div>Yates Pet. etal HBP 045276</div> <div>U.S.</div>	<div>Yates Pet. etal HBP 045276</div> <div>U.S.</div>
<div>Yates Pet. etal HBP 045276</div> <div>U.S.</div>	<div>Yates Pet. etal HBP 045276</div> <div>U.S.</div>	<div>Yates Pet. etal HBP 045276</div> <div>U.S.</div>	<div>Yates Pet. etal HBP 045276</div> <div>U.S.</div>	<div>Yates Pet. etal HBP 045276</div> <div>U.S.</div>	<div>Yates Pet. etal HBP 045276</div> <div>U.S.</div>
<div>Yates Pet. etal HBP 045276</div> <div>U.S.</div>	<div>Yates Pet. etal HBP 045276</div> <div>U.S.</div>	<div>Yates Pet. etal HBP 045276</div> <div>U.S.</div>	<div>Yates Pet. etal HBP 045276</div> <div>U.S.</div>	<div>Yates Pet. etal HBP 045276</div> <div>U.S.</div>	<div>Yates Pet. etal HBP 045276</div> <div>U.S.</div>
<div>Yates Pet. etal HBP 045276</div> <div>U.S.</div>	<div>Yates Pet. etal HBP 045276</div> <div>U.S.</div>	<div>Yates Pet. etal HBP 045276</div> <div>U.S.</div>	<div>Yates Pet. etal HBP 045276</div> <div>U.S.</div>	<div>Yates Pet. etal HBP 045276</div> <div>U.S.</div>	<div>Yates Pet. etal HBP 045276</div> <div>U.S.</div>
<div>Yates Pet. etal HBP 045276</div> <div>U.S.</div>	<div>Yates Pet. etal HBP 045276</div> <div>U.S.</div>	<div>Yates Pet. etal HBP 045276</div> <div>U.S.</div>	<div>Yates Pet. etal HBP 045276</div> <div>U.S.</div>	<div>Yates Pet. etal HBP 045276</div> <div>U.S.</div>	<div>Yates Pet. etal HBP 045276</div> <div>U.S.</div>
<div>Yates Pet. etal HBP 045276</div> <div>U.S.</div>	<div>Yates Pet. etal HBP 045276</div> <div>U.S.</div>	<div>Yates Pet. etal HBP 045276</div> <div>U.S.</div>	<div>Yates Pet. etal HBP 045276</div> <div>U.S.</div>	<div>Yates Pet. etal HBP 045276</div> <div>U.S.</div>	<div>Yates Pet. etal HBP </div>