

Midland Division  
Exploration Production

Conoco Inc.  
10 Desta Drive, Suite 100W  
Midland, TX 79705-4500  
(915) 686-5400

December 17, 1997

RECEIVED  
DEC 22 1997

Mr. William J. LeMay  
State of New Mexico  
Oil Conservation Division  
2040 S. Pacheco  
Santa Fe, NM 87504

Re: Request for Surface Commingling of Production from  
the Warren McKee and Warren Devonian Pools from  
the Warren McKee No. 27 and Warren Unit Burger No. 7  
in the Warren McKee Battery located in Unit J, Sec. 29  
Township 20S, Range 38E, Lea County, New Mexico

Dear Mr. LeMay:

62990 / As provided by Rule 303.B. Conoco requests approval to surface commingle McKee and  
63270 Devonian production from the Warren McKee No. 27 and the Warren Unit Burger No. 7 wells in  
the Warren McKee Battery with allocation to be determined by periodic well testing. Currently  
this battery receives only McKee production from well No. 27. The current Warren McKee No.  
7 well is being recompleted to the Devonian and will be renamed as the Warren Unit Burger No.  
7 (as identified throughout this application).

Both wells and the referenced battery are all within the Conoco operated Warren Unit as shown  
in EXHIBIT A. Locations of the wells are included in EXHIBIT B. A battery diagram is also  
included as EXHIBIT C.

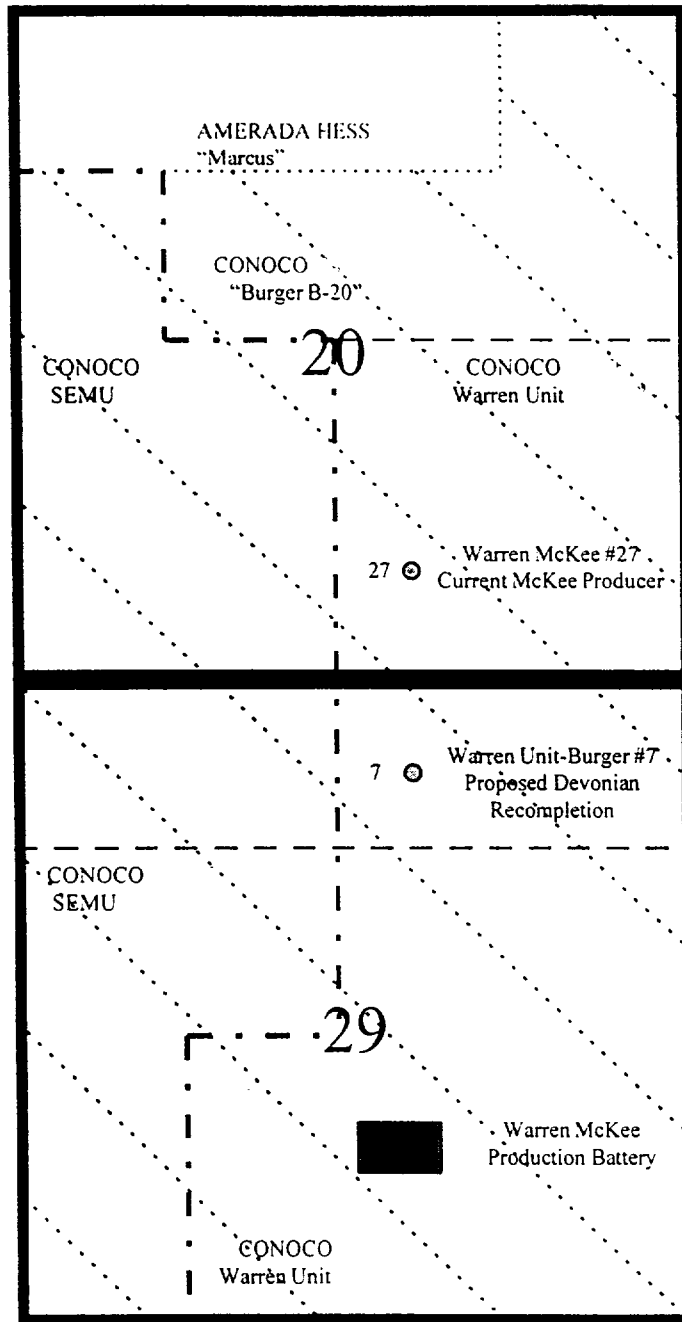
EXHIBIT D shows anticipated production rates, API gravities, and projected revenue. It is also  
shown that revenue from the commingled production stream will be equal to the total of the two  
separate streams. Commingling and storing production from both wells will reduce operating  
costs and equipment needs and will extend their economic life by improving their financial  
performance.

If there are further question concerning this application, please contact me at (915) 686-6548.

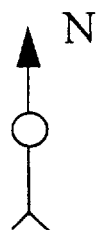
Very truly yours,

  
Jerry W. Hoover  
Sr. Conservation Coordinator

38E



20S



LOCATION PLAT

Proposed Warren Unit-Burger #7  
Devonian Recompletion

EXHIBIT A

**APPLICATION TO SURFACE COMMINGLE  
Warren Unit-McKee #27 and Warren Unit-Burger #7**

**Warren Unit McKee/Devonian Production**

<b><u>Well Name</u></b>	<b><u>Pool Name</u></b>	<b><u>Location</u></b>
Warren Unit-McKee #27	Warren McKee (RCZ)	Unit O, Sec.20, T20S, R38E
Warren Unit-Burger #7	Warren Devonian (GDP)	Unit B, Sec.29, T20S, R-38E

[illegible]

**APPLICATION TO SURFACE COMMINGLE**  
**Warren Unit-McKee #27 and Warren Unit-Burger #7**

**Warren Unit McKee/Devonian Production**

**PRODUCED INDIVIDUALLY**

<u>Well Name</u>	<u>Pool Name</u>	<u>BOPD</u>	<u>API (Corrected)</u>	<u>\$/BO</u>	<u>Revenue/Day</u>
Warren Unit-McKee #27	Warren McKee (RCZ)	111	45.0	17.90	\$1986.90
Warren Unit-Burger #7	Warren Devonian (GDP)	100	42.0	17.90	\$1790.00
					\$3776.90

**COMBINED PRODUCTION**

	<u>BOPD</u>	<u>API (Corrected)</u>	<u>\$/BO</u>	<u>Revenue/Day</u>
Warren Unit-McKee #27 and Warren Unit-Burger #7	211	40.0 (deemed)	17.90	\$3776.90

District I  
PO Box 1980, Hobbs, NM 88241-1980

State of New Mexico  
Energy, Minerals & Natural Resources Department

Revised February 21, 1994

District II  
PO Drawer DD, Artesia, NM 88211-0719

## OIL CONSERVATION DIVISION

Instructions on back

District III  
1000 Rio Brazos Rd. Aztec, NM 87410

PO Box 2088

State Lease - 4 Copies

Santa Fe, NM 87504-2088

Fee Lease - 3 Copies

District IV  
PO Box 2088, Santa Fe, NM 87504-2088

☒ AMENDED REPORT

## WELL LOCATION AND ACREAGE DEDICATION PLAT

API Number 30-025-24158	2 Pool Code 63270	3 Pool Name Warren McKee
4 Property Code	5 Property Name Warren McKee	6 Well Number #128
7 OGRID No. 005073	8 Operator Name Conoco Inc., 10 Desta Drive, Ste. 100W, Midland, TX 79705-4500	9 Elevation 3539'

## 10 Surface Location

UL or lot no	Section	Township	Range	Lot Idn	Feet from the	North/South line	Feet from the	East/West line	County
B	29	20S	38E		330	North	1650	East	Lea

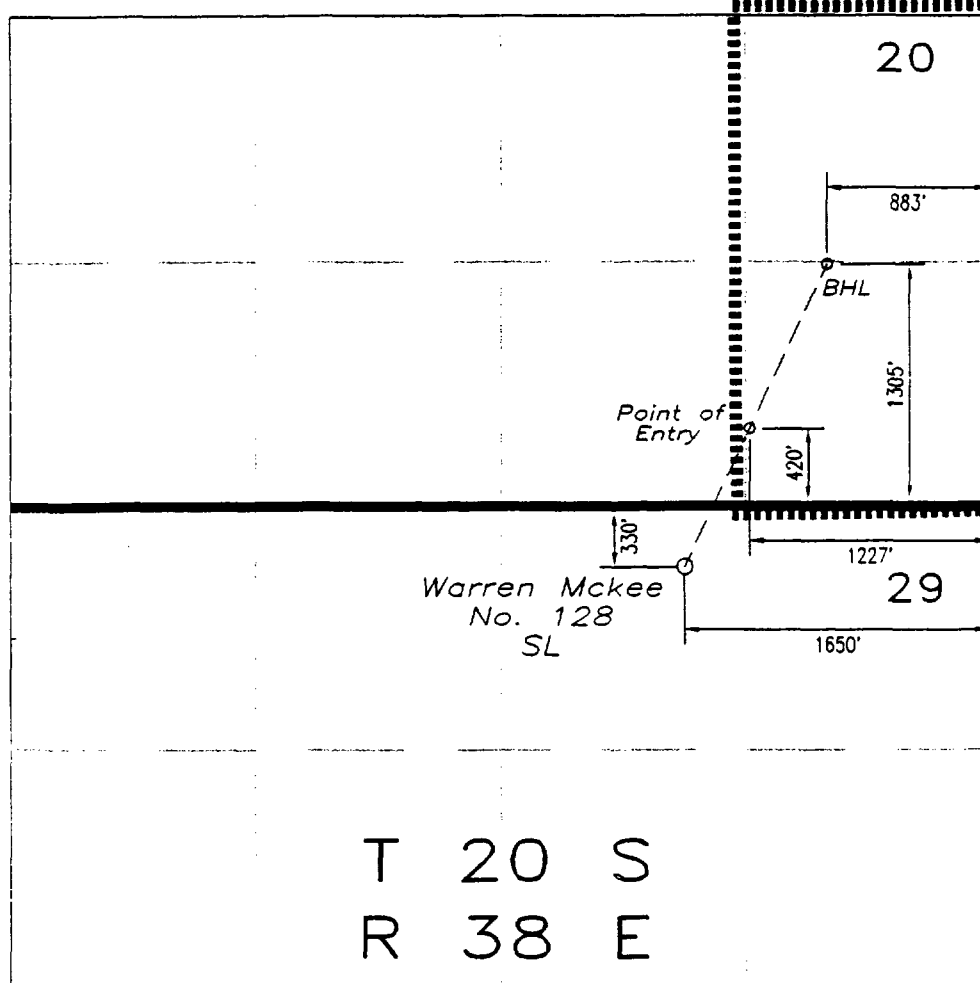
## 11 Bottom Hole Location If Different From Surface

UL or lot no.	Section	Township	Range	Lot Idn	Feet from the	North/South line	Feet from the	East/West line	County
D	20	20S	38E		1304 1305	South	883	East	Lea

12 Dedicated Acres 80	13 Joint or Infill	14 Consolidation Code	15 Order No.
--------------------------	--------------------	-----------------------	--------------

Point of Entry into Formation: 420 FSL &amp; 1227 FEL Section 20

NO ALLOWABLE WILL BE ASSIGNED TO THIS COMPLETION UNTIL ALL INTERESTS HAVE BEEN CONSOLIDATED  
OR A NON-STANDARD UNIT HAS BEEN APPROVED BY THE DIVISION



## 17 OPERATOR CERTIFICATION

I hereby certify that the information contained herein is true and complete to the best of my knowledge and belief

*Kay Maddox*  
Signature

Kay Maddox  
Printed Name

Regulatory Agent  
Title

July 7, 1998  
Date

July 7, 1998  
Date

## 18 SURVEYOR CERTIFICATION

I hereby certify that the well location shown on this plat was plotted from field notes of actual surveys made by me or under my supervision, and that the same is true and correct to the best of my belief.

Date of Survey

Signature and Seal of Professional Surveyor:

Certificate Number