

GRARIDGE CORPORATION
IBEX BUILDING POST OFFICE BOX 752
BRECKENRIDGE, TEXAS

April 1, 1960

WFX - 35.
no waiting period

Oil Conservation Commission
State of New Mexico
P. O. Box 871
Santa Fe, New Mexico

Re: Application For Administrative
Approval To Convert Two Wells
To Water Injection Wells in
Artesia Pilot Flood No. 1,
Eddy County, New Mexico

Gentlemen:

In accordance with Commission Order No. R-952-A,
Graridge Corporation respectively request administrative approval
to convert the following wells to water injection wells.

<u>LEASE</u>	<u>WELL NO.</u>	<u>LOCATION</u>
Solt State Welch	3	Unit "L", Sec.4, T18S, R28E
Solt State Welch	5	Unit "L", Sec.4, T18S, R28E

The following data pertinent to the proposed expansion
are given.

(1) The proposed injection wells are directly offset by
a producing well which has shown response to the waterflood project.
See attached Form C-116 and Exhibit No. 1.

(2) Exhibit No. 1 indicates present injection and pro-
ducing wells in Artesia Pilot Flood No. 1.

(3) Exhibit No. 2 indicates present injection well data.
It is evident that some of the injection wells are not as receptive
to water injection as others, thus, it is desirable to place wells
on injection as early as responses warrant in order to maintain a
balance.

(4) Exhibit No. 3 gives performance curves for the overall
waterflood project.

April 1, 1960

The subject wells will be completed in the following manner.

Solt State Welch Nos. 3 and 5 will be re-entered and cleaned out to approximately 2300 feet, below the Premier Sand. Eight and five-eighths inch surface casing will be set at 300 feet and cemented with 200 sacks of cement. Four and one-half inch casing will be set at 2300 feet and cemented with 150 sacks of cement. The Premier Sand formation will be perforated and water injected into it. Before placing these wells on injection, a string of two and three-eighths inch cement lined tubing will be run with a tension type packer in each well and set at a depth well below the top of the cement outside the four and one-half inch casing.

Any consideration by the Commission in expediting this matter will be greatly appreciated.

Yours very truly,

GRARIDGE CORPORATION



B. G. Harrison
Manager of Secondary Recovery

SHL:BGH:gl

Attachments

cc:

Oil Conservation Commission, Artesia

State Engineers Office

Graham Office

Mr. Cliff Chapman

Mr. Paul Darnell

NEW MEXICO OIL CONSERVATION COMMISSION

GAS-OIL RATIO REPORT

OPERATOR Graridge Corporation POOL Artesia Pilot Flood No. 1
ADDRESS P. O. Box 752, Breckenridge, Texas MONTH OF April, 19 60
SCHEDULED TEST _____ COMPLETION TEST _____ SPECIAL TEST X (Check One)
(See Instructions on Reverse Side)

Lease	Well No.	Date of Test	Producing Method	Choke Size	Test Hours	Daily Allowable Bbls.	Production During Test			GOR Cu. Ft. Per Bbl.
							Water Bbls.	Oil Bbls.	Gas MCF	
<u>BEFORE WATERFLOOD RESPONSE</u>										
Solt State Welch	1	1-59	Pump		24	3	0	2.7	TSTM	TSTM
<u>AFTER WATERFLOOD RESPONSE</u>										
Solt State Welch	1	2-60	Pump		24	10	8.3	5.5	TSTM	TSTM

No well will be assigned an allowable greater than the amount of oil produced on the official test.

During gas-oil ratio test, each well shall be produced at a rate not exceeding the top unit allowable for the pool in which well is located by more than 25 percent. Operator is encouraged to take advantage of this 25 percent tolerance in order that well can be assigned increased allowables when authorized by the Commission.

Gas volumes must be reported in MCF measured at a pressure base of 15.025 psia and a temperature of 60 degrees F. Specific gravity base will be 0.60.

Mail original and one copy of this report to the district office of the New Mexico Oil Conservation Commission. In accordance with Rule 301 and Appropriate Pool Rules.

(I certify that the information given is true and complete to the best of my knowledge.)

Date April 1, 1960

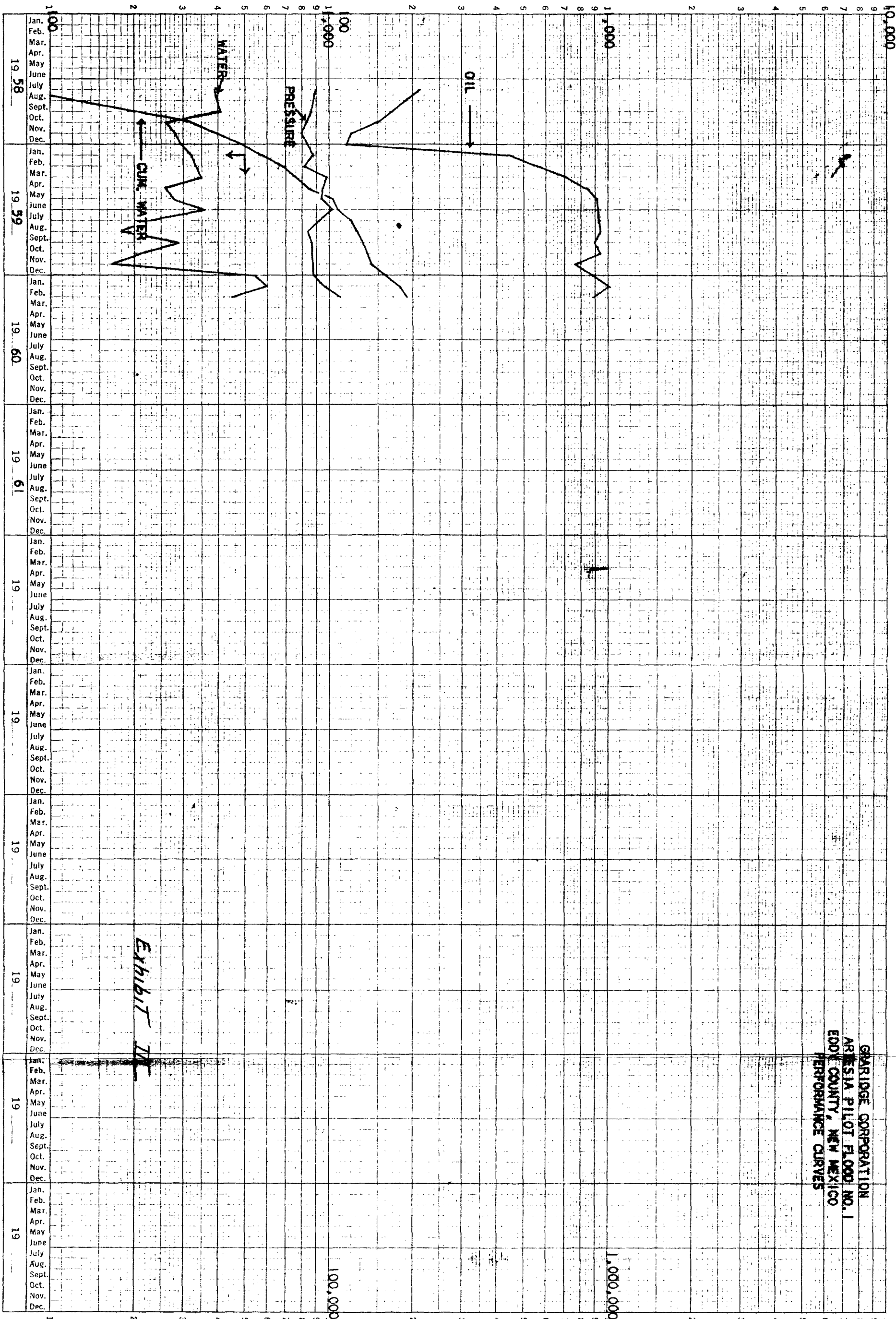
GRARIDGE CORPORATION

By S. H. Lindley, Jr. Company
S. H. Lindley, Jr.
Engineer
Title

WATER INJECTION, BBL/DAY

INJECTION PRESSURE, PSIG.

OIL PRODUCTION, BBL/DAY



CUMULATIVE WATER INJECTED, BBL.

MONTHLY WATER FLOOD REPORT

Injection Well Data

Month: February, 1960

EXHIBIT 11



STATE OF NEW MEXICO

STATE ENGINEER OFFICE
SANTA FE

S. E. REYNOLDS
STATE ENGINEER

ADDRESS CORRESPONDENCE TO:
P. O. BOX 1079
SANTA FE, N. M.

April 6, 1960

Mr. A. L. Porter, Jr.
Secretary-Director
Oil Conservation Commission
Santa Fe, New Mexico

Dear Mr. Porter:


Reference is made to the application of the Graridge Corporation for administrative approval to convert two wells to water injection wells in the Artesia Pilot Flood No. 1, Eddy County, New Mexico dated April 1, 1960. The specific wells involved in this matter are the Solt State Welch No. 3 and the Solt State Welch No. 5.

After reviewing the application with particular reference to the method of casing and cementing the hole and the method of injection, I have reached the conclusion that the granting of this application will not constitute a threat of contamination to the fresh waters which may exist in this area. Therefore, this office offers no objection to the granting of the application.

Yours truly,

S. E. Reynolds
State Engineer

FEI/ma
cc-Graridge Corporation
F. H. Hennighausen

By: 
Frank E. Irby
Chief
Water Rights Division

LARGE FORMAT
EXHIBIT HAS
BEEN REMOVED
AND IS LOCATED
IN THE NEXT FILE