

MAIN OFFICE ~~GR~~ BRIDGE CORPORATION

IBEX BUILDING

POST OFFICE BOX 752

1963 JAN 31 PM 1:23 BRECKENRIDGE, TEXAS

January 28, 1963

1770 - 130

1770 - 16 15

Oil Conservation Commission  
State of New Mexico  
State Capitol Building  
Santa Fe, New Mexico

Re: Application for Administrative  
Approval to Convert One Well to  
Water Injection Well in Artesia  
Flood No. 3, Eddy County, New  
Mexico

Gentlemen:

In accordance with Commission Order No. R-966-E, Granridge Corporation respectively requests administrative approval to convert the following well to a water injection well.

<u>LEASE</u>	<u>WELL NO.</u>	<u>LOCATION</u>
Resler Yates State	338	Unit 1, Section 29, T18S, R28E

The following data pertinent to the proposed expansion are given:

(1) The proposed injection well is directly offset by a producing well which has shown response to the waterflood project. See attached Form C-116 and Exhibit No. 1.

(2) Exhibit No. 1 indicates all offset operators and injection wells in Artesia Flood No. 3. A copy of this application and a waiver form is being sent to Kersey and Company as they are the offset operators to the proposed expansion. This waiver will be forwarded to you as soon as it is received.

(3) Exhibit No. 2 indicates present injection well data. It is evident that some of the injection wells are not as receptive to water injection as others, thus, it is desirable to place wells on injection as early as responses warrant in order to maintain a flood balance.

(4) Exhibit No. 3 gives performance curves for the overall waterflood project.

Oil Conservation Commission  
January 28, 1963  
Page 2

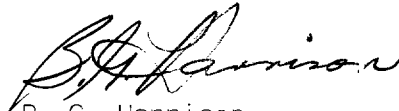
Resler Yates Well No. 338 was completed in the following manner:

8-5/8", 24# surface casing is set at 463' and cemented with 100 sacks of one-one posmix and 50 sacks regular neat cement. The hole was drilled to a total depth of 2043'. New 4½", 9.5#, J-55 casing is set at 2043' and cemented with 100 sacks of one-one posmix and 50 sacks of regular neat cement. The casing is perforated in the First Grayburg from 2004' to 2018' with two jet perforations per foot. The well will be equipped with 2-3/8" cement lined tubing and tension type packer set at approximately 200' - well below the depth of the top of the cement outside the 4½" casing. Water is to be injected down the tubing, through the casing perforations into the First Grayburg formation.

Any consideration by the Commission in expediting this matter will be greatly appreciated.

Yours very truly,

GRARIDGE CORPORATION



B. G. Harrison  
Manager of Secondary Recovery

BGH:vw  
Attachments (4)

cc: Oil Conservation Commission  
P. O. Drawer DD  
Artesia, New Mexico

Mr. Frank Irby

## NEW MEXICO OIL CONSERVATION COMMISSION

## GAS-OIL RATIO REPORT

OPERATOR Graridge Corporation POOL Artesia  
ADDRESS Box 752, Breckenridge, Texas MONTH OF January, 19 63  
SCHEDULED TEST \_\_\_\_\_ COMPLETION TEST \_\_\_\_\_ SPECIAL TEST X (Check One)  
(See Instructions on Reverse Side)

Lease	Well No.	Date of Test	Producing Method	Choke Size	Test Hours	Daily Allowable Bbls.	Production During Test			GOR Cu. Ft. Per Bbl.
							Water Bbls.	Oil Bbls.	Gas MCF	
<u>BEFORE WATERFLOOD RESPONSE</u>										
Resler Yates State	8	2/18/61	Pump	--	24	2	0	7.1	TSTM	TSTM
<u>AFTER WATERFLOOD RESPONSE</u>										
Resler Yates State	8	8/20/61	Pump	--	24	20	1.1	62.7	TSTM	TSTM
	8	2/9/62	"	--	24	75	23.3	77.1	TSTM	TSTM
	8	10/9/62	"	--	24	75	54.5	12.4	TSTM	TSTM

No well will be assigned an allowable greater than the amount of oil produced on the official test.

During gas-oil ratio test, each well shall be produced at a rate not exceeding the top unit allowable for the pool in which well is located by more than 25 percent. Operator is encouraged to take advantage of this 25 percent tolerance in order that well can be assigned increased allowables when authorized by the Commission.

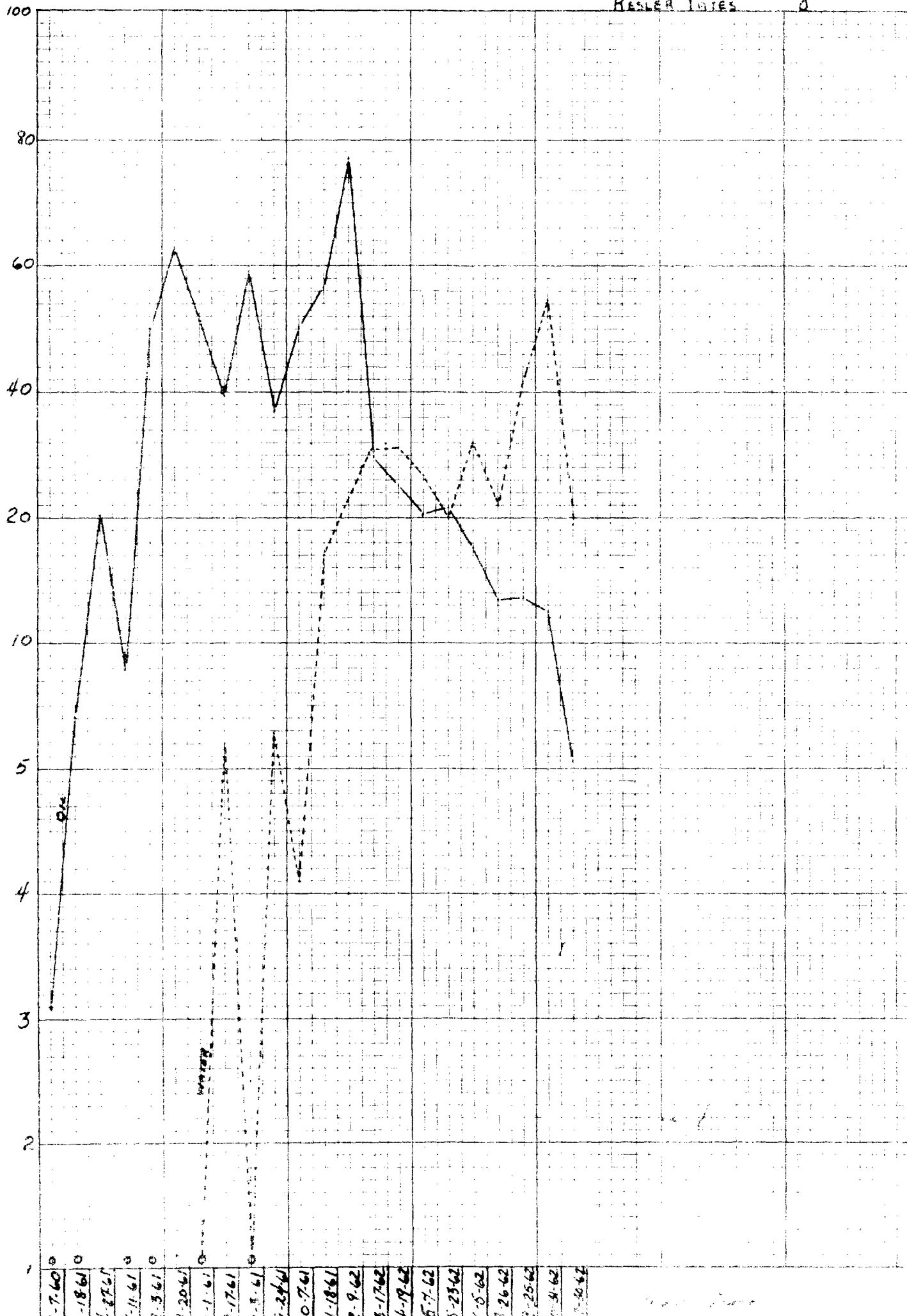
Gas volumes must be reported in MCF measured at a pressure base of 15.025 psia and a temperature of 60 degrees F. Specific gravity base will be 0.60.

Mail original and one copy of this report to the district office of the New Mexico Oil Conservation Commission. In accordance with Rule 301 and Appropriate Pool Rules.

(I certify that the information given is true and complete to the best of my knowledge.)

Date January 28, 1963

GRARIDGE CORPORATION  
By B. G. Harrison Company  
B. G. Harrison  
Manager of Secondary Recovery  
Title



RESLER YOTES

# GRARIDGE CORPORATION

MAIL OFFICE OCC  
1963 FEB 11 AM 8:19

IBEX BUILDING

POST OFFICE BOX 752

BRECKENRIDGE, TEXAS

January 28, 1963

Date Received		FEB 7 1963	
ROUTE TO		ROUTE TO	
	DATE CHECKED		DATE CHECKED
LC		RLE	
OHR		CRA	
TAF		JLMc	
FFD		BGE	
WFB		JAW	
BGH ✓ 2/7		JWC	
CWS			
Mail To:		FILE:	
Graham		WR	

Kersey and Company  
Booker Building  
P. O. Box 316  
Artesia, New Mexico

Gentlemen:

It is the desire of Graridge Corporation to expand the water injection program in the Artesia No. 3 Flood in Eddy County, New Mexico. The expansion is to include the following well:

<u>LEASE</u>	<u>WELL NO.</u>	<u>LOCATION</u>
Resler Yates State	338	Unit 1, Section 29, T18S, R28E

A fifteen day waiting period is set up by the Commission unless waivers are obtained from all offset operators.

In order to expedite matters, please sign and return one copy of this letter to this office if you have no objection to the proposed expansion.

Yours very truly,

GRARIDGE CORPORATION

*B. G. Harrison*  
B. G. Harrison  
Manager of Secondary Recovery

BGH:vw  
Enclosure

SIGNED BY *Harold Kersey*  
FOR *Kersey & Co.*  
DATE *2/4/63*

1963 FEB 6 PM 1:37  
BRECKENRIDGE CORPORATION  
IBEX BUILDING POST OFFICE BOX 752  
BRECKENRIDGE, TEXAS  
February 4, 1963

Oil Conservation Commission  
State of New Mexico  
State Capitol Building  
Santa Fe, New Mexico

Re: Application to convert to  
Water Injection Graridge  
Resler Yates State No. 338

Gentlemen:

We have received a copy of the letter written to Mr. A. L. Porter, Jr. on February 1, 1963 by Mr. Frank Irby concerning the above application.

In preparing the application, a typegraphical error was made in the setting depth for the 2-3/8" cement lined tubing. The application should properly read: The well will be equipped with 2-3/8" cement lined tubing and a tension type packer set at approximately 2000' - well below the depth of the top of the cement outside the 4½" casing.

We will appreciate your cooperation in correcting this error.

Yours very truly,

GRARIDGE CORPORATION



B. G. Harrison  
Manager of Secondary Recovery

BGH:vw

cc: Mr. Frank Irby



OFFICE OCC

STATE OF NEW MEXICO

STATE ENGINEER OFFICE

SANTA FE

S. E. REYNOLDS  
STATE ENGINEER

February 1, 1963

ADDRESS CORRESPONDENCE TO:  
STATE CAPITOL  
SANTA FE, N. M.

Mr. A. L. Porter, Jr.  
Secretary-Director  
Oil Conservation Commission  
Santa Fe, New Mexico

Dear Mr. Porter:

Reference is made to the application of Graridge Corporation dated January 28, 1963, which seeks administrative approval to convert one well, Resler Yates State, Well No. 338, Unit 1, Section 29, Twp. 18 S., Rge. 28 E., Eddy County, New Mexico, to water injection well.

Mr. Harrison states on the second page of his application "The well will be equipped with 2 3/8" cement-lined tubing and tension type packer set at approximately 200'--well below the depth of the top of the cement outside the 4 1/2" casing." I am reasonably confident that Mr. Harrison means 2000' instead of 200' because 200' is not likely to be below the depth of the top of the cement. This office offers no objection to the granting of the application provided the above-mentioned number is 2000.

Yours truly,

S. E. Reynolds  
State Engineer

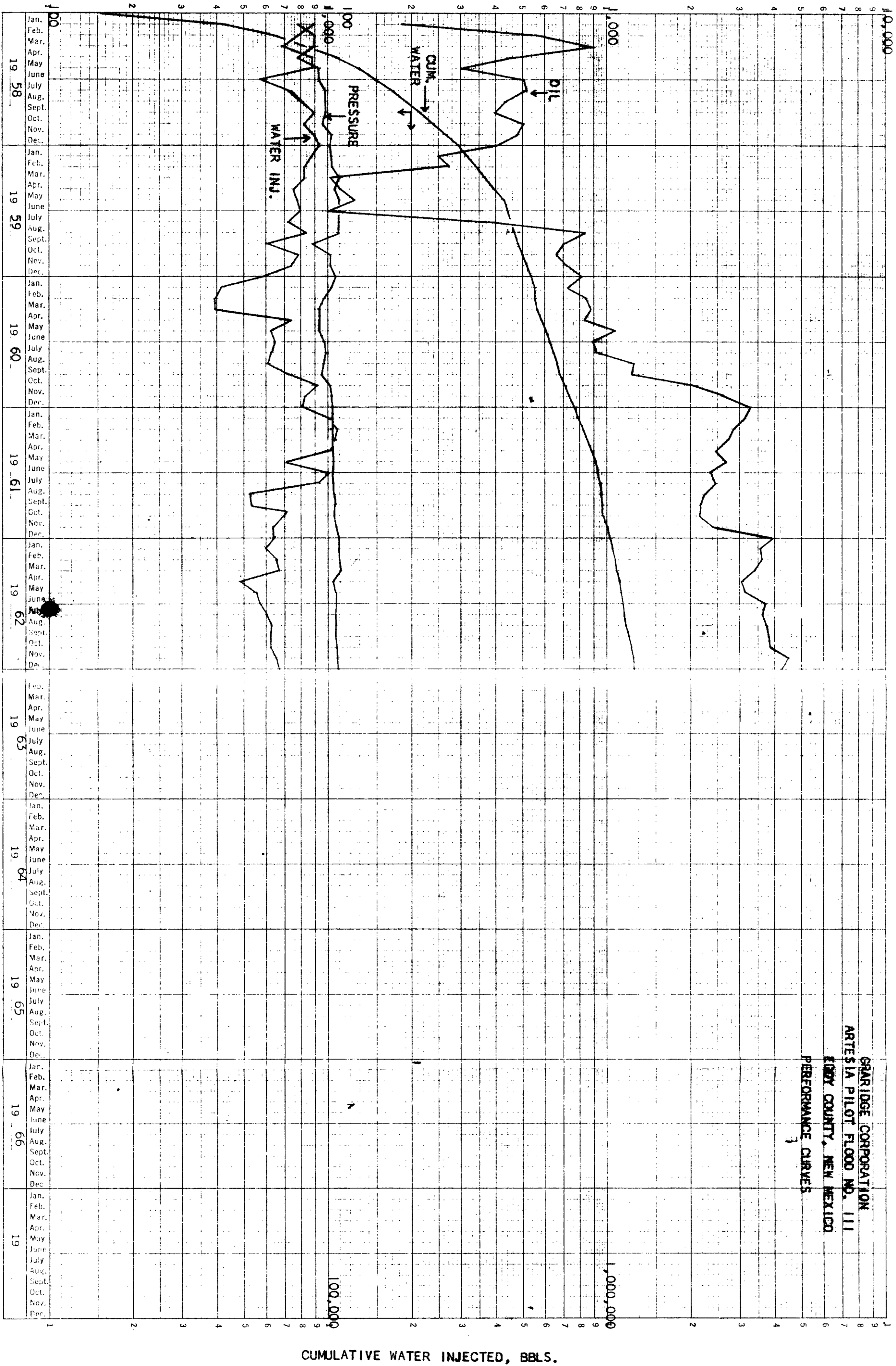
FEI/ma  
cc-Graridge Corp.  
F. H. Hennighausen

By: *Frank E. Irby*  
Frank E. Irby  
Chief  
Water Rights Division

WATER INJECTION, BBLS/DAY

INJECTION PRESSURE, PSIG.

OIL PRODUCTION, BBLS/MO.



GRARIDGE CORPORATION  
ARTESIA PILOT FLOOD NO. 111  
EDDY COUNTY, NEW MEXICO  
PERFORMANCE CURVES

CUMULATIVE WATER INJECTED, BBLS.





LARGE FORMAT  
EXHIBIT HAS  
BEEN REMOVED  
AND IS LOCATED  
IN THE NEXT FILE