



CONTINENTAL OIL COMPANY

P. O. BOX 460
HOBBS, NEW MEXICO

PRODUCTION DEPARTMENT
HOBBS DISTRICT
JACK MARSHALL
DISTRICT MANAGER
G. C. JAMIESON
ASSISTANT DISTRICT MANAGER

May 5, 1965

1001 NORTH TURNER
TELEPHONE: EX 3-4141

179
New Mexico Oil Conservation Commission (3)
Post Office Box 2088
Santa Fe, New Mexico

Attention of Mr. A. L. Porter, Jr., Secretary-Director

Gentlemen:

Re: Continental Oil Company
Application for Administrative
Approval to Convert Eastcap
Queen Unit Well No. 1 to Water
Injection

Continental Oil Company, operator of the Eastcap Queen Unit Waterflood, respectfully requests administrative approval under Rule 701-E to convert to water injection its Eastcap Queen Unit Well No. 1 - Unit I, Section 22, T-14S, R-31E, in the Caprock-Queen Pool, Chaves County, New Mexico. Original authority to initiate waterflooding in the Eastcap Queen Unit was granted by Order No. R-2550.

It is proposed to inject water into the Queen formation through casing, provided it is successfully tested at 2,000 psi, otherwise through tubing, with packer set at approximately 2,500'. The source of the water will be Ogallala fresh water currently being purchased from Cities Service Oil Company. Anticipated injection rate is from 300 to 400 barrels water per day through perforations opposite the Queen sand from 3,095' to 3,098'.

In support of this application, we attach hereto the following exhibits:

1. Lease plat indicating lessees of record within two mile radius of the proposed injection well, and location of all wells within such leases.
2. Gamma ray-Neutron log run in Eastcap Queen Unit Well No. 1.
3. Schematic diagram of the well indicating casing sizes, setting depths, amount and top of cement, and proposed tubing and packer setting depth.
4. Copy of C-116 showing response to water injection in Well No. 4, the immediate south offset.

Copies of this application, along with all pertinent attachments are being sent by certified mail to each offset operator and to the New Mexico State Engineer.

Yours very truly,



GCJ-DFW
Enc.

cc: NMOCC-Hobbs RGP JWK GW

(By Certified Mail)

Mr. Frank Irby
c/o State Engineer
P. O. Box 1079
Santa Fe, New Mexico

Cities Service Oil Company,
Operator Drickey Queen Unit
P. O. Box 69
Hobbs, New Mexico

Union Oil Company of California,
Operator, South Caprock Queen Unit
619 West Texas
Midland, Texas

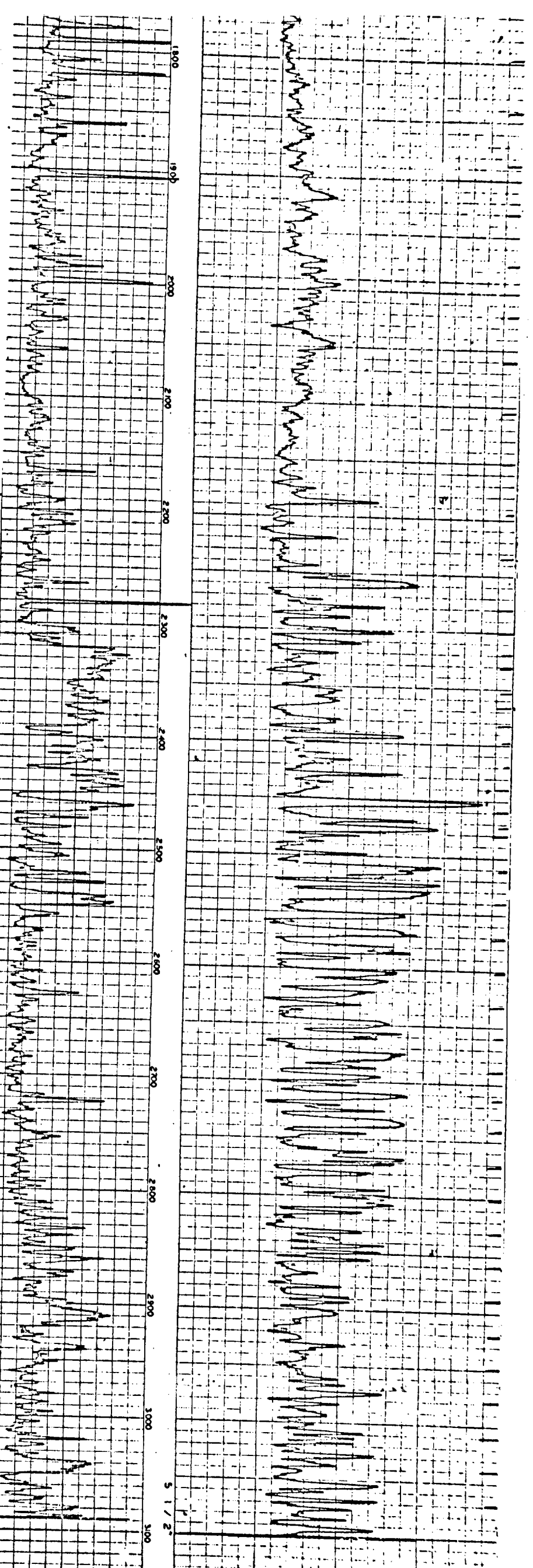
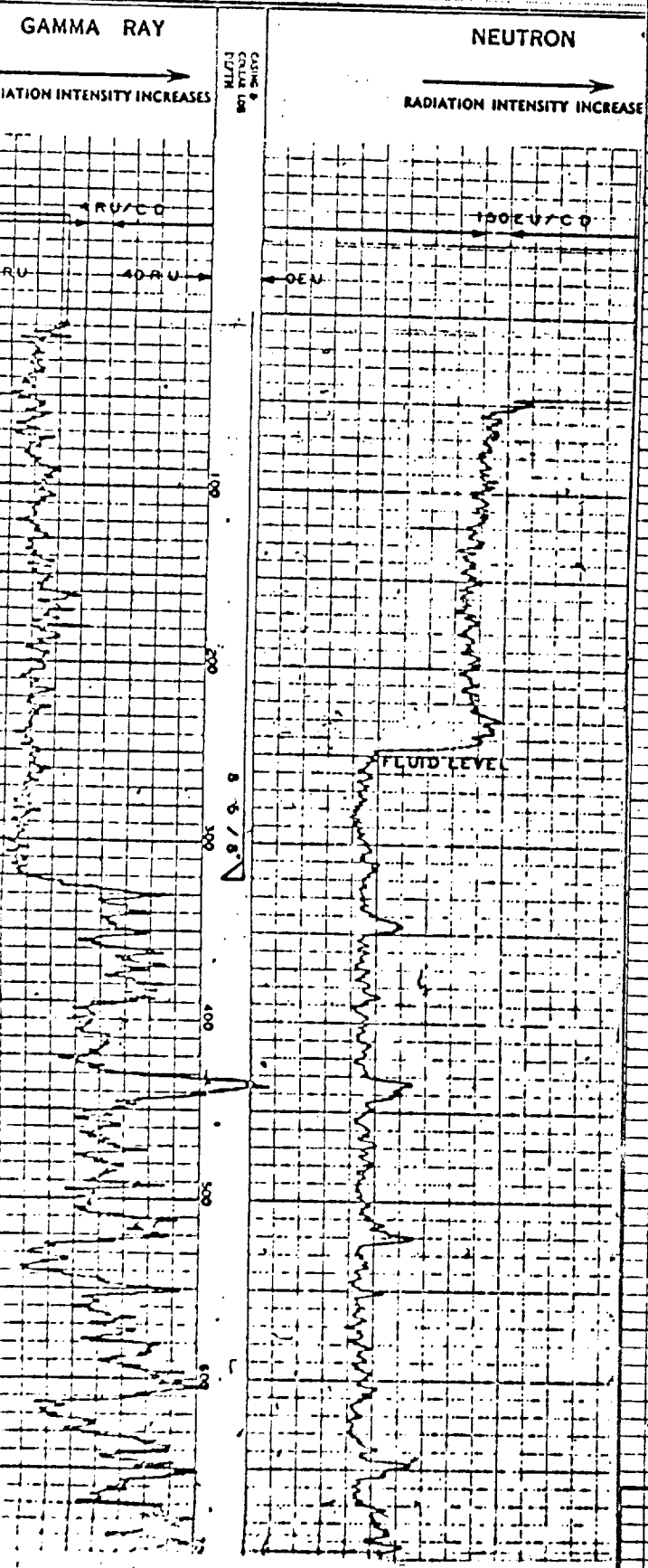
209

COMPANY: JOSEPH I. O'NEIL		Well Location
(EASTCAP QUEEN UNIT No. 1)		1650' FSL & 560' FSL OF SECTION 22-148-31E
WELL: F. H. MOORE NO. 1		
FIELD: DRICKY QUEENS		
LOCATION: SEC 22-148-31E		
COUNTY: CHATELAIN	STATE: N. MEX.	
LOG INFO	TOP KELLY DRIVE BURNING ELEV. 4408'	
DRILLING	TOP KELLY DRIVE BURNING ELEV. 4397'	
FROM DATUM	T. & D. B. IN 11' ABOVE O. L. ELEV. 4397'	

TYPE OF LOG	GAMMA RAY	NEUTRON
RUN NO.	ONE-54	ONE-54
DATE	7-10-58	7-10-58
TOTAL DEPTH (DRILLER) FEET	3100	3100
EFFECTIVE DEPTH (DRILLER) FEET	3100	3100
TOP OF LOGGED INTERVAL	SURFACE	SURFACE
BOTTOM OF LOGGED INTERVAL	3009	3101
TYPE OF FLUID IN HOLE	WATER	WATER
FLUID LEVEL	2045'	
MAXIMUM RECORDED TEMP.		
SOURCE STRENGTH & TYPE	510A3	
SOURCE SPACING - IN.	13.5	
ECTOR CLASS	SCINT.	SCINT.
ECTOR TYPE	201	201
LENGTH OF MEAS. DEVICE - IN.	4	4
D. OF INSTRUMENT - IN.	3 5/8	3 5/8
TIME CONSTANT - SECONDS	2.0-0.2	2.0-0.2
LOGGING SPEED FT./MIN.	30-60	30-60
STATISTICAL VARIATION - IN.	RECORDED	RECORDED
INSTRUMENT REFERENCE	5933	D168
RECORDED BY	GLITTON & SCHLOTTERBECK	BARR
WITNESSED BY		

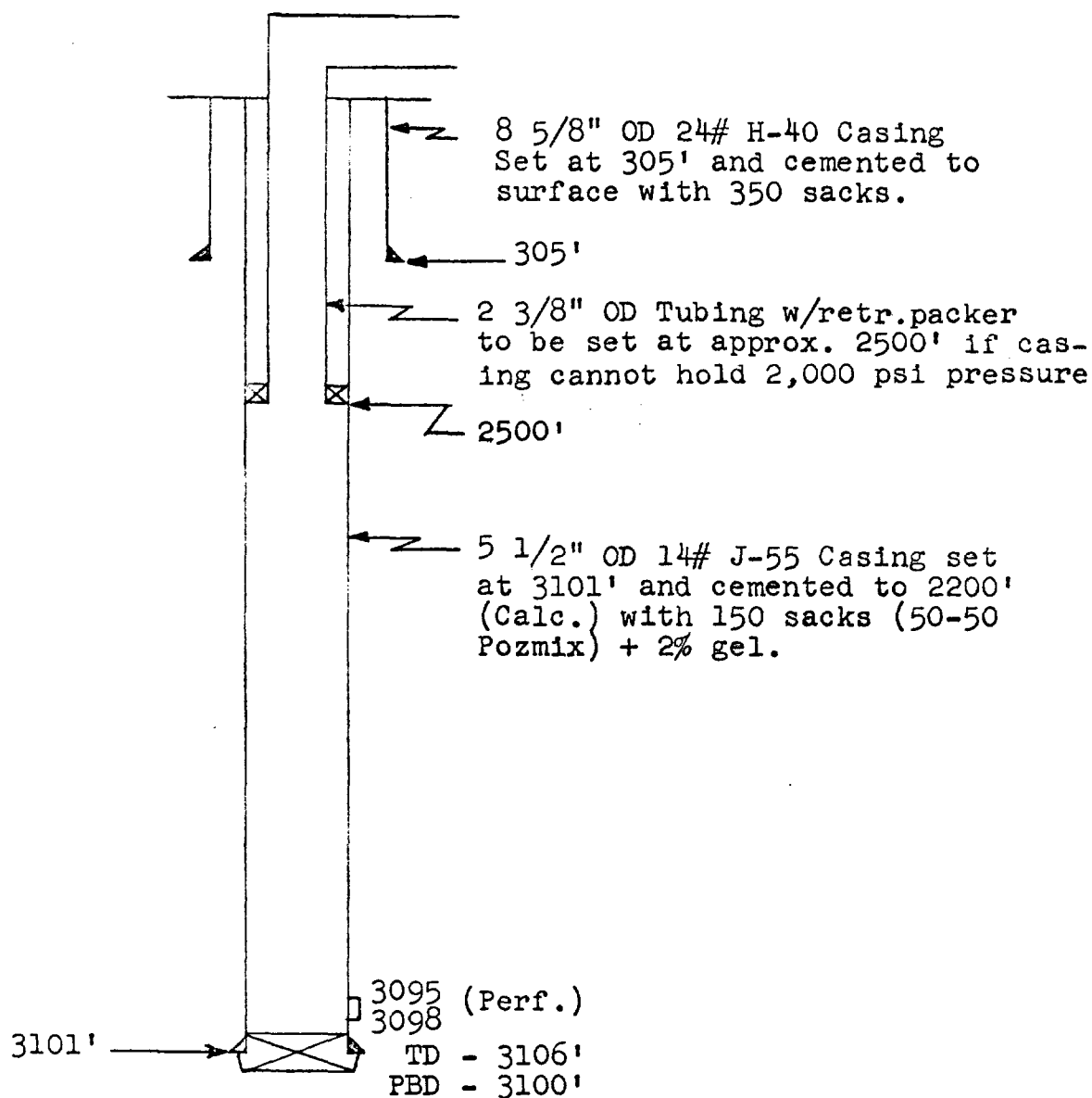
WELL RECORD			
BIT SIZE	CASING WT.-LB.	FROM WELL RECORD	FROM LOG
NO. 11	8 5/8	SURFACE TO 321	SURFACE TO
NO. 9 1/2	5 1/2	SURFACE TO 3100	SURFACE TO 3100
		TO	TO
		TO	TO
		TO	TO

LOCATION & ELEVATION UNAVAILABLE. REMARKS OR OTHER DATA



EASTCAP QUEEN UNIT NO. 1

Elev. - 4397' - Ground



Proposed Work

1. Check for fill - cleanout to PBD of 3100'.
2. Run tubing with packer, test with 2,000 psi pressure, and connect up well for injection as indicated. If casing passes pressure test, injection will be through casing; otherwise, as shown above.

C-116
Revised 1-1-65

No well will be assigned an allowable greater than the amount of oil produced on the official test.

During gas-oil ratio test, each well shall be produced at a rate not exceeding the top unit allowable for the pool in which well is located by more than 25 percent. Operator is encouraged to take advantage of this 25 percent tolerance in order that well can be assigned increased allowables when authorized by the Commission.

Gas volumes must be reported in MCF measured at a pressure base of 15,025 psia and a temperature of 60° F. Specific gravity base will be 0.60.

Report casing pressure in lieu of tubing pressure for any well producing through casing.

Mail original and one copy of this report to the district office of the New Mexico Oil Conservation Commission in accordance with Rule 301 and appropriate pool rules.

I hereby certify that the above information is true and complete to the best of my knowledge and belief.

Walter J. Butler
(Signature)
Supervising Engineer
(Title)
May 3, 1965
(Date)



STATE OF NEW MEXICO

STATE ENGINEER OFFICE

SANTA FE

S. E. REYNOLDS
STATE ENGINEER

ADDRESS CORRESPONDENCE TO:
STATE CAPITOL
SANTA FE, N. M.

May 26, 1965

Mr. A. L. Porter, Jr.
Secretary-Director
Oil Conservation Commission
Santa Fe, N. M.

Dear Mr. Porter:

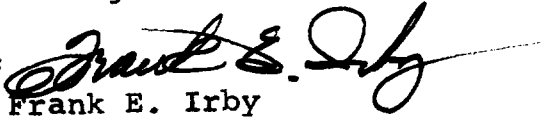
Reference is made to the application of Continental Oil Company submitted May 5, 1965 which seeks administrative approval to convert Eastcap Queen Unit Well No. 1 to water injection.

This office offers no objection to the granting of the application provided the casing is successfully tested at 2000 PSI and injection pressures not exceed 1800 PSI, and further provided that if the casing fails to successfully resist 2000 PSI pressure injection will be through tubing under packer set well below the top of the cement surrounding the 5½ inch casing.

FEI/ma
cc-Continental Oil Co.
F. H. Hennighausen

Yours truly,

S. E. Reynolds
State Engineer

By: 
Frank E. Irby
Chief
Water Rights Div.

New Mexico Oil Conservation Commission
Post Office Box 2088
Santa Fe, New Mexico

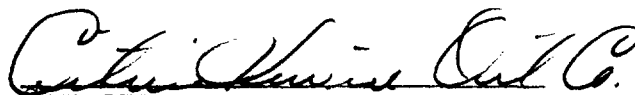
Attention of Mr. A. L. Porter, Jr., Secretary-Director

Gentlemen:

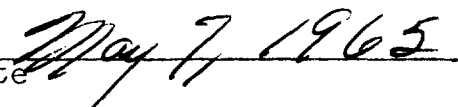
The undersigned has received a copy of the application of Continental Oil Company for permission to convert to water injection its Eastcap Queen Unit Well No. 1, located in Unit I, Section 22, T-14S, R-31E, Chaves County, New Mexico.

As an offset operator, you are hereby notified that we have no objection to the conversion of the well as requested by Continental.

Yours very truly,


Company


By


Date

LARGE FORMAT
EXHIBIT HAS
BEEN REMOVED
AND IS LOCATED
IN THE NEXT FILE