

GENERAL AMERICAN OIL COMPANY OF TEXAS

DISTRICT OFFICE
BOX 418
LOCO HILLS, NEW MEXICO
October 5, 1965

WFX - 221
Inc. A 2. V

Mr. A. L. Porter
Secretary-Director
New Mexico Oil Conservation Commission
P. O. Box 2088
Santa Fe, New Mexico

Dear Sir:

Pursuant to Section 5 of Rule 701-E, General American Oil Company of Texas hereby makes application for administrative approval to convert its Keely C (LC-028784) (c) #18 well and its Keely C (LC-028784) (c) #32 well to water injection wells. Keely C #18 has had response and Keely C #32 is a direct offset to #18. Previous orders covering this project include the original Order No. R-2324 and expansion Order No. WFX 191.

It will be noted from the plat that wells Keely C 25,37,18 and 32 are in a Northwest, Southeast line of direction. Water from Keely C #25 effected #37 which was then converted and #37 effected #18 which we wish to convert at this time. It is felt that a fracture system may exist in the area in a Northwest, Southeast direction and if this proves to be true it would determine the injection pattern for the entire flood. It is believed at this time that these four wells would fit the ultimate pattern for a full scale flood. We feel that the conversion of these two wells are necessary to evaluate further possibilities of this pilot project.

Pertinent data concerning Keely C #18:

Keely C #18 located 1980 feet from south and west lines of Section 25, Twp. 17-S, Rge. 29-E, Eddy County, New Mexico was completed 9-6-44 at a total depth of 3225'. This well was deepened to 3262' in November, 1950. Cumulative production to 7-1-65 was 177,506 barrels.

Pertinent data concerning Keely C #32:

Keely C #32 located 2615 feet from south line and 1345 feet from west line of Section 25, Twp. 17-S, Rge. 29-E, Eddy County, New Mexico was completed 10-13-49 at a total depth of 3072'. This well was deepened to 3235' in February, 1951. Cumulative production to 7-1-65 was 58,729 barrels.

Water will be injected through 2" tubing into the open hole below a packer set approximately fifty feet inside the 7" casing. Injection will be into the San Andres lime pay consisting of four intervals from 3025' to 3262'.

Page 2 of 2
October 5, 1965

The type of fluid injected will be fresh water purchased from Double Eagle Water Company (formerly Caprock Water Company). The source of the water will be from the Caprock area possibly supplemented from time to time with water from the Red Lake basin area. Injection volumes should not exceed 1000 barrels water per day or be less than 200 barrels per day.

Enclosed herewith are the following as required by Rule 701:

1. Plat depicting location of Keely C #18 and Keely C #32 and all wells within a radius of two miles showing the formation from which they are producing or have produced.
2. Forms C-116 listing periodic tests which indicate response to injection on Keely C #18.
3. Portions of the Radioactivity log on Keely C #18.
4. Schematic diagram of each well showing casing strings, amount of cement, open hole intervals, proposed packer setting, etc.

A copy of the application with all enclosures is being forwarded to the office of the State Engineer. Since there are no offset operators no outside companies are being notified.

Respectfully submitted,

GENERAL AMERICAN OIL COMPANY OF TEXAS

By: 
R. J. Heard
District Superintendent

RJH/rlc
Encls.

NEW MEXICO OIL CONSERVATION COMMISSION
GAS-OIL RATIO TESTS

C-116
Revised 1-1-65

Operator General American Oil Company of Texas		Pool Grayburg-Jackson		County Eddy								
Address P. O. Box 416, Loco Hills, New Mexico		TYPE OF TEST - (X)		Completion <input type="checkbox"/> Special <input checked="" type="checkbox"/>								
LEASE NAME	WELL NO.	LOCATION		DATE OF TEST	CHOKE SIZE	TBG. PRESS.	DAILY ALLOW-ABLE	LENGTH OF TEST HOURS	PROD. DURING TEST			GAS - OIL RATIO CU. FT./BBL.
		U	S						T	R	WATER BBLs.	
Kaaly C	18			7-1-64					2		8	
				1-1-65				4		10		
				2-15-65				36	33	19		
				4-19-65				28	33	13		
				5-11-65				9	33	16		
				6-1-65				10	33	15		
				7-13-65				25	33	8		
				8-3-65				25	33	18		
				9-7-65				23	33	8		
				9-18-65				13	33	5		
				9-19-65				20		0		
				9-20-65				20		0		

No well will be assigned an allowable greater than the amount of oil produced on the official test.


During gas-oil ratio test, each well shall be produced at a rate not exceeding the top unit allowable for the pool in which well is located by more than 25 percent. Operator is encouraged to take advantage of this 25 percent tolerance in order that well can be assigned increased allowables when authorized by the Commission.

Gas volumes must be reported in MCF measured at a pressure base of 15.025 psia and a temperature of 60° F. Specific gravity base will be 0.60.

Report casing pressure in lieu of tubing pressure for any well producing through casing.

Mail original and one copy of this report to the district office of the New Mexico Oil Conservation Commission in accordance with Rule 301 and appropriate pool rules.

I hereby certify that the above information is true and complete to the best of my knowledge and belief.


(Signature) **R. J. Heard**
District Superintendent
(Title)
October 5, 1965
(Date)

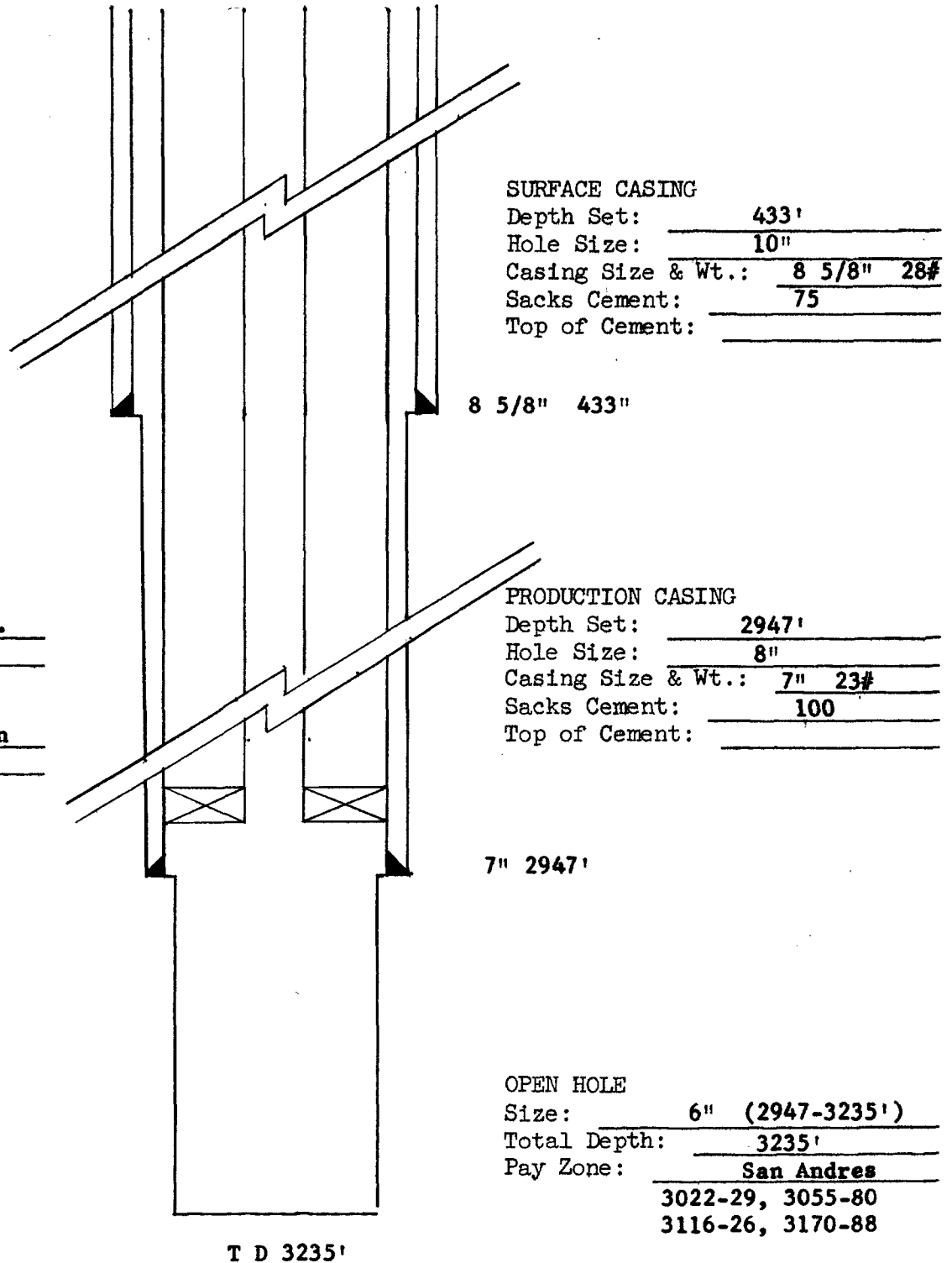
[illegible][illegible]

1. *Chlorophyll a* (Chl *a*)
 2. *Chlorophyll b* (Chl *b*)
 3. *Chlorophyll c* (Chl *c*)
 4. *Chlorophyll d* (Chl *d*)
 5. *Chlorophyll e* (Chl *e*)
 6. *Chlorophyll f* (Chl *f*)
 7. *Chlorophyll g* (Chl *g*)
 8. *Chlorophyll h* (Chl *h*)
 9. *Chlorophyll i* (Chl *i*)
 10. *Chlorophyll j* (Chl *j*)
 11. *Chlorophyll k* (Chl *k*)
 12. *Chlorophyll l* (Chl *l*)
 13. *Chlorophyll m* (Chl *m*)
 14. *Chlorophyll n* (Chl *n*)
 15. *Chlorophyll o* (Chl *o*)
 16. *Chlorophyll p* (Chl *p*)
 17. *Chlorophyll q* (Chl *q*)
 18. *Chlorophyll r* (Chl *r*)
 19. *Chlorophyll s* (Chl *s*)
 20. *Chlorophyll t* (Chl *t*)
 21. *Chlorophyll u* (Chl *u*)
 22. *Chlorophyll v* (Chl *v*)
 23. *Chlorophyll w* (Chl *w*)
 24. *Chlorophyll x* (Chl *x*)
 25. *Chlorophyll y* (Chl *y*)
 26. *Chlorophyll z* (Chl *z*)
 27. *Chlorophyll aa* (Chl *aa*)
 28. *Chlorophyll ab* (Chl *ab*)
 29. *Chlorophyll ac* (Chl *ac*)
 30. *Chlorophyll ad* (Chl *ad*)
 31. *Chlorophyll ae* (Chl *ae*)
 32. *Chlorophyll af* (Chl *af*)
 33. *Chlorophyll ag* (Chl *ag*)
 34. *Chlorophyll ah* (Chl *ah*)
 35. *Chlorophyll ai* (Chl *ai*)
 36. *Chlorophyll aj* (Chl *aj*)
 37. *Chlorophyll ak* (Chl *ak*)
 38. *Chlorophyll al* (Chl *al*)
 39. *Chlorophyll am* (Chl *am*)
 40. *Chlorophyll an* (Chl *an*)
 41. *Chlorophyll ao* (Chl *ao*)
 42. *Chlorophyll ap* (Chl *ap*)
 43. *Chlorophyll aq* (Chl *aq*)
 44. *Chlorophyll ar* (Chl *ar*)
 45. *Chlorophyll as* (Chl *as*)
 46. *Chlorophyll at* (Chl *at*)
 47. *Chlorophyll au* (Chl *au*)
 48. *Chlorophyll av* (Chl *av*)
 49. *Chlorophyll aw* (Chl *aw*)
 50. *Chlorophyll ax* (Chl *ax*)
 51. *Chlorophyll ay* (Chl *ay*)
 52. *Chlorophyll az* (Chl *az*)
 53. *Chlorophyll aza* (Chl *aza*)
 54. *Chlorophyll abz* (Chl *abz*)
 55. *Chlorophyll acz* (Chl *acz*)
 56. *Chlorophyll adz* (Chl *adz*)
 57. *Chlorophyll aez* (Chl *aez*)
 58. *Chlorophyll afz* (Chl *afz*)
 59. *Chlorophyll agz* (Chl *agz*)
 60. *Chlorophyll ahz* (Chl *ahz*)
 61. *Chlorophyll aiz* (Chl *aiz*)
 62. *Chlorophyll ajz* (Chl *ajz*)
 63. *Chlorophyll akz* (Chl *akz*)
 64. *Chlorophyll alz* (Chl *alz*)
 65. *Chlorophyll amz* (Chl *amz*)
 66. *Chlorophyll anz* (Chl *anz*)
 67. *Chlorophyll aoz* (Chl *aoz*)
 68. *Chlorophyll apz* (Chl *apz*)
 69. *Chlorophyll aqz* (Chl *aqz*)
 70. *Chlorophyll arz* (Chl *arz*)
 71. *Chlorophyll asz* (Chl *asz*)
 72. *Chlorophyll atz* (Chl *atz*)
 73. *Chlorophyll auz* (Chl *auz*)
 74. *Chlorophyll avz* (Chl *avz*)
 75. *Chlorophyll awz* (Chl *awz*)
 76. *Chlorophyll axz* (Chl *axz*)
 77. *Chlorophyll ayz* (Chl *ayz*)
 78. *Chlorophyll azz* (Chl *azz*)
 79. *Chlorophyll azaa* (Chl *aza*)
 80. *Chlorophyll abz* (Chl *abz*)
 81. *Chlorophyll acz* (Chl *acz*)
 82. *Chlorophyll adz* (Chl *adz*)
 83. *Chlorophyll aez* (Chl *aez*)
 84. *Chlorophyll afz* (Chl *afz*)
 85. *Chlorophyll agz* (Chl *agz*)
 86. *Chlorophyll ahz* (Chl *ahz*)
 87. *Chlorophyll aiz* (Chl *aiz*)
 88. *Chlorophyll ajz* (Chl *ajz*)
 89. *Chlorophyll akz* (Chl *akz*)
 90. *Chlorophyll alz* (Chl *alz*)
 91. *Chlorophyll amz* (Chl *amz*)
 92. *Chlorophyll anz* (Chl *anz*)
 93. *Chlorophyll aoz* (Chl *aoz*)
 94. *Chlorophyll apz* (Chl *apz*)
 95. *Chlorophyll aqz* (Chl *aqz*)
 96. *Chlorophyll arz* (Chl *arz*)
 97. *Chlorophyll asz* (Chl *asz*)
 98. *Chlorophyll atz* (Chl *atz*)
 99. *Chlorophyll auz* (Chl *auz*)
 100. *Chlorophyll avz* (Chl *avz*)
 101. *Chlorophyll awz* (Chl *awz*)
 102. *Chlorophyll axz* (Chl *axz*)
 103. *Chlorophyll ayz* (Chl *ayz*)
 104. *Chlorophyll azz* (Chl *azz*)
 105. *Chlorophyll azaa* (Chl *aza*)
 106. *Chlorophyll abz* (Chl *abz*)
 107. *Chlorophyll acz* (Chl *acz*)
 108. *Chlorophyll adz* (Chl *adz*)
 109. *Chlorophyll aez* (Chl *aez*)
 110. *Chlorophyll afz* (Chl *afz*)
 111. *Chlorophyll agz* (Chl *agz*)
 112. *Chlorophyll ahz* (Chl *ahz*)
 113. *Chlorophyll aiz* (Chl *aiz*)
 114. *Chlorophyll ajz* (Chl *ajz*)
 115. *Chlorophyll akz* (Chl *akz*)
 116. *Chlorophyll alz* (Chl *alz*)
 117. *Chlorophyll amz* (Chl *amz*)
 118. *Chlorophyll anz* (Chl *anz*)
 119. *Chlorophyll aoz* (Chl *aoz*)
 120. *Chlorophyll apz* (Chl *apz*)
 121. *Chlorophyll aqz* (Chl *aqz*)
 122. *Chlorophyll arz* (Chl *arz*)
 123. *Chlorophyll asz* (Chl *asz*)
 124. *Chlorophyll atz* (Chl *atz*)
 125. *Chlorophyll auz* (Chl *auz*)
 126. *Chlorophyll avz* (Chl *avz*)
 127. *Chlorophyll awz* (Chl *awz*)
 128. *Chlorophyll axz* (Chl *axz*)
 129. *Chlorophyll ayz* (Chl *ayz*)
 130. *Chlorophyll azz* (Chl *azz*)
 131. *Chlorophyll azaa* (Chl *aza*)
 132. *Chlorophyll abz* (Chl *abz*)
 133.

•

GENERAL AMERICAN OIL COMPANY OF TEXAS
SCHEMATIC DIAGRAM OF
PROPOSED INJECTION WELL

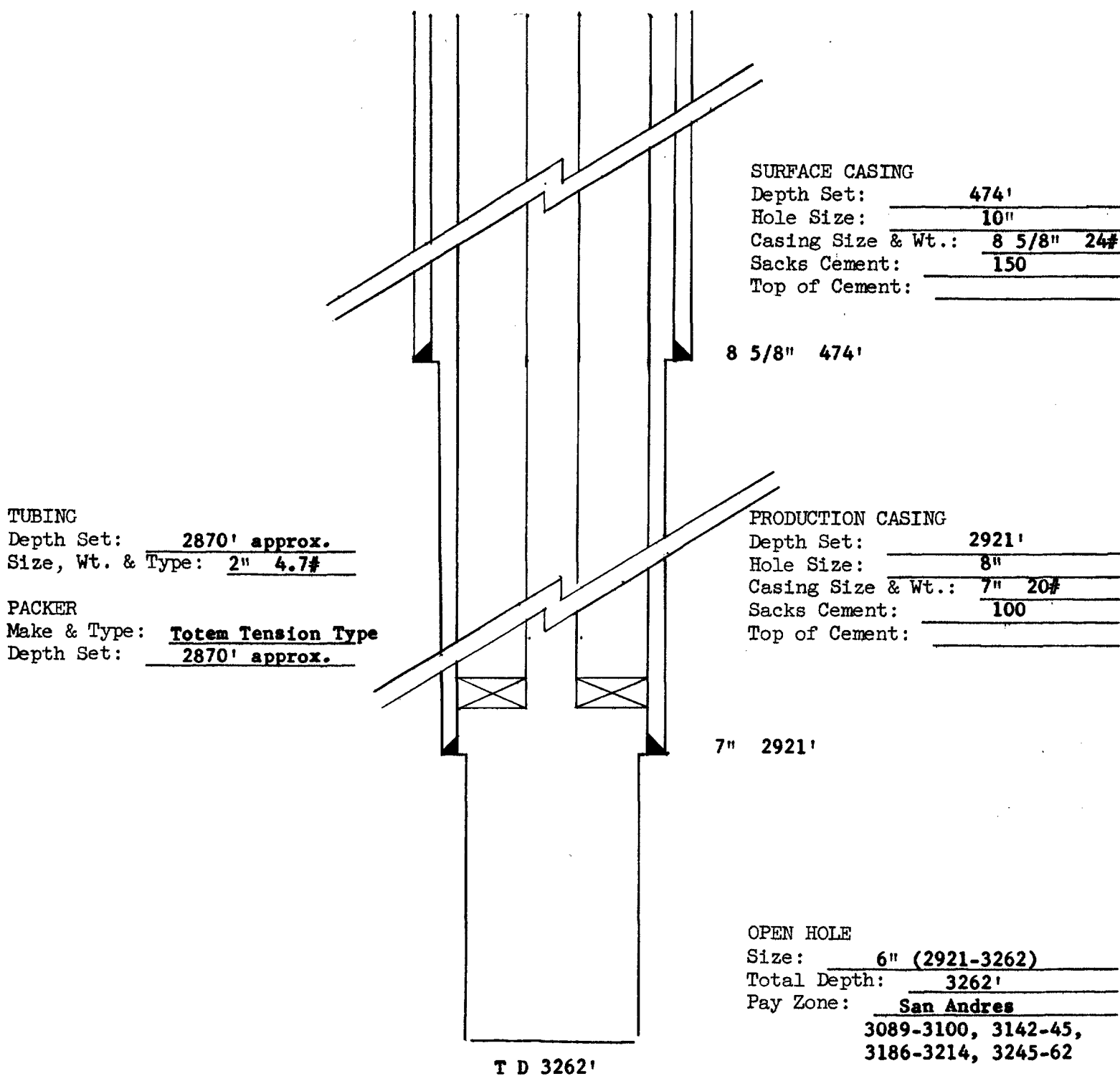
Lease and Well No.: Keely C #32
Location: 2615' feet from South line and
1345' feet from West line of
Section 25 TWP 17-8 RGE 29-E
N.M.P.M. Eddy County, New Mexico



Based on Smpis.

GENERAL AMERICAN OIL COMPANY OF TEXAS
SCHEMATIC DIAGRAM OF
PROPOSED INJECTION WELL

Lease and Well No.: Keely C #18
Location: 1980' feet from South line and
1980' feet from West line of
Section 25 TWP 17-S RGE 29-E
N.M.P.M. Eddy County, New Mexico



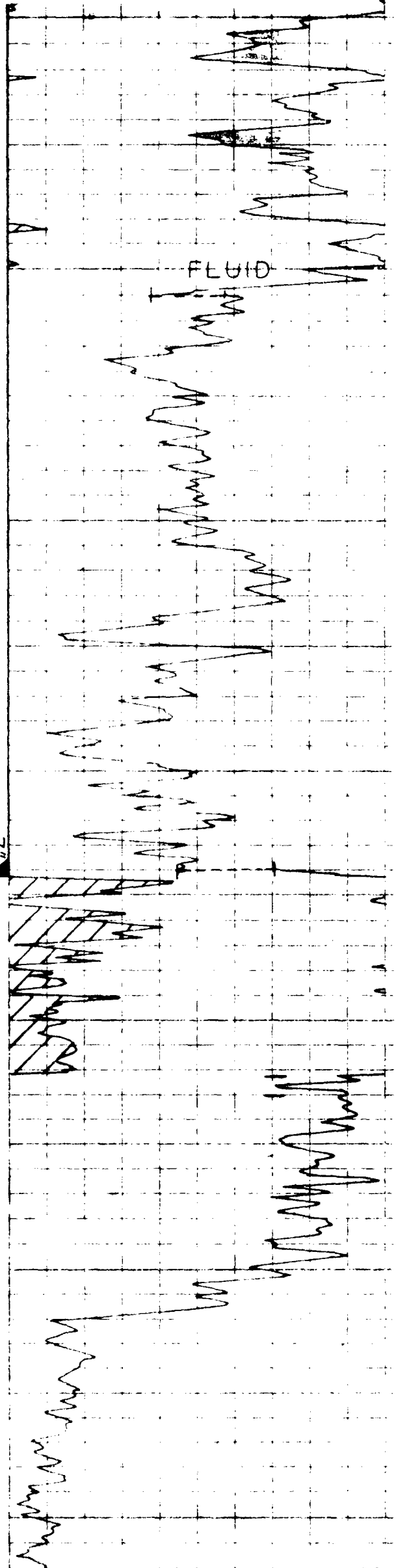
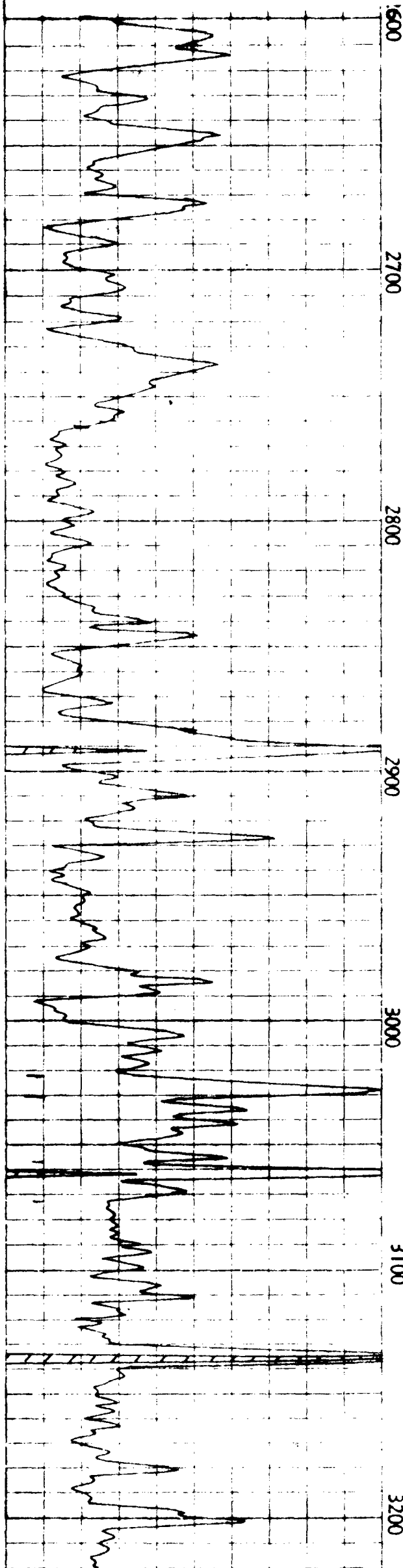
Based on Smpls.

KEELY C #32

25-178-29E

GRAYBURG-JACKSON

EDDY COUNTY, NEW MEXICO



October 5, 1965

Mr. Frank Irby
Office of State Engineer
Santa Fe, New Mexico

Dear Sir:

Attached is a copy of the application which General American Oil Company of Texas is filing with the New Mexico Oil Conservation Commission requesting administrative approval for the conversion of its Keely C #18 and its Keely C #32 wells to water injection.

We have enclosed copies of all exhibits furnished the Commission in support of our request. If any additional data is required please let us know.

If your office has no objection to these conversions please so notify the Commission.

Very truly yours,

GENERAL AMERICAN OIL COMPANY OF TEXAS

By: R. J. Heard
R. J. Heard
District Superintendent

RJH/rle
Encls.

100-100000

100-100000
100-100000
100-100000

100-100000

100-100000
100-100000
100-100000
100-100000

100-100000
100-100000
100-100000
100-100000

100-100000
100-100000
100-100000

100-100000

100-100000

100-100000

100-100000

100-100000

100-100000



STATE OF NEW MEXICO

STATE ENGINEER OFFICE

SANTA FE

S. E. REYNOLDS
STATE ENGINEER

October 22, 1965

ADDRESS CORRESPONDENCE TO:
STATE CAPITOL
SANTA FE, NEW MEXICO 87501

Mr. A. L. Porter, Jr.
Secretary-Director
Oil Conservation Commission
Santa Fe, New Mexico

Dear Mr. Porter:


Reference is made to the application of General American Oil Company of Texas which seeks administrative approval for the conversion of its Kelly C No. 18 and Kelly C No. 32 wells to water injection. These wells are located in Sec. 25, T. 17 S., R. 29 E.

This office offers no objection to the granting of the application provided the 2-inch tubing is internally plastic coated, the annulus between the tubing and casing is filled with inhibited fluid and a gage provided at the surface, and further provided that the packers are set well below the top of the cement surrounding the 7-inch casing in each well.

FEI/ma
cc-General Amer. Oil Co.
F. H. Hennighausen

Yours truly,

S. E. Reynolds
State Engineer

By: 
Frank E. Irby
Chief
Water Rights Div.

LARGE FORMAT
EXHIBIT HAS
BEEN REMOVED
AND IS LOCATED
IN THE NEXT FILE