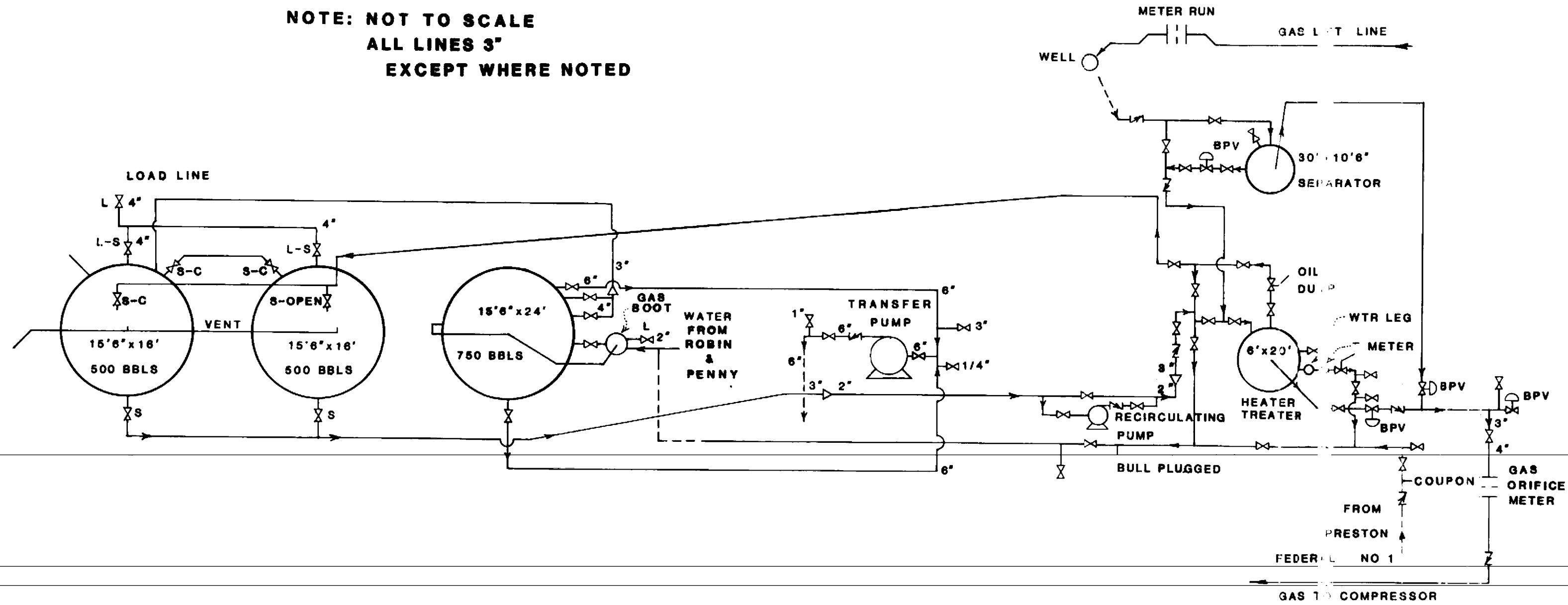


NOTE: NOT TO SCALE  
ALL LINES 3"  
EXCEPT WHERE NOTED



PRODUCTION DEPARTMENT	HOBBS DIVISION
<b>VICKIE FEDERAL NO. 1</b> <b>FEDERAL LEASE NO. NM-045275</b> <b>SW/NE SEC. 26, T20S R24E</b> <b>EDDY COUNTY, NEW MEXICO</b>	
1/20/83	