

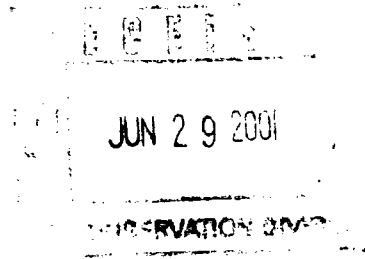
118337271

AMEND PC-916

N/R

June 19, 2001

New Mexico Oil Conservation Division  
Department of Energy & Minerals  
State of New Mexico  
2040 South Pacheco  
Santa Fe, NM 87505



Att: David Catanach, Engineering

RE: **Conoco, Inc.**, Hardy "36" State Lease, *Commingling Order PC 916*  
Section 36, T20S, R37E, NMPM, Lea County, New Mexico

Dear Mr. Catanach,

Concerning the above referenced Commingling Order PC 916, Conoco, Inc. has obtained permission to recomplete the **Hardy 36 State, Well #3** in the Wildcat, Blinebry pool. We are respectfully requesting permission to add the Wildcat, Blinebry pool to the existing Hardy 36 State facility which allows for production from the Hardy Simpson Ellenburger (96227), North Hardy Tubb-Drinkard (96356), South Cass Strawn (10460) and North Hardy Strawn (96893) pools. We believe that the most accurate and effective method of allocation would be by semi-annual well testing by well, by pool. The gas from each pool will be measured separately. The production from the Hardy Simpson Ellenburger and South Cass Strawn pool downhole commingling orders will be adhered to by the orders per well, as approved.

All commingled production is of identical ownership in all pools mentioned. The working interest and all royalty interest are identical. The crude oil from the battery is currently sold @ API 40 degrees and will continue to be sold at this determination. In the event any of the wells going into this battery produce at top allowable, the well(s) will be measured separately.

Please see attached a listing of the wells in the Hardy 36 State lease, the ownership, a lease plat and battery diagram. This battery is located in Unit Letter K, Section 36, T20S, R37E, NMPM, Lea County, New Mexico. Please contact me if you have any questions concerning this surface commingling application. Thank you.

Yours truly,

Ann E. Ritchie, Regulatory Agent  
**Conoco, Inc.**  
10 Desta Dr., Suite 100W  
Midland, TX 79705  
(915) 684-6381, (915) 682-1458-fax; e-mail: Wtor1948@aol.com

cc: Conoco-Midland/file; Oil Conservation Division-Hobbs;  
Commissioner of Public Lands-Oil & Gas Division

**Conoco, Inc.**  
Hardy "36" State Lease Facility  
Current Producing Wells  
Section 36, T20S, R37E, Lea County, New Mexico

**Hardy Simpson Ellenburger Production**

Hardy 36 State #1	Hardy Simp/Ellen & S. Cass Strawn	Unit Ltr. K
Hardy 36 State #15	Hardy Simp/Ellen	Unit Ltr. N
Hardy 36 State #21	Hardy Simp/Ellen/ & N. Hardy Strawn	Unit Ltr. B

30-025-32128  
33924  
33028

**Strawn Production**

Hardy 36 State #1	S. Cass Strawn & Hardy Simp/Ellen	Unit Ltr. K
Hardy 36 State, #21	N. Hardy Strawn & Hardy Simp/Ellen	Unit Ltr. L
Hardy 36 State, #26	North Hardy Strawn	Unit Ltr. B

34311

**North Hardy Tubb/Drinkard Production**

Hardy 36 State #2	North Hardy Tubb/Drink	Unit Ltr. K
Hardy 36 State #4	North Hardy Tubb/Drink	Unit Ltr. J
Hardy 36 State #7	North Hardy Tubb/Drink	Unit Ltr. E
Hardy 36 State #18	North Hardy Tubb/Drink	Unit Ltr. A
Hardy 36 State #19	North Hardy Tubb/Drink	Unit Ltr. H
Hardy 36 State #25	North Hardy Tubb/Drink	Unit Ltr. L

32473  
32513  
32530  
33027  
33202  
34102

**Wildcat, Blinebry Proposed Production**

Hardy 36 State #3	Wildcat, Blinebry	Unit Ltr. G
-------------------	-------------------	-------------

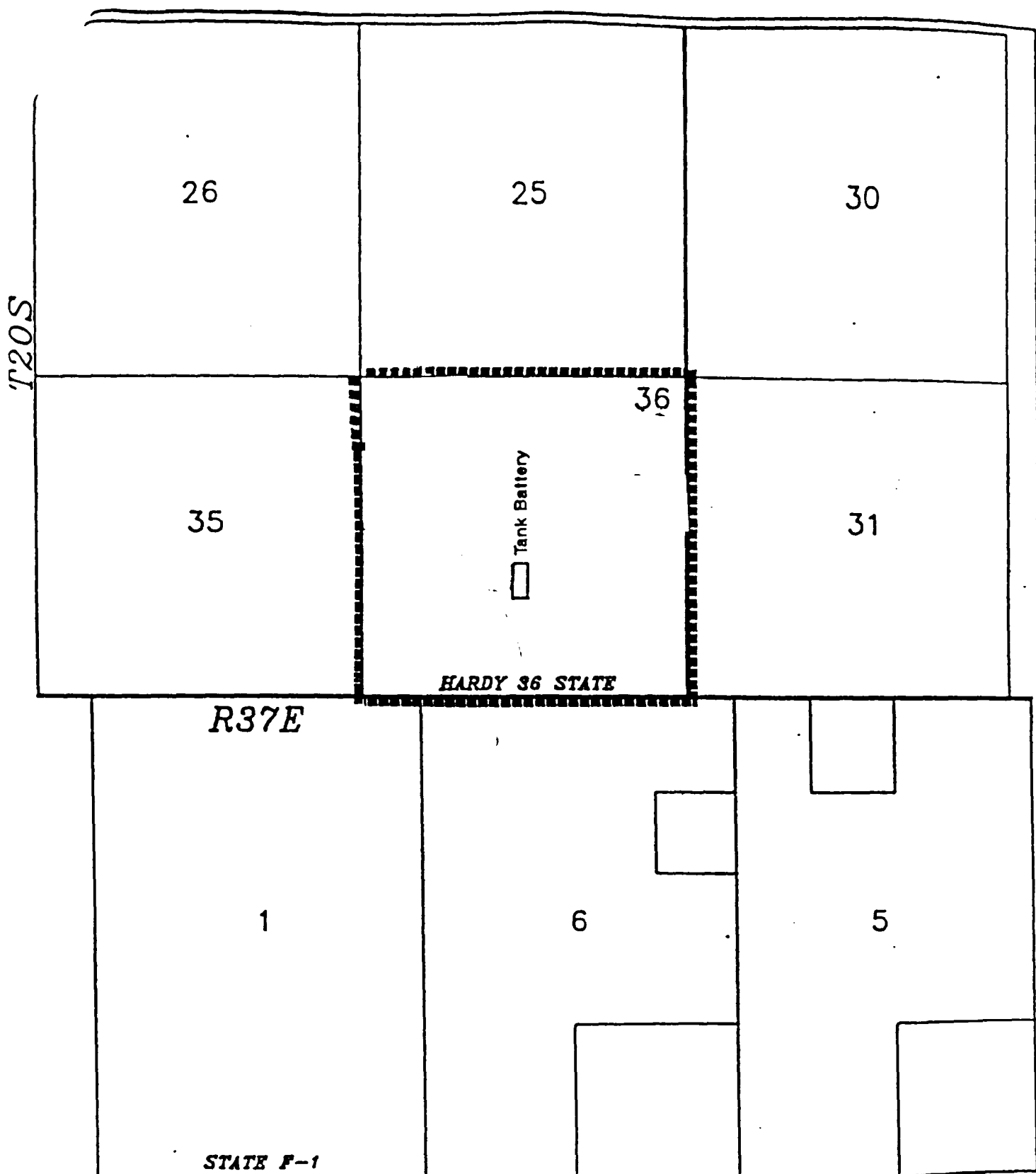
32479

**Average API Gravity/Pool:**

Hardy Simpson Ellenburger	42 API
North Hardy Tubb/Drinkard	41 API
Strawn	39 API
Blinebry	39 API

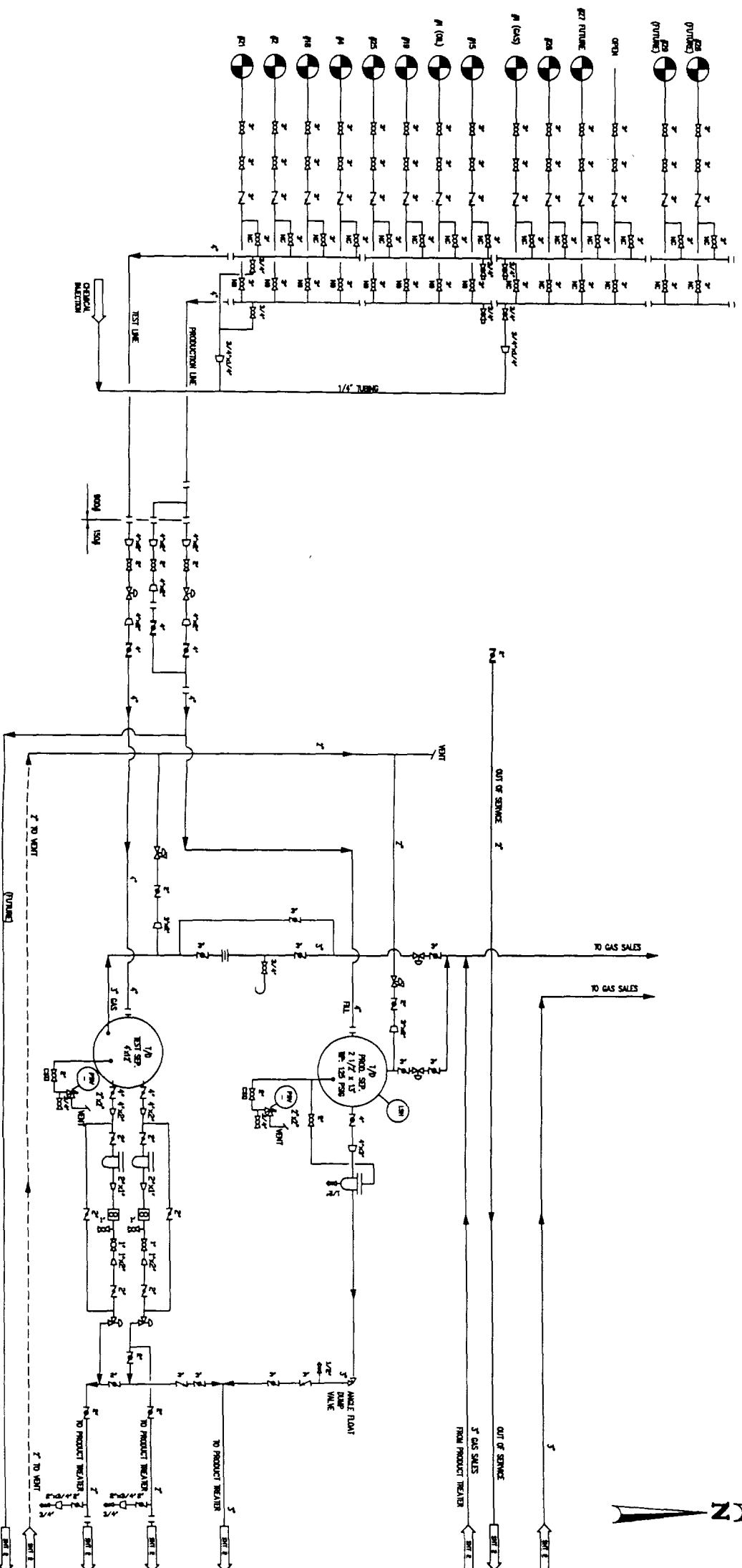
**Average Combined Hardy 36 State Lease Facility:**

Strawn, Tubb/Drinkard, Simpson-Ellenburger, Blinebry	40 API
--	--------



CONOCO INC.  
PRODUCTION DEPARTMENT  
HARDY 36 STATE LEASE  
LEA COUNTY, NEW MEXICO  
SCALE: 1" = 2000'



[illegible]

# Catanach, David

---

**From:** Wtor1948@aol.com  
**Sent:** Monday, August 13, 2001 8:35 AM  
**To:** DCATANACH@state.nm.us  
**Subject:** Fwd: Hardy 36 State, Com Order PC 916

Mr. Catanach,  
I was wondering if you had a chance to check on the status of the Conoco,  
Inc., SEMU #114 surface commingling application to add the Wildcat, Blinbry  
(as forwarded below).

Thank you,  
Ann E. Ritchie  
Conoco, Inc.  
Wtor1948@aol.com  
(915 684-6381)