



PC 901 2-13-95

OIL CONSERVATION DIVISION  
RECEIVED

85 JAN 21 PM 8 52

January 19, 1995

State of New Mexico  
Oil Conservation Division  
PO Box 2088  
Santa Fe, New Mexico 87501

**Attention:** Mr. William J. LeMay

RE: **SURFACE COMMINGLING PERMIT APPLICATION**

Texaco Exploration and Production Inc.  
T. Anderson #3 and #4  
Section 8, T-20S, R-37E  
Lea County, New Mexico

Gentlemen:

Texaco Exploration and Production Inc. *respectfully* requests permission to surface commingle produced hydrocarbons from the Monument Ellinebry and the Monument Tubb pools on the referenced lease. The T. Anderson #4 was recently completed in the Monument Tubb at a rate of 9 bopd, 97 bwpd, and 54 mcfd. It is proposed to surface commingle this production with the T. Anderson #3 which is producing 12 bopd, 7 bwpd, and 29 mcfd.

Texaco owns a 100% working interest in both zones on the lease. A common royalty of 12.5% applies to both zones of this Fee lease. Plats are attached that show the locations of the two wells and lease production facilities. The T. Anderson #4 will be tested monthly and total monthly production will be allocated to the wells by the subtraction method. Additional information is included on a separate page.

Yours very truly,

Darrell J. Carriger  
Engineering Assistant

DJC/s

Attachments

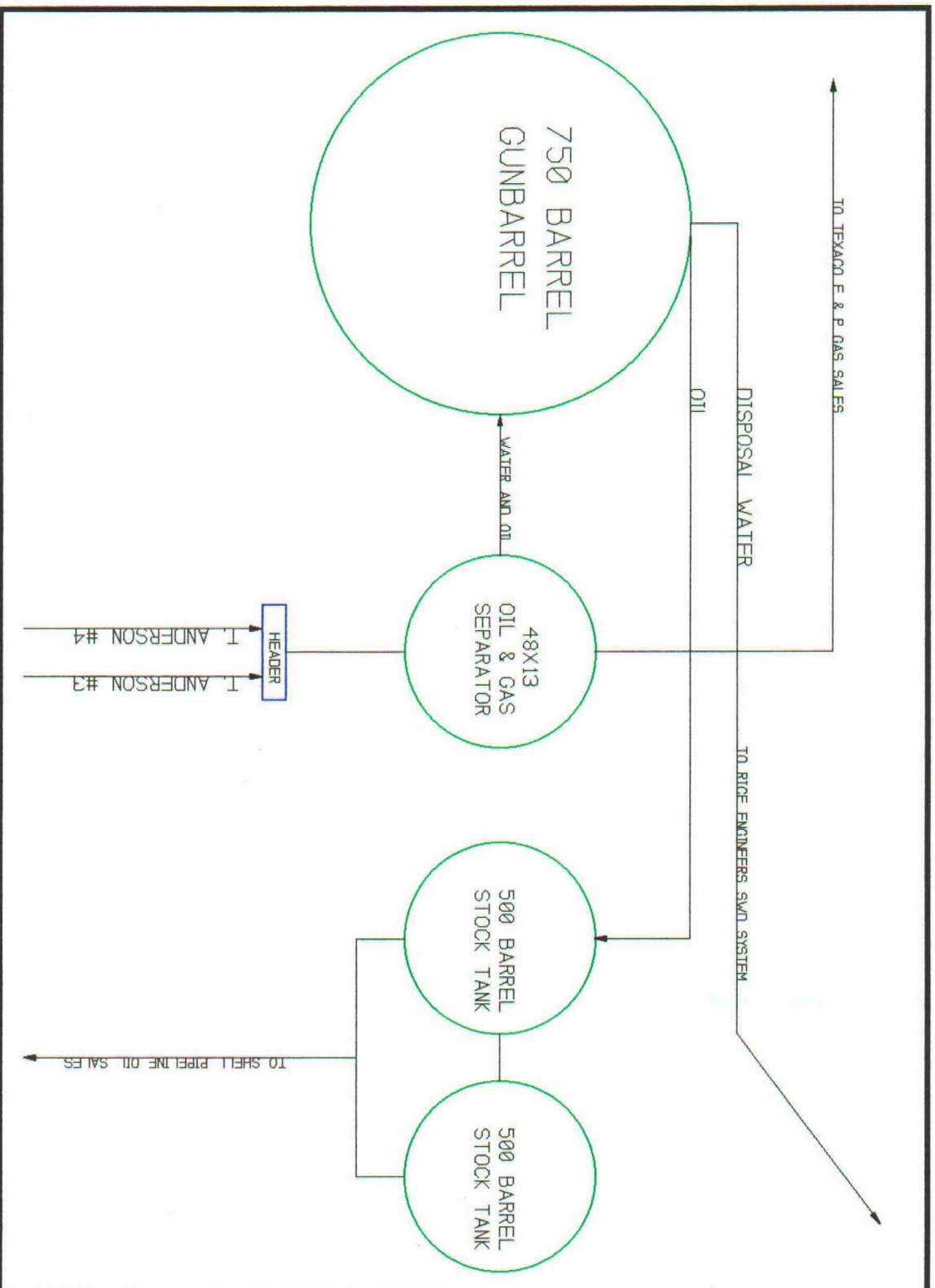
cc: NMOCD - Hobbs

**SURFACE COMMINGLING PERMIT  
T. ANDERSON LEASE  
LEA COUNTY, NEW MEXICO**

POOL NAME	# OF WELLS	API GRAVITY OIL	AVG PROD OIL (BBL/DAY)	PRICE \$/BBL (OIL)
MONUMENT BLINEBRY	1	39.7	12	\$15.94
MONUMENT TUBB	1	39.6	9	\$15.92
COMMINGLED TOTALS/AVERAGES		39.65	21	\$15.93

Estimated DAILY SALES **BEFORE** COMMINGLING: **\$335**  
ESTIMATED DAILY SALES **AFTER** COMMINGLING: **\$335**

# T. ANDERSON TANK BATTERY



## DISTRICT I

P.O. Box 1980, Hobbs, NM 88241-1980

## DISTRICT II

P.O. Box Drawer DD, Artesia, NM 88211-0719

## DISTRICT III

000 Rio Brazos Rd., Aztec, NM 87410

## DISTRICT IV

P.O. Box 2088, Santa Fe, NM 87504-2088

State of New Mexico  
Energy, Minerals and Natural Resources Department

## OIL CONSERVATION DIVISION

P.O. Box 2088  
Santa Fe, New Mexico 87504-2088

Form C-10.

Revised February 10, 1994

Instructions on back

Submit to Appropriate District Office

State Lease - 4 Copies

Fee Lease - 3 Copies

☐ AMENDED REPORT

## WELL LOCATION AND ACREAGE DEDICATION PLAT

<sup>1</sup> API Number 30 025 25292	<sup>2</sup> Pool Code 47080	<sup>3</sup> Pool Name MONUMENT TUBB
<sup>4</sup> Property Code 11131	<sup>5</sup> Property Name ANDERSON, T.	<sup>6</sup> Well No. 4
<sup>7</sup> OGRID Number 022351	<sup>8</sup> Operator Name TEXACO EXPLORATION & PRODUCTION INC.	<sup>9</sup> Elevation 3547' GL

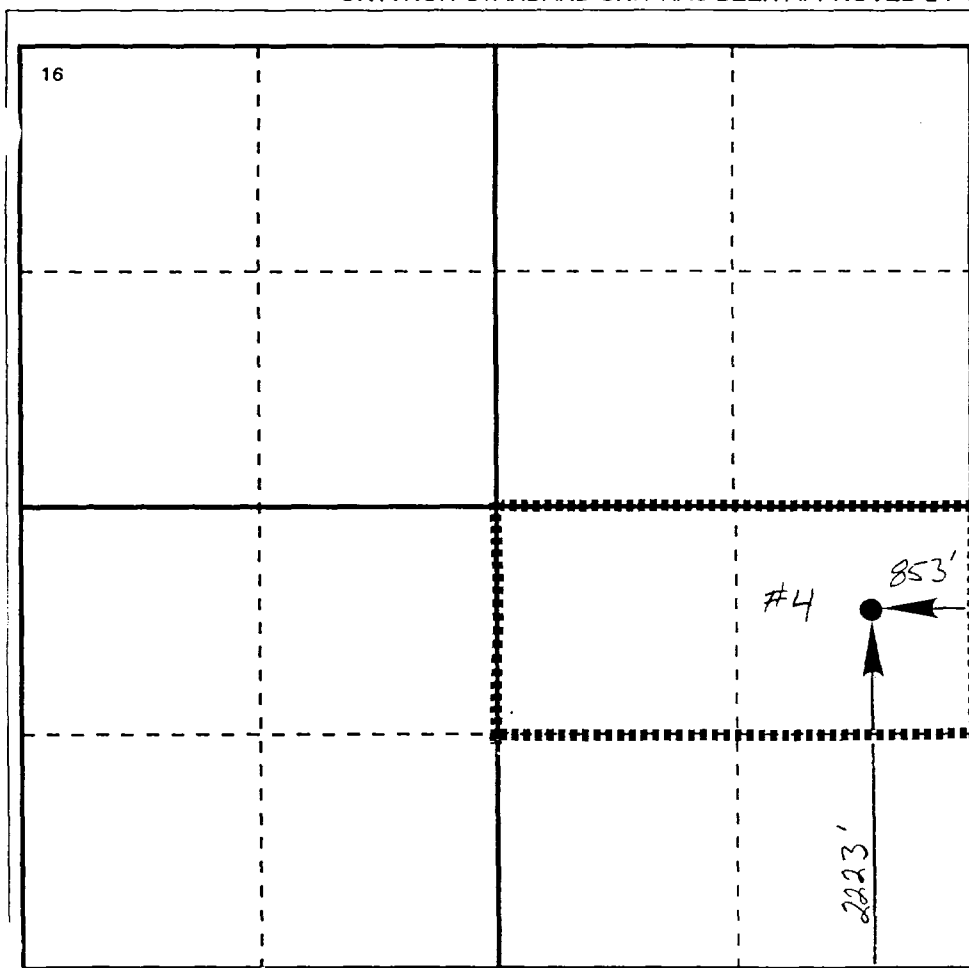
<sup>10</sup> Surface Location

Ul or lot no. I	Section 8	Township 20S	Range 37E	Lot.Idn	Feet From The 2223	North/South Line SOUTH	Feet From The 853	East/West Line EAST	County LEA
--------------------	--------------	-----------------	--------------	---------	-----------------------	---------------------------	----------------------	------------------------	---------------

<sup>11</sup> Bottom Hole Location If Different From Surface

Ul or lot no.	Section	Township	Range	Lot.Idn	Feet From The	North/South Line	Feet From The	East/West Line	County
---------------	---------	----------	-------	---------	---------------	------------------	---------------	----------------	--------

<sup>12</sup> Dedicated Acres 80	<sup>13</sup> Joint or Infill No	<sup>14</sup> Consolidation Code	<sup>15</sup> Order No.
-------------------------------------	-------------------------------------	----------------------------------	-------------------------

NO ALLOWABLE WILL BE ASSIGNED TO THIS COMPLETION UNTIL ALL INTERESTS HAVE BEEN CONSOLIDATED  
OR A NON-STANDARD UNIT HAS BEEN APPROVED BY THE DIVISION

## 17 OPERATOR CERTIFICATION

I hereby certify that the information  
contained herein is true and complete to the  
best of my knowledge and belief

Signature

Printed Name

Darrell J. Carriger

Position

Engineering Assistant

Date

7/25/94

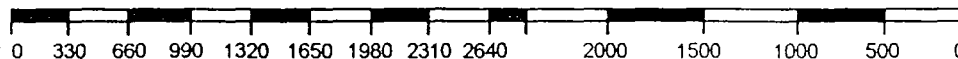
## 18 SURVEYOR CERTIFICATION

I hereby certify that the well location shown  
on this plat was plotted from field notes of  
actual surveys made by me or under my  
supervision, and that the same is true and  
correct to the best of my knowledge and  
belief.

Date Surveyed

Signature & Seal of  
Professional Surveyor

Certificate No.



All distances must be from the outer boundaries of the Section.

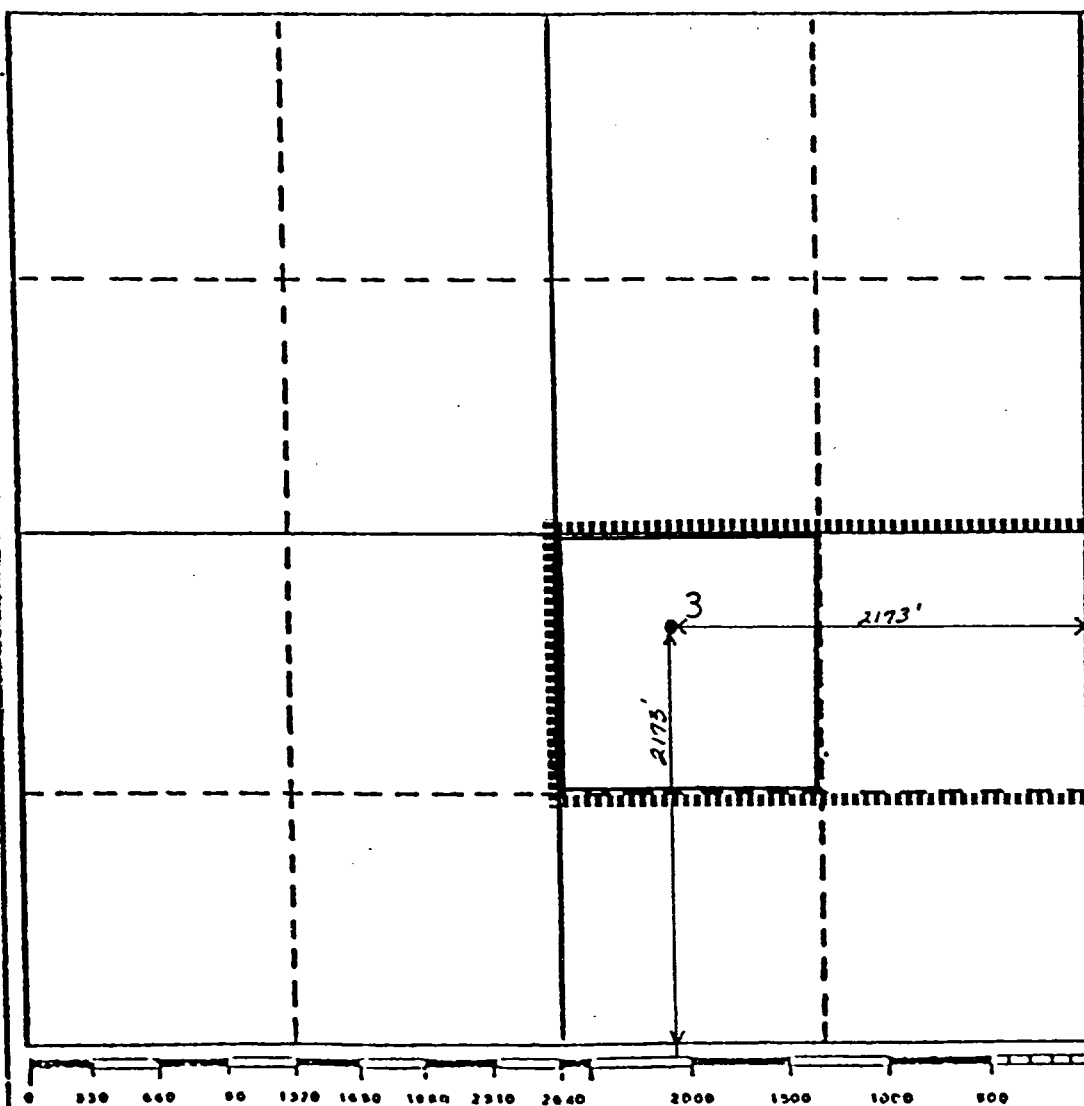
Operator <b>Texaco Producing Inc.</b>		Lease <b>T. Anderson</b>		Well No. <b>3</b>	
Unit Letter <b>J</b>	Section <b>8</b>	Township <b>20-S</b>	Range <b>37-E</b>	County <b>Lea</b>	
Actual Postage Location of Well:					
2173 feet from the South line and		2173 feet from the East line			
Ground Level Elev. <b>3546</b>	Producing Formation <b>Blinebry</b>		Pool <b>Monument Blinebry</b>		Dedicated Acreage: <b>40</b> Acre

1. Outline the acreage dedicated to the subject well by colored pencil or hatchure marks on the plat below.
2. If more than one lease is dedicated to the well, outline each and identify the ownership thereof (both as to working interest and royalty).
3. If more than one lease of different ownership is dedicated to the well, have the interests of all owners been consolidated by communitization, unitization, force-pooling, etc?

☐ Yes ☐ No If answer is "yes," type of consolidation \_\_\_\_\_

If answer is "no," list the owners and tract descriptions which have actually been consolidated. (Use reverse side of this form if necessary.) \_\_\_\_\_

No allowable will be assigned to the well until all interests have been consolidated (by communitization, unitization, forced-pooling, or otherwise) or until a non-standard unit, eliminating such interests, has been approved by the Division.



## CERTIFICATION

I hereby certify that the information contained herein is true and complete to the best of my knowledge and belief.

*L. J. Seeman*  
Name

L. J. Seeman

Position

Dist. Petr. Engr.

Company

Texaco Producing Inc.

Date

November 4, 1987

I hereby certify that the well location shown on this plat was plotted from field notes of actual surveys made by me under my supervision, and that the same is true and correct to the best of my knowledge and belief.

Date Surveyed

Registered Professional Engineer  
and/or Land Surveyor

Certificate No.