



SHELL OIL COMPANY

P. O. Box 1858
Roswell, New Mexico

January 8, 1964

Mr. A. L. Porter, Jr.
Secretary-Director
New Mexico Oil Conservation Commission
P. O. Box 871
Santa Fe, New Mexico

Dear Sir:

We are, by this letter and enclosed documents, making application for an exception to Rule 303(a) of the New Mexico Oil Conservation Commission's Rules and Regulations. We propose to commingle the Wolfcamp and Devonian Zones on the Buckley A Lease, Denton Field, Lea County, New Mexico. Both zones are marginal on this lease with no wells physically capable of making top allowable. Both the Devonian and Wolfcamp crudes are sweet and have an API Gravity range between 41° and 45°. No change in the actual commercial value of production is anticipated. Individual well production will be allocated by monthly well tests. The rod pumped wells will be tested through a three-phase metering separator and the hydraulically pumped wells through a separate treating system and into a stock tank.

In accordance with Rule 303(b), the following attachments accompany this application: (1) Plat of the lease, (2) Schematic of the proposed installation, (3) Tabulation of production data for past 60 days.

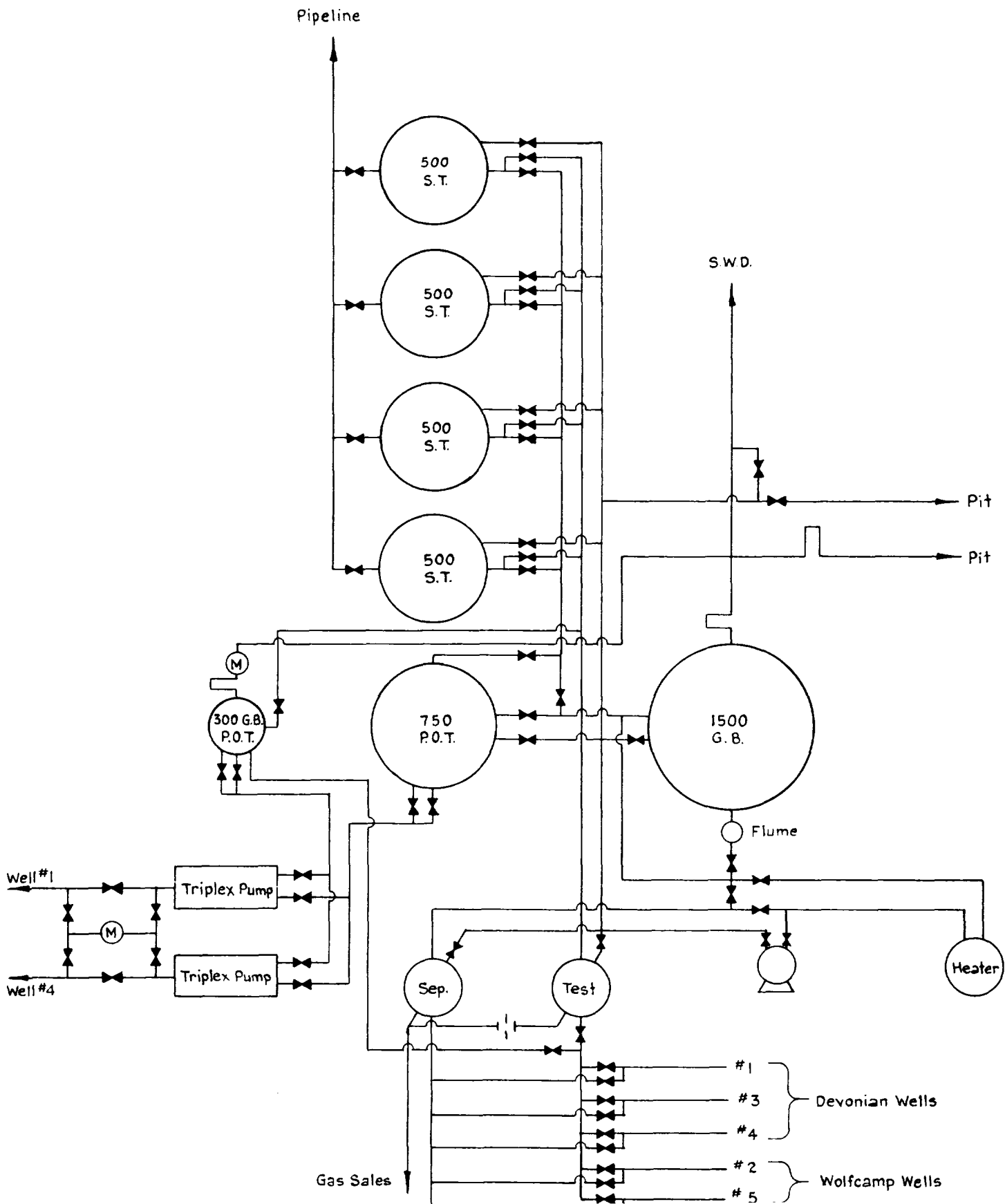
In view of the presented information, we request your approval of this project.

Yours very truly,

T. H. Dwyer
Division Production Manager

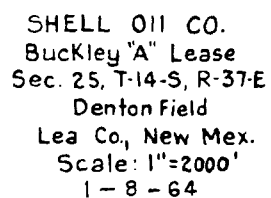
Attachments

SHELL OIL CO.
BUCKLEY "A" LEASE
DENTON FIELD
JAN. 8, 1964



BUCKLEY "A" LEASE
PRODUCTION DATA

<u>Well</u>	<u>Zone</u>	<u>October Production</u>	<u>October Top Allowable</u>	<u>November Production</u>	<u>November Top Allowable</u>
1	Devonian	2475	6882	2879	6660
3	Devonian	1089	6882	871	6660
4	Devonian	615	6882	258	6660
2	Wolfcamp	312	4588	301	4440
5	Wolfcamp	299	4588	0	4440



- Wolfcamp
- Devonian