



# SHELL OIL COMPANY

P. O. Box 1858  
Roswell, New Mexico

COMMUNICATIONS SECTION  
MAY 1 21

May 19, 1964

*Handwritten signature/initials*

Mr. A. L. Porter, Jr.  
Secretary-Director  
New Mexico Oil Conservation Commission  
P. O. Box 2086  
Santa Fe, New Mexico

Dear Sir:

We are, by this letter and enclosed documents, making application for an exception to Rule 303(a) of the New Mexico Oil Conservation Commission's Rules and Regulations. We propose to commingle the Wolfcamp and Devonian Zones on the Shelton Lease, Denton Field, Lea County, New Mexico. Both zones are marginal on this lease with no wells physically capable of making top allowable. Both the Devonian and Wolfcamp crudes are sweet and have an API Gravity range between 41° and 45°. No change in the actual commercial value of production is anticipated. Individual well production will be allocated by monthly well tests which will be conducted by producing the subject well through a three-phase metering separator.

In accordance with Rule 303(b), the following attachments accompany this application: (1) Plat of the lease, (2) Schematic of the proposed installation, (3) Tabulation of production, for the months of March and April.

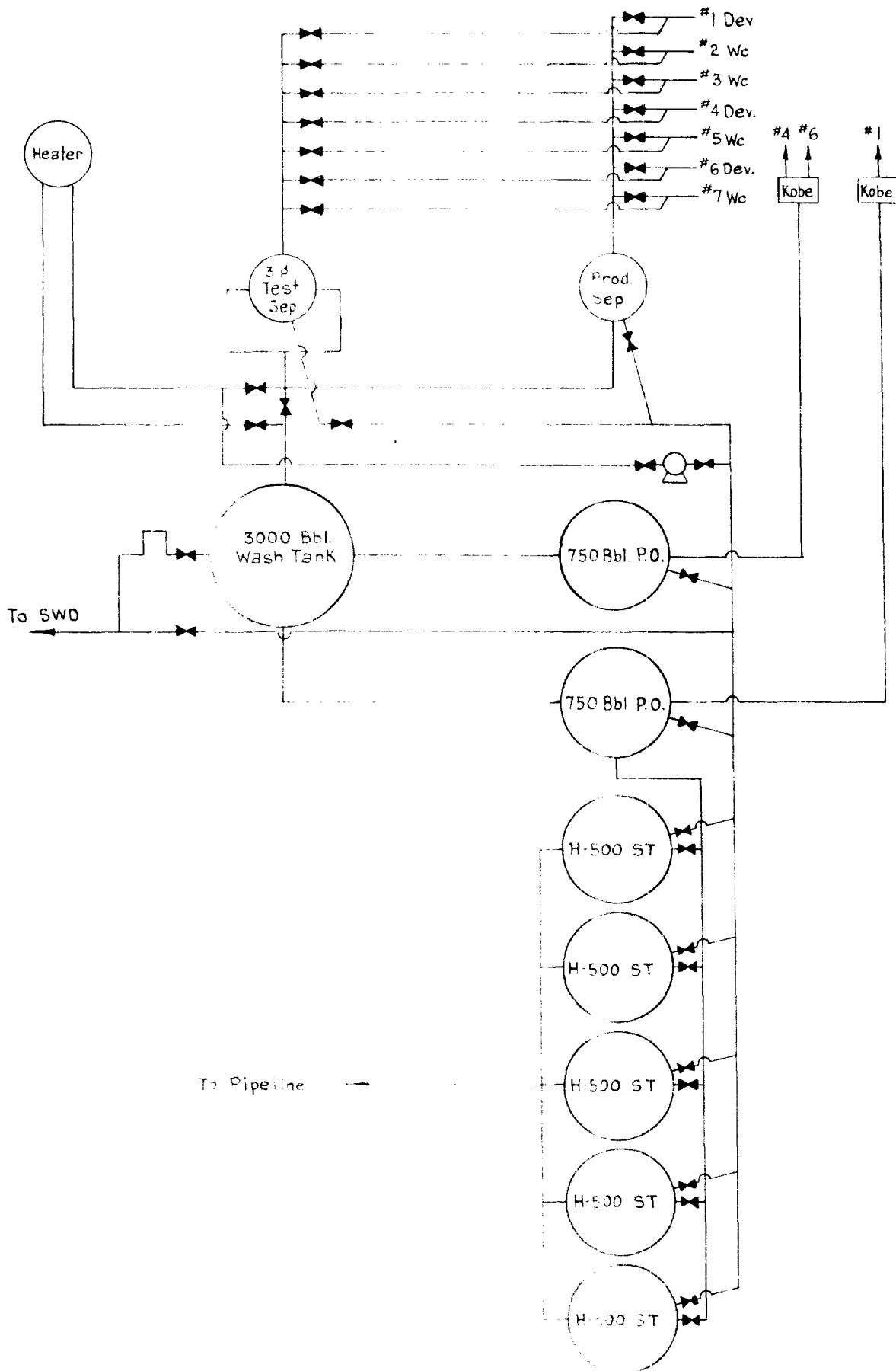
In view of the presented information, we request your approval of this project.

Yours very truly,

*Handwritten signature of T. H. Dwyer*  
T. H. Dwyer  
Division Production Manager

Attachments

SHELL OIL CO.  
 PROPOSED COMMINGLING  
 Shelton Lease  
 Denton Field  
 Lea Co., N Mex.



SHELTON LEASE  
DENTON FIELD

Well Number	Zone	March Production	March-Top Allowable	April Production	April-Top Allowable
1	Devonian	4904	6882	5317	6660
2	Wolfcamp	267	4588	334	4440
3	Wolfcamp	1255	4588	1048	4440
4	Devonian	2075	6882	2138	6660
5	Wolfcamp	1255	4588	1057	4440
6	Devonian	1765	6882	1831	6660
7	Wolfcamp	198	4588	201	4440