

August 12, 1964

Shell Oil Company  
P.O. Box 1858  
Roswell, New Mexico

Re: Request to Commingle  
Production from Glorieta  
and San Andres zones on  
State "H" Lease Sec.29,  
Twp.17S, Rge.35E, Lea County.

Gentlemen:

Since ownership is common throughout and since there will be no loss of royalty to the State through Commingling this office approves your above request. This of course is subject to approval by the Oil Conservation Commission.

The Commissioner of Public Lands reserves the right to amend or withdraw his decision should there be a loss of royalty to the State or should there be a great change in your metering system.

Yours very truly,

E. S. JOHNNY WALKER  
COMMISSIONER OF PUBLIC LANDS

BY:

ROMULO MARTINEZ  
OIL & GAS DIVISION

ESJW/RM/me

CC: Oil Conservation Commission  
Oil and Gas Accounting Commission

C  
O  
P  
Y



## SHELL OIL COMPANY

P. O. Box 1858  
Roswell, New Mexico  
August 10, 1964

1964 AUG 11 AM 7:36

*PC 223*

New Mexico Oil Conservation Commission  
P. O. Box 2088  
Santa Fe, New Mexico

Gentlemen:

We are, by this letter and enclosed documents, making application for an exception to Rule 303(a) of the New Mexico Oil Conservation Commission Rules and Regulations. We propose to commingle the Glorieta and San Andres on our State H Lease, Vacuum Field, Lea County, New Mexico.

Since the Glorieta well is top allowable, we plan to continuously meter and sample it, and to determine the San Andres production by subtraction. Since both zones are sour priced with a gravity range of 35° to 38°, we expect no change in revenue as a result of commingling.

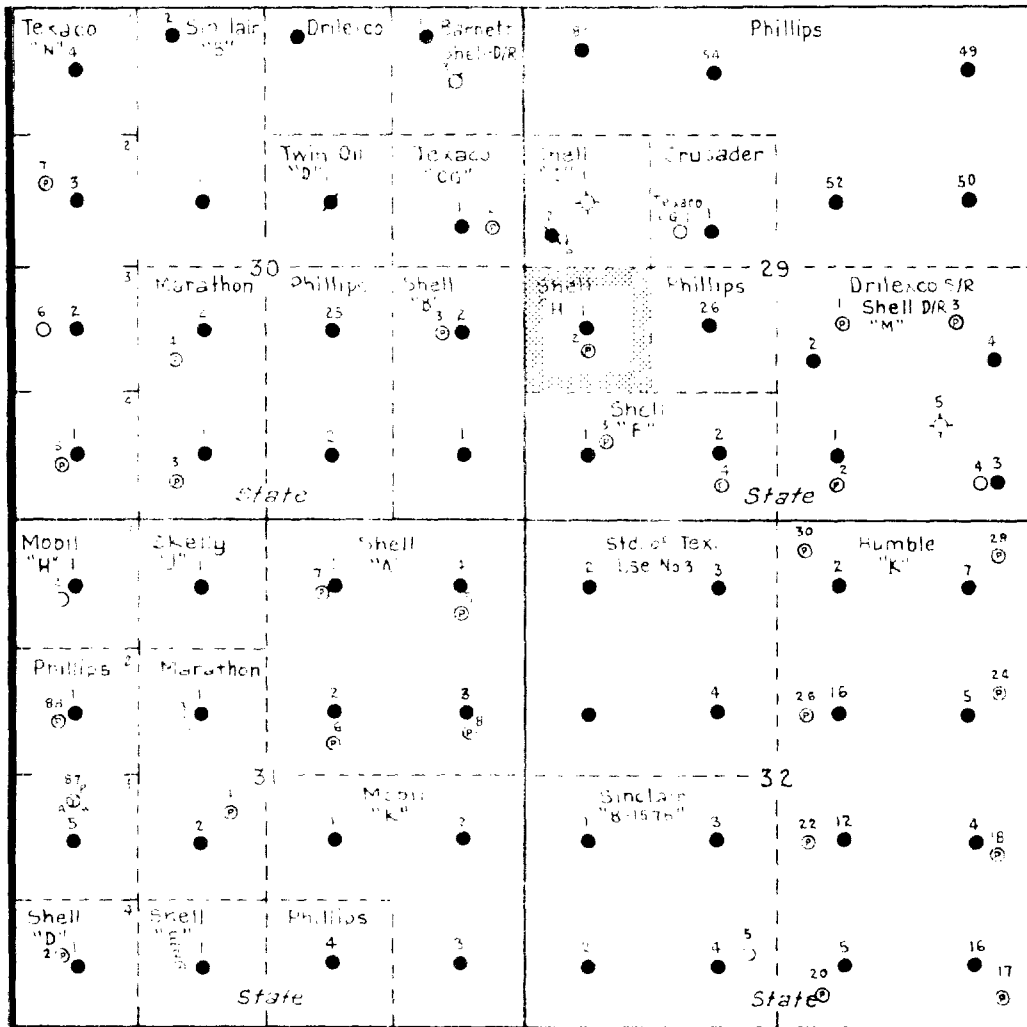
The following attachments accompany this application (1) Plat of the Lease (2) Schematic of the Proposed Installation (3) Copy of State Land Department's Approval.

In view of the above presented information, we respectfully request your approval of the project.

Yours very truly,

*T. H. Dwyer*  
T. H. Dwyer  
Division Production Manager

R-35-E



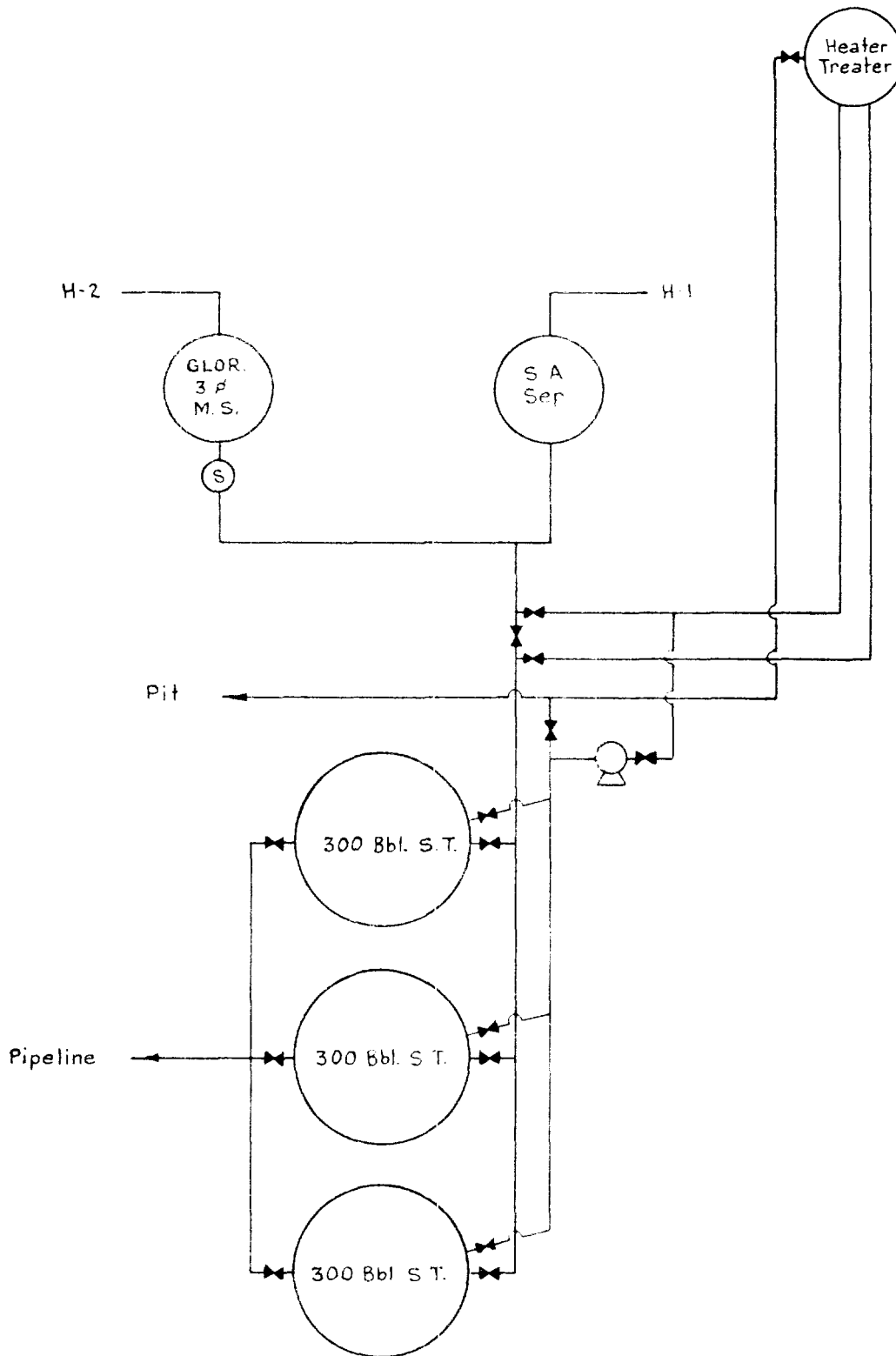
T  
17  
S

# LEGEND

- Grayburg San Andres
- ⊙ Paddock
- ⊗ Abo
- ⊕ Wolfcamp

SHELL OIL CO.  
OWNERSHIP MAP  
Scale: 1"=2000'

SHELL OIL CO  
SCHEMATIC DIAGRAM  
PROPOSED COMMINGLING  
STATE "H" LEASE  
VACUUM FIELD



CLASS OF SERVICE

This is a fast message unless its deferred character is indicated by the proper symbol.

# WESTERN UNION

## TELEGRAM

W. P. MARSHALL, PRESIDENT

SYMBOLS

DL=Day Letter

NL=Night Letter

LT=International Letter Telegram

1201 (4-60)

The filing time shown in the date line on domestic telegrams is LOCAL TIME at point of origin. Time of receipt is LOCAL TIME at point of destination

LA102 SSC144

T(01)。

L SNA149 COLLECT=SANTA FE NMEX 7 359P MST=

DICK VASSAR SHELL OIL CO=

234 AUG 7 14

ROSWELL NMEX=

THIS GRANTS PERMISSION TO COMMINGLE PRODUCTION ON STATE

"N" LEASE VACCUMFIELD AND STATE "H" LEASE LETTER FOLLOWS=

STATE LAND OFFICE ROMULO MARTINEZ==

"N" "H"=

THE COMPANY WILL APPRECIATE SUGGESTIONS FROM CUSTOMERS