



May 19, 1993

New Mexico Oil Conservation Division
P.O. Box 2088
Santa Fe, New Mexico 87504

Attn: Mr. William J. LeMay
Chairman and Director, Oil Conservation Division

RE: REQUEST TO AMEND SURFACE COMMINGLING ORDER PC-439
L. Van Etten Lease (FEE)
S/2 Sec. 9, T-20-S, R-37-E, Lea County, New Mexico

Gentlemen:

Texaco Exploration and Production Inc. requests permission to amend Surface Commingling Order PC-439. TEPI would like to add the Cass Penn pool to the list of pools authorized to commingle production on this lease. In late 1992, L. Van Etten #13 was drilled and completed in the Cass Penn Pool. The well's initial production of approximately 270 barrels per day placed it as a top allowable well. A new battery with a LACT was built for this well. The well and battery are located in Unit Letter K, Section 9, Township 20 South, Range 37 East. The current production on this well has fallen to approximately five barrels per day.

Due to this well's current low production, TEPI would like to reroute the production from four other L. Van Etten wells to this new battery. These wells are currently producing into the old L. Van Etten Battery located in Unit Letter I, Section 9, Township 20 South, Ranged 37 East. This battery is in poor condition and no longer meets OSHA specifications. Upon approval of this amendment, this old battery will be dismantled. The four wells and their current production are as follows:

<u>WELL</u>	<u>OIL</u>	<u>WATER</u>	<u>GAS</u>	<u>FORMATION</u>
L. Van Etten #1	0	13	383	Eumont Yates Seven Rvrs Qn
L. Van Etten #4	3	1	12	Eunice Monument Grayburg-SA
L. Van Etten #8	8	13	23	Weir Blinebry
L. Van Etten #12	15	23	16	Monument Tubb Weir Blinebry

Mr. William LeMay

-2-

May 19, 1993

The oil and gas transporters for this new battery are the same as for the old battery. The oil transporter is Shell Pipeline Corporation and the gas transporter is Warren Petroleum Corporation. Water is disposed into the Rice Engineering Disposal System.

Attached for your review is a plat showing the location the wells and the battery. Also attached is a schematic of the battery where monthly tests will be accurately measured on a per well basis through meters on a test separator. Each well will be tested several times during the month. Total monthly production will then be allocated to each well based on these well tests.

If you have any questions concerning this request, please contact me at 397-0418 or 393-7191. Thank you for your assistance in this matter.

Yours very truly,



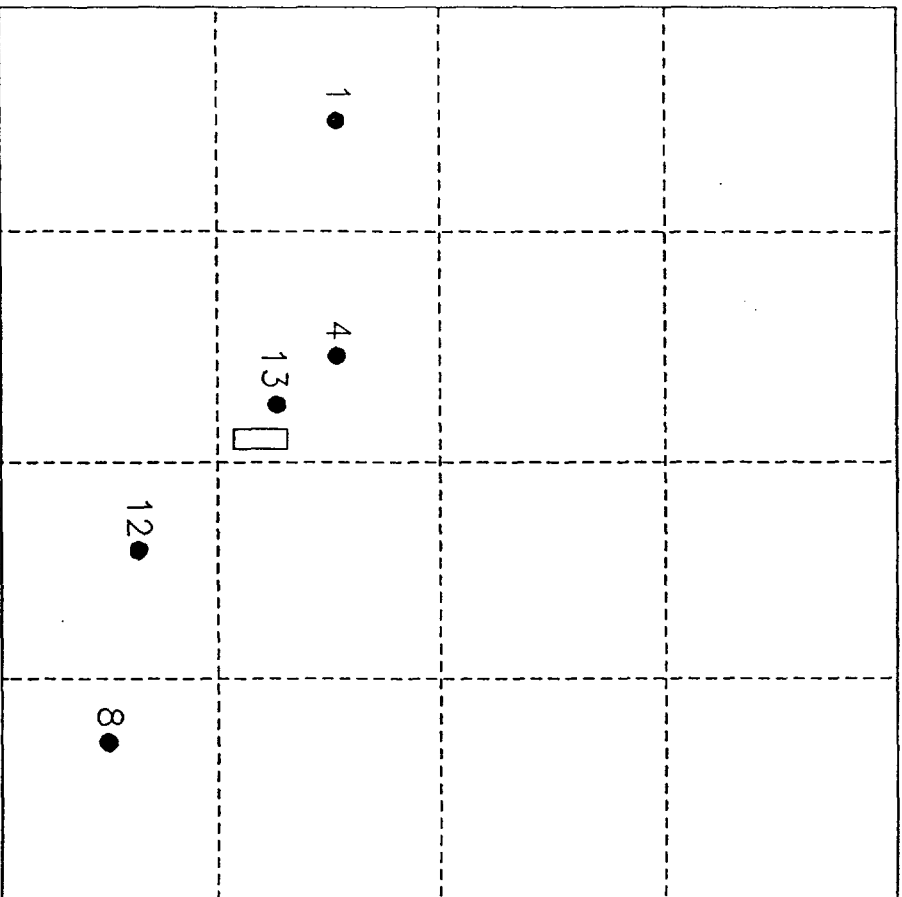
Monte C. Duncan
Engineer's Assistant

/mcd
Chrono
Attachments

cc: New Mexico Oil Conservation Division
P.O. Box 1980
Hobbs, New Mexico 88240
Attn: Mr. Jerry Sexton

Mr. Terry Frazier, Hobbs Area Manager
Texaco Exploration and Production Inc.

Mr. Odis Henley, Monument Subarea Supervisor
Texaco Exploration and Production Inc.




TEXACO EXPLORATION AND PRODUCTION INC.

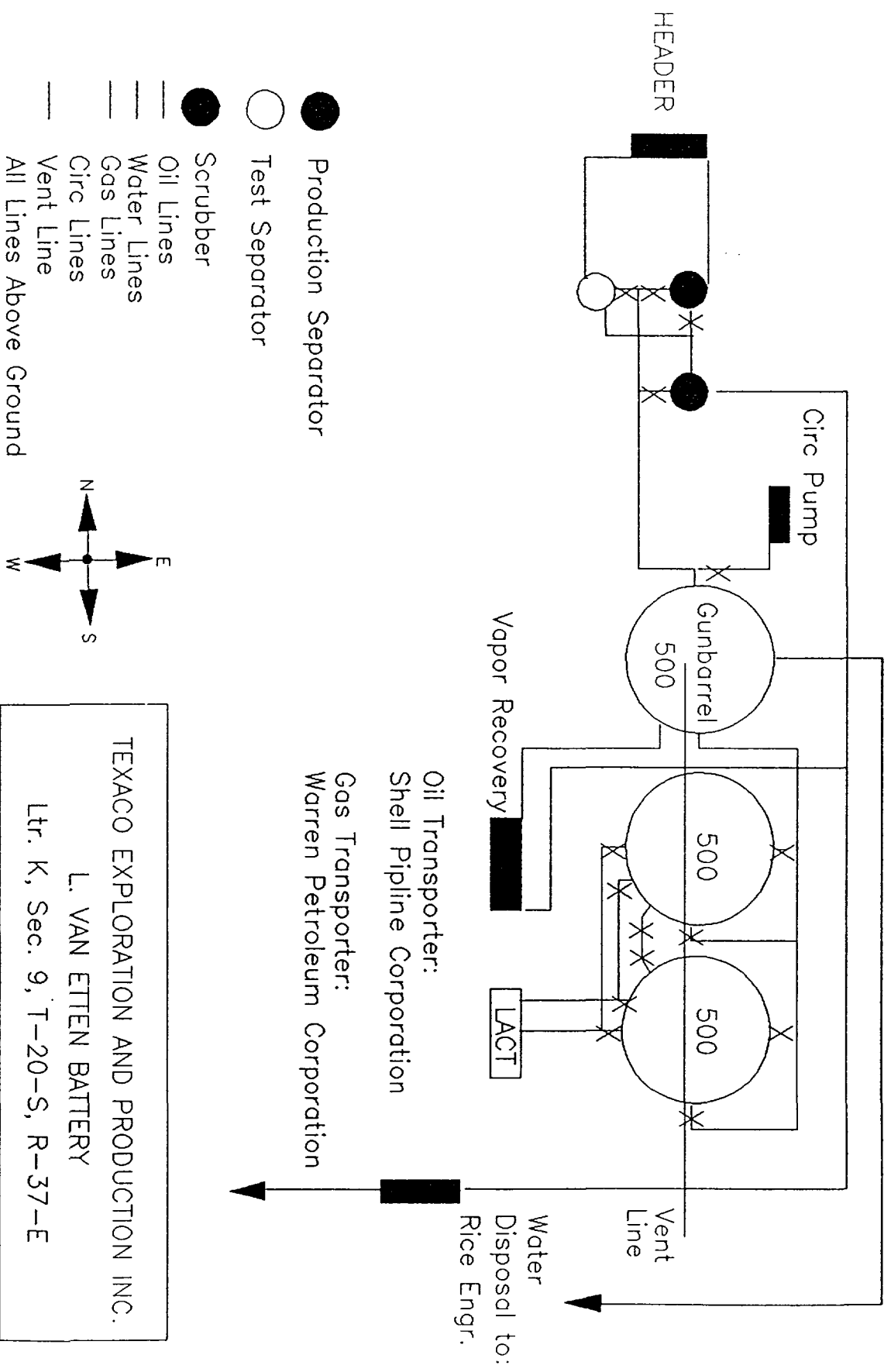
L VAN ETEN BATTERY

SEC 9, T-20-S, R-37-E

LEA COUNTY, NEW MEXICO

 BATTERY

 PRODUCING WELLS



not needed
for fee lease

COMMINGLE PRE-APPLICATION

STATE LAND OFFICE RULES 1.053-1.055 APPLY TO COMMINGLING OIL AND GAS PRODUCTION FROM NEW MEXICO STATE LANDS. PLEASE PROVIDE THE FOLLOWING INFORMATION SO THAT WE CAN DETERMINE WHETHER OR NOT A COMMINGLE APPLICATION PACKAGE SHOULD BE SUBMITTED.

1. BRIEFLY DESCRIBE WHAT YOU PROPOSE TO DO.

PLEASE SEE ATTACHED LETTER

2. FILL IN THE FOLLOWING INFORMATION FOR EACH WELL.

WELL NUMBER	LEGAL DESCRIPTION	LESSEE OF RECORD	N.M. LEASE NUMBER	FORMATION
L Van Etten #4	K 9 20S 37E	TEPI	FEE	Eunice Monument (G-SA)
L Van Etten #8	P 9 20S 37E	TEPI	FEE	Weir Blinebry
L Van Etten #12	O 9 20S 37E	TEPI	FEE	Monument Tubb Weir Blinebry
L Van Etten #13	K 9 20S 37E	TEPI	FEE	Cass Penn

NAME: Monte C. Duncan, Engineer's Assistant

COMPANY: Texaco Exploration and Production Inc., Box 730, Hobbs, N.M.

PHONE NUMBER: (505) 397-0418 or (505) 393-7191

IF YOU HAVE ANY QUESTIONS, PLEASE CONTACT THE OIL, GAS AND MINERALS DIVISION AT (505) 827-5744.

KKCS 06-04-91

Oil Conservation Division

July 18, 1995

Texaco Exploration & Production, Inc.
P.O. Box 730
Hobbs, New Mexico 88241-0730

Attention: Mr. Darrell J. Carriger

Re: Top Allowable Wells in the L. Van Etten Lease

Dear Mr. Carriger:

Reference is made to your recent notification to the Division that two new wells in the above captioned lease are currently producing at top allowable volumes. As production from the two wells is expected to decline in the future, the operator shall continue to monitor the volumes as determined by well tests approved in Division Order PC-439, for a period of six months. At that time, if production has not declined below top allowable, a determination shall be made as to the status of the authorizing Division Order and subsequently, continued commingling of production from the subject wells.

Sincerely,


William J. LeMay
Director

/BES

cc: Oil Conservation Division - Hobbs
File PC-439



RECEIVED

FEB 21 1996

OIL CONSERVATION DIVISION
SANTA FE

February 14, 1996

New Mexico Oil Conservation Division
2040 South Pacheco
Santa Fe, New Mexico 87505

Attn: Mr. William J. LeMay
Division Director

**Re: Notification of top allowable producers
Commingle Order PC-439
L. Van Etten Lease
S/2 of Section 9, Township 20S, Range 37E
Lea County, New Mexico**

Dear Mr. LeMay,

This letter is in response to a letter dated 7/18/95 issued from the Oil Conservation Division with regards to top allowable well performance on the subject lease. Texaco is currently producing four Weir Blinebry wells on the L. Van Etten lease at top allowable volumes. The L. Van Etten #15, and #16, have been top allowable producers for slightly over six months. In light of the success of the two newly drilled wells, Texaco recompleted the L. Van Etten wells #13, and #14 in the same area. The recompletions also produced at top allowable volumes. Due to the large volumes production, Texaco has placed an additional 3-phase test separator at the lease facility installation to measure Weir Blinebry production separately. Texaco believes that this facility modification is adequate to maintain accurate zonal performance measures while continuing to surface commingle production into a common storage facility.

Refer to the attached C-102 plats, and the facility installation diagram for additional information.

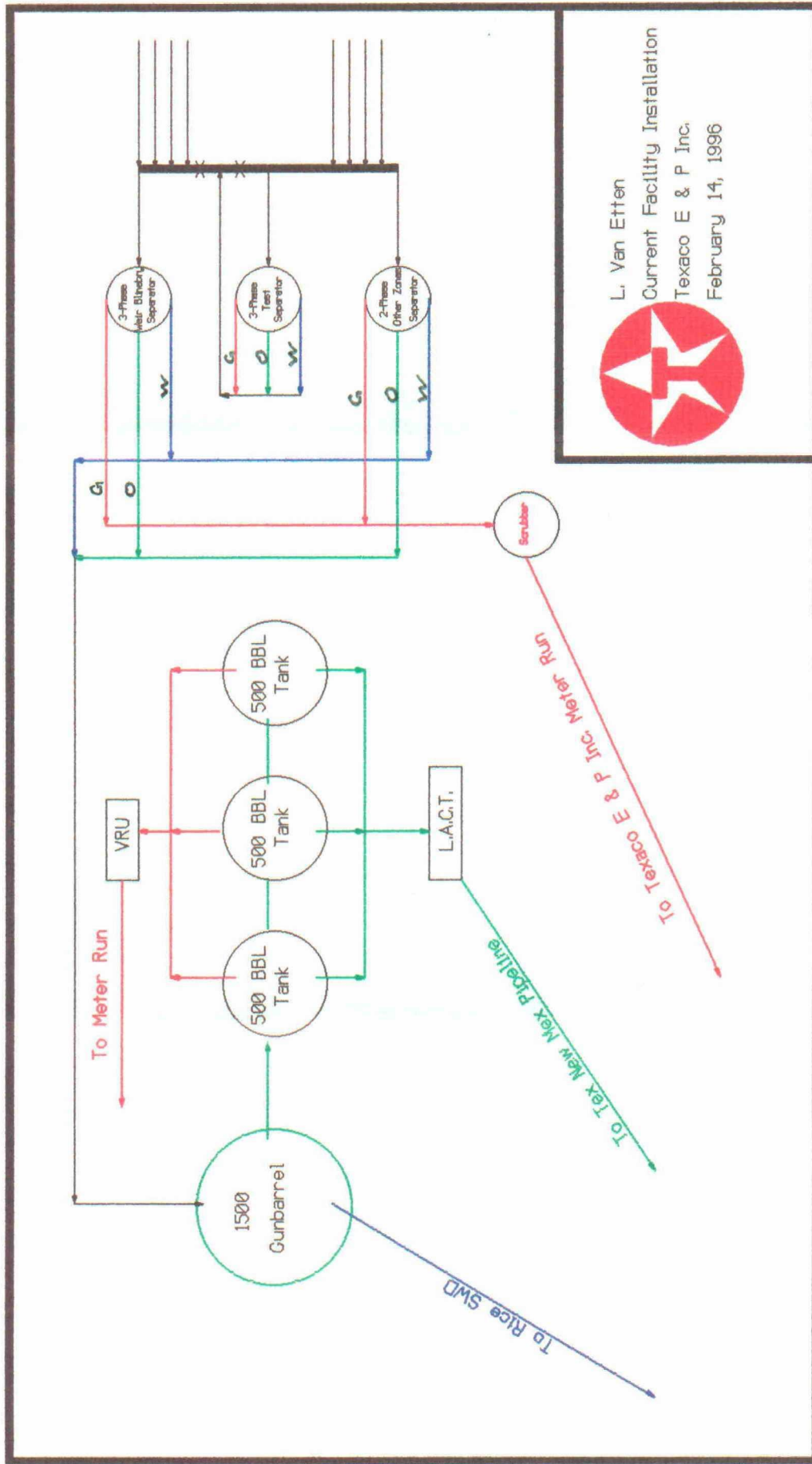
Please advise if additional facilities are deemed necessary by the commission. If you have any questions concerning this matter, please contact me at (505) 397-0426. Thank you for your attention to this matter.

Sincerely,

Darrell J. Carriger
Production Engineer
Texaco - Hobbs Operating Unit

/djc
Attachments

cc: Mr. Jerry Sexton (NMOCD District I Director)



L. Van Etten
Current Facility Installation
Texaco E & P Inc.
February 14, 1996

DISTRICT I
P. O. Box 1980, Hobbs, NM 88240

DISTRICT II
P. O. Drawer DD, Artesia, NM 88210

DISTRICT III
1000 Rio Brazos Rd., Aztec, NM 87410

DISTRICT IV
P. O. Box 2088, Santa Fe, NM 87504-2088

State of New Mexico
Energy, Minerals and Natural Resources Department

OIL CONSERVATION DIVISION

PO Box 2088
Santa Fe, NM 87504-2088

Form C-102
Revised February 10, 1994

Instructions on back

Submit to Appropriate District Office

State Lease-4 copies
Fee Lease-3 copies

☐ AMENDED REPORT

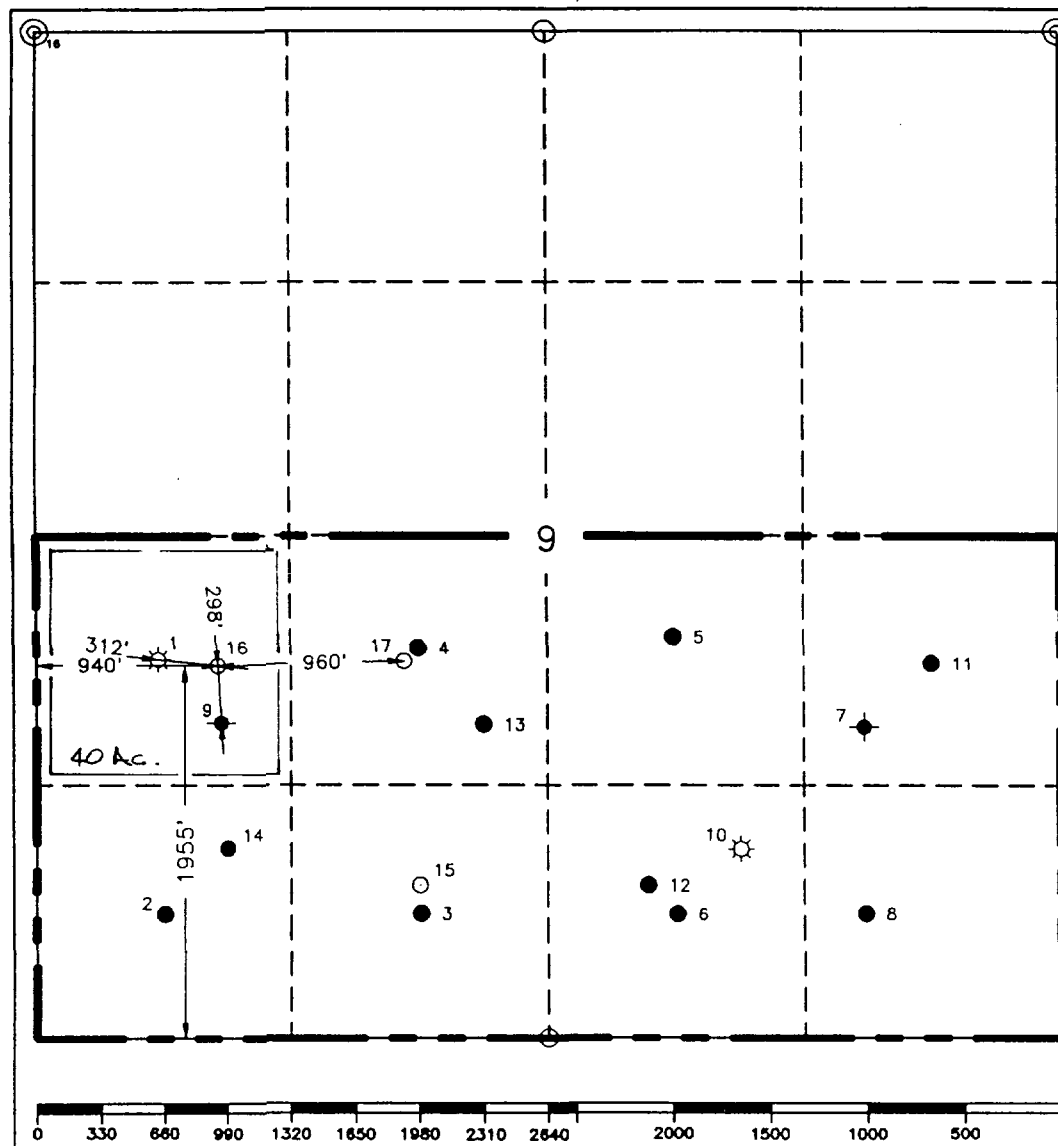
WELL LOCATION AND ACREAGE DEDICATION PLAT

¹ API Number		² Pool Code 63780		³ Pool Name Weir Blinebry	
⁴ Property Code 11127		⁵ Property Name L. Van Etten			⁶ Well Number 16
⁷ GRID No. 22351		⁸ Operator Name TEXACO EXPLORATION & PRODUCTION, INC.			⁹ Elevation 3547'

¹⁰ Surface Location									
UL or lot no. L	Section 9	Township 20-S	Range 37-E	Lot Idn	Feet from the 1955'	North/South line South	Feet from the 940'	East/West line West	⁷ County Lea

¹¹ Bottom Hole Location If Different From Surface									
UL or lot no.	Section	Township	Range	Lot Idn	Feet from the	North/South line	Feet from the	East/West line	⁷ County
¹² Dedicated Acres 40		¹³ Joint or Infill		¹⁴ Consolidation Code		¹⁵ Order No.			

NO ALLOWABLE WILL BE ASSIGNED TO THIS COMPLETION UNTIL ALL INTERESTS HAVE BEEN CONSOLIDATED
OR A NON-STANDARD UNIT HAS BEEN APPROVED BY THE DIVISION.



¹⁶ OPERATOR CERTIFICATION	
I hereby certify that the information contained herein is true and complete to the best of my knowledge and belief.	
Signature C. Wade Howard	
Printed Name C. Wade Howard	
Position Engineer's Assistant	
Company Texaco Expl. & Prod. Inc.	
Date March 9, 1995	
¹⁷ SURVEYOR CERTIFICATION	
I hereby certify that the well location shown on this plat was plotted from field notes of actual surveys made by me or under my supervision and that the same is true and correct to the best of my knowledge and belief.	
Date Surveyed March 3, 1995	
Signature & Seal of Professional Surveyor MAR 1995 Received Texaco Hobbs Area	
Certificate No. 7254 John S. Piper	
Sheet	

○ = Staked Location ● = Producing Well ● = Injection Well ✕ = Water Supply Well ◆ = Plugged & Abandon Well

DISTRICT I
P. O. Box 1980, Hobbs, NM 88240

DISTRICT II
P. O. Drawer DD, Artesia, NM 88210

DISTRICT III
1000 Rio Brazos Rd., Aztec, NM 87410

DISTRICT IV
P. O. Box 2088, Santa Fe, NM 87504-2088

State of New Mexico
Energy, Minerals and Natural Resources Department

OIL CONSERVATION DIVISION

PO Box 2088
Santa Fe, NM 87504-2088

Form C-102
Revised February 10, 1994

Instructions on back

Submit to Appropriate District Office

State Lease-4 copies
Fee Lease-3 copies

☐ AMENDED REPORT

WELL LOCATION AND ACREAGE DEDICATION PLAT

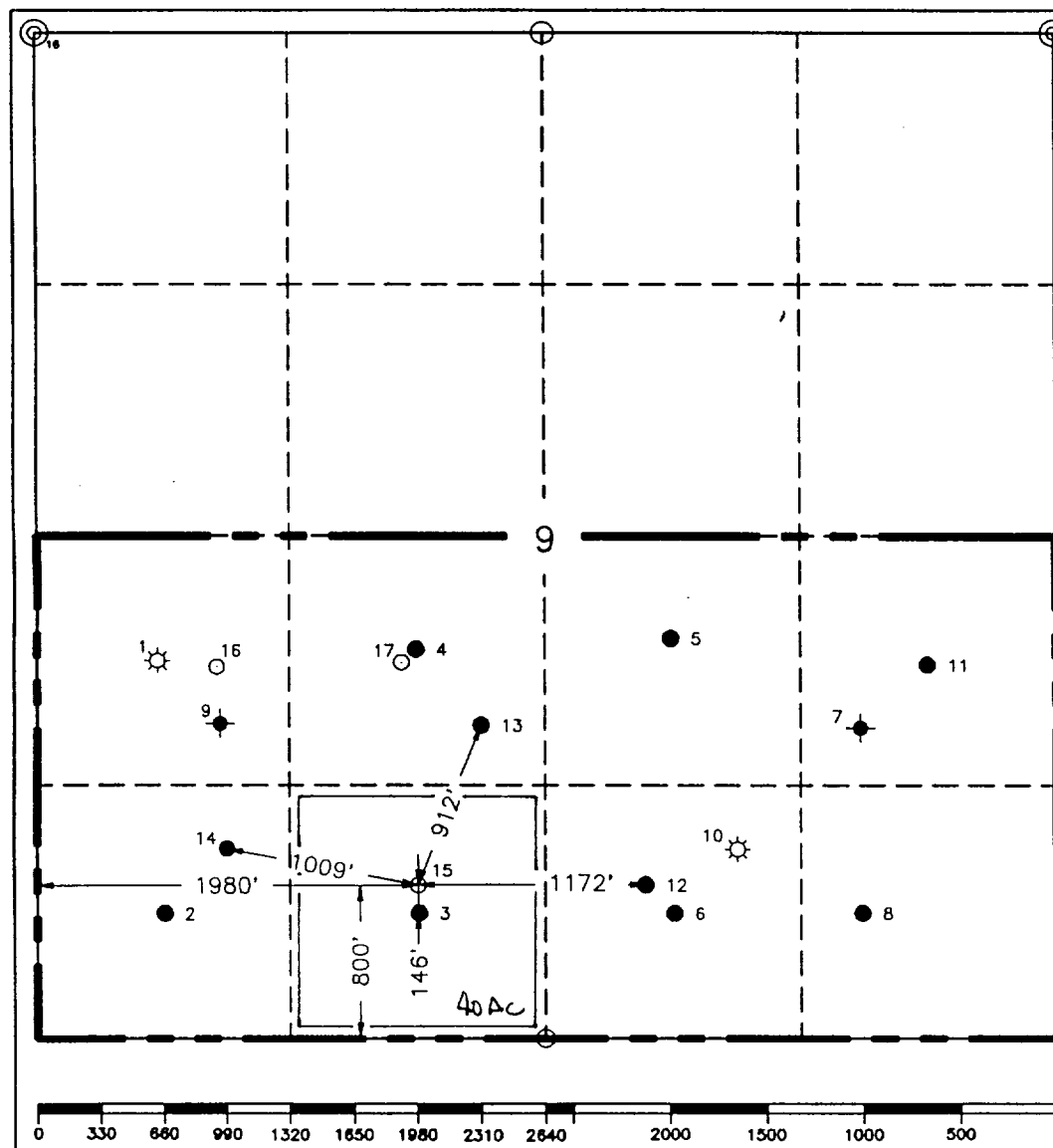
¹ API Number		² Pool Code 63780		³ Pool Name Weir Blinebry	
⁴ Property Code 11127		⁵ Property Name L. Van Etten			⁶ Well Number 15
⁷ OGRID No. 22351		⁸ Operator Name TEXACO EXPLORATION & PRODUCTION, INC.			⁹ Elevation 3535'

¹⁰ Surface Location									
UL or lot no. N	Section 9	Township 20-S	Range 37-E	Lot idn	Feet from the 800'	North/South line South	Feet from the 1980'	East/West line West	⁷ County Lea

¹¹ Bottom Hole Location If Different From Surface									
UL or lot no.	Section	Township	Range	Lot idn	Feet from the	North/South line	Feet from the	East/West line	⁷ County

¹² Dedicated Acres 40	¹³ Joint or Infill	¹⁴ Consolidation Code	¹⁵ Order No.
-------------------------------------	-------------------------------	----------------------------------	-------------------------

NO ALLOWABLE WILL BE ASSIGNED TO THIS COMPLETION UNTIL ALL INTERESTS HAVE BEEN CONSOLIDATED
OR A NON-STANDARD UNIT HAS BEEN APPROVED BY THE DIVISION.



¹⁰ OPERATOR CERTIFICATION

I hereby certify that the information contained herein is true and complete to the best of my knowledge and belief.

Signature

C. Wade Howard

Printed Name

C. Wade Howard

Position

Engineer's Assistant

Company

Texaco Expl. & Prod. Inc.

Date

March 9, 1995

¹⁶ SURVEYOR CERTIFICATION

I hereby certify that the well location shown on this plat was plotted from field notes of actual surveys made by me or under my supervision, and that the same is true and correct to the best of my knowledge and belief.

Date Surveyed

March 3, 1995

Signature & Seal of Professional Surveyor

Received
Texaco
Hobbs Area

Certificate No.

7284 John S. Piper

Sheet

○ = Staked Location ● = Producing Well ● = Injection Well ✕ = Water Supply Well ● = Plugged & Abandon Well

DISTRICT I
P.O. Box 1960, Hobbs, NM 88241-1980

DISTRICT II
P.O. Box Drawer DD, Artesia, NM 88211-0719

DISTRICT III
1000 Rio Brazos Rd., Aztec, NM 87410

DISTRICT IV
P.O. Box 2088, Santa Fe, NM 87504-2088

State of New Mexico
Energy, Minerals and Natural Resources Department

OIL CONSERVATION DIVISION

P.O. Box 2088
Santa Fe, New Mexico 87504-2088

Form C-102

Revised February 10, 1994

Instructions on back

Submit to Appropriate District Office

State Lease - 4 Copies

Fee Lease - 3 Copies

☐ AMENDED REPORT

WELL LOCATION AND ACREAGE DEDICATION PLAT

¹ API Number 30 025 31727	² Pool Code 63780	³ Pool Name Weir Blinebry
⁴ Property Code 11127	⁵ Property Name VAN ETEN, L.	⁶ Well No. 13
⁷ OGRID Number 022351	⁸ Operator Name TEXACO EXPLORATION & PRODUCTION INC.	⁹ Elevation 3541' GR

¹⁰ Surface Location

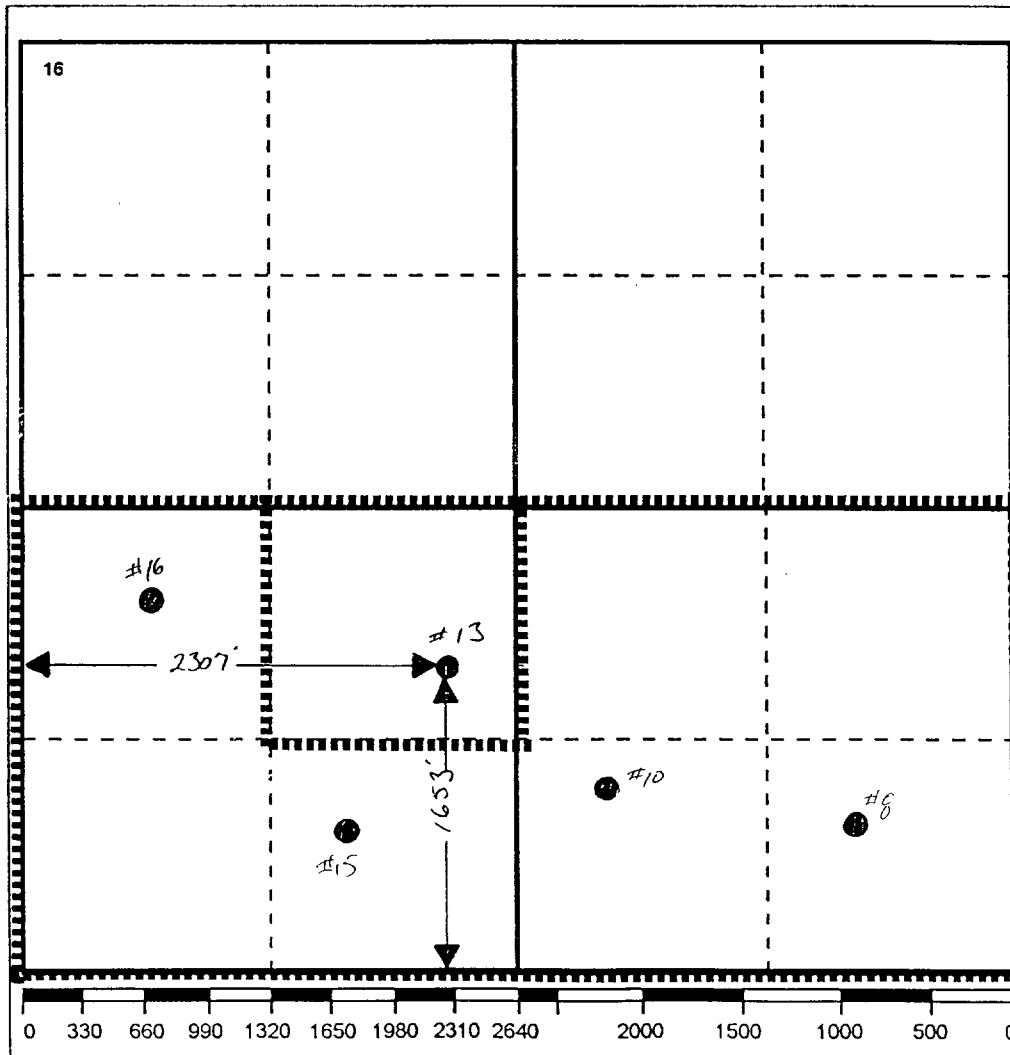
UI or lot no.	Section	Township	Range	Lot.Idn	Feet From The	North/South Line	Feet From The	East/West Line	County
K	9	20-S	37-E		1653	SOUTH	2307	WEST	LEA

¹¹ Bottom Hole Location If Different From Surface

UI or lot no.	Section	Township	Range	Lot.Idn	Feet From The	North/South Line	Feet From The	East/West Line	County
---------------	---------	----------	-------	---------	---------------	------------------	---------------	----------------	--------

¹² Dedicated Acres 40	¹³ Joint or Infill No	¹⁴ Consolidation Code	¹⁵ Order No.
-------------------------------------	-------------------------------------	----------------------------------	-------------------------

NO ALLOWABLE WILL BE ASSIGNED TO THIS COMPLETION UNTIL ALL INTERESTS HAVE BEEN CONSOLIDATED
OR A NON-STANDARD UNIT HAS BEEN APPROVED BY THE DIVISION



17 OPERATOR CERTIFICATION

I hereby certify that the information
contained herein is true and complete to the
best of my knowledge and belief

Signature

Printed Name

Darrell J. Carriger

Position

Engineering Assistant

Date

7/20/95

18 SURVEYOR CERTIFICATION

I hereby certify that the well location shown
on this plat was plotted from field notes of
actual surveys made by me or under my
supervision, and that the same is true and
correct to the best of my knowledge and
belief.

Date Surveyed

Signature & Seal of
Professional Surveyor

Certificate No:

JUL 1995
Received
Texaco
Hobbs Area

DISTRICT I
P.O. Box 1980, Hobbs, NM 88241-1980
DISTRICT II
P.O. Box Drawer DD, Artesia, NM 88211-0719
DISTRICT III
1000 Rio Brazos Rd., Aztec, NM 87410
DISTRICT IV
P.O. Box 2088, Santa Fe, NM 87504-2088

State of New Mexico
Energy, Minerals and Natural Resources Department

Form C-102
Revised February 10, 1994

OIL CONSERVATION DIVISION

P.O. Box 2088
Santa Fe, New Mexico 87504-2088

Instructions on back
Submit to Appropriate District Office
State Lease - 4 Copies
Fee Lease - 3 Copies

☐ AMENDED REPORT

WELL LOCATION AND ACREAGE DEDICATION PLAT

¹ API Number 30 025 32518	² Pool Code 63780	³ Pool Name Weir Blinebry
⁴ Property Code 11127	⁵ Property Name L VAN ETEN	⁶ Well No. 14
⁷ OGRID Number 022351	⁸ Operator Name TEXACO EXPLORATION & PRODUCTION INC.	⁹ Elevation 3514'

¹⁰ Surface Location

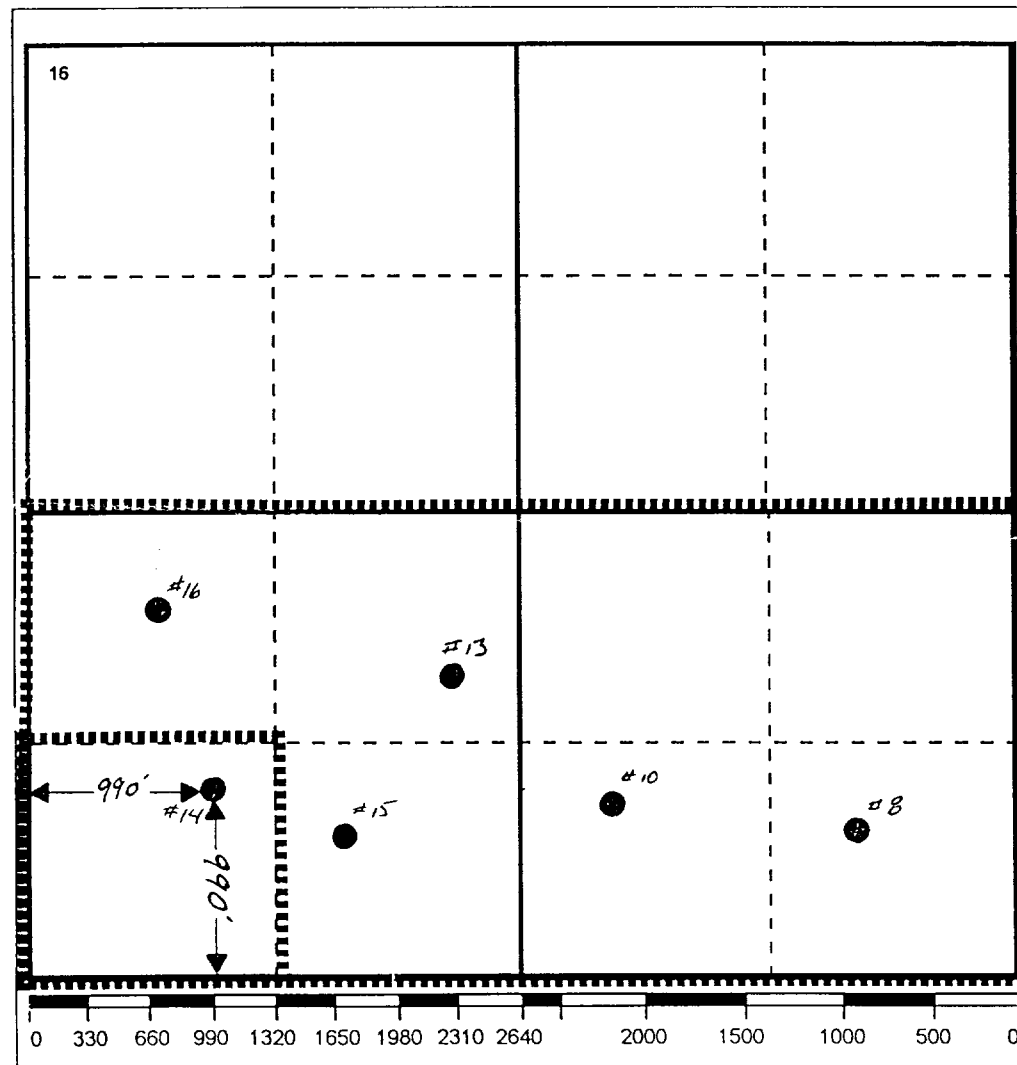
UI or lot no.	Section	Township	Range	Lot.Idn	Feet From The	North/South Line	Feet From The	East/West Line	County
M	9	20-S	37-E		990	SOUTH	990	WEST	LEA

¹¹ Bottom Hole Location If Different From Surface

UI or lot no.	Section	Township	Range	Lot.Idn	Feet From The	North/South Line	Feet From The	East/West Line	County
---------------	---------	----------	-------	---------	---------------	------------------	---------------	----------------	--------

¹² Dedicated Acres 40	¹³ Joint or Infill No	¹⁴ Consolidation Code	¹⁵ Order No.
-------------------------------------	-------------------------------------	----------------------------------	-------------------------

NO ALLOWABLE WILL BE ASSIGNED TO THIS COMPLETION UNTIL ALL INTERESTS HAVE BEEN CONSOLIDATED
OR A NON-STANDARD UNIT HAS BEEN APPROVED BY THE DIVISION



17 OPERATOR CERTIFICATION

I hereby certify that the information
contained herein is true and complete to the
best of my knowledge and belief

Signature

Printed Name

Darrell J. Carriger

Position

Engineering Assistant

Date

8/2/95

18 SURVEYOR CERTIFICATION

I hereby certify that the well location shown
on this plat was plotted from field notes of
actual surveys made by me or under my
supervision, and that the same is true and
correct to the best of my knowledge and
belief.

Date Surveyed

Signature & Seal of
Professional Surveyor

Certificate No.