



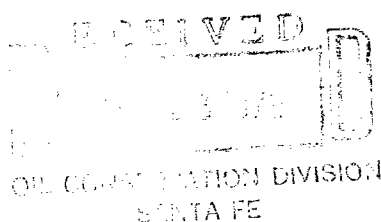
# SOHIO PETROLEUM COMPANY

Division of Sohio Natural Resources Company

MIDLAND, TEXAS 79702  
P. O. BOX 3000

August 8, 1979

New Mexico Oil Conservation Commission  
P. O. Box 2088  
Santa Fe, New Mexico 87501



Re: Exception to Rule 303-A  
Hinton Well #12, Unit K  
2310' FS&WL, Sec. 12, T22S,  
R37E, Lea County, New Mexico  
Hinton Well #13, Unit L  
2310' FSL, 990' FWL, Sec. 12,  
T22S, R37E, Lea County, New Mexico  
Hinton Well #7, Unit L  
2970' FNL, 330' FWL, Sec. 12,  
T22S, R37E, Lea County, New Mexico

Gentlemen:

The Hinton Well No. 12 is producing from Drinkard perforations at 6288-7012' and the Granite Wash formation is temporarily abandoned.

The Hinton Well No. 13 is producing from Drinkard perforations at 6245-6832' and Granite Wash perforations at 7167-7201'. Production is commingled downhole (Administrative Order No. DHC-257 dated Aug. 21, 1978).

The Hinton Well No. 7 was formerly in the Paddock (San Angelo) Unit, Well No. 82, and was released from the unit and returned to Sohio for re-completion in the San Andres formation. The well was plugged back to 5018' and is producing from perforations at 3909-3921'. Production from the San Andres will be measured by periodic well tests and the royalty interest is the same as the Drinkard and Granite Wash in the Hinton No. 12 and No. 13.

The gravity of the Drinkard oil is 40° with a value of \$26.50 per barrel. The gravity of the Granite Wash oil is 40° with a value of \$13.92 per barrel. The gravity of the San Andres oil is 32° with a value of \$13.76 per barrel. The actual commercial value of the commingled production would be the same as the sum of the values of the Drinkard, Granite Wash and San Andres due to the high percentage of higher gravity oil being produced.

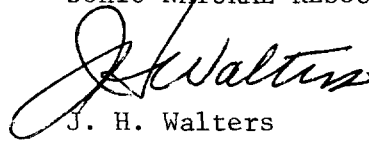
Attached is a schematic diagram of the Hinton No. 12, No. 13 and No. 7 wells, schematic diagram of the lease tank battery, and a plat showing all wells on the subject lease and the pool from which each well is producing.

August 8, 1979  
Page Two

We request an exception to Rule 303-A be granted to permit the commingling into common facilities of the commonly owned production from the Drinkard, Granite Wash and San Andres formations. Permission was granted to commingle Drinkard and Granite Wash production on Commingling Order PC-485 dated September 23, 1974.

Very truly yours,

SOHIO NATURAL RESOURCES COMPANY

A handwritten signature in dark ink, appearing to read "J. H. Walters", is written over the typed name.

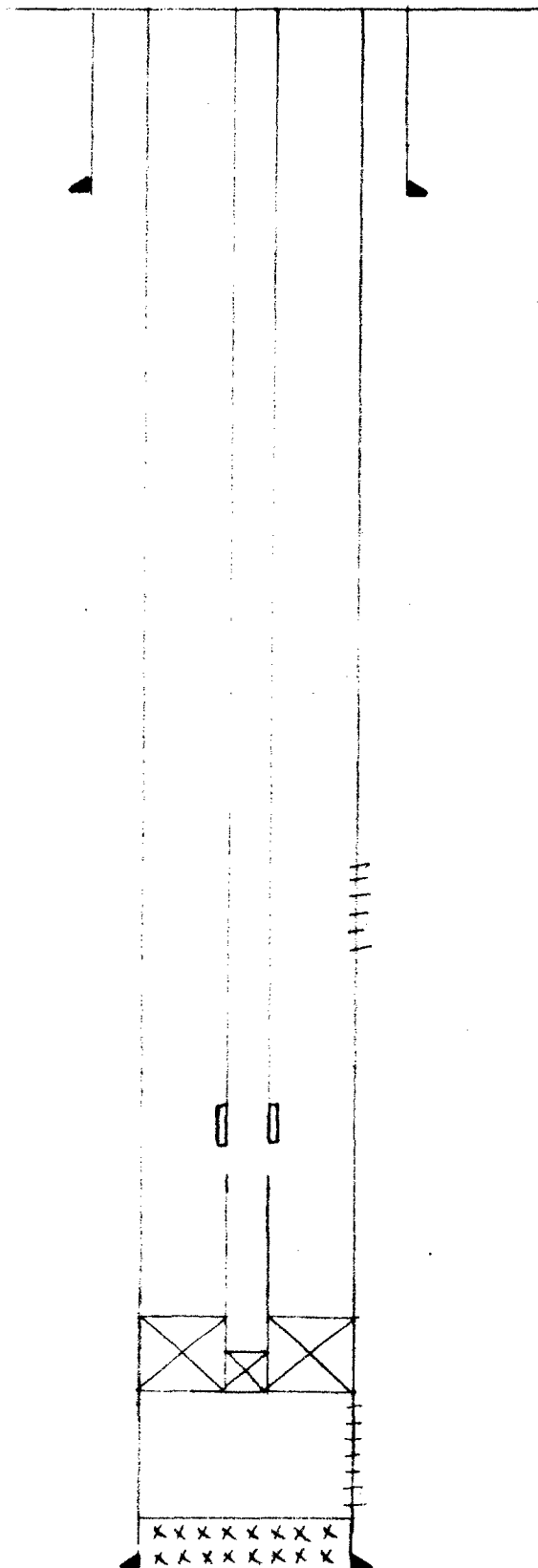
J. H. Walters  
District Superintendent  
Midland District

JHW/RC/rc

attachments

cc: NMOCC, Hobbs

HINTON WELL NO. 12



8-5/8" at 1240' cmtd w/130 sx

2-3/8" tubing to 7150'

Drinkard perfs 6288-7012'

Otis Sliding Sleeve at 7055'

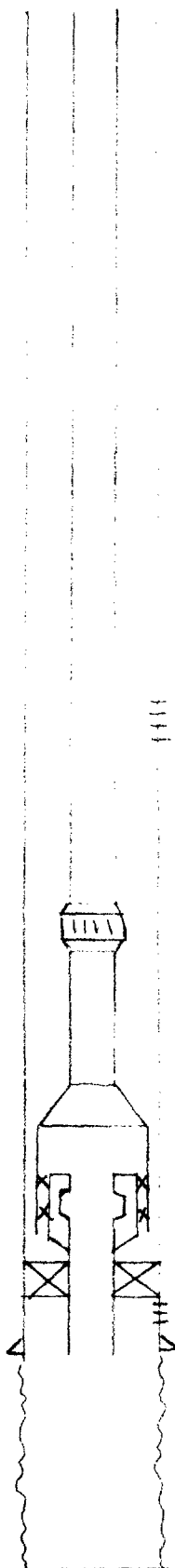
Baker Model D Packer  
and Blanking Plug at 7150'

Wantz Granite Wash perfs 7199-7299½'

PBTD 7315'

5½" casing at 7349' cmtd w/630 sx

HINTON WELL NO. 13



Drinkard perfs 6245-6832' (26 holes)

2-3/8" Otis "XO" Sleeve

1 jt 2-3/8" EUE tubing

5 1/2" X 2" Otis O.S.T.D. w/2" N Profile Nipple

Otis Perma Lach Packer

Wantz Granite Wash perfs 7167-7201'

5 1/2" 17#/ft casing set at 7286'

4-3/4" Open Hole 7286-8129'

HINTON WELL NO. 7

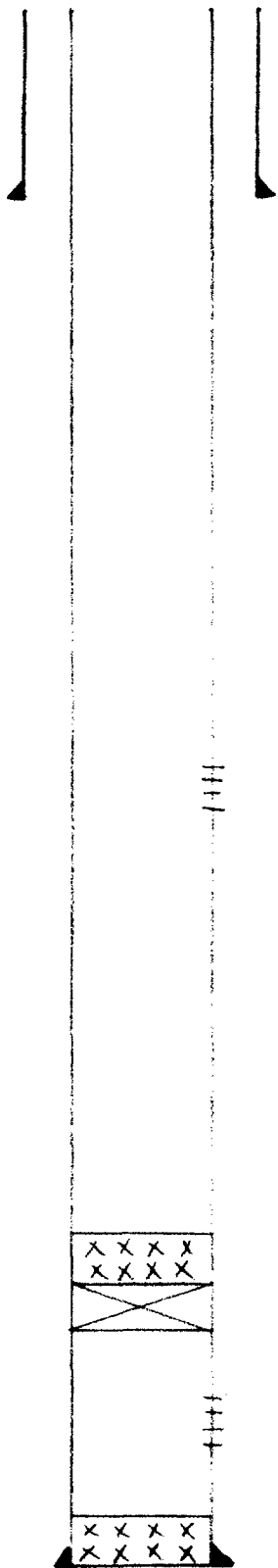
8-5/8" (32#) at 1152'

San Andres perfs 3909-3921'

CIBP at 5018'

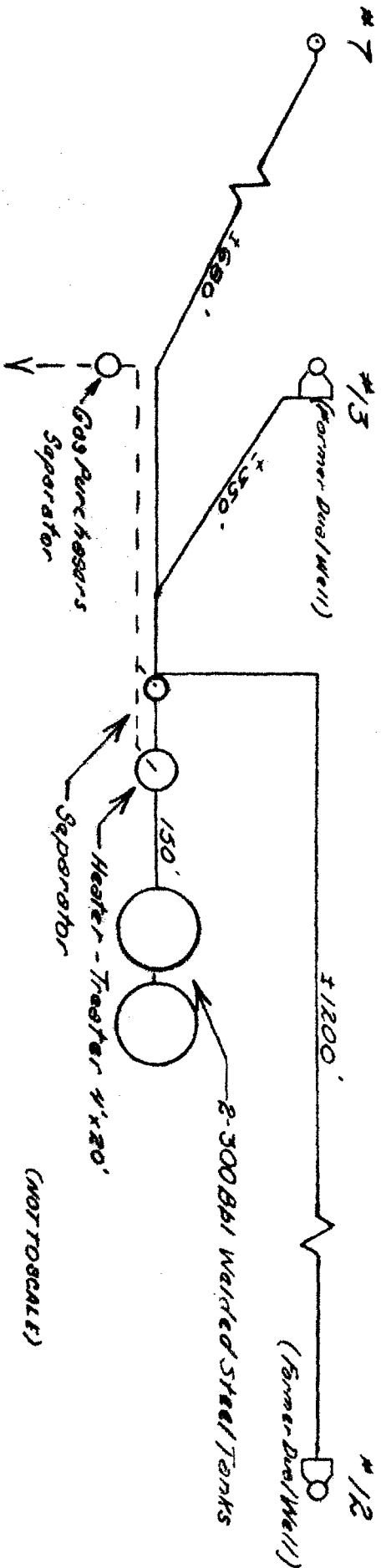
Paddock perfs 5060-5080'  
5140-5170'

5 1/2" at 5179' cmted w/600 sx



# SCHEMATIC DIAGRAM OF SURFACE INSTALLATION

HINTON #7, #12 & #13



Hinton #7

Unit Letter L, 2970' FNL,  
330' FNL, Sec. 12, T22S,  
R37E, Lea County, N.M.

Hinton #13

Unit Letter L, 2310' FSL,  
990' FNL, Sec. 12, T22S,  
R37E, Lea County, N.M.

Hinton #12

Unit Letter K, 2310' FSL,  
2310' FNL, Sec. 12, T22S,  
R37E, Lea County, N.M.



