

BASS ENTERPRISES PRODUCTION CO.

P. O. BOX 1178

MONAHANS, TEXAS 79756

January 30, 1975

New Mexico Oil Conservation Commission
Box 2088
Santa Fe, New Mexico 87501

Re: Application for Administrative
Approval to Commingle Bass
State Communitized #1

Gentlemen:

In accordance with Rule 303 (B) of the New Mexico Oil Conservation Commission Rules and Regulations, it is requested that administrative approval to given to surface commingle liquid hydrocarbons from two (2) common sources, namely the Burton Flat Strawn and Morrow condensates.

The following information is furnished:

1. Gravities: Strawn 58.2°; Morrow 55.2° estimated.
2. Value of Liquids: \$11.71/Bbl. based on recent letter bid.
3. Estimated volumes of liquid from each pool:
Strawn 200 Bbls/Day; Morrow 5 Bbls/Day
4. Expected gravity after commingling: 58.0°
5. Expected value after commingling: \$11.71/Bbl.
6. Actual commercial value of commingled production will be the same as prior to commingling.

If additional information is needed please advise.

Very truly yours,

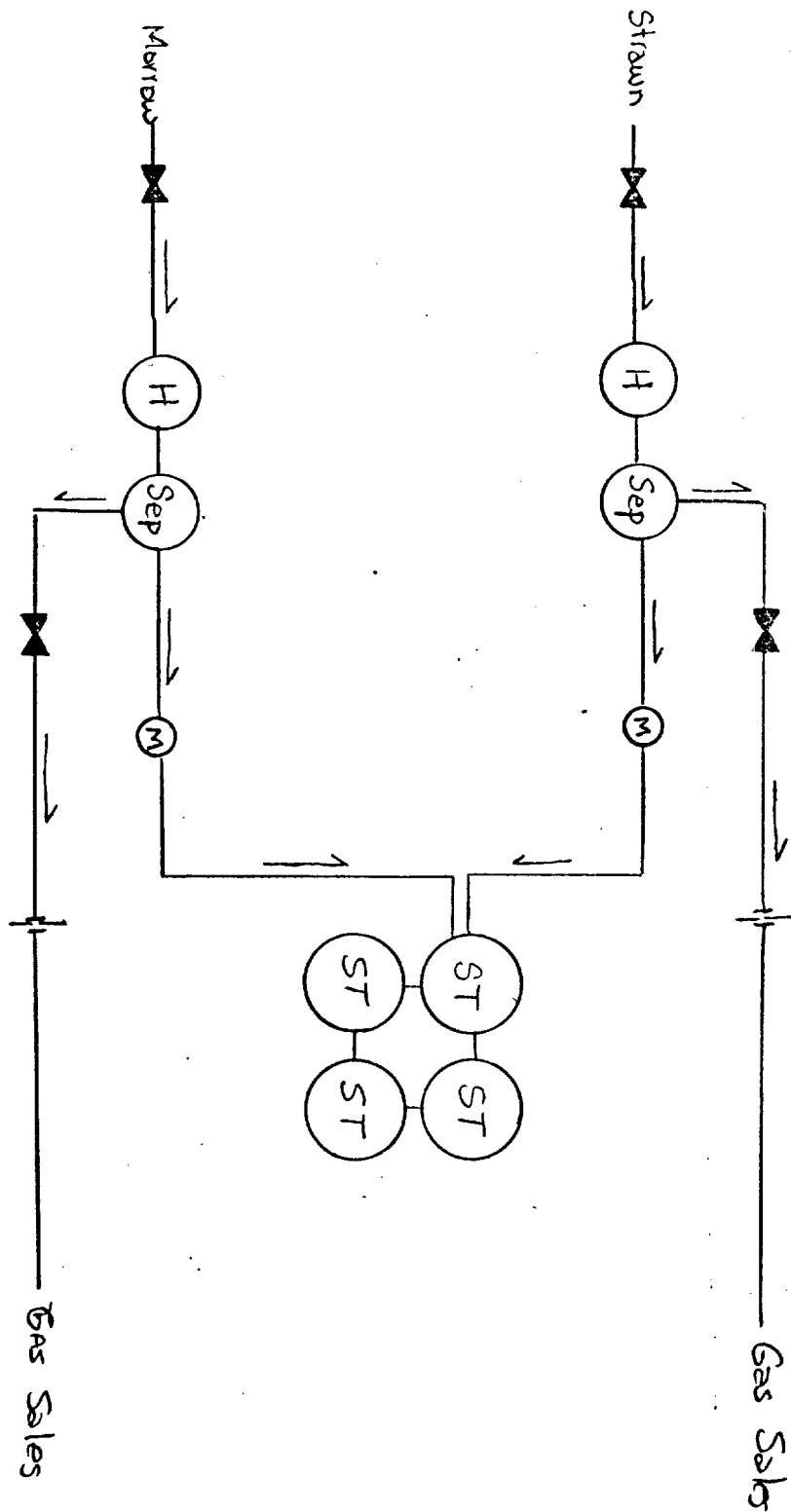
BASS ENTERPRISES PRODUCTION COMPANY FOR
PERRY R. BASS



George A. Teer
Staff Petroleum Engineer

GAT/jar

Attach: Diagram of Commingling Installation. Plats and Letter of Consent



Schematic diagram of proposed commingled installation. Perry R. Bass - Bass State Communitized No. 1, E, 15, 21S, 27E, Eddy County, New Mexico.

**NEW MEXICO OIL CONSERVATION COMMISSION
WELL LOCATION AND ACREAGE DEDICATION PLAT**

Form C-122
Supersedes C-12A
Effective 1-1-65

All distances must be from the outer boundaries of the Section

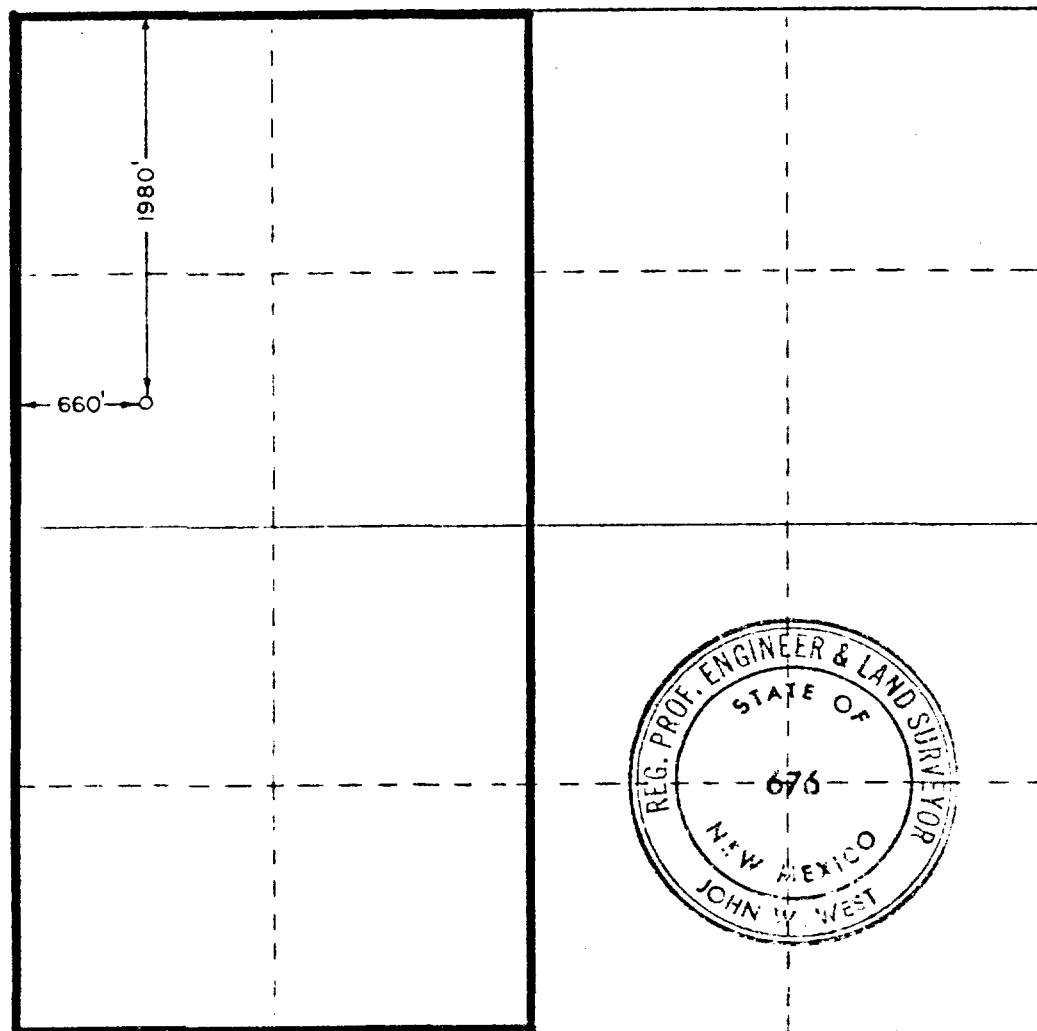
Operator PERRY R. BASS			Lease BASS STATE		Well No. 1
Tract Letter E	Section 15	Township 21 SOUTH	Range 27 EAST	County EDDY	
Actual Well Location of Wells: 1980 feet from the NORTH line and 660 feet from the WEST line					
Ground Level Elev. 3295.7	Producing Formation Strawn and Morrow gas		Pool Burton Flat		Dedicated Acreage: 320 Acres

1. Outline the acreage dedicated to the subject well by colored pencil or hatchure marks on the plat below.
2. If more than one lease is dedicated to the well, outline each and identify the ownership thereof (both as to working interest and royalty).
3. If more than one lease of different ownership is dedicated to the well, have the interests of all owners been consolidated by communitization, unitization, force-pooling, etc?

☒ Yes ☐ No If answer is "yes," type of consolidation **Forced Pooling Order #R-4751**

If answer is "no," list the owners and tract descriptions which have actually been consolidated. (Use reverse side of this form if necessary.) _____

No allowable will be assigned to the well until all interests have been consolidated (by communitization, unitization, forced-pooling, or otherwise) or until a non-standard unit, eliminating such interests, has been approved by the Commission.



CERTIFICATION

I hereby certify that the information contained herein is true and complete to the best of my knowledge and belief

George A. Teer

Name
George A. Teer
Position
Staff Petroleum Engineer

Company
Perry R. Bass

Date
January 28, 1975

I hereby certify that the well location shown on this plat was plotted from field notes of actual surveys made by me or under my supervision, and that the same is true and correct to the best of my knowledge and belief.

Date Surveyed
MARCH 27, 1974

Registered Professional Engineer and/or Land Surveyor

John W. West
Certificate No. **676**

0 330 660 990 1320 1650 1980 2310 2640 2970 3300 3630 3960 4290 4620 4950 5280 5610 5940 6270 6600

PERRY R. BASS, ~~XXX~~

P. O. BOX 1178

MONAHANS, TEXAS

February 3, 1975

New Mexico Oil Conservation Commission
Box 2088
Santa Fe, New Mexico 87501

Re: Consent to commingle from
Commissioner of Public Lands.

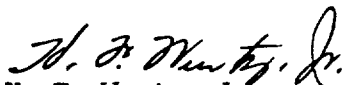
Gentlemen:

We are submitting an application to commingle, with attachments, with the exception of the Commissioner of Public Land's consent to commingle.

This request for consent has been made as evidenced by copy of letter dated January 27, 1975. Upon receipt of this consent we will furnish your office with the required number of copies.

Very truly yours,

PERRY R. BASS


H. F. Wurtz, Jr.
Division Production Clerk

hfw/s

PERRY R. BASS, ~~WIX~~

P. O. BOX 1178

MONAHANS, TEXAS

January 27, 1975

Commissioner of Public Lands
P. O. Box 1148
Santa Fe, New Mexico 87501

Dear Sir:

In accordance with State of New Mexico Oil Conservation Commission Rules and Regulations, Rule 303 (B), is is requested that we be given consent to commingle the condensate production, after metering, on our Bass State Communitized Well No. 1 located in Unit E, Section 15, T21S, R27E, Eddy County, New Mexico. This well to be dually completed in the Burton Flat Strawn and Morrow gas fields.

If further information is needed please notify.

Very truly yours,


Frank J. Millet

FJM/hfw

xc: Well File

PERRY R. BASS, ~~1000~~

P. O. BOX 1178

MONAHANS, TEXAS

February 6, 1975

Commissioner of Public Lands
P. O. Box 11148
Santa Fe, New Mexico 87501

Dear Sir:

In our previous letter of January 27, 1975 we requested your consent to commingle condensate production from our Bass State Communitized Well No. 1 located in Unit E, Section 15, T21S, R27E, Eddy County, New Mexico.

We propose to commingle the condensate production from two (2) zones in this one (1) well, after separate metering, into common storage. Only one lease and one well is involved in this request.

The per barrel value of the production from this well will be the same after commingling as it would be if not commingled.

Very truly yours,

George A. Teer

George A. Teer
Staff Petroleum Engineer

GAT/hfw

xc: File

RECEIVED
FEB 10 8 39 AM '75
STATE LAND OFFICE
SANTA FE, N. M.