

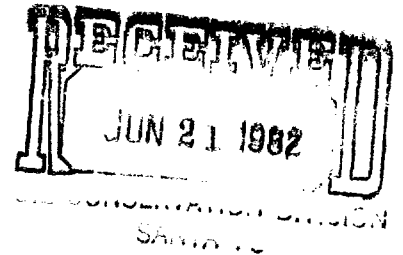


PHILLIPS PETROLEUM COMPANY

ODESSA, TEXAS 79762
4001 PENBROOK

EXPLORATION AND PRODUCTION GROUP

June 10, 1982



Exception Request--Statewide Rule
303-A, Commingling Between Reservoirs
C. D. Woolworth Lease

Oil Conservation Division
New Mexico Department of Energy
P. O. Box 2088
Santa Fe, New Mexico 87501

Attention: Mr. Joe D. Ramey, Director

Gentlemen:

We respectfully request an exception to Statewide Rule 303-A to allow surface commingling of liquid hydrocarbon production from wells on the C. D. Woolworth lease which are completed in the Jalmat-Gas, and Jalmat-Queen-7 Rivers-Oil field.

Production from all wells is marginal with allocation of production to each well to be based on periodic well tests. Well No. 18 is classified as gas and Nos. 7, 8, 14 and 17 are classified as oil. Support data as identified or attached are:

1. 60-day production tabulation for each well
2. Form C-116 reflecting current well status
3. Lease plat identifying each well
4. Schematic of lease and well production and test facilities
5. Liquid hydrocarbon gravity: oil - 28.5 ; condensate - 27.4
6. Expected commingled hydrocarbon gravity: 28
7. Commercial value of product is identical before and after commingling.
8. Ownership interests are identical in both pools.

Your early consideration and advice will be appreciated.

Very truly yours,

T. Harold McLemore
Regulation and Proration Supervisor

THM:mcf
Attachments

cc: Oil Conservation Division--Hobbs
Odessa C. Files
Houston C. Files

Phillips Petroleum Company

C. D. Woolworth Lease

Production Data

<u>Field Name</u>	<u>Well No.</u>		<u>Bbls Oil</u>	<u>Monthly Production</u> <u>MCF Gas</u>	<u>BW</u>
Jalmat-Queen, Yates-Seven Rivers - Oil					
	7	March, 1982	11	11	1760
		April, 1982	15	14	2560
	8	March, 1982	32	32	85
		April, 1982	47	43	125
	14	March, 1982	108	321	5508
		April, 1982	159	421	8109
	17	March, 1982	183	439	10334
		April, 1982	242	521	13666
Jalmat - Gas					
	18	March, 1982	0	0	0
		April, 1982	0	3785	0
		(Note: Well test dated 5-10-82, produced 2.8 BO, 79 Mcf gas, 77 BW)			

NEW MEXICO OIL CONSERVATION COMMISSION
GAS-OIL RATIO TESTS

C-116
Revised 1-1-83

May

Operator		Pool		County		Completion		Special						
Phillips Petroleum Company		Jalmat Yates 7-Rivers (Gas)		Lea										
Address		Rm 401, 4001 Penbrook, Odessa, Texas 79762		TYPE OF TEST - (X)		SCHEDULED [X]								
LEASE NAME	WELL NO.	LOCATION			DATE OF TEST	TYPE OF TEST	CHOKESIZE	TBG. PRESS.	DAILY ALLOWABLE	LENGTH OF TEST HOURS	PROD. DURING TEST			GAS - OIL RATIO CU. FT./BBL.
		U	S	T							R	WATER BBLs.	GRAV. OIL	
C. D. Woolworth	18	C	26	24	36	5-10-82	F			24	77	2.8	79	2872
C. D. Woolworth, Group 3	1	M	6	25	37	5-6-82	F			24	0	0	63	--
	2	H	6	25	37	5-6-82	F			24	0	0	54	--
M. C. Woolworth	4	J	33	24	37	5-6-82	F			24	0	0	103	--
Vernon	1	J	36	24	36	5-19-82	P			24	8	0	43	--

OIL CONSERVATION DIVISION
SANTA FE
JUN 2 1982

I hereby certify that the above information is true and complete to the best of my knowledge and belief.

(Signature)
W. J. Muell
Senior Engineering Specialist
(Title)

No well will be assigned an allowable greater than the amount of oil produced on the official test.

During gas-oil ratio test, each well shall be produced at a rate not exceeding the top unit allowable for the pool in which well is located by more than 25 percent. Operator is encouraged to take advantage of this 25 percent tolerance in order that well can be assigned increased allowables when authorized by the Commission.

Gas volumes must be reported in MCF measured at a pressure base of 15,025 psia and a temperature of 60° F. Specific gravity base will be 0.60.

Report casing pressure in lieu of tubing pressure for any well producing through casing.

Mail original and one copy of this report to the district office of the New Mexico Oil Conservation Commission in accordance with Rule 301 and appropriate pool rules.

June 2, 1982
(Date)

NEW MEXICO OIL CONSERVATION COMMISSION
GAS-OIL RATIO TESTS

C-116
Revised 1-1-65

May

CORRECTED COPY
County

Operator: Phillips Petroleum Company
Address: 4001 Penbrook, Odessa, Texas 79762
Well: Jalmat Yates Seven Rivers (oil)
Lea

LEASE NAME	WELL NO.	LOCATION			DATE OF TEST	TYPE OF TEST - (X)	CHOKED SIZE	TRG. PRESS.	DAILY ALLOWABLE	DEPTH OF TEST MOUNT	PROD. DURING TEST			GAS M.C.F.	GAS - OIL RATIO CU.F.T/DRI
		U	S	T							R	WATER BRLS.	GRAV. OIL		
C. D. Woolworth	7	N	23	24	36	5-6-82	P	1	24	1320	29.5	1.37	4	2759	
C. D. Woolworth	8	O	22	24	36	5-6-82	P	3	24	22	29.6	1.38	1	725	
C. D. Woolworth	14	L	26	24	36	5-6-82	P	10	24	412	27.4	5.5	23	4123	
C. D. Woolworth	17	K	23	24	36	5-6-82	P	17	24	1175	27.4	8.25	23	2749	

Completed Special

I hereby certify that the above information is true and complete to the best of my knowledge and belief.

W. J. Mueller
W. J. Mueller
(Signature)

Sr. Engineering Specialist
(Title)

June 8, 1982
(Date)

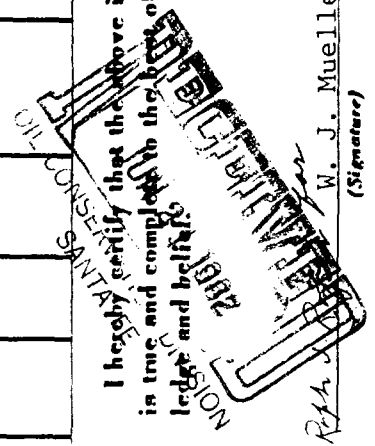
No well will be assigned an allowable greater than the amount of oil produced on the official test.

During gas-oil ratio test, each well shall be produced at a rate not exceeding the top unit allowable for the pool in which well is located by more than 25 percent. Operator is encouraged to take advantage of this 25 percent tolerance in order that well can be assigned increased allowables when authorized by the Commission.

Gas volumes must be reported in MCF measured at a pressure base of 15.025 psia and a temperature of 60° F. Specific gravity base will be 0.60.

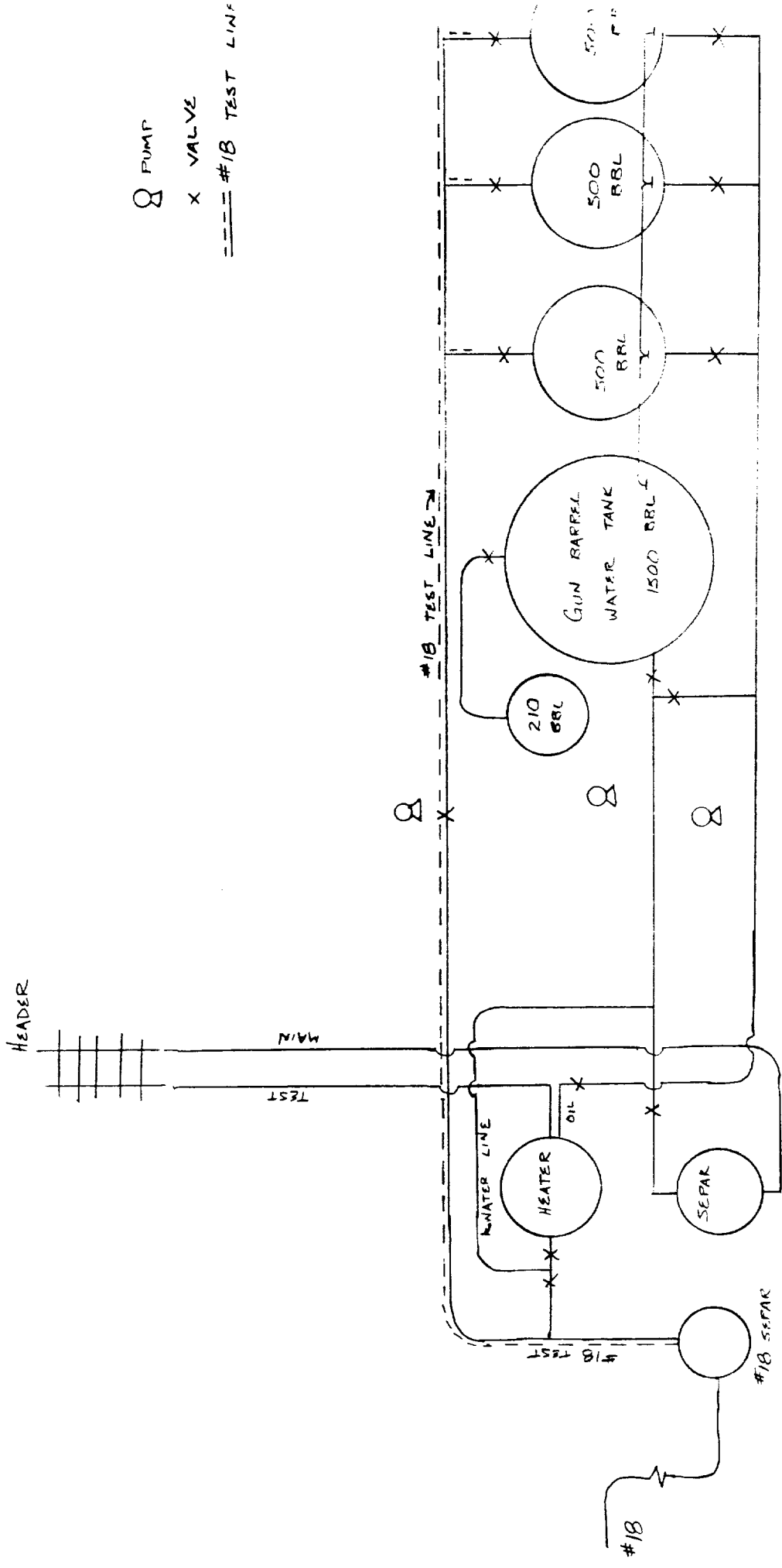
Report casing pressure in lieu of tubing pressure for any well producing through casing.

Mail original and one copy of this report to the district office of the New Mexico Oil Conservation Commission in accordance with Rule 301 and appropriate pool rules.



C.D. WOOLWORTH LEASE

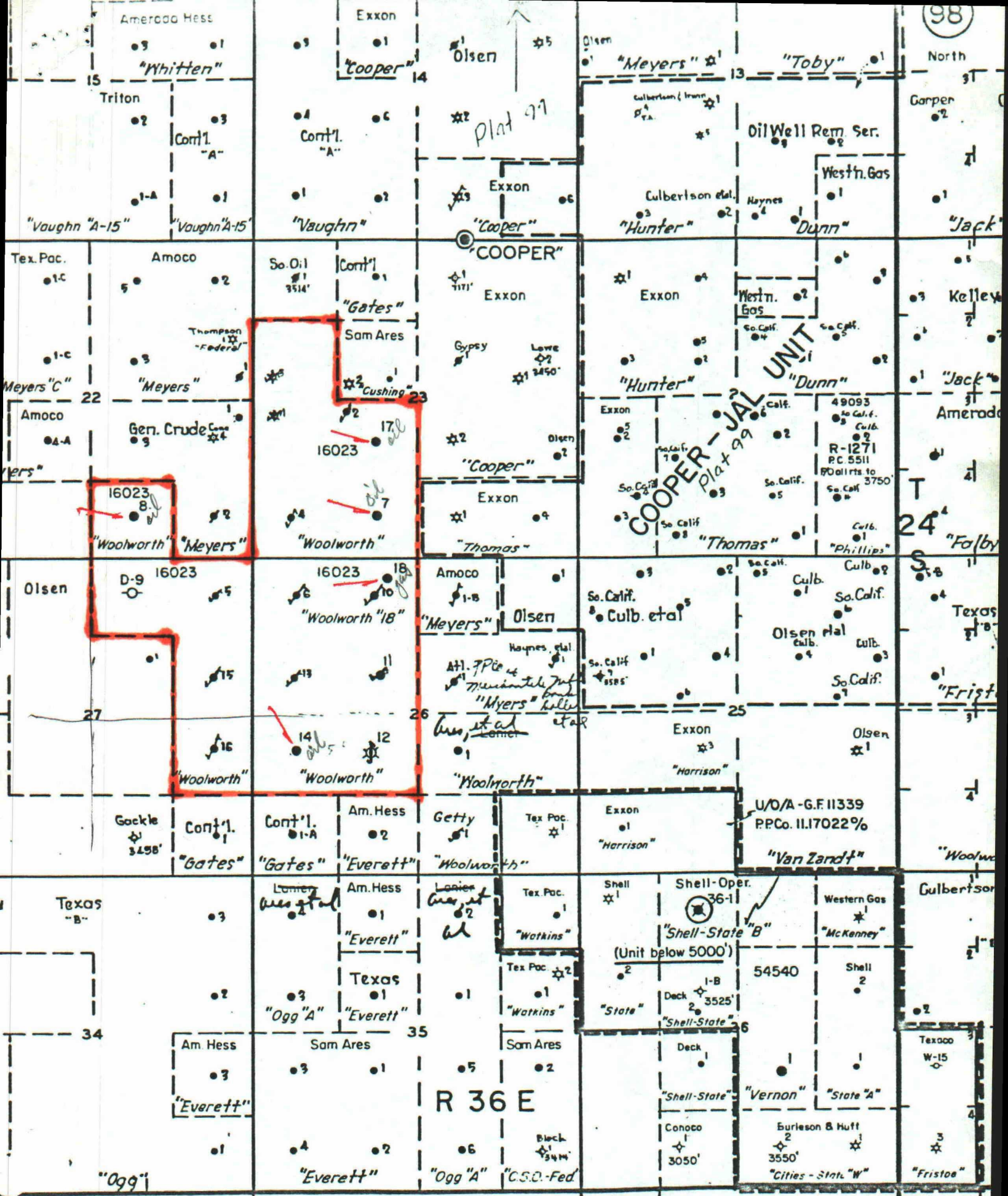
SURFACE COMMINGLING
FOR WELL TEST
ALLOCATION



⊗ PUMP

X VALVE

--- #18 TEST LINE



1-20-76

LEA CO., N. MEX.

SCALE - 1" = 2000'