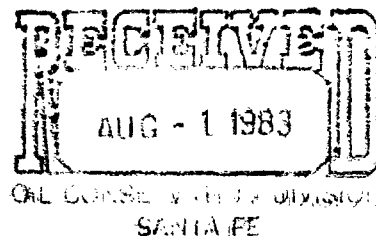


HENRY ENGINEERING  
*Petroleum Engineers*  
807 FIRST NATIONAL BANK BUILDING  
MIDLAND, TEXAS 79701

July 27, 1983



New Mexico Energy and Minerals Department  
Oil Conservation Division  
P.O. Box 2088  
Santa Fe, New Mexico 87501

Attn: Mr. Joe D. Ramey, Director

Re: Rule 303-B Surface Comingling  
Strawn & Devonian Production  
David Fasken Warren Lease  
Lea County, New Mexico

Gentlemen:

On behalf of our client, David Fasken, we are requesting an exception to Rule 303-A of the Division Rules and Regulations to surface comingling oil production from the Strawn and Devonian formations on the Warren Lease. The Warren Nos. 1 and 3 will produce from the Devonian and the Warren No. 2 from the Strawn. The commonly owned production will be metered prior to combining the two streams per Fig. 1 of Manual for the Installation and Operation of Comingling Facilities. Production from these same two reservoirs in the Midway Field were comingled per Order PLC-60 dated May 5, 1982, on the offsetting Consolidated State and Consolidated State "A" Leases.

The value of the comingled production will not change from the segregated production, because the purchaser, P & O Falco, pays a flat price for all oil of 40° API gravity or above. This is \$27.20 per barrel after W.P.T. Please refer to attached schedule.

The ownership (R.I., O.R.R.I., W.I., etc.) is identical in all three wells on the subject lease.

Any questions you may have concerning this request should be directed to myself or Mr. James B. Henry at 915-683-1893.

Yours truly,

HENRY ENGINEERING

A handwritten signature in cursive script that reads "Robert H. Angevine".  
Robert H. Angevine

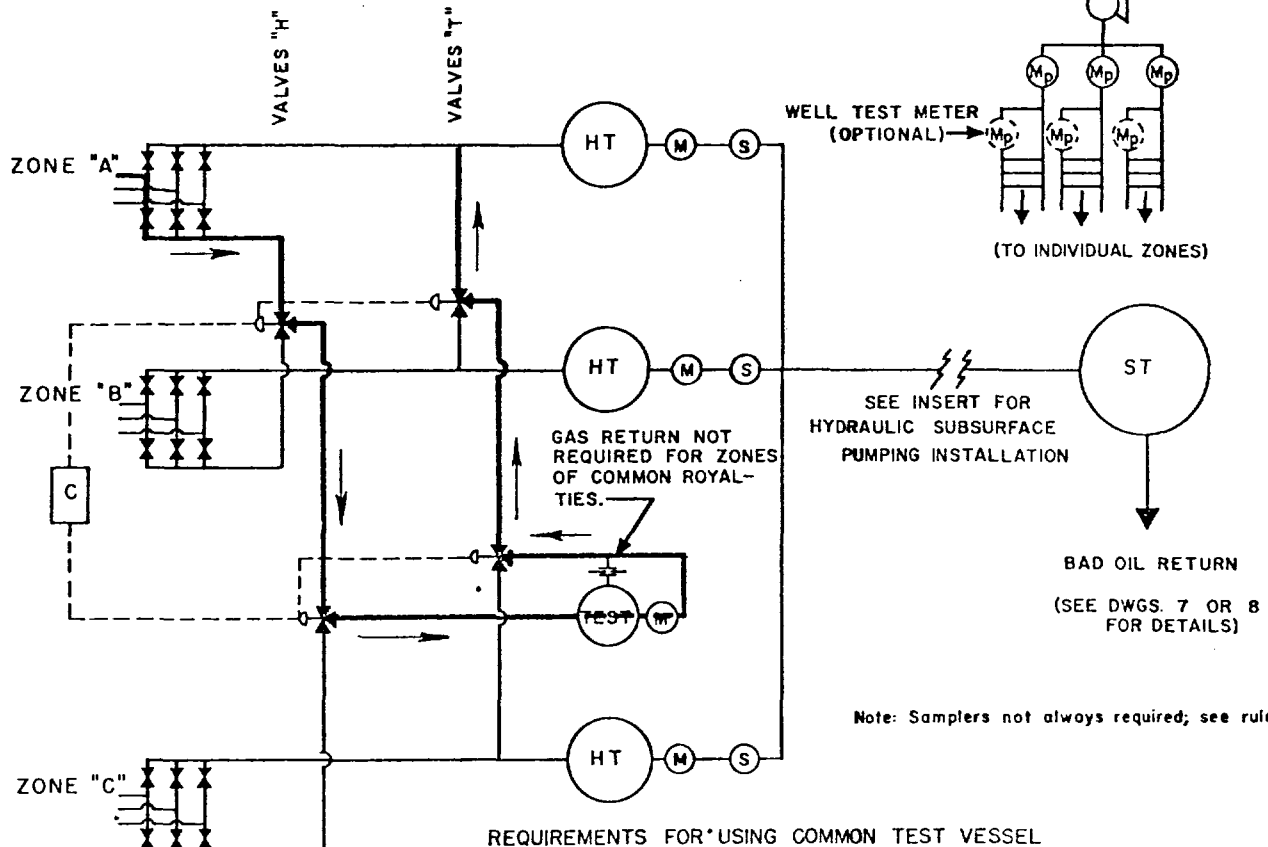
RHA:dt  
Attmts.

ESTIMATED CRUDE OIL VOLUME AND VALUE

WARREN LEASE

<u>TYPE</u> <u>OIL</u>	<u>A.P.I.</u> <u>GRAVITY</u>	<u>VOLUME</u> <u>B.O.P.D.</u>	<u>PRICE</u> <u>\$/Bbl. A/WPT</u>	<u>VALUE</u> <u>\$/DAY</u>
Strawn	45.5	250	27.20	6,800
Devonian	50.5	200	27.20	5,440
Comingled	46.3	450	27.20	12,240

# HYDRAULIC SUBSURFACE PUMPING INSTALLATION



1. Automatic well test header valves on individual well flowlines may be substituted for valve "H". Interlocking control as shown would then be required between each valve on the manifold and the respective valve "T".
2. Manual, pneumatic, or electrical interlocks must be provided between the appropriate valve "H" and valve "T" as shown. Control panel [C] and control lines to valves are not required if mechanical interlock is provided for manual operation.
3. Manual overrides on automatic well test header valves on individual well flowlines may be installed on production side only.

## SYMBOLS

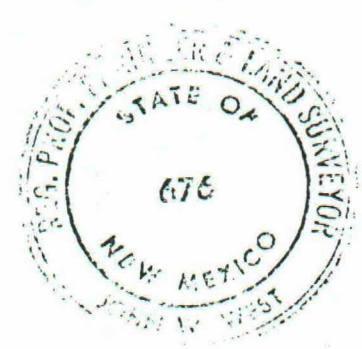
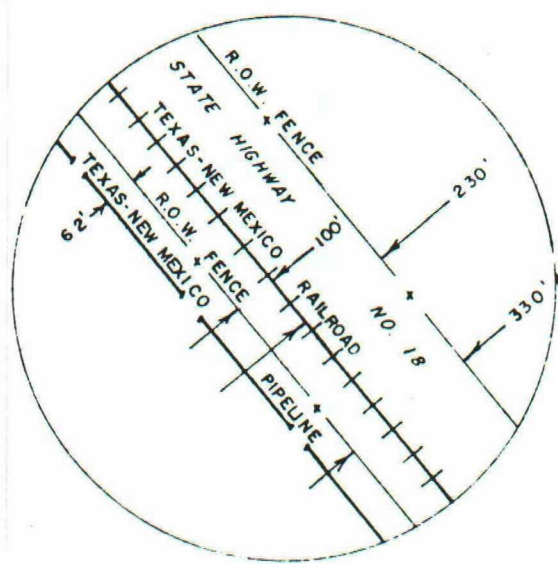
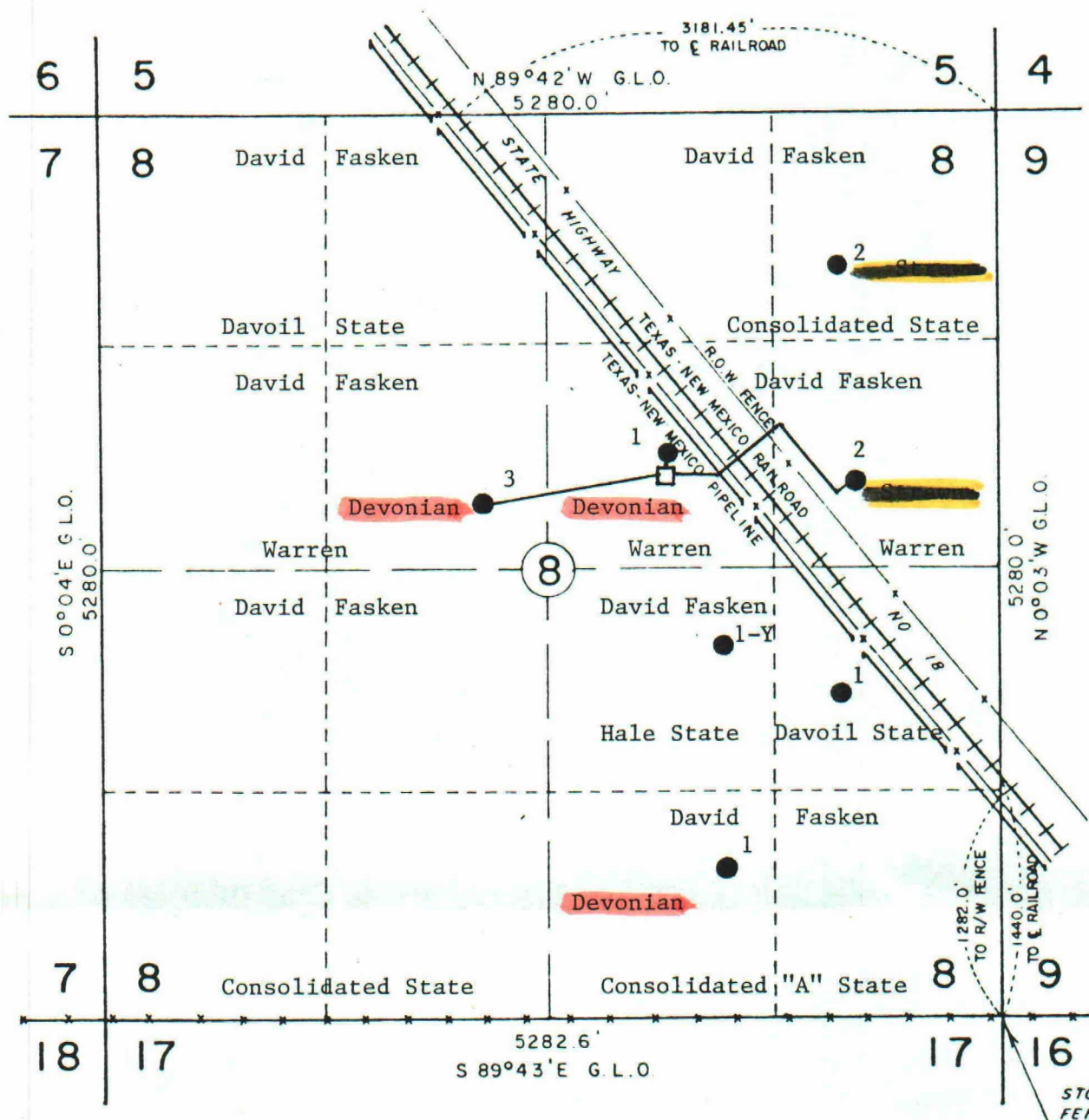
	CHECK VALVE.
	BLOCK VALVE.
	2 WAY VALVE (PNEUMATIC OR ELECTRICALLY CONTROLLED).
	3 WAY VALVE (MANUAL, PNEUMATIC OR ELECTRICALLY CONTROLLED).
	CONTROL PANEL (PNEUMATIC OR ELECTRICAL)
	GAS METER
	METER
	METER FOR POWER OIL
	TESTING VESSEL (HEATER-TREATER OR SEPARATOR)
	HEATER TREATER
	POWER OIL TANK
	STOCK TANK
	PUMP
	SEPARATOR
	SAMPLER

Red line indicates path followed by production from a Zone "A" well while on test.

INDIVIDUAL TREATERS USED IN COMMINGLING  
COMMON OR SEPARATE OWNERSHIP

NEW MEXICO OIL CONSERVATION COMMISSION  
MANUAL FOR COMMINGLING

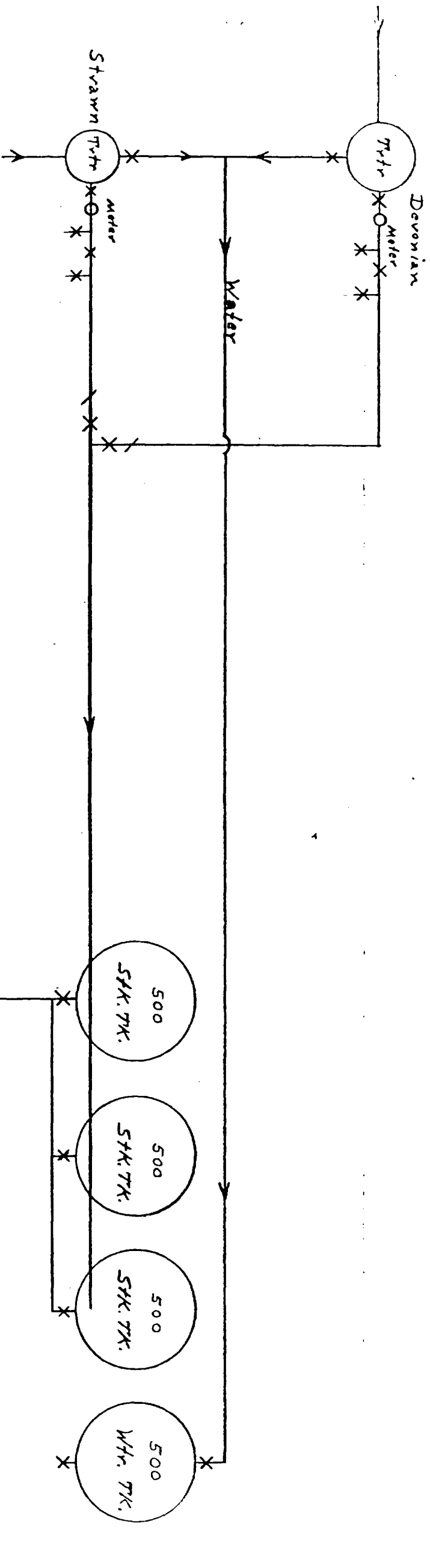
FIG. 1



I HEREBY CERTIFY THAT THIS PLAT WAS MADE FROM NOTES TAKEN IN THE FIELD IN A BONA FIDE SURVEY MADE UNDER MY SUPERVISION, AND THAT THE SAME IS TRUE AND CORRECT TO THE BEST OF MY KNOWLEDGE AND BELIEF.

*John W. West*  
JOHN W. WEST, N.M. P.E. & L.S. NO. 676  
TEXAS R.P.S. NO. 1138  
RONALD J. EIDSON, N.M. L.S. NO. 3239  
TEXAS R.P.S. NO. 1883

DAVID FASKEN	
A plat of Section 8, Township 17 South, Range 37 East, N.M.P.M., Lea County, New Mexico.	
JOHN W. WEST ENGINEERING COMPANY CONSULTING ENGINEERS HOBBS, NEW MEXICO	
Scale: 1" = 1000'	Drawn by: RKC
Date: 8/6/79	Sheet 1 of 1 Sheets



TANK BATTERY SCHEMATIC  
 Proposed Devonian - Strawn Comingled  
 David Fasken Warren Lease  
 Midway Field  
 Lea County, New Mexico