

re N/R

SAMEDAN OIL CORPORATION  
10 DESTA DRIVE  
SUITE 240 EAST  
MIDLAND, TEXAS 79705  
(915) 684-8491

Oil Conservation Division  
SEP 11 1993

September 3, 1993

State of New Mexico  
Oil Conservation Division  
Office of Bill Lamay  
PO Box 2088  
Santa Fe, NM 87504

Attention: Ben Stone

RE: Exception to Rule 303-A  
Surface Commingling of the  
Sarah B. Lease, Fed Lease #NM2244  
Sec 11, T-23-S, R-37-E, Lea County

Samedan is requesting permission to surface commingle the Tubb Pool and the Blinebry Pool in the Cline field at the tank battery located at the Sarah B Well #1, Sec 11, T-23-S, R-37-E, Lea County.

At the present time two wells, Sarah B #1 and Sarah B #2, are producing from the Tubb zone into the battery. Plans are being made for dual completions on both wells from the Blinebry zone and the Tubb zones.

1. Samedan owns and operates 100% of the Sarah B. Lease

2. Tubb Zone: Daily production = 85 bbls oil  
Gravity @ 60 = 33.8. Sulfur = .389  
Value = \$16.25 per bbl for sweet crude

Blinebry Zone: Daily Production = 70 bbls oil (estimate)  
Gravity @ 60 = 40.0 (representative)  
Value = \$16.35 per bbls for sweet crude

Commingled oil: Expected gravity = 37.0 Sweet Crude  
Expected value = \$16.31 per bbl.

3. The actual commercial value of the commingled production will be equal to the sum of the values of the production from each common source of supply.

10/11/93 10:00 AM

10/11/93 10:00 AM

Please find attached a schematic diagram of the battery installation and plats showing well locations. The Bureau of Land Management has been notified as per Form 3160-5, Sundry Notice, of our intentions.

If I can be of further help please notify at (915) 684-8491.

Thank you,

A handwritten signature in cursive script that reads "Judy Throneberry".

Judy Throneberry  
Division Production Clerk

attachments

Submit to Appropriate  
District Office  
State Lease - 4 copies  
Fee Lease - 3 copies

State of New Mexico  
Energy, Minerals and Natural Resources Department

Form C-102  
Revised 1-1-89

OIL CONSERVATION DIVISION

P.O. Box 2088  
Santa Fe, New Mexico 87504-2088

SAMEDAN OIL CORP  
RECEIVED

MAR 8 1993

DISTRICT I

P.O. Box 1080, Hobbs, NM 88240

DISTRICT II

P.O. Drawer DD, Artesia, NM 88210

DISTRICT III

1000 Rio Brazos Rd., Aztec, NM 87410

WELL LOCATION AND ACREAGE DEDICATION PLAT MIDLAND OFFICE

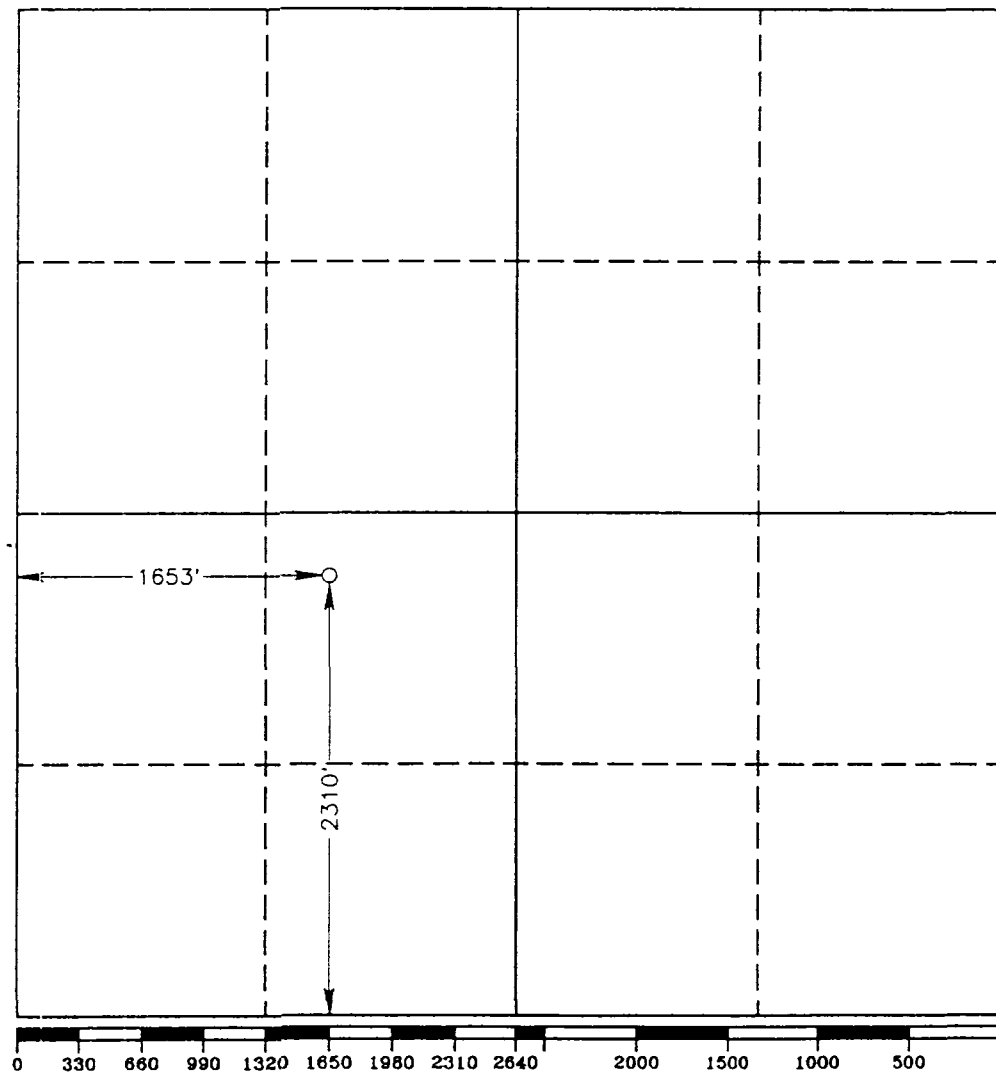
All Distances must be from the outer boundaries of the section

|  |                             |                      |                          |                                |               |
|--|-----------------------------|----------------------|--------------------------|--------------------------------|---------------|
| Operator<br>SAMEDAN OIL CORPORATION  |                             |                      | Lease<br>SARAH "B"       |                                | Well No.<br>2 |
| Unit Letter<br>K   | Section<br>12               | Township<br>23 SOUTH | Range<br>37 EAST<br>NMPM | County<br>LEA                  |               |
| Actual Footage Location of Well:<br>2310 feet from the SOUTH line and 1653 feet from the WEST line |                             |                      |                          |                                |               |
| Ground Level Elev.<br>3300.8'  | Producing Formation<br>TUBB |                      | Pool<br>CLINE            | Dedicated Acreage:<br>40 Acres |               |

1. Outline the acreage dedicated to the subject well by colored pencil or hatchure marks on the plat below.
2. If more than one lease is dedicated to the well, outline each and identify the ownership thereof (both as to working interest and royalty).
3. If more than one lease of different ownership is dedicated to the well, have the interest of all owners been consolidated by communitization, unitization, force-pooling, etc.?  
☐ Yes ☐ No If answer is "yes" type of consolidation \_\_\_\_\_

If answer is "no" list of owners and tract descriptions which have actually been consolidated. (Use reverse side of this form necessary.)

No allowable will be assigned to the well unit all interests have been consolidated (by communitization, unitization, forced-pooling, otherwise) or until a non-standard unit, eliminating such interest, has been approved by the Division.



OPERATOR CERTIFICATION

I hereby certify the the information  
contained herein is true and complete to the  
best of my knowledge and belief.

*John W. Jones*  
Signature

Printed Name

Position

Company

Date

SURVEYOR CERTIFICATION

I hereby certify that the well location shown  
on this plat was plotted from field notes of  
actual surveys made by me or under my  
supervision, and that the same is true and  
correct to the best of my knowledge and  
belief.

Date Surveyed

MARCH 04, 1993

Signature & Seal of  
Professional Surveyor

*Gary L. Jones*  
  
Certification No. JOHN W. JONES, 676  
RONALD J. EDSON, 3239  
GARY L. JONES, 7977  
93-11-0565

OIL CONSERVATION DIVISION

DISTRICT I  
P.O. Box 1880, Hobbs, NM 88240

P.O. Box 2088  
Santa Fe, New Mexico 87504-2088

DISTRICT II  
P.O. Drawer DD, Artesia, NM 88210

DISTRICT III  
100C Rio Brazos Rd., Aztec, NM 87410

WELL LOCATION AND ACREAGE DEDICATION PLAT

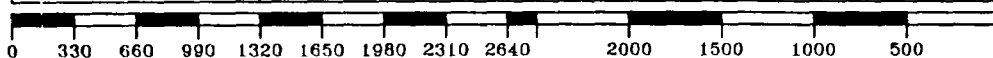
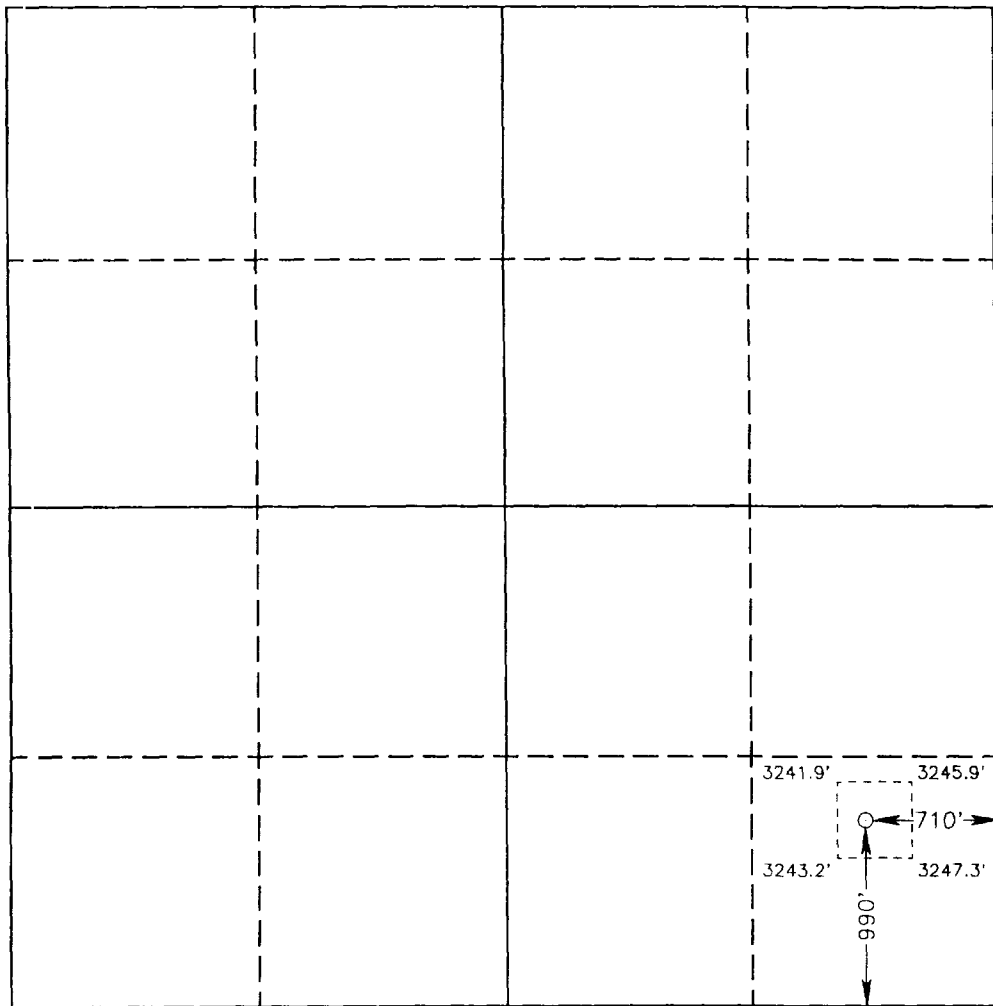
All Distances must be from the outer boundaries of the section

|  |                             |                      |                  |      |                                |
|--|-----------------------------|----------------------|------------------|------|--------------------------------|
| Operator<br>SAMEDAN OIL CORP.  |                             |                      | Lease<br>SARAH B |      | Well No.<br>1                  |
| Unit Letter<br>P   | Section<br>1                | Township<br>23 SOUTH | Range<br>37 EAST | NMPM | County<br>LEA                  |
| Actual Footage Location of Well:<br>990 feet from the SOUTH line and 710 feet from the EAST line |                             |                      |                  |      |                                |
| Ground Level Elev.<br>3239.2'  | Producing Formation<br>TUBB |                      | Pool<br>CLINE    |      | Dedicated Acreage:<br>40 Acres |

1. Outline the acreage dedicated to the subject well by colored pencil or hachure marks on the plat below.
2. If more than one lease is dedicated to the well, outline each and identify the ownership thereof (both as to working interest and royalty).
3. If more than one lease of different ownership is dedicated to the well, have the interest of all owners been consolidated by communitization, unitization, force-pooling, etc.?  
☐ Yes ☐ No If answer is "yes" type of consolidation \_\_\_\_\_

If answer is "no" list of owners and tract descriptions which have actually been consolidated. (Use reverse side of this form necessary.)

No allowable will be assigned to the well unit all interests have been consolidated (by communitization, unitization, forced-pooling, otherwise) or until a non-standard unit, eliminating such interest, has been approved by the Division.



OPERATOR CERTIFICATION

I hereby certify the the information  
contained herein is true and complete to the  
best of my knowledge and belief.

Signature

Printed Name

Position

Company

Date

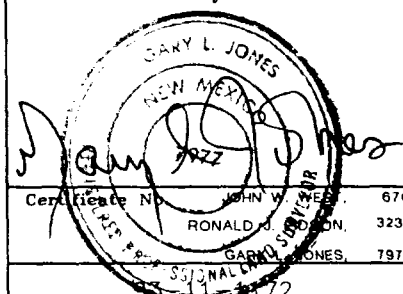
SURVEYOR CERTIFICATION

I hereby certify that the well location shown  
on this plat was plotted from field notes of  
actual surveys made by me or under my  
supervision, and that the same is true and  
correct to the best of my knowledge and  
belief.

Date Surveyed

June 17, 1993

Signature & Seal of  
Professional Surveyor



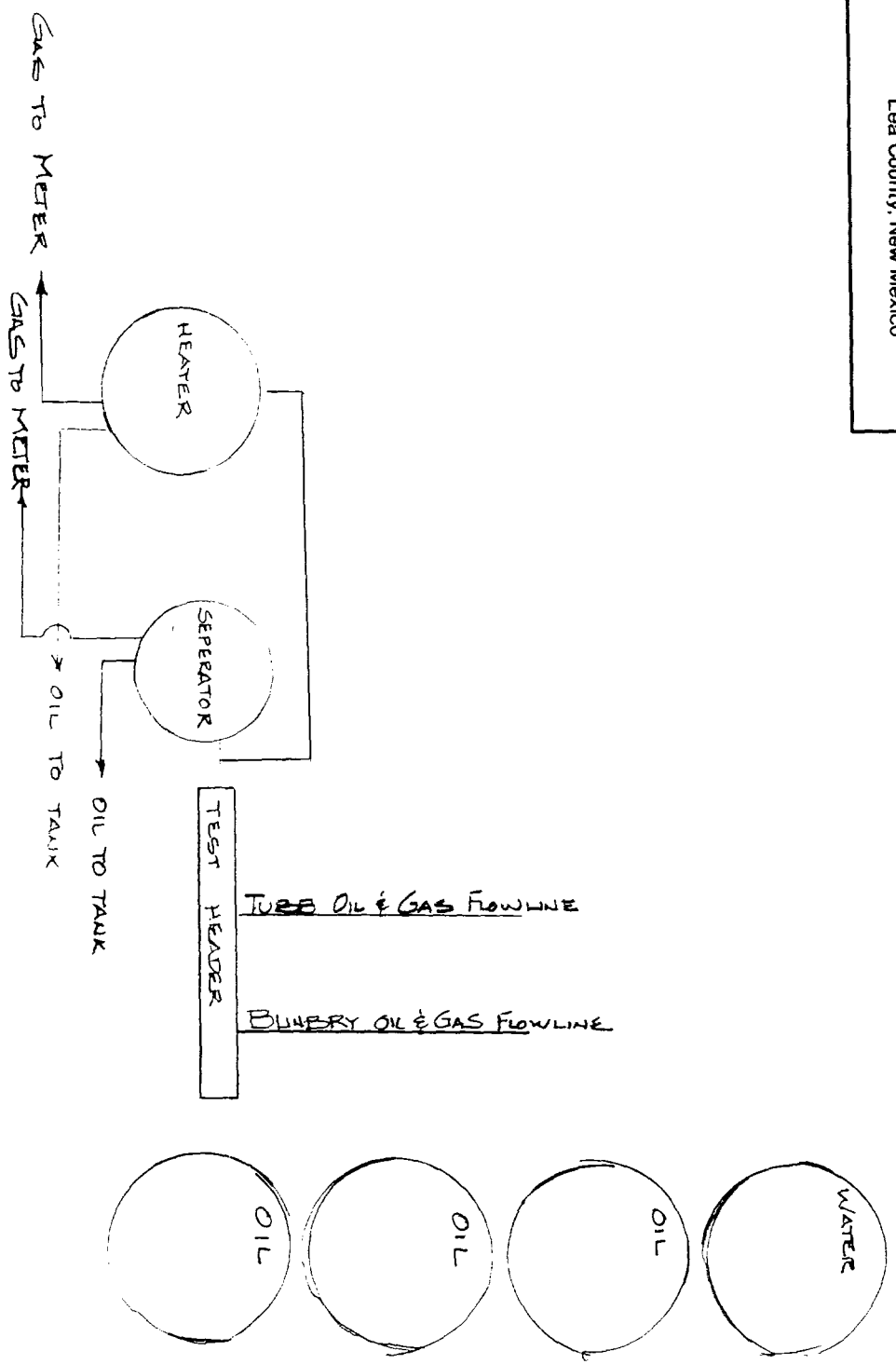


Samedan Oil Corporation  
10 Delta Drive, Suite 240 East  
Midland, Texas 79705




SARAH B LEASE TANK BATTERY

Section 11, T-23-S, R-37-E  
Lea County, New Mexico







T23S - R 37 E



Samedan Oil Corp  
Sarah B Lease



Proposed Road



Proposed Flowline

