

OIL CONSERVATION COMMISSION

P. O. BOX 2088

SANTA FE, NEW MEXICO 87501

August 5, 1969

Getty Oil Company
P. O. Box 249
Hobbs, New Mexico 88240

Attention: Mr. C. L. Wade

Administrative Order PLC-33
and
CANCELLATION
Administrative Order CTB-32

Gentlemen:

Reference is made to your application dated July 10, 1969, for administrative authority to commingle Blinebry, Tubb-Drinkard, Ellenburger, Montoya, and Fusselman production on your A. B. Coates "C" and "D" Leases in Section 24, Township 25 South, Range 37 East, Lea County, New Mexico. It is our understanding that all production from both leases is of common ownership; further that all production with the exception of the Ellenburger on the "C" lease and the Blinebry on the "C" lease is of marginal nature and that you therefore propose to commingle in the following manner:

System No. 1: Commingle "C" Ellenburger, Montoya, and Fusselman production after separately metering the Ellenburger production and determining total Montoya and Fusselman production by means of the subtraction method. Allocation of this total would then be to each pool and each lease on the basis of net oil computer tests.

System No. 2: Commingle "C" Blinebry and Tubb-Drinkard production and "D" Blinebry and Tubb-Drinkard production after separately metering the Blinebry production and determining the total Tubb-Drinkard production by means of the subtraction method. Allocation to each of the two leases would then be on the basis of monthly net oil computer tests.

OIL CONSERVATION COMMISSION

P. O. BOX 2088

SANTA FE, NEW MEXICO 87501

-2-

August 5, 1969

Getty Oil Company
P. O. Box 249
Hobbs, New Mexico 88240

Administrative Order PLC-33
and
CANCELLATION
Administrative Order CTB-32

C
O
P
Y

Pursuant to the authority granted me under the provisions of Rule 303 (b) and Rule 309-B of the Commission Rules and Regulations, you are hereby authorized to commingle the production from the aforesaid pools and leases in the above-described manner. Provided however, that the installation shall be operated in accordance with the provisions of the Commission "Manual for the Installation and Operation of Commingling Facilities," including the requirement for non-reset counters on the meters, and that you shall notify the Commission in the event that any of the production which is now of marginal nature should become capable of top allowable. You are further requested to notify the Hobbs District Office of the Commission at such time as the revision of the installation is complete in order that an inspection may be made thereof.

Administrative Order CTB-32 dated September 25, 1958, which authorized certain commingling on the subject leases, is hereby superseded, and Commission Orders Nos. R-1297 and R-1330-A, which also authorized certain commingling on these leases, are hereby put in abeyance.

It is the responsibility of the producer to notify the transporter of this commingling authority.

Very truly yours,

A. L. PORTER, Jr.
Secretary-Director

ALP/DSN/esr

cc: Oil Conservation Commission (with enclosure) - Hobbs
Oil & Gas Engineering Committee - Hobbs
United States Geological Survey - Roswell

4
Getty

Southern Division

P. O. Box 249
Hobbs, New Mexico 88240

July 10, 1969

New Mexico Oil Conservation Commission
P. O. Box 2088
Santa Fe, New Mexico

Attention: Mr. A. L. Porter, Jr.

PLC-
1330-14
Re: Application to Commingle Production
from the Blinbry, Ellenburger,
Fusselman, Montoya, Tubb-Drinkard
Zones on the A. B. Coates "C" (Las
Cruces 032650 b) and A. B. Coates
"D" (Las Cruces 032650 a) Leases,
Justis Multi-Pay Pool, Lea County,
New Mexico.

Gentlemen:

By this letter of application, Getty Oil Company respectfully requests administrative approval for the exception to Rules 303 and 309, and permission to commingle oil production on its A. B. Coates "C" (Las Cruces 032650 b) and A. B. Coates "D" (Las Cruces 032650 a) leases in the Justis Multi-Pay Pool, Lea County, New Mexico. (See attached plat of Getty's A. B. Coates "C" & "D" Leases.) In support of this application, Getty Oil Company submits the following information.

- (1) By Administrative Order CTB-32 dated September 25, 1958, commingling of the oil production from the Drinkard, Ellenburger, and Fusselman Zones on the A. B. Coates "C" and "D" Leases was authorized.
- (2) In Case No. 1550 which resulted in Order No. R-1297 being issued dated November 26, 1958, the commingling of all intermediate grade crude from various pays on the A. B. Coates "C" Lease was authorized.

In compliance with the above orders, Getty Oil Company constructed the oil production facilities as shown in Attachment I. The crude that is produced from the Blinbry and Tubb-Drinkard Zones is sold VIA a LACT to Texas-New Mexico Pipeline Company. The production from the Ellenburger, Fusselman, and Montoya Zones is sold VIA a LACT to Shell Pipeline Corporation.

Presently the total production from each zone is metered prior to commingling. Also the production from the various zones on the A. B. Coates "D" Lease is metered before it is commingled with that produced on the A. B. Coates "C" Lease. Producing zones on the A. B. Coates "D" Lease are the Blinbry,

Fusselman, and Tubb-Drinkard. To get these zones production on the A. B. Coates "C" Lease, the metered production from the "D" Lease is subtracted from the total metered production for the zone.

There is only one (1) well producing from each of the above mentioned zones on the Coates "D" Lease. All of these wells are marginal producers.

Getty Oil Company requests approval to alter the commingled facilities as follows and submits the following proposal.

- (1) Attachment II is a schematic of the proposed commingling facilities.
- (2) Continue to produce into the two oil sales systems as is presently being done. (LACT Units)
- (3) Production being sold to Shell Pipeline Corporation to be handled as follows:
 - (A) Meter the production from the Ellenburger zone on the Coates "C" Lease (Zone Meter No. 1) prior to commingling with the Fusselman and Montoya crude.
 - (B) Produce the wells completed in the Montoya (Coates "C" Lease, 6 wells), Fusselman (Coates "C" Lease, 2 wells), and (Coates "D" Lease, 1 well) zones together into a common facility.
 - (C) All the wells referred to in (B) above are not penalized nor capable of producing top allowable.
 - (D) The production from the Fusselman and Montoya zones will be determined by subtracting the metered Ellenburger production from the total combined production for the three zones (Ellenburger, Fusselman & Montoya.)
 - (E) Allocate the Fusselman and Montoya production to the appropriate zones, leases, and wells based upon monthly well tests.
- (4) The Production being sold to the Texas-New Mexico Pipeline Company to be handled as follows:
 - (A) Produce the Blinbry completions on the Coates "C" (10 wells) and the Coates "D" (1 well) leases together into a common facility and meter the production. (Zone Meter No. 2)
 - (B) The Blinbry well on the Coates "D" lease is a marginal producer.
 - (C) The Tubb-Drinkard completions on the Coates "C" (10 wells) and the Coates "D" (1 well) leases to be produced into common facilities, and the oil commingled with the Blinbry oil without metering.
 - (D) All of the Tubb-Drinkard completions are marginal producers.
 - (E) Obtain the Tubb-Drinkard production by subtracting the metered Blinbry oil from the total Blinbry and Tubb-Drinkard production.
 - (F) Allocate the Blinbry and the Tubb-Drinkard production to the appropriate leases and wells based upon monthly well tests.
- (5) Install two (2) new National Net Oil computer test systems. This will provide independent test facilities for testing the wells producing into the two separate sales systems.
- (6) Install bad oil treating facilities that would be utilized to treat tank bottoms and any oil diverted by the LACT units.

Getty Oil Company requests permission to make the above proposed revisions in the commingling method and facilities for the following reasons:

- (1) Generally the present production facilities are getting old and replacements will be required in the near future. By consolidation of zones and leases in the manner proposed, a minimum of new equipment necessary to continue production of marginal completions will be required.
- (2) The above proposed commingling facility will be in the interest of conservation in that it will permit ultimately more production from the various completions by reducing operating cost.

Sincerely yours,

GETTY OIL COMPANY

C. L. Wade
C. L. Wade
Area Supt.

JFE/clk



UNITED STATES
DEPARTMENT OF THE INTERIOR
GEOLOGICAL SURVEY
Drawer 1857
Roswell, New Mexico 88201

July 29, 1969

Getty Oil Company
P. O. Box 249
Hobbs, New Mexico 88240

Attention: Mr. C. L. Wade

Gentlemen:

Your letter of July 10 requests approval to modify the commingling system approved by our letter of September 12, 1958, leases Las Cruces 032650(a) and 032650(b). You now propose to discontinue separate measurement of production from the two leases and also separate measurement of Tubb-Drinkard, Fusselman, and Montoya zone production. Production not separately measured will be allocated to each lease and each zone on the basis of individual well tests.

The system for commingling described by the diagram attached to your letter is hereby approved subject to like approval by the New Mexico Oil Conservation Commission. Your Lessee's Monthly Report of Sales and Royalty, form 9-361, should show all computations used in allocating production to each lease.

Please notify our Hobbs office when the installation is completed so that a field inspection of the system can be made.

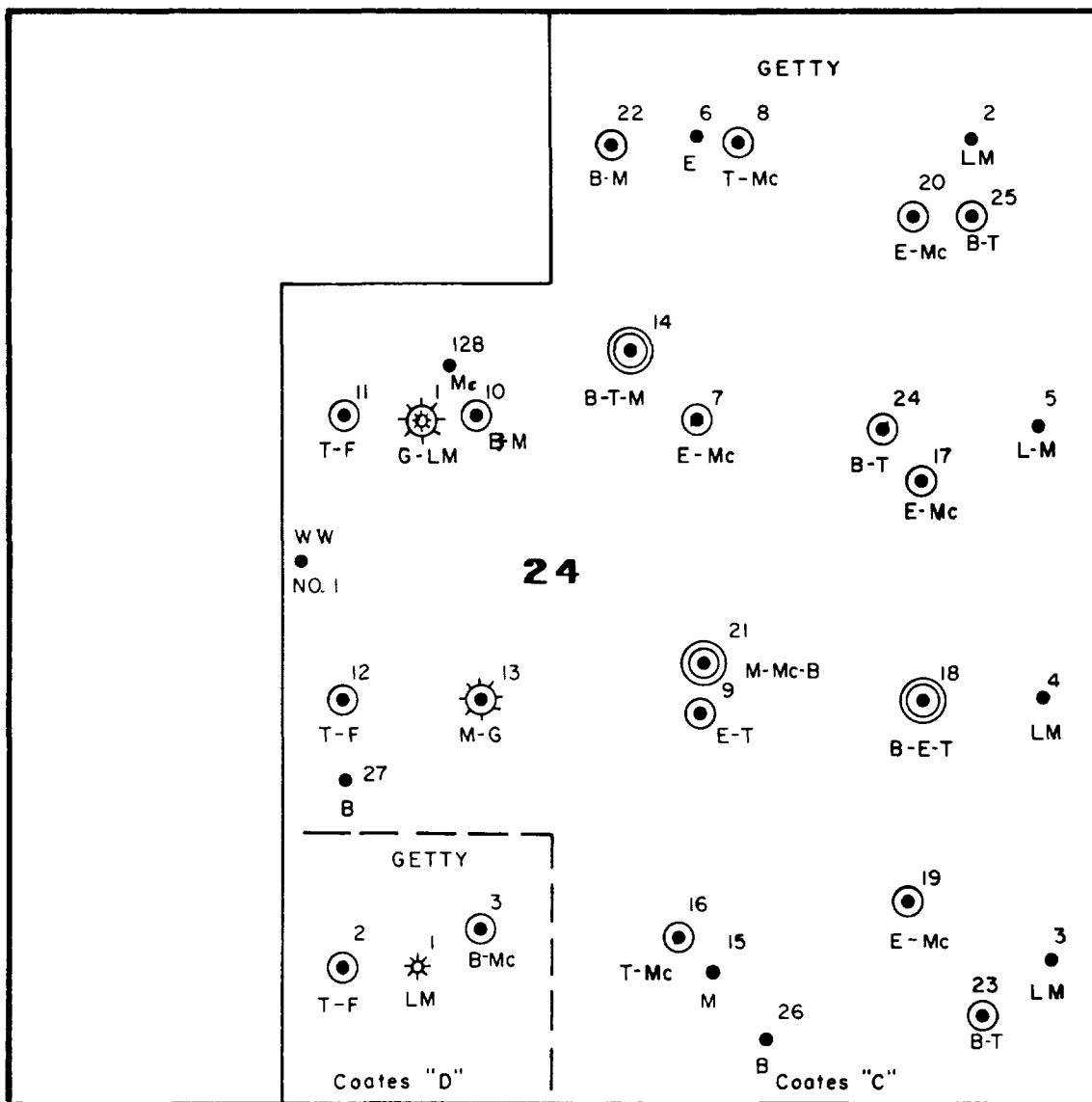
Sincerely yours,

CARL C. TRAYWICK
Acting Oil and Gas Supervisor



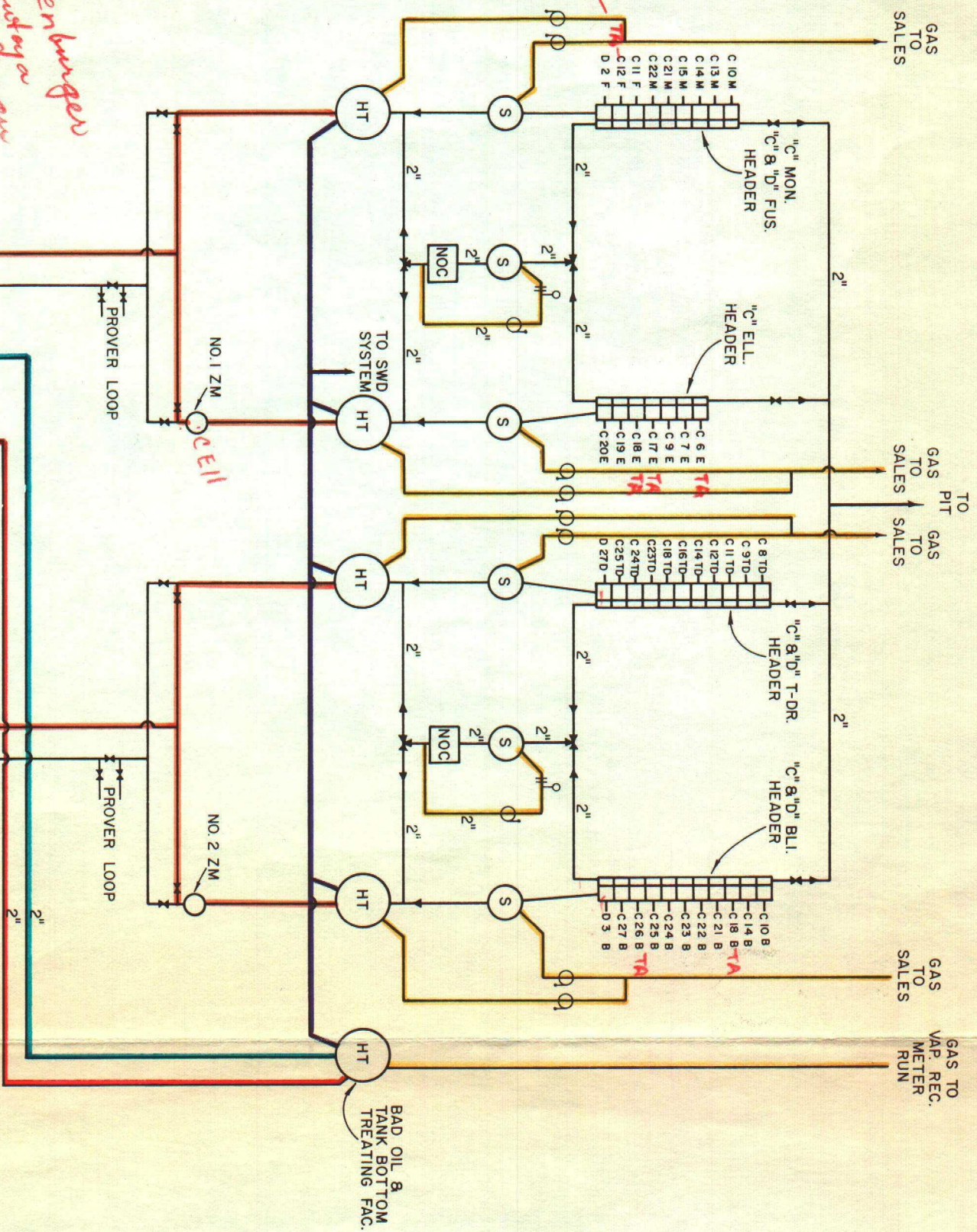
R 37 E

T
25
S




WW - WATER WELL	900'
LM - LANGLIE MATTIX	3300'
G - GLORIETA	4900'
B - BLINEBRY	5300'
T - TUBB - DRINKARD	5700'
F - FUSSELMAN	6800'
M - MONTOYA	6900'
Mc - McKEE	7300'
E - ELLENBURGER	8100'

GETTY OIL COMPANY
A.B. COATES "C" & "D" LEASES
JUSTIS POOLS
LEA COUNTY, NEW MEXICO



— **LEGEND** —

S	SEPARATOR
HT	HEATER TREATER
NOC	NET OIL COMPUTER (NATIONAL)
ZM	ZONE METER
CP	CIRCULATING PUMP
	VALVE
	CHECK VALVE
	BACK PRESSURE REGULATOR
	METER RUN & RECORDER
	THREE WAY VALVE
	COATES "C" LEASE
	COATES "D" LEASE
	FUSSELMAN ZONE
F	ELLENBURGER ZONE
E	TUBB DRINKARD ZONE
TD	BLINEBRY ZONE
B	MONTOKA ZONE
M	GAS
	WATER
	TREATED OIL TO PIPELINE
	BAD OIL & TANK BOTTOMS RETREATED
	BAD OIL & TANK BOTTOMS CIRCULATED
	BAD OIL DIVERTED BY LACT
	FLOW ROUTE FOR WELL ON TEST
	NORMAL PRODUCTION FLOW

— HEADER NOMENCLATURE EXAMPLE —

C 10 M
C-COATES "C" LEASE
10-WELL NO.
M-ZONE (MONTORA)

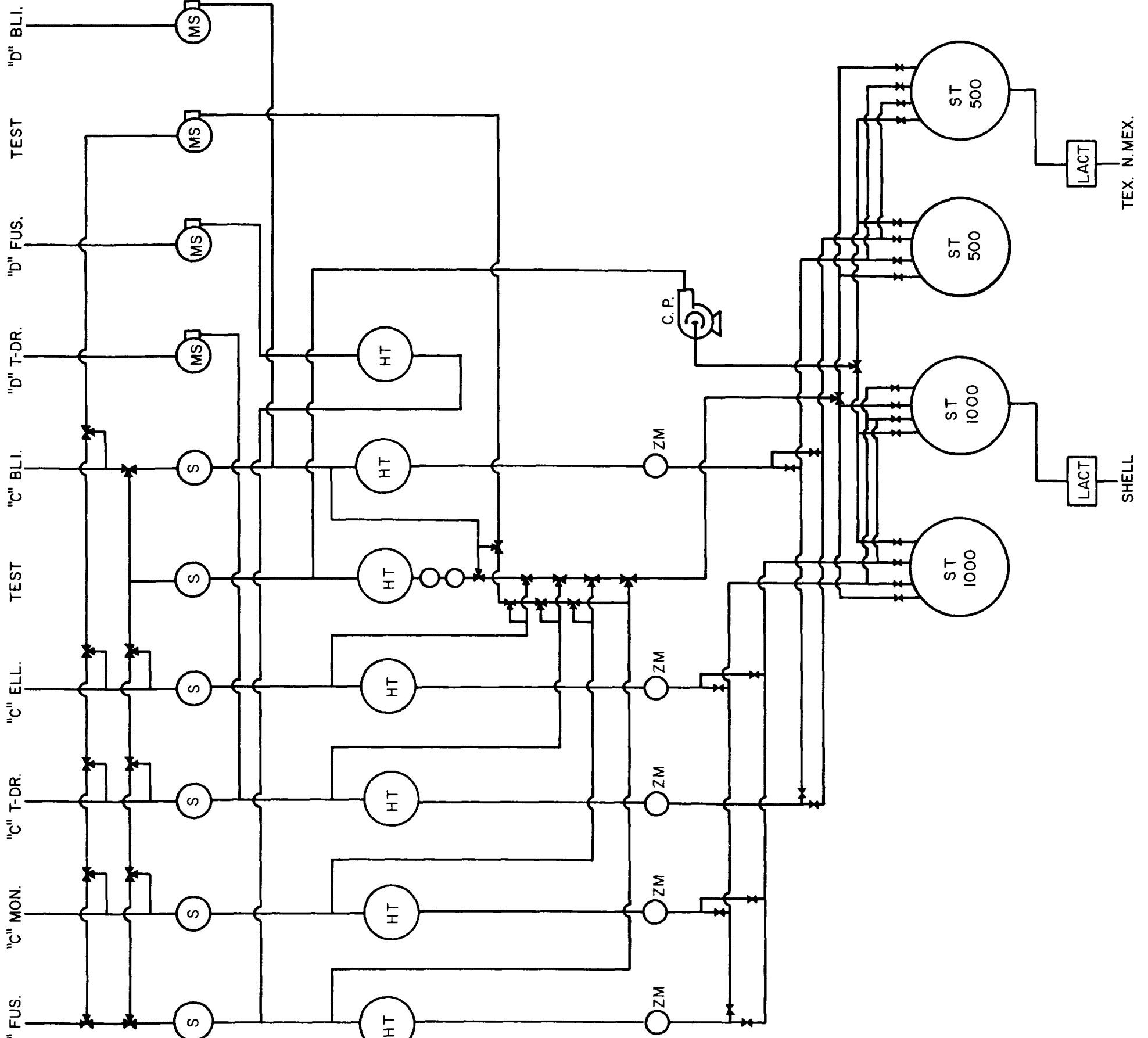
NOTE:
ALL UNDESIGNATED
PIPING IS 4"

ATTACHMENT II
GETTY OIL COMPANY
A. B. COATS "C" & "D" LEASES
SCHEMATIC OF PROPOSED COMINGLED
CENTRAL PRODUCTION FACILITY
JUSTIS MULTI-PAY POOL
LEA COUNTY, NEW MEXICO

[illegible]

II Community
Carter "C" PL
Carter "D" PL-1
T6 DN

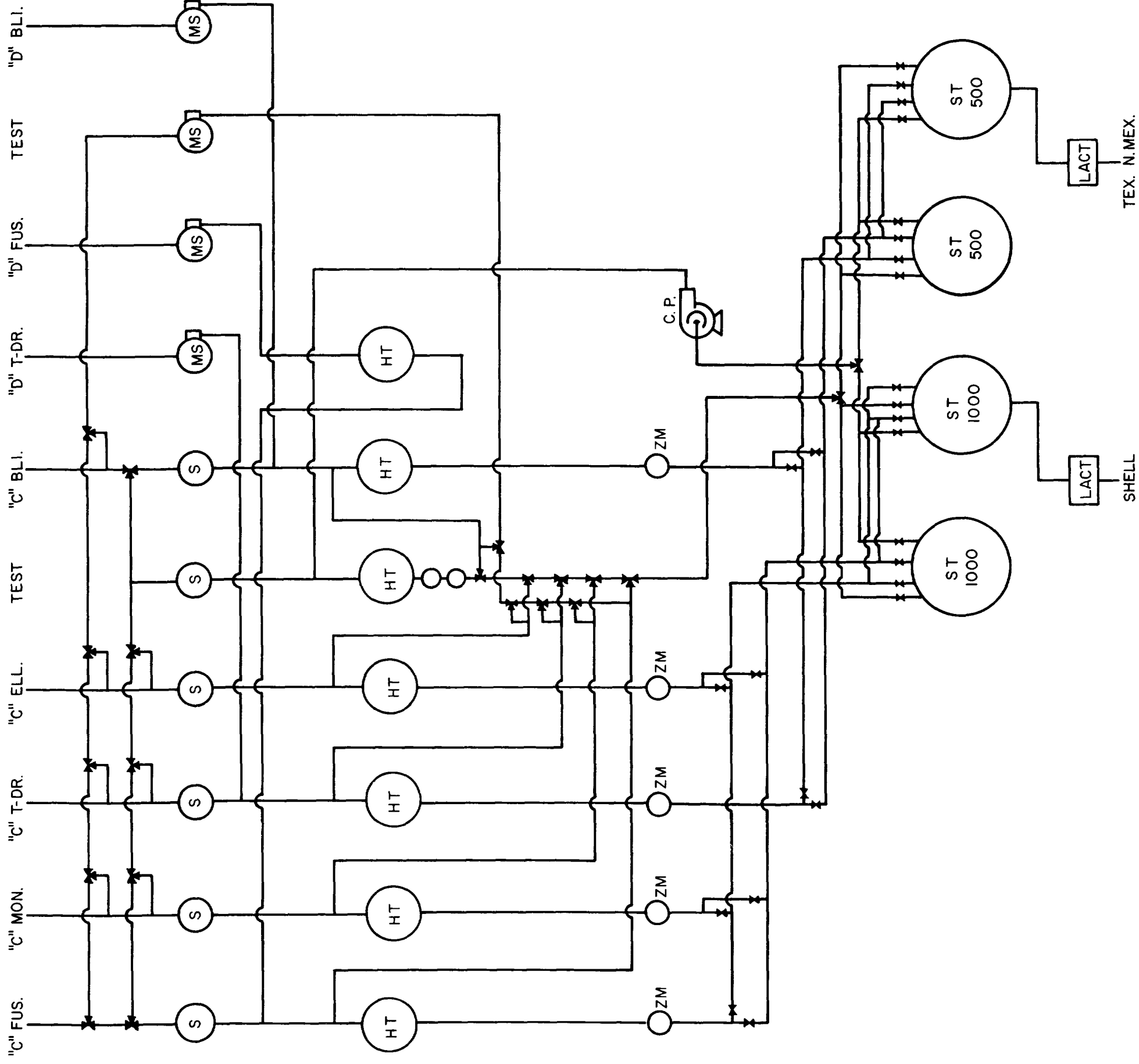
after separately, measuring
the Binding pool & determining
total ~~thaps~~ pool by
means of greater method
allocations to each of the two leaves
on basis of measuring net Oil Compounds tests



—LEGEND—

- S — SEPERATOR
- MS — METERING SEPERATOR
- HT — HEATER TREATER
- ZM — ZONE METER
- CP — CIRCULATING PUMP
- ST — STORAGE TANK
- ✕ — THREE WAY VALVE
- ✕ — BLOCK VALVE

ATTACHMENT I
GETTY OIL COMPANY
 A.B. COATS "C" & "D" LEASES
 SCHEMATIC OF PRESENT CENTRAL
 PRODUCTION FACILITY
 JUSTIS MULTI-PAY FIELD
 LEA COUNTY, NEW MEXICO



—LEGEND—

- S — SEPERATOR
- MS — METERING SEPERATOR
- HT — HEATER TREATER
- ZM — ZONE METER
- CP — CIRCULATING PUMP
- ST — STORAGE TANK
- THREE WAY VALVE
- BLOCK VALVE

ATTACHMENT I
 GETTY OIL COMPANY
 A.B. COATS "C" & "D" LEASES
 SCHEMATIC OF PRESENT CENTRAL
 PRODUCTION FACILITY
 JUSTIS MULTI-PAY FIELD
 LEA COUNTY, NEW MEXICO

NEW MEXICO OIL CONSERVATION COMMISSION
POST OFFICE BOX 2088
SANTA FE, NEW MEXICO 87501

AMENDMENT
COMMINGLING ORDER PLC-33

Company Getty Oil Company
Address P. O. Box 249
City, State, Zip Hobbs, New Mexico 88240

Attention: Mr. C. L. Wade

Lease Name: Coates "C" and Coates "D"
Description: Section 24, Township 25 South, Range 37 East
 Lea County, New Mexico

The above-named company is hereby authorized to commingle production from the following pools

Justis-Fusselman, Justis-Ellenburger, and Justis-Montoya

in a common tank battery, and to determine the production from each pool by well tests;

and to commingle Justis-Blinebry and Justis Tubb-Drinkard production in a separate system and to determine the production from each pool by well tests.

It is our understanding that the ownership of each of the aforesaid leases is identical throughout.

Note: This installation shall be installed and operated in accordance with the applicable provisions of Rule 303 of the Commission Rules and Regulations and the Commission "Manual for the Installation and Operation of Commingling Facilities." It is the responsibility of the producer to notify the transporter of this commingling authority.

REMARKS: Administrative Order PLC-33 prior to this amendment authorized commingling of the aforesaid production on these leases but only after certain separate metering.

DONE at Santa Fe, New Mexico, on this 26th day of February 1974.


A. L. PORTER, Jr., Secretary-Director

Getty Oil

~~XXXXXXXXXX~~ MID-CONTINENT EXPLORATION AND PRODUCTION DIVISION

P. O. Box 249
Hobbs, New Mexico 88240

January 18, 1974

New Mexico Oil Conservation Commission
P.O. Box 1980
Hobbs, New Mexico 88240

Attention: Mr. Joe D. Ramey

Mr. Nutter

Re: Application for Permission to
Remove Zone Meters on Getty
Oil Company's A. B. Coates "C"
(Las Cruces 032650 b) and A. B.
Coates "D" (Las Cruces 032650 a)
Leases, Justis Multi-Pay Pool,
Lea County, New Mexico

Gentlemen:

By this letter of application, Getty Oil Company respectfully requests administrative approval for the exception to Rules 303 and 309, and permission to commingle oil production on its A. B. Coates "C" (Las Cruces 032650 b) and A. B. Coates "D" (Las Cruces 032650 a) Leases in the Justis Multi-Pay Pool, Lea County, New Mexico by Monthly Well Tests. In support of this application, Getty Oil Company submits the following information:

1. By Administrative Order CTB-32 dated September 25, 1958, commingling of the oil production from the Drinkard, Ellenburger, and Fusselman Zones on the A. B. Coates "C" and "D" Leases was authorized.
2. In Case No. 1550 which resulted in Order No. R-1297 being issued dated November 26, 1958, the commingling of all intermediate grade crude from various pays on the A. B. Coates "C" Lease was authorized.
3. By Administrative Order PLC-33 dated August 5, 1969, authorization was obtained to commingle in the following manner:

System No. 1: Commingle "C" Ellenburger, Montoya, and Fusselman Production after separately metering the Ellenburger production and determining total Montoya and Fusselman production by means of the subtraction method. Allocation of this total would then be to each pool and each lease on the basis of net oil computer tests.

System No. 2: Commingle "C" Blinebry and Tubb-Drinkard production and "D" Blinebry and Tubb-Drinkard production after separately metering the Blinebry production and determining the total Tubb-Drinkard production by means of the subtraction method. Allocation to each of the two leases would then be on the basis of monthly net oil computer tests.

Attachment I is a schematic of the present commingling facilities.

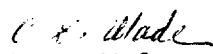
Application for Permission to
Remove Zone Meters-GETTY'S
A. B. COATES "C" & "D" LEASES
New Mexico Oil Conservation Commission
Hobbs, N.M. - January 18, 1974

PAGE NO. 2

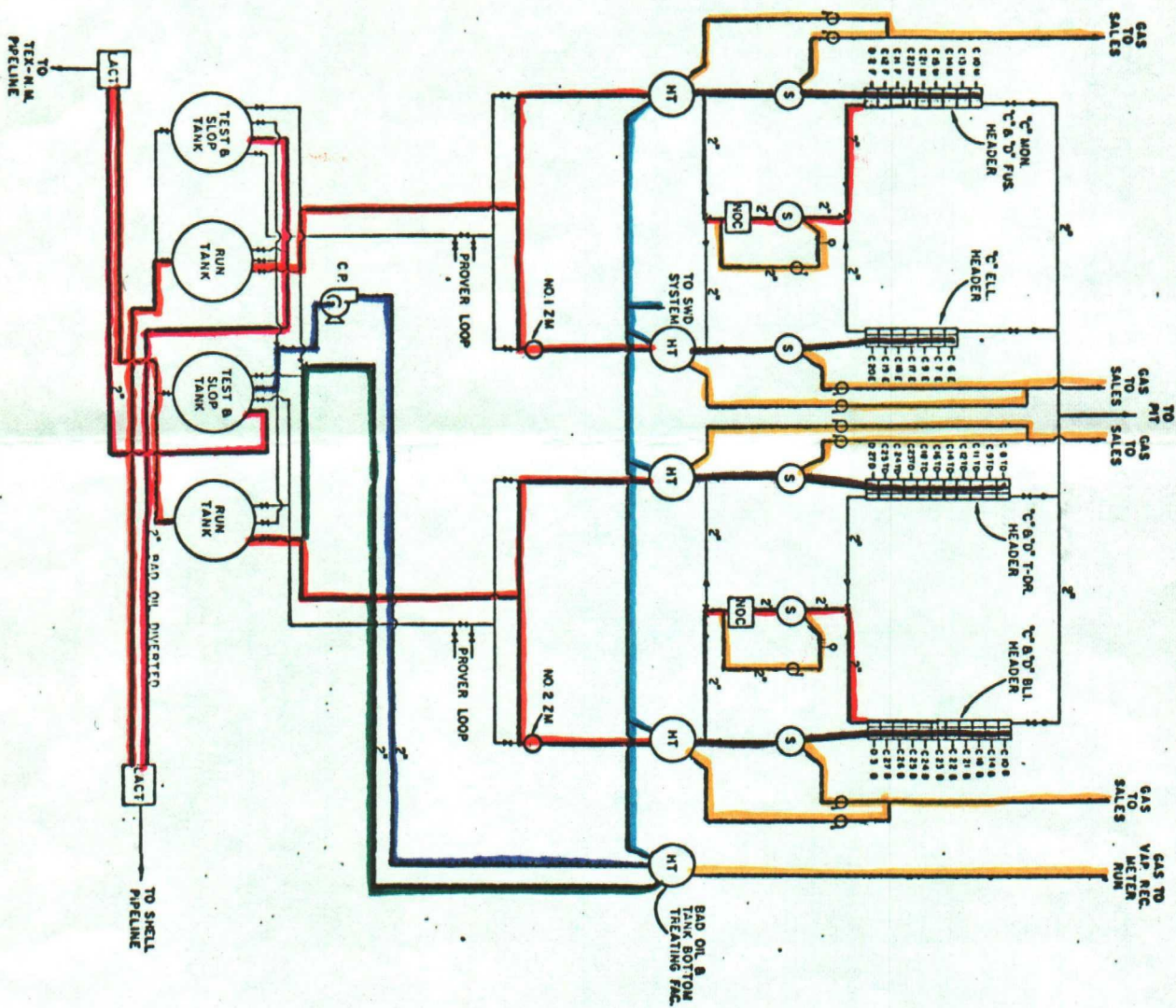
Getty oil company requests approval to alter the commingled facilities as follows and submits the following proposal:

1. Attachment II is a schematic of the proposed commingling facilities.
2. Continue to produce into two oil sales systems as is presently being done. (LACT Units.)
3. All wells producing on the A. B. Coates "C" and A. B. Coates "D" Leases are marginal producers; therefore, the zone meters are not required.
4. Production being sold to Shell Pipe Line Corporation to be handled as follows:
 - A. Allocate the Ellenburger "C", Fusselman "C", Fusselman "D", Montoya "C", and Montoya "D" production by Monthly Net Oil Computer Tests (well tests).
5. Production being sold to Texas-New Mexico Pipeline Company to be handled as follows:
 - A. Allocate the Blinbry "C", Blinbry "D", Tubb-Drinkard "C", and Tubb-Drinkard "D" production by Monthly Net Oil Computer Tests.

Very truly yours,
GETTY OIL COMPANY


C. L. Wade
Area Superintendent

EJM-HBS/bh
ATTACHMENTS



—LEGEND—

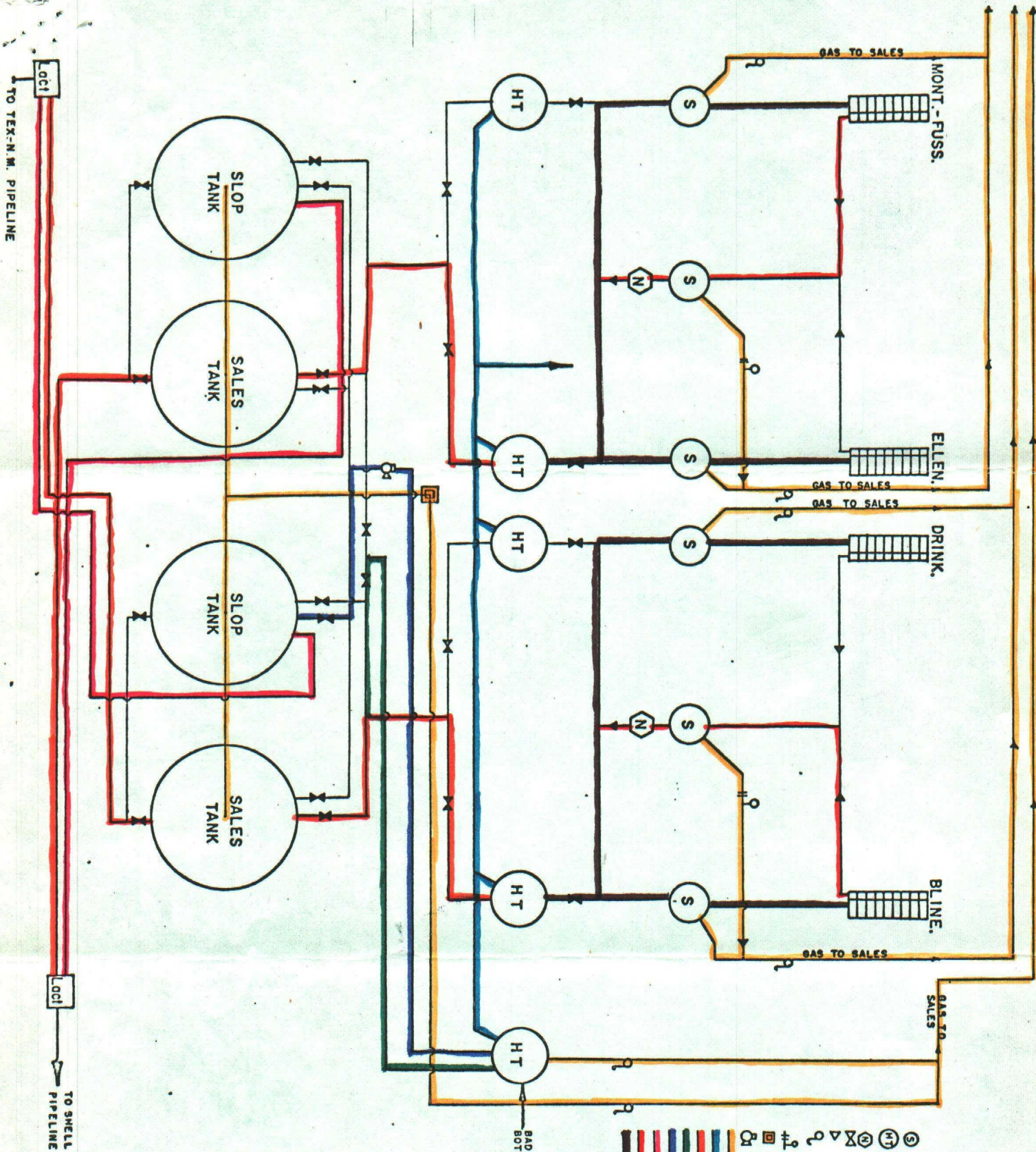
- S SEPARATOR
- HT HEATER TREATER
- MOC NET OIL COMPUTER (NATIONAL)
- ZM ZONE METER
- CP CIRCULATING PUMP
- VALVE
- CHECK VALVE
- BLACK PRESSURE REGULATOR
- METER RUN & RECORDER
- THREE WAY VALVE
- T-DR TREATING DRUM
- C' LEASE COATES 'C' LEASE
- F FUSSELLMAN ZONE
- E ELLENBURGER ZONE
- T TUBB DRINKARD ZONE
- B BLINBRY ZONE
- M MONTOWA ZONE
- GAS
- WATER
- TREATED OIL TO PIPELINE RETREATED
- BAD OIL & TANK BOTTOMS CIRCULATED
- BAD OIL & TANK BOTTOMS CIRCULATED
- BAD OIL DIVERTED BY LACT
- FLOW ROUTE FOR WELL ON TEST
- NORMAL ZONE PRODUCTION FLOW

—HEADER NOMENCLATURE EXAMPLE—

C-10
S-COATES 'C' LEASE
B-WELL ON
M-DRUM (MONTOWA)

NOTE:
ALL UNDESIGNATED
PIPING IS 4"

ATTACHMENT 1
GETTY OIL COMPANY
A.B. COATES 'C' & 'D' LEASES
SCHEMATIC OF PRESENT COMINGLED
CENTRAL PRODUCTION FACILITY
ASTIS MULTI-PAY POOL
LEA COUNTY, NEW MEXICO



- LEGEND—
- SEPARATOR
 - ⊙ HEATER TREATER
 - ⊙ NET OIL COMPUTER
 - ⊙ VALVE
 - ⊙ CHECK VALVE
 - ⊙ BACK PRESSURE REGULATOR
 - ⊙ METER RUN & RECORDER
 - ⊙ VAPOR RECOVERY UNIT
 - ⊙ CIRCULATING PUMP
 - ⊙ GAS
 - ⊙ WATER
 - ⊙ TREATED OIL TO PIPELINE
 - ⊙ BAD OIL & TANK BOTTOMS PETREATED
 - ⊙ BAD OIL & TANK BOTTOMS CIRCULATED
 - ⊙ BAD OIL DIVERTED BY LACT
 - ⊙ FLOW ROUTE FOR WELL ON TEST
 - ⊙ NORMAL ZONE PRODUCTION FLOW

ATTACHMENT II

GETTY OIL COMPANY

A. B. COATES "C" & "D" LEASES

SCHEMATIC OF PROPOSED COUINGLED

CENTRAL PRODUCTION FACILITY

AUGUST MULTI-PAY #004

LEA COUNTY, NEW MEXICO