

10/19/02	10/30/02	ENGINEER	LOGGED IN	AMEND NSL	APP NO. 228352831
----------	----------	----------	-----------	--------------	-------------------

ABOVE THIS LINE FOR DIVISION USE ONLY

NEW MEXICO OIL CONSERVATION DIVISION
- Engineering Bureau -
1220 South St. Francis Drive, Santa Fe, NM 87505



ADMINISTRATIVE APPLICATION CHECKLIST

THIS CHECKLIST IS MANDATORY FOR ALL ADMINISTRATIVE APPLICATIONS FOR EXCEPTIONS TO DIVISION RULES AND REGULATIONS WHICH REQUIRE PROCESSING AT THE DIVISION LEVEL IN SANTA FE

Application Acronyms:

[NSL-Non-Standard Location] [NSP-Non-Standard Proration Unit] [SD-Simultaneous Dedication]
[DHC-Downhole Commingling] [CTB-Lease Commingling] [PLC-Pool/Lease Commingling]
[PC-Pool Commingling] [OLS - Off-Lease Storage] [OLM-Off-Lease Measurement]
[WFX-Waterflood Expansion] [PMX-Pressure Maintenance Expansion]
[SWD-Salt Water Disposal] [IPI-Injection Pressure Increase]
[EOR-Qualified Enhanced Oil Recovery Certification] [PPR-Positive Production Response]

- [1] **TYPE OF APPLICATION** - Check Those Which Apply for [A]
[A] Location - Spacing Unit - Simultaneous Dedication
☒ NSL ☐ NSP ☐ SD

Check One Only for [B] or [C]

- [B] Commingling - Storage - Measurement
☐ DHC ☐ CTB ☐ PLC ☐ PC ☐ OLS ☐ OLM

- [C] Injection - Disposal - Pressure Increase - Enhanced Oil Recovery
☐ WFX ☐ PMX ☐ SWD ☐ IPI ☐ EOR ☐ PPR

- [D] Other: Specify _____

- [2] **NOTIFICATION REQUIRED TO:** - Check Those Which Apply, or ☐ Does Not Apply
[A] ☐ Working, Royalty or Overriding Royalty Interest Owners
[B] ☐ Offset Operators, Leaseholders or Surface Owner
[C] ☐ Application is One Which Requires Published Legal Notice
[D] ☐ Notification and/or Concurrent Approval by BLM or SLO
U.S. Bureau of Land Management - Commissioner of Public Lands, State Land Office
[E] ☐ For all of the above, Proof of Notification or Publication is Attached, and/or,
[F] ☐ Waivers are Attached

- [3] **SUBMIT ACCURATE AND COMPLETE INFORMATION REQUIRED TO PROCESS THE TYPE OF APPLICATION INDICATED ABOVE.**

- [4] **CERTIFICATION:** I hereby certify that the information submitted with this application for administrative approval is **accurate** and **complete** to the best of my knowledge. I also understand that no action will be taken on this application until the required information and notifications are submitted to the Division.

Note: Statement must be completed by an individual with managerial and/or supervisory capacity.

Matt J. Brewer
Print or Type Name

Matt J. Brewer
Signature

Geological Engineer
Title

10/8/02
Date

ccarter@pvtnetworks.net
e-mail Address



P.O. Box 960
Artesia, NM 88211-0960
Office (505) 748-1288
Fax (505) 746-9539

October 8, 2002

Oil Conservation Division
Attn: Mike Stogner
1220 South St. Francis Dr.
Santa Fe, NM 87505

*BLM request move
To North (UNORTH)
also To West (ortho OK)*

Dear Mr. Stogner:

Mack Energy Corporation respectfully requests an administrative approval without notice and hearing of the following unorthodox well location.

Because of our desire to drill this well in a timely manner, we also request your approval be expedited. The well location and legal description is as follows:

Jenkins B Federal #15
1500 FNL & 2310 FWL
Sec. 20, T17S, R30E
Eddy County, New Mexico

The well will be completed in the Paddock formation in the Loco Hills Paddock Pool.

Attached to this application are the following exhibits.

- A.) Well location and acreage dedication plat (form C-102) filed with the Artesia office of the Oil Conservation Division (Exhibit A).
- B.) A map showing the proposed unorthodox locations, the respective proration units, and the offsetting proration units (Exhibit B).
- C.) A map showing the reason for the unorthodox location, the original location would have fallen directly on top of Navajo's buried pipeline (Exhibit C).
- D.) A lease & well location map showing the proposed location and 3 producing wells on this particular 40-acre tract (Exhibit D).

Oil Conservation Division

October 8, 2002

Page 2

Moving the location 150' to the north will give the distance needed to build a location away from the pipeline. The location would have to be moved approximately 250' south to get away from the pipeline to make it orthodox. There are no other possible orthodox locations for this well due to existing locations being located on 10-acre spacing.

Thank you for your assistance in this matter. If you have any questions, please feel free to call.

Sincerely,

MACK ENERGY CORPORATION

A handwritten signature in black ink that reads "Matt J. Brewer". The signature is written in a cursive, flowing style.

*Matt J. Brewer
Geological Engineer*

MJB/jws

Enclosures

DISTRICT I
P.O. Box 1980, Hobbs, NM 88241-1980

State of New Mexico
Energy, Minerals and Natural Resources Department

Form C-102
Revised February 10, 1994
Submit to Appropriate District Office
State Lease - 4 Copies
Fee Lease - 3 Copies

DISTRICT II
P.O. Drawer DD, Artesia, NM 88211-0719

OIL CONSERVATION DIVISION

P.O. Box 2088

Santa Fe, New Mexico 87504-2088

DISTRICT III
1000 Rio Brazos Rd., Aztec, NM 87410

DISTRICT IV
P.O. BOX 2088, SANTA FE, N.M. 87504-2088

WELL LOCATION AND ACREAGE DEDICATION PLAT

☐ AMENDED REPORT

API Number	Pool Code 96718	Pool Name Loco Hills Paddock
Property Code 006125	Property Name JENKINS B FED	Well Number 15
OGRID No. 013837	Operator Name MACK ENERGY CORPORATION	Elevation 3639'

Surface Location

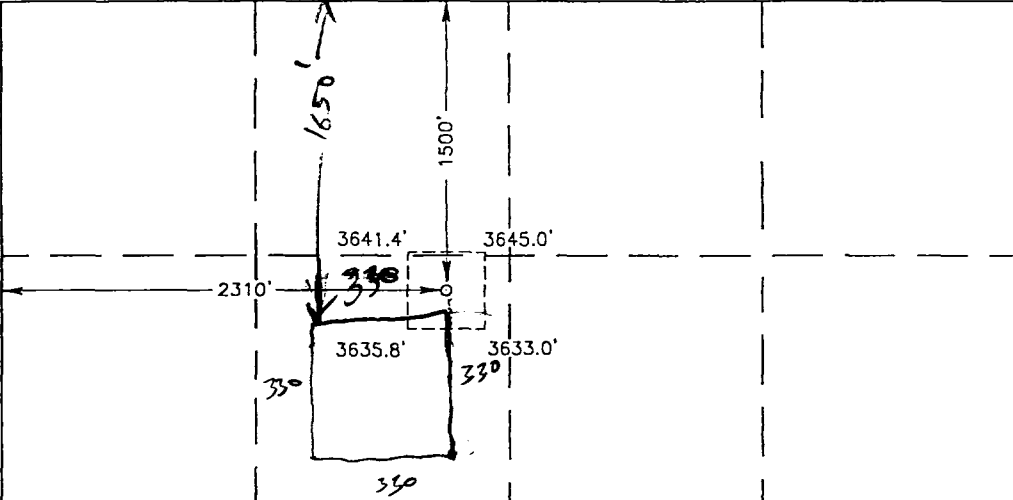
UL or lot No. F	Section 20	Township 17-S	Range 30-E	Lot Idn	Feet from the 1500	North/South line NORTH	Feet from the 2310	East/West line WEST	County EDDY
--------------------	---------------	------------------	---------------	---------	-----------------------	---------------------------	-----------------------	------------------------	----------------

Bottom Hole Location If Different From Surface

UL or lot No.	Section	Township	Range	Lot Idn	Feet from the	North/South line	Feet from the	East/West line	County
---------------	---------	----------	-------	---------	---------------	------------------	---------------	----------------	--------

Dedicated Acres 40	Joint or Infill	Consolidation Code	Order No.
-----------------------	-----------------	--------------------	-----------

NO ALLOWABLE WILL BE ASSIGNED TO THIS COMPLETION UNTIL ALL INTERESTS HAVE BEEN CONSOLIDATED
OR A NON-STANDARD UNIT HAS BEEN APPROVED BY THE DIVISION

	<p>OPERATOR CERTIFICATION</p> <p>I hereby certify that the information contained herein is true and complete to the best of my knowledge and belief.</p> <p><i>Matt J. Brewer</i> Signature</p> <p>Matt J. Brewer Printed Name</p> <p>Geological Engineer Title</p> <p>10/7/2002 Date</p>
<p>GEOGRAPHIC COORDINATES SPC NME NAD 1927 Y = 663300.8 X = 603210.6 LAT. - 32°49'22.98"N LONG. - 103°59'50.48"W</p>	<p>SURVEYOR CERTIFICATION</p> <p>I hereby certify that the well location shown on this plat was plotted from field notes of actual surveys made by me or under my supervision, and that the same is true and correct to the best of my belief.</p> <p>SEPTEMBER 16, 2002</p> <p>Date Surveyed _____ LA</p> <p>Signature & Seal of Professional Surveyor <i>Ronald E. Edson</i> 02.11/067008</p> <p>Certificate No. RONALD E. EDSON 3239 GARY EDSON 12641</p>

Burch
257 303
Marbob
24 26
028793 275
25 P22
28 297 27
Fed
17011447

Gbg. Op 55 225
54 Unit P35
56
58 (00)
93 242
04 5 244 265
4 (00) 57
262 97 269
T/A 95
95
265 T/A
229 96 98
P9 274 WI 270
102
Marbob
028792 100 285
101-WI
296
296-Y

lips 301 Marbob
Op. P88 028737
148 295
wi
Gen. Amer. 308
rbg. Jackson
In. Ut. 147
0 9600
3A 3-2-70
150 149
"C" Gen. Amer.
Grbg Op
Tail

deriv Birdie Fed
So West Roy SR
ARCO
Fed 1 12
P190 2
Marbob
Birdie Fed
ARCO
McIntyre
(00)
4 8
3 U.S. 11
7 McIntyre-Fed.

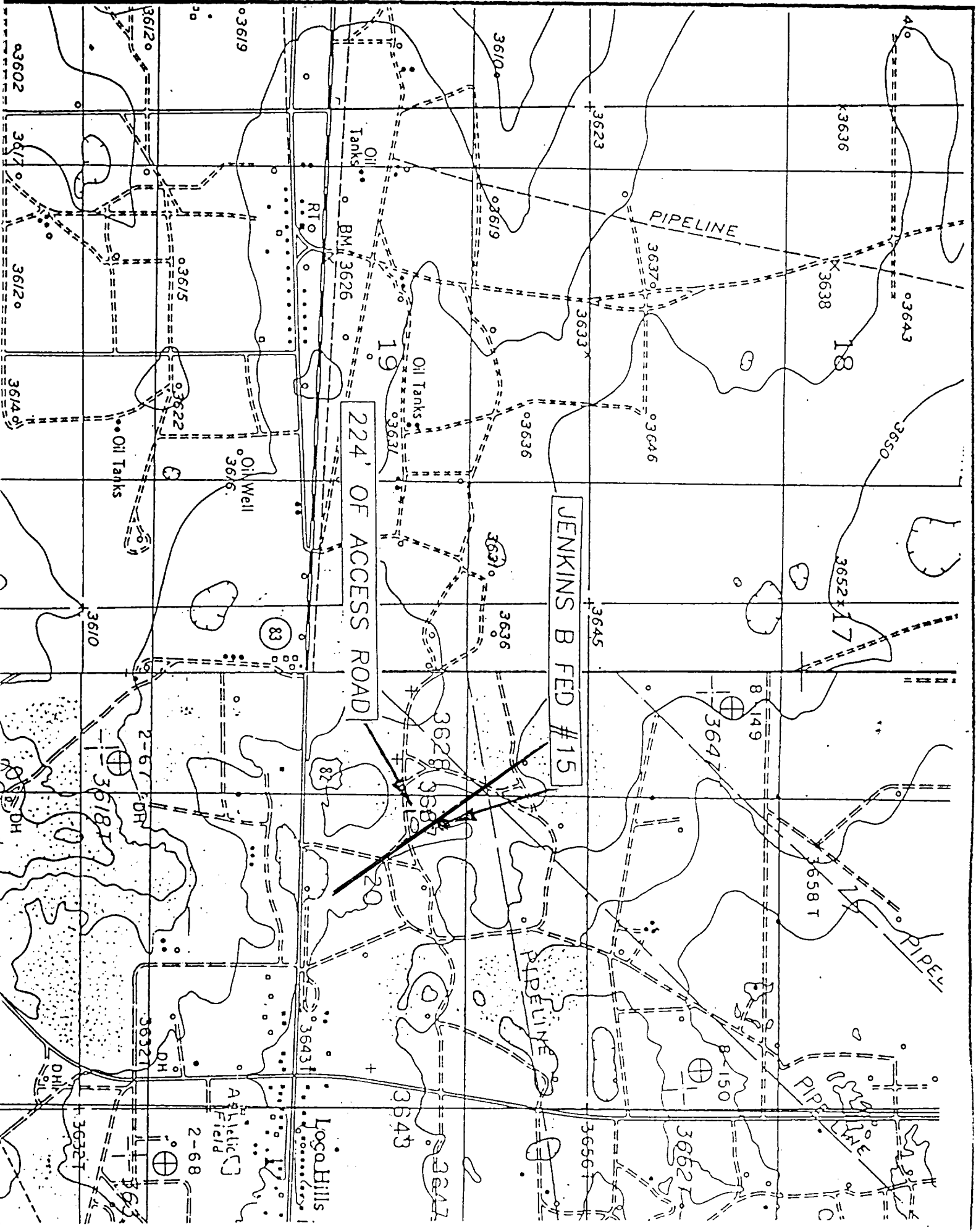
Phillips Mack En
029342
(00)
3 Marbob
4 McIntyre
029342
3 P265
(00)
9 Mack
Jenkins
Pod. Disc.
13 Jenkins
(00)
Mack
Ener.
9 Mack
046332
6 3 5
4 "B" Belco
8 4
7
7 03428
McIntyre 211400

Anadarko
Pinto Fed.
U-D
Enron
028936
Beeson
Franklin et al
GP II
Andarko
Paint Fed.
1941

Mack Texaco
ETZ St of Te
St.
P52
1 Max
2 A
154
7.1 Mack
W/O
Jun 28. St.

Mack En.
(Sinc.) S
Marbob
Tyler Fed. Mk
McIntyre
9 "A"
8
10
5-H
3-H
2
(Wholly)
Mack En.
Bingham
2-H
4
7
029342H
7
4
1 (00)
Anada
Fig 4
"Woolley"

ARCO
HBP
028936
Anadarko
Mustang
Fed.
En
GP II
Ener. et al
028936
3
(Wax
DWC



[illegible]



NEW MEXICO ENERGY, MINERALS and NATURAL RESOURCES DEPARTMENT

GARY E. JOHNSON

Governor

BETTY RIVERA

Cabinet Secretary

Lori Wrotenbery

Director

Oil Conservation Division

September 10, 2002

Mack Energy Corporation
P. O. Box 960
Artesia, New Mexico 88211-0960
Attention: Crissa D. Carter
ccarter@pvtnetworks.net

Telefax No. (505) 746-2362

Administrative Order NSL-4775 (SD)

Dear Ms. Carter:

Reference is made to the following: (i) your application dated August 15, 2002 (*application reference No. pKRV0-223248410*), which was received by the New Mexico Oil Conservation Division ("Division") in Santa Fe on August 19, 2002; and (ii) the Division's records in Santa Fe: all concerning Mack Energy Corporation's ("Mack Energy") request for an unorthodox infill oil well location within an existing standard 40-acre oil spacing and proration unit comprising the SE/4 NW/4 (Unit F) of Section 20, Township 17 South, Range 30 East, NMPM, Loco Hills-Paddock Pool (96718), Eddy County, New Mexico.

This 40-acre unit is currently dedicated to the following described Mack Energy operated wells:

- (i) Jenkins "B" Federal Well No. 4 (API No. 30-015-04231), located at a standard oil well location 1650 feet from the North and West lines of Section 20;
- (ii) Jenkins "B" Federal Well No. 8 (API No. 30-015-29388), located at a standard oil well location 2310 feet from the North line and 1650 feet from the West line of Section 20; and
- (iii) Jenkins "B" Federal Well No. 12 (API No. 30-015-31559), located at a standard oil well location 2310 feet from the North and West lines of Section 20.

This application has been duly filed under the provisions of Division Rule 104.F, revised by Division Order No. R-11231, issued by the New Mexico Oil Conservation Commission in Case No. 12119 on August 12, 1999.

Administrative Order NSL-4775(SD)

Mack Energy Corporation

September 10, 2002

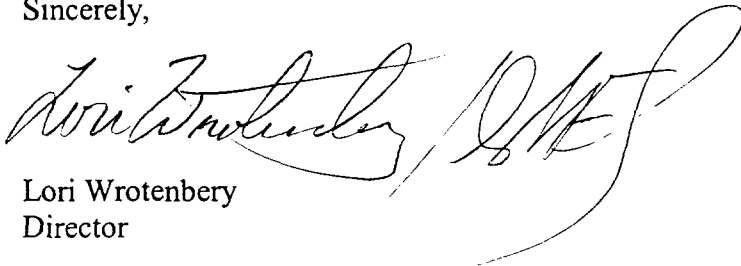
Page 2

By the authority granted me under the provisions of Division Rule 104.F (2), the following described well to be drilled at an unorthodox infill oil well location within the subject unit is hereby approved:

**Jenkins "B" Federal Well No. 15
1650' FNL & 2370' FWL.**

Further, the three existing Jenkins "B" Federal Wells No. 4, 8, and 12 and the proposed Jenkins "B" Federal Well No. 15 are to be simultaneously dedicated to the subject 40-acre oil spacing and proration unit.

Sincerely,

A handwritten signature in cursive script, appearing to read "Lori Wrotenbery", followed by a large, stylized flourish or initial.

Lori Wrotenbery
Director

LW/MES/kv

cc: New Mexico Oil Conservation Division - Artesia
U. S. Bureau of Land Management - Carlsbad