

DATE 11/26/02	SUSPENSE 12/16/02	ENGINEER	LOGGED IN KW	TYPE NSL	APP NO. 233626682
---------------	-------------------	----------	--------------	----------	-------------------

ABOVE THIS LINE FOR DIVISION USE ONLY

NEW MEXICO OIL CONSERVATION DIVISION

- Engineering Bureau -

1220 South St. Francis Drive, Santa Fe, NM 87505



ADMINISTRATIVE APPLICATION CHECKLIST

THIS CHECKLIST IS MANDATORY FOR ALL ADMINISTRATIVE APPLICATIONS FOR EXCEPTIONS TO DIVISION RULES AND REGULATIONS WHICH REQUIRE PROCESSING AT THE DIVISION LEVEL IN SANTA FE

Application Acronyms:

[NSL-Non-Standard Location] [NSP-Non-Standard Proration Unit] [SD-Simultaneous Dedication]
 [DHC-Downhole Commingling] [CTB-Lease Commingling] [PLC-Pool/Lease Commingling]
 [PC-Pool Commingling] [OLS - Off-Lease Storage] [OLM-Off-Lease Measurement]
 [WFX-Waterflood Expansion] [PMX-Pressure Maintenance Expansion]
 [SWD-Salt Water Disposal] [IPI-Injection Pressure Increase]
 [EOR-Qualified Enhanced Oil Recovery Certification] [PPR-Positive Production Response]

[1] TYPE OF APPLICATION - Check Those Which Apply for [A]

[A] Location - Spacing Unit - Simultaneous Dedication

☒ NSL ☐ NSP ☐ SD

Check One Only for [B] or [C]

[B] Commingling - Storage - Measurement

☐ DHC ☐ CTB ☐ PLC ☐ PC ☐ OLS ☐ OLM

[C] Injection - Disposal - Pressure Increase - Enhanced Oil Recovery

☐ WFX ☐ PMX ☐ SWD ☐ IPI ☐ EOR ☐ PPR

[D] Other: Specify _____

[2] NOTIFICATION REQUIRED TO: - Check Those Which Apply, or Does Not Apply

[A] ☐ Working, Royalty or Overriding Royalty Interest Owners[B] ☐ Offset Operators, Leaseholders or Surface Owner[C] ☐ Application is One Which Requires Published Legal Notice
 [D] ☐ Notification and/or Concurrent Approval by BLM or SLO
 U.S. Bureau of Land Management - Commissioner of Public Lands, State Land Office
[E] ☐ For all of the above, Proof of Notification or Publication is Attached, and/or,[F] ☐ Waivers are Attached

[3] SUBMIT ACCURATE AND COMPLETE INFORMATION REQUIRED TO PROCESS THE TYPE OF APPLICATION INDICATED ABOVE.

[4] CERTIFICATION: I hereby certify that the information submitted with this application for administrative approval is accurate and complete to the best of my knowledge. I also understand that no action will be taken on this application until the required information and notifications are submitted to the Division.

Note: Statement must be completed by an individual with managerial and/or supervisory capacity.

 Cy Cowan
 Print or Type Name

Signature

 Regulatory Agent
 Title

 11/26/02
 Date

e-mail Address

MARTIN YATES, III
1912 - 1985
FRANK W. YATES
1936 - 1986



105 SOUTH FOURTH STREET
ARTESIA, NEW MEXICO 88210-2118
TELEPHONE (505) 748-1471

S. P. YATES
CHAIRMAN OF THE BOARD
JOHN A. YATES
PRESIDENT
PEYTON YATES
EXECUTIVE VICE PRESIDENT
RANDY G. PATTERSON
SECRETARY
DENNIS G. KINSEY
TREASURER

November 26, 2002

Mr. Michael Stogner
New Mexico Oil Conservation Division
1220 South Saint Francis Drive
Santa Fe, New Mexico 87505

Certified Mail
Return Receipt Request

RE: Application for Vandiver "AIM" Com. #1
2162' FNL and 660' FWL
Section 17, T18S-R26E
Eddy County, New Mexico

Dear Mr. Stogner

Yates Petroleum Corporation respectfully requests administrative approval for the captioned Wildcat Abo well.

The Vandiver "AIM" Com. #1 is to be recompleted to the Wildcat Abo Formation.

Yates Petroleum Corporation is the offset operator to the south therefore Yates requests administrative approval for this unorthodox location at your earliest convenience. We also wish this approval to cover the following formations being the Wildcat Cisco, Wildcat Wolfcamp, Wildcat Strawn and Wildcat Canyon.


Enclosed please find our Administration Application Checklist and supporting information.

Should you need anything further please advise.

Thank you,

Very truly yours,

YATES PETROLEUM CORPORATION


Cy Cowan
Regulatory Agent

/cyc

*Dan - Per Oil
Dillon Sullivan Goss*

NEW MEXICO OIL CONSERVATION DIVISION

SUBMITTAL GUIDELINES FOR ADMINISTRATIVE APPROVAL
OF NON-STANDARD LOCATION APPLICATIONS

- I. If the well is located on Federal or Indian Lands, the Federal Surface Management Agency must be notified and an on-site inspection conducted prior to filing the application. If an Application for Permit to drill or a Notice of Staking has been prepared, a copy must be submitted.
- II. *N/A Well is Located on Private Surface.*
Completed C-102 showing the well location, proration unit, leases within the unit and other required information. *See attached C-102*
- III. Land plat showing offset operators and working interest owners and any offsetting wells producing from the same pool or formation. *See Attached Land Plat AND C-102's*
 - A. This information may be shown on the topo map if it does not impair the readability of the map.
 - B. The operator should certify that the information is current and correct. *This information is correct.*
- IV. Original or clear copy of topographic map, preferably 7.5 minute quad, showing contours and other mapped features impacting the location, with the following information marked thereon (In order to be able to adequately show all of the necessary surface conditions it may be necessary to enlarge the relevant portion of the topo map to provide room for detail):
 - A. The proposed well location and proration unit; *See PLAT*
 - B. An outline of the orthodox drilling windows as provided in the applicable rules for the subject application; *See PLAT*
 - C. The location of any wells to any formation within the area of the proration unit and a statement as to whether an existing pad can be used to drill the proposed well; *No Wells in Proration Unit. Existing PAD will be used for this re-entry*
- V. An enlargement of the topo map showing the subject area with the applicable additional information:
 - A. Terrain features not shown on the map which make an orthodox location unusable; *See Topo*
 - B. Proposed access roads and pipelines if they affect the location selection; *N/A*
 - C. The location of any surface uses which prevent use of a legal location;
This well was drilled in a cultivated field. Surface owner wanted well here so not to interfere as much with farming

D. The location of any archeological sites identified in the archeological survey; *N/A*

E. The location and nature of any other surface conditions which prevent the use of an orthodox location. *See 'C' Above*

VI. If archeological sites are a reason for the unorthodox location request, a copy of the archeological survey, or a summary, identifying sites which cannot be disturbed or which must have any disturbance mitigated. In addition, the location of such areas should be marked on the enlarged topo so they can be clearly identified. *N/A*

VII. A narrative report of any on-site inspection of the potential locations. If such on-site has resulted in elimination of legal locations due to surface conditions, such information should also be noted on the enlarged topo. *This information is Available.*

VIII. A statement of why directional drilling to reach a legal bottom-hole location is not feasible. *N/A Well is ALready drilled*

IX. An affidavit that notice has been sent to all parties entitled thereto, under the Divisions Rules and Regulations with return receipt cards showing date of receipt of notice. *N/A*

Submit to Appropriate
District Office
State Lease - 4 copies
Fee Lease - 3 copies

State of New Mexico
Energy, Minerals and Natural Resources Department

Form C-102
Revised 1-1-89

OIL CONSERVATION DIVISION

P.O. Box 2088
Santa Fe, New Mexico 87504-2088

DISTRICT I
P.O. Box 1980, Hobbs, NM 88240

DISTRICT II
P.O. Drawer DD, Artesia, NM 88210

DISTRICT III
1000 Rio Brazos Rd., Aztec, NM 87410

WELL LOCATION AND ACREAGE DEDICATION PLAT

All Distances must be from the outer boundaries of the section

Operator YATES PETROLEUM CORPORATION			Lease VANDIVER AIM COM		Well No. 1
Unit Letter E	Section 17	Township 18 SOUTH	Range 26 EAST	County EDDY COUNTY, NM	
Actual Footage Location of Well: 2162 feet from the NORTH line and 660 feet from the WEST line					
Ground level Elev. 3401.	Producing Formation Morrow		Pool Undes. Morrow	Dedicated Acreage: 320 Acres	

1. Outline the acreage dedicated to the subject well by colored pencil or hachure marks on the plat below.

2. If more than one lease is dedicated to the well, outline each and identify the ownership thereof (both as to working interest and royalty).

3. If more than one lease of different ownership is dedicated to the well, have the interest of all owners been consolidated by communitization, unitization, force-pooling, etc.?

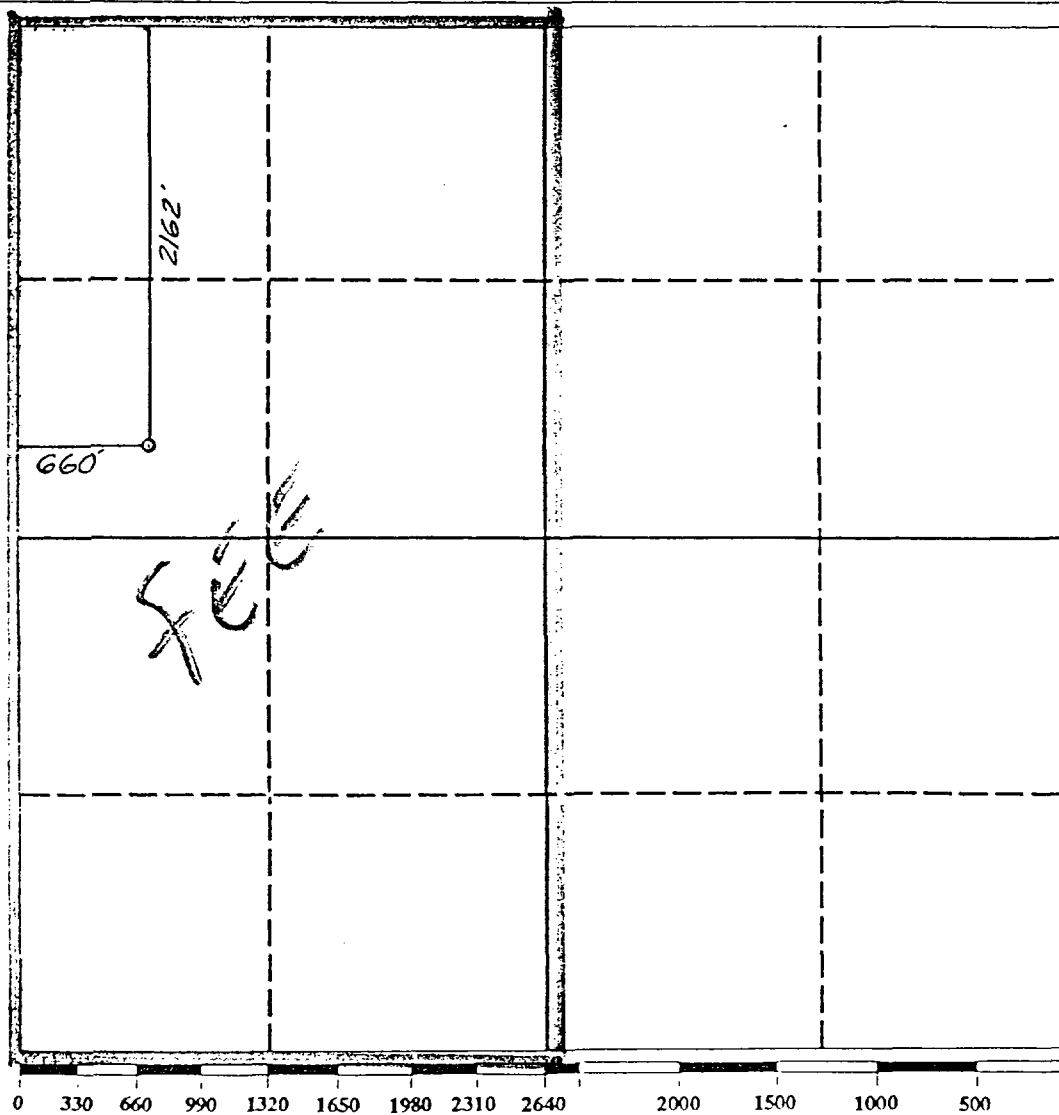
☐ Yes

☒ No

If answer is "yes" type of consolidation _____

If answer is "no" list the owners and tract descriptions which have actually been consolidated. (Use reverse side of this form if necessary.) _____

No allowable will be assigned to the well until all interests have been consolidated (by communitization, unitization, forced-pooling, or otherwise) or until a non-standard unit, eliminating such interest, has been approved by the Division.



OPERATOR CERTIFICATION

I hereby certify that the information contained herein is true and complete to the best of my knowledge and belief.

Signature

Printed Name

Position

Company

Date

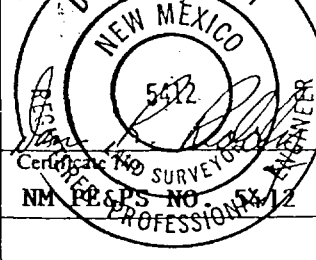
SURVEYOR CERTIFICATION

I hereby certify that the well location shown on this plat was plotted from field notes of actual surveys made by me or under my supervision, and that the same is true and correct to the best of my knowledge and belief.

Date Surveyed

JUNE 25, 1992

Signature of Professional Surveyor



Submit to Appropriate
District Office
State Lease - 4 copies
Fee Lease - 3 copies

State of New Mexico
Energy, Minerals and Natural Resources Department

Form C-102
Revised 1-1-89

OIL CONSERVATION DIVISION

P.O. Box 2088
Santa Fe, New Mexico 87504-2088

DISTRICT I
P.O. Box 1980, Hobbs, NM 88240

DISTRICT II
P.O. Drawer DD, Artesia, NM 88210

DISTRICT III
1000 Rio Brazos Rd., Aztec, NM 87410

WELL LOCATION AND ACREAGE DEDICATION PLAT

All Distances must be from the outer boundaries of the section

Operator YATES PETROLEUM CORPORATION			Lease VANDIVER AIM COM		Well No. 1
Unit Letter E	Section 17	Township 18 SOUTH	Range 26 EAST	County EDDY COUNTY, NM	
Actual Footage Location of Well: 2162 feet from the NORTH line and 660 feet from the WEST line					
Ground level Elev. 3401.		Producing Formation Morrow		Pool Undes. Morrow	Dedicated Acreage: 320 Acres

1. Outline the acreage dedicated to the subject well by colored pencil or hachure marks on the plat below.

2. If more than one lease is dedicated to the well, outline each and identify the ownership thereof (both as to working interest and royalty).

3. If more than one lease of different ownership is dedicated to the well, have the interest of all owners been consolidated by communitization, unitization, force-pooling, etc.?

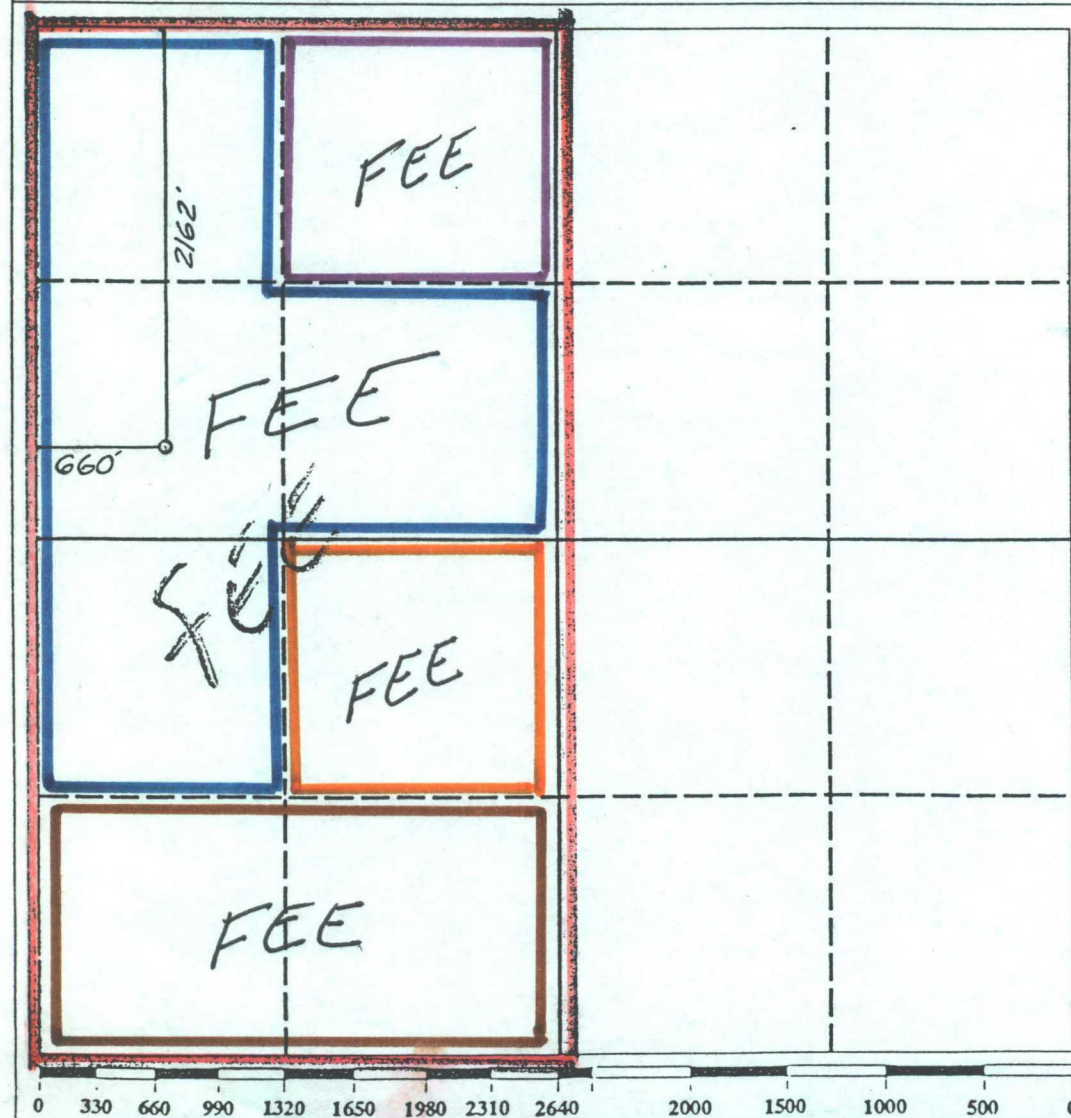
☐ Yes

☒ No

If answer is "yes" type of consolidation _____

If answer is "no" list the owners and tract descriptions which have actually been consolidated. (Use reverse side of this form if necessary.) _____

No allowable will be assigned to the well until all interests have been consolidated (by communitization, unitization, forced-pooling, or otherwise) or until a non-standard unit, eliminating such interest, has been approved by the Division.



OPERATOR CERTIFICATION

I hereby certify that the information contained herein in true and complete to the best of my knowledge and belief.

Signature

Ken Beardemphl

Printed Name

KEN BEARDEMPHL

Position

LANDMAN

Company

YATES PET. CORP.

Date

6-26-92

SURVEYOR CERTIFICATION

I hereby certify that the well location shown on this plat was plotted from field notes of actual surveys made by me or under my supervision, and that the same is true and correct to the best of my knowledge and belief.

Date Surveyed

JUNE 25, 1992

Signature of State Registered Professional Surveyor

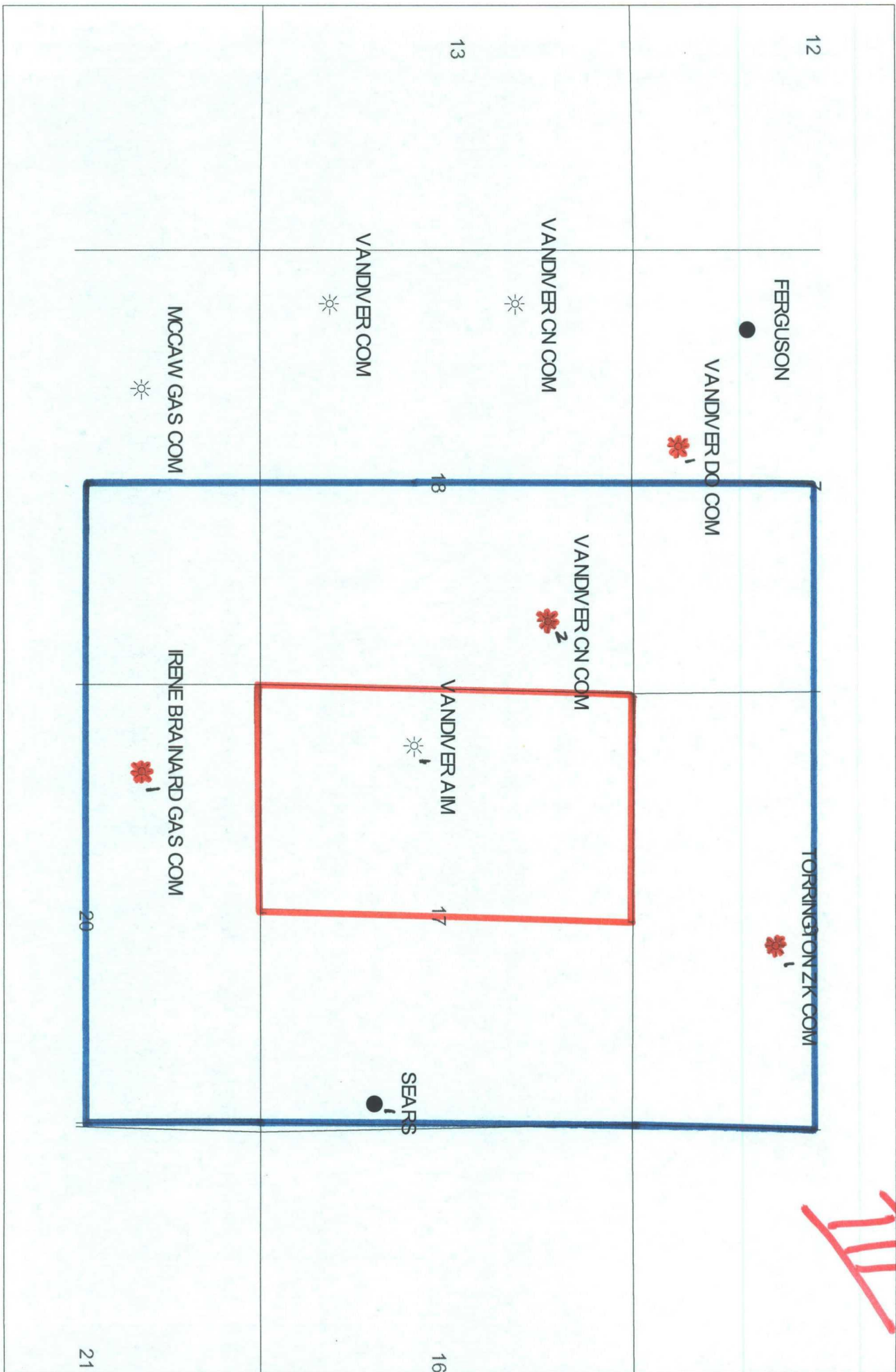


[illegible]

PI/Dwights PLUS on CD Map Report

Date: 8/26/2002
Time: 2:30 PM

III



District I

1625 N. French Dr., Hobbs, NM 88240

District II

811 South First, Artesia, NM 88210

District III

1000 Rio Brazos Rd., Aztec, NM 87410

District IV

1220 S. St. Francis Dr., Santa Fe, NM 87505

State of New Mexico
Energy, Minerals & Natural Resources DepartmentOIL CONSERVATION DIVISION
1220 South St. Francis Dr.
Santa Fe, NM 87505

Form C-102

Revised August 15, 2000

Submit to Appropriate District Office
State Lease - 4 Copies
Fee Lease - 3 Copies☐ AMENDED REPORT

WELL LOCATION AND ACREAGE DEDICATION PLAT

¹ API Number 30-015-27028	² Pool Code	³ Pool Name Wildcat Abo
⁴ Property Code	⁵ Property Name VANDIVER AIM	⁶ Well Number 1
⁷ OGRID No. 025575	⁸ Operator Name Yates Petroleum Corporation	⁹ Elevation 3404'

¹⁰ Surface Location

UL or lot no. E	Section 17	Township 18S	Range 26E	Lot Idn	Feet from the 2162	North/South line North	Feet from the 660	East/West line West	County Eddy
---------------------------	----------------------	------------------------	---------------------	---------	------------------------------	----------------------------------	-----------------------------	-------------------------------	-----------------------

¹¹ Bottom Hole Location If Different From Surface

UL or lot no.	Section	Township	Range	Lot Idn	Feet from the	North/South line	Feet from the	East/West line	County
---------------	---------	----------	-------	---------	---------------	------------------	---------------	----------------	--------

¹² Dedicated Acres 40	¹³ Joint or Infill	¹⁴ Consolidation Code	¹⁵ Order No.
--	-------------------------------	----------------------------------	-------------------------

NO ALLOWABLE WILL BE ASSIGNED TO THIS COMPLETION UNTIL ALL INTERESTS HAVE BEEN CONSOLIDATED OR A
NON-STANDARD UNIT HAS BEEN APPROVED BY THE DIVISION

¹⁶ 	¹⁷ OPERATOR CERTIFICATION I hereby certify that the information contained herein is true and complete to the best of my knowledge and belief. Signature Cy Cowan Printed Name Regulatory Agent Title 8/26/2002 Date			
	¹⁸ SURVEYOR CERTIFICATION I hereby certify that the well location shown on this plat was plotted from field notes of actual surveys made by me or under my supervision, and that the same is true and correct to the best of my belief. REFER TO ORIGINAL PLAT Date of Survey Signature and Seal of Professional Surveyor:			
	Certificate Number			

District I
1625 N. French Dr., Hobbs, NM 88240
District II
811 South First, Artesia, NM 88210
District III
1000 Rio Brazos Rd., Aztec, NM 87410
District IV
1220 S. St. Francis Dr., Santa Fe, NM 87505

State of New Mexico
Energy, Minerals & Natural Resources Department

OIL CONSERVATION DIVISION
1220 South St. Francis Dr.
Santa Fe, NM 87505

Form C-102
Revised August 15, 2000

Submit to Appropriate District Office
State Lease - 4 Copies
Fee Lease - 3 Copies

☐ AMENDED REPORT

WELL LOCATION AND ACREAGE DEDICATION PLAT

¹ API Number 30-015-27028	² Pool Code	³ Pool Name Wildcat Canyon
⁴ Property Code	⁵ Property Name VANDIVER AIM	⁶ Well Number 1
⁷ OGRID No. 025575	⁸ Operator Name Yates Petroleum Corporation	⁹ Elevation 3404'

¹⁰ Surface Location

UL or lot no. E	Section 17	Township 18S	Range 26E	Lot Idn	Feet from the 2162	North/South line North	Feet from the 660	East/West line West	County Eddy
---------------------------	----------------------	------------------------	---------------------	---------	------------------------------	----------------------------------	-----------------------------	-------------------------------	-----------------------

¹¹ Bottom Hole Location If Different From Surface

UL or lot no.	Section	Township	Range	Lot Idn	Feet from the	North/South line	Feet from the	East/West line	County
---------------	---------	----------	-------	---------	---------------	------------------	---------------	----------------	--------

¹² Dedicated Acres 320	¹³ Joint or Infill	¹⁴ Consolidation Code	¹⁵ Order No.
---	-------------------------------	----------------------------------	-------------------------

NO ALLOWABLE WILL BE ASSIGNED TO THIS COMPLETION UNTIL ALL INTERESTS HAVE BEEN CONSOLIDATED OR A NON-STANDARD UNIT HAS BEEN APPROVED BY THE DIVISION

	<p>¹⁷ OPERATOR CERTIFICATION <i>I hereby certify that the information contained herein is true and complete to the best of my knowledge and belief.</i></p> <p>Signature Cy Cowan Printed Name Regulatory Agent Title 8/26/2002 Date</p>
	<p>¹⁸ SURVEYOR CERTIFICATION <i>I hereby certify that the well location shown on this plat was plotted from field notes of actual surveys made by me or under my supervision, and that the same is true and correct to the best of my belief.</i></p> <p>REFER TO ORIGINAL PLAT</p> <p>Date of Survey Signature and Seal of Professional Surveyor:</p>
	Certificate Number

District I
1625 N. French Dr., Hobbs, NM 88240

District II
811 South First, Artesia, NM 88210

District III
1000 Rio Brazos Rd., Aztec, NM 87410

District IV
1220 S. St. Francis Dr., Santa Fe, NM 87505

State of New Mexico
Energy, Minerals & Natural Resources Department

OIL CONSERVATION DIVISION
1220 South St. Francis Dr.
Santa Fe, NM 87505

Form C-102
Revised August 15, 2000

Submit to Appropriate District Office
State Lease - 4 Copies
Fee Lease - 3 Copies

☐ AMENDED REPORT

WELL LOCATION AND ACREAGE DEDICATION PLAT

¹ API Number 30-015-27028	² Pool Code	³ Pool Name Wildcat Cisco
⁴ Property Code	⁵ Property Name VANDIVER AIM	⁶ Well Number 1
⁷ OGRID No. 025575	⁸ Operator Name Yates Petroleum Corporation	⁹ Elevation 3404'

¹⁰ Surface Location

UL or lot no. E	Section 17	Township 18S	Range 26E	Lot Idn	Feet from the 2162	North/South line North	Feet from the 660	East/West line West	County Eddy
---------------------------	----------------------	------------------------	---------------------	---------	------------------------------	----------------------------------	-----------------------------	-------------------------------	-----------------------

¹¹ Bottom Hole Location If Different From Surface

UL or lot no.	Section	Township	Range	Lot Idn	Feet from the	North/South line	Feet from the	East/West line	County
---------------	---------	----------	-------	---------	---------------	------------------	---------------	----------------	--------

¹² Dedicated Acres 320	¹³ Joint or Infill	¹⁴ Consolidation Code	¹⁵ Order No.
---	-------------------------------	----------------------------------	-------------------------

NO ALLOWABLE WILL BE ASSIGNED TO THIS COMPLETION UNTIL ALL INTERESTS HAVE BEEN CONSOLIDATED OR A
NON-STANDARD UNIT HAS BEEN APPROVED BY THE DIVISION

	¹⁷ OPERATOR CERTIFICATION <i>I hereby certify that the information contained herein is true and complete to the best of my knowledge and belief.</i>
	Signature
	Cy Cowan Printed Name
	Regulatory Agent Title
	8/26/2002 Date
	¹⁸ SURVEYOR CERTIFICATION <i>I hereby certify that the well location shown on this plat was plotted from field notes of actual surveys made by me or under my supervision, and that the same is true and correct to the best of my belief.</i>
	REFER TO ORIGINAL PLAT
	Date of Survey
	Signature and Seal of Professional Surveyor:
	Certificate Number

District I
1625 N. French Dr., Hobbs, NM 88240

District II
811 South First, Artesia, NM 88210

District III
1000 Rio Brazos Rd., Aztec, NM 87410

District IV
1220 S. St. Francis Dr., Santa Fe, NM 87505

State of New Mexico
Energy, Minerals & Natural Resources Department

OIL CONSERVATION DIVISION
1220 South St. Francis Dr.
Santa Fe, NM 87505

Form C-102
Revised August 15, 2000

Submit to Appropriate District Office
State Lease - 4 Copies
Fee Lease - 3 Copies

☐ AMENDED REPORT

WELL LOCATION AND ACREAGE DEDICATION PLAT

¹ API Number 30-015-27028	² Pool Code	³ Pool Name Wildcat Wolf Camp
⁴ Property Code	⁵ Property Name VANDIVER AIM	⁶ Well Number 1
⁷ OGRID No. 025575	⁸ Operator Name Yates Petroleum Corporation	⁹ Elevation 3404'

¹⁰ Surface Location

UL or lot no. E	Section 17	Township 18S	Range 26E	Lot Idn	Feet from the 2162	North/South line North	Feet from the 660	East/West line West	County Eddy
---------------------------	----------------------	------------------------	---------------------	---------	------------------------------	----------------------------------	-----------------------------	-------------------------------	-----------------------

¹¹ Bottom Hole Location If Different From Surface

UL or lot no.	Section	Township	Range	Lot Idn	Feet from the	North/South line	Feet from the	East/West line	County
---------------	---------	----------	-------	---------	---------------	------------------	---------------	----------------	--------

¹² Dedicated Acres 40	¹³ Joint or Infill	¹⁴ Consolidation Code	¹⁵ Order No.
--	-------------------------------	----------------------------------	-------------------------

NO ALLOWABLE WILL BE ASSIGNED TO THIS COMPLETION UNTIL ALL INTERESTS HAVE BEEN CONSOLIDATED OR A NON-STANDARD UNIT HAS BEEN APPROVED BY THE DIVISION

¹⁶ 	¹⁷ OPERATOR CERTIFICATION <i>I hereby certify that the information contained herein is true and complete to the best of my knowledge and belief.</i> Signature Cy Cowan Printed Name Regulatory Agent Title 8/26/2002 Date
	¹⁸ SURVEYOR CERTIFICATION <i>I hereby certify that the well location shown on this plat was plotted from field notes of actual surveys made by me or under my supervision, and that the same is true and correct to the best of my belief.</i> REFER TO ORIGINAL PLAT Date of Survey Signature and Seal of Professional Surveyor: Certificate Number

District I

1625 N. French Dr., Hobbs, NM 88240

District II

811 South First, Artesia, NM 88210

District III

1000 Rio Brazos Rd., Aztec, NM 87410

District IV

1220 S. St. Francis Dr., Santa Fe, NM 87505

State of New Mexico
Energy, Minerals & Natural Resources DepartmentOIL CONSERVATION DIVISION
1220 South St. Francis Dr.
Santa Fe, NM 87505

Form C-102

Revised August 15, 2000

Submit to Appropriate District Office
State Lease - 4 Copies
Fee Lease - 3 Copies☐ AMENDED REPORT

WELL LOCATION AND ACREAGE DEDICATION PLAT

¹ API Number 30-015-27028	² Pool Code	³ Pool Name Wildcat Wolf Camp
⁴ Property Code	⁵ Property Name VANDIVER AIM	⁶ Well Number 1
⁷ OGRID No. 025575	⁸ Operator Name Yates Petroleum Corporation	⁹ Elevation 3404'

¹⁰ Surface Location

UL or lot no. E	Section 17	Township 18S	Range 26E	Lot Idn	Feet from the 2162	North/South line North	Feet from the 660	East/West line West	County Eddy
---------------------------	----------------------	------------------------	---------------------	---------	------------------------------	----------------------------------	-----------------------------	-------------------------------	-----------------------

¹¹ Bottom Hole Location If Different From Surface

UL or lot no.	Section	Township	Range	Lot Idn	Feet from the	North/South line	Feet from the	East/West line	County
---------------	---------	----------	-------	---------	---------------	------------------	---------------	----------------	--------

¹² Dedicated Acres 320	¹³ Joint or Infill	¹⁴ Consolidation Code	¹⁵ Order No.
---	-------------------------------	----------------------------------	-------------------------

NO ALLOWABLE WILL BE ASSIGNED TO THIS COMPLETION UNTIL ALL INTERESTS HAVE BEEN CONSOLIDATED OR A
NON-STANDARD UNIT HAS BEEN APPROVED BY THE DIVISION

	¹⁷ OPERATOR CERTIFICATION <i>I hereby certify that the information contained herein is true and complete to the best of my knowledge and belief.</i>	
	Signature	
	Cy Cowan Printed Name	
	Regulatory Agent Title	
	¹⁸ SURVEYOR CERTIFICATION <i>I hereby certify that the well location shown on this plat was plotted from field notes of actual surveys made by me or under my supervision, and that the same is true and correct to the best of my belief.</i>	
	REFER TO ORIGINAL PLAT	
	Date of Survey	
	Signature and Seal of Professional Surveyor:	
	Certificate Number	

District I
1625 N. French Dr., Hobbs, NM 88240

District II
811 South First, Artesia, NM 88210

District III
1000 Rio Brazos Rd., Aztec, NM 87410

District IV
1220 S. St. Francis Dr., Santa Fe, NM 87505

State of New Mexico
Energy, Minerals & Natural Resources Department

OIL CONSERVATION DIVISION
1220 South St. Francis Dr.
Santa Fe, NM 87505

Form C-102
Revised August 15, 2000

Submit to Appropriate District Office
State Lease - 4 Copies
Fee Lease - 3 Copies

☐ AMENDED REPORT

WELL LOCATION AND ACREAGE DEDICATION PLAT

¹ API Number 30-015-27028	² Pool Code	³ Pool Name Wildcat Strawn
⁴ Property Code	⁵ Property Name VANDIVER AIM	⁶ Well Number 1
⁷ OGRID No. 025575	⁸ Operator Name Yates Petroleum Corporation	⁹ Elevation 3404'

¹⁰ Surface Location

UL or lot no. E	Section 17	Township 18S	Range 26E	Lot Idn	Feet from the 2162	North/South line North	Feet from the 660	East/West line West	County Eddy
---------------------------	----------------------	------------------------	---------------------	---------	------------------------------	----------------------------------	-----------------------------	-------------------------------	-----------------------

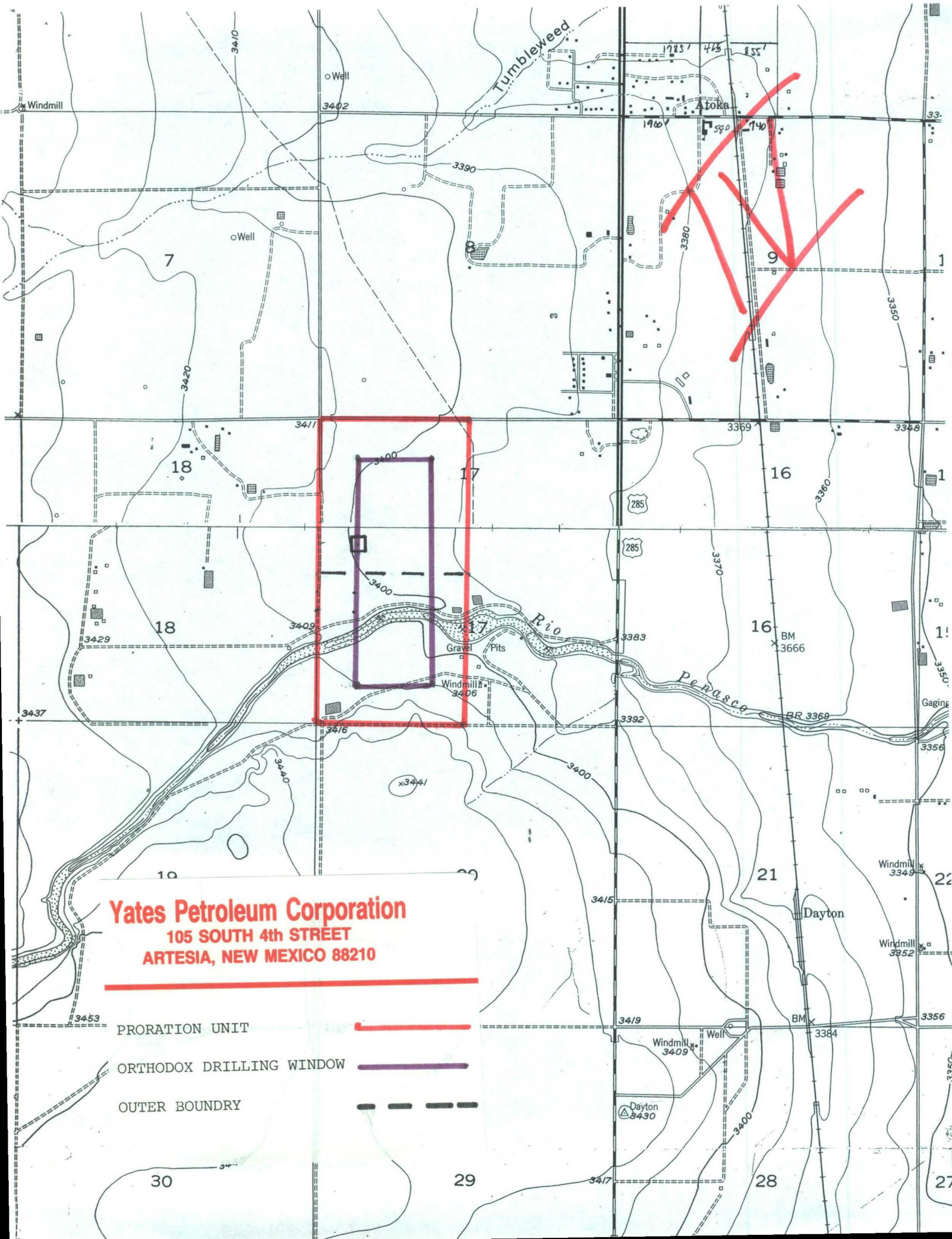
¹¹ Bottom Hole Location If Different From Surface

UL or lot no.	Section	Township	Range	Lot Idn	Feet from the	North/South line	Feet from the	East/West line	County
---------------	---------	----------	-------	---------	---------------	------------------	---------------	----------------	--------

¹² Dedicated Acres 320	¹³ Joint or Infill	¹⁴ Consolidation Code	¹⁵ Order No.
---	-------------------------------	----------------------------------	-------------------------

NO ALLOWABLE WILL BE ASSIGNED TO THIS COMPLETION UNTIL ALL INTERESTS HAVE BEEN CONSOLIDATED OR A
NON-STANDARD UNIT HAS BEEN APPROVED BY THE DIVISION

	¹⁷ OPERATOR CERTIFICATION <i>I hereby certify that the information contained herein is true and complete to the best of my knowledge and belief.</i>	
	Signature	
	Cy Cowan Printed Name	
	Regulatory Agent Title	
	¹⁸ SURVEYOR CERTIFICATION <i>I hereby certify that the well location shown on this plat was plotted from field notes of actual surveys made by me or under my supervision, and that the same is true and correct to the best of my belief.</i>	
	REFER TO ORIGINAL PLAT	
	Date of Survey	
	Signature and Seal of Professional Surveyor:	
	Certificate Number	



County, _____

Township _____ Range _____

Township _____ Range _____

Township _____ Range _____

Township _____ Range _____

Form 104—(Four on Township)




25E

26E

6	5	4	3	2	1	6	5	4	3	2	1
7	8	9	10	11	12	7	8	9	10	11	12
18	17	16	15	14	13	18	17	16	15	14	13
19	20	21	22	23	24	19	20	21	22	23	24
30	29	28	27	26	25	30	29	28	27	26	25
31	32	33	34	35	36	31	32	33	34	35	36
6	5	4	3	2	1	6	5	4	3	2	1
7	8	9	10	11	12	7	8	9	10	11	12
18	17	16	15	14	13	18	17	16	15	14	13
19	20	21	22	23	24	19	20	21	22	23	24
30	29	28	27	26	25	30	29	28	27	26	25
31	32	33	34	35	36	31	32	33	34	35	36

18S

19S

 Abaka-Pennsylvanian Gas Pool
 Dayton-Abs
 Dayton-Stam

County, _____

Township _____ Range _____

Township _____ Range _____

Township _____ Range _____

Township _____ Range _____

Form 104—(Four on Township)

6	5	4	3	2	1	6	5	4	3	2	1
7	8	9	10	11	12	7	8	9	10	11	12
18	17	16	15	14	13	18	17	16	15	14	13
19	20	21	22	23	24	19	20	21	22	23	24
30	29	28	27	26	25	30	29	28	27	26	25
31	32	33	34	35	36	31	32	33	34	35	36
6	5	4	3	2	1	6	5	4	3	2	1
7	8	9	10	11	12	7	8	9	10	11	12
18	17	16	15	14	13	18	17	16	15	14	13
19	20	21	22	23	24	19	20	21	22	23	24
30	29	28	27	26	25	30	29	28	27	26	25
31	32	33	34	35	36	31	32	33	34	35	36

Atoka Penn

The Atoka-Pennsylvanian Gas Pool, Eddy County, New Mexico, was created May 5, 1958, and gas proration in this pool became effective July 1, 1961.

A. DEFINITIONS

THE VERTICAL LIMITS of the Atoka-Pennsylvanian Gas Pool shall be the Pennsylvanian formation.

B. WELL LOCATION AND ACREAGE REQUIREMENTS

RULE 2(a). A standard GPU in the Atoka-Pennsylvanian Gas Pool shall be 320 acres.

RULE 2(b). Each well completed or recompleted in the Atoka-Pennsylvanian Gas Pool shall be located in the northwest quarter or the southeast quarter of the section and shall be located no nearer than 990 feet to the outer boundary of the quarter section nor nearer than 330 feet to any governmental quarter-quarter section line; provided, however, that any well which was projected to or completed in said pool prior to June 5, 1959, is excepted from the requirements of this rule.

D. ALLOCATION AND GRANTING OF ALLOWABLES

RULE 5. Acreage is the only proration factor in the Atoka-Pennsylvanian Gas Pool.

SPECIAL RULES AND REGULATIONS FOR THE BLINEBRY OIL AND GAS POOL

The Blinebry Oil and Gas Pool, Lea County, New Mexico was created February 17, 1953, and gas proration in this pool became effective January 1, 1954.

A. DEFINITIONS

THE VERTICAL LIMITS of the Blinebry Oil and Gas Pool shall extend from a point 75 feet above the "Blinebry Marker" to a point 100 feet above the "Tubb Marker." The Blinebry Marker shall be that point encountered at a depth of 5457 feet (elevation 3380, sub-sea datum -2077) and the Tubb Marker shall be that point encountered at a depth of 5921 feet (elevation 3380, sub-sea datum -2541) in the Exxon Corporation State "S" Well No. 20, SW/4 NW/4 of Section 2, Township 22 South, Range 37 East, NMPM, Lea County, New Mexico.