

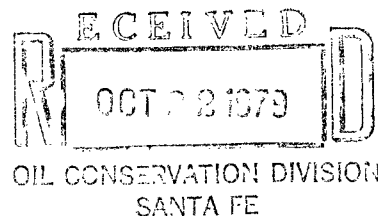
Mobil Oil Corporation

NINE GREENWAY PLAZA-SUITE 2700
HOUSTON, TEXAS 77046

October 15, 1979

State of New Mexico
Energy & Minerals Department
Oil Conservation Division
P. O. Box 2088
Santa Fe, NM 87501

Attn: Mr. Joe A. Ramey



7.01
NON-STANDARD PRORATION UNIT
MOBIL OIL CORPORATION'S
HUGHES FEDERAL COM, WELL #1
WEST LINDRITH GALLUP - DAKOTA OIL POOL
RIO ARRIBA COUNTY, NEW MEXICO

Gentlemen:

Mobil Oil Corporation respectfully requests that a non-standard proration be approved for the Hughes Federal Com, Well #1. The unorthodox size of this proration unit is due to a variation in the legal subdivision of the United States Public Land Surveys. This proposed unit contains 191.25 acres of land described as the SE 1/4 & Lots 3 & 4 of Sec. 7, T24N, R3W Rio Arriba County, New Mexico. Proposed Well No. 1 is to be located 850 feet from the west line and 790 feet from the south line of Section 7.

It is requested that this non-standard unit be approved administratively under the provisions of Rule 3 of the West Lindrith Gallup - Dakota Oil Pool Rules. If the Commission determines that this matter cannot be disposed of administratively, please set it for hearing at the earliest convenient date.

A copy of this letter is being sent, by certified mail, to each operator offsetting this proposed proration unit as their notice of this application and request for their waiver. These offset operators are:

Cotton Petroleum Corporation
2121 South Columbia
Suite 600
Tulsa, OK 74114

Atlantic Richfield Company
P. O. Box 2197
Farmington, NM 87401

A copy of Form C-102 "Well Location and Acreage Allocation Plat" is enclosed.

Very truly yours,

J. A. Morris
J. A. Morris

ADBond/rvs
Attachment

cc: Offset Operators
E&M Dept. Dist. Office - Aztec
USGS - Durango

NEW MEXICO OIL CONSERVATION COMMISSION
WELL LOCATION AND ACREAGE DEDICATION PLAT

Form C-102
Supersedes C-128
Effective 1-1-65

All distances must be from the outer boundaries of the Section.

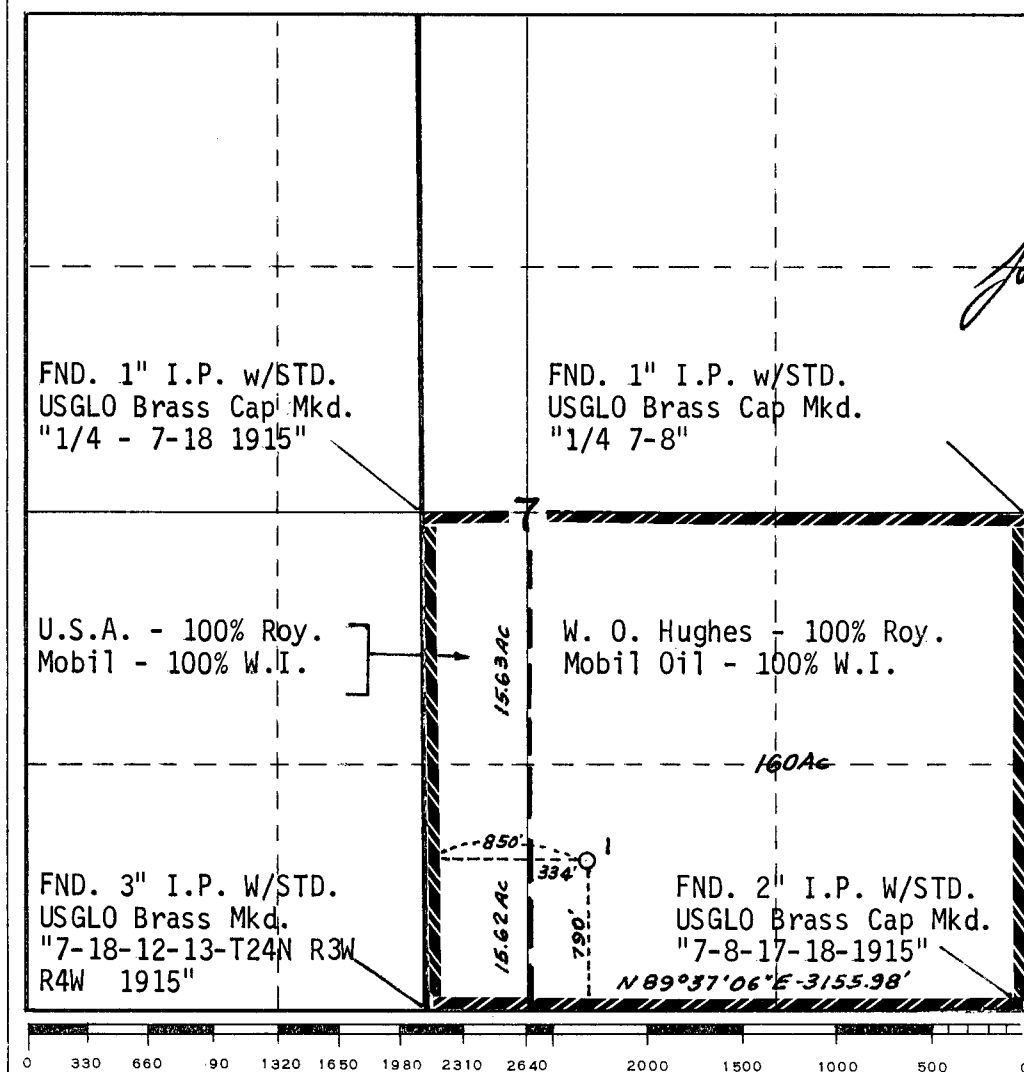
Operator Mobil Oil Corporation		Lease Hughes Federal Com		Well No. 1
Unit Letter 0	Section 7	Township 24N	Range 3W	County Rio Arriba
Actual Footage Location of Well: 790 feet from the South line and 850 feet from the West line				
Ground Level Elev. 6820	Producing Formation Gallup-Dakota	Pool West Lindrith Gallup-Dakota Oil	Dedicated Acreage: 191.25 Acres	

1. Outline the acreage dedicated to the subject well by colored pencil or hachure marks on the plat below.
2. If more than one lease is dedicated to the well, outline each and identify the ownership thereof (both as to working interest and royalty).
3. If more than one lease of different ownership is dedicated to the well, have the interests of all owners been consolidated by communitization, unitization, force-pooling, etc?

☒ Yes ☐ No If answer is "yes," type of consolidation Communitization Pending

If answer is "no," list the owners and tract descriptions which have actually been consolidated. (Use reverse side of this form if necessary.)

No allowable will be assigned to the well until all interests have been consolidated (by communitization, unitization, forced-pooling, or otherwise) or until a non-standard unit, eliminating such interests, has been approved by the Commission.



CERTIFICATION

I hereby certify that the information contained herein is true and complete to the best of my knowledge and belief.

Name
J. A. Morris
Position
Regulatory Engr. Supervisor
Company
Mobil, Houston E&P Division
Date
October 15, 1979

I hereby certify that the well location shown on this plat was plotted from field notes of actual surveys made by me or under my supervision, and that the same is true and correct to the best of my knowledge and belief.

H. A. Carson, Jr.
Date Surveyed
September 13, 1979
Registered Professional Engineer and/or Land Surveyor

H. A. Carson, Jr.

Certificate No.

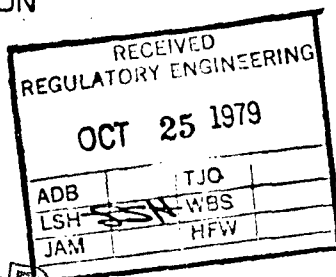
5063



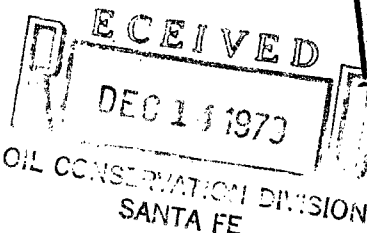
STATE OF NEW MEXICO
ENERGY AND MINERALS DEPARTMENT
OIL CONSERVATION DIVISION

BRUCE KING
GOVERNOR
LARRY KEHOE
SECRETARY

October 22, 1979



Mobil Oil Corporation
Nine Greenway Plaza
Suite 2700
Houston, Texas 77046



Re: Application for Non-Standard
Proration Unit: Hughes Federal
Com Well No. 1, Sec. 7, T-24-N, R-3-W,
W. Lindrith Gallup-Dakota Pool,
Rio Arriba County, New Mexico

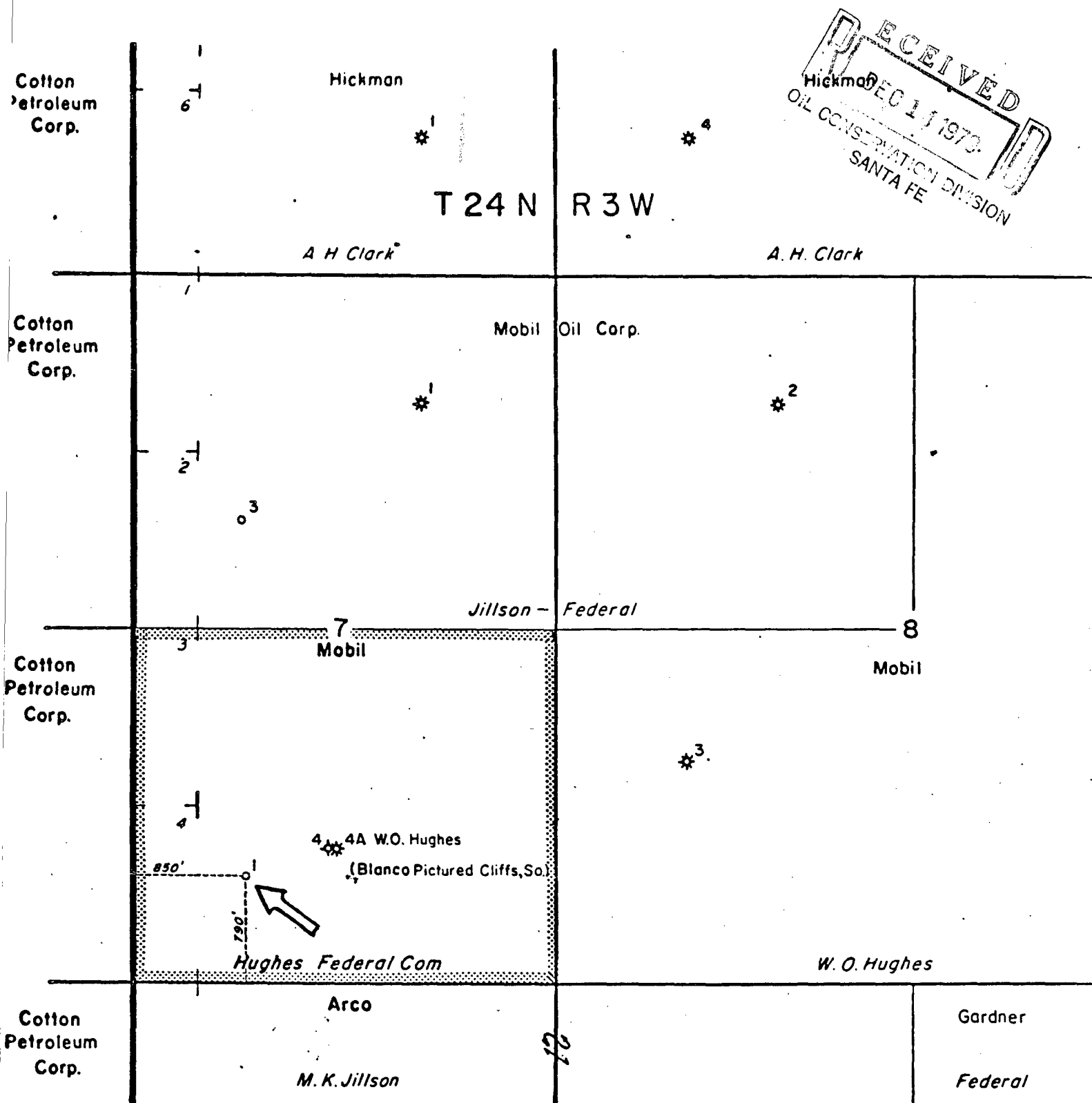
We may not process the subject application for a non-standard proration unit until the required information or plats checked below (is)(are) submitted.

- COPIES
ATTACHED
- ☒ A plat must be submitted clearly showing the ownership of the offsetting leases.
- ☐ A statement must be submitted that offset owners have been notified of the application by certified mail.
- ☐ A plat must be submitted identifying the requested non-standard proration unit and offsetting acreage.
- ☐ The pool(s) or formation(s) for which the non-standard proration unit is requested must be identified.
- ☐ Other:

Very truly yours,

R. L. STAMETS
Technical Support Chief

3 copies of
Plat sent 10/26/79
RLS/dr



RECEIVED
DEC 11 1973
OIL CONSERVATION DIVISION
SANTA FE

Reserve	Permit Depth	LOC. OR DRUG. WELL
Special Instructions		ABANDONED LOC.
		DRY & ABANDONED
		OIL WELL
		ABD. OIL WELL
		GAS WELL
		ABD. GAS WELL
		S.W. DISPOSAL WELL
		GAS INPUT WELL
		WATER INPUT WELL

THE STATE OF TEXAS
COUNTY OF HARRIS

I hereby certify that this plat truly represents conditions as they actually exist on this lease, that said plat which is drawn to the scale indicated hereon, is to the best of my knowledge true and correct, that it accurately shows said lease with all wells on same, that number and locations of said wells are as indicated hereon, and that this plat correctly reflects all pertinent and required data

Mobil Oil Corporation
Houston E&P Division

LEASE Hughes Federal Com

WELL NO 1 DATE 19

DIVISION Houston LEASE NO. NM-36

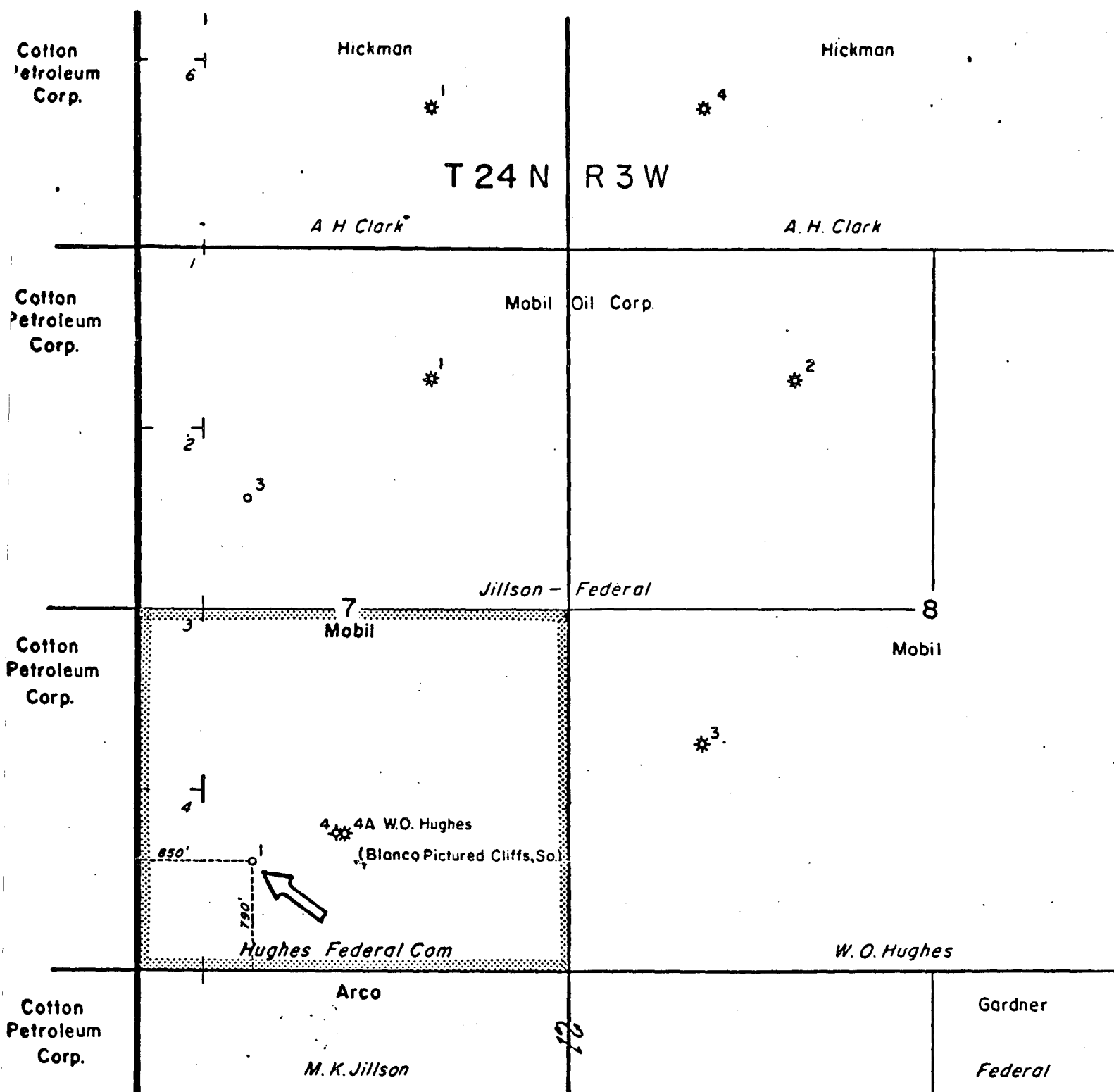
TOTAL ACRES IN LEASE 191.25 ACRES COVERED BY PLAT 191.25

DESCRIPTION S 1/2 of Sec 7

T 24 N - R 3 W

Rio Arriba County, New Mexico

DRAWN <u>T Roy</u>	DATE <u>10-5-79</u>	FIELD <u>West Lindrith</u>
SCALE <u>1"=1000'</u>	FILE NO. <u>94</u>	<u>Gallup-Dakota Oil Pool</u>



Reserve _____	Permit Depth _____	○ LOC. OR DRILG. WELL
Special Instructions _____		⊗ ABANDONED LOC.
		⊕ DRY & ABANDONED
		● OIL WELL
		⊗ ABD. OIL WELL
		⊕ GAS WELL
		⊗ ABD. GAS WELL
		⊕ S.W. DISPOSAL WELL
		⊗ GAS INPUT WELL
		⊕ WATER INPUT WELL

THE STATE OF TEXAS
COUNTY OF HARRIS

I hereby certify that this plat truly represents conditions as they actually exist on this lease, that said plat which is drawn to the scale indicated hereon, is to the best of my knowledge true and correct, that it accurately shows said lease with all wells on same, that number and locations of said wells are as indicated hereon, and that this plat correctly reflects all pertinent and required data.

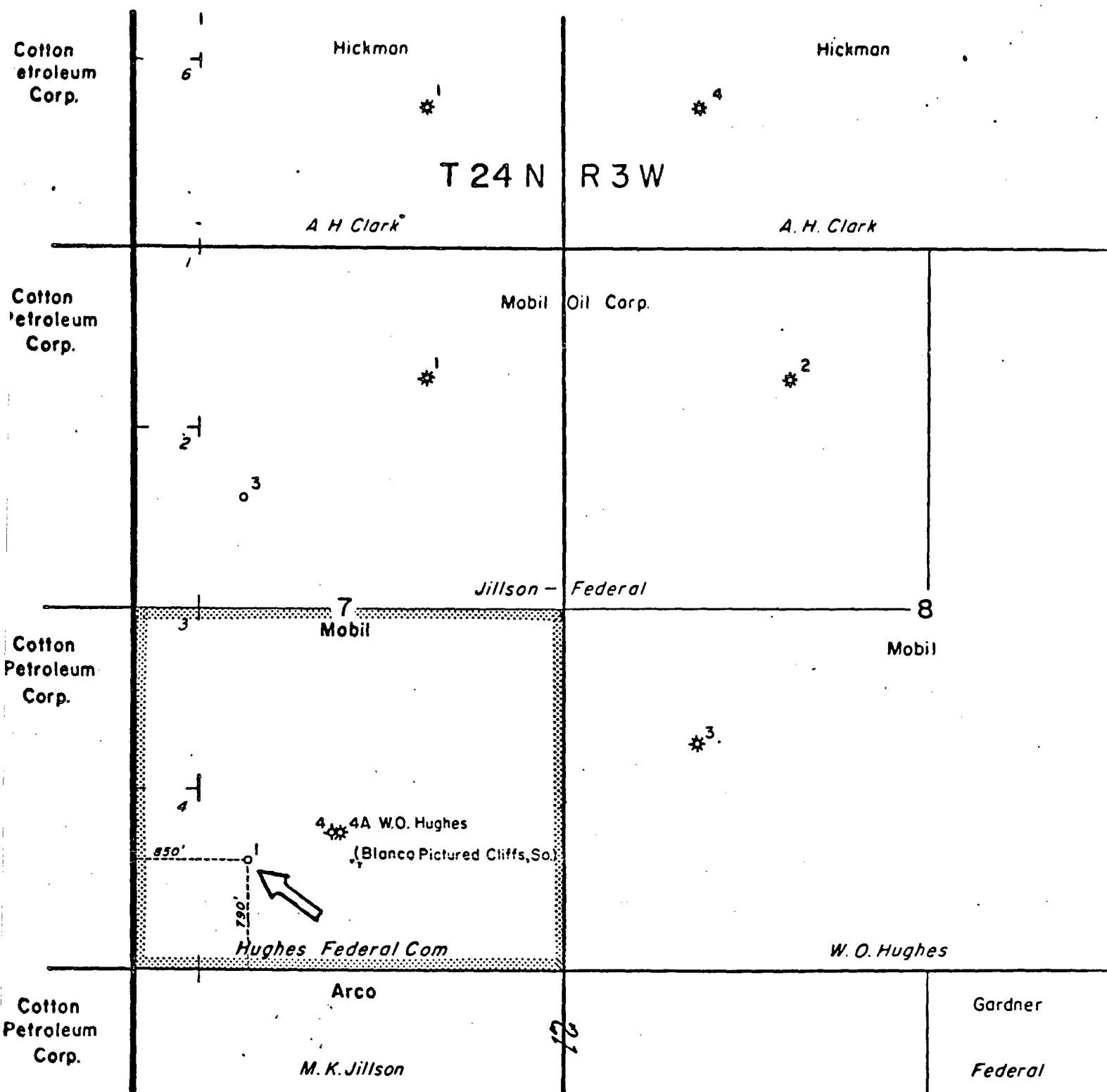
Mobil Oil Corporation

Houston E&P Division

LEASE Hughes Federal Com
WELL NO 1 DATE 19
DIVISION Houston LEASE NO. NM-36
TOTAL ACRES IN LEASE 191.25 ACRES COVERED BY PLAT 191.25
DESCRIPTION S 1/2 of Sec 7
T24N-R3W

Rio Arriba County, New Mexico

DRAWN <u>T Roy</u>	DATE <u>10-5-79</u>	FIELD <u>West Lindrith</u>
SCALE <u>1"=1000'</u>	FILE NO. <u>94</u>	<u>Gallup-Dakota Oil Pool</u>



Loc. or Drilg. Well	○
Abandoned Loc.	⊗
Dry & Abandoned Oil Well	⊕
Oil Well	●
Abd. Oil Well	⊖
Gas Well	⊗
Abd. Gas Well	⊕
S.W. Disposal Well	⊗
Gas Input Well	⊕
Water Input Well	⊗

<p>THE STATE OF TEXAS COUNTY OF HARRIS</p> <p>I hereby certify that this plat truly represents conditions as they actually exist on this lease, that said plat which is drawn to the scale indicated hereon, is to the best of my knowledge true and correct, that it accurately shows said lease with all wells on same, that number and locations of said wells are as indicated hereon, and that this plat correctly reflects all pertinent and required data</p>	<p>Mobil Oil Corporation Houston E&P Division</p>		
	LEASE <u>Hughes Federal Com</u>		
	WELL NO. <u>1</u>	DATE <u>19</u>	
	DIVISION <u>Houston</u>		LEASE NO. <u>NM-36</u>
	TOTAL ACRES IN LEASE <u>191.25</u>		ACRES COVERED BY PLAT <u>191.25</u>
DESCRIPTION <u>S 1/2 of Sec 7</u>			
<u>T 24 N - R 3 W</u>			
<u>Rio Arriba County, New Mexico</u>			
DRAWN <u>T Roy</u>	DATE <u>10-5-79</u>	FIELD <u>West Lindrith</u>	
SCALE <u>1"=1000'</u>	FILE NO. <u>94</u>	<u>Gallup-Dakota Oil Pool</u>	