



RECEIVED

AUG 13 1980

OIL CONSERVATION DIVISION
SANTA FE

360 acres R5055

L. P. Thompson
Division Manager

John R. Kemp
Assistant Division Manager

Production Department
Hobbs Division
North American Production

Conoco Inc.
P. O. Box 460
1001 North Turner
Hobbs, NM 88240
(505) 393-4141

August 13, 1980

State of New Mexico
Energy and Minerals Department
Oil Conservation Division
P.O. Box 2088
Santa Fe, New Mexico 87501

Attention: Joe D. Ramey

Gentlemen:

Request for Non-Standard Proration Unit - Meyer B-4 No. 15, 7260' FSL
and 3300' FEL of Section 4, T-21S, R-36E, Lea County, New Mexico

Conoco Inc. respectfully requests administrative approval of a 200 acre non-standard proration unit for its Meyer B-4 No. 15 well in the Eumont Queen Gas pool. The proposed unit will consist of the N/2 NE $\frac{1}{4}$, the E/2 of the NW $\frac{1}{4}$, and the NE $\frac{1}{4}$ of SW $\frac{1}{4}$, of Section 4 as shown on the attached acreage plat.

The proposed unit will conform to regulatory requirements in the following ways:

- (1) Said unit will consist of contiguous quarter - quarter sections (and/or lots).
- (2) Said unit lies wholly within a single governmental section.
- (3) The entire proposed unit may be reasonably presumed to be productive of gas.
- (4) The length of the unit does not exceed 5,280 feet.
- (5) Copies of this application have been furnished by certified mail to all operators within Section 4.

The acreage previously dedicated to Meyer B-4 No. 14 will be reduced accordingly by administrative approval.

Yours very truly,

David L. Wacker

HKW:d11

HKW:d11

cc: Offset and Other Operators Within Section 4

Gulf Oil Exploration and Production Co.
P.O. Box 670
Hobbs, NM 88240

El Paso Natural Gas Company
P.O. Box 1492
El Paso, TX 79978

Amoco Production Company
P.O. Box 68
Hobbs, NM 88240

ARCO
P.O. Box 1710
Hobbs, NM 88240

Me-Tex Gas Co.
P.O. Box 2070
Hobbs, NM 88240

NEW MEXICO OIL CONSERVATION COMMISSION
WELL LOCATION AND ACREAGE DEDICATION PLAT

RECEIVED

AUG 17 1980

Form C-102
Supersedes C-128
Effective 1-1-65

All distances must be from the outer boundaries of the Section.

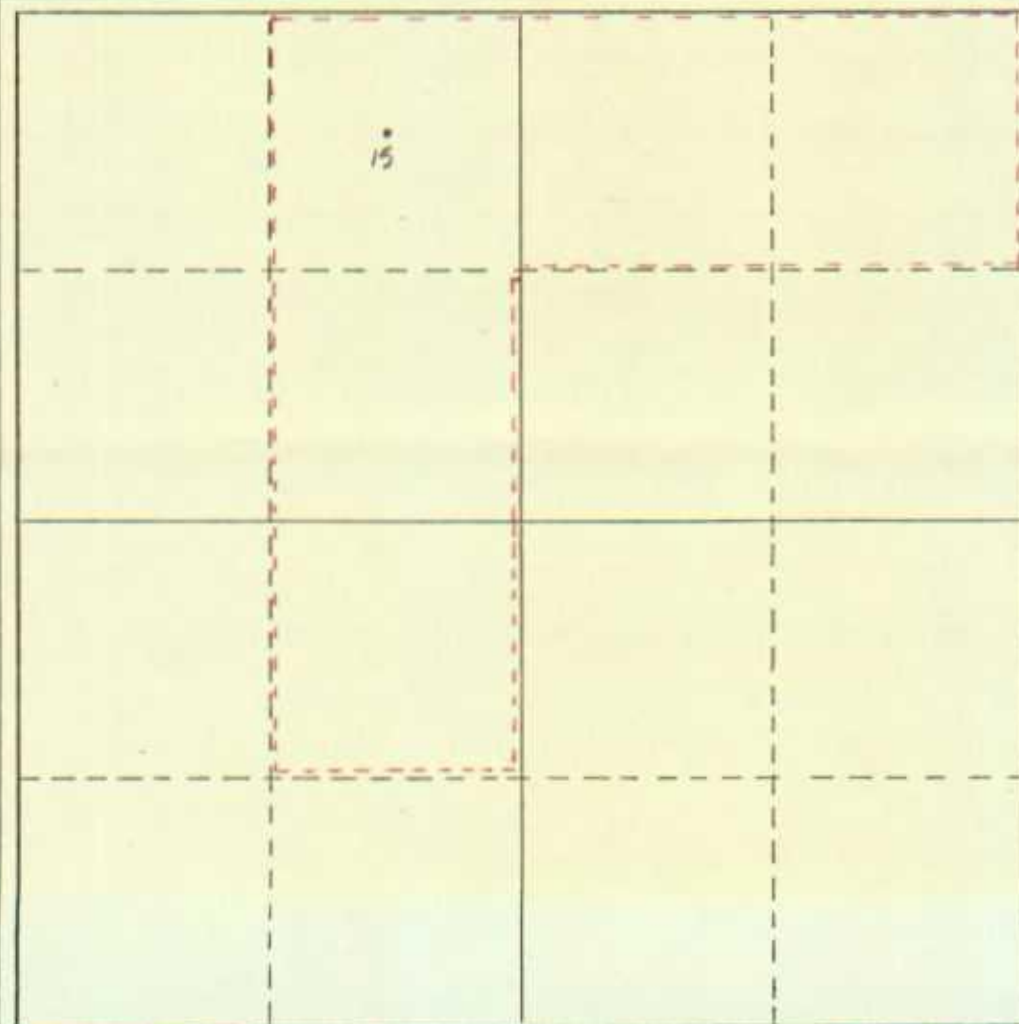
Operator CONOCO INC.			Lease MEYER B-4		OIL CONSERVATION DIVISION SANTA FE	Well No. 15
Unit Letter C	Section 4	Township 21 SOUTH	Range 36 EAST	County LEA		
Actual Footing Location of Well: 7260 feet from the SOUTH line and 3300 feet from the EAST line						
Ground Level Elev. 3545'	Producing Formation QUEEN		Pool EUMONT QUEEN GAS		Dedicated Acreage: 200 Acres	

1. Outline the acreage dedicated to the subject well by colored pencil or hatchure marks on the plat below.
2. If more than one lease is dedicated to the well, outline each and identify the ownership thereof (both as to working interest and royalty).
3. If more than one lease of different ownership is dedicated to the well, have the interests of all owners been consolidated by communitization, unitization, force-pooling, etc?

☐ Yes ☐ No If answer is "yes," type of consolidation _____

If answer is "no," list the owners and tract descriptions which have actually been consolidated. (Use reverse side of this form if necessary.) _____

No allowable will be assigned to the well until all interests have been consolidated (by communitization, unitization, forced-pooling, or otherwise) or until a non-standard unit, eliminating such interests, has been approved by the Commission.



CERTIFICATION

I hereby certify that the information contained herein is true and complete to the best of my knowledge and belief.

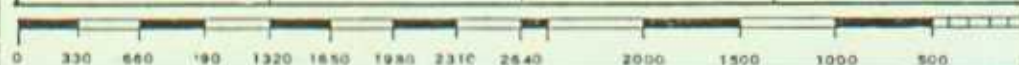
Name **Jane A. Lier**
Position **ADMIN. SUPERVISOR**
Company **CONOCO INC.**
Date _____

I hereby certify that the well location shown on this plat was plotted from field notes of actual surveys made by me or under my supervision, and that the same is true and correct to the best of my knowledge and belief.

Date Surveyed _____

Registered Professional Engineer and/or Land Surveyor

Certificate No. _____





Hold for plat, call L
m. 1629-11-80

L. P. Thompson
Division Manager

John R. Kemp
Assistant Division Manager

Production Department
Hobbs Division
North American Production

Conoco Inc.
P.O. Box 460
1001 North Turner
Hobbs, NM 88240
(505) 393-4141

August 28, 1980

State of New Mexico
Energy and Minerals Department
Oil Conservation Division
P.O. Box 2088
Santa Fe, New Mexico

Attention: Mr. Joe D. Ramey

Gentlemen:

Request for Non-Standard Proration Unit - Amended Acreage Dedication - Meyer
B-4 No. 15, Lea County, New Mexico

Conoco Inc. originally requested by letter dated August 13, 1980 a 200 acre non-standard proration unit for the subject well. We now find that it will not be necessary to dedicate an entire 200 acres to this well and request that we be allowed to amend the dedication to the NW $\frac{1}{4}$ of the NE $\frac{1}{4}$, E $\frac{1}{2}$ of the NW $\frac{1}{4}$, and the NE $\frac{1}{4}$ of the SW $\frac{1}{4}$ of Section 4, T-21S, R-36E. The acreage will then comprise a 160 acre non-standard proration unit as shown on the attached acreage plat.

The proposed unit will conform to regulatory requirements in the following ways:

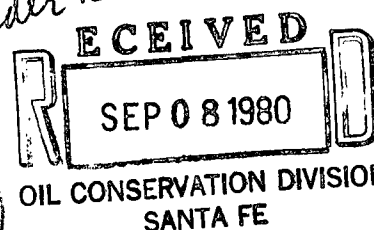
- (1) Said unit will consist of contiguous quarter - quarter sections (and/or lots).
- (2) Said unit lies wholly within a single governmental section.
- (3) The entire proposed unit may be reasonably presumed to be productive of gas.
- (4) The length of the unit does not exceed 5,280 feet.
- (5) Copies of this application have been furnished by certified mail to all operators.

The acreage previously dedicated to Meyer B-4 No. 14 will be reduced accordingly by administrative approval.

Yours very truly,

John R. Kemp

John R. Kemp
Assistant Division Manager



Mr. Joe D. Ramey
August 28, 1980
Page 2

Offset and Other Operators

Gulf Oil Exploration and Production Co.
P.O. Box 670
Hobbs, NM 88240

El Paso Natural Gas Company
P.O. Box 1492
El Paso, TX 79978

Amoco Production Company
P.O. Box 68
Hobbs, NM 882240

ARCO
P.O. Box 1710
Hobbs, NM 88240

MeTex Gas Co.
P.O. Box 2070
Hobbs, NM 88240

**NEW MEXICO OIL CONSERVATION COMMISSION
WELL LOCATION AND ACREAGE DEDICATION PLAT**

Form C-102
Supersedes C-128
Effective 1-1-55

All distances must be from the outer boundaries of the Section.

Operator <i>Comoco Inc.</i>			Lessee <i>Meyer B-4</i>		Well No. <i>15</i>
Unit Letter <i>C</i>	Section <i>4</i>	Township <i>21 South</i>	Range <i>36 East</i>	County <i>Lea</i>	
Actual Footage Location of Well: <i>7260</i> feet from the <i>South</i> line and <i>3300</i> feet from the <i>East</i> line					
Ground Level Elev. <i>3545'</i>	Producing Formation <i>Queen</i>		Pool <i>Camont Queen Gas</i>	Dedicated Acreage <i>1.60</i> Acres	

1. Outline the acreage dedicated to the subject well by colored pencil or hatchure marks on the plat below.
2. If more than one lease is dedicated to the well, outline each and identify the ownership thereof (both as to working interest and royalty).
3. If more than one lease of different ownership is dedicated to the well, have the interests of all owners been consolidated by communitization, unitization, force-pooling, etc?

☐ Yes ☐ No If answer is "yes," type of consolidation _____

If answer is "no," list the owners and tract descriptions which have actually been consolidated. (Use reverse side of this form if necessary.) _____

No allowable will be assigned to the well until all interests have been consolidated (by communitization, unitization, forced-pooling, or otherwise) or until a non-standard unit, eliminating such interests, has been approved by the Commission.

CERTIFICATION

I hereby certify that the information contained herein is true and complete to the best of my knowledge and belief.

Name *Jane A. Nier*
 Position *Admin. Supervisor*
 Company *Comoco Inc.*
 Date _____

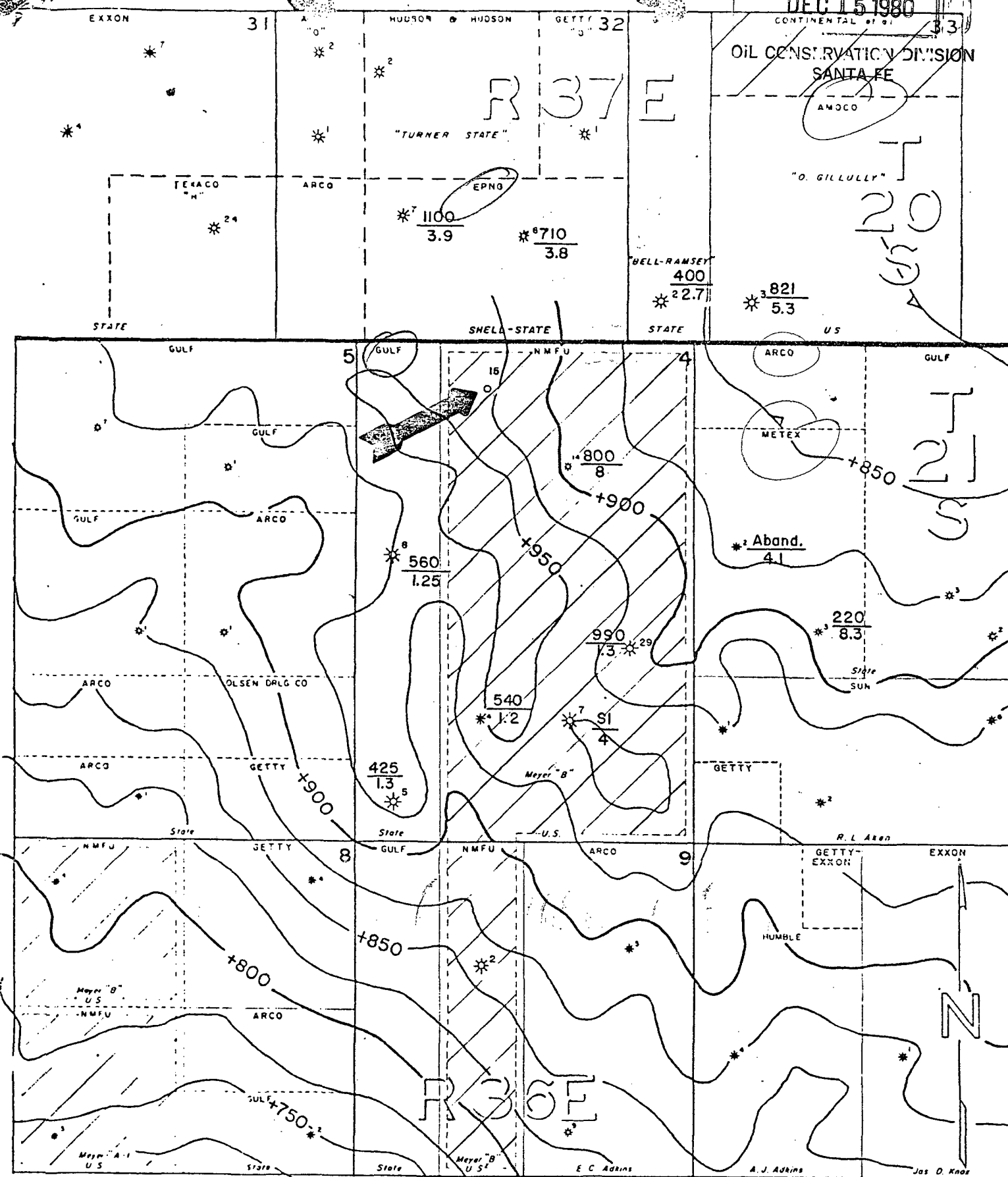
I hereby certify that the well location shown on this plat was plotted from field notes of actual surveys made by me or under my supervision, and that the same is true and correct to the best of my knowledge and belief.

Date Surveyed _____
 Registered Professional Engineer and/or Land Surveyor

Certificate No. _____



RECEIVED
 DEC 15 1980
 OIL CONSERVATION DIVISION
 SANTA FE
 AMOCO



MCFGPD
 BCF

ONLY EUMONT GAS WELLS SHOWN

CONOCO	
PRODUCTION DEPARTMENT	HOBBS DIVISION
LEA COUNTY, NEW MEXICO TOP OF YATES CI = 25'	
SCALE 0 1000 2000	
Rev. 3-80	116
LEGEND: ○ LOCATION ● GAS WELL ○ GAS WELL ○ DRY HOLE ○ INJECTION WELL ○ ABANDONED WELL ○ SHUT-IN WELL ⊕ SALT WATER ⊕ DISPOSAL WELL ⊕ DEEPER WELL ⊕ ZONE UNTESTED	