

Gulf Oil Exploration and Production Company

R. C. Anderson
PRODUCTION MANAGER, HOBBS AREA

July 15, 1982

JUL 19 1982

P. O. Box 670
Hobbs, NM 88240

CERTIFIED MAIL - RETURN RECEIPT REQUESTED

Mr. Joe D. Ramey
New Mexico Oil Conservation Division
P. O. Box 2088
Santa Fe, New Mexico 87501

Gentlemen:

Gulf Oil Corporation recently recompleted its Arnott-Ramsay (NCT-E) Well No. 9 in the Jalmat pool. This well is located 1980' FSL and 1980' FEL of Section 16-T25S-R37E, Lea County, New Mexico.

✓ On July 7, 1982, this well tested for 62 BOPD and 59 MCFGPD. With a GOR of 952, this well will be classified as an oil well. The No. 9 well is located in the same 280-acre non-standard proration unit established by Case No. 918, Order No. R-678 and assigned to the Arnott-Ramsay (NCT-E) Well No. 2, a Jalmat gas well.

We are hereby requesting to change from a 280-acre to a 240-acre non-standard proration unit, and assign a 40-acre proration unit to the newly completed Jalmat oil well. This letter will serve as notification to the offset operators. Your cooperation will be greatly appreciated.

Yours truly,

R. C. Anderson
R. C. Anderson

DAH/jr

Attachment

cc: New Mexico Oil Conservation Division - Hobbs
Attached Offset Operators



A DIVISION OF GULF OIL CORPORATION

NSP-1324
N/2 SW/4, SE/4 SW/4
S/2 SE/4 & NE/4 SW/4
16-75-37
Rule 5 c 3 R/670
Aug 18, 1982

OFFSET OPERATORS
Arnott-Ramsay (NCT-E) #9

Union Texas Petroleum
1300 Wilco Bldg.
Midland, TX 79701

Mesa Oil Company
Drawer R
Jal, NM 88252

Lewis B. Burleson, Inc.
Box 2479
Midland, TX 79702

Bettis, Boyle & Stovall
Box 1168
Graham, TX 76046

Arco Oil & Gas Co., a Division of Atlantic Richfield Co.
P. O. Box 1710
Hobbs, NM 88240

Mobil Producing Texas & NM, Inc.
Nine Greenway Plaza, Suite 2700
Houston, TX 77046

Amoco Production Co.
P. O. Box 68
Hobbs, NM 88240

All distances must be from the outer boundaries of the section.

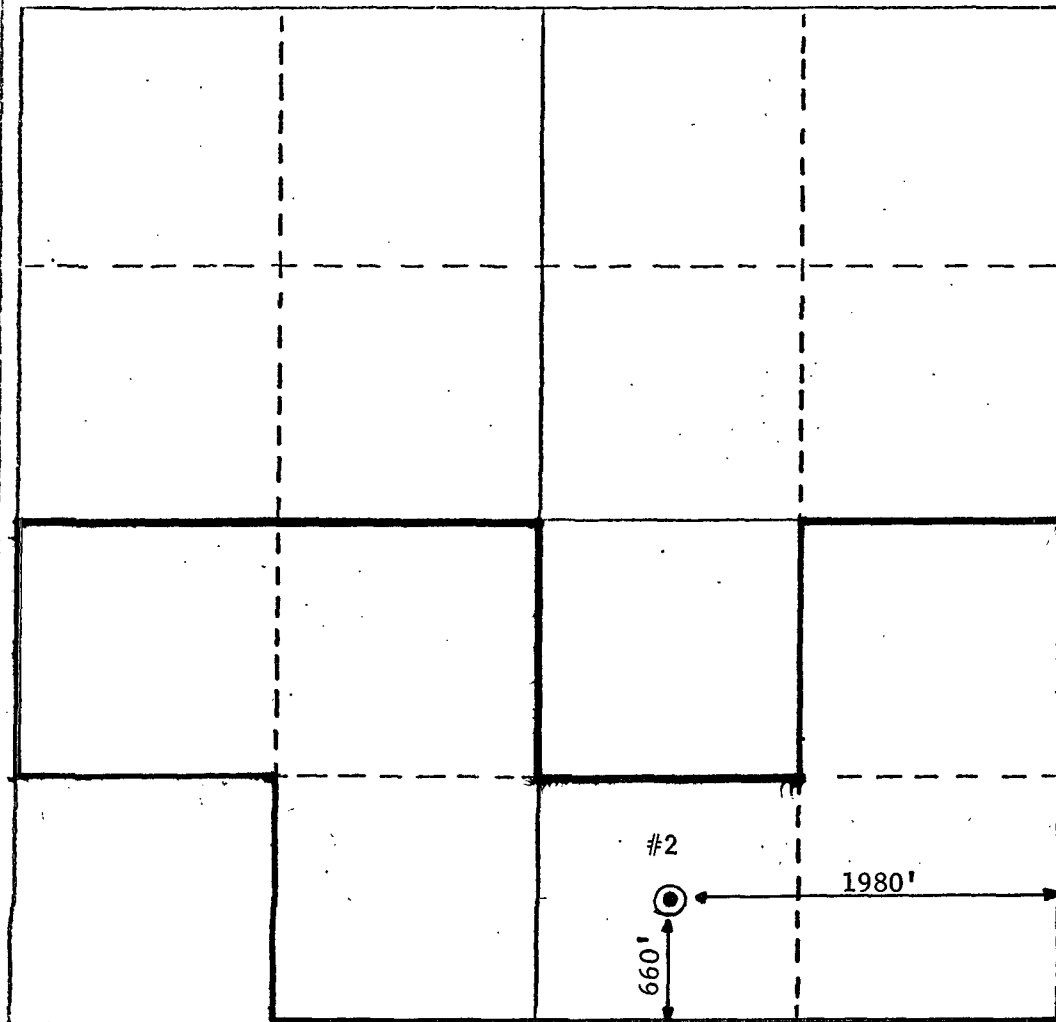
Operator Gulf Oil Corporation			Lease Arnott-Ramsay (NIT-E)		Well No. 2
Unit Letter 0	Section 16	Township 25S	Range 37E	County Lea	
Actual Footage Location of Well: 660 feet from the South line and 1980 feet from the East line					
Ground Level Elev. 3090'	Producing Formation Yates Seven Rivers	Pool Jalmat	Dedicated Acreage: 240 Acres		

1. Outline the acreage dedicated to the subject well by colored pencil or hatchure marks on the plat below.
2. If more than one lease is dedicated to the well, outline each and identify the ownership thereof (both as to working interest and royalty).
3. If more than one lease of different ownership is dedicated to the well, have the interests of all owners been consolidated by communitization, unitization, force-pooling, etc?

☐ Yes ☒ No If answer is "yes," type of consolidation _____

If answer is "no," list the owners and tract descriptions which have actually been consolidated. (Use reverse side of this form if necessary.) _____

No allowable will be assigned to the well until all interests have been consolidated (by communitization, unitization, forced-pooling, or otherwise) or until a non-standard unit, eliminating such interests, has been approved by the Division.



CERTIFICATION

I hereby certify that the information contained herein is true and complete to the best of my knowledge and belief.

R. D. Pitre

Name
R. D. Pitre

Position
Area Engineer

Company
Gulf Oil Corporation

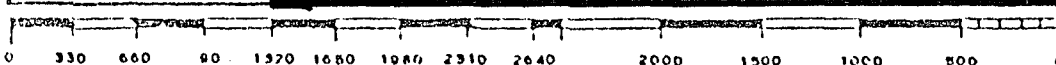
Date
7-12-82

I hereby certify that the well location shown on this plat was plotted from field notes of actual surveys made by me or under my supervision, and that the same is true and correct to the best of my knowledge and belief.

Date Surveyed _____

Registered Professional Engineer and/or Land Surveyor _____

Certificate No. _____



Gulf Oil Exploration and Production Company

R. C. Anderson
PRODUCTION MANAGER, HOBBS AREA

July 21, 1982

P. O. Box 670
Hobbs, NM 88240

Mr. R. L. Stamets
Technical Support Chief
Energy and Minerals Department
New Mexico Oil Conservation Division
State Land Office Bldg.
Santa Fe, NM 87501

Gentlemen:

Please find attached the requested information necessary to complete Gulf Oil Corporation's application for a non-standard proration unit for its Arnott-Ramsay (NCT-E) Well No. 2, located in Section 16-T25S-R37E, Lea County, New Mexico.

State form C-102 is also attached showing the proration unit and location of Gulf's Well No. 2 and for the Arnott-Ramsay (NCT-E) Well No. 9, a recently re-completed gas well in the Jalmat pool, located in Section 16-T25S-R37E, Lea County, New Mexico.

If more information is required, please contact our Gas Engineering Department in the Hobbs Area office.

Yours very truly,


R. C. Anderson

DAH/jr

Attachments



A DIVISION OF GULF OIL CORPORATION

OIL CONSERVATION DIVISION

STATE OF NEW MEXICO
ENERGY AND MINERALS DEPARTMENTP. O. BOX 2088
SANTA FE, NEW MEXICO 87501Form C-102
Revised 10-1-78

All distances must be from the outer boundaries of the Section.

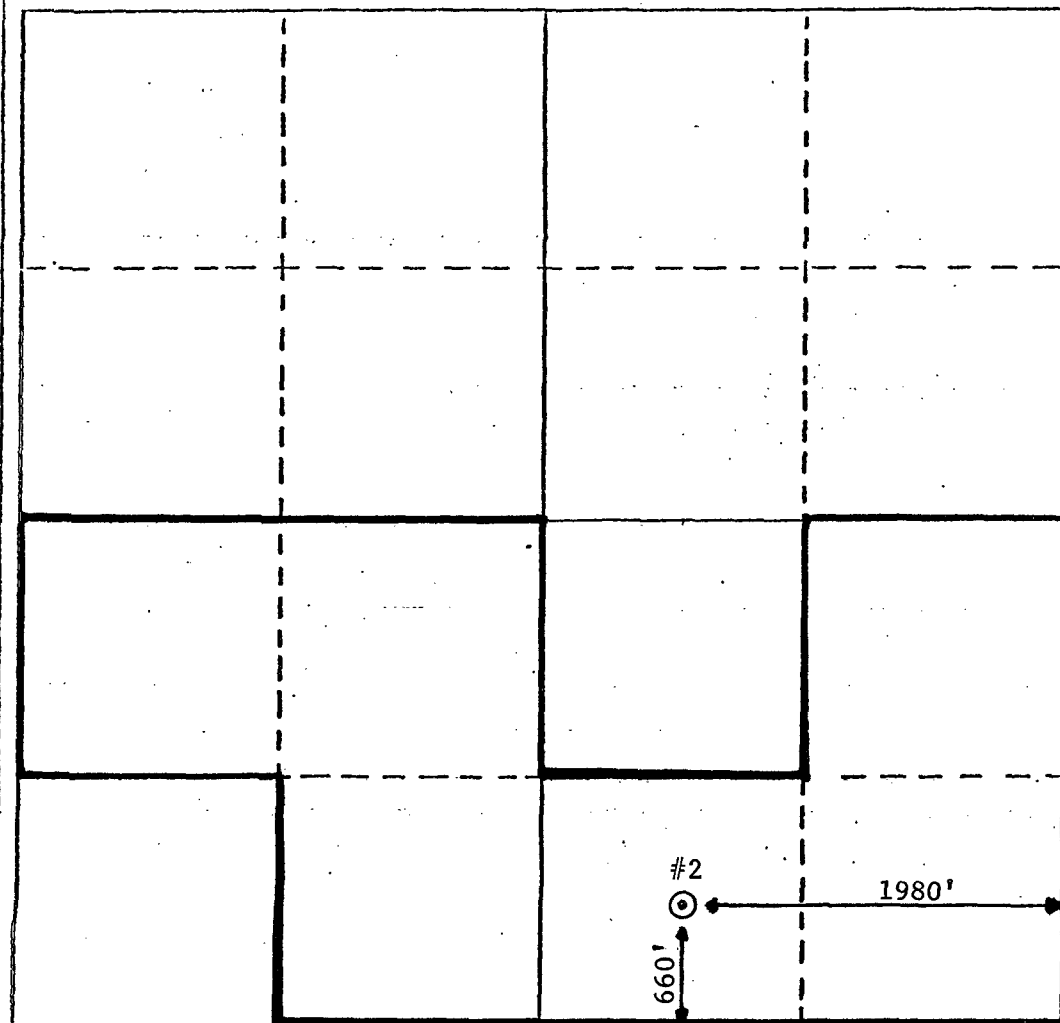
Operator Gulf Oil Corporation		Lease Arnott-Ramsay (NCT-E)		Well No. 2
Unit Letter 0	Section 16	Township 25S	Range 37E	County Lea
Actual Footage Location of Well: 660 feet from the South line and 1980 feet from the East line				
Ground Level Elev. 3091'	Producing Formation Yates Seven Rivers	Pool Jalmat	Dedicated Acreage: 240 Acres	

1. Outline the acreage dedicated to the subject well by colored pencil or hatchure marks on the plat below.
2. If more than one lease is dedicated to the well, outline each and identify the ownership thereof (both as to working interest and royalty).
3. If more than one lease of different ownership is dedicated to the well, have the interests of all owners been consolidated by communitization, unitization, force-pooling, etc?

☐ Yes ☒ No If answer is "yes," type of consolidation _____

If answer is "no," list the owners and tract descriptions which have actually been consolidated. (Use reverse side of this form if necessary.) _____

No allowable will be assigned to the well until all interests have been consolidated (by communitization, unitization, forced-pooling, or otherwise) or until a non-standard unit, eliminating such interests, has been approved by the Division.



CERTIFICATION

I hereby certify that the information contained herein is true and complete to the best of my knowledge and belief.

R. D. Pitre

Name

R. D. Pitre

Position

Area Engineer

Company

Gulf Oil Corporation

Date

7-21-82

I hereby certify that the well location shown on this plat was plotted from field notes of actual surveys made by me or under my supervision, and that the same is true and correct to the best of my knowledge and belief.

Date Surveyed

Registered Professional Engineer
and/or Land Surveyor

Certificate No.

OIL CONSERVATION DIVISION

STATE OF NEW MEXICO
ENERGY AND MINERALS DEPARTMENT

P. O. BOX 2088

SANTA FE, NEW MEXICO 87501

Form C-102
Revised 10-1-78

All distances must be from the outer boundaries of the Section.

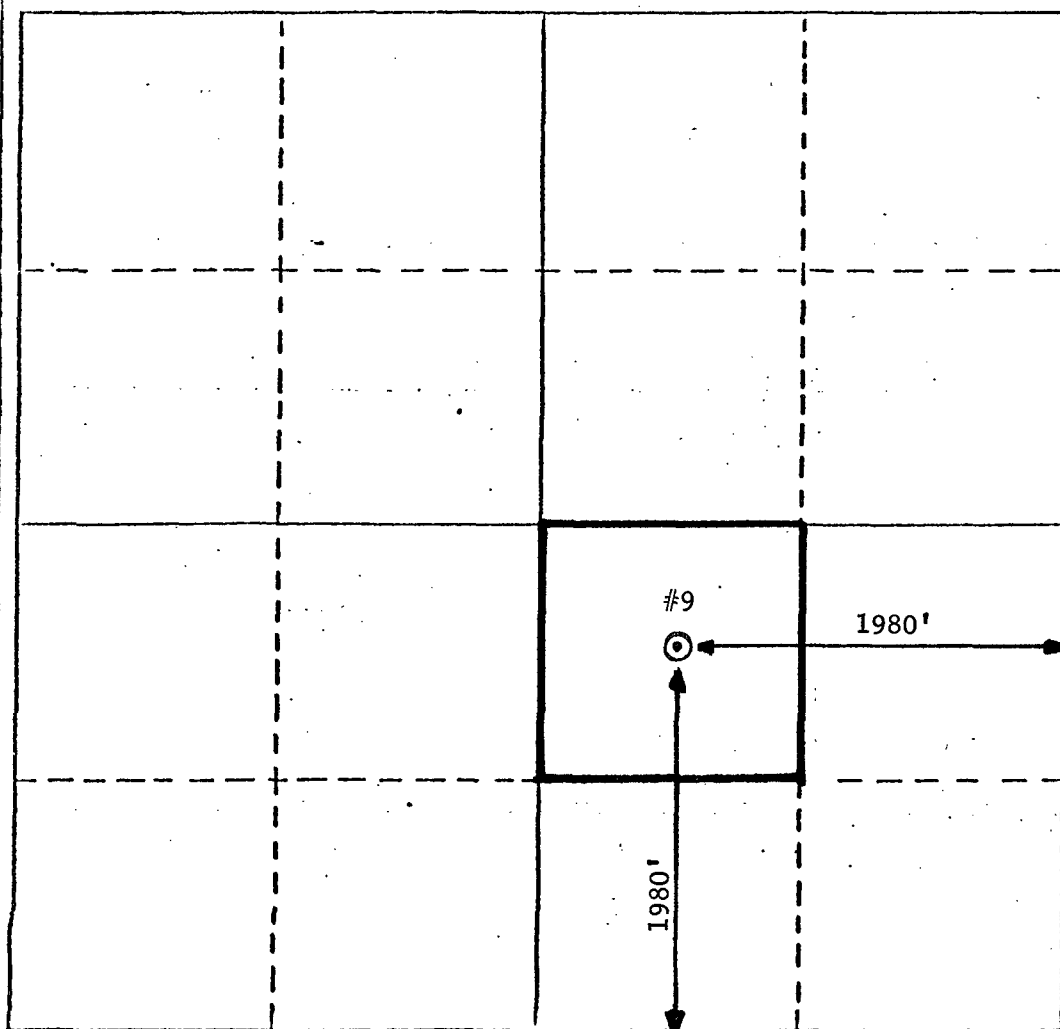
Operator Gulf Oil Corporation			Lease Arnott-Ramsay (NCT-E)		Well No. 9
Unit Letter J	Section 16	Township 25S	Range 37E	County Lea	
Actual Footage Location of Well:					
1980 feet from the South		line and		1980 feet from the East	
Ground Level Elev. 3101'	Producing Formation Yates Seven Rivers		Pool Jalmat		Dedicated Acreage: 40 Acres

1. Outline the acreage dedicated to the subject well by colored pencil or hatchure marks on the plat below.
2. If more than one lease is dedicated to the well, outline each and identify the ownership thereof (both as to working interest and royalty).
3. If more than one lease of different ownership is dedicated to the well, have the interests of all owners been consolidated by communitization, unitization, force-pooling, etc?

☐ Yes ☒ No If answer is "yes," type of consolidation _____

If answer is "no," list the owners and tract descriptions which have actually been consolidated. (Use reverse side of this form if necessary.) _____

No allowable will be assigned to the well until all interests have been consolidated (by communitization, unitization, forced-pooling, or otherwise) or until a non-standard unit, eliminating such interests, has been approved by the Division.



CERTIFICATION

I hereby certify that the information contained herein is true and complete to the best of my knowledge and belief.

R. D. Pitre

Name

R. D. Pitre

Position

Area Engineer

Company

Gulf Oil Corporation

Date

7-21-82

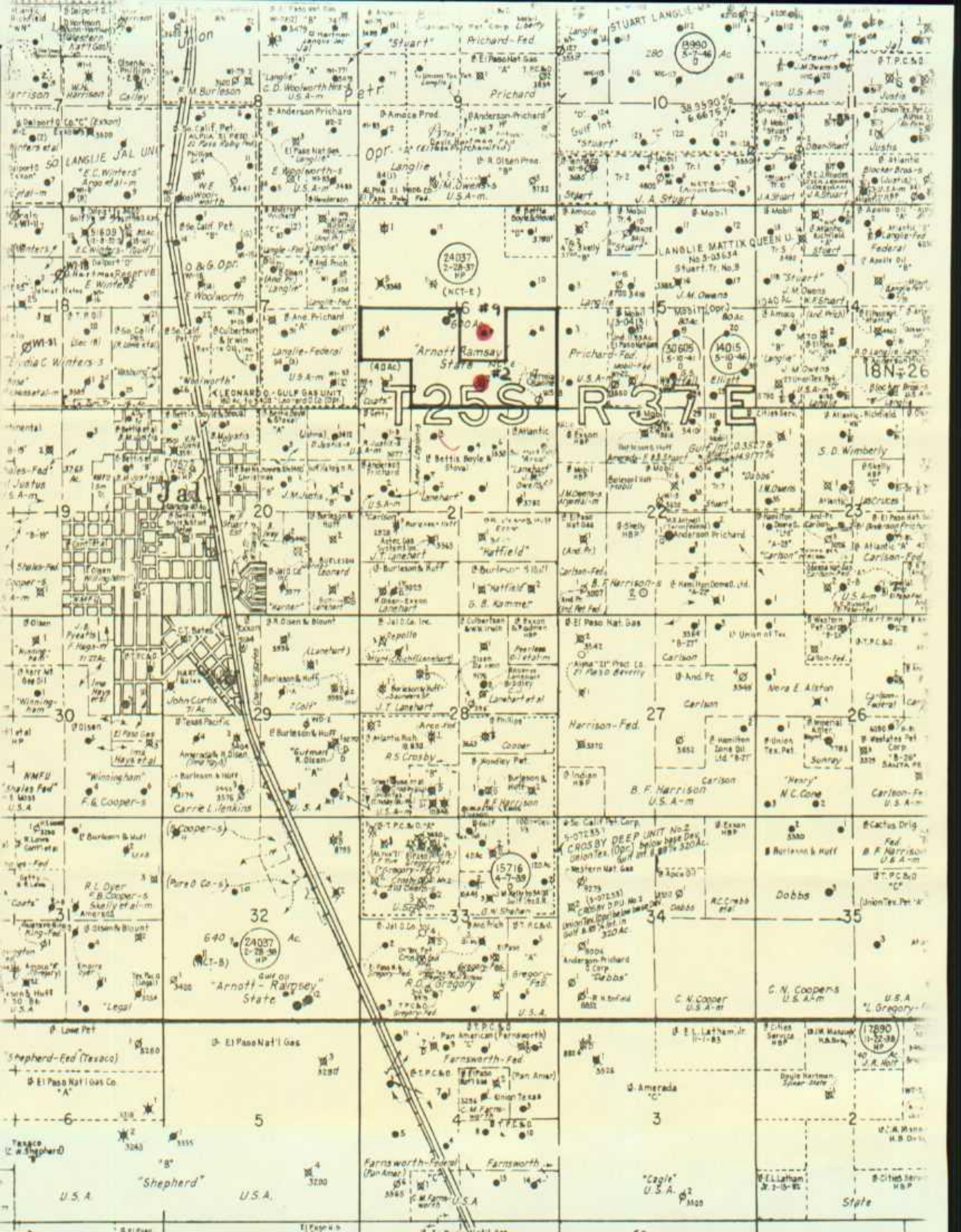
I hereby certify that the well location shown on this plat was plotted from field notes of actual surveys made by me or under my supervision, and that the same is true and correct to the best of my knowledge and belief.

Date Surveyed

Registered Professional Engineer
and/or Land Surveyor

Certificate No.

0 330 660 990 1320 1650 1980 2310 2640 2970 3300 3630 3960 4290 4620 4950 5280 5610 5940 6270 6600





STATE OF NEW MEXICO
ENERGY AND MINERALS DEPARTMENT
OIL CONSERVATION DIVISION

July 21, 1982

BRUCE KING
GOVERNOR
LARRY KEHOE
SECRETARY

RECEIVED
JUL 22 1982
LANDS AREA

POST OFFICE BOX 2088
STATE LAND OFFICE BUILDING
SANTA FE, NEW MEXICO 87501
(505) 827-2434

Gulf Oil Corporation
P. O. Box 670
Hobbs, New Mexico 88240

Re: Application for Non-Standard
Proration Unit: Sec. 16,
T-25-S, R-37-E, Lea County

We may not process the subject application for a non-standard proration unit until the required information or plats checked below (is)(are) submitted.

- ☒ A plat must be submitted clearly showing the ownership of the offsetting leases.
- ☐ A statement must be submitted that offset owners have been notified of the application by certified mail.
- ☐ A plat must be submitted identifying the requested non-standard proration unit and offsetting acreage.
- ☐ The pool(s) or formation(s) for which the non-standard proration unit is requested must be identified.
- ☐ Other:

Very truly yours,

R. L. STAMETS
Technical Support Chief

RLS/dr



STATE OF NEW MEXICO
ENERGY AND MINERALS DEPARTMENT
OIL CONSERVATION DIVISION

July 21, 1982

BRUCE KING
GOVERNOR

LARRY KEHOE
SECRETARY

POST OFFICE BOX 2088
STATE LAND OFFICE BUILDING
SANTA FE, NEW MEXICO 87501
(505) 827-2434

Gulf Oil Corporation
P. O. Box 670
Hobbs, New Mexico 88240

Re: Application for Non-Standard
Proration Unit: Sec. 16,
T-25-S, R-37-E, Lea County

We may not process the subject application for a non-standard proration unit until the required information or plats checked below (is)(are) submitted.

- ☒ A plat must be submitted clearly showing the ownership of the offsetting leases.
- ☐ A statement must be submitted that offset owners have been notified of the application by certified mail.
- ☐ A plat must be submitted identifying the requested non-standard proration unit and offsetting acreage.
- ☐ The pool(s) or formation(s) for which the non-standard proration unit is requested must be identified.
- ☐ Other:

Very truly yours,

R. L. STAMETS
Technical Support Chief

RLS/dr