

DEC 13 1982



ALPHA TWENTY-ONE PRODUCTION COMPANY

POST OFFICE BOX 1206
JAL, NEW MEXICO 88252

505/395-3056

December 3, 1982

Oil Conservation Commission
P. O. Box 2088
Santa Fe, New Mexico 87501

Attention: Joe D. Ramey, Director

RE: Application for a ⁸⁰~~640~~ acre non-standard gas proration unit,
Eumont Gas Pool, comprising the N 1/2 of the NW 1/4 of
Section 20, T-19-S, R-37-E, Lea County, New Mexico.

Mr. Ramey:

Alpha Twenty-One Production Company hereby makes an application for approval of a 640 acre non-standard gas proration unit in the Eumont Gas Pool comprising the N 1/2 of the NW 1/4 of Section 20, T-19-S, R-37-E, Lea County, New Mexico, and in support thereof states the following facts:

1. Alpha Twenty-One Production Company has acquired from Getty Oil Company, in the form of a farm out, the N 1/2 of the NW 1/4 of Section 20, T-19-S, R-37-E of Lea County, New Mexico (80 acres).
2. The proposed non-standard gas proration unit will meet the requirements of Rule 5 (C) of the Oil Conservation Commission Order No. R-1670 as follows:
 - a. The proposed non-standard proration unit consists of less acreage than a standard proration unit.
 - b. The non-standard gas proration unit consists of contiguous quarter-quarter sections.
 - c. The non-standard gas proration unit lies wholly within a single governmental section in the Eumont Gas Pool with 640 acre standard proration units.

-Continued-

- d. The entire non-standard gas proration unit may reasonably be presumed to be productive of gas from the applicable gas pool.
- e. The length or width of the non-standard gas proration unit does not exceed 5,280 feet in pools with 640 acre standard proration units.
- f. By copy of this letter of application, all operators owning interest in the section in which the proposed non-standard gas proration unit is located and all operators within 1500 feet of the proposed unit well are notified by registered mail of the intent of Alpha Twenty-One Production Company to form the proposed non-standard gas proration unit.

In view of the existence of the facts herein stated and compliance with the provisions of Rule 5 (C) of the Oil Conservation Commission's Order No. R-1670, Alpha Twenty-One Production Company requests that the Director of the Commission approve the above described non-standard gas proration unit.

Respectfully submitted,

ALPHA TWENTY-ONE PRODUCTION COMPANY

by: Michael D. Oney
Michael D. Oney
Drilling Superintendent

Registered Mail - Return Receipt Requested:

Amerada Hess Corporation
P. O. Box 840
Seminole, Texas 79361
Attn: George Garrett

Conoco, Incorporated
P. O. Box 460
Hobbs, New Mexico 88240
Attn: Mark Mosley

Gulf Oil Corporation
P. O. Box 670
Hobbs, New Mexico 88240
Attn: R. D. Pitre

Shell Oil Company
P. O. Box 1950
Hobbs, New Mexico 88240
Attn: Welton Moore

-Continued-

Getty Oil Company
P. O. Box 1231
Midland, Texas 79702
Attn: L. R. Hall

Texaco, Incorporated
P. O. Box 728
Hobbs, New Mexico 88240
Attn: John V. Gannon

Grace Petroleum Company
P. O. Drawer 2358
Midland, Texas 79702
Attn: Buddy Knight

Wiser Oil Company
P. O. Box 2467
Hobbs, New Mexico 88240
Attn: Bill D. Singletary

cc: Oil Conservation Commission
P. O. Box 1980
Hobbs, New Mexico 88240

Bob Lansford
Alpha Twenty-One Production Company

Alpha Twenty-One Production Company
P. O. Box 1206
Jal, New Mexico 88252

MDO/bfm

NO. OF COPIES RECEIVED	
DISTRIBUTION	
SANTA FE	
FILE	
U.S.G.S.	
LAND OFFICE	
OPERATOR	

P. O. BOX 2088
SANTA FE, NEW MEXICO 87501

DEC 13 1982

5A. Indicate Type of Lease STATE <input checked="" type="checkbox"/> FEE <input type="checkbox"/>
5. State Oil & Gas Lease No.
7. Unit Agreement Name
8. Farm or Lease Name Dority
9. Well No. 1
10. Field and Pool, or Wildcat Eumont Gas
12. County Lea
19. Proposed Depth 3850
19A. Formation Queen
20. Rotary or C.T. Rotary
22. Approx. Date Work will start 1-10-83

APPLICATION FOR PERMIT TO DRILL, DEEPEN, OR PLUG BACK

Type of Work
Type of Well
DRILL ☒ DEEPEN ☐ PLUG BACK ☐
OIL WELL ☐ GAS WELL ☒ OTHER ☐ SINGLE ZONE ☐ MULTIPLE ZONE ☐
Name of Operator
Alpha Twenty-One Production Company
Address of Operator
P.O. Box 1206 Jal, New Mexico 88252
Location of Well
UNIT LETTER C LOCATED 660 FEET FROM THE North LINE
1650 FEET FROM THE West LINE OF SEC. 20 TWP. 19-S RGE. 37-E NMPM
Elevations (Show whether DT, RT, etc.)
3681.3 GL
21A. Kind & Status Plug. Bond
State Wide
21B. Drilling Contractor
22. Approx. Date Work will start
1-10-83

PROPOSED CASING AND CEMENT PROGRAM

SIZE OF HOLE	SIZE OF CASING	WEIGHT PER FOOT	SETTING DEPTH	SACKS OF CEMENT	EST. TOP
12-1/4"	8-5/8"	24#	400'	250	Circulate
7-7/8"	5-1/2"	14#	3850'	1200	Circulate

The proposed well is being requested for a Non-Standard Proration Unit in the Eumont Gas field. (See Attachments)

The proposed well will be equipped with a 3000PSI Double Ram BOP System from the base of surface casing through the running of production casing.

OVER SPACE DESCRIBE PROPOSED PROGRAM: IF PROPOSAL IS TO DEEPEN OR PLUG BACK, GIVE DATA ON PRESENT PRODUCTIVE ZONE AND PROPOSED NEW PRODUCTION. GIVE BLOWOUT PREVENTER PROGRAM, IF ANY.

by certify that the information above is true and complete to the best of my knowledge and belief.

Michael D. Ozy Title Drilling Superintendent Date 12-3-82
(This space for State Use)

APPROVED BY TITLE DATE

REMARKS OF APPROVAL, IF ANY:

**NEW MEXICO OIL CONSERVATION COMMISSION
WELL LOCATION AND ACREAGE DEDICATION PLAT**

Form C-102
Supersedes C-128
Effective 1-1-85

All distances must be from the outer boundaries of the Section

Operator ALPHA 21 PRODUCTION CO.			Lease DORITY		Well No. 1
Tract Letter C	Section 20	Township 19S	Range 37E	County LEA	
Actual Tractage Location of Well:					
660	feet from the	NORTH	Line and	1650	feet from the WEST line
Ground Level Elev. 3681.3	Producing Formation Queen		Pools Bumont Gas	Dedicated Acreage: 80 Acres	

1. Outline the acreage dedicated to the subject well by colored pencil or hatchure marks on the plat below.
2. If more than one lease is dedicated to the well, outline each and identify the ownership thereof (both as to working interest and royalty).
3. If more than one lease of different ownership is dedicated to the well, have the interests of all owners been consolidated by communitization, unitization, force-pooling, etc?

☐ Yes ☐ No If answer is "yes," type of consolidation _____

If answer is "no," list the owners and tract descriptions which have actually been consolidated. (Use reverse side of this form if necessary.) _____

No allowable will be assigned to the well until all interests have been consolidated (by communitization, unitization, forced-pooling, or otherwise) or until a non-standard unit, eliminating such interests, has been approved by the Commission.



CERTIFICATION

I hereby certify that the information contained herein is true and complete to the best of my knowledge and belief.

Michael D. Oney
Name
Michael D. Oney

Position
Drilling Superintendent

Company
Alpha 21 Production Co.

Date
12-3-82

I hereby certify that the well location shown on this plat was plotted from field notes of actual surveys made by me or under my supervision, and that the same is true and correct to the best of my knowledge and belief.

Date Surveyed
11/23/82

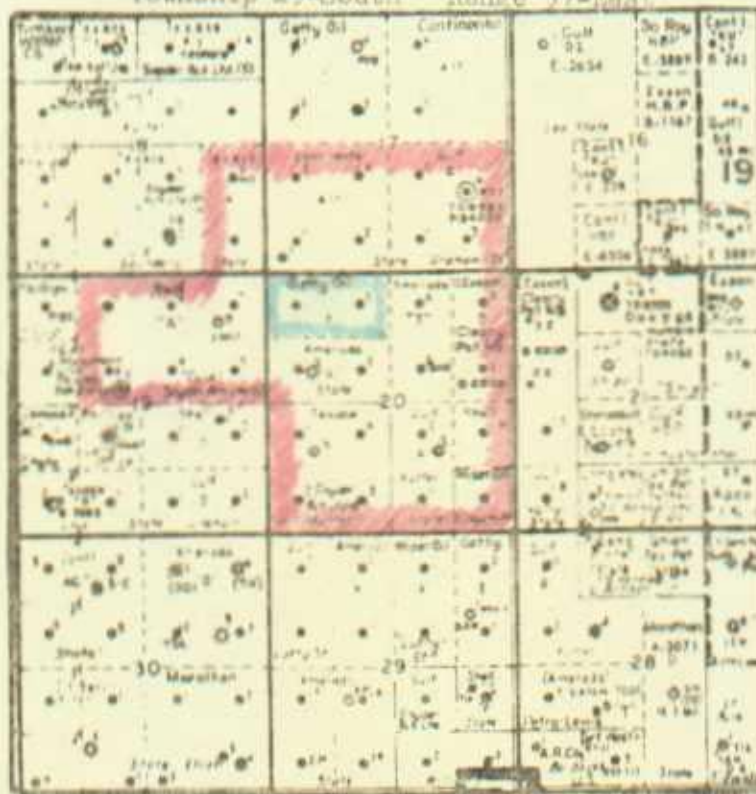
Registered Professional Engineer
and/or Land Surveyor

John W. West

Certificate No.
JOHN W. WEST N.M. #676

0 200 400 600 800 1000 1200 1400 1600 1800 2000 2200 2400 2600 2800 3000

Township 19-South Range 37-East

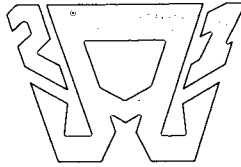


ALPHA TWENTY-ONE PRODUCTION COMPANY
JAL OFFICE
Scale 1"=4,000'

Plat accompanying application for
640-acre Non-Standard Gas Unit
(Eumont Gas Pool)

Alpha 21-Getty Farm Out-80 acres

Blue-Alpha 21 Lease acreage
Red-Offset Operators notified



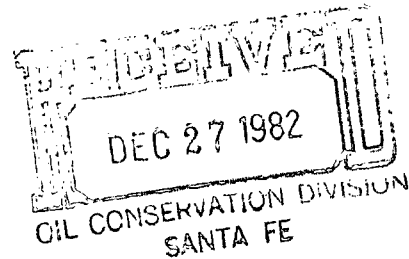
ALPHA TWENTY-ONE PRODUCTION COMPANY

POST OFFICE BOX 1206
JAL, NEW MEXICO 88252

505/395-3056

December 20, 1982

Oil Conservation Commission
P. O. Box 2088
Santa Fe, New Mexico 87501



Attention: Joe D. Ramey, Director

RE: Application for non-standard gas proration unit, Eumont Gas Pool, comprising the N 1/2 of the NW 1/4 of Section 20, T-19-S, R-27-E, Lea County, New Mexico.

Mr. Ramey:

In reference to our letter dated December 3, 1982, we wish to correct an error.

The letter stated Alpha Twenty-One Production Company was applying for a 640 acre non-standard gas proration unit. The letter should have stated, Alpha Twenty-One Production Company was applying for an 80 acre non-standard gas proration unit.

All offset operators involved in this matter have been notified of the error.

We are sorry for any inconvenience this may have caused. Please accept our apology.

Sincerely yours,

Michael D. Oney
Drilling Superintendent

MDO/bfm

Amerada Hess Corporation
P. O. Box 840
Seminole, Texas 79361
Attn: George Garrett

Conoco, Incorporated
P. O. Box 460
Hobbs, New Mexico 88240
Attn: Mark Mosley

Getty Oil Company
P. O. Box 1231
Midland, Texas 79702
Attn: L. R. Hall

Grace Petroleum Company
P. O. Drawer 2358
Midland, Texas 79702
Attn: Buddy Knight

Gulf Oil Corporation
P. O. Box 670
Hobbs, New Mexico 88240
Attn: R. D. Pitre

Shell Oil Company
P. O. Box 1950
Hobbs, New Mexico 88240
Attn: Welton Moore

Texaco, Incorporated
P. O. Box 728
Hobbs, New Mexico 88240
Attn: John V. Gannon

Wiser Oil Company
P. O. Box 2467
Hobbs, New Mexico 88240
Attn: Bill D. Singletary

