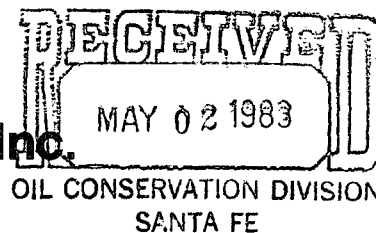


Mobil Producing Texas & New Mexico Inc.



April 26, 1983

NINE GREENWAY PLAZA-SUITE 2700
HOUSTON, TEXAS 77046

State of New Mexico
Energy and Minerals Department
Oil Conservation Division
P.O. Box 2088
Santa Fe, NM 87501

Attention Mr. Joe D. Ramey, Director

*NSP 7381
Rule 4(b) 35353
lots 4, 5, 6, 7, 8, 9, 10, 11, 12, 13, 14, 15, 16, 17, 18, 19, 20, 21, 22, 23, 24, 25, 26, 27, 28, 29, 30, 31, 32, 33, 34, 35, 36, 37, 38, 39, 40, 41, 42, 43, 44, 45, 46, 47, 48, 49, 50, 51, 52, 53, 54, 55, 56, 57, 58, 59, 60, 61, 62, 63, 64, 65, 66, 67, 68, 69, 70, 71, 72, 73, 74, 75, 76, 77, 78, 79, 80, 81, 82, 83, 84, 85, 86, 87, 88, 89, 90, 91, 92, 93, 94, 95, 96, 97, 98, 99, 100, 101, 102, 103, 104, 105, 106, 107, 108, 109, 110, 111, 112, 113, 114, 115, 116, 117, 118, 119, 120, 121, 122, 123, 124, 125, 126, 127, 128, 129, 130, 131, 132, 133, 134, 135, 136, 137, 138, 139, 140, 141, 142, 143, 144, 145, 146, 147, 148, 149, 150, 151, 152, 153, 154, 155, 156, 157, 158, 159, 160, 161, 162, 163, 164, 165, 166, 167, 168, 169, 170, 171, 172, 173, 174, 175, 176, 177, 178, 179, 180, 181, 182, 183, 184, 185, 186, 187, 188, 189, 190, 191, 192, 193, 194, 195, 196, 197, 198, 199, 200, 201, 202, 203, 204, 205, 206, 207, 208, 209, 210, 211, 212, 213, 214, 215, 216, 217, 218, 219, 220, 221, 222, 223, 224, 225, 226, 227, 228, 229, 230, 231, 232, 233, 234, 235, 236, 237, 238, 239, 240, 241, 242, 243, 244, 245, 246, 247, 248, 249, 250, 251, 252, 253, 254, 255, 256, 257, 258, 259, 260, 261, 262, 263, 264, 265, 266, 267, 268, 269, 270, 271, 272, 273, 274, 275, 276, 277, 278, 279, 280, 281, 282, 283, 284, 285, 286, 287, 288, 289, 290, 291, 292, 293, 294, 295, 296, 297, 298, 299, 300, 301, 302, 303, 304, 305, 306, 307, 308, 309, 310, 311, 312, 313, 314, 315, 316, 317, 318, 319, 320, 321, 322, 323, 324, 325, 326, 327, 328, 329, 330, 331, 332, 333, 334, 335, 336, 337, 338, 339, 340, 341, 342, 343, 344, 345, 346, 347, 348, 349, 350, 351, 352, 353, 354, 355, 356, 357, 358, 359, 360, 361, 362, 363, 364, 365, 366, 367, 368, 369, 370, 371, 372, 373, 374, 375, 376, 377, 378, 379, 380, 381, 382, 383, 384, 385, 386, 387, 388, 389, 390, 391, 392, 393, 394, 395, 396, 397, 398, 399, 400, 401, 402, 403, 404, 405, 406, 407, 408, 409, 410, 411, 412, 413, 414, 415, 416, 417, 418, 419, 420, 421, 422, 423, 424, 425, 426, 427, 428, 429, 430, 431, 432, 433, 434, 435, 436, 437, 438, 439, 440, 441, 442, 443, 444, 445, 446, 447, 448, 449, 450, 451, 452, 453, 454, 455, 456, 457, 458, 459, 460, 461, 462, 463, 464, 465, 466, 467, 468, 469, 470, 471, 472, 473, 474, 475, 476, 477, 478, 479, 480, 481, 482, 483, 484, 485, 486, 487, 488, 489, 490, 491, 492, 493, 494, 495, 496, 497, 498, 499, 500, 501, 502, 503, 504, 505, 506, 507, 508, 509, 510, 511, 512, 513, 514, 515, 516, 517, 518, 519, 520, 521, 522, 523, 524, 525, 526, 527, 528, 529, 530, 531, 532, 533, 534, 535, 536, 537, 538, 539, 540, 541, 542, 543, 544, 545, 546, 547, 548, 549, 550, 551, 552, 553, 554, 555, 556, 557, 558, 559, 560, 561, 562, 563, 564, 565, 566, 567, 568, 569, 570, 571, 572, 573, 574, 575, 576, 577, 578, 579, 580, 581, 582, 583, 584, 585, 586, 587, 588, 589, 590, 591, 592, 593, 594, 595, 596, 597, 598, 599, 600, 601, 602, 603, 604, 605, 606, 607, 608, 609, 610, 611, 612, 613, 614, 615, 616, 617, 618, 619, 620, 621, 622, 623, 624, 625, 626, 627, 628, 629, 630, 631, 632, 633, 634, 635, 636, 637, 638, 639, 640, 641, 642, 643, 644, 645, 646, 647, 648, 649, 650, 651, 652, 653, 654, 655, 656, 657, 658, 659, 660, 661, 662, 663, 664, 665, 666, 667, 668, 669, 670, 671, 672, 673, 674, 675, 676, 677, 678, 679, 680, 681, 682, 683, 684, 685, 686, 687, 688, 689, 690, 691, 692, 693, 694, 695, 696, 697, 698, 699, 700, 701, 702, 703, 704, 705, 706, 707, 708, 709, 710, 711, 712, 713, 714, 715, 716, 717, 718, 719, 720, 721, 722, 723, 724, 725, 726, 727, 728, 729, 730, 731, 732, 733, 734, 735, 736, 737, 738, 739, 740, 741, 742, 743, 744, 745, 746, 747, 748, 749, 750, 751, 752, 753, 754, 755, 756, 757, 758, 759, 760, 761, 762, 763, 764, 765, 766, 767, 768, 769, 770, 771, 772, 773, 774, 775, 776, 777, 778, 779, 780, 781, 782, 783, 784, 785, 786, 787, 788, 789, 790, 791, 792, 793, 794, 795, 796, 797, 798, 799, 800, 801, 802, 803, 804, 805, 806, 807, 808, 809, 810, 811, 812, 813, 814, 815, 816, 817, 818, 819, 820, 821, 822, 823, 824, 825, 826, 827, 828, 829, 830, 831, 832, 833, 834, 835, 836, 837, 838, 839, 840, 841, 842, 843, 844, 845, 846, 847, 848, 849, 850, 851, 852, 853, 854, 855, 856, 857, 858, 859, 860, 861, 862, 863, 864, 865, 866, 867, 868, 869, 870, 871, 872, 873, 874, 875, 876, 877, 878, 879, 880, 881, 882, 883, 884, 885, 886, 887, 888, 889, 890, 891, 892, 893, 894, 895, 896, 897, 898, 899, 900, 901, 902, 903, 904, 905, 906, 907, 908, 909, 910, 911, 912, 913, 914, 915, 916, 917, 918, 919, 920, 921, 922, 923, 924, 925, 926, 927, 928, 929, 930, 931, 932, 933, 934, 935, 936, 937, 938, 939, 940, 941, 942, 943, 944, 945, 946, 947, 948, 949, 950, 951, 952, 953, 954, 955, 956, 957, 958, 959, 960, 961, 962, 963, 964, 965, 966, 967, 968, 969, 970, 971, 972, 973, 974, 975, 976, 977, 978, 979, 980, 981, 982, 983, 984, 985, 986, 987, 988, 989, 990, 991, 992, 993, 994, 995, 996, 997, 998, 999, 1000*

7.01

ACREAGE DEDICATION FOR GAS WELL
SUBSTANDARD ACREAGE
FEDERAL 28714, WELL #2
CHACON-DAKOTA ASSOCIATED POOL
RIO ARriba COUNTY, NEW MEXICO

Gentlemen:

Mobil Producing TX. & N.M. Inc. (MPTM) is submitting a revised C-102 and requesting approval of a nonstandard acreage dedication of 193 acres for the subject well.

Well #2 was drilled and completed as an oil well on an acreage dedication of 193 acres. The well has since been reclassified as a gas well due to a high gas-oil ratio. The standard acreage dedication for a gas well is 320 acres. This nonstandard unit of 193 acres is necessitated by a variation in the legal subdivision.

Each offset operator on the attached list is being furnished a copy of this letter and attachment by certified mail as notice of this application and request for waiver.

MPTM is requesting that this application be approved administratively under Rule 104 D.II. If administrative approval is not granted, MPTM requests that this application be set for hearing at the earliest date possible.

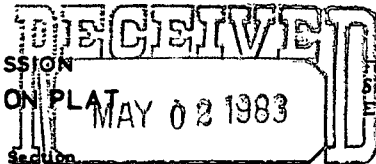
Yours truly,

for W.B. Simmons
J. A. Morris
Regulatory Engineering Supervisor

LSHall/ec
Attachments

cc: NM Oil Conservation Division, Aztec
US Bureau of Land Management, Farmington
Offset Operators (Certified, Return Receipt Requested)

**NEW MEXICO OIL CONSERVATION COMMISSION
WELL LOCATION AND ACREAGE DEDICATION PLAT**



Form C-102
Supersedes C-128
Effective 1-1-65

All distances must be from the outer boundaries of the Section

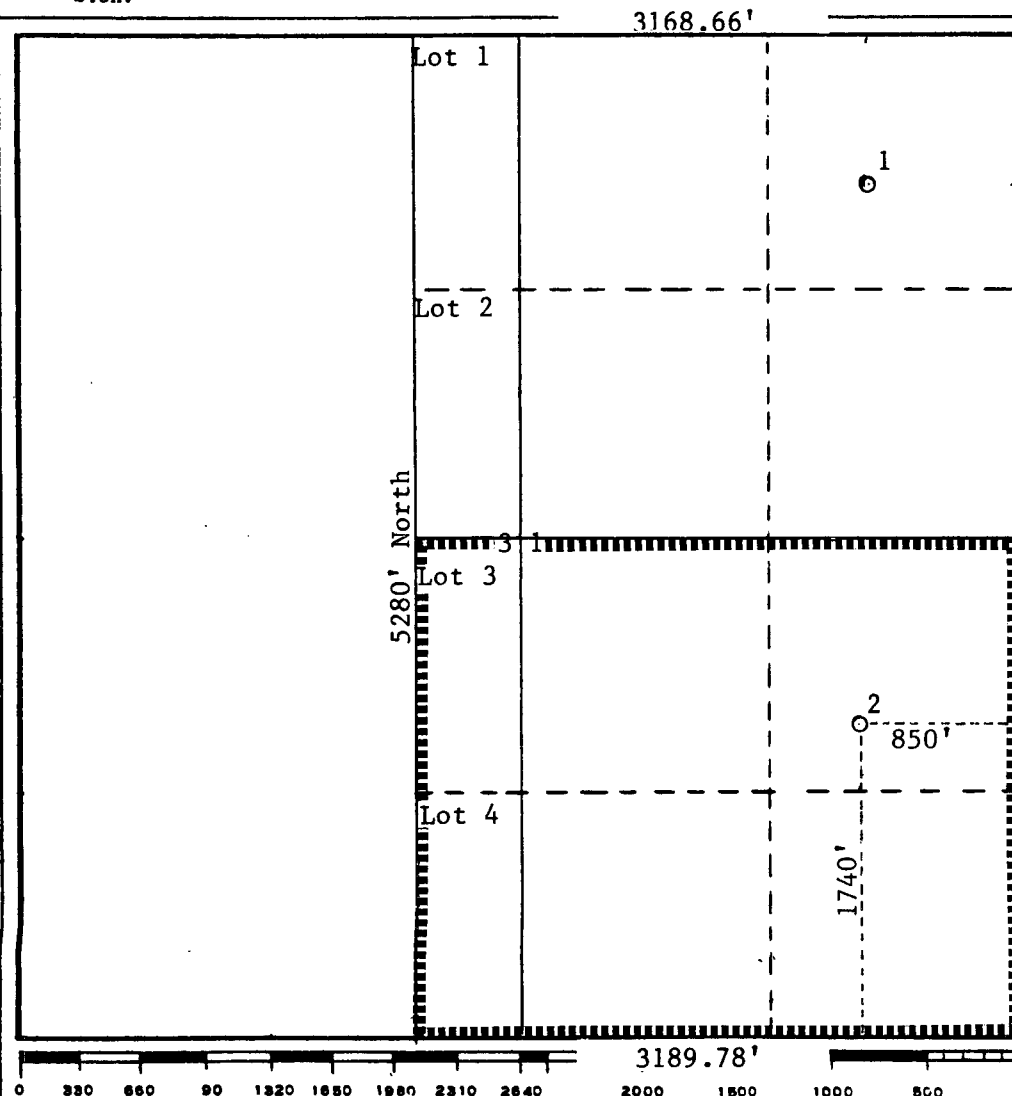
Operator Mobil Producing TX. & N.M. Inc.			Lease Federal 28714		OIL CONSERVATION DIVISION SANTA FE		2	
Unit Letter I	Section 31	Township 24N	Range 3W	County Rio Arriba				
Actual Footage Location of Well: <div style="display: flex; justify-content: space-between;"> 1740 feet from the South line and 850 feet from the East line </div>								
Ground Level Elev. 7346'	Producing Formation Dakota		Pool Chacon-Dakota Associated			Dedicated Acreage: 193 Acres		

1. Outline the acreage dedicated to the subject well by colored pencil or hachure marks on the plat below.
2. If more than one lease is dedicated to the well, outline each and identify the ownership thereof (both as to working interest and royalty).
3. If more than one lease of different ownership is dedicated to the well, have the interests of all owners been consolidated by communitization, unitization, force-pooling, etc?

☐ Yes ☐ No If answer is "yes," type of consolidation _____

If answer is "no," list the owners and tract descriptions which have actually been consolidated. (Use reverse side of this form if necessary.) _____

No allowable will be assigned to the well until all interests have been consolidated (by communitization, unitization, forced-pooling, or otherwise) or until a non-standard unit, eliminating such interests, has been approved by the Commission.



CERTIFICATION

I hereby certify that the information contained herein is true and complete to the best of my knowledge and belief.

A. D. Bond

Name

A. D. Bond

Position **Regulatory**

Engineering Coordinator II

Company **Mobil Producing TX. & NM. Inc.**

Date

April 26, 1983

I hereby certify that the well location shown on this plat was plotted from field notes of actual surveys made by me or under my supervision, and that the same is true and correct to the best of my knowledge and belief.

Date Surveyed

Registered Professional Engineer
and/or Land Surveyor

Certificate No.

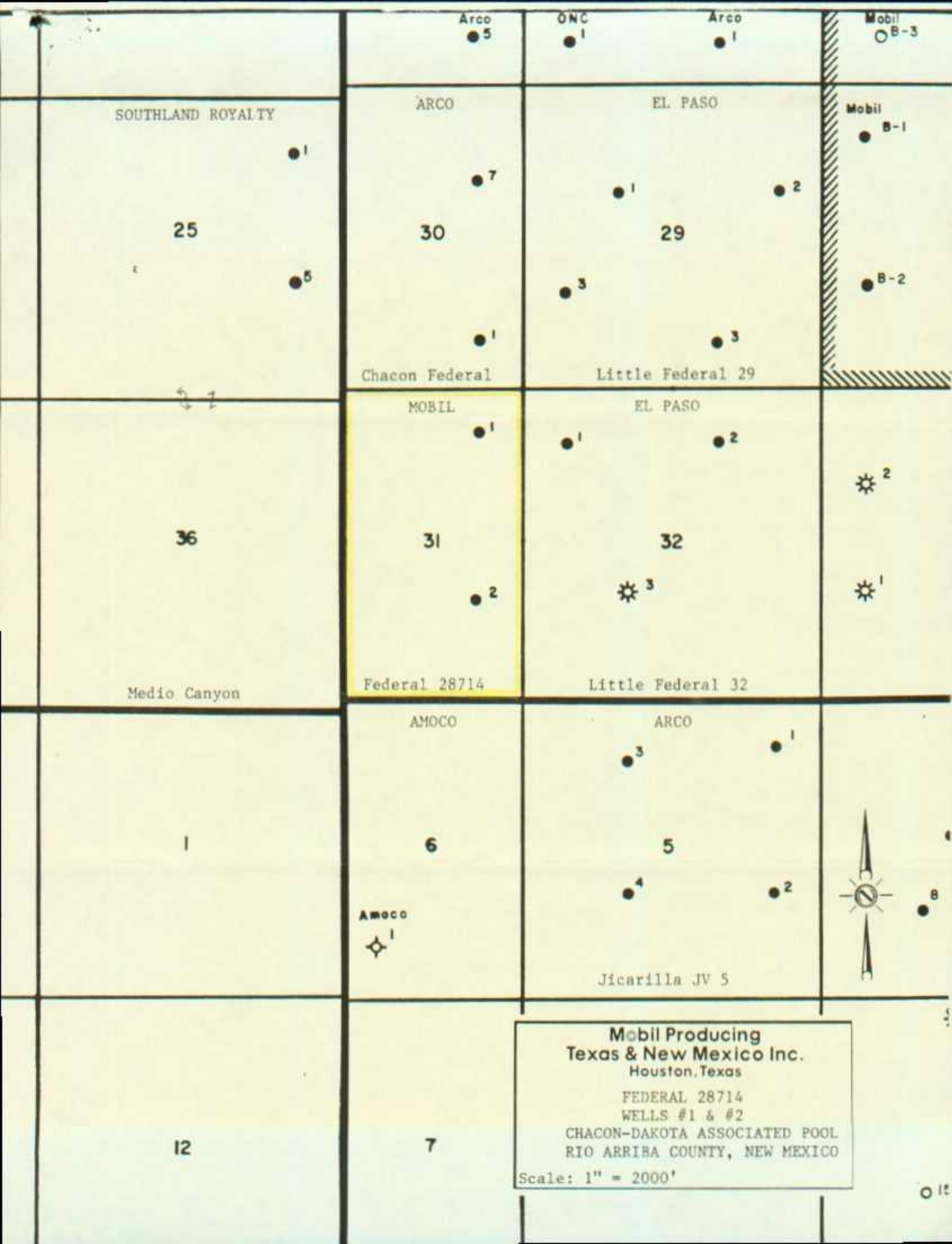
Federal 28714 Lease
Chacon-Dakota Associated Pool
Offset Operators

Amoco Production Company
501 Airport Drive
Farmington, NM 87401

Arco Oil & Gas Company
Box 5540
Denver, CO 80217

El Paso Exploration Company
Box 289
Farmington, NM 87401

Southland Royalty Company
Drawer 570
Farmington, NM 87401



Mobil Producing
Texas & New Mexico Inc.
Houston, Texas

FEDERAL 28714
WELLS #1 & #2
CHACON-DAKOTA ASSOCIATED POOL
RIO ARRIHA COUNTY, NEW MEXICO

Scale: 1" = 2000'

W A I V E R

State of New Mexico
Energy and Minerals Department
Oil Conservation Division
P.O. Box 2088
Santa Fe, NM 87501

Attention Mr. Joe D. Ramey, Director

7.01
ACREAGE DEDICATION FOR GAS WELL
SUBSTANDARD ACREAGE
FEDERAL 28714, WELL #2
CHACON-DAKOTA ASSOCIATED POOL
RIO ARriba COUNTY, NEW MEXICO

Gentlemen:

The undersigned has been furnished a copy of Mobil Producing TX. & N.M. Inc.'s application for a nonstandard acreage dedication of 193 acres for the subject well. The location of Well #2 is I-31-24-03.

Please be informed that we, as an offset operator, have no objection to the Commission approving this application, dated April 26, 1983.

Yours truly,

Company Amoco Production Company
Representative _____
Signature R.B. Giles
Title _____
Date 5-12-83

