

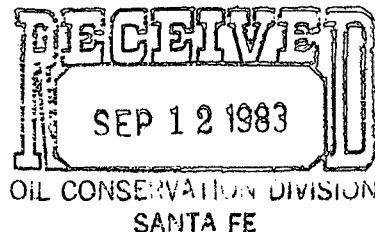


Amoco Production Company (USA)

Post Office Box 68
Hobbs, New Mexico 88240

S. J. Okerson
District Superintendent

September 7, 1983



File: SJO-1723-WF

Re: Application for Non-Standard Proration Units
BDCDGU Wells 2033 011G, 2033 021G, 2033 031G,
2033 041G, 2033 051G, 2034 031G, 2034 041G, 2034 061G
Union and Harding Counties, New Mexico

State of New Mexico
Energy and Minerals Department
Oil Conservation Division
P. O. Box 2088
Santa Fe, NM 87501

*NSP 1405
Rule 104 DII
8 wells
see attachment A*

Attention: Mr. Joe D. Ramey

Gentlemen:

Administrative approval is hereby requested for non-standard proration units for eight wells in our Bravo Dome Carbon Dioxide Gas Unit. The subject eight wells, locations and dedicated acreage are shown on Attachment A.

Our plans are to drill new development wells at the subject locations, which require 160 acres dedication according to NMOCD regulations (Rule 104). The non-standard proration unit is required due to the subject wells being located in "short sections" as evidenced by the attached Form C-102's Acreage Dedication Plats.

The non-standard units consist of quarter-quarter sections that are contiguous by a common bordering side and are located wholly within a single government quarter section. Amoco is the only offset operator, therefore, waivers are not required.

September 7, 1983
File: SJ0-1723-WF
Page 2

I would appreciate your favorable approval of this application. If you have any questions, contact Pete McRae in our Hobbs District Office, at (505) 393-1781.

Yours very truly,

A handwritten signature in cursive script, appearing to read "S. J. Olson". The signature is fluid and extends to the right.

Attachments

Attachment A

<u>Well No.</u>	<u>Location</u>	<u>Dedicated Acreage</u>
2033 011G	1108.8' FNL x 1980' FEL, Sec. 1, T-20-N, R-33-E Harding County, New Mexico <i>Lot 182 & S/2 NE 1/4</i>	107.13
2033 021G	1105.5' FNL x 1980' FEL, Sec. 2, T-20-N, R-33-E Harding County, New Mexico <i>Lot 182 & S/2 NE 1/4</i>	107.07
2033 031G	1083.1' FNL x 1980' FEL, Sec. 3, T-20-N, R-33-E Harding County, New Mexico <i>Lot 182 & S/2 NE 1/4</i>	106.66
2033 041G	1083.1' FNL x 1980' FEL, Sec. 4, T-20-N, R-33-E Harding County, New Mexico <i>Lot 182 and S/2 NE 1/4</i>	106.52
2033 051G	1137.8' FNL x 1780' FEL, Sec. 5, T-20-N, R-33-E Harding County, New Mexico <i>Lot 182 & S/2 NE 1/4</i>	108.90
2034 031G	1069.2' FNL x 1980' FEL, Sec. 3, T-20-N, R-34-E Union County, New Mexico <i>Lot 182 & S/2 NE 1/4</i>	104.87
2034 041G	1073.8' FNL x 1980' FEL, Sec. 4, T-20-N, R-34-E Union County, New Mexico <i>Lot 182 & S/2 NE 1/4</i>	105.18
2034 061G	1062.6' FNL x 1980' FEL, Sec. 6, T-20-N, R-34-E Union County, New Mexico <i>Lot 182 & S/2 NE 1/4</i>	105.10

NEW MEXICO OIL CONSERVATION COMMISSION
WELL LOCATION AND ACREAGE DEDICATION PLAT

Form C-165
Supersedes C-124
Effective 1-1-61

All distances must be from the outer boundaries of the Section

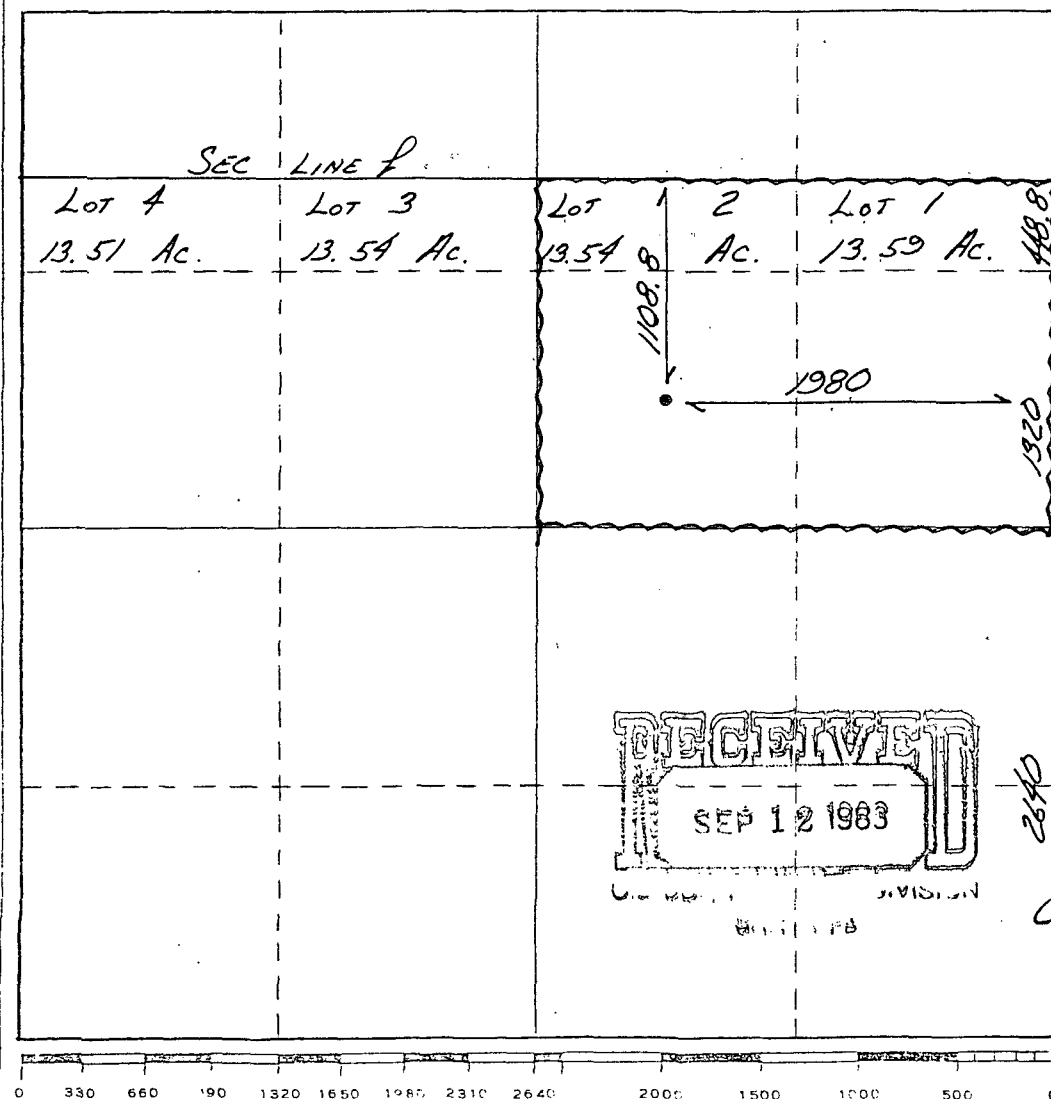
Operator AMOCO		Lease Bravo Dome Carbon Dioxide Gas Unit		Well No. 20330116
Unit Letter G	Section 1	Township T20N	Range R33E	County HARDING
Actual Footage Location of Well: 1108.8 feet from the NORTH line and 1980 feet from the EAST line				
Ground Level Elev. 4908	Producing Formation Tubb		Pool Und. Tubb	Dedicated Acreage: 107.13 Acres

1. Outline the acreage dedicated to the subject well by colored pencil or hachure marks on the plat below.
2. If more than one lease is dedicated to the well, outline each and identify the ownership thereof (both as to working interest and royalty).
3. If more than one lease of different ownership is dedicated to the well, have the interests of all owners been consolidated by communitization, unitization, force-pooling, etc?

☐ Yes ☐ No If answer is "yes," type of consolidation _____

If answer is "no," list the owners and tract descriptions which have actually been consolidated. (Use reverse side of this form if necessary.) _____

No allowable will be assigned to the well until all interests have been consolidated (by communitization, unitization, forced-pooling, or otherwise) or until a non-standard unit, eliminating such interests, has been approved by the Commission.



CERTIFICATION

I hereby certify that the information contained herein is true and complete to the best of my knowledge and belief.

Name
Peter J. Serna

Position
Assist. Admin. Analyst

Company
Amoco Production Company

Date
9-2-83

I hereby certify that the well location shown on this plat was plotted from field notes of actual surveys made by me or under my supervision, and that the same is true and correct to the best of my knowledge and belief.

Date Surveyed
JUNE 24 1983

Registered Professional Engineer and/or Land Surveyor
N.M. E. SHIELDS

Certificate No.

NEW MEXICO OIL CONSERVATION COMMISSION
WELL LOCATION AND ACREAGE DEDICATION PLAT

Form C-102
Supersedes C-124
Effective 1-1-65

All distances must be from the outer boundaries of the Section

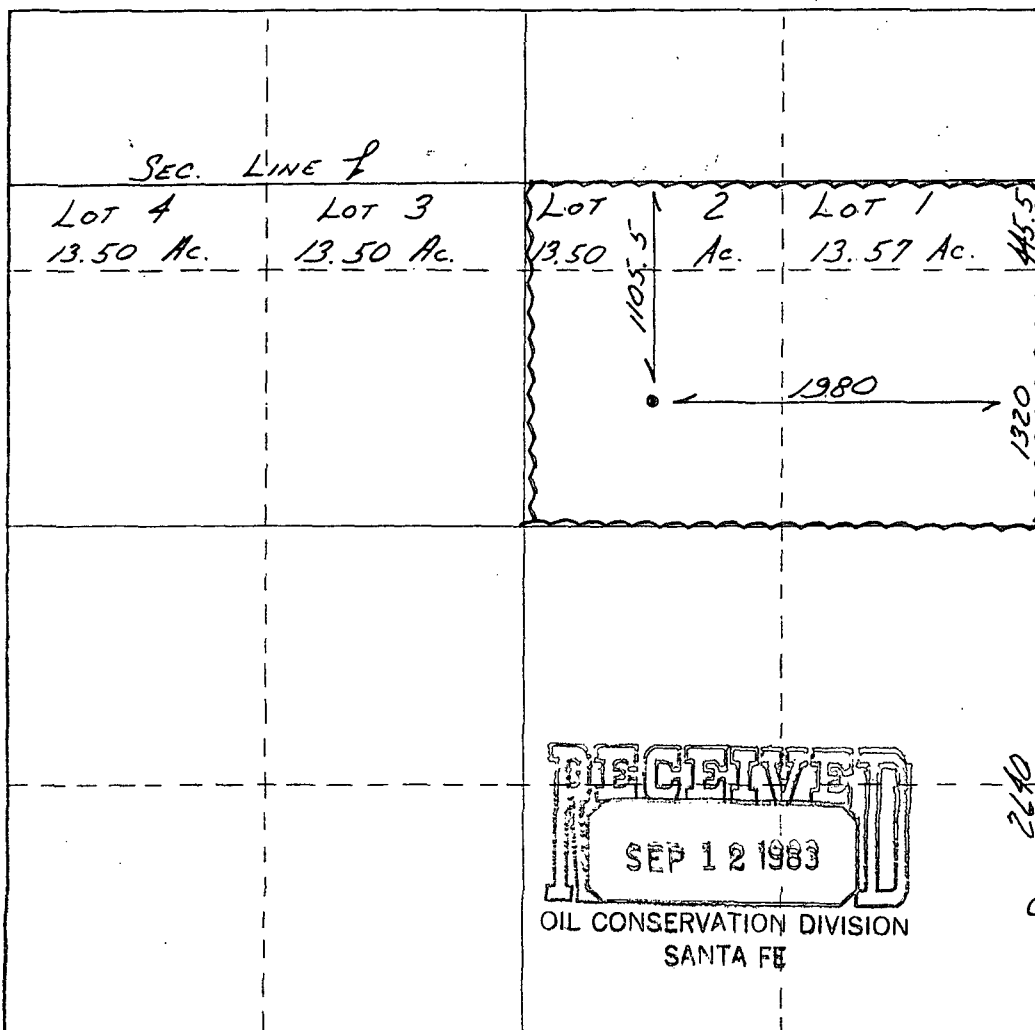
Operator AMOCO		Lease Bravo Dome Carbon Dioxide Gas Unit		Well No. 2033021G
Unit Letter G	Section 2	Township T20N	Range R33 E	County HARDING
Actual Footage Location of Well: 1105.5 feet from the NORTH line and 1980 feet from the EAST line				
Ground Level Elev: 4987	Producing Formation Tubb	Pool Und. Tubb	Dedicated Acreage: 107.07 Acres	

1. Outline the acreage dedicated to the subject well by colored pencil or hachure marks on the plat below.
2. If more than one lease is dedicated to the well, outline each and identify the ownership thereof (both as to working interest and royalty).
3. If more than one lease of different ownership is dedicated to the well, have the interests of all owners been consolidated by communitization, unitization, force-pooling, etc?

☐ Yes ☐ No If answer is "yes," type of consolidation _____

If answer is "no," list the owners and tract descriptions which have actually been consolidated. (Use reverse side of this form if necessary.) _____

No allowable will be assigned to the well until all interests have been consolidated (by communitization, unitization, forced-pooling, or otherwise) or until a non-standard unit, eliminating such interests, has been approved by the Commission.



RECEIVED
SEP 12 1983
OIL CONSERVATION DIVISION
SANTA FE

CERTIFICATION

I hereby certify that the information contained herein is true and complete to the best of my knowledge and belief.

Name
Peter J. Serna
Position
Assist. Admin. Analyst
Company
Amoco Production Company
Date
9-2-83

I hereby certify that the well location shown on this plat was plotted from field notes of actual surveys made by me or under my supervision, and that the same is true and correct to the best of my knowledge and belief.

Date Surveyed
JUN 24 1983
Registered Professional Engineer and/or Land Surveyor
N.M. REG. E. SHIELDS 103
Certificate No.

0 330 660 990 1320 1650 1980 2310 2640 2000 1500 1000 500 0

NEW MEXICO OIL CONSERVATION COMMISSION
WELL LOCATION AND ACREAGE DEDICATION PLAT

Form C-121
Supersedes C-120
Effective 1-1-61

All distances must be from the outer boundaries of the Section.

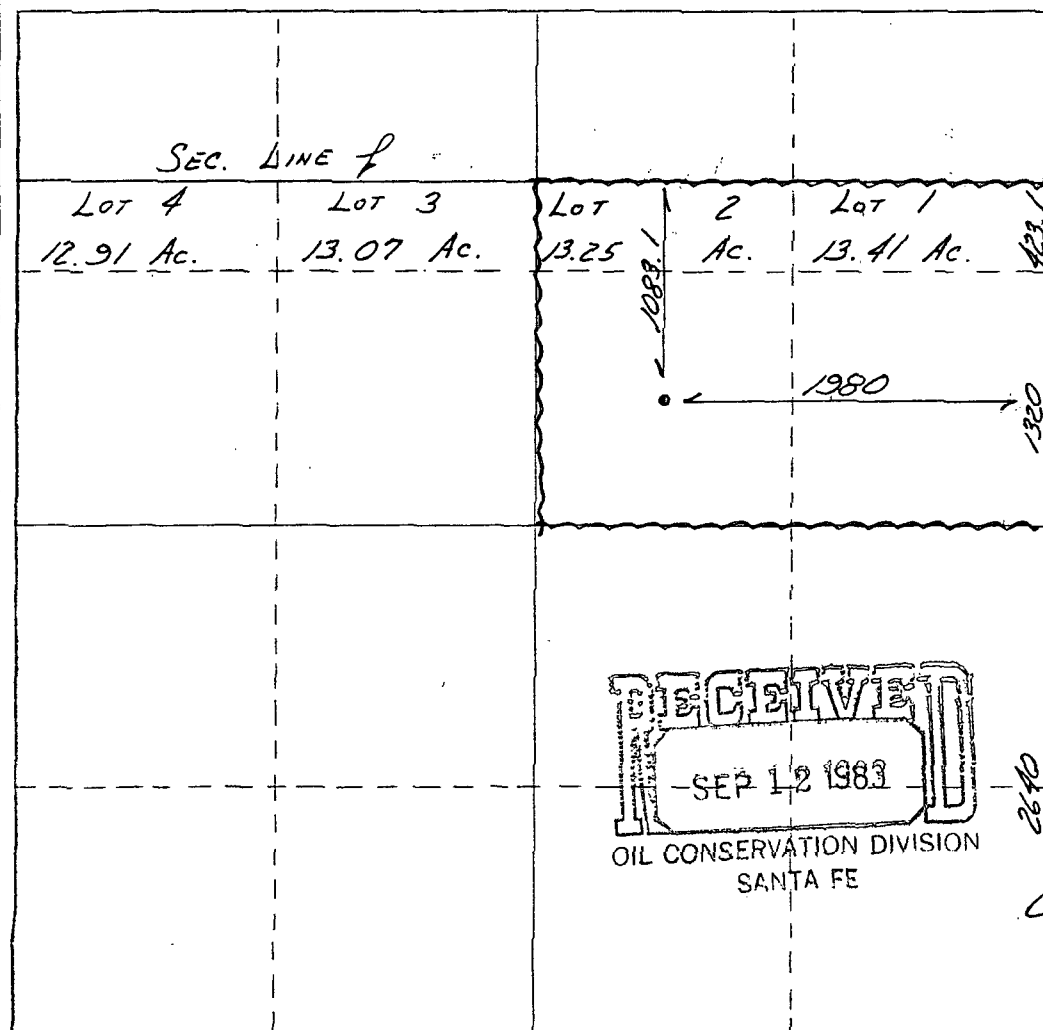
Operator: AMOCO			Lease: Bravo Dome Carbon Dioxide Gas Unit			Well No.: 2033031G		
Unit Letter: G	Section: 3	Township: T20N	Range: R33E	County: HARDING				
Actual Footage Location of Well: 1083.1 feet from the NORTH line and 1980 feet from the EAST line								
Ground Level Elev.: 5055	Producing Formation: Tubb		Pool: Und. Tubb			Dedicated Acreage: 106.66 Acres		

1. Outline the acreage dedicated to the subject well by colored pencil or hachure marks on the plat below.
2. If more than one lease is dedicated to the well, outline each and identify the ownership thereof (both as to working interest and royalty).
3. If more than one lease of different ownership is dedicated to the well, have the interests of all owners been consolidated by communitization, unitization, force-pooling, etc?

☐ Yes ☐ No If answer is "yes," type of consolidation _____

If answer is "no," list the owners and tract descriptions which have actually been consolidated. (Use reverse side of this form if necessary.) _____

No allowable will be assigned to the well until all interests have been consolidated (by communitization, unitization, forced-pooling, or otherwise) or until a non-standard unit, eliminating such interests, has been approved by the Commission.



CERTIFICATION

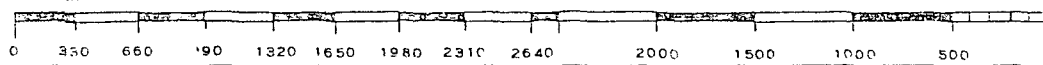
I hereby certify that the information contained herein is true and complete to the best of my knowledge and belief.

Name: Peter J. Serna
Position: Assist. Admin. Analyst
Company: Amoco Production Company
Date: 9-2-83

I hereby certify that the well location shown on this plat was plotted from field notes of actual surveys made by me or under my supervision, and that the same is true and correct to the best of my knowledge and belief.

DATE SURVEYED: JUNE 28 1983
REGISTERED PROFESSIONAL ENGINEER AND/OR LAND SURVEYOR:
N. E. SHERIDAN 5103

Certificate No. _____



NEW MEXICO OIL CONSERVATION COMMISSION
WELL LOCATION AND ACREAGE DEDICATION PLAT

Form C-100
Supersedes C-112
Effective 1-1-81

All distances must be from the outer boundaries of the Section.

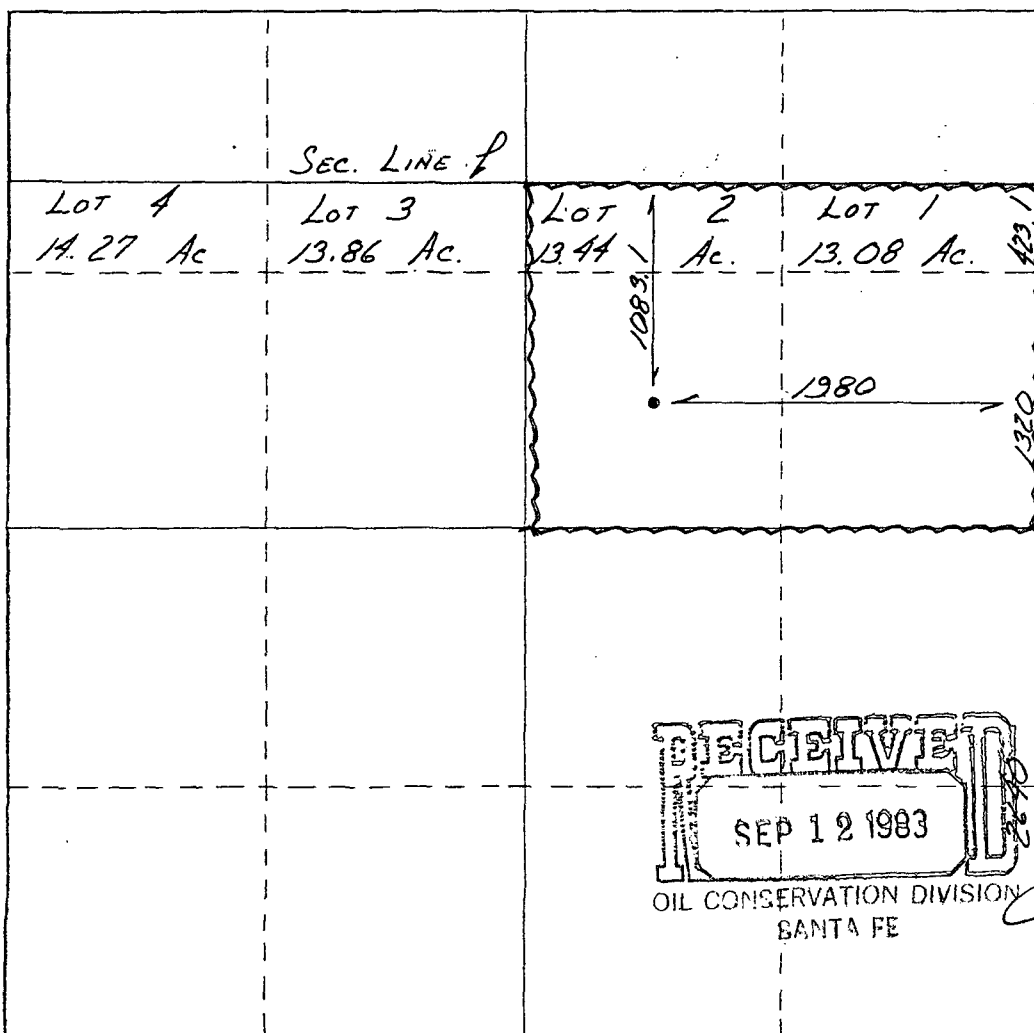
Operator AMOCO			Lease Bravo Dome Carbon Dioxide Gas Unit		Well No. 2033041G
Unit Letter G	Section 4	Township T20N	Range R33E	County HARDING	
Actual Footage Location of Well:					
1083.1 feet from the NORTH line and		1980 feet from the EAST line			
Ground Level Elev. 5080	Producing Formation Tubb	Pool Und. Tubb	Dedicated Acreage: 106.52 Acres		

1. Outline the acreage dedicated to the subject well by colored pencil or hachure marks on the plat below.
2. If more than one lease is dedicated to the well, outline each and identify the ownership thereof (both as to working interest and royalty).
3. If more than one lease of different ownership is dedicated to the well, have the interests of all owners been consolidated by communitization, unitization, force-pooling, etc?

☐ Yes ☐ No If answer is "yes," type of consolidation _____

If answer is "no," list the owners and tract descriptions which have actually been consolidated. (Use reverse side of this form if necessary.) _____

No allowable will be assigned to the well until all interests have been consolidated (by communitization, unitization, forced-pooling, or otherwise) or until a non-standard unit, eliminating such interests, has been approved by the Commission.



CERTIFICATION

I hereby certify that the information contained herein is true and complete to the best of my knowledge and belief.

Name **Peter J. Sena**
Position **Assist. Admin. Analyst**
Company **Amoco Production Company**
Date **9-2-83**

I hereby certify that the well location shown on this plat was plotted from field notes of actual surveys made by me or under my supervision, and that the same is true and correct to the best of my knowledge and belief.

Date **SEP 12 1983**
Registered Professional Engineer and/or Land Surveyor
N.M. 103
Certificate No.

0 330 660 990 1320 1650 1980 2310 2640 2970 3300 3630 3960 4290 4620 4950 5280 5610 5940 6270 6600

NEW MEXICO OIL CONSERVATION COMMISSION
WELL LOCATION AND ACREAGE DEDICATION PLAT

Form O-101
Supersedes O-101
Effective 1-1-61

All distances must be from the outer boundaries of the Section.

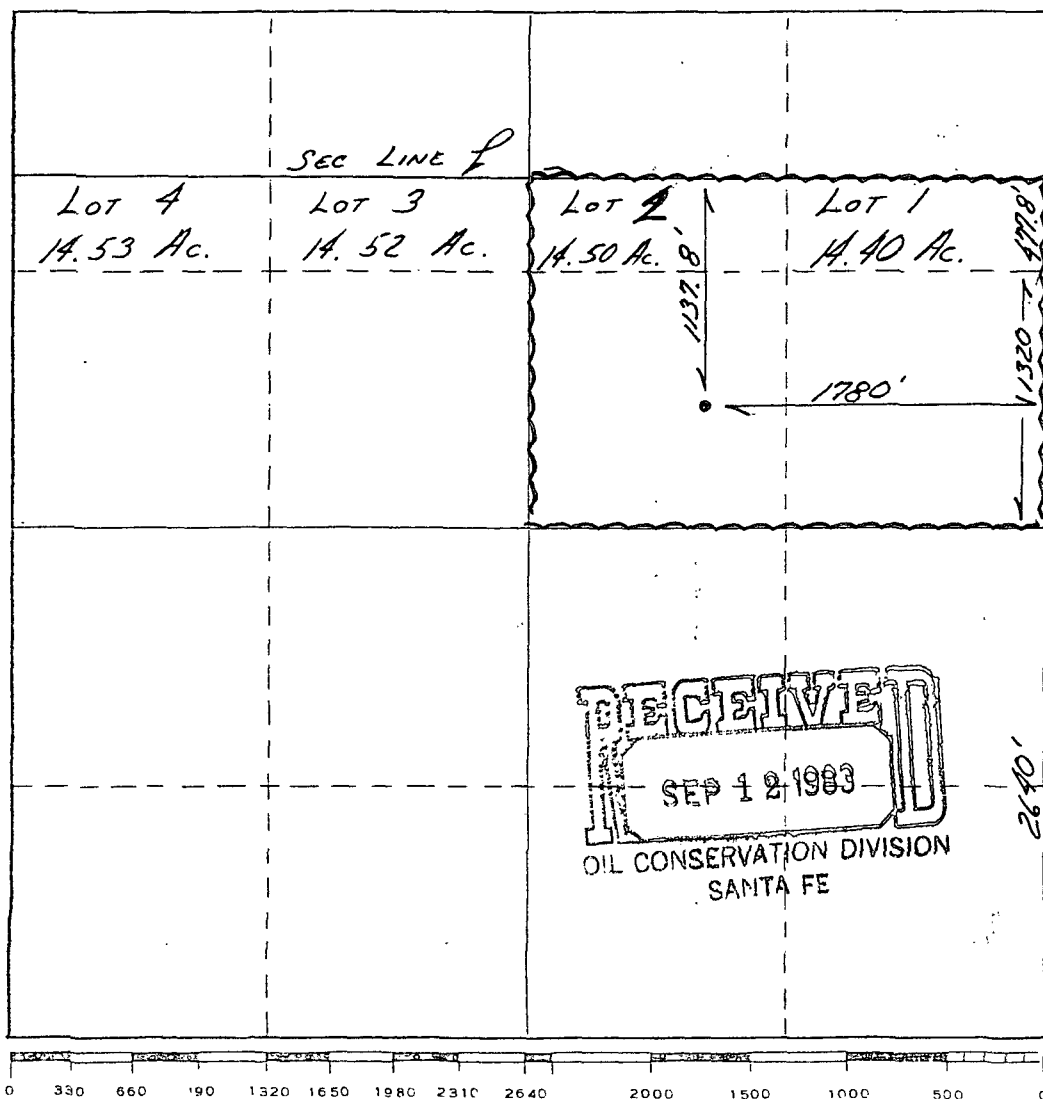
Operator: AMOCO		Lease: Bravo Dome Carbon Dioxide Gas Unit		Well No.: 2033051G
Unit Letter: G	Section: 5	Township: T20N	Range: R33E	County: HARDING
Actual Footage Location of Well: 1137.8 feet from the NORTH line and 1780 feet from the EAST line				
Ground Level Elev.: 5113	Producing Formation: Tubb		Pool: Und. Tubb	Dedicated Acreage: 108.90 Acres

1. Outline the acreage dedicated to the subject well by colored pencil or hachure marks on the plat below.
2. If more than one lease is dedicated to the well, outline each and identify the ownership thereof (both as to working interest and royalty).
3. If more than one lease of different ownership is dedicated to the well, have the interests of all owners been consolidated by communitization, unitization, force-pooling, etc?

☐ Yes ☐ No If answer is "yes," type of consolidation _____

If answer is "no," list the owners and tract descriptions which have actually been consolidated. (Use reverse side of this form if necessary.) _____

No allowable will be assigned to the well until all interests have been consolidated (by communitization, unitization, forced-pooling, or otherwise) or until a non-standard unit, eliminating such interests, has been approved by the Commission.



CERTIFICATION

I hereby certify that the information contained herein is true and complete to the best of my knowledge and belief.

Name: Pietro J. Serna
Position: Assist. Admin. Analyst
Company: Amoco Production Company
Date: 9-2-83

I hereby certify that the well location shown on this plat was plotted from field notes of actual surveys made by me or under my supervision, and that the same is true and correct to the best of my knowledge and belief.

Date of Survey: SEP 2 1983
Registered Professional Engineer and/or Land Surveyor:
N. M. E. SHIELDS
Certificate No. 103

NEW MEXICO OIL CONSERVATION COMMISSION
WELL LOCATION AND ACREAGE DEDICATION PLAT

Form C-107
Supersedes 1-127
Effective 1-1-81

All distances must be from the outer boundaries of the Section.

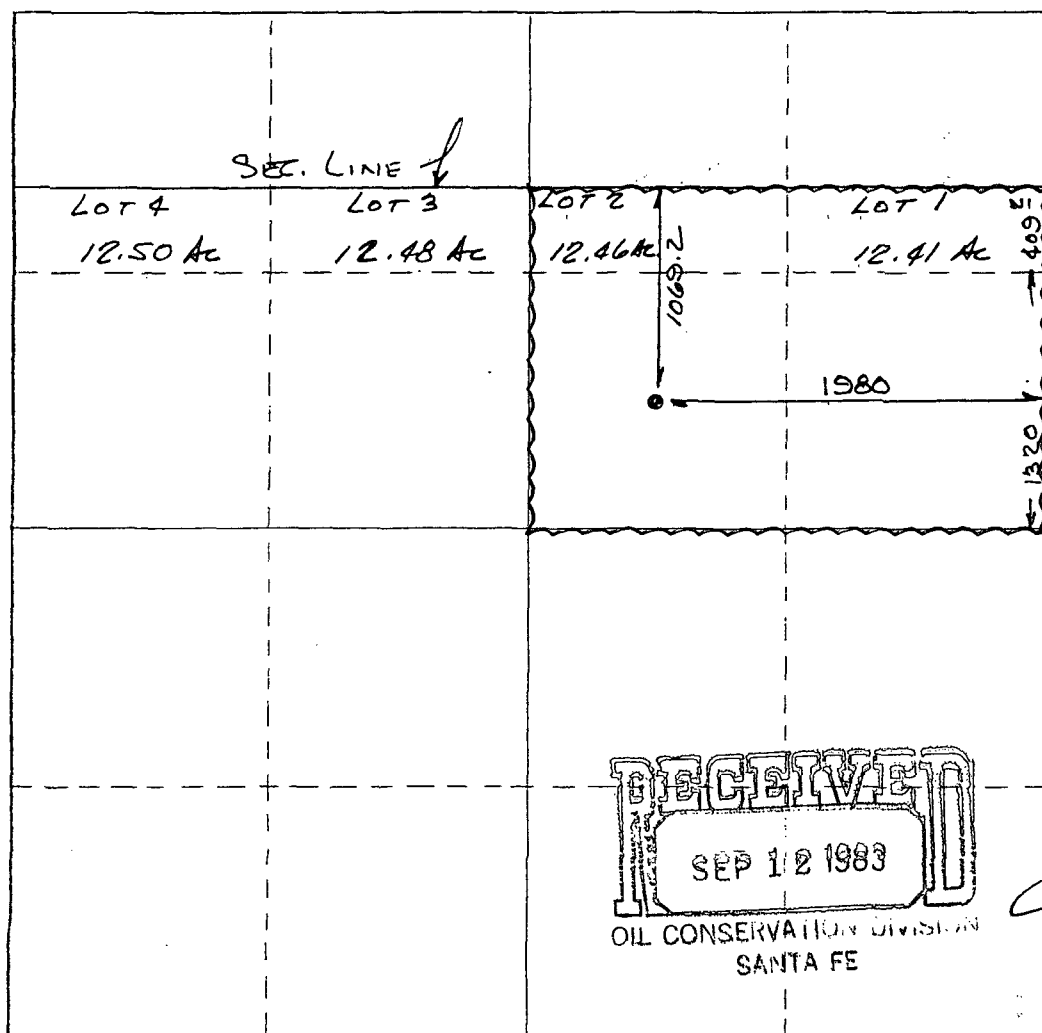
Operator AMOCO		Lease Bravo Dome Carbon Dioxide Gas Unit		Well No. 2034 031G
Unit Letter G	Section 3	Township T20N	Range R34E	County UNION
Actual Footage Location of Well: 1069.2 feet from the NORTH line and 1980 feet from the EAST line				
Ground Level Elev. 4822	Producing Formation Tubb	Pool Und. Tubb	Dedicated Acreage: 104.87 Acres	

1. Outline the acreage dedicated to the subject well by colored pencil or hachure marks on the plat below.
2. If more than one lease is dedicated to the well, outline each and identify the ownership thereof (both as to working interest and royalty).
3. If more than one lease of different ownership is dedicated to the well, have the interests of all owners been consolidated by communitization, unitization, force-pooling, etc?

☐ Yes ☐ No If answer is "yes," type of consolidation _____

If answer is "no," list the owners and tract descriptions which have actually been consolidated. (Use reverse side of this form if necessary.) _____

No allowable will be assigned to the well until all interests have been consolidated (by communitization, unitization, forced-pooling, or otherwise) or until a non-standard unit, eliminating such interests, has been approved by the Commission.



CERTIFICATION

I hereby certify that the information contained herein is true and complete to the best of my knowledge and belief.

Name Peter J. Senia
Position Assist. Admin. Analyst
Company Amoco Production Company
Date 9-2-83

I hereby certify that the well location shown on this plat was plotted from field notes of actual surveys made by me or under my supervision, and that the same is true and correct to the best of my knowledge and belief.

RECEIVED
SEP 12 1983
OIL CONSERVATION DIVISION
SANTA FE

Date of Registration 12-1-82
Registered Professional Engineer and/or Land Surveyor
N.M. E. SHIELDS 103
Certificate No. _____

0 330 660 990 1320 1650 1980 2310 2640 2000 1500 1000 500 0

NEW MEXICO OIL CONSERVATION COMMISSION
WELL LOCATION AND ACREAGE DEDICATION PLAT

Form C-101
Supersedes C-101
Effective 1-1-77

All distances must be from the outer boundaries of the Section.

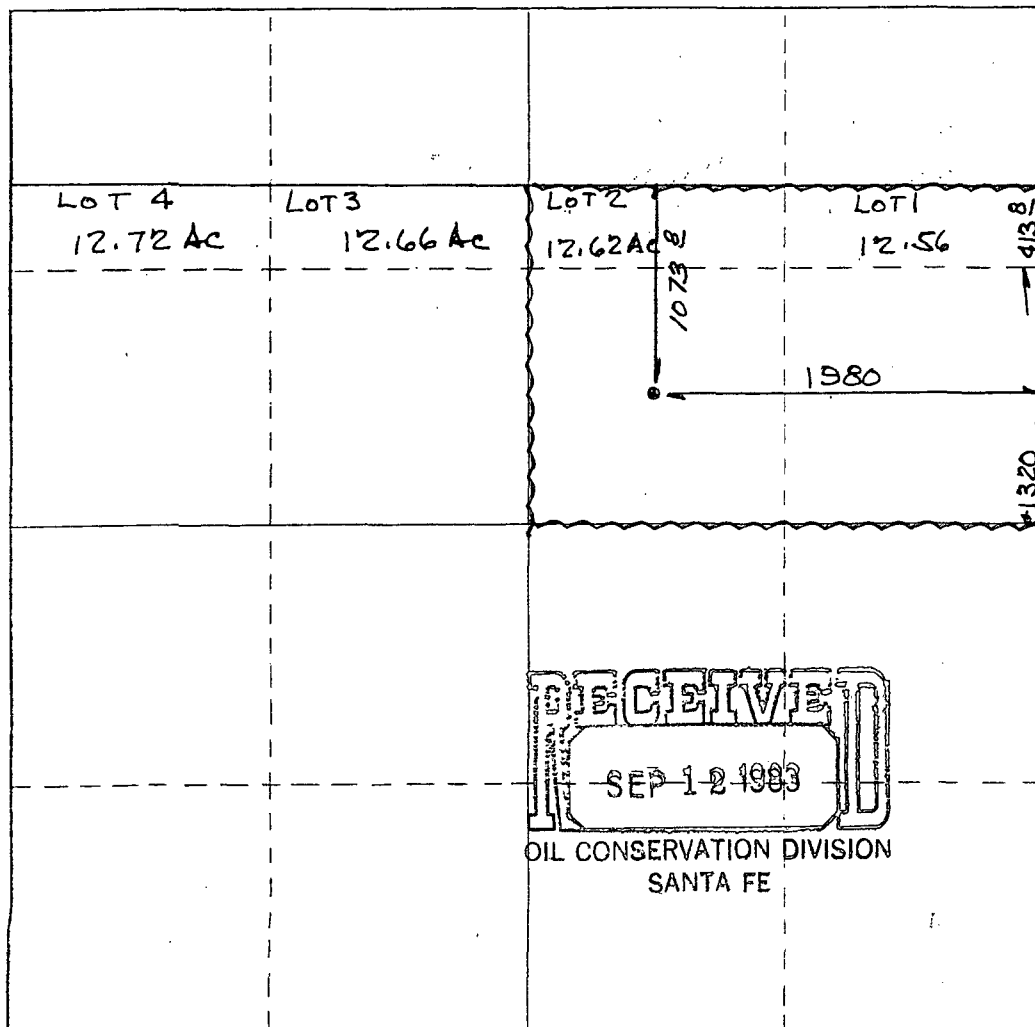
Operator AMOCO		Lease Bravo Dome Carbon Dioxide Gas Unit		Well No. 2034041G
Unit Letter G	Section 4	Township T20N	Range R34E	County UNION
Actual Footage Location of Well: 073.8 feet from the NORTH line and 1980 feet from the EAST line				
Ground Level Elev. 4875	Producing Formation Tubb	Pool Und. Tubb	Dedicated Acreage: 105.18 Acres	

1. Outline the acreage dedicated to the subject well by colored pencil or hachure marks on the plat below.
2. If more than one lease is dedicated to the well, outline each and identify the ownership thereof (both as to working interest and royalty).
3. If more than one lease of different ownership is dedicated to the well, have the interests of all owners been consolidated by communitization, unitization, force-pooling, etc?

☐ Yes ☐ No If answer is "yes," type of consolidation _____

If answer is "no," list the owners and tract descriptions which have actually been consolidated. (Use reverse side of this form if necessary.) _____

No allowable will be assigned to the well until all interests have been consolidated (by communitization, unitization, forced-pooling, or otherwise) or until a non-standard unit, eliminating such interests, has been approved by the Commission.



CERTIFICATION

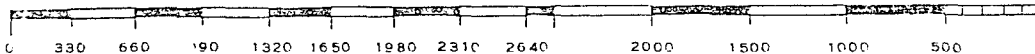
I hereby certify that the information contained herein is true and complete to the best of my knowledge and belief.

Name **Peter J. Serna**
Position **Assist. Admin. Analyst**
Company **Amoco Production Company**
Date **9-2-83**

I hereby certify that the well location shown on this plat was plotted from field notes of actual surveys made by me or under my supervision, and that the same is true and correct to the best of my knowledge and belief.

DATE SURVEYED **JUNE 1983**
REGISTERED PROFESSIONAL ENGINEER
AND/OR LAND SURVEYOR
N.M. E. SHIELDS 5103

Certificate No.



NEW MEXICO OIL CONSERVATION COMMISSION
WELL LOCATION AND ACREAGE DEDICATION PLAT

Form C-10
Supersedes C-1
Effective 1-1-77

All distances must be from the outer boundaries of the Section.

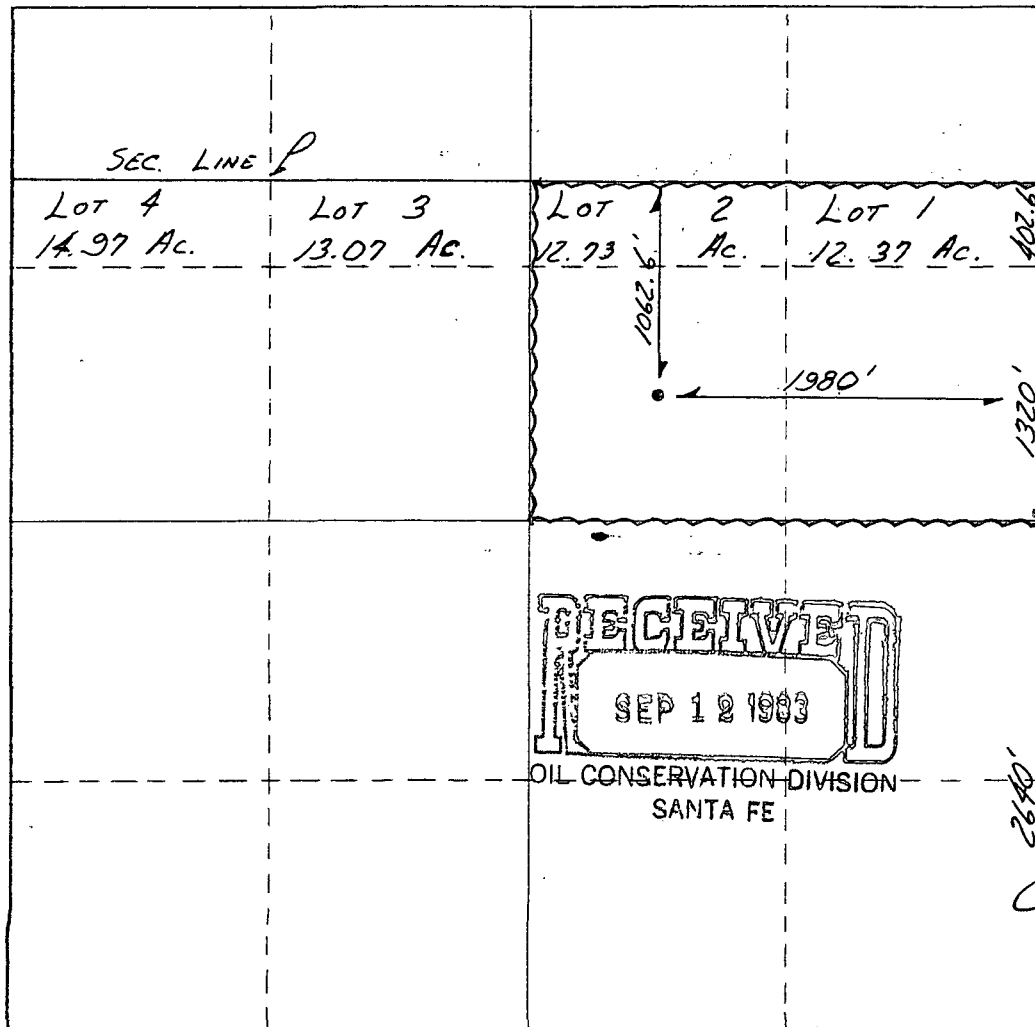
Operator: AMOCO		Lease: Bravo Dome Carbon Dioxide Gas Unit		Well No. 2034061G
Unit Letter G	Section 6	Township T20N	Range R34E	County UNION
Actual Footage Location of Well: 1062.6 feet from the NORTH line and 1980 feet from the EAST line				
Ground Level Elev. 4883	Producing Formation Tubb	Pool Und. Tubb	Dedicated Acreage: 105.10 Acres	

1. Outline the acreage dedicated to the subject well by colored pencil or hachure marks on the plat below.
2. If more than one lease is dedicated to the well, outline each and identify the ownership thereof (both as to working interest and royalty).
3. If more than one lease of different ownership is dedicated to the well, have the interests of all owners been consolidated by communitization, unitization, force-pooling, etc?

☐ Yes ☐ No If answer is "yes," type of consolidation _____

If answer is "no," list the owners and tract descriptions which have actually been consolidated. (Use reverse side of this form if necessary.) _____

No allowable will be assigned to the well until all interests have been consolidated (by communitization, unitization, forced-pooling, or otherwise) or until a non-standard unit, eliminating such interests, has been approved by the Commission.



CERTIFICATION

I hereby certify that the information contained herein is true and complete to the best of my knowledge and belief.

Name Peter J. Serna
Position Assist. Admin. Analyst
Company Amoco Production Company
Date 9-2-83

I hereby certify that the well location shown on this plat was plotted from field notes of actual surveys made by me or under my supervision, and that the same is true and correct to the best of my knowledge and belief.

Date Surveyed SEP 20, 1983
Registered Professional Engineer
N. M. E. SNIENOS 5103

Certificate No.