

By SPQ

# Gulf Oil Exploration and Production Company

R. C. Anderson  
PRODUCTION MANAGER.  
HOBBS AREA

January 27, 1984

P. O. Box 670  
Hobbs, NM 88240

Re: Application for a 120-Acre, Non Standard  
Gas Proration Unit, Tubb Gas Pool,  
Comprising the W/2 of NW/4 & SE/4 of  
NW/4 of Section 30-T22S-R38E

NSP. 1421

ORDER R-6012 RULE 5(C)3

RELEASE IMMEDIATELY

TUBB OIL & GAS POOL

Joe D. Ramey  
Oil Conservation Division  
P. O. Box 2088  
Santa Fe, New Mexico 87501

**FEE ACREAGE**

RECEIVED  
FEB - 1 1984  
OIL CONSERVATION DIVISION  
SANTA FE

Gentlemen:

Gulf Oil Corporation requests administrative approval for a 120-Acre Non-Standard Gas Proration Unit in the Tubb Gas Pool, comprising the W/2 of NW/4 & SE/4 of NW/ of Section 30-T22S-R38E, Lea County, New Mexico, to be assigned to Gulf's Vivian #13 well. In support thereof, Gulf Oil Corporation states the following facts:

1. The proposed Non-Standard Gas Proration Unit will meet the requirements of Rule 5(c) of the Oil Conservation Division Order No. R-1670 as follows:
  - a. The proposed Non-Standard 120-Acre Proration Unit consists of less acreage than a standard 160-acre proration unit.
  - b. The Non-Standard Gas 120-Acre Proration Unit consists of contiguous quarter-quarter sections.
  - c. The Non-Standard 120-Acre Proration Unit lies wholly within a single government section in the Tubb Gas Pool with 160-acre standard proration units.
  - d. The entire Non-Standard 120-Acre Gas Proration Unit may be reasonably presumed to be productive of gas from the Tubb Pool.
  - e. The length or width of the Non-Standard Gas Proration Unit does not exceed 5280 feet.
  - f. This letter will serve as notification to all operators owning interest in the section containing the proposed Non-Standard 120-Acre Proration Unit and all operators within 1500 feet of the Vivian #13 Well.



A DIVISION OF GULF OIL CORPORATION

Joe D. Ramay

-2-

1-27-84

In view of the above facts, Gulf Oil Corporation requests that administrative approval of the subject 120-Acre Non-Standard Proration Unit be granted.

Yours very truly,



R. C. ANDERSON

DCE/skc

cc: Oil Conservation Division  
P. O. Box 1980  
Hobbs, New Mexico 88240

REGISTERED MAIL - RETURN RECEIPT REQUESTED:

Marathon Oil Co.  
P. O. Box 552  
Midland, Texas 79702

Texaco, Inc.  
P. O. Box 3109  
Midland, Texas 79701

Summit Energy Co.  
1925 Mercantile  
Dallas Bldg.  
Dallas, Texas 75201

**NEW MEXICO OIL CONSERVATION COMMISSION  
WELL LOCATION AND ACREAGE DEDICATION PLAT**

Form C-102  
Supersedes C-128  
Effective 1-1-83

All distances must be from the outer boundaries of the Section

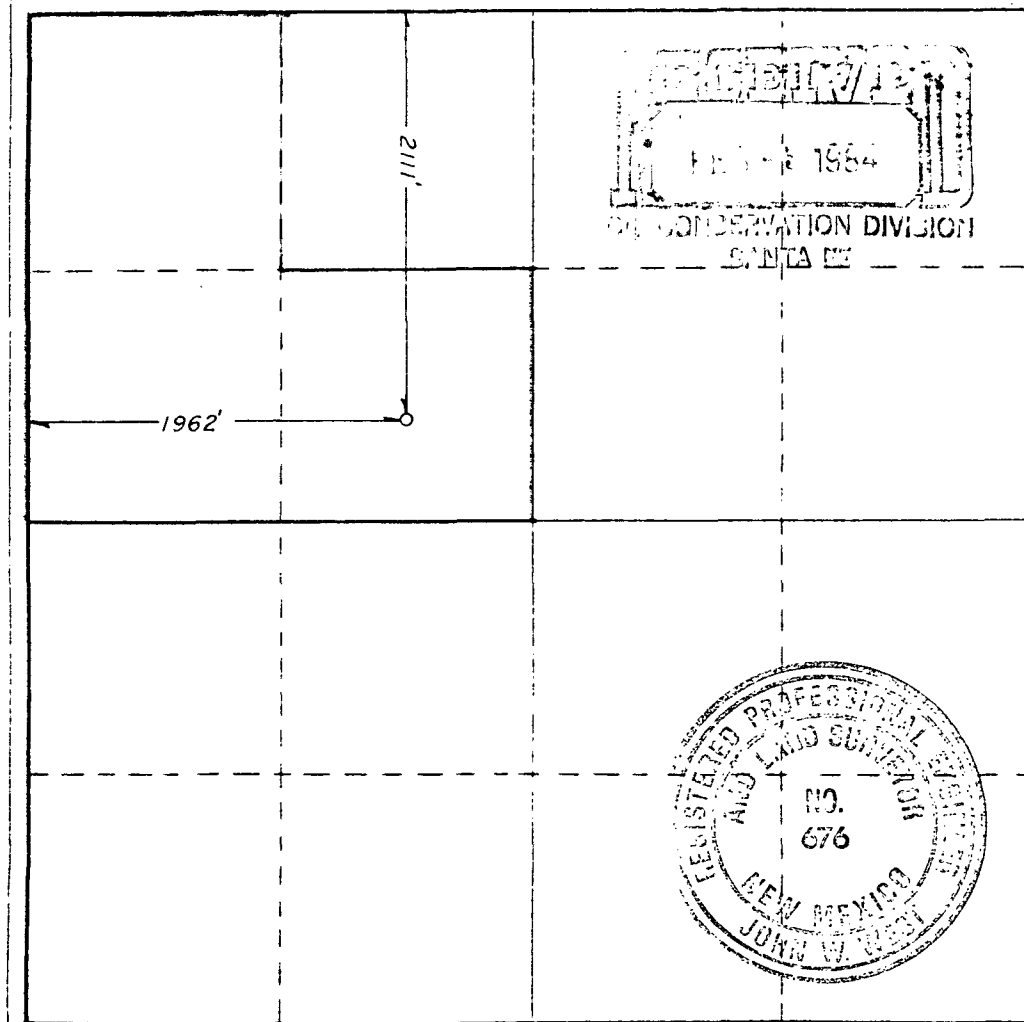
Operator <b>GULF OIL CORP.</b>			Lessee <b>VIVIAN</b>		Well No. <b>13</b>
Tract Letter <b>F</b>	Section <b>30</b>	Township <b>22S</b>	Range <b>38E</b>	County <b>LEA</b>	
Actual Footage Location of Well:					
<b>2111</b> feet from the <b>NORTH</b> line and <b>1962</b> feet from the <b>WEST</b> line					
Ground Level Elev. <b>3335.5</b>	Producing Formation <i>Suble</i>	Pool <i>Suble</i>	Dedicated Acreage <b>120</b>		

1. Outline the acreage dedicated to the subject well by colored pencil or machine marks on the plat below.
2. If more than one lease is dedicated to the well, outline each and identify the ownership thereof (both as to working interest and royalty).
3. If more than one lease of different ownership is dedicated to the well, have the interests of all owners been consolidated by communitization, unitization, force-pooling, etc?

☐ Yes    ☐ No    If answer is "yes," type of consolidation \_\_\_\_\_

If answer is "no," list the owners and tract descriptions which have actually been consolidated (Use reverse side of this form if necessary.) \_\_\_\_\_

No allowable will be assigned to the well until all interests have been consolidated (by communitization, unitization, forced-pooling, or otherwise) or until a non-standard unit, eliminating such interests, has been approved by the Commission.



**CERTIFICATION**

I hereby certify that the information contained herein is true and complete to the best of my knowledge and belief.

*L. M. Rydman*

for **R.C. ANDERSON**

**AREA PROD MGR**

**GULF OIL CORP**

**1-27-84**

I hereby certify that the well location shown on this plat was plotted from field notes of actual surveys made by me or under my supervision, and that the same is true and correct to the best of my knowledge and belief.

Date Surveyed

**1/24/84**

Registered Professional Engineer and Land Surveyor

*John W. West*

Certificate No. **JOHN W. WEST, 576**

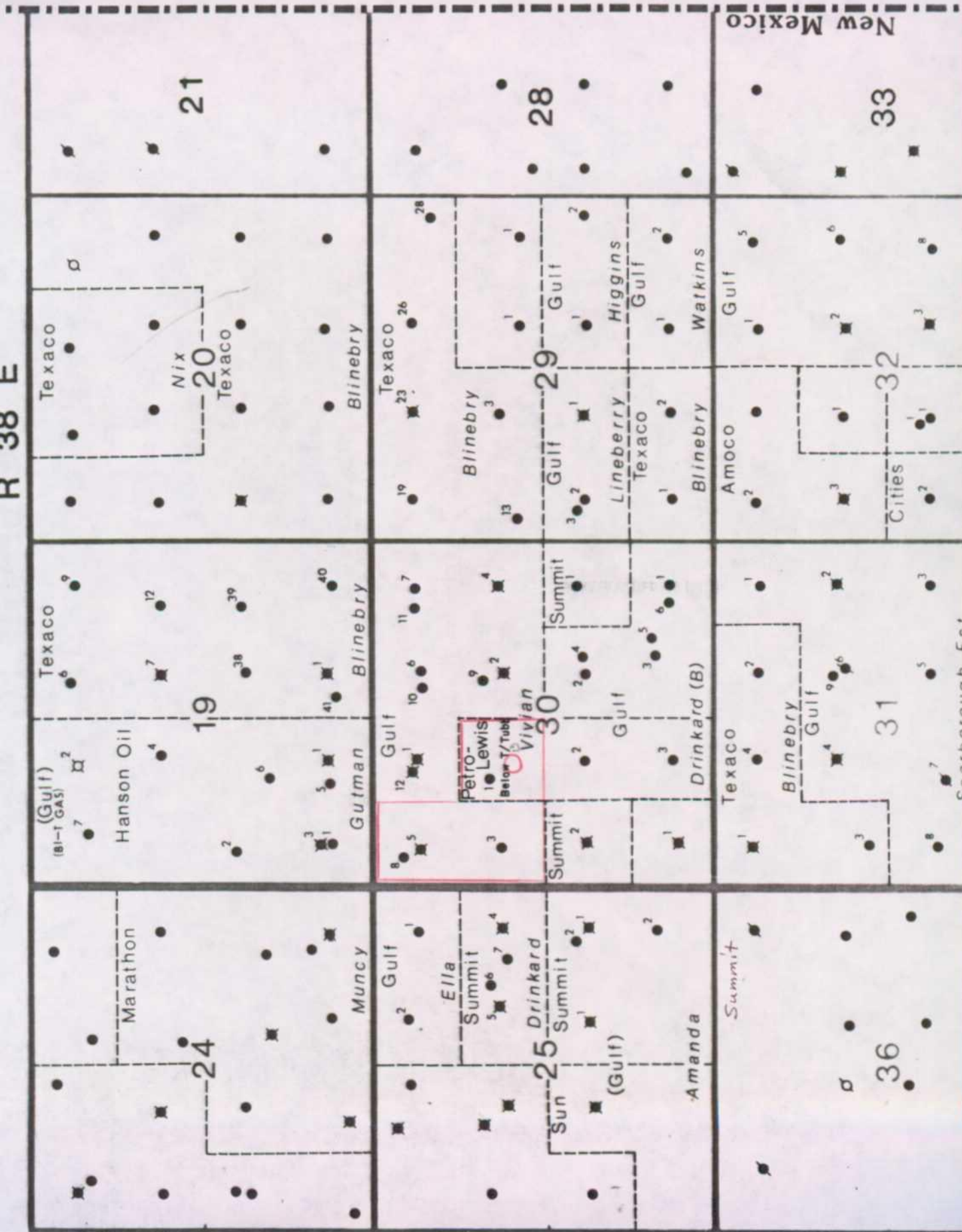
**RONALD J. EIDSON, 3239**

R 38 E

T 22 S

Texas

New Mexico





STATE OF NEW MEXICO  
**ENERGY AND MINERALS DEPARTMENT**  
OIL CONSERVATION DIVISION

May 22, 1984

TONEY ANAYA  
GOVERNOR

POST OFFICE BOX 2088  
STATE LAND OFFICE BUILDING  
SANTA FE, NEW MEXICO 87501  
(505) 827-5800

Gulf Oil Exploration and  
Production Company  
P. O. Box 670  
Hobbs, New Mexico 88240

Attention: R. C. Anderson

Re: Administrative Orders  
NSP-1421, 1422, and 1423

Gentlemen:

The attached administrative orders have been amended to clarify the record indicating wells referenced in the orders have been drilled at non-standard locations. Clarification is also reflected in the administrative order number designation, (i.e. NSP-1421 has been changed to NSP-1421-(L). Other than the clarification, no changes have been made.

Sincerely,

*Gilbert P. Quintana*

GILBERT P. QUINTANA  
Petroleum Engineer

GPQ/dr